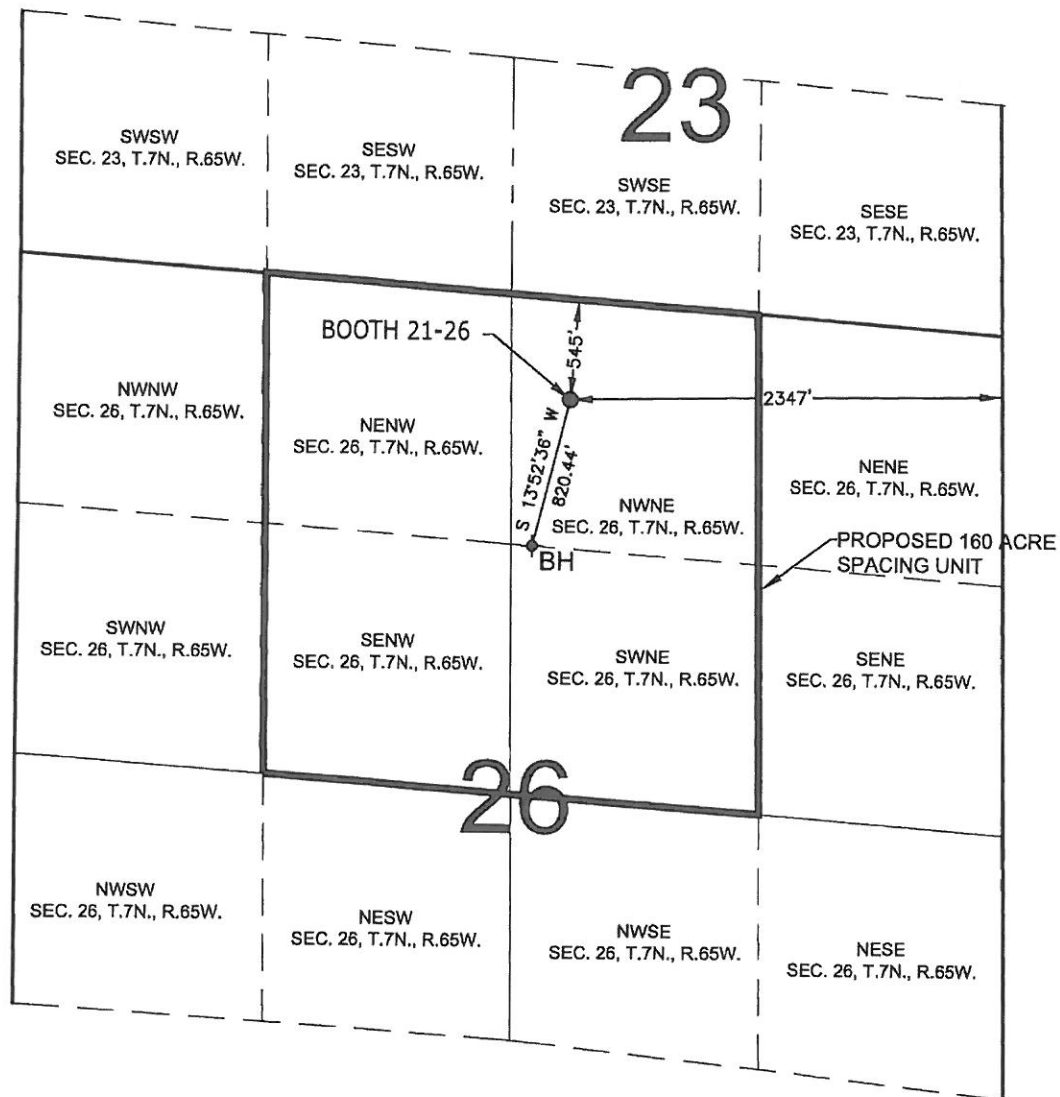


PROPOSED 318 Ae SPACING UNIT

SECTION 26, TOWNSHIP 7 NORTH, RANGE 65 WEST, 6TH P.M.



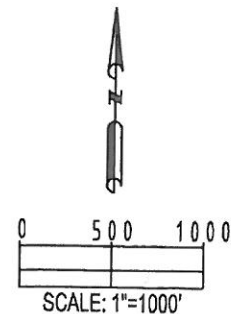
WELL BOOTH 21-26 TO BE LOCATED 545' FNL AND 2347' FEL, T7N, R65W, SEC. 26

SURFACE LOCATION
 LATITUDE= 40.551423°
 LONGITUDE= 104.629008°

BOTTOM HOLE LOCATION
 LATITUDE= 40.549242°
 LONGITUDE= 104.629745°

LEGEND

⊕ = EXISTING MONUMENT ♦ = BOTTOM HOLE BH = BOTTOM HOLE
 ● = PROPOSED WELL ◆ = EXISTING WELL



PREPARED BY PFS Petroleum Field Services, LLC 1601 W. 13th Ave. Denver, CO 80204	FIELD DATE: 03-20-12	SURFACE LOCATION: NW 1/4 NE 1/4, SEC. 26, T7N, R65W WELD COUNTY, COLORADO
	DRAWING DATE: 07-26-12	
BY: CLM	CHECKED: RDW	