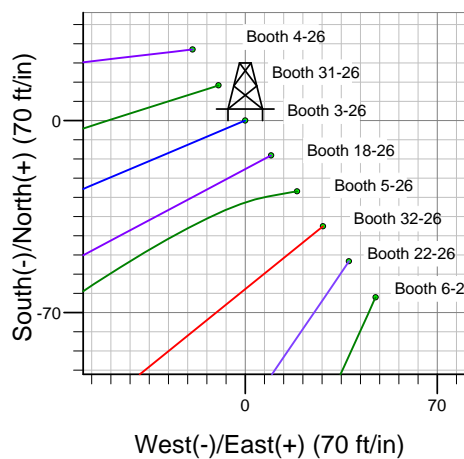
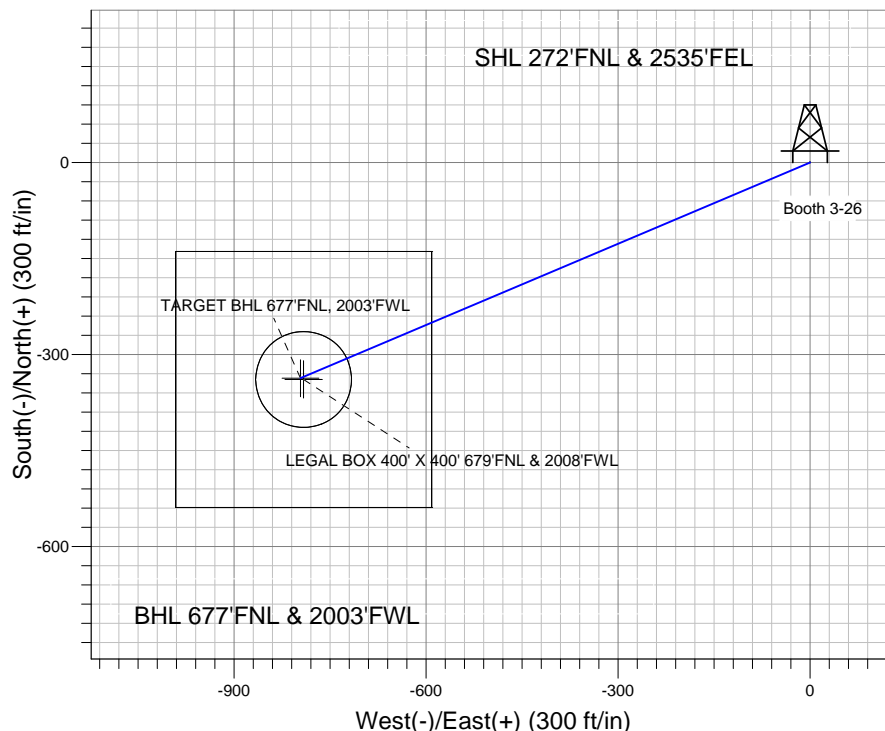
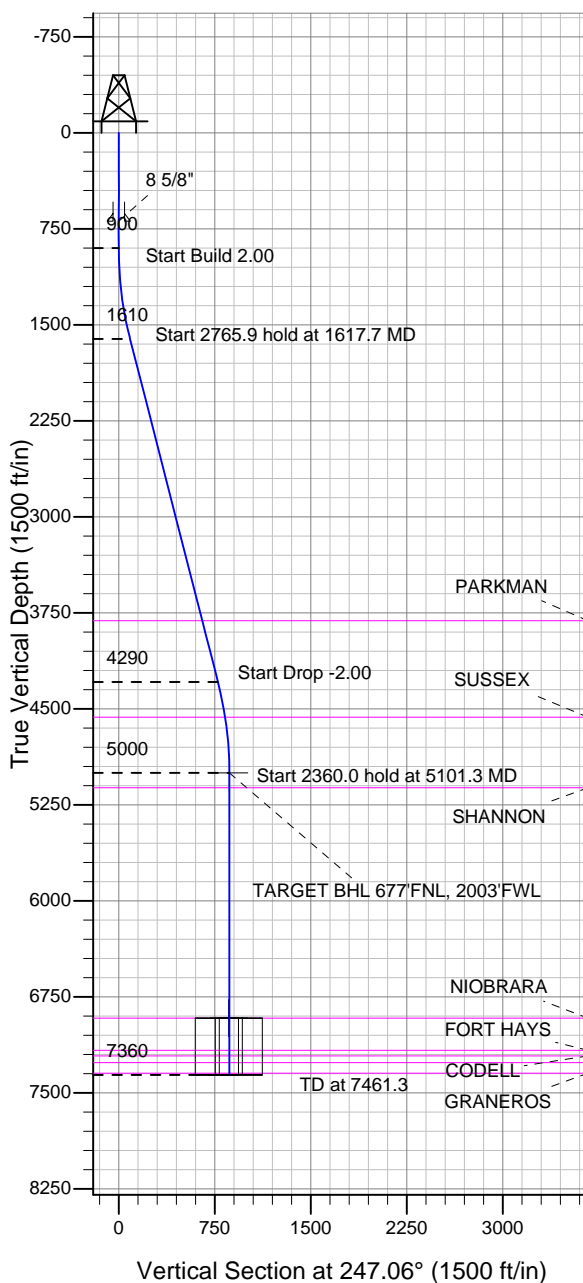


Well Name: Booth 3-26

Surface Location: Booth 8 Pad Sec.26-T7N-R65W
 North American Datum 1983 US State Plane 1983 Colorado Northern Zone
 Ground Elevation: 4893.0
 +N/-S +E/-W Northing Easting Latitude Longitude Slot
 0.0 0.0 1445201.81 3241841.92 40.552221 -104.629691
 Original Well Elev WELL @ 4909.0ft (Original Well Elev)

BAYSWATER EXPLORATION & PRODUCTION



Booth 8 Pad Sec.26-T7N-R65W
 Booth 3-26
 Plan #1 (5-22-12)
 8:46, May 25 2012



Azimuths to True North
 Magnetic North: 8.68°

Magnetic Field
 Strength: 53125.2snT
 Dip Angle: 67.16°
 Date: 5/25/2012
 Model: IGRF2010

WELLBORE TARGET DETAILS (LAT/LONG)

Name	TVD	+N/-S	+E/-W	Latitude	Longitude	Shape
TARGET BHL 677'FNL, 2003'FWL	5000.0	-337.0	-796.2	40.551296	-104.632556	Point
LEGAL BOX 400' X 400' 679'FNL & 2008'FWL	6916.0	-339.0	-791.2	40.551290	-104.632538	Rectangle (Sides: L400.0 W400.0)
TARGET CIRCLE 677'FNL & 2003'FWL	6916.0	-339.0	-791.2	40.551290	-104.632538	Circle (Radius: 75.0)

SECTION DETAILS

Sec	MD	Inc	Azi	TVD	+N/-S	+E/-W	DLeg	TFace	VSec	Target
1	0.0	0.00	0.00	0.0	0.0	0.0	0.00	0.00	0.0	
2	900.0	0.00	0.00	900.0	0.0	0.0	0.00	0.00	0.0	
3	1617.7	14.35	247.06	1610.2	-34.9	-82.4	2.00	247.06	89.4	
4	4383.6	14.35	247.06	4289.8	-302.1	-713.8	0.00	0.00	775.1	
5	5101.3	0.00	0.00	5000.0	-337.0	-796.2	2.00	180.00	864.6	TARGET BHL 677'FNL, 2003'FWL
6	7461.3	0.00	0.00	7360.0	-337.0	-796.2	0.00	0.00	864.6	



Directional

BAYSWATER EXPLORATION & PRODUCTION

SEC.26-T7N-R65W

Booth 8 Pad Sec.26-T7N-R65W

Booth 3-26

Wellbore #1

Plan: Plan #1 (5-22-12)

Standard Planning Report

25 May, 2012

Database:	Landmark	Local Co-ordinate Reference:	Well Booth 3-26
Company:	BAYSWATER EXPLORATION & PRODUCTION	TVD Reference:	WELL @ 4909.0ft (Original Well Elev)
Project:	SEC.26-T7N-R65W	MD Reference:	WELL @ 4909.0ft (Original Well Elev)
Site:	Booth 8 Pad Sec.26-T7N-R65W	North Reference:	True
Well:	Booth 3-26	Survey Calculation Method:	Minimum Curvature
Wellbore:	Wellbore #1		
Design:	Plan #1 (5-22-12)		

Project	SEC.26-T7N-R65W, Weld County, CO		
Map System:	US State Plane 1983	System Datum:	Mean Sea Level
Geo Datum:	North American Datum 1983		Using Well Reference Point
Map Zone:	Colorado Northern Zone		Using geodetic scale factor

Site	Booth 8 Pad Sec.26-T7N-R65W		
Site Position:		Northing:	1,445,227.50 ft
From:	Lat/Long	Easting:	3,241,822.49 ft
Position Uncertainty:	0.0 ft	Slot Radius:	"
		Latitude:	40.552292
		Longitude:	-104.629760
		Grid Convergence:	0.56 °

Well	Booth 3-26		
Well Position	+N/-S	-25.9 ft	Northing:
	+E/-W	19.2 ft	Easting:
Position Uncertainty		0.0 ft	Wellhead Elevation:
			Latitude:
			Longitude:
			Ground Level:

Wellbore	Wellbore #1				
Magnetics	Model Name	Sample Date	Declination (°)	Dip Angle (°)	Field Strength (nT)
	IGRF2010	5/22/2012	8.68	67.16	53,126

Design	Plan #1 (5-22-12)			
Audit Notes:				
Version:	Phase:	PROTOTYPE	Tie On Depth:	0.0
Vertical Section:	Depth From (TVD) (ft)	+N/-S (ft)	+E/-W (ft)	Direction (°)
	0.0	0.0	0.0	247.06

Plan Sections										
Measured Depth (ft)	Inclination (°)	Azimuth (°)	Vertical Depth (ft)	+N/-S (ft)	+E/-W (ft)	Dogleg Rate (°/100ft)	Build Rate (°/100ft)	Turn Rate (°/100ft)	TFO (°)	Target
0.0	0.00	0.00	0.0	0.0	0.0	0.00	0.00	0.00	0.00	
900.0	0.00	0.00	900.0	0.0	0.0	0.00	0.00	0.00	0.00	
1,617.7	14.35	247.06	1,610.2	-34.9	-82.4	2.00	2.00	0.00	247.06	
4,383.6	14.35	247.06	4,289.8	-302.1	-713.8	0.00	0.00	0.00	0.00	
5,101.3	0.00	0.00	5,000.0	-337.0	-796.2	2.00	-2.00	0.00	180.00	TARGET BHL 677'I
7,461.3	0.00	0.00	7,360.0	-337.0	-796.2	0.00	0.00	0.00	0.00	

Database:	Landmark	Local Co-ordinate Reference:	Well Booth 3-26
Company:	BAYSWATER EXPLORATION & PRODUCTION	TVD Reference:	WELL @ 4909.0ft (Original Well Elev)
Project:	SEC.26-T7N-R65W	MD Reference:	WELL @ 4909.0ft (Original Well Elev)
Site:	Booth 8 Pad Sec.26-T7N-R65W	North Reference:	True
Well:	Booth 3-26	Survey Calculation Method:	Minimum Curvature
Wellbore:	Wellbore #1		
Design:	Plan #1 (5-22-12)		

Planned Survey									
Measured Depth (ft)	Inclination (°)	Azimuth (°)	Vertical Depth (ft)	+N/-S (ft)	+E/-W (ft)	Vertical Section (ft)	Dogleg Rate (°/100ft)	Build Rate (°/100ft)	Turn Rate (°/100ft)
0.0	0.00	0.00	0.0	0.0	0.0	0.0	0.00	0.00	0.00
40.0	0.00	0.00	40.0	0.0	0.0	0.0	0.00	0.00	0.00
80.0	0.00	0.00	80.0	0.0	0.0	0.0	0.00	0.00	0.00
120.0	0.00	0.00	120.0	0.0	0.0	0.0	0.00	0.00	0.00
160.0	0.00	0.00	160.0	0.0	0.0	0.0	0.00	0.00	0.00
200.0	0.00	0.00	200.0	0.0	0.0	0.0	0.00	0.00	0.00
240.0	0.00	0.00	240.0	0.0	0.0	0.0	0.00	0.00	0.00
280.0	0.00	0.00	280.0	0.0	0.0	0.0	0.00	0.00	0.00
320.0	0.00	0.00	320.0	0.0	0.0	0.0	0.00	0.00	0.00
360.0	0.00	0.00	360.0	0.0	0.0	0.0	0.00	0.00	0.00
400.0	0.00	0.00	400.0	0.0	0.0	0.0	0.00	0.00	0.00
440.0	0.00	0.00	440.0	0.0	0.0	0.0	0.00	0.00	0.00
480.0	0.00	0.00	480.0	0.0	0.0	0.0	0.00	0.00	0.00
520.0	0.00	0.00	520.0	0.0	0.0	0.0	0.00	0.00	0.00
560.0	0.00	0.00	560.0	0.0	0.0	0.0	0.00	0.00	0.00
600.0	0.00	0.00	600.0	0.0	0.0	0.0	0.00	0.00	0.00
640.0	0.00	0.00	640.0	0.0	0.0	0.0	0.00	0.00	0.00
680.0	0.00	0.00	680.0	0.0	0.0	0.0	0.00	0.00	0.00
690.0	0.00	0.00	690.0	0.0	0.0	0.0	0.00	0.00	0.00
8 5/8"									
720.0	0.00	0.00	720.0	0.0	0.0	0.0	0.00	0.00	0.00
760.0	0.00	0.00	760.0	0.0	0.0	0.0	0.00	0.00	0.00
800.0	0.00	0.00	800.0	0.0	0.0	0.0	0.00	0.00	0.00
840.0	0.00	0.00	840.0	0.0	0.0	0.0	0.00	0.00	0.00
880.0	0.00	0.00	880.0	0.0	0.0	0.0	0.00	0.00	0.00
900.0	0.00	0.00	900.0	0.0	0.0	0.0	0.00	0.00	0.00
920.0	0.40	247.06	920.0	0.0	-0.1	0.1	2.00	2.00	0.00
960.0	1.20	247.06	960.0	-0.2	-0.6	0.6	2.00	2.00	0.00
1,000.0	2.00	247.06	1,000.0	-0.7	-1.6	1.7	2.00	2.00	0.00
1,040.0	2.80	247.06	1,039.9	-1.3	-3.1	3.4	2.00	2.00	0.00
1,080.0	3.60	247.06	1,079.9	-2.2	-5.2	5.7	2.00	2.00	0.00
1,120.0	4.40	247.06	1,119.8	-3.3	-7.8	8.4	2.00	2.00	0.00
1,160.0	5.20	247.06	1,159.6	-4.6	-10.9	11.8	2.00	2.00	0.00
1,200.0	6.00	247.06	1,199.5	-6.1	-14.5	15.7	2.00	2.00	0.00
1,240.0	6.80	247.06	1,239.2	-7.9	-18.6	20.2	2.00	2.00	0.00
1,280.0	7.60	247.06	1,278.9	-9.8	-23.2	25.2	2.00	2.00	0.00
1,320.0	8.40	247.06	1,318.5	-12.0	-28.3	30.7	2.00	2.00	0.00
1,360.0	9.20	247.06	1,358.0	-14.4	-33.9	36.9	2.00	2.00	0.00
1,400.0	10.00	247.06	1,397.5	-17.0	-40.1	43.5	2.00	2.00	0.00
1,440.0	10.80	247.06	1,436.8	-19.8	-46.7	50.7	2.00	2.00	0.00
1,480.0	11.60	247.06	1,476.0	-22.8	-53.9	58.5	2.00	2.00	0.00
1,520.0	12.40	247.06	1,515.2	-26.0	-61.5	66.8	2.00	2.00	0.00
1,560.0	13.20	247.06	1,554.2	-29.5	-69.7	75.7	2.00	2.00	0.00
1,600.0	14.00	247.06	1,593.1	-33.2	-78.4	85.1	2.00	2.00	0.00
1,617.7	14.35	247.06	1,610.2	-34.9	-82.4	89.4	2.00	2.00	0.00
1,640.0	14.35	247.06	1,631.8	-37.0	-87.4	95.0	0.00	0.00	0.00
1,680.0	14.35	247.06	1,670.6	-40.9	-96.6	104.9	0.00	0.00	0.00
1,720.0	14.35	247.06	1,709.3	-44.7	-105.7	114.8	0.00	0.00	0.00
1,760.0	14.35	247.06	1,748.1	-48.6	-114.8	124.7	0.00	0.00	0.00
1,800.0	14.35	247.06	1,786.8	-52.5	-124.0	134.6	0.00	0.00	0.00
1,840.0	14.35	247.06	1,825.6	-56.3	-133.1	144.5	0.00	0.00	0.00
1,880.0	14.35	247.06	1,864.3	-60.2	-142.2	154.5	0.00	0.00	0.00
1,920.0	14.35	247.06	1,903.1	-64.1	-151.4	164.4	0.00	0.00	0.00

Database:	Landmark	Local Co-ordinate Reference:	Well Booth 3-26
Company:	BAYSWATER EXPLORATION & PRODUCTION	TVD Reference:	WELL @ 4909.0ft (Original Well Elev)
Project:	SEC.26-T7N-R65W	MD Reference:	WELL @ 4909.0ft (Original Well Elev)
Site:	Booth 8 Pad Sec.26-T7N-R65W	North Reference:	True
Well:	Booth 3-26	Survey Calculation Method:	Minimum Curvature
Wellbore:	Wellbore #1		
Design:	Plan #1 (5-22-12)		

Planned Survey									
Measured Depth (ft)	Inclination (°)	Azimuth (°)	Vertical Depth (ft)	+N/-S (ft)	+E/-W (ft)	Vertical Section (ft)	Dogleg Rate (°/100ft)	Build Rate (°/100ft)	Turn Rate (°/100ft)
1,960.0	14.35	247.06	1,941.8	-67.9	-160.5	174.3	0.00	0.00	0.00
2,000.0	14.35	247.06	1,980.6	-71.8	-169.6	184.2	0.00	0.00	0.00
2,040.0	14.35	247.06	2,019.3	-75.7	-178.8	194.1	0.00	0.00	0.00
2,080.0	14.35	247.06	2,058.1	-79.5	-187.9	204.0	0.00	0.00	0.00
2,120.0	14.35	247.06	2,096.8	-83.4	-197.0	214.0	0.00	0.00	0.00
2,160.0	14.35	247.06	2,135.6	-87.3	-206.2	223.9	0.00	0.00	0.00
2,200.0	14.35	247.06	2,174.3	-91.1	-215.3	233.8	0.00	0.00	0.00
2,240.0	14.35	247.06	2,213.1	-95.0	-224.4	243.7	0.00	0.00	0.00
2,280.0	14.35	247.06	2,251.8	-98.9	-233.6	253.6	0.00	0.00	0.00
2,320.0	14.35	247.06	2,290.6	-102.7	-242.7	263.5	0.00	0.00	0.00
2,360.0	14.35	247.06	2,329.3	-106.6	-251.8	273.5	0.00	0.00	0.00
2,400.0	14.35	247.06	2,368.1	-110.4	-261.0	283.4	0.00	0.00	0.00
2,440.0	14.35	247.06	2,406.8	-114.3	-270.1	293.3	0.00	0.00	0.00
2,480.0	14.35	247.06	2,445.6	-118.2	-279.2	303.2	0.00	0.00	0.00
2,520.0	14.35	247.06	2,484.3	-122.0	-288.4	313.1	0.00	0.00	0.00
2,560.0	14.35	247.06	2,523.1	-125.9	-297.5	323.0	0.00	0.00	0.00
2,600.0	14.35	247.06	2,561.9	-129.8	-306.6	333.0	0.00	0.00	0.00
2,640.0	14.35	247.06	2,600.6	-133.6	-315.8	342.9	0.00	0.00	0.00
2,680.0	14.35	247.06	2,639.4	-137.5	-324.9	352.8	0.00	0.00	0.00
2,720.0	14.35	247.06	2,678.1	-141.4	-334.0	362.7	0.00	0.00	0.00
2,760.0	14.35	247.06	2,716.9	-145.2	-343.1	372.6	0.00	0.00	0.00
2,800.0	14.35	247.06	2,755.6	-149.1	-352.3	382.5	0.00	0.00	0.00
2,840.0	14.35	247.06	2,794.4	-153.0	-361.4	392.4	0.00	0.00	0.00
2,880.0	14.35	247.06	2,833.1	-156.8	-370.5	402.4	0.00	0.00	0.00
2,920.0	14.35	247.06	2,871.9	-160.7	-379.7	412.3	0.00	0.00	0.00
2,960.0	14.35	247.06	2,910.6	-164.6	-388.8	422.2	0.00	0.00	0.00
3,000.0	14.35	247.06	2,949.4	-168.4	-397.9	432.1	0.00	0.00	0.00
3,040.0	14.35	247.06	2,988.1	-172.3	-407.1	442.0	0.00	0.00	0.00
3,080.0	14.35	247.06	3,026.9	-176.2	-416.2	451.9	0.00	0.00	0.00
3,120.0	14.35	247.06	3,065.6	-180.0	-425.3	461.9	0.00	0.00	0.00
3,160.0	14.35	247.06	3,104.4	-183.9	-434.5	471.8	0.00	0.00	0.00
3,200.0	14.35	247.06	3,143.1	-187.8	-443.6	481.7	0.00	0.00	0.00
3,240.0	14.35	247.06	3,181.9	-191.6	-452.7	491.6	0.00	0.00	0.00
3,280.0	14.35	247.06	3,220.6	-195.5	-461.9	501.5	0.00	0.00	0.00
3,320.0	14.35	247.06	3,259.4	-199.3	-471.0	511.4	0.00	0.00	0.00
3,360.0	14.35	247.06	3,298.1	-203.2	-480.1	521.4	0.00	0.00	0.00
3,400.0	14.35	247.06	3,336.9	-207.1	-489.3	531.3	0.00	0.00	0.00
3,440.0	14.35	247.06	3,375.6	-210.9	-498.4	541.2	0.00	0.00	0.00
3,480.0	14.35	247.06	3,414.4	-214.8	-507.5	551.1	0.00	0.00	0.00
3,520.0	14.35	247.06	3,453.1	-218.7	-516.7	561.0	0.00	0.00	0.00
3,560.0	14.35	247.06	3,491.9	-222.5	-525.8	570.9	0.00	0.00	0.00
3,600.0	14.35	247.06	3,530.6	-226.4	-534.9	580.9	0.00	0.00	0.00
3,640.0	14.35	247.06	3,569.4	-230.3	-544.1	590.8	0.00	0.00	0.00
3,680.0	14.35	247.06	3,608.1	-234.1	-553.2	600.7	0.00	0.00	0.00
3,720.0	14.35	247.06	3,646.9	-238.0	-562.3	610.6	0.00	0.00	0.00
3,760.0	14.35	247.06	3,685.6	-241.9	-571.4	620.5	0.00	0.00	0.00
3,800.0	14.35	247.06	3,724.4	-245.7	-580.6	630.4	0.00	0.00	0.00
3,840.0	14.35	247.06	3,763.1	-249.6	-589.7	640.4	0.00	0.00	0.00
3,880.0	14.35	247.06	3,801.9	-253.5	-598.8	650.3	0.00	0.00	0.00
3,889.4	14.35	247.06	3,811.0	-254.4	-601.0	652.6	0.00	0.00	0.00
PARKMAN									
3,920.0	14.35	247.06	3,840.6	-257.3	-608.0	660.2	0.00	0.00	0.00
3,960.0	14.35	247.06	3,879.4	-261.2	-617.1	670.1	0.00	0.00	0.00

Database:	Landmark	Local Co-ordinate Reference:	Well Booth 3-26
Company:	BAYSWATER EXPLORATION & PRODUCTION	TVD Reference:	WELL @ 4909.0ft (Original Well Elev)
Project:	SEC.26-T7N-R65W	MD Reference:	WELL @ 4909.0ft (Original Well Elev)
Site:	Booth 8 Pad Sec.26-T7N-R65W	North Reference:	True
Well:	Booth 3-26	Survey Calculation Method:	Minimum Curvature
Wellbore:	Wellbore #1		
Design:	Plan #1 (5-22-12)		

Planned Survey									
Measured Depth (ft)	Inclination (°)	Azimuth (°)	Vertical Depth (ft)	+N/-S (ft)	+E/-W (ft)	Vertical Section (ft)	Dogleg Rate (°/100ft)	Build Rate (°/100ft)	Turn Rate (°/100ft)
4,000.0	14.35	247.06	3,918.1	-265.1	-626.2	680.0	0.00	0.00	0.00
4,040.0	14.35	247.06	3,956.9	-268.9	-635.4	689.9	0.00	0.00	0.00
4,080.0	14.35	247.06	3,995.7	-272.8	-644.5	699.9	0.00	0.00	0.00
4,120.0	14.35	247.06	4,034.4	-276.6	-653.6	709.8	0.00	0.00	0.00
4,160.0	14.35	247.06	4,073.2	-280.5	-662.8	719.7	0.00	0.00	0.00
4,200.0	14.35	247.06	4,111.9	-284.4	-671.9	729.6	0.00	0.00	0.00
4,240.0	14.35	247.06	4,150.7	-288.2	-681.0	739.5	0.00	0.00	0.00
4,280.0	14.35	247.06	4,189.4	-292.1	-690.2	749.4	0.00	0.00	0.00
4,320.0	14.35	247.06	4,228.2	-296.0	-699.3	759.4	0.00	0.00	0.00
4,360.0	14.35	247.06	4,266.9	-299.8	-708.4	769.3	0.00	0.00	0.00
4,383.6	14.35	247.06	4,289.8	-302.1	-713.8	775.1	0.00	0.00	0.00
4,400.0	14.03	247.06	4,305.7	-303.7	-717.5	779.1	2.00	-2.00	0.00
4,440.0	13.23	247.06	4,344.5	-307.4	-726.2	788.6	2.00	-2.00	0.00
4,480.0	12.43	247.06	4,383.6	-310.8	-734.4	797.4	2.00	-2.00	0.00
4,520.0	11.63	247.06	4,422.7	-314.1	-742.0	805.8	2.00	-2.00	0.00
4,560.0	10.83	247.06	4,461.9	-317.1	-749.2	813.6	2.00	-2.00	0.00
4,600.0	10.03	247.06	4,501.2	-319.9	-755.9	820.8	2.00	-2.00	0.00
4,640.0	9.23	247.06	4,540.7	-322.5	-762.0	827.5	2.00	-2.00	0.00
4,665.6	8.71	247.06	4,566.0	-324.1	-765.7	831.5	2.00	-2.00	0.00
SUSSEX									
4,680.0	8.43	247.06	4,580.2	-324.9	-767.7	833.6	2.00	-2.00	0.00
4,720.0	7.63	247.06	4,619.8	-327.1	-772.8	839.2	2.00	-2.00	0.00
4,760.0	6.83	247.06	4,659.5	-329.1	-777.5	844.2	2.00	-2.00	0.00
4,800.0	6.03	247.06	4,699.2	-330.8	-781.6	848.7	2.00	-2.00	0.00
4,840.0	5.23	247.06	4,739.1	-332.3	-785.2	852.6	2.00	-2.00	0.00
4,880.0	4.43	247.06	4,778.9	-333.6	-788.3	856.0	2.00	-2.00	0.00
4,920.0	3.63	247.06	4,818.8	-334.7	-790.9	858.8	2.00	-2.00	0.00
4,960.0	2.83	247.06	4,858.7	-335.6	-793.0	861.1	2.00	-2.00	0.00
5,000.0	2.03	247.06	4,898.7	-336.3	-794.5	862.8	2.00	-2.00	0.00
5,040.0	1.23	247.06	4,938.7	-336.7	-795.6	863.9	2.00	-2.00	0.00
5,080.0	0.43	247.06	4,978.7	-336.9	-796.1	864.5	2.00	-2.00	0.00
5,101.3	0.00	0.00	5,000.0	-337.0	-796.2	864.6	2.00	-2.00	530.01
TARGET BHL 677'FNL, 2003'FWL									
5,120.0	0.00	0.00	5,018.7	-337.0	-796.2	864.6	0.00	0.00	0.00
5,160.0	0.00	0.00	5,058.7	-337.0	-796.2	864.6	0.00	0.00	0.00
5,200.0	0.00	0.00	5,098.7	-337.0	-796.2	864.6	0.00	0.00	0.00
5,217.3	0.00	0.00	5,116.0	-337.0	-796.2	864.6	0.00	0.00	0.00
SHANNON									
5,240.0	0.00	0.00	5,138.7	-337.0	-796.2	864.6	0.00	0.00	0.00
5,280.0	0.00	0.00	5,178.7	-337.0	-796.2	864.6	0.00	0.00	0.00
5,320.0	0.00	0.00	5,218.7	-337.0	-796.2	864.6	0.00	0.00	0.00
5,360.0	0.00	0.00	5,258.7	-337.0	-796.2	864.6	0.00	0.00	0.00
5,400.0	0.00	0.00	5,298.7	-337.0	-796.2	864.6	0.00	0.00	0.00
5,440.0	0.00	0.00	5,338.7	-337.0	-796.2	864.6	0.00	0.00	0.00
5,480.0	0.00	0.00	5,378.7	-337.0	-796.2	864.6	0.00	0.00	0.00
5,520.0	0.00	0.00	5,418.7	-337.0	-796.2	864.6	0.00	0.00	0.00
5,560.0	0.00	0.00	5,458.7	-337.0	-796.2	864.6	0.00	0.00	0.00
5,600.0	0.00	0.00	5,498.7	-337.0	-796.2	864.6	0.00	0.00	0.00
5,640.0	0.00	0.00	5,538.7	-337.0	-796.2	864.6	0.00	0.00	0.00
5,680.0	0.00	0.00	5,578.7	-337.0	-796.2	864.6	0.00	0.00	0.00
5,720.0	0.00	0.00	5,618.7	-337.0	-796.2	864.6	0.00	0.00	0.00
5,760.0	0.00	0.00	5,658.7	-337.0	-796.2	864.6	0.00	0.00	0.00
5,800.0	0.00	0.00	5,698.7	-337.0	-796.2	864.6	0.00	0.00	0.00

Database:	Landmark	Local Co-ordinate Reference:	Well Booth 3-26
Company:	BAYSWATER EXPLORATION & PRODUCTION	TVD Reference:	WELL @ 4909.0ft (Original Well Elev)
Project:	SEC.26-T7N-R65W	MD Reference:	WELL @ 4909.0ft (Original Well Elev)
Site:	Booth 8 Pad Sec.26-T7N-R65W	North Reference:	True
Well:	Booth 3-26	Survey Calculation Method:	Minimum Curvature
Wellbore:	Wellbore #1		
Design:	Plan #1 (5-22-12)		

Planned Survey									
Measured Depth (ft)	Inclination (°)	Azimuth (°)	Vertical Depth (ft)	+N/-S (ft)	+E/-W (ft)	Vertical Section (ft)	Dogleg Rate (°/100ft)	Build Rate (°/100ft)	Turn Rate (°/100ft)
5,840.0	0.00	0.00	5,738.7	-337.0	-796.2	864.6	0.00	0.00	0.00
5,880.0	0.00	0.00	5,778.7	-337.0	-796.2	864.6	0.00	0.00	0.00
5,920.0	0.00	0.00	5,818.7	-337.0	-796.2	864.6	0.00	0.00	0.00
5,960.0	0.00	0.00	5,858.7	-337.0	-796.2	864.6	0.00	0.00	0.00
6,000.0	0.00	0.00	5,898.7	-337.0	-796.2	864.6	0.00	0.00	0.00
6,040.0	0.00	0.00	5,938.7	-337.0	-796.2	864.6	0.00	0.00	0.00
6,080.0	0.00	0.00	5,978.7	-337.0	-796.2	864.6	0.00	0.00	0.00
6,120.0	0.00	0.00	6,018.7	-337.0	-796.2	864.6	0.00	0.00	0.00
6,160.0	0.00	0.00	6,058.7	-337.0	-796.2	864.6	0.00	0.00	0.00
6,200.0	0.00	0.00	6,098.7	-337.0	-796.2	864.6	0.00	0.00	0.00
6,240.0	0.00	0.00	6,138.7	-337.0	-796.2	864.6	0.00	0.00	0.00
6,280.0	0.00	0.00	6,178.7	-337.0	-796.2	864.6	0.00	0.00	0.00
6,320.0	0.00	0.00	6,218.7	-337.0	-796.2	864.6	0.00	0.00	0.00
6,360.0	0.00	0.00	6,258.7	-337.0	-796.2	864.6	0.00	0.00	0.00
6,400.0	0.00	0.00	6,298.7	-337.0	-796.2	864.6	0.00	0.00	0.00
6,440.0	0.00	0.00	6,338.7	-337.0	-796.2	864.6	0.00	0.00	0.00
6,480.0	0.00	0.00	6,378.7	-337.0	-796.2	864.6	0.00	0.00	0.00
6,520.0	0.00	0.00	6,418.7	-337.0	-796.2	864.6	0.00	0.00	0.00
6,560.0	0.00	0.00	6,458.7	-337.0	-796.2	864.6	0.00	0.00	0.00
6,600.0	0.00	0.00	6,498.7	-337.0	-796.2	864.6	0.00	0.00	0.00
6,640.0	0.00	0.00	6,538.7	-337.0	-796.2	864.6	0.00	0.00	0.00
6,680.0	0.00	0.00	6,578.7	-337.0	-796.2	864.6	0.00	0.00	0.00
6,720.0	0.00	0.00	6,618.7	-337.0	-796.2	864.6	0.00	0.00	0.00
6,760.0	0.00	0.00	6,658.7	-337.0	-796.2	864.6	0.00	0.00	0.00
6,800.0	0.00	0.00	6,698.7	-337.0	-796.2	864.6	0.00	0.00	0.00
6,840.0	0.00	0.00	6,738.7	-337.0	-796.2	864.6	0.00	0.00	0.00
6,880.0	0.00	0.00	6,778.7	-337.0	-796.2	864.6	0.00	0.00	0.00
6,920.0	0.00	0.00	6,818.7	-337.0	-796.2	864.6	0.00	0.00	0.00
6,960.0	0.00	0.00	6,858.7	-337.0	-796.2	864.6	0.00	0.00	0.00
7,000.0	0.00	0.00	6,898.7	-337.0	-796.2	864.6	0.00	0.00	0.00
7,017.3	0.00	0.00	6,916.0	-337.0	-796.2	864.6	0.00	0.00	0.00
NIORARA - LEGAL BOX 400' X 400' 679'FNL & 2008'FWL - TARGET CIRCLE 677'FNL & 2003'FWL									
7,040.0	0.00	0.00	6,938.7	-337.0	-796.2	864.6	0.00	0.00	0.00
7,080.0	0.00	0.00	6,978.7	-337.0	-796.2	864.6	0.00	0.00	0.00
7,120.0	0.00	0.00	7,018.7	-337.0	-796.2	864.6	0.00	0.00	0.00
7,160.0	0.00	0.00	7,058.7	-337.0	-796.2	864.6	0.00	0.00	0.00
7,200.0	0.00	0.00	7,098.7	-337.0	-796.2	864.6	0.00	0.00	0.00
7,240.0	0.00	0.00	7,138.7	-337.0	-796.2	864.6	0.00	0.00	0.00
7,269.3	0.00	0.00	7,168.0	-337.0	-796.2	864.6	0.00	0.00	0.00
FORT HAYS									
7,280.0	0.00	0.00	7,178.7	-337.0	-796.2	864.6	0.00	0.00	0.00
7,313.3	0.00	0.00	7,212.0	-337.0	-796.2	864.6	0.00	0.00	0.00
CODELL									
7,320.0	0.00	0.00	7,218.7	-337.0	-796.2	864.6	0.00	0.00	0.00
7,360.0	0.00	0.00	7,258.7	-337.0	-796.2	864.6	0.00	0.00	0.00
7,365.3	0.00	0.00	7,264.0	-337.0	-796.2	864.6	0.00	0.00	0.00
GREENHORN									
7,400.0	0.00	0.00	7,298.7	-337.0	-796.2	864.6	0.00	0.00	0.00
7,440.0	0.00	0.00	7,338.7	-337.0	-796.2	864.6	0.00	0.00	0.00
7,447.3	0.00	0.00	7,346.0	-337.0	-796.2	864.6	0.00	0.00	0.00
GRANEROS									
7,461.3	0.00	0.00	7,360.0	-337.0	-796.2	864.6	0.00	0.00	0.00

Database:	Landmark	Local Co-ordinate Reference:	Well Booth 3-26
Company:	BAYSWATER EXPLORATION & PRODUCTION	TVD Reference:	WELL @ 4909.0ft (Original Well Elev)
Project:	SEC.26-T7N-R65W	MD Reference:	WELL @ 4909.0ft (Original Well Elev)
Site:	Booth 8 Pad Sec.26-T7N-R65W	North Reference:	True
Well:	Booth 3-26	Survey Calculation Method:	Minimum Curvature
Wellbore:	Wellbore #1		
Design:	Plan #1 (5-22-12)		

Casing Points					
Measured Depth (ft)	Vertical Depth (ft)	Name	Casing Diameter (")	Hole Diameter (")	
690.0	690.0	8 5/8"	8-5/8	12-1/4	

Formations						
Measured Depth (ft)	Vertical Depth (ft)	Name	Lithology	Dip (°)	Dip Direction (°)	
3,889.4	3,811.0	PARKMAN		0.00		
4,665.6	4,566.0	SUSSEX		0.00		
5,217.3	5,116.0	SHANNON		0.00		
7,017.3	6,916.0	NIOBRARA		0.00		
7,269.3	7,168.0	FORT HAYS		0.00		
7,313.3	7,212.0	CODELL		0.00		
7,365.3	7,264.0	GREENHORN		0.00		
7,447.3	7,346.0	GRANEROS		0.00		



Directional

BAYSWATER EXPLORATION & PRODUCTION

SEC.26-T7N-R65W

Booth 8 Pad Sec.26-T7N-R65W

Booth 3-26

Wellbore #1

Plan #1 (5-22-12)

Anticollision Report

25 May, 2012

Company:	BAYSWATER EXPLORATION & PRODUCTION	Local Co-ordinate Reference:	Well Booth 3-26
Project:	SEC.26-T7N-R65W	TVD Reference:	WELL @ 4909.0ft (Original Well Elev)
Reference Site:	Booth 8 Pad Sec.26-T7N-R65W	MD Reference:	WELL @ 4909.0ft (Original Well Elev)
Site Error:	0.0ft	North Reference:	True
Reference Well:	Booth 3-26	Survey Calculation Method:	Minimum Curvature
Well Error:	0.0ft	Output errors are at	2.00 sigma
Reference Wellbore	Wellbore #1	Database:	Landmark
Reference Design:	Plan #1 (5-22-12)	Offset TVD Reference:	Offset Datum

Reference	Plan #1 (5-22-12)		
Filter type:	NO GLOBAL FILTER: Using user defined selection & filtering criteria		
Interpolation Method:	Stations	Error Model:	ISCWSA
Depth Range:	Unlimited	Scan Method:	Closest Approach 3D
Results Limited by:	Maximum center-center distance of 10,000.0ft	Error Surface:	Elliptical Conic
Warning Levels Evaluated at:	2.00 Sigma		

Survey Tool Program	Date 5/25/2012			
From (ft)	To (ft)	Survey (Wellbore)	Tool Name	Description
0.0	7,461.3	Plan #1 (5-22-12) (Wellbore #1)	MWD	MWD - Standard

Summary						
Site Name	Reference Measured Depth (ft)	Offset Measured Depth (ft)	Distance Between Centres (ft)	Between Ellipses (ft)	Separation Factor	Warning
Offset Well - Wellbore - Design						
Booth 8 Pad Sec.26-T7N-R65W						
Booth 18-26 - Wellbore #1 - Plan #1 (5-22-12)	316.2	316.3	15.7	14.5	13.294	CC, ES
Booth 18-26 - Wellbore #1 - Plan #1 (5-22-12)	500.0	499.2	20.6	18.6	10.199	SF
Booth 31-26 - Wellbore #1 - Plan #1 (5-22-12)	200.0	200.0	16.0	15.4	23.784	CC, ES
Booth 31-26 - Wellbore #1 - Plan #1 (5-22-12)	400.0	399.3	19.5	18.0	12.562	SF

Offset Design Booth 8 Pad Sec.26-T7N-R65W - Booth 18-26 - Wellbore #1 - Plan #1 (5-22-12)												
Survey Program: 0-MWD												
Reference	Offset	Semi Major Axis			Distance							
Measured Depth (ft)	Vertical Depth (ft)	Measured Depth (ft)	Vertical Depth (ft)	Reference (ft)	Offset (ft)	Highside Toolface (°)	Offset Wellbore Centre +N/-S (ft)	+E/-W (ft)	Between Centres (ft)	Between Ellipses (ft)	Minimum Separation (ft)	Separation Factor
0.0	0.0	0.0	0.0	0.0	0.0	143.46	-12.8	9.4	15.9	15.9	0.00	N/A
100.0	100.0	100.0	100.0	0.1	0.1	143.46	-12.8	9.4	15.9	15.6	0.22	70.608
200.0	200.0	200.0	200.0	0.3	0.3	143.46	-12.8	9.4	15.9	15.2	0.67	23.536
300.0	300.0	300.0	300.0	0.6	0.5	149.78	-13.6	7.9	15.7	14.6	1.11	14.165
316.2	316.2	316.3	316.2	0.6	0.6	152.01	-13.9	7.4	15.7	14.5	1.18	13.294 CC, ES
400.0	400.0	399.8	399.7	0.8	0.8	168.37	-16.0	3.3	16.4	14.8	1.55	10.558
500.0	500.0	499.2	498.6	1.0	1.0	-167.82	-20.1	-4.3	20.6	18.6	2.02	10.199 SF
600.0	600.0	597.8	596.5	1.2	1.3	-149.89	-25.7	-14.9	29.9	27.4	2.53	11.813
700.0	700.0	695.4	692.9	1.5	1.6	-139.23	-32.8	-28.3	43.9	40.8	3.09	14.218
800.0	800.0	791.9	787.7	1.7	2.0	-132.99	-41.3	-44.4	61.9	58.2	3.68	16.803
900.0	900.0	887.1	880.5	1.9	2.4	-129.14	-51.2	-63.0	83.5	79.2	4.32	19.329
1,000.0	1,000.0	981.2	971.5	2.1	2.9	-13.78	-62.4	-84.0	106.8	102.5	4.33	24.646
1,100.0	1,099.8	1,074.6	1,061.0	2.3	3.4	-12.35	-74.9	-107.5	130.1	125.4	4.78	27.242
1,200.0	1,199.5	1,167.3	1,149.0	2.5	4.0	-11.47	-88.7	-133.4	153.3	148.1	5.24	29.282
1,300.0	1,298.7	1,259.8	1,235.8	2.8	4.7	-10.90	-103.7	-161.7	176.3	170.6	5.71	30.866
1,400.0	1,397.5	1,357.5	1,327.0	3.0	5.4	-10.59	-120.2	-192.7	197.2	191.0	6.20	31.796
1,500.0	1,495.6	1,456.0	1,418.9	3.4	6.1	-10.51	-136.7	-223.9	214.8	208.1	6.72	31.961
1,600.0	1,593.1	1,555.0	1,511.3	3.7	6.8	-10.60	-153.4	-255.2	229.0	221.7	7.25	31.575
1,617.7	1,610.2	1,572.5	1,527.7	3.8	7.0	-10.63	-156.4	-260.8	231.1	223.8	7.35	31.458
1,700.0	1,689.9	1,654.2	1,603.9	4.2	7.6	-10.83	-170.1	-286.7	240.9	233.1	7.82	30.805
1,800.0	1,786.8	1,753.5	1,696.6	4.6	8.3	-11.04	-186.9	-318.2	252.8	244.4	8.41	30.078
1,900.0	1,883.7	1,852.8	1,789.3	5.1	9.1	-11.23	-203.6	-349.7	264.7	255.7	9.00	29.417

CC - Min centre to center distance or convergent point, SF - min separation factor, ES - min ellipse separation

Company:	BAYSWATER EXPLORATION & PRODUCTION	Local Co-ordinate Reference:	Well Booth 3-26
Project:	SEC.26-T7N-R65W	TVD Reference:	WELL @ 4909.0ft (Original Well Elev)
Reference Site:	Booth 8 Pad Sec.26-T7N-R65W	MD Reference:	WELL @ 4909.0ft (Original Well Elev)
Site Error:	0.0ft	North Reference:	True
Reference Well:	Booth 3-26	Survey Calculation Method:	Minimum Curvature
Well Error:	0.0ft	Output errors are at	2.00 sigma
Reference Wellbore	Wellbore #1	Database:	Landmark
Reference Design:	Plan #1 (5-22-12)	Offset TVD Reference:	Offset Datum

Offset Design Booth 8 Pad Sec.26-T7N-R65W - Booth 18-26 - Wellbore #1 - Plan #1 (5-22-12)													Offset Site Error:	0.0 ft
Survey Program: 0-MWD													Offset Well Error:	0.0 ft
Measured Depth (ft)	Vertical Depth (ft)	Measured Depth (ft)	Vertical Depth (ft)	Reference	Offset	Highside Toolface (°)	Offset Wellbore Centre +N/-S (ft)	Offset Wellbore Centre +E/-W (ft)	Between Centres (ft)	Between Ellipses (ft)	Minimum Separation (ft)	Separation Factor	Warning	
2,000.0	1,980.6	1,952.1	1,881.9	5.5	9.8	-11.41	-220.3	-381.1	276.6	267.0	9.60	28.816		
2,100.0	2,077.5	2,051.4	1,974.6	6.0	10.6	-11.57	-237.0	-412.6	288.5	278.3	10.21	28.268		
2,200.0	2,174.3	2,150.7	2,067.3	6.5	11.3	-11.72	-253.8	-444.1	300.4	289.6	10.82	27.768		
2,300.0	2,271.2	2,249.9	2,159.9	7.0	12.1	-11.86	-270.5	-475.6	312.3	300.9	11.44	27.310		
2,400.0	2,368.1	2,349.2	2,252.6	7.6	12.8	-11.99	-287.2	-507.0	324.2	312.2	12.06	26.891		
2,500.0	2,465.0	2,448.5	2,345.3	8.1	13.6	-12.11	-303.9	-538.5	336.2	323.5	12.68	26.506		
2,600.0	2,561.9	2,547.8	2,438.0	8.6	14.3	-12.22	-320.7	-570.0	348.1	334.8	13.31	26.151		
2,700.0	2,658.7	2,647.1	2,530.6	9.1	15.1	-12.32	-337.4	-601.5	360.0	346.0	13.94	25.823		
2,800.0	2,755.6	2,746.4	2,623.3	9.6	15.8	-12.42	-354.1	-632.9	371.9	357.3	14.57	25.520		
2,900.0	2,852.5	2,845.7	2,716.0	10.1	16.6	-12.51	-370.9	-664.4	383.8	368.6	15.21	25.238		
3,000.0	2,949.4	2,944.9	2,808.6	10.7	17.4	-12.60	-387.6	-695.9	395.7	379.9	15.84	24.976		
3,100.0	3,046.2	3,044.2	2,901.3	11.2	18.1	-12.68	-404.3	-727.3	407.6	391.2	16.48	24.731		
3,200.0	3,143.1	3,143.5	2,994.0	11.7	18.9	-12.75	-421.0	-758.8	419.6	402.4	17.12	24.503		
3,300.0	3,240.0	3,242.8	3,086.6	12.3	19.6	-12.83	-437.8	-790.3	431.5	413.7	17.76	24.290		
3,400.0	3,336.9	3,342.1	3,179.3	12.8	20.4	-12.89	-454.5	-821.8	443.4	425.0	18.41	24.089		
3,500.0	3,433.8	3,441.4	3,272.0	13.3	21.1	-12.96	-471.2	-853.2	455.3	436.3	19.05	23.901		
3,600.0	3,530.6	3,540.7	3,364.6	13.9	21.9	-13.02	-487.9	-884.7	467.2	447.5	19.69	23.724		
3,700.0	3,627.5	3,640.0	3,457.3	14.4	22.7	-13.08	-504.7	-916.2	479.2	458.8	20.34	23.557		
3,800.0	3,724.4	3,739.2	3,550.0	14.9	23.4	-13.13	-521.4	-947.7	491.1	470.1	20.99	23.399		
3,900.0	3,821.3	3,838.5	3,642.6	15.5	24.2	-13.19	-538.1	-979.1	503.0	481.4	21.63	23.250		
4,000.0	3,918.1	3,937.8	3,735.3	16.0	24.9	-13.24	-554.8	-1,010.6	514.9	492.6	22.28	23.109		
4,100.0	4,015.0	4,037.1	3,828.0	16.5	25.7	-13.28	-571.6	-1,042.1	526.8	503.9	22.93	22.975		
4,200.0	4,111.9	4,136.4	3,920.6	17.1	26.4	-13.33	-588.3	-1,073.6	538.8	515.2	23.58	22.848		
4,300.0	4,208.8	4,235.7	4,013.3	17.6	27.2	-13.37	-605.0	-1,105.0	550.7	526.5	24.23	22.727		
4,383.6	4,289.8	4,318.7	4,090.8	18.0	27.8	-13.41	-619.0	-1,131.3	560.7	535.9	24.77	22.631		
4,400.0	4,305.7	4,334.9	4,106.0	18.1	28.0	-13.42	-621.7	-1,136.5	562.7	537.8	24.88	22.619		
4,500.0	4,403.1	4,433.9	4,198.4	18.5	28.7	-13.48	-638.4	-1,167.9	576.8	551.4	25.44	22.670		
4,600.0	4,501.2	4,532.4	4,290.2	18.8	29.5	-13.47	-655.0	-1,199.1	594.3	568.4	25.96	22.895		
4,700.0	4,600.0	4,630.2	4,381.5	19.1	30.2	-13.40	-671.5	-1,230.1	615.2	588.7	26.42	23.286		
4,800.0	4,699.2	4,727.2	4,472.0	19.3	31.0	-13.29	-687.8	-1,260.8	639.3	612.5	26.82	23.836		
4,900.0	4,798.9	4,823.3	4,561.7	19.6	31.7	-13.14	-704.0	-1,291.3	666.8	639.6	27.17	24.540		
5,000.0	4,898.7	4,918.4	4,650.5	19.7	32.4	-12.96	-720.0	-1,321.4	697.5	670.0	27.46	25.397		
5,101.3	5,000.0	5,013.5	4,739.3	19.8	33.1	-125.70	-736.1	-1,351.6	731.9	704.2	27.71	26.414		
5,200.0	5,098.7	5,105.6	4,825.3	19.9	33.8	-125.34	-751.6	-1,380.8	767.1	739.0	28.11	27.285		
5,300.0	5,198.7	5,215.8	4,928.4	20.1	34.6	-124.96	-769.9	-1,415.2	802.3	773.7	28.56	28.090		
5,400.0	5,298.7	5,348.3	5,053.9	20.2	35.3	-124.60	-789.6	-1,452.3	833.8	804.8	29.04	28.717		
5,500.0	5,398.7	5,484.6	5,185.1	20.3	35.9	-124.30	-807.0	-1,485.1	860.9	831.4	29.51	29.171		
5,600.0	5,498.7	5,624.3	5,321.2	20.4	36.4	-124.07	-821.8	-1,513.0	883.4	853.4	29.98	29.464		
5,700.0	5,598.7	5,766.9	5,461.5	20.5	36.8	-123.90	-833.7	-1,535.3	901.1	870.6	30.44	29.602		
5,800.0	5,698.7	5,911.7	5,605.1	20.7	37.2	-123.78	-842.4	-1,551.7	913.8	882.9	30.88	29.594		
5,900.0	5,798.7	6,058.1	5,751.0	20.8	37.4	-123.71	-847.7	-1,561.7	921.5	890.2	31.29	29.451		
6,000.0	5,898.7	6,205.2	5,898.1	20.9	37.6	-123.69	-849.5	-1,565.2	924.1	892.5	31.69	29.166		
6,100.0	5,998.7	6,305.8	5,998.7	21.0	37.6	-123.69	-849.5	-1,565.2	924.1	892.1	32.01	28.870		
6,200.0	6,098.7	6,405.8	6,098.7	21.2	37.7	-123.69	-849.5	-1,565.2	924.1	891.8	32.33	28.582		
6,300.0	6,198.7	6,505.8	6,198.7	21.3	37.8	-123.69	-849.5	-1,565.2	924.1	891.5	32.66	28.298		
6,400.0	6,298.7	6,605.8	6,298.7	21.4	37.8	-123.69	-849.5	-1,565.2	924.1	891.2	32.99	28.017		
6,500.0	6,398.7	6,705.8	6,398.7	21.6	37.9	-123.69	-849.5	-1,565.2	924.1	890.8	33.32	27.739		
6,600.0	6,498.7	6,805.8	6,498.7	21.7	38.0	-123.69	-849.5	-1,565.2	924.1	890.5	33.65	27.464		
6,700.0	6,598.7	6,905.8	6,598.7	21.8	38.1	-123.69	-849.5	-1,565.2	924.1	890.2	33.98	27.193		
6,800.0	6,698.7	7,005.8	6,698.7	22.0	38.1	-123.69	-849.5	-1,565.2	924.1	889.8	34.32	26.925		
6,900.0	6,798.7	7,105.8	6,798.7	22.1	38.2	-123.69	-849.5	-1,565.2	924.1	889.5	34.66	26.661		

CC - Min centre to center distance or convergent point, SF - min separation factor, ES - min ellipse separation

Company:	BAYSWATER EXPLORATION & PRODUCTION	Local Co-ordinate Reference:	Well Booth 3-26
Project:	SEC.26-T7N-R65W	TVD Reference:	WELL @ 4909.0ft (Original Well Elev)
Reference Site:	Booth 8 Pad Sec.26-T7N-R65W	MD Reference:	WELL @ 4909.0ft (Original Well Elev)
Site Error:	0.0ft	North Reference:	True
Reference Well:	Booth 3-26	Survey Calculation Method:	Minimum Curvature
Well Error:	0.0ft	Output errors are at	2.00 sigma
Reference Wellbore	Wellbore #1	Database:	Landmark
Reference Design:	Plan #1 (5-22-12)	Offset TVD Reference:	Offset Datum

Offset Design Booth 8 Pad Sec.26-T7N-R65W - Booth 18-26 - Wellbore #1 - Plan #1 (5-22-12)												Offset Site Error:	0.0 ft
Survey Program: 0-MWD												Offset Well Error:	0.0 ft
Reference		Offset		Semi Major Axis		Highside Toolface (°)	Offset Wellbore Centre		Distance		Minimum Separation (ft)	Separation Factor	Warning
Measured Depth (ft)	Vertical Depth (ft)	Measured Depth (ft)	Vertical Depth (ft)	Reference (ft)	Offset (ft)		+N/-S (ft)	+E/-W (ft)	Between Centres (ft)	Between Ellipses (ft)			
7,000.0	6,898.7	7,205.8	6,898.7	22.3	38.3	-123.69	-849.5	-1,565.2	924.1	889.1	35.01	26.400	
7,100.0	6,998.7	7,305.8	6,998.7	22.4	38.4	-123.69	-849.5	-1,565.2	924.1	888.8	35.35	26.142	
7,200.0	7,098.7	7,405.8	7,098.7	22.5	38.5	-123.69	-849.5	-1,565.2	924.1	888.4	35.70	25.887	
7,300.0	7,198.7	7,505.8	7,198.7	22.7	38.5	-123.69	-849.5	-1,565.2	924.1	888.1	36.05	25.636	
7,400.0	7,298.7	7,605.8	7,298.7	22.8	38.6	-123.69	-849.5	-1,565.2	924.1	887.7	36.40	25.389	
7,461.3	7,360.0	7,667.1	7,360.0	22.9	38.7	-123.69	-849.5	-1,565.2	924.1	887.5	36.62	25.239	

Company:	BAYSWATER EXPLORATION & PRODUCTION	Local Co-ordinate Reference:	Well Booth 3-26
Project:	SEC.26-T7N-R65W	TVD Reference:	WELL @ 4909.0ft (Original Well Elev)
Reference Site:	Booth 8 Pad Sec.26-T7N-R65W	MD Reference:	WELL @ 4909.0ft (Original Well Elev)
Site Error:	0.0ft	North Reference:	True
Reference Well:	Booth 3-26	Survey Calculation Method:	Minimum Curvature
Well Error:	0.0ft	Output errors are at	2.00 sigma
Reference Wellbore	Wellbore #1	Database:	Landmark
Reference Design:	Plan #1 (5-22-12)	Offset TVD Reference:	Offset Datum

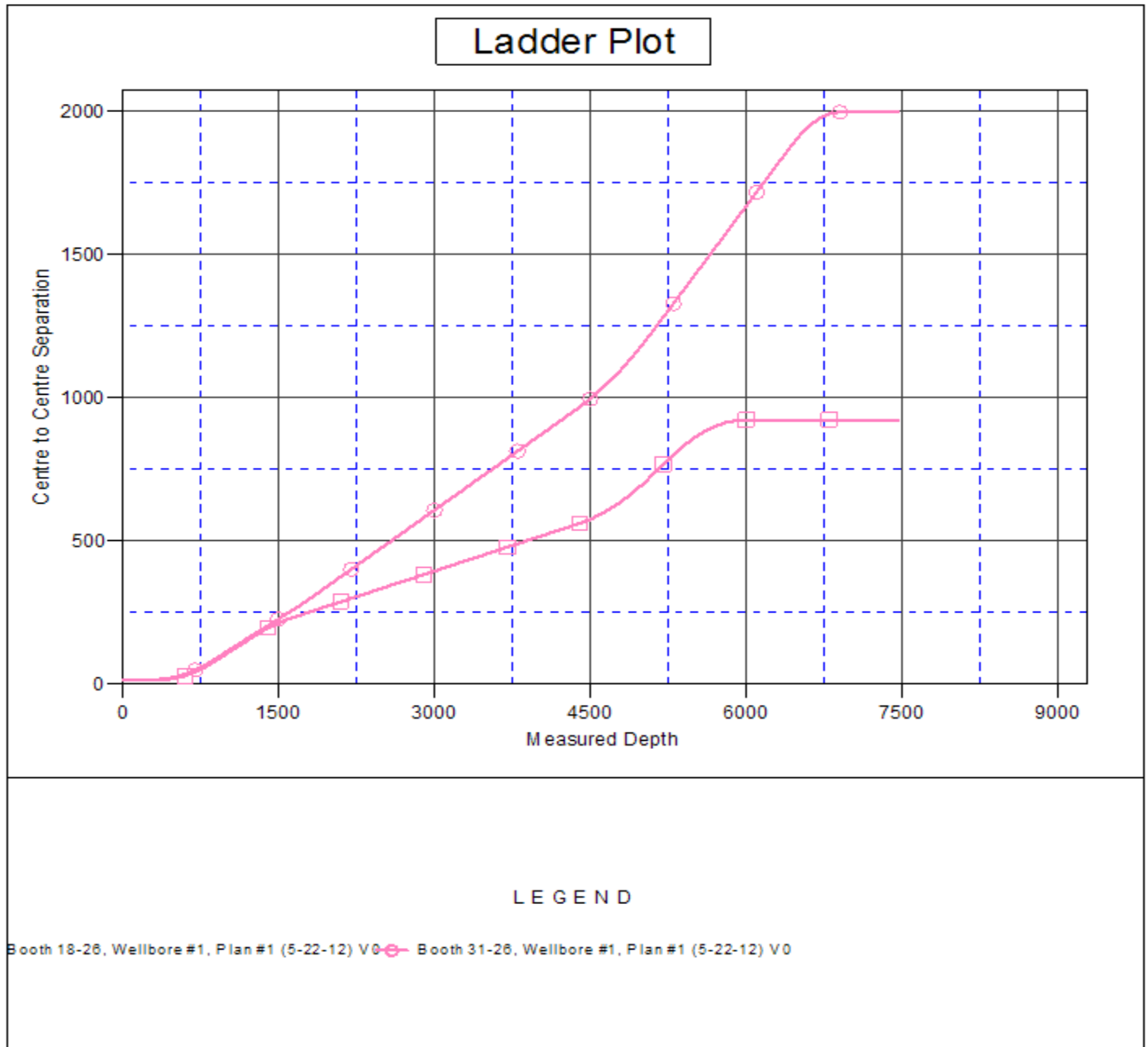
Offset Design Booth 8 Pad Sec.26-T7N-R65W - Booth 31-26 - Wellbore #1 - Plan #1 (5-22-12)													Offset Site Error:	0.0 ft
Survey Program: 0-MWD													Offset Well Error:	0.0 ft
Measured Depth (ft)	Vertical Depth (ft)	Measured Depth (ft)	Vertical Depth (ft)	Reference	Offset	Semi Major Axis	Highside Toolface (°)	Offset Wellbore Centre +N/-S (ft)	Offset Wellbore Centre +E/-W (ft)	Between Centres (ft)	Between Ellipses (ft)	Minimum Separation (ft)	Separation Factor	Warning
0.0	0.0	0.0	0.0	0.0	0.0	-37.34	-37.34	12.8	-9.7	16.0	16.0	0.00	N/A	
100.0	100.0	100.0	100.0	0.1	0.1	-37.34	-37.34	12.8	-9.7	16.0	15.8	0.22	71.351	
200.0	200.0	200.0	200.0	0.3	0.3	-37.34	-37.34	12.8	-9.7	16.0	15.4	0.67	23.784 CC, ES	
300.0	300.0	299.8	299.8	0.6	0.5	-42.95	-42.95	12.2	-11.4	16.7	15.6	1.11	15.041	
400.0	400.0	399.3	399.1	0.8	0.8	-56.88	-56.88	10.7	-16.3	19.5	18.0	1.55	12.562 SF	
500.0	500.0	498.4	497.8	1.0	1.0	-71.81	-71.81	8.1	-24.5	25.9	23.9	2.01	12.877	
600.0	600.0	596.7	595.4	1.2	1.3	-82.92	-82.92	4.5	-35.9	36.4	33.9	2.50	14.595	
700.0	700.0	694.1	691.7	1.5	1.6	-90.12	-90.12	-0.1	-50.2	50.9	47.9	3.02	16.870	
800.0	800.0	790.4	786.2	1.7	2.0	-94.73	-94.73	-5.6	-67.5	69.1	65.5	3.59	19.275	
900.0	900.0	885.3	878.8	1.9	2.4	-97.77	-97.77	-11.9	-87.5	90.8	86.6	4.20	21.621	
1,000.0	1,000.0	979.2	969.6	2.1	2.9	13.18	13.18	-19.1	-110.1	114.2	109.8	4.34	26.291	
1,100.0	1,099.8	1,072.3	1,058.9	2.3	3.4	11.99	11.99	-27.1	-135.3	137.4	132.7	4.79	28.721	
1,200.0	1,199.5	1,164.8	1,146.7	2.5	4.0	11.25	11.25	-35.9	-163.1	160.6	155.3	5.24	30.617	
1,300.0	1,298.7	1,256.7	1,232.9	2.8	4.7	10.79	10.79	-45.5	-193.4	183.5	177.7	5.72	32.073	
1,400.0	1,397.5	1,347.9	1,317.4	3.0	5.4	10.50	10.50	-55.9	-226.0	206.1	199.9	6.20	33.233	
1,500.0	1,495.6	1,438.5	1,400.3	3.4	6.1	10.35	10.35	-67.0	-260.9	228.5	221.8	6.72	34.025	
1,600.0	1,593.1	1,528.5	1,481.4	3.7	6.9	10.28	10.28	-78.8	-298.1	250.7	243.4	7.25	34.589	
1,617.7	1,610.2	1,544.4	1,495.6	3.8	7.1	10.27	10.27	-80.9	-304.9	254.5	247.2	7.34	34.665	
1,700.0	1,689.9	1,617.7	1,560.6	4.2	7.8	10.30	10.30	-91.2	-337.3	273.6	265.8	7.82	34.990	
1,800.0	1,786.8	1,710.5	1,641.7	4.6	8.7	10.29	10.29	-104.8	-380.2	299.1	290.6	8.43	35.488	
1,900.0	1,883.7	1,807.1	1,726.0	5.1	9.7	10.28	10.28	-119.1	-425.0	324.8	315.8	9.05	35.883	
2,000.0	1,980.6	1,903.7	1,810.4	5.5	10.8	10.27	10.27	-133.3	-469.9	350.6	340.9	9.69	36.192	
2,100.0	2,077.5	2,000.3	1,894.8	6.0	11.8	10.26	10.26	-147.6	-514.8	376.4	366.1	10.33	36.436	
2,200.0	2,174.3	2,096.9	1,979.1	6.5	12.8	10.25	10.25	-161.8	-559.7	402.2	391.2	10.98	36.629	
2,300.0	2,271.2	2,193.6	2,063.5	7.0	13.8	10.24	10.24	-176.1	-604.6	427.9	416.3	11.63	36.785	
2,400.0	2,368.1	2,290.2	2,147.9	7.6	14.8	10.23	10.23	-190.3	-649.5	453.7	441.4	12.29	36.910	
2,500.0	2,465.0	2,386.8	2,232.2	8.1	15.9	10.23	10.23	-204.6	-694.4	479.5	466.5	12.95	37.011	
2,600.0	2,561.9	2,483.4	2,316.6	8.6	16.9	10.22	10.22	-218.8	-739.3	505.2	491.6	13.62	37.094	
2,700.0	2,658.7	2,580.1	2,401.0	9.1	17.9	10.22	10.22	-233.1	-784.2	531.0	516.7	14.29	37.162	
2,800.0	2,755.6	2,676.7	2,485.3	9.6	19.0	10.21	10.21	-247.3	-829.1	556.8	541.8	14.96	37.218	
2,900.0	2,852.5	2,773.3	2,569.7	10.1	20.0	10.21	10.21	-261.6	-873.9	582.6	566.9	15.63	37.264	
3,000.0	2,949.4	2,869.9	2,654.1	10.7	21.0	10.20	10.20	-275.8	-918.8	608.3	592.0	16.31	37.302	
3,100.0	3,046.2	2,966.5	2,738.4	11.2	22.1	10.20	10.20	-290.1	-963.7	634.1	617.1	16.99	37.333	
3,200.0	3,143.1	3,063.2	2,822.8	11.7	23.1	10.20	10.20	-304.3	-1,008.6	659.9	642.2	17.66	37.358	
3,300.0	3,240.0	3,159.8	2,907.2	12.3	24.1	10.19	10.19	-318.6	-1,053.5	685.7	667.3	18.34	37.380	
3,400.0	3,336.9	3,256.4	2,991.5	12.8	25.2	10.19	10.19	-332.8	-1,098.4	711.4	692.4	19.02	37.397	
3,500.0	3,433.8	3,353.0	3,075.9	13.3	26.2	10.19	10.19	-347.1	-1,143.3	737.2	717.5	19.71	37.411	
3,600.0	3,530.6	3,449.6	3,160.3	13.9	27.2	10.19	10.19	-361.3	-1,188.2	763.0	742.6	20.39	37.423	
3,700.0	3,627.5	3,546.3	3,244.6	14.4	28.3	10.18	10.18	-375.6	-1,233.1	788.7	767.7	21.07	37.432	
3,800.0	3,724.4	3,642.9	3,329.0	14.9	29.3	10.18	10.18	-389.8	-1,278.0	814.5	792.8	21.76	37.439	
3,900.0	3,821.3	3,739.5	3,413.4	15.5	30.3	10.18	10.18	-404.1	-1,322.8	840.3	817.9	22.44	37.445	
4,000.0	3,918.1	3,836.1	3,497.7	16.0	31.4	10.18	10.18	-418.3	-1,367.7	866.1	842.9	23.13	37.449	
4,100.0	4,015.0	3,932.8	3,582.1	16.5	32.4	10.18	10.18	-432.6	-1,412.6	891.8	868.0	23.81	37.452	
4,200.0	4,111.9	4,029.4	3,666.5	17.1	33.5	10.17	10.17	-446.8	-1,457.5	917.6	893.1	24.50	37.454	
4,300.0	4,208.8	4,126.0	3,750.8	17.6	34.5	10.17	10.17	-461.1	-1,502.4	943.4	918.2	25.19	37.455	
4,383.6	4,289.8	4,206.8	3,821.4	18.0	35.4	10.17	10.17	-473.0	-1,539.9	964.9	939.2	25.76	37.455	
4,400.0	4,305.7	4,222.6	3,835.2	18.1	35.5	10.19	10.19	-475.3	-1,547.3	969.2	943.3	25.86	37.478	
4,500.0	4,403.1	4,318.6	3,919.0	18.5	36.6	10.26	10.26	-489.5	-1,591.9	997.2	970.8	26.41	37.762	
4,600.0	4,501.2	4,413.6	4,001.9	18.8	37.6	10.32	10.32	-503.5	-1,636.0	1,028.4	1,001.5	26.90	38.231	
4,700.0	4,600.0	4,507.4	4,083.9	19.1	38.6	10.36	10.36	-517.3	-1,679.6	1,062.9	1,035.6	27.34	38.880	
4,800.0	4,699.2	4,600.0	4,164.7	19.3	39.6	10.39	10.39	-531.0	-1,722.6	1,100.6	1,072.9	27.72	39.704	

CC - Min centre to center distance or convergent point, SF - min separation factor, ES - min ellipse separation

Booth 8 Pad Sec.26-T7N-R65W - Booth 31-26 - Wellbore #1 - Plan #1 (5-22-12)													Offset Site Error: 0.0 ft	
Survey Program: 0-MWD													Offset Well Error: 0.0 ft	
Reference		Offset		Semi Major Axis			Distance							
Measured Depth	Vertical Depth	Measured Depth	Vertical Depth	Reference	Offset	Highside Toolface	Offset Wellbore Centre		Between Centres	Between Ellipses	Minimum Separation	Separation Factor	Warning	
(ft)	(ft)	(ft)	(ft)	(ft)	(ft)	(°)	+N/-S (ft)	+E/-W (ft)	(ft)	(ft)	(ft)			
4,900.0	4,798.9	4,691.3	4,244.4	19.6	40.6	10.40	-544.4	-1,765.0	1,141.5	1,113.4	28.05	40.701		
5,000.0	4,898.7	4,781.0	4,322.7	19.7	41.5	10.41	-557.7	-1,806.7	1,185.5	1,157.1	28.31	41.869		
5,101.3	5,000.0	4,870.3	4,400.7	19.8	42.5	-102.53	-570.8	-1,848.2	1,233.1	1,204.6	28.53	43.216		
5,200.0	5,098.7	4,956.5	4,476.0	19.9	43.4	-102.72	-583.6	-1,888.3	1,281.1	1,252.1	28.98	44.204		
5,300.0	5,198.7	5,043.8	4,552.2	20.1	44.4	-102.90	-596.4	-1,928.8	1,329.7	1,300.3	29.44	45.170		
5,400.0	5,298.7	5,131.1	4,628.4	20.2	45.3	-103.07	-609.3	-1,969.4	1,378.3	1,348.4	29.90	46.100		
5,500.0	5,398.7	5,218.4	4,704.7	20.3	46.2	-103.22	-622.2	-2,009.9	1,427.0	1,396.6	30.36	46.996		
5,600.0	5,498.7	5,305.8	4,780.9	20.4	47.2	-103.37	-635.1	-2,050.5	1,475.6	1,444.8	30.83	47.859		
5,700.0	5,598.7	5,393.1	4,857.2	20.5	48.1	-103.50	-647.9	-2,091.1	1,524.3	1,492.9	31.31	48.690		
5,800.0	5,698.7	5,480.4	4,933.4	20.7	49.1	-103.63	-660.8	-2,131.6	1,572.9	1,541.1	31.78	49.491		
5,900.0	5,798.7	5,567.7	5,009.6	20.8	50.0	-103.75	-673.7	-2,172.2	1,621.6	1,589.3	32.26	50.265		
6,000.0	5,898.7	5,655.0	5,085.9	20.9	50.9	-103.86	-686.6	-2,212.8	1,670.2	1,637.5	32.74	51.011		
6,100.0	5,998.7	5,742.3	5,162.1	21.0	51.9	-103.97	-699.4	-2,253.3	1,718.9	1,685.7	33.23	51.731		
6,200.0	6,098.7	5,829.6	5,238.4	21.2	52.8	-104.07	-712.3	-2,293.9	1,767.6	1,733.8	33.71	52.427		
6,300.0	6,198.7	5,917.0	5,314.6	21.3	53.7	-104.16	-725.2	-2,334.5	1,816.2	1,782.0	34.20	53.100		
6,400.0	6,298.7	6,004.3	5,390.8	21.4	54.7	-104.25	-738.1	-2,375.0	1,864.9	1,830.2	34.70	53.750		
6,500.0	6,398.7	6,236.9	5,597.9	21.6	56.7	-104.46	-770.2	-2,476.1	1,910.8	1,875.2	35.62	53.638		
6,600.0	6,498.7	6,520.4	5,860.6	21.7	58.5	-104.64	-802.2	-2,577.2	1,948.3	1,911.6	36.63	53.190		
6,700.0	6,598.7	6,824.7	6,152.8	21.8	59.9	-104.77	-827.8	-2,657.6	1,976.0	1,938.4	37.57	52.589		
6,800.0	6,698.7	7,144.7	6,467.9	22.0	60.9	-104.85	-844.3	-2,709.8	1,993.1	1,954.7	38.40	51.908		
6,900.0	6,798.7	7,473.2	6,795.7	22.1	61.3	-104.88	-850.2	-2,728.2	1,999.0	1,959.9	39.05	51.193		
7,000.0	6,898.7	7,576.2	6,898.7	22.3	61.3	-104.88	-850.2	-2,728.2	1,999.0	1,959.6	39.36	50.790		
7,100.0	6,998.7	7,676.2	6,998.7	22.4	61.4	-104.88	-850.2	-2,728.2	1,999.0	1,959.3	39.67	50.395		
7,200.0	7,098.7	7,776.2	7,098.7	22.5	61.4	-104.88	-850.2	-2,728.2	1,999.0	1,959.0	39.98	50.003		
7,300.0	7,198.7	7,876.2	7,198.7	22.7	61.5	-104.88	-850.2	-2,728.2	1,999.0	1,958.7	40.29	49.615		
7,400.0	7,298.7	7,976.2	7,298.7	22.8	61.6	-104.88	-850.2	-2,728.2	1,999.0	1,958.4	40.61	49.230		
7,461.3	7,360.0	8,037.5	7,360.0	22.9	61.6	-104.88	-850.2	-2,728.2	1,999.0	1,958.2	40.80	48.995		

Company:	BAYSWATER EXPLORATION & PRODUCTION	Local Co-ordinate Reference:	Well Booth 3-26
Project:	SEC.26-T7N-R65W	TVD Reference:	WELL @ 4909.0ft (Original Well Elev)
Reference Site:	Booth 8 Pad Sec.26-T7N-R65W	MD Reference:	WELL @ 4909.0ft (Original Well Elev)
Site Error:	0.0ft	North Reference:	True
Reference Well:	Booth 3-26	Survey Calculation Method:	Minimum Curvature
Well Error:	0.0ft	Output errors are at	2.00 sigma
Reference Wellbore	Wellbore #1	Database:	Landmark
Reference Design:	Plan #1 (5-22-12)	Offset TVD Reference:	Offset Datum

Reference Depths are relative to WELL @ 4909.0ft (Original Well Elev) Coordinates are relative to: Booth 3-26
Offset Depths are relative to Offset Datum Coordinate System is US State Plane 1983, Colorado Northern Zone
Central Meridian is -105.500000 ° Grid Convergence at Surface is: 0.56°



Company:	BAYSWATER EXPLORATION & PRODUCTION	Local Co-ordinate Reference:	Well Booth 3-26
Project:	SEC.26-T7N-R65W	TVD Reference:	WELL @ 4909.0ft (Original Well Elev)
Reference Site:	Booth 8 Pad Sec.26-T7N-R65W	MD Reference:	WELL @ 4909.0ft (Original Well Elev)
Site Error:	0.0ft	North Reference:	True
Reference Well:	Booth 3-26	Survey Calculation Method:	Minimum Curvature
Well Error:	0.0ft	Output errors are at	2.00 sigma
Reference Wellbore	Wellbore #1	Database:	Landmark
Reference Design:	Plan #1 (5-22-12)	Offset TVD Reference:	Offset Datum

Reference Depths are relative to WELL @ 4909.0ft (Original Well Elev) Coordinates are relative to: Booth 3-26
Offset Depths are relative to Offset Datum Coordinate System is US State Plane 1983, Colorado Northern Zone
Central Meridian is -105.500000 ° Grid Convergence at Surface is: 0.56°

