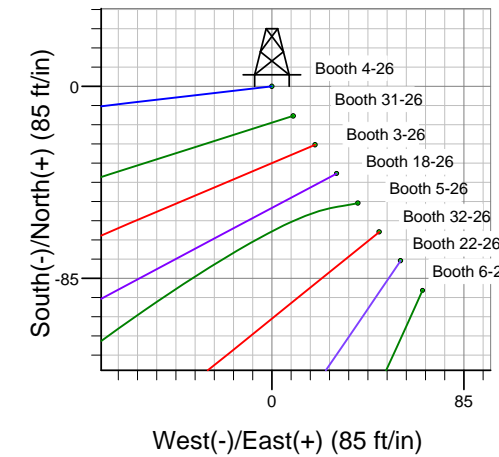
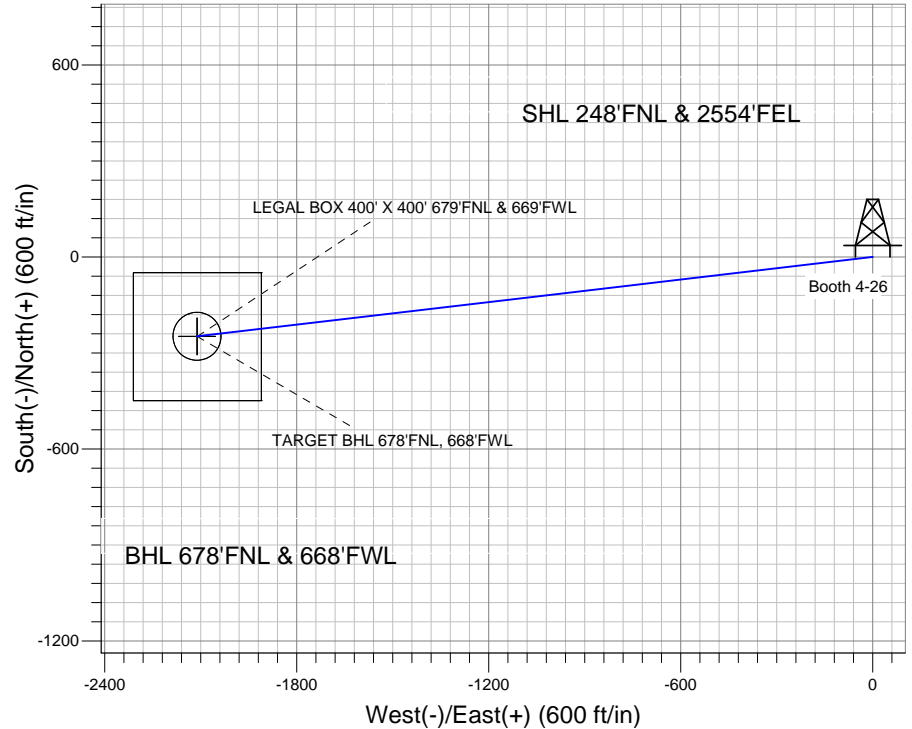
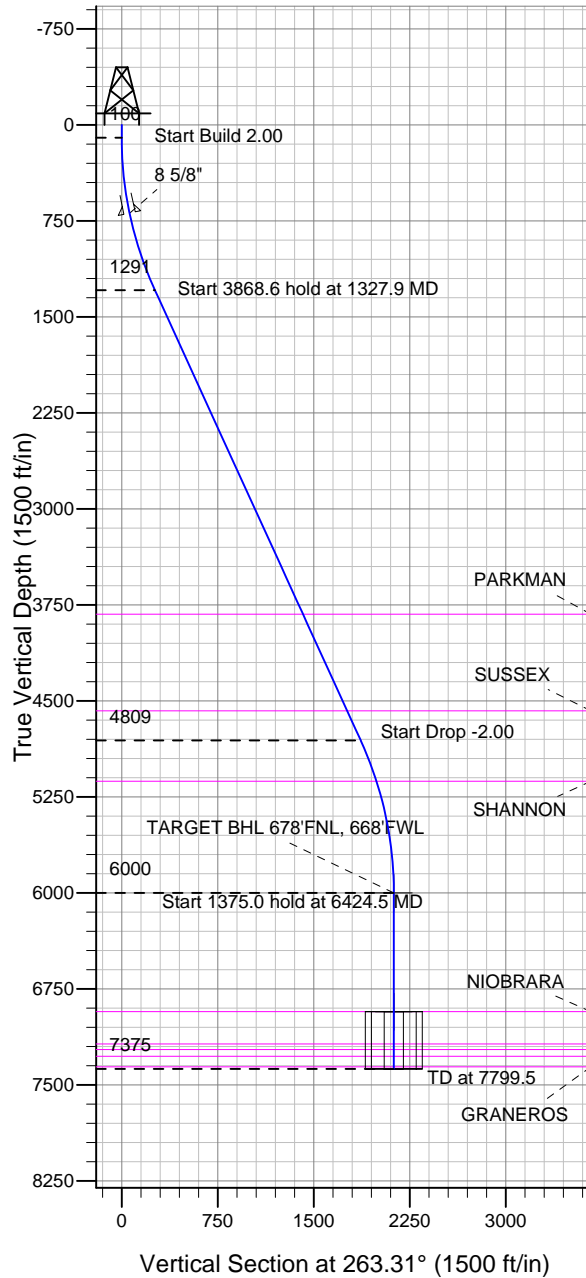


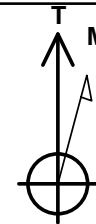
Well Name: Booth 4-26

Surface Location: Booth 8 Pad Sec.26-T7N-R65W
 North American Datum 1983 US State Plane 1983 Colorado Northern Zone
 Ground Elevation: 4893.0
 +N/-S +E/-W Northing Easting Latitude Longitude Slot
 0.0 0.0 1445227.49 3241822.49 40.552292 -104.629760
 Original Well Elev WELL @ 4909.0ft (Original Well Elev)

BAYSWATER EXPLORATION & PRODUCTION



Booth 8 Pad Sec.26-T7N-R65W
 Booth 4-26
 Plan #1 (5-22-12)
 15:21, May 24 2012



Azimuths to True North
 Magnetic North: 8.68°

Magnetic Field
 Strength: 53125.6snT
 Dip Angle: 67.16°
 Date: 5/24/2012
 Model: IGRF2010

WELLBORE TARGET DETAILS (LAT/LONG)

Name	TVD	+N/-S	+E/-W	Latitude	Longitude	Shape
TARGET BHL 678'FNL, 668'FWL	6000.0	-247.6	-2111.7	40.551612	-104.637359	Point
LEGAL BOX 400' X 400' 679'FNL & 669'FWL	6928.0	-248.6	-2110.7	40.551609	-104.637355	Rectangle (Sides: L400.0 W400.0)
TARGET CIRCLE 678'FNL & 668'FWL	6928.0	-247.6	-2111.7	40.551612	-104.637359	Circle (Radius: 75.0)

SECTION DETAILS

Sec	MD	Inc	Azi	TVD	+N/-S	+E/-W	DLeg	TFace	VSec	Target
1	0.0	0.00	0.00	0.0	0.0	0.0	0.00	0.00	0.0	
2	100.0	0.00	0.00	100.0	0.0	0.0	0.00	0.00	0.0	
3	1327.9	24.56	263.31	1290.7	-30.2	-257.4	2.00	263.31	259.2	
4	5196.5	24.56	263.31	4809.3	-217.5	-1854.3	0.00	0.00	1867.0	
5	6424.5	0.00	0.00	6000.0	-247.6	-2111.7	2.00	180.00	2126.2	TARGET BHL 678'FNL, 668'FWL
6	7799.5	0.00	0.00	7375.0	-247.6	-2111.7	0.00	0.00	2126.2	



Directional

BAYSWATER EXPLORATION & PRODUCTION

SEC.26-T7N-R65W

Booth 8 Pad Sec.26-T7N-R65W

Booth 4-26

Wellbore #1

Plan: Plan #1 (5-22-12)

Standard Planning Report

24 May, 2012

Database:	Landmark	Local Co-ordinate Reference:	Well Booth 4-26
Company:	BAYSWATER EXPLORATION & PRODUCTION	TVD Reference:	WELL @ 4909.0ft (Original Well Elev)
Project:	SEC.26-T7N-R65W	MD Reference:	WELL @ 4909.0ft (Original Well Elev)
Site:	Booth 8 Pad Sec.26-T7N-R65W	North Reference:	True
Well:	Booth 4-26	Survey Calculation Method:	Minimum Curvature
Wellbore:	Wellbore #1		
Design:	Plan #1 (5-22-12)		

Project	SEC.26-T7N-R65W, Weld County, CO		
Map System:	US State Plane 1983	System Datum:	Mean Sea Level
Geo Datum:	North American Datum 1983		Using Well Reference Point
Map Zone:	Colorado Northern Zone		Using geodetic scale factor

Site	Booth 8 Pad Sec.26-T7N-R65W		
Site Position:		Northing:	1,445,227.50 ft
From:	Lat/Long	Easting:	3,241,822.49 ft
Position Uncertainty:	0.0 ft	Slot Radius:	"
		Latitude:	40.552292
		Longitude:	-104.629760
		Grid Convergence:	0.56 °

Well	Booth 4-26		
Well Position	+N/-S	0.0 ft	Northing: 1,445,227.49 ft
	+E/-W	0.0 ft	Easting: 3,241,822.49 ft
Position Uncertainty		0.0 ft	Wellhead Elevation: ft
			Latitude: 40.552292
			Longitude: -104.629760
			Ground Level: 4,893.0 ft

Wellbore	Wellbore #1				
Magnetics	Model Name	Sample Date	Declination (°)	Dip Angle (°)	Field Strength (nT)
	IGRF2010	5/22/2012	8.68	67.16	53,126

Design	Plan #1 (5-22-12)			
Audit Notes:				
Version:	Phase:	PROTOTYPE	Tie On Depth:	0.0
Vertical Section:	Depth From (TVD) (ft)	+N/-S (ft)	+E/-W (ft)	Direction (°)
	0.0	0.0	0.0	263.31

Plan Sections										
Measured Depth (ft)	Inclination (°)	Azimuth (°)	Vertical Depth (ft)	+N/-S (ft)	+E/-W (ft)	Dogleg Rate (°/100ft)	Build Rate (°/100ft)	Turn Rate (°/100ft)	TFO (°)	Target
0.0	0.00	0.00	0.0	0.0	0.0	0.00	0.00	0.00	0.00	
100.0	0.00	0.00	100.0	0.0	0.0	0.00	0.00	0.00	0.00	
1,327.9	24.56	263.31	1,290.7	-30.2	-257.4	2.00	2.00	0.00	263.31	
5,196.5	24.56	263.31	4,809.3	-217.5	-1,854.3	0.00	0.00	0.00	0.00	
6,424.5	0.00	0.00	6,000.0	-247.6	-2,111.7	2.00	-2.00	0.00	180.00	TARGET BHL 678'I
7,799.5	0.00	0.00	7,375.0	-247.6	-2,111.7	0.00	0.00	0.00	0.00	

Database:	Landmark	Local Co-ordinate Reference:	Well Booth 4-26
Company:	BAYSWATER EXPLORATION & PRODUCTION	TVD Reference:	WELL @ 4909.0ft (Original Well Elev)
Project:	SEC.26-T7N-R65W	MD Reference:	WELL @ 4909.0ft (Original Well Elev)
Site:	Booth 8 Pad Sec.26-T7N-R65W	North Reference:	True
Well:	Booth 4-26	Survey Calculation Method:	Minimum Curvature
Wellbore:	Wellbore #1		
Design:	Plan #1 (5-22-12)		

Planned Survey

Measured Depth (ft)	Inclination (°)	Azimuth (°)	Vertical Depth (ft)	+N/-S (ft)	+E/-W (ft)	Vertical Section (ft)	Dogleg Rate (°/100ft)	Build Rate (°/100ft)	Turn Rate (°/100ft)
0.0	0.00	0.00	0.0	0.0	0.0	0.0	0.00	0.00	0.00
40.0	0.00	0.00	40.0	0.0	0.0	0.0	0.00	0.00	0.00
80.0	0.00	0.00	80.0	0.0	0.0	0.0	0.00	0.00	0.00
100.0	0.00	0.00	100.0	0.0	0.0	0.0	0.00	0.00	0.00
120.0	0.40	263.31	120.0	0.0	-0.1	0.1	2.00	2.00	0.00
160.0	1.20	263.31	160.0	-0.1	-0.6	0.6	2.00	2.00	0.00
200.0	2.00	263.31	200.0	-0.2	-1.7	1.7	2.00	2.00	0.00
240.0	2.80	263.31	239.9	-0.4	-3.4	3.4	2.00	2.00	0.00
280.0	3.60	263.31	279.9	-0.7	-5.6	5.7	2.00	2.00	0.00
320.0	4.40	263.31	319.8	-1.0	-8.4	8.4	2.00	2.00	0.00
360.0	5.20	263.31	359.6	-1.4	-11.7	11.8	2.00	2.00	0.00
400.0	6.00	263.31	399.5	-1.8	-15.6	15.7	2.00	2.00	0.00
440.0	6.80	263.31	439.2	-2.3	-20.0	20.2	2.00	2.00	0.00
480.0	7.60	263.31	478.9	-2.9	-25.0	25.2	2.00	2.00	0.00
520.0	8.40	263.31	518.5	-3.6	-30.5	30.7	2.00	2.00	0.00
560.0	9.20	263.31	558.0	-4.3	-36.6	36.9	2.00	2.00	0.00
600.0	10.00	263.31	597.5	-5.1	-43.2	43.5	2.00	2.00	0.00
640.0	10.80	263.31	636.8	-5.9	-50.4	50.7	2.00	2.00	0.00
680.0	11.60	263.31	676.0	-6.8	-58.1	58.5	2.00	2.00	0.00
694.3	11.89	263.31	690.0	-7.2	-61.0	61.4	2.00	2.00	0.00
8 5/8"									
720.0	12.40	263.31	715.2	-7.8	-66.4	66.8	2.00	2.00	0.00
760.0	13.20	263.31	754.2	-8.8	-75.2	75.7	2.00	2.00	0.00
800.0	14.00	263.31	793.1	-9.9	-84.5	85.1	2.00	2.00	0.00
840.0	14.80	263.31	831.8	-11.1	-94.4	95.0	2.00	2.00	0.00
880.0	15.60	263.31	870.4	-12.3	-104.8	105.5	2.00	2.00	0.00
920.0	16.40	263.31	908.8	-13.6	-115.8	116.6	2.00	2.00	0.00
960.0	17.20	263.31	947.1	-14.9	-127.2	128.1	2.00	2.00	0.00
1,000.0	18.00	263.31	985.3	-16.3	-139.3	140.2	2.00	2.00	0.00
1,040.0	18.80	263.31	1,023.2	-17.8	-151.8	152.8	2.00	2.00	0.00
1,080.0	19.60	263.31	1,061.0	-19.3	-164.9	166.0	2.00	2.00	0.00
1,120.0	20.40	263.31	1,098.6	-20.9	-178.5	179.7	2.00	2.00	0.00
1,160.0	21.20	263.31	1,136.0	-22.6	-192.6	193.9	2.00	2.00	0.00
1,200.0	22.00	263.31	1,173.2	-24.3	-207.2	208.6	2.00	2.00	0.00
1,240.0	22.80	263.31	1,210.2	-26.1	-222.3	223.8	2.00	2.00	0.00
1,280.0	23.60	263.31	1,246.9	-27.9	-238.0	239.6	2.00	2.00	0.00
1,320.0	24.40	263.31	1,283.5	-29.8	-254.1	255.9	2.00	2.00	0.00
1,327.9	24.56	263.31	1,290.7	-30.2	-257.4	259.2	2.00	2.00	0.00
1,360.0	24.56	263.31	1,319.8	-31.7	-270.6	272.5	0.00	0.00	0.00
1,400.0	24.56	263.31	1,356.2	-33.7	-287.1	289.1	0.00	0.00	0.00
1,440.0	24.56	263.31	1,392.6	-35.6	-303.7	305.7	0.00	0.00	0.00
1,480.0	24.56	263.31	1,429.0	-37.5	-320.2	322.4	0.00	0.00	0.00
1,520.0	24.56	263.31	1,465.4	-39.5	-336.7	339.0	0.00	0.00	0.00
1,560.0	24.56	263.31	1,501.8	-41.4	-353.2	355.6	0.00	0.00	0.00
1,600.0	24.56	263.31	1,538.1	-43.4	-369.7	372.2	0.00	0.00	0.00
1,640.0	24.56	263.31	1,574.5	-45.3	-386.2	388.9	0.00	0.00	0.00
1,680.0	24.56	263.31	1,610.9	-47.2	-402.7	405.5	0.00	0.00	0.00
1,720.0	24.56	263.31	1,647.3	-49.2	-419.2	422.1	0.00	0.00	0.00
1,760.0	24.56	263.31	1,683.7	-51.1	-435.8	438.7	0.00	0.00	0.00
1,800.0	24.56	263.31	1,720.0	-53.0	-452.3	455.4	0.00	0.00	0.00
1,840.0	24.56	263.31	1,756.4	-55.0	-468.8	472.0	0.00	0.00	0.00
1,880.0	24.56	263.31	1,792.8	-56.9	-485.3	488.6	0.00	0.00	0.00
1,920.0	24.56	263.31	1,829.2	-58.8	-501.8	505.2	0.00	0.00	0.00

Database:	Landmark	Local Co-ordinate Reference:	Well Booth 4-26
Company:	BAYSWATER EXPLORATION & PRODUCTION	TVD Reference:	WELL @ 4909.0ft (Original Well Elev)
Project:	SEC.26-T7N-R65W	MD Reference:	WELL @ 4909.0ft (Original Well Elev)
Site:	Booth 8 Pad Sec.26-T7N-R65W	North Reference:	True
Well:	Booth 4-26	Survey Calculation Method:	Minimum Curvature
Wellbore:	Wellbore #1		
Design:	Plan #1 (5-22-12)		

Planned Survey									
Measured Depth (ft)	Inclination (°)	Azimuth (°)	Vertical Depth (ft)	+N/-S (ft)	+E/-W (ft)	Vertical Section (ft)	Dogleg Rate (°/100ft)	Build Rate (°/100ft)	Turn Rate (°/100ft)
1,960.0	24.56	263.31	1,865.6	-60.8	-518.3	521.9	0.00	0.00	0.00
2,000.0	24.56	263.31	1,901.9	-62.7	-534.8	538.5	0.00	0.00	0.00
2,040.0	24.56	263.31	1,938.3	-64.7	-551.3	555.1	0.00	0.00	0.00
2,080.0	24.56	263.31	1,974.7	-66.6	-567.8	571.7	0.00	0.00	0.00
2,120.0	24.56	263.31	2,011.1	-68.5	-584.4	588.4	0.00	0.00	0.00
2,160.0	24.56	263.31	2,047.5	-70.5	-600.9	605.0	0.00	0.00	0.00
2,200.0	24.56	263.31	2,083.9	-72.4	-617.4	621.6	0.00	0.00	0.00
2,240.0	24.56	263.31	2,120.2	-74.3	-633.9	638.2	0.00	0.00	0.00
2,280.0	24.56	263.31	2,156.6	-76.3	-650.4	654.9	0.00	0.00	0.00
2,320.0	24.56	263.31	2,193.0	-78.2	-666.9	671.5	0.00	0.00	0.00
2,360.0	24.56	263.31	2,229.4	-80.1	-683.4	688.1	0.00	0.00	0.00
2,400.0	24.56	263.31	2,265.8	-82.1	-699.9	704.7	0.00	0.00	0.00
2,440.0	24.56	263.31	2,302.1	-84.0	-716.5	721.4	0.00	0.00	0.00
2,480.0	24.56	263.31	2,338.5	-86.0	-733.0	738.0	0.00	0.00	0.00
2,520.0	24.56	263.31	2,374.9	-87.9	-749.5	754.6	0.00	0.00	0.00
2,560.0	24.56	263.31	2,411.3	-89.8	-766.0	771.2	0.00	0.00	0.00
2,600.0	24.56	263.31	2,447.7	-91.8	-782.5	787.9	0.00	0.00	0.00
2,640.0	24.56	263.31	2,484.1	-93.7	-799.0	804.5	0.00	0.00	0.00
2,680.0	24.56	263.31	2,520.4	-95.6	-815.5	821.1	0.00	0.00	0.00
2,720.0	24.56	263.31	2,556.8	-97.6	-832.0	837.7	0.00	0.00	0.00
2,760.0	24.56	263.31	2,593.2	-99.5	-848.5	854.4	0.00	0.00	0.00
2,800.0	24.56	263.31	2,629.6	-101.4	-865.1	871.0	0.00	0.00	0.00
2,840.0	24.56	263.31	2,666.0	-103.4	-881.6	887.6	0.00	0.00	0.00
2,880.0	24.56	263.31	2,702.3	-105.3	-898.1	904.2	0.00	0.00	0.00
2,920.0	24.56	263.31	2,738.7	-107.3	-914.6	920.9	0.00	0.00	0.00
2,960.0	24.56	263.31	2,775.1	-109.2	-931.1	937.5	0.00	0.00	0.00
3,000.0	24.56	263.31	2,811.5	-111.1	-947.6	954.1	0.00	0.00	0.00
3,040.0	24.56	263.31	2,847.9	-113.1	-964.1	970.7	0.00	0.00	0.00
3,080.0	24.56	263.31	2,884.2	-115.0	-980.6	987.4	0.00	0.00	0.00
3,120.0	24.56	263.31	2,920.6	-116.9	-997.2	1,004.0	0.00	0.00	0.00
3,160.0	24.56	263.31	2,957.0	-118.9	-1,013.7	1,020.6	0.00	0.00	0.00
3,200.0	24.56	263.31	2,993.4	-120.8	-1,030.2	1,037.2	0.00	0.00	0.00
3,240.0	24.56	263.31	3,029.8	-122.7	-1,046.7	1,053.9	0.00	0.00	0.00
3,280.0	24.56	263.31	3,066.2	-124.7	-1,063.2	1,070.5	0.00	0.00	0.00
3,320.0	24.56	263.31	3,102.5	-126.6	-1,079.7	1,087.1	0.00	0.00	0.00
3,360.0	24.56	263.31	3,138.9	-128.6	-1,096.2	1,103.7	0.00	0.00	0.00
3,400.0	24.56	263.31	3,175.3	-130.5	-1,112.7	1,120.4	0.00	0.00	0.00
3,440.0	24.56	263.31	3,211.7	-132.4	-1,129.2	1,137.0	0.00	0.00	0.00
3,480.0	24.56	263.31	3,248.1	-134.4	-1,145.8	1,153.6	0.00	0.00	0.00
3,520.0	24.56	263.31	3,284.4	-136.3	-1,162.3	1,170.2	0.00	0.00	0.00
3,560.0	24.56	263.31	3,320.8	-138.2	-1,178.8	1,186.9	0.00	0.00	0.00
3,600.0	24.56	263.31	3,357.2	-140.2	-1,195.3	1,203.5	0.00	0.00	0.00
3,640.0	24.56	263.31	3,393.6	-142.1	-1,211.8	1,220.1	0.00	0.00	0.00
3,680.0	24.56	263.31	3,430.0	-144.0	-1,228.3	1,236.7	0.00	0.00	0.00
3,720.0	24.56	263.31	3,466.4	-146.0	-1,244.8	1,253.4	0.00	0.00	0.00
3,760.0	24.56	263.31	3,502.7	-147.9	-1,261.3	1,270.0	0.00	0.00	0.00
3,800.0	24.56	263.31	3,539.1	-149.9	-1,277.9	1,286.6	0.00	0.00	0.00
3,840.0	24.56	263.31	3,575.5	-151.8	-1,294.4	1,303.2	0.00	0.00	0.00
3,880.0	24.56	263.31	3,611.9	-153.7	-1,310.9	1,319.9	0.00	0.00	0.00
3,920.0	24.56	263.31	3,648.3	-155.7	-1,327.4	1,336.5	0.00	0.00	0.00
3,960.0	24.56	263.31	3,684.6	-157.6	-1,343.9	1,353.1	0.00	0.00	0.00
4,000.0	24.56	263.31	3,721.0	-159.5	-1,360.4	1,369.7	0.00	0.00	0.00
4,040.0	24.56	263.31	3,757.4	-161.5	-1,376.9	1,386.4	0.00	0.00	0.00

Database:	Landmark	Local Co-ordinate Reference:	Well Booth 4-26
Company:	BAYSWATER EXPLORATION & PRODUCTION	TVD Reference:	WELL @ 4909.0ft (Original Well Elev)
Project:	SEC.26-T7N-R65W	MD Reference:	WELL @ 4909.0ft (Original Well Elev)
Site:	Booth 8 Pad Sec.26-T7N-R65W	North Reference:	True
Well:	Booth 4-26	Survey Calculation Method:	Minimum Curvature
Wellbore:	Wellbore #1		
Design:	Plan #1 (5-22-12)		

Planned Survey									
Measured Depth (ft)	Inclination (°)	Azimuth (°)	Vertical Depth (ft)	+N/-S (ft)	+E/-W (ft)	Vertical Section (ft)	Dogleg Rate (°/100ft)	Build Rate (°/100ft)	Turn Rate (°/100ft)
4,080.0	24.56	263.31	3,793.8	-163.4	-1,393.4	1,403.0	0.00	0.00	0.00
4,112.1	24.56	263.31	3,823.0	-165.0	-1,406.7	1,416.3	0.00	0.00	0.00
PARKMAN									
4,120.0	24.56	263.31	3,830.2	-165.3	-1,409.9	1,419.6	0.00	0.00	0.00
4,160.0	24.56	263.31	3,866.5	-167.3	-1,426.5	1,436.2	0.00	0.00	0.00
4,200.0	24.56	263.31	3,902.9	-169.2	-1,443.0	1,452.9	0.00	0.00	0.00
4,240.0	24.56	263.31	3,939.3	-171.2	-1,459.5	1,469.5	0.00	0.00	0.00
4,280.0	24.56	263.31	3,975.7	-173.1	-1,476.0	1,486.1	0.00	0.00	0.00
4,320.0	24.56	263.31	4,012.1	-175.0	-1,492.5	1,502.7	0.00	0.00	0.00
4,360.0	24.56	263.31	4,048.5	-177.0	-1,509.0	1,519.4	0.00	0.00	0.00
4,400.0	24.56	263.31	4,084.8	-178.9	-1,525.5	1,536.0	0.00	0.00	0.00
4,440.0	24.56	263.31	4,121.2	-180.8	-1,542.0	1,552.6	0.00	0.00	0.00
4,480.0	24.56	263.31	4,157.6	-182.8	-1,558.6	1,569.2	0.00	0.00	0.00
4,520.0	24.56	263.31	4,194.0	-184.7	-1,575.1	1,585.9	0.00	0.00	0.00
4,560.0	24.56	263.31	4,230.4	-186.6	-1,591.6	1,602.5	0.00	0.00	0.00
4,600.0	24.56	263.31	4,266.7	-188.6	-1,608.1	1,619.1	0.00	0.00	0.00
4,640.0	24.56	263.31	4,303.1	-190.5	-1,624.6	1,635.7	0.00	0.00	0.00
4,680.0	24.56	263.31	4,339.5	-192.5	-1,641.1	1,652.4	0.00	0.00	0.00
4,720.0	24.56	263.31	4,375.9	-194.4	-1,657.6	1,669.0	0.00	0.00	0.00
4,760.0	24.56	263.31	4,412.3	-196.3	-1,674.1	1,685.6	0.00	0.00	0.00
4,800.0	24.56	263.31	4,448.6	-198.3	-1,690.6	1,702.2	0.00	0.00	0.00
4,840.0	24.56	263.31	4,485.0	-200.2	-1,707.2	1,718.9	0.00	0.00	0.00
4,880.0	24.56	263.31	4,521.4	-202.1	-1,723.7	1,735.5	0.00	0.00	0.00
4,920.0	24.56	263.31	4,557.8	-204.1	-1,740.2	1,752.1	0.00	0.00	0.00
4,942.2	24.56	263.31	4,578.0	-205.1	-1,749.4	1,761.3	0.00	0.00	0.00
SUSSEX									
4,960.0	24.56	263.31	4,594.2	-206.0	-1,756.7	1,768.7	0.00	0.00	0.00
5,000.0	24.56	263.31	4,630.6	-207.9	-1,773.2	1,785.4	0.00	0.00	0.00
5,040.0	24.56	263.31	4,666.9	-209.9	-1,789.7	1,802.0	0.00	0.00	0.00
5,080.0	24.56	263.31	4,703.3	-211.8	-1,806.2	1,818.6	0.00	0.00	0.00
5,120.0	24.56	263.31	4,739.7	-213.8	-1,822.7	1,835.2	0.00	0.00	0.00
5,160.0	24.56	263.31	4,776.1	-215.7	-1,839.3	1,851.9	0.00	0.00	0.00
5,196.5	24.56	263.31	4,809.3	-217.5	-1,854.3	1,867.0	0.00	0.00	0.00
5,200.0	24.49	263.31	4,812.5	-217.6	-1,855.8	1,868.5	2.00	-2.00	0.00
5,240.0	23.69	263.31	4,849.0	-219.5	-1,872.0	1,884.8	2.00	-2.00	0.00
5,280.0	22.89	263.31	4,885.7	-221.4	-1,887.7	1,900.6	2.00	-2.00	0.00
5,320.0	22.09	263.31	4,922.7	-223.2	-1,902.9	1,915.9	2.00	-2.00	0.00
5,360.0	21.29	263.31	4,959.8	-224.9	-1,917.6	1,930.7	2.00	-2.00	0.00
5,400.0	20.49	263.31	4,997.2	-226.5	-1,931.7	1,945.0	2.00	-2.00	0.00
5,440.0	19.69	263.31	5,034.8	-228.1	-1,945.4	1,958.7	2.00	-2.00	0.00
5,480.0	18.89	263.31	5,072.5	-229.7	-1,958.5	1,971.9	2.00	-2.00	0.00
5,520.0	18.09	263.31	5,110.5	-231.2	-1,971.1	1,984.6	2.00	-2.00	0.00
5,538.4	17.72	263.31	5,128.0	-231.8	-1,976.7	1,990.3	2.00	-2.00	0.00
SHANNON									
5,560.0	17.29	263.31	5,148.6	-232.6	-1,983.2	1,996.8	2.00	-2.00	0.00
5,600.0	16.49	263.31	5,186.9	-233.9	-1,994.7	2,008.4	2.00	-2.00	0.00
5,640.0	15.69	263.31	5,225.3	-235.2	-2,005.7	2,019.5	2.00	-2.00	0.00
5,680.0	14.89	263.31	5,263.9	-236.4	-2,016.2	2,030.0	2.00	-2.00	0.00
5,720.0	14.09	263.31	5,302.6	-237.6	-2,026.1	2,040.0	2.00	-2.00	0.00
5,760.0	13.29	263.31	5,341.5	-238.7	-2,035.5	2,049.5	2.00	-2.00	0.00
5,800.0	12.49	263.31	5,380.5	-239.7	-2,044.4	2,058.4	2.00	-2.00	0.00
5,840.0	11.69	263.31	5,419.6	-240.7	-2,052.7	2,066.8	2.00	-2.00	0.00
5,880.0	10.89	263.31	5,458.8	-241.6	-2,060.5	2,074.6	2.00	-2.00	0.00

Database:	Landmark	Local Co-ordinate Reference:	Well Booth 4-26
Company:	BAYSWATER EXPLORATION & PRODUCTION	TVD Reference:	WELL @ 4909.0ft (Original Well Elev)
Project:	SEC.26-T7N-R65W	MD Reference:	WELL @ 4909.0ft (Original Well Elev)
Site:	Booth 8 Pad Sec.26-T7N-R65W	North Reference:	True
Well:	Booth 4-26	Survey Calculation Method:	Minimum Curvature
Wellbore:	Wellbore #1		
Design:	Plan #1 (5-22-12)		

Planned Survey

Measured Depth (ft)	Inclination (°)	Azimuth (°)	Vertical Depth (ft)	+N/-S (ft)	+E/-W (ft)	Vertical Section (ft)	Dogleg Rate (°/100ft)	Build Rate (°/100ft)	Turn Rate (°/100ft)
5,920.0	10.09	263.31	5,498.1	-242.5	-2,067.7	2,081.9	2.00	-2.00	0.00
5,960.0	9.29	263.31	5,537.6	-243.3	-2,074.4	2,088.6	2.00	-2.00	0.00
6,000.0	8.49	263.31	5,577.1	-244.0	-2,080.6	2,094.8	2.00	-2.00	0.00
6,040.0	7.69	263.31	5,616.7	-244.6	-2,086.1	2,100.4	2.00	-2.00	0.00
6,080.0	6.89	263.31	5,656.4	-245.2	-2,091.2	2,105.5	2.00	-2.00	0.00
6,120.0	6.09	263.31	5,696.1	-245.8	-2,095.7	2,110.0	2.00	-2.00	0.00
6,160.0	5.29	263.31	5,735.9	-246.2	-2,099.6	2,114.0	2.00	-2.00	0.00
6,200.0	4.49	263.31	5,775.8	-246.6	-2,103.0	2,117.4	2.00	-2.00	0.00
6,240.0	3.69	263.31	5,815.6	-247.0	-2,105.8	2,120.3	2.00	-2.00	0.00
6,280.0	2.89	263.31	5,855.6	-247.2	-2,108.1	2,122.6	2.00	-2.00	0.00
6,320.0	2.09	263.31	5,895.5	-247.4	-2,109.8	2,124.3	2.00	-2.00	0.00
6,360.0	1.29	263.31	5,935.5	-247.6	-2,111.0	2,125.5	2.00	-2.00	0.00
6,400.0	0.49	263.31	5,975.5	-247.6	-2,111.6	2,126.1	2.00	-2.00	0.00
6,424.5	0.00	0.00	6,000.0	-247.6	-2,111.7	2,126.2	2.00	-2.00	0.00
TARGET BHL 678'FNL, 668'FWL									
6,440.0	0.00	0.00	6,015.5	-247.6	-2,111.7	2,126.2	0.00	0.00	0.00
6,480.0	0.00	0.00	6,055.5	-247.6	-2,111.7	2,126.2	0.00	0.00	0.00
6,520.0	0.00	0.00	6,095.5	-247.6	-2,111.7	2,126.2	0.00	0.00	0.00
6,560.0	0.00	0.00	6,135.5	-247.6	-2,111.7	2,126.2	0.00	0.00	0.00
6,600.0	0.00	0.00	6,175.5	-247.6	-2,111.7	2,126.2	0.00	0.00	0.00
6,640.0	0.00	0.00	6,215.5	-247.6	-2,111.7	2,126.2	0.00	0.00	0.00
6,680.0	0.00	0.00	6,255.5	-247.6	-2,111.7	2,126.2	0.00	0.00	0.00
6,720.0	0.00	0.00	6,295.5	-247.6	-2,111.7	2,126.2	0.00	0.00	0.00
6,760.0	0.00	0.00	6,335.5	-247.6	-2,111.7	2,126.2	0.00	0.00	0.00
6,800.0	0.00	0.00	6,375.5	-247.6	-2,111.7	2,126.2	0.00	0.00	0.00
6,840.0	0.00	0.00	6,415.5	-247.6	-2,111.7	2,126.2	0.00	0.00	0.00
6,880.0	0.00	0.00	6,455.5	-247.6	-2,111.7	2,126.2	0.00	0.00	0.00
6,920.0	0.00	0.00	6,495.5	-247.6	-2,111.7	2,126.2	0.00	0.00	0.00
6,960.0	0.00	0.00	6,535.5	-247.6	-2,111.7	2,126.2	0.00	0.00	0.00
7,000.0	0.00	0.00	6,575.5	-247.6	-2,111.7	2,126.2	0.00	0.00	0.00
7,040.0	0.00	0.00	6,615.5	-247.6	-2,111.7	2,126.2	0.00	0.00	0.00
7,080.0	0.00	0.00	6,655.5	-247.6	-2,111.7	2,126.2	0.00	0.00	0.00
7,120.0	0.00	0.00	6,695.5	-247.6	-2,111.7	2,126.2	0.00	0.00	0.00
7,160.0	0.00	0.00	6,735.5	-247.6	-2,111.7	2,126.2	0.00	0.00	0.00
7,200.0	0.00	0.00	6,775.5	-247.6	-2,111.7	2,126.2	0.00	0.00	0.00
7,240.0	0.00	0.00	6,815.5	-247.6	-2,111.7	2,126.2	0.00	0.00	0.00
7,280.0	0.00	0.00	6,855.5	-247.6	-2,111.7	2,126.2	0.00	0.00	0.00
7,320.0	0.00	0.00	6,895.5	-247.6	-2,111.7	2,126.2	0.00	0.00	0.00
7,352.5	0.00	0.00	6,928.0	-247.6	-2,111.7	2,126.2	0.00	0.00	0.00
NIOBRARA - LEGAL BOX 400' X 400' 679'FNL & 669'FWL - TARGET CIRCLE 678'FNL & 668'FWL									
7,360.0	0.00	0.00	6,935.5	-247.6	-2,111.7	2,126.2	0.00	0.00	0.00
7,400.0	0.00	0.00	6,975.5	-247.6	-2,111.7	2,126.2	0.00	0.00	0.00
7,440.0	0.00	0.00	7,015.5	-247.6	-2,111.7	2,126.2	0.00	0.00	0.00
7,480.0	0.00	0.00	7,055.5	-247.6	-2,111.7	2,126.2	0.00	0.00	0.00
7,520.0	0.00	0.00	7,095.5	-247.6	-2,111.7	2,126.2	0.00	0.00	0.00
7,560.0	0.00	0.00	7,135.5	-247.6	-2,111.7	2,126.2	0.00	0.00	0.00
7,600.0	0.00	0.00	7,175.5	-247.6	-2,111.7	2,126.2	0.00	0.00	0.00
7,604.5	0.00	0.00	7,180.0	-247.6	-2,111.7	2,126.2	0.00	0.00	0.00
FORT HAYS									
7,640.0	0.00	0.00	7,215.5	-247.6	-2,111.7	2,126.2	0.00	0.00	0.00
7,648.5	0.00	0.00	7,224.0	-247.6	-2,111.7	2,126.2	0.00	0.00	0.00
CODELL									
7,680.0	0.00	0.00	7,255.5	-247.6	-2,111.7	2,126.2	0.00	0.00	0.00

Formations						
	Measured Depth (ft)	Vertical Depth (ft)	Name	Lithology	Dip (°)	Dip Direction (°)
	4,112.1	3,823.0	PARKMAN		0.00	
	4,942.2	4,578.0	SUSSEX		0.00	
	5,538.4	5,128.0	SHANNON		0.00	
	7,352.5	6,928.0	NIOBRARA		0.00	
	7,604.5	7,180.0	FORT HAYS		0.00	
	7,648.5	7,224.0	CODELL		0.00	
	7,700.5	7,276.0	GREENHORN		0.00	
	7,782.5	7,358.0	GRANEROS		0.00	



Directional

BAYSWATER EXPLORATION & PRODUCTION

SEC.26-T7N-R65W

Booth 8 Pad Sec.26-T7N-R65W

Booth 4-26

Wellbore #1

Plan #1 (5-22-12)

Anticollision Report

24 May, 2012

Company:	BAYSWATER EXPLORATION & PRODUCTION	Local Co-ordinate Reference:	Well Booth 4-26
Project:	SEC.26-T7N-R65W	TVD Reference:	WELL @ 4909.0ft (Original Well Elev)
Reference Site:	Booth 8 Pad Sec.26-T7N-R65W	MD Reference:	WELL @ 4909.0ft (Original Well Elev)
Site Error:	0.0ft	North Reference:	True
Reference Well:	Booth 4-26	Survey Calculation Method:	Minimum Curvature
Well Error:	0.0ft	Output errors are at	2.00 sigma
Reference Wellbore	Wellbore #1	Database:	Landmark
Reference Design:	Plan #1 (5-22-12)	Offset TVD Reference:	Offset Datum

Offset Design Booth 8 Pad Sec.26-T7N-R65W - Booth 31-26 - Wellbore #1 - Plan #1 (5-22-12)													Offset Site Error:	0.0 ft
Survey Program: 0-MWD													Offset Well Error:	0.0 ft
Measured Depth (ft)	Vertical Depth (ft)	Measured Depth (ft)	Vertical Depth (ft)	Reference	Offset	Highside Toolface (°)	Offset Wellbore Centre +N/-S (ft)	Offset Wellbore Centre +E/-W (ft)	Between Centres (ft)	Between Ellipses (ft)	Minimum Separation (ft)	Separation Factor	Warning	
2,300.0	2,174.8	2,306.4	2,162.0	14.6	15.0	-89.40	-218.6	-637.8	143.4	114.1	29.34	4.890		
2,400.0	2,265.8	2,405.7	2,248.7	15.5	16.1	-86.73	-233.2	-684.0	152.9	121.8	31.12	4.915		
2,500.0	2,356.7	2,505.0	2,335.4	16.4	17.1	-84.37	-247.9	-730.1	162.7	129.9	32.85	4.954		
2,600.0	2,447.7	2,604.3	2,422.1	17.3	18.2	-82.29	-262.5	-776.3	172.8	138.2	34.55	5.001		
2,700.0	2,538.6	2,703.6	2,508.9	18.2	19.3	-80.43	-277.2	-822.4	183.0	146.8	36.21	5.054		
2,800.0	2,629.6	2,802.9	2,595.6	19.1	20.3	-78.77	-291.8	-868.5	193.4	155.6	37.85	5.110		
2,900.0	2,720.5	2,902.2	2,682.3	20.0	21.4	-77.29	-306.5	-914.7	204.0	164.5	39.47	5.168		
3,000.0	2,811.5	3,001.5	2,769.0	20.9	22.4	-75.94	-321.1	-960.8	214.6	173.6	41.07	5.226		
3,100.0	2,902.4	3,100.9	2,855.7	21.8	23.5	-74.73	-335.8	-1,007.0	225.4	182.8	42.66	5.284		
3,200.0	2,993.4	3,200.2	2,942.4	22.7	24.6	-73.63	-350.4	-1,053.1	236.3	192.1	44.24	5.341		
3,300.0	3,084.3	3,299.5	3,029.1	23.6	25.6	-72.62	-365.0	-1,099.2	247.2	201.4	45.81	5.398		
3,400.0	3,175.3	3,398.8	3,115.8	24.5	26.7	-71.70	-379.7	-1,145.4	258.3	210.9	47.37	5.452		
3,500.0	3,266.3	3,498.1	3,202.6	25.5	27.8	-70.86	-394.3	-1,191.5	269.3	220.4	48.92	5.506		
3,600.0	3,357.2	3,597.4	3,289.3	26.4	28.8	-70.08	-409.0	-1,237.6	280.5	230.0	50.47	5.558		
3,700.0	3,448.2	3,696.7	3,376.0	27.3	29.9	-69.36	-423.6	-1,283.8	291.7	239.7	52.01	5.608		
3,800.0	3,539.1	3,796.0	3,462.7	28.2	31.0	-68.69	-438.3	-1,329.9	302.9	249.3	53.55	5.656		
3,900.0	3,630.1	3,895.3	3,549.4	29.1	32.0	-68.08	-452.9	-1,376.1	314.1	259.1	55.08	5.703		
4,000.0	3,721.0	3,994.6	3,636.1	30.0	33.1	-67.50	-467.6	-1,422.2	325.4	268.8	56.62	5.748		
4,100.0	3,812.0	4,093.9	3,722.8	30.9	34.2	-66.96	-482.2	-1,468.3	336.8	278.6	58.15	5.792		
4,200.0	3,902.9	4,193.3	3,809.5	31.8	35.2	-66.46	-496.9	-1,514.5	348.1	288.4	59.67	5.834		
4,300.0	3,993.9	4,292.6	3,896.3	32.7	36.3	-65.99	-511.5	-1,560.6	359.5	298.3	61.20	5.874		
4,400.0	4,084.8	4,391.9	3,983.0	33.6	37.4	-65.55	-526.2	-1,606.8	370.9	308.2	62.72	5.913		
4,500.0	4,175.8	4,491.2	4,069.7	34.5	38.4	-65.14	-540.8	-1,652.9	382.3	318.1	64.24	5.951		
4,600.0	4,266.7	4,590.5	4,156.4	35.4	39.5	-64.75	-555.4	-1,699.0	393.7	328.0	65.77	5.987		
4,700.0	4,357.7	4,689.8	4,243.1	36.3	40.6	-64.38	-570.1	-1,745.2	405.2	337.9	67.29	6.022		
4,800.0	4,448.6	4,789.1	4,329.8	37.2	41.6	-64.03	-584.7	-1,791.3	416.7	347.9	68.80	6.056		
4,900.0	4,539.6	4,888.4	4,416.5	38.2	42.7	-63.70	-599.4	-1,837.4	428.2	357.8	70.32	6.089		
5,000.0	4,630.6	4,987.7	4,503.2	39.1	43.8	-63.39	-614.0	-1,883.6	439.7	367.8	71.84	6.120		
5,100.0	4,721.5	5,087.0	4,589.9	40.0	44.8	-63.09	-628.7	-1,929.7	451.2	377.8	73.36	6.150		
5,196.5	4,809.3	5,182.9	4,673.7	40.8	45.9	-62.82	-642.8	-1,974.3	462.3	387.5	74.82	6.179		
5,200.0	4,812.5	5,186.3	4,676.7	40.9	45.9	-62.81	-643.3	-1,975.9	462.7	387.8	74.87	6.180		
5,300.0	4,904.2	5,285.5	4,763.2	41.6	47.0	-62.57	-657.9	-2,021.9	475.1	398.9	76.16	6.238		
5,400.0	4,997.2	5,384.3	4,849.5	42.2	48.0	-62.01	-672.5	-2,067.8	489.1	411.9	77.17	6.338		
5,500.0	5,091.5	5,482.5	4,935.3	42.8	49.1	-61.18	-687.0	-2,113.5	504.9	427.0	77.90	6.482		
5,600.0	5,186.9	5,580.2	5,020.6	43.3	50.1	-60.13	-701.4	-2,158.8	522.6	444.3	78.36	6.670		
5,700.0	5,283.2	5,677.1	5,105.2	43.7	51.2	-58.88	-715.7	-2,203.9	542.4	463.8	78.56	6.904		
5,800.0	5,380.5	5,773.2	5,189.1	44.1	52.2	-57.49	-729.9	-2,248.5	564.4	485.9	78.51	7.188		
5,900.0	5,478.4	5,868.3	5,272.1	44.5	53.2	-56.00	-743.9	-2,292.7	588.7	510.5	78.24	7.525		
6,000.0	5,577.1	5,962.3	5,354.2	44.8	54.2	-54.45	-757.8	-2,336.4	615.7	537.9	77.78	7.916		
6,100.0	5,676.2	6,062.6	5,442.0	45.0	55.3	-52.71	-772.5	-2,382.7	645.1	568.1	77.03	8.375		
6,200.0	5,775.8	6,175.7	5,542.6	45.2	56.2	-50.84	-788.1	-2,431.9	675.1	599.1	75.97	8.887		
6,300.0	5,875.6	6,290.9	5,647.0	45.3	57.1	-49.09	-802.7	-2,478.1	704.9	630.1	74.83	9.420		
6,400.0	5,975.5	6,408.2	5,755.3	45.4	57.8	-47.45	-816.4	-2,521.0	734.5	660.9	73.65	9.973		
6,424.5	6,000.0	6,437.2	5,782.4	45.4	58.0	-143.76	-819.5	-2,530.9	741.7	668.4	73.35	10.112		
6,500.0	6,075.5	6,528.1	5,867.9	45.5	58.6	-142.33	-828.9	-2,560.4	763.1	690.8	72.26	10.559		
6,600.0	6,175.5	6,651.4	5,985.4	45.5	59.2	-140.73	-840.3	-2,596.3	788.8	717.7	71.06	11.100		
6,700.0	6,275.5	6,778.1	6,107.5	45.6	59.8	-139.42	-850.3	-2,628.0	811.2	741.1	70.11	11.570		
6,800.0	6,375.5	6,907.5	6,233.8	45.7	60.2	-138.36	-858.9	-2,655.1	830.1	760.7	69.39	11.963		
6,900.0	6,475.5	7,039.4	6,363.6	45.7	60.6	-137.56	-865.9	-2,677.1	845.3	776.4	68.88	12.272		
7,000.0	6,575.5	7,173.2	6,496.3	45.8	60.9	-136.98	-871.2	-2,693.6	856.5	788.0	68.57	12.491		
7,100.0	6,675.5	7,308.3	6,630.9	45.9	61.1	-136.61	-874.5	-2,704.2	863.7	795.3	68.45	12.618		

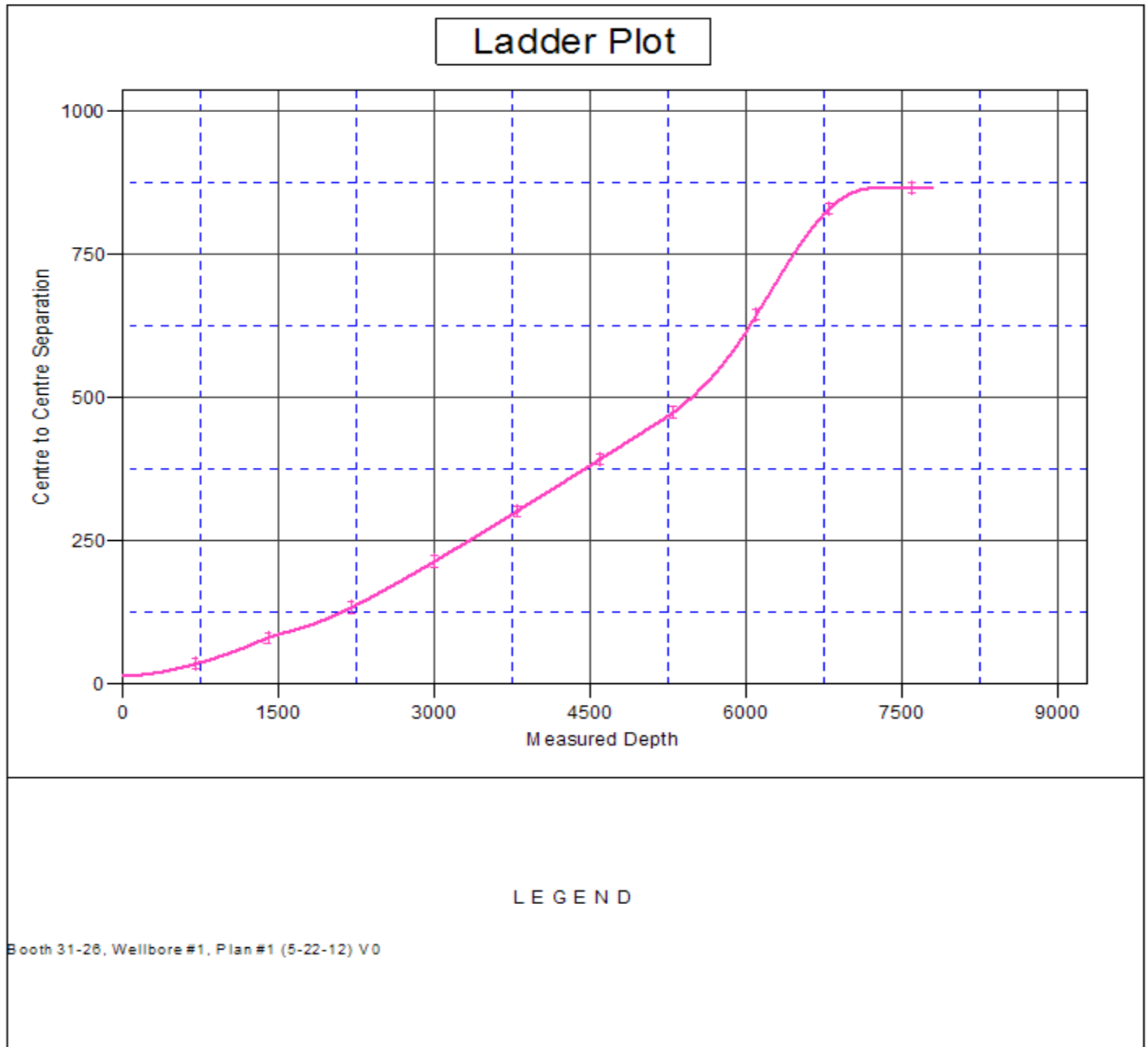
CC - Min centre to center distance or convergent point, SF - min separation factor, ES - min ellipse separation

Company:	BAYSWATER EXPLORATION & PRODUCTION	Local Co-ordinate Reference:	Well Booth 4-26
Project:	SEC.26-T7N-R65W	TVD Reference:	WELL @ 4909.0ft (Original Well Elev)
Reference Site:	Booth 8 Pad Sec.26-T7N-R65W	MD Reference:	WELL @ 4909.0ft (Original Well Elev)
Site Error:	0.0ft	North Reference:	True
Reference Well:	Booth 4-26	Survey Calculation Method:	Minimum Curvature
Well Error:	0.0ft	Output errors are at	2.00 sigma
Reference Wellbore	Wellbore #1	Database:	Landmark
Reference Design:	Plan #1 (5-22-12)	Offset TVD Reference:	Offset Datum

Offset Design Booth 8 Pad Sec.26-T7N-R65W - Booth 31-26 - Wellbore #1 - Plan #1 (5-22-12)												Offset Site Error:	0.0 ft
Survey Program: 0-MWD												Offset Well Error:	0.0 ft
Reference	Offset	Semi Major Axis		Distance									
Measured Depth (ft)	Vertical Depth (ft)	Measured Depth (ft)	Vertical Depth (ft)	Reference (ft)	Offset (ft)	Highside Toolface (°)	Offset Wellbore Centre +N/-S (ft)	Offset Wellbore Centre +E/-W (ft)	Between Centres (ft)	Between Ellipses (ft)	Minimum Separation (ft)	Separation Factor	Warning
7,200.0	6,775.5	7,444.2	6,766.7	45.9	61.3	-136.46	-876.0	-2,708.8	866.8	798.3	68.51	12.653	
7,300.0	6,875.5	7,553.0	6,875.5	46.0	61.3	-136.45	-876.0	-2,709.0	867.0	798.3	68.68	12.622	
7,400.0	6,975.5	7,653.0	6,975.5	46.1	61.4	-136.45	-876.0	-2,709.0	867.0	798.1	68.86	12.590	
7,500.0	7,075.5	7,753.0	7,075.5	46.1	61.4	-136.45	-876.0	-2,709.0	867.0	797.9	69.04	12.558	
7,600.0	7,175.5	7,853.0	7,175.5	46.2	61.5	-136.45	-876.0	-2,709.0	867.0	797.7	69.22	12.525	
7,700.0	7,275.5	7,953.0	7,275.5	46.3	61.5	-136.45	-876.0	-2,709.0	867.0	797.6	69.40	12.492	
7,799.5	7,375.0	8,052.5	7,375.0	46.4	61.6	-136.45	-876.0	-2,709.0	867.0	797.4	69.58	12.459	

Company:	BAYSWATER EXPLORATION & PRODUCTION	Local Co-ordinate Reference:	Well Booth 4-26
Project:	SEC.26-T7N-R65W	TVD Reference:	WELL @ 4909.0ft (Original Well Elev)
Reference Site:	Booth 8 Pad Sec.26-T7N-R65W	MD Reference:	WELL @ 4909.0ft (Original Well Elev)
Site Error:	0.0ft	North Reference:	True
Reference Well:	Booth 4-26	Survey Calculation Method:	Minimum Curvature
Well Error:	0.0ft	Output errors are at	2.00 sigma
Reference Wellbore	Wellbore #1	Database:	Landmark
Reference Design:	Plan #1 (5-22-12)	Offset TVD Reference:	Offset Datum

Reference Depths are relative to WELL @ 4909.0ft (Original Well Elev) Coordinates are relative to: Booth 4-26
Offset Depths are relative to Offset Datum Coordinate System is US State Plane 1983, Colorado Northern Zone
Central Meridian is -105.500000 ° Grid Convergence at Surface is: 0.56°



Company:	BAYSWATER EXPLORATION & PRODUCTION	Local Co-ordinate Reference:	Well Booth 4-26
Project:	SEC.26-T7N-R65W	TVD Reference:	WELL @ 4909.0ft (Original Well Elev)
Reference Site:	Booth 8 Pad Sec.26-T7N-R65W	MD Reference:	WELL @ 4909.0ft (Original Well Elev)
Site Error:	0.0ft	North Reference:	True
Reference Well:	Booth 4-26	Survey Calculation Method:	Minimum Curvature
Well Error:	0.0ft	Output errors are at	2.00 sigma
Reference Wellbore	Wellbore #1	Database:	Landmark
Reference Design:	Plan #1 (5-22-12)	Offset TVD Reference:	Offset Datum

Reference Depths are relative to WELL @ 4909.0ft (Original Well Elev) Coordinates are relative to: Booth 4-26
Offset Depths are relative to Offset Datum
Central Meridian is -105.500000 °
Coordinate System is US State Plane 1983, Colorado Northern Zone
Grid Convergence at Surface is: 0.56°

