

## The Road to Excellence Starts with Safety

Sold To #: 304535	Ship To #: 2334005	Quote #:	Sales Order #: 9535692
Customer: PDC ENERGY EBUS	Customer Rep: SAILORS, CHAD		
Well Name: Webster	Well #: 32-11	API/UWI #: 05-123-21954	
Field: WARRENER	City (SAP): KERSEY	County/Parish: Weld	State: Colorado
Job Purpose: Recement Service			
Well Type: Development Well	Job Type: Recement Service		
Sales Person: AARON, WESLEY	Srvc Supervisor: FANTASIA, JOSEPH	MBU ID Emp #: 485445	

## Job Personnel

HES Emp Name	Exp Hrs	Emp #	HES Emp Name	Exp Hrs	Emp #	HES Emp Name	Exp Hrs	Emp #
BULINSKI, MATTHEW J	4.5	483865	CARPENTER, JACOB P	4.5	499500	FANTASIA, JOSEPH Brandon	4.5	485445
ROMERO, JOSEPH M	4.5	512137	SEALE, ANDREW W	4.5	511496			

## Equipment

HES Unit #	Distance-1 way	HES Unit #	Distance-1 way	HES Unit #	Distance-1 way	HES Unit #	Distance-1 way
10248062C	40 mile	11142998	40 mile	11542778	40 mile	11633848	40 mile
11645063	40 mile						

## Job Hours

Date	On Location Hours	Operating Hours	Date	On Location Hours	Operating Hours	Date	On Location Hours	Operating Hours
5-23-2012	4.5	4						
TOTAL			Total is the sum of each column separately					

## Job

Formation Name					Date	Time	Time Zone	
Formation Depth (MD)	Top		Bottom		Called Out	23 - May - 2012	02:00	MST
Form Type			BHST		On Location	23 - May - 2012	05:30	MST
Job depth MD	3400. ft		Job Depth TVD	3400. ft	Job Started	23 - May - 2012	06:56	MST
Water Depth			Wk Ht Above Floor		Job Completed	23 - May - 2012	09:23	MST
Perforation Depth (MD)	From		To		Departed Loc	23 - May - 2012	10:00	MST

## Well Data

Description	New / Used	Max pressure psig	Size in	ID in	Weight lbm/ft	Thread	Grade	Top MD ft	Bottom MD ft	Top TVD ft	Bottom TVD ft
Open hole Section				9.				.	3400.	.	3400.
Production Casing	Used		4.5	4.	11.6		J-55	.	7380.	.	7380.
Surface Casing tubing	Used		8.625	8.097	24.		J-55	.	451.	.	451.
	Unknown		1.25	.824	2.4		J-55	.	3400.	.	3400.

## Tools and Accessories

Type	Size	Qty	Make	Depth	Type	Size	Qty	Make	Depth	Type	Size	Qty	Make
Guide Shoe					Packer					Top Plug			
Float Shoe					Bridge Plug					Bottom Plug			
Float Collar					Retainer					SSR plug set			
Insert Float										Plug Container			
Stage Tool										Centralizers			

## Miscellaneous Materials

Gelling Agt	Conc	Surfactant	Conc	Acid Type	Qty	Conc	%
Treatment Fld	Conc	Inhibitor	Conc	Sand Type	Size	Qty	

## Fluid Data

Stage/Plug #: 1
-----------------

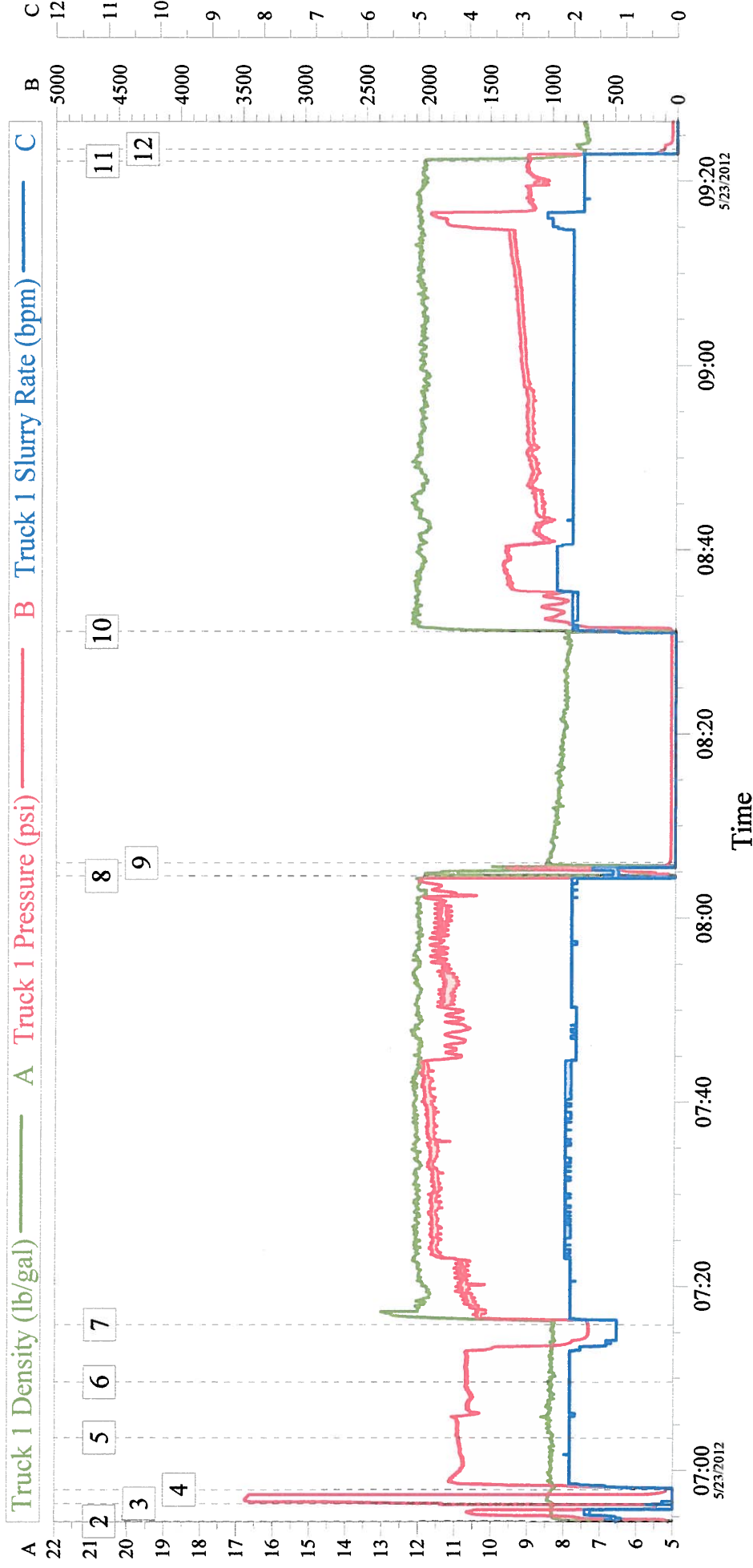
Fluid #	Stage Type	Fluid Name	Qty	Qty uom	Mixing Density lbm/gal	Yield ft <sup>3</sup> /sk	Mix Fluid Gal/sk	Rate bbl/min	Total Mix Fluid Gal/sk
1	ClayWeb Water Spacer		10.00	bbl	8.33	.0	.0	2.0	
2	MUD FLUSH III	MUD FLUSH III - SBM (528788)	12.00	bbl	8.4	.0	.0	2.0	
3	ClayWeb Water Spacer		10.00	bbl	8.33	.0	.0	2.0	
59.525 gal/Mgal		CLA-WEB - TOTE (101985045)							
4	Varicem 12#	VARICEM (TM) CEMENT (452009)	500.0	sacks	12.	2.18	12.34	2.0	12.34
12.34 Gal		FRESH WATER							
<b>Calculated Values</b>		<b>Pressures</b>		<b>Volumes</b>					
Displacement		Shut In: Instant		Lost Returns		Cement Slurry	195	Pad	
Top Of Cement		5 Min		Cement Returns	10	Actual Displacement	2.5	Treatment	
Frac Gradient		15 Min		Spacers	32	Load and Breakdown		Total Job	
<b>Rates</b>									
Circulating	2	Mixing	2	Displacement	2	Avg. Job	2		
Cement Left In Pipe	Amount	0 ft	Reason	Shoe Joint					
Frac Ring # 1 @	ID	Frac ring # 2 @	ID	Frac Ring # 3 @	ID	Frac Ring # 4 @	ID		
The Information Stated Herein Is Correct				Customer Representative Signature					

*The Road to Excellence Starts with Safety*

Sold To #: 304535		Ship To #: 2334005		Quote #:		Sales Order #: 9535692	
Customer: PDC ENERGY EBUS				Customer Rep: SAILORS, CHAD			
Well Name: Webster			Well #: 32-11			API/UWI #: 05-123-21954	
Field: WARRENERG		City (SAP): KERSEY		County/Parish: Weld			State: Colorado
Legal Description:							
Lat: N 0 deg. OR N 0 deg. 0 min. 0 secs.				Long: E 0 deg. OR E 0 deg. 0 min. 0 secs.			
Contractor:			Rig/Platform Name/Num:				
Job Purpose: Recement Service					Ticket Amount:		
Well Type: Development Well			Job Type: Recement Service				
Sales Person: AARON, WESLEY			Srv Supervisor: FANTASIA, JOSEPH			MBU ID Emp #: 485445	

Activity Description	Date/Time	Cht #	Rate bbl/ min	Volume bbl		Pressure psig		Comments
				Stage	Total	Tubing	Casing	
Arrive at Location from Service Center	05/23/2012 05:30							
Assessment Of Location Safety Meeting	05/23/2012 05:45							
Start Job	05/23/2012 06:50							
Test Lines	05/23/2012 06:56							PRESSURE TEST LINES TO 3500 PSI
Pump Spacer 1	05/23/2012 06:57		2	10			1950.0	10 BBLs WATER WITH CLAYWEB ADDED
Pump Spacer 2	05/23/2012 07:03		2	12			1852.0	12 BBLs MUDFLUSH
Pump Spacer 1	05/23/2012 07:09		2	10			1923.0	10 BBLs WATER WITH CLAYWEB ADDED
Pump Cement	05/23/2012 07:15		2	97			1971.0	250 SKS VARICEM MIXED AT 12 PPG USING SUPPLIED WATER
Pump Displacement	05/23/2012 08:04		2	1.5			1956.0	DISPLACE 1.5 BEHIND CEMENT
Shutdown	05/23/2012 08:06							RIG PULLS 50 JOINTS
Pump Cement	05/23/2012 08:31		2	97			905.0	250 SKS VARICEM MIXED AT 12 PPG USING RIG WATER. CEMENT TO SURFACE AT 89 BBLs OUT OF 98 BBLs TOTAL CEMENT. APPROX 10 BBLs BACK TO SURFACE
Pump Displacement	05/23/2012 09:25		2	1			1200.0	DISPLACE 1 BBL BEHIND CEMENT
End Job	05/23/2012 09:30							

# Production



## Global Event Log

1	Starting Job	06:28:29	2	Start Job	06:54:29	3	Test Lines	06:56:25
4	Pump Spacer 1	06:57:55	5	Pump Spacer 2	07:03:33	6	Pump Spacer 1	07:09:34
7	Pump Cement	07:15:50	8	Pump Displacement	08:04:34	9	Shutdown	08:06:00
10	Pump Lead Cement	08:31:07	11	Pump Displacement	09:22:11	12	End Job	09:23:31
13	Ending Job	09:34:32						

Customer:

Well Description:

Job Date: 23-May-2012

UWI:

Sales Order #: 9535692