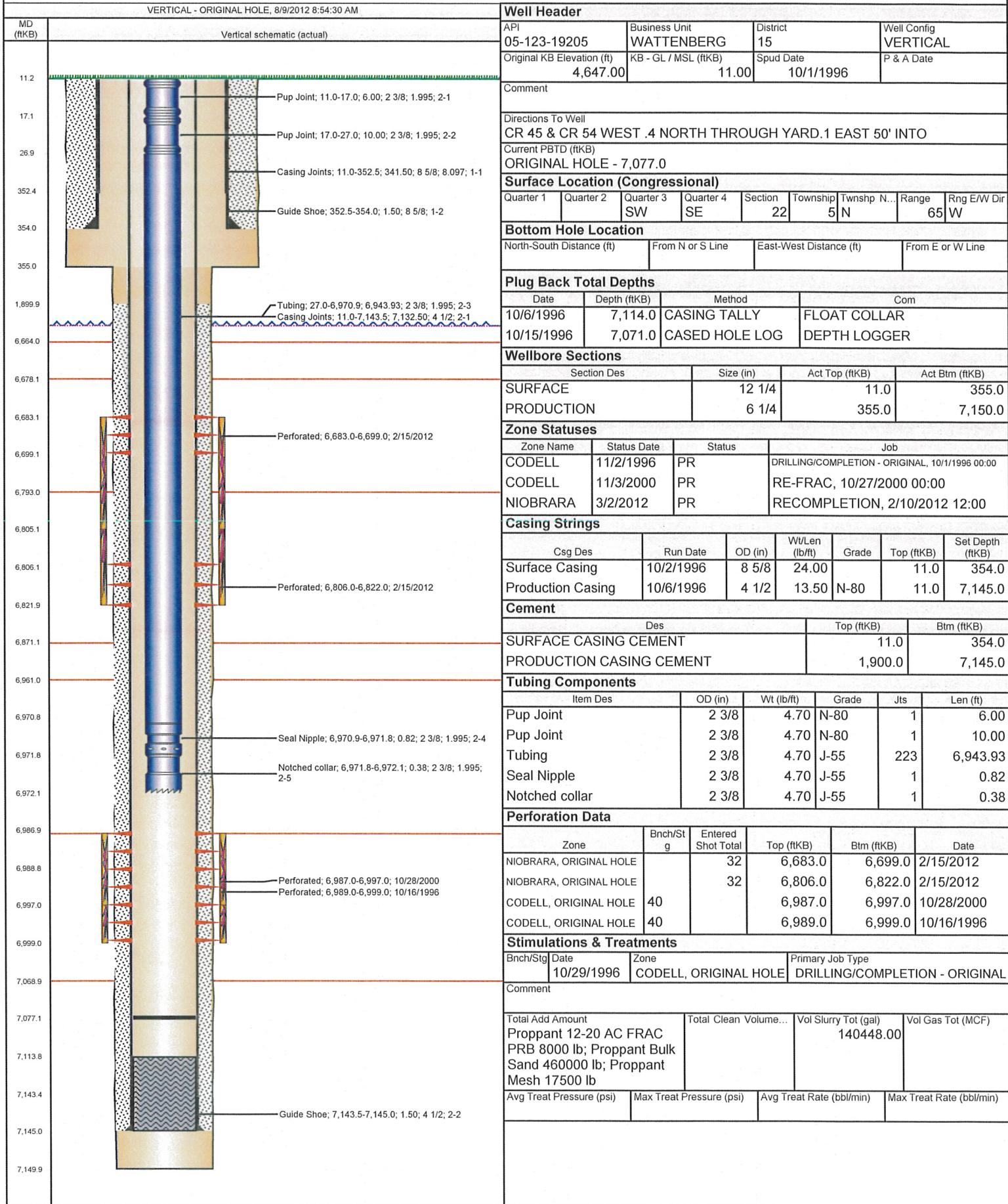


# Frac Wellbore Schematic Report

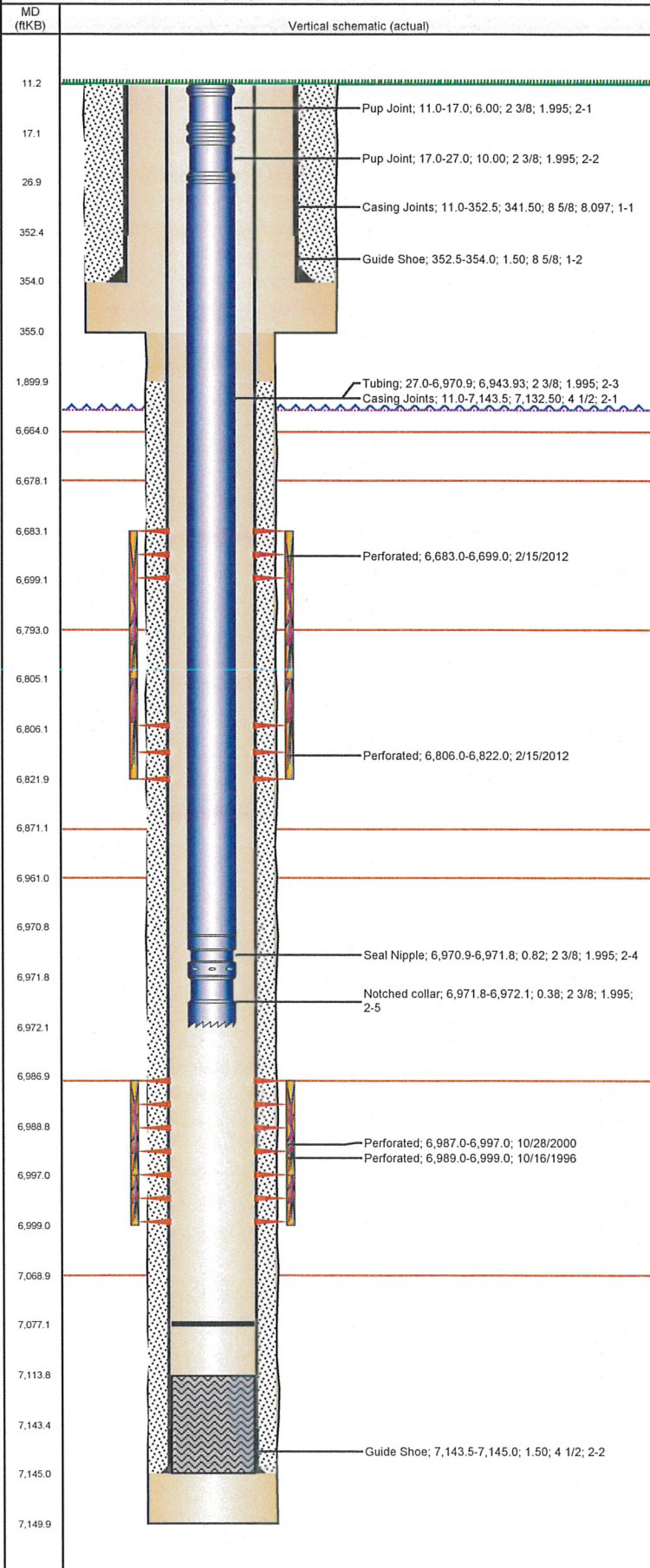
Well Name: LOFLAND 22-43





Well Name: LOFLAND 22-43

VERTICAL - ORIGINAL HOLE, 8/9/2012 8:54:31 AM



Stimulations & Treatments				
Bnch/Stg	Date	Zone	Primary Job Type	
	10/31/2000	CODELL, ORIGINAL HOLE	RE-FRAC	
Comment				
Total Add Amount		Total Clean Volume...	Vol Slurry Tot (gal)	Vol Gas Tot (MCF)
Proppant Bulk Sand 220171			111552.00	
lb				
Avg Treat Pressure (psi)		Max Treat Pressure (psi)	Avg Treat Rate (bbl/min)	Max Treat Rate (bbl/min)
4,785.0		5,540.0	14.30	
Bnch/Stg	Date	Zone	Primary Job Type	
	2/21/2012	NIOBRARA, ORIGINAL HOLE	RECOMPLETION	
Comment				
(NRC): JOB WENT WELL DID NOT GET FULL RATE DUE TO PSI				
Total Add Amount		Total Clean Volume...	Vol Slurry Tot (gal)	Vol Gas Tot (MCF)
Proppant Ottawa		152255.04	163401.42	
245130.203 lb				
Avg Treat Pressure (psi)		Max Treat Pressure (psi)	Avg Treat Rate (bbl/min)	Max Treat Rate (bbl/min)
4,297.0		4,616.0	29.50	31.80
Other In Hole				
Run Date	Des		OD (in)	Top (ftKB) Btm (ftKB)
Logs				
Date	Type		Top (ftKB)	Btm (ftKB)
10/5/1996	COMPENSATED DENSITY		4,150.0	7,138.0
10/5/1996	INDUCTION		396.0	7,140.0
10/15/1996	CEMENT BOND		30.0	7,067.0