

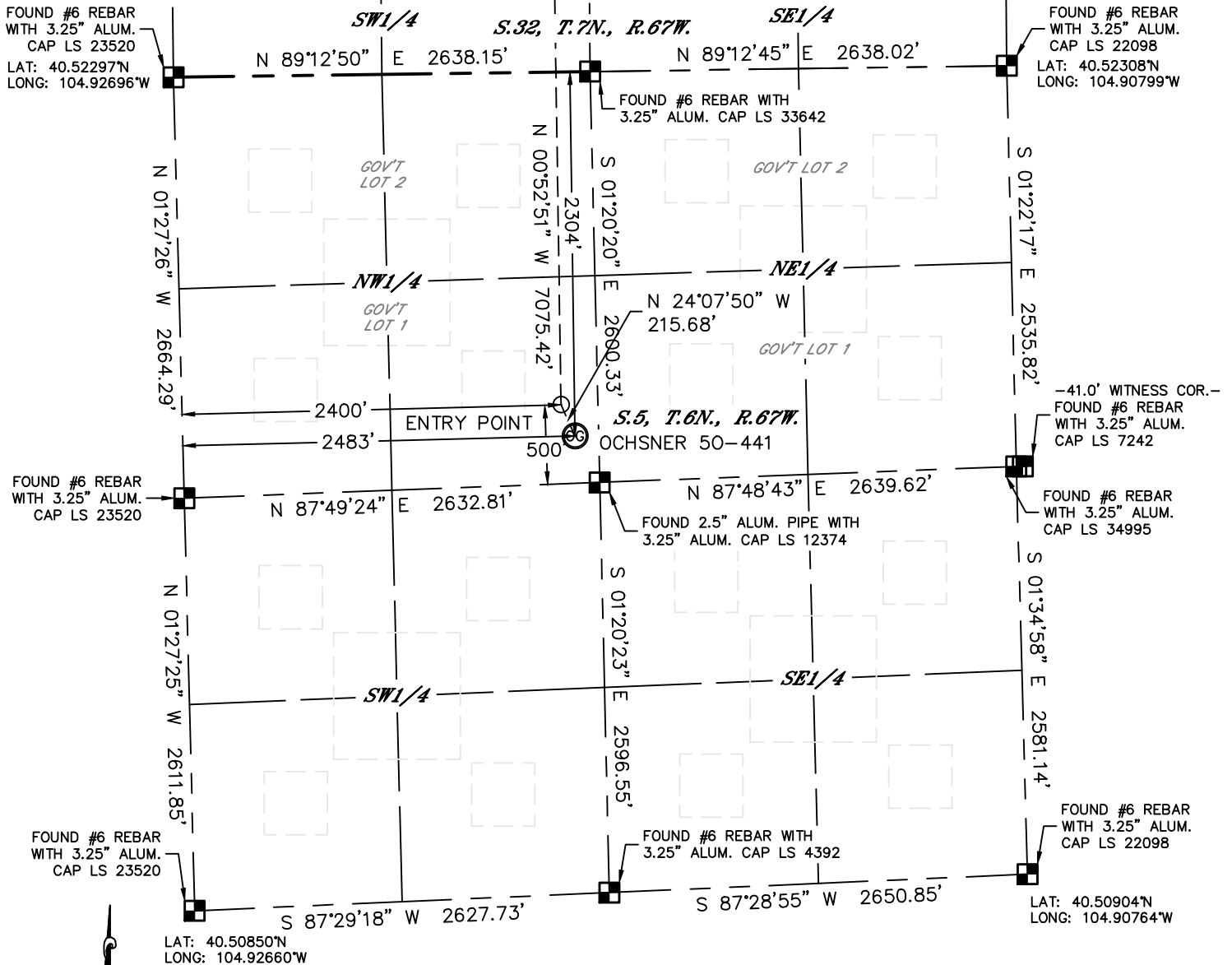


Lat40°, Inc. 1635 Foxtrail Drive, Suite 325 Loveland, CO 970-776-3321

WELL LOCATION CERTIFICATE

THIS MAP DOES  NOT REPRESENT A BOUNDARY SURVEY

SECTION: 5
TOWNSHIP: 6N
RANGE: 67W



In accordance with a request from Al Bragg with PDC ENERGY Lat40°, Inc. has determined the surface location of the OCHSNER 50-441 to be 2304' from the NORTH line and 2483' from the WEST line as measured at right angles from the section lines of Section 5, Township 6 North, Range 67 West and the bottom hole to be 500' from the NORTH line and 2400' from the WEST line as measured at right angles from the section lines of Section 32, Township 7 North, Range 67 West of the Sixth Principal Meridian, County of Weld, State of Colorado.

I hereby state that this Well Location Certificate was prepared by me, or under my direct supervision, that the fieldwork was completed on 5/30/2012, for and on behalf of PDC ENERGY. That this is not a Land Survey Plat or an Improvement Survey Plat, and that it is not to be relied upon for establishment of fence, building, or other future improvement lines.

SURFACE LOCATION

LAT: 40.51670°N
LONG: 104.91788°W
PDOP: 2.4
ELEV: 4884'
1/4,1/4: SE1/4NW1/4 (GOV'T LOT 1)
NEAREST PROPERTY LINE: 150' EAST

ENTRY POINT

LAT: 40.51724°N
LONG: 104.91819°W

BOTTOM HOLE

LAT: 40.53666°N
LONG: 104.91841°W



NOTE:

- 1) Bearings shown are Grid Bearings of the Colorado State Plane Coordinate System, North Zone, North American Datum 1983/2007. The lineal dimensions as contained herein are based upon the "U.S. Survey Foot."
- 2) Ground elevations are based on an observed GPS elevation (NAVD 1988 DATUM).
- 3) IMPROVEMENTS: See LOCATION DRAWING for all visible improvements within 400' of disturbed area.
- 4) SURFACE USE: CROPLAND
- 5) INSTRUMENT OPERATOR: ADAM KELLY

NOTE

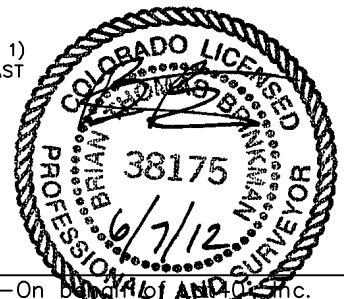
According to Colorado law, you must commence any legal action based upon any defect in this W.L.C. within three years after you discover such defect. In no event, may any action based upon any defect in this survey be commenced more than ten years after the date of the certificate shown hereon. (13-80-105 C.R.S.)

LEGEND

-  = ALIQUOT MONUMENT AS DESCRIBED
 = CALCULATED POSITION

SHEET 1 OF 2

Brian T. Brinkman—On behalf of Lat40°, Inc.
Colorado Licensed Professional Surveyor No. 38175
PROJECT#: 2012002





Lat40°, Inc. 1635 Foxtrail Drive, Suite 325 Loveland, CO 970-776-3321

WELL LOCATION CERTIFICATE

THIS MAP DOES NOT REPRESENT A BOUNDARY SURVEY

SECTION: 5
TOWNSHIP: 6N
RANGE: 67W

LAT: 40.53809°N
LONG: 104.92706°W

FOUND #6 REBAR
WITH 3.25" ALUM.
CAP LS 22098

500'

FOUND #6 REBAR WITH
3.25" ALUM. CAP LS 22098

LAT: 40.53795°N
LONG: 104.90802°W

FOUND #6 REBAR
WITH 3.25" ALUM.
CAP LS 22098

FOUND #6 REBAR
WITH 3.25" ALUM.
CAP LS 7242

FOUND #6 REBAR WITH
3.25" ALUM. CAP LS 33642

FOUND #6 REBAR
WITH 3.25" ALUM.
CAP LS 22098

FOUND #6 REBAR
WITH 3.25" ALUM.
CAP LS 23520

LAT: 40.52297°N
LONG: 104.92696°W

FOUND #6 REBAR WITH
3.25" ALUM. CAP LS 33642

FOUND #6 REBAR
WITH 3.25" ALUM.
CAP LS 22098

LAT: 40.52308°N
LONG: 104.90799°W

N 24°07'50" W
215.68'
ENTRY POINT
OCHSNER 50-441



0 1000
1"=1000'

NOTE

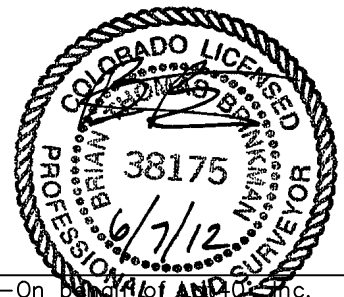
According to Colorado law, you must commence any legal action based upon any defect in this W.L.C. within three years after you discover such defect. In no event, may any action based upon any defect in this survey be commenced more than ten years after the date of the certificate shown hereon. (13-80-105 C.R.S.)

LEGEND

- = ALIQUOT MONUMENT AS DESCRIBED
- = CALCULATED POSITION

SHEET 2 OF 2

Brian T. Brinkman—On behalf of Lat40°, Inc.
Colorado Licensed Professional Land Surveyor No. 38175
DATE: 6/7/2012
PROJECT#: 2012002



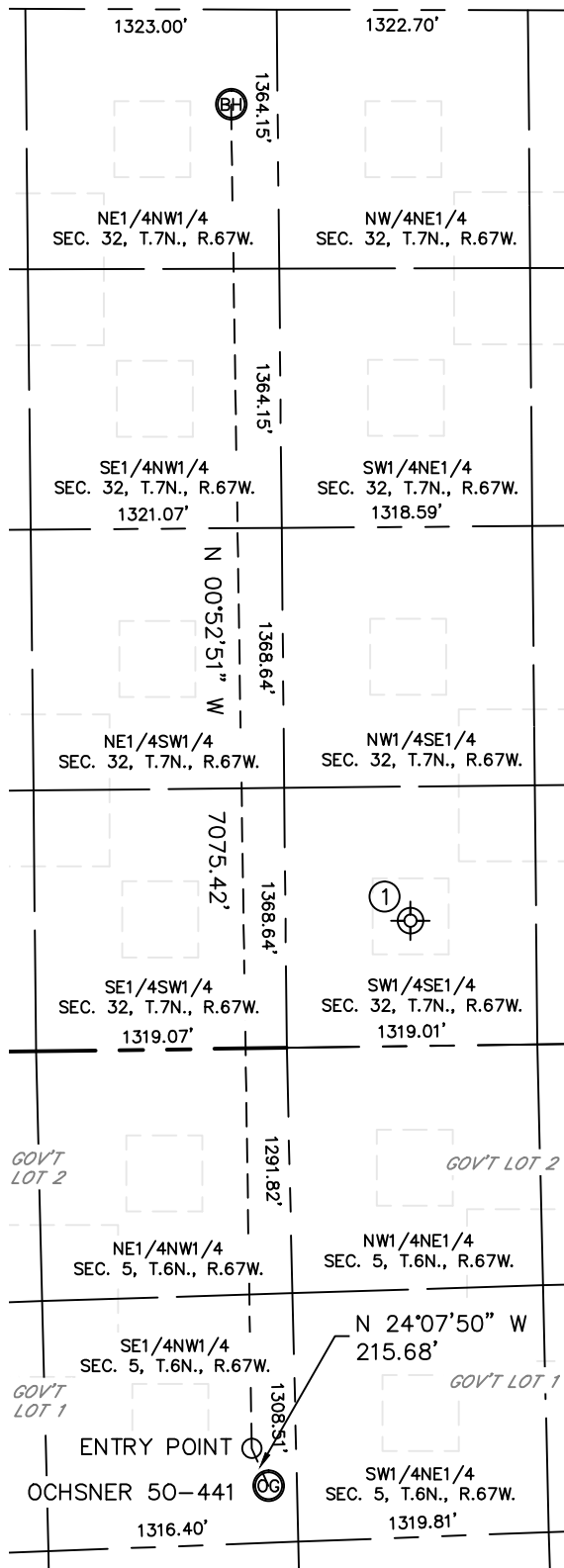


Lat40°, Inc. 1635 Foxtrail Drive, Suite 325 Loveland, CO 970-776-3321

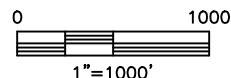
SITE SKETCH

OCHSNER 50-441

SECTION: 5
TOWNSHIP: 6N
RANGE: 67W



- ①
EHRlich 1
(Drilled and Abandoned)
SW1/4SE1/4
660' FSL (COGCC)
1980' FEL (COGCC)
LAT-40.52475°N (COGCC)
LONG-104.91521°W (COGCC)
PDOP: N/A
ELEV: 4932' (COGCC)



DATE: 6/7/2012
PROJECT#: 2012002