

T6N, R92W, 6th P.M.

QUICKSILVER RESOURCES, INC.

Set Marked Stone
Lat: 40.492581°
Long: 107.696403°

N89°56'37"W - 5285.38' (Meas.)

Set Marked Stone
Lat: 40.492544°
Long: 107.677406°

Well location, WELKER #42-11, located as shown in the SE 1/4 NE 1/4 of Section 11, T6N, R92W, 6th P.M., Moffat County, Colorado.

BASIS OF ELEVATION

SPOT ELEVATION LOCATED AT THE NORTHEAST CORNER OF SECTION 10, T6N, R93W, 6th, P.M., TAKEN FROM THE HORSE GULCH QUADRANGLE, COLORADO, MOFFAT COUNTY, 7.5 MINUTE QUAD. (TOPOGRAPHIC MAP) PUBLISHED BY THE UNITED STATES DEPARTMENT OF THE INTERIOR, GEOLOGICAL SURVEY. SAID ELEVATION IS MARKED AS BEING 6246 FEET.

BASIS OF BEARINGS

BASIS OF BEARINGS IS A G.P.S. OBSERVATION.

N00°02'09"W - 5288.24' (Meas.)

NOTE:
SEE ADDENDUM TO LEGAL PLAT FOR
EXISTING IMPROVEMENTS WITHIN 400'
OF THE PROPOSED DISTURBANCE.

WELKER #42-11
Elev. Ungraded Ground = 6597'

11

Lease Line

600' Buffer Line

Set Marked Stone
Lat: 40.478069°
Long: 107.696414°

N89°59'22"W - 5285.15' (Meas.)

N00°02'00"W - 5284.02' (Meas.)

2 1/2" UELS Alum.
Cap 0.2" Below Grade
Lat: 40.478044°
Long: 107.677422°

LEGEND:

└ = 90° SYMBOL

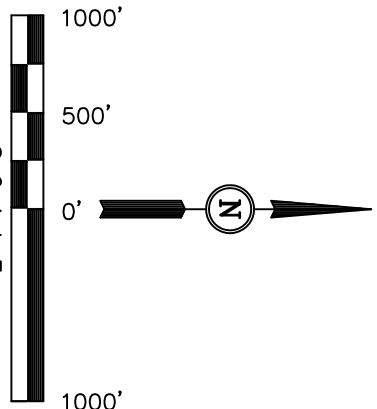
● = PROPOSED WELL HEAD.

▲ = SECTION CORNERS LOCATED.

NAD 83 (SURFACE LOCATION)	
LATITUDE =	40°29'13.60" (40.487111)
LONGITUDE =	107°40'47.23" (107.679786)
NAD 27 (SURFACE LOCATION)	
LATITUDE =	40°29'13.70" (40.487139)
LONGITUDE =	107°40'44.98" (107.679161)

STATE PLANE NAD 83	
N: 1427746.76	E: 2393748.15
STATE PLANE NAD 27	
N: 427745.70	E: 1393906.04

PDOP = 1.1



CERTIFICATE

THIS IS TO CERTIFY THAT THE ABOVE PLAT WAS PREPARED FROM FIELD NOTES OF ACTUAL SURVEYS MADE BY ME OR UNDER MY SUPERVISION AND THAT THE SAME ARE TRUE AND CORRECT TO THE BEST OF MY KNOWLEDGE AND BELIEF.

REVISED: 07-18-12
REVISED: 07-11-12

REGISTERED LAND SURVEYOR
REGISTRATION NO. 12492
STATE OF COLORADO
07-18-12

UINTAH ENGINEERING & LAND SURVEYING
85 SOUTH 200 EAST - VERNAL, UTAH 84078
(435) 789-1017

SCALE	DATE SURVEYED:	DATE DRAWN:
1" = 1000'	05-15-12	05-16-12
PARTY	REFERENCES	
G.M. C.B. J.W.	G.L.O. PLAT	
WEATHER	FILE	
COOL	QUICKSILVER RESOURCES, INC.	



QUICKSILVER RESOURCES, INC.

ADDENDUM TO LEGAL PLAT FOR

WELKER #42-11

SECTION 11, T6N, R92W, 6th P.M.

1982' FNL 661' FEL

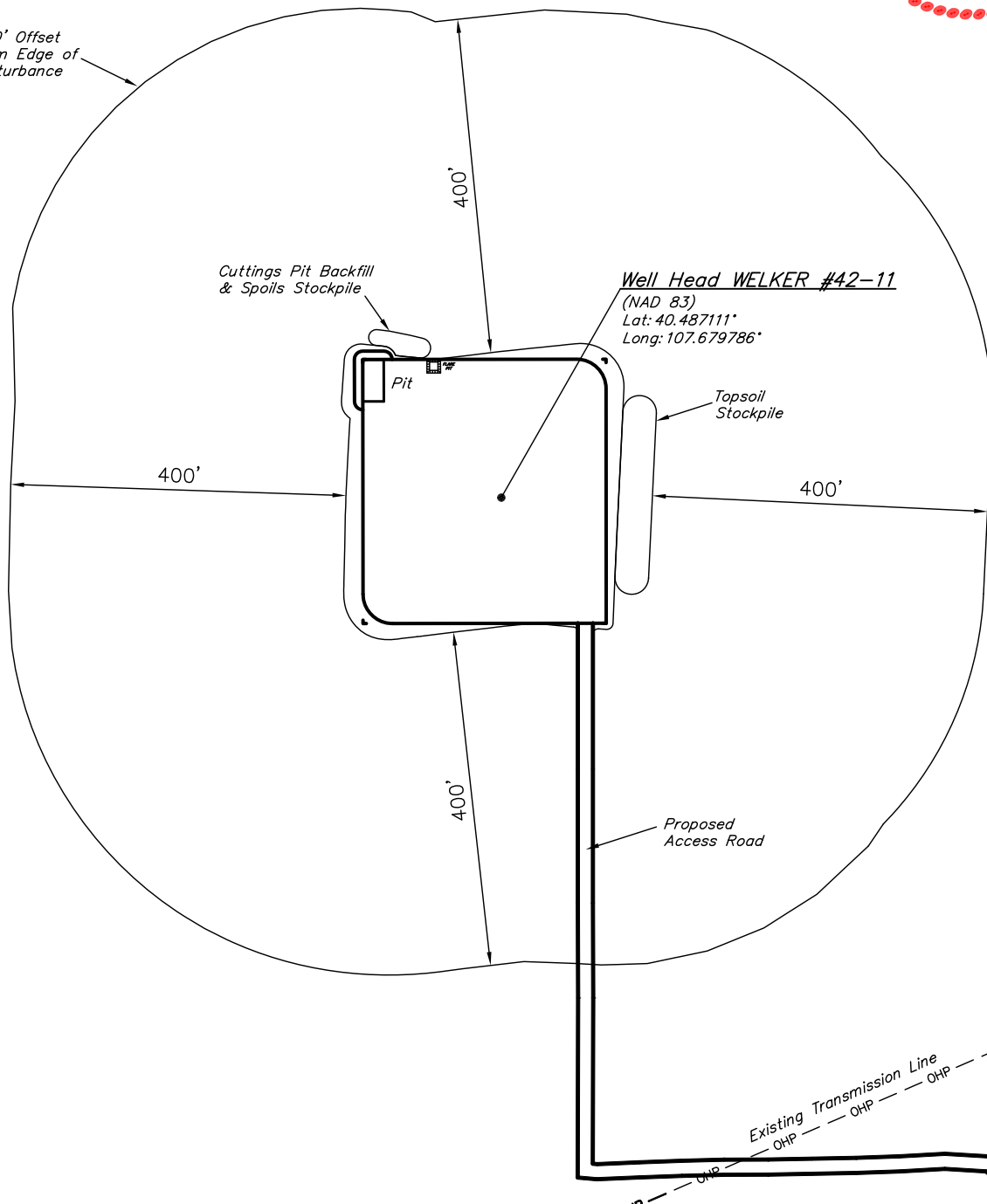
SCALE: 1" = 200'

DATE: 05-16-12

DRAWN BY: J.W.



400' Offset
from Edge of
Disturbance



UINTAH ENGINEERING & LAND SURVEYING
85 So. 200 East * Vernal, Utah 84078 * (435) 789-1017