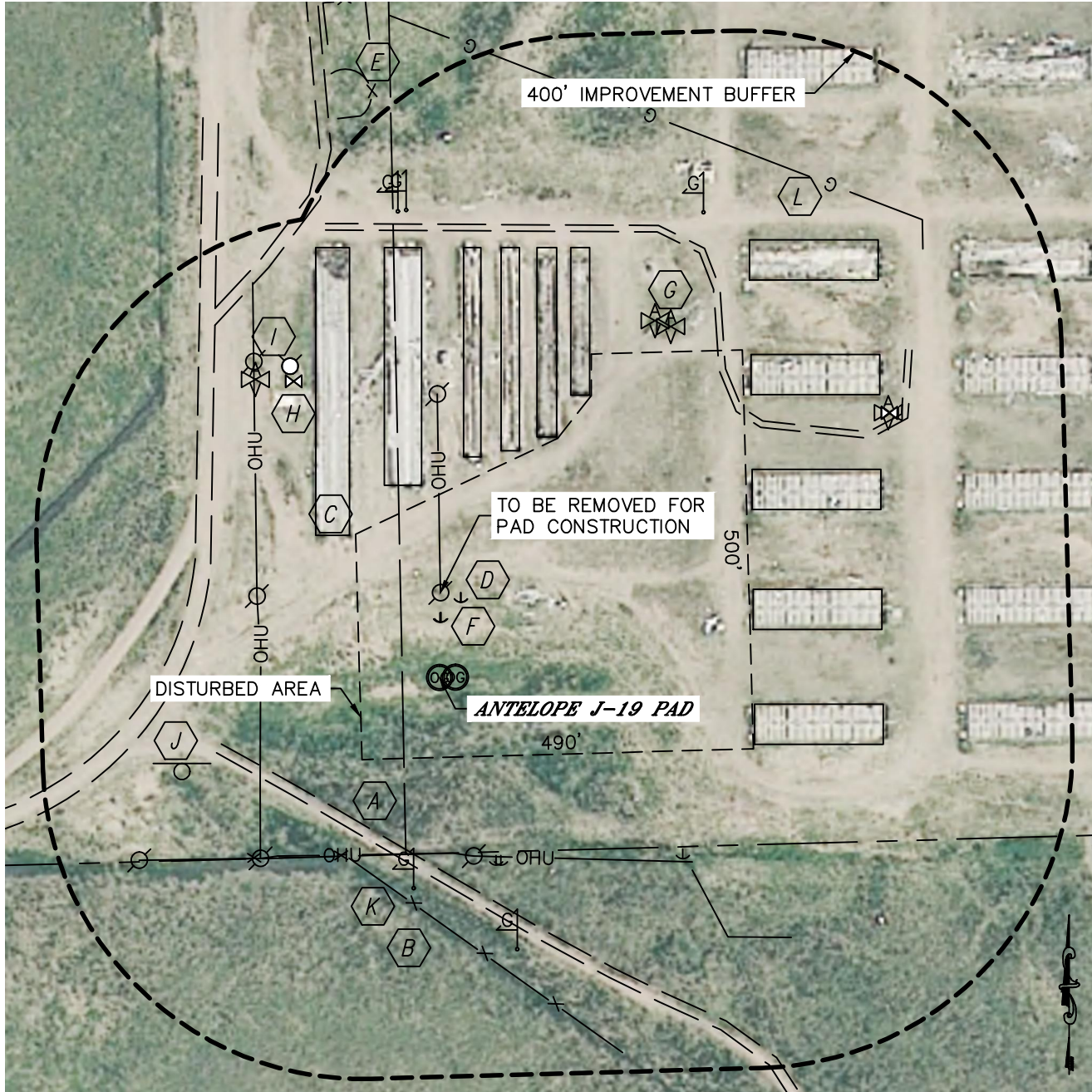




# LOCATION DRAWING

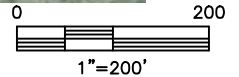
ANTELOPE J-19 PAD

SECTION: 19  
TOWNSHIP: 5N  
RANGE: 62W



## IMPROVEMENTS:

(MEASURED FROM PROPOSED ANTELOPE J-F-19HZ WELL LOCATION)



**A** FIELD ROAD 207' SW, 308' W, 510' NE, 560' N

**B** FENCE 253' SW

**C** CONCRETE FOUNDATIONS 211' NW, 242' N, 282' N, 301' NE, 335' NE, 401' NE, 632' NE, 527' NE, 445' NE, 398' E, 396' E

**D** OVERHEAD UTILITY LINE 106' N (ABANDONED), 224' W, 220' S

**E** EX. PRODUCTION EQUIPMENT (BONANZA) 711' NW

**F** GUY WIRE 82' N, 110' N, 234' SE, 236' SE, 374' SE

**G** AIR VALVE 522' NE, 527' NE, 653' NE, 439' NW

**H** WATER VALVE 414' NW, 655' NE

**I** FIRE HYDRANT 433' NW

**J** SIGN 340' W

**K** GAS MARKER 266' S, 352' S, 588' NW, 587' NW, 670' NE

**L** GAS PIPELINE 752' NE

NEAREST: BUILDING 5280'+, PUBLIC ROAD 5280'+,  
ABOVE GROUND UTILITY (106' N ABANDONED) 220' S, RAILROAD 5280'+, PROPERTY LINE 220' S

DATE: rev 7/18/2012  
PROJECT#: 2012071