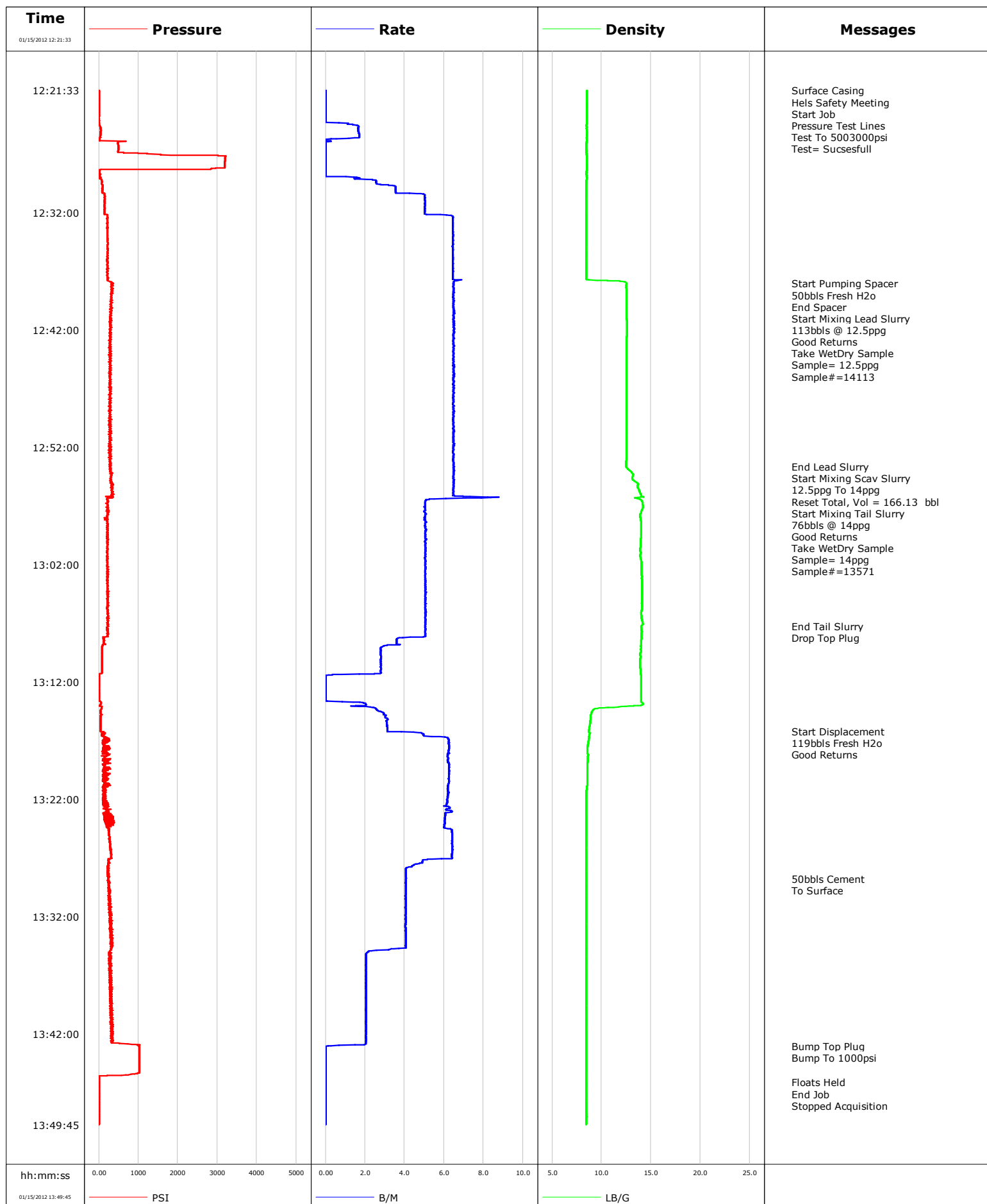


Well	KIMBALL MTN DH5A-32	Client	ENCANA
Field	KIMBALL MTN	SIR No.	BTX1-00013
Engineer		Job Type	SURFACE
Country	United States	Job Date	01-15-2012

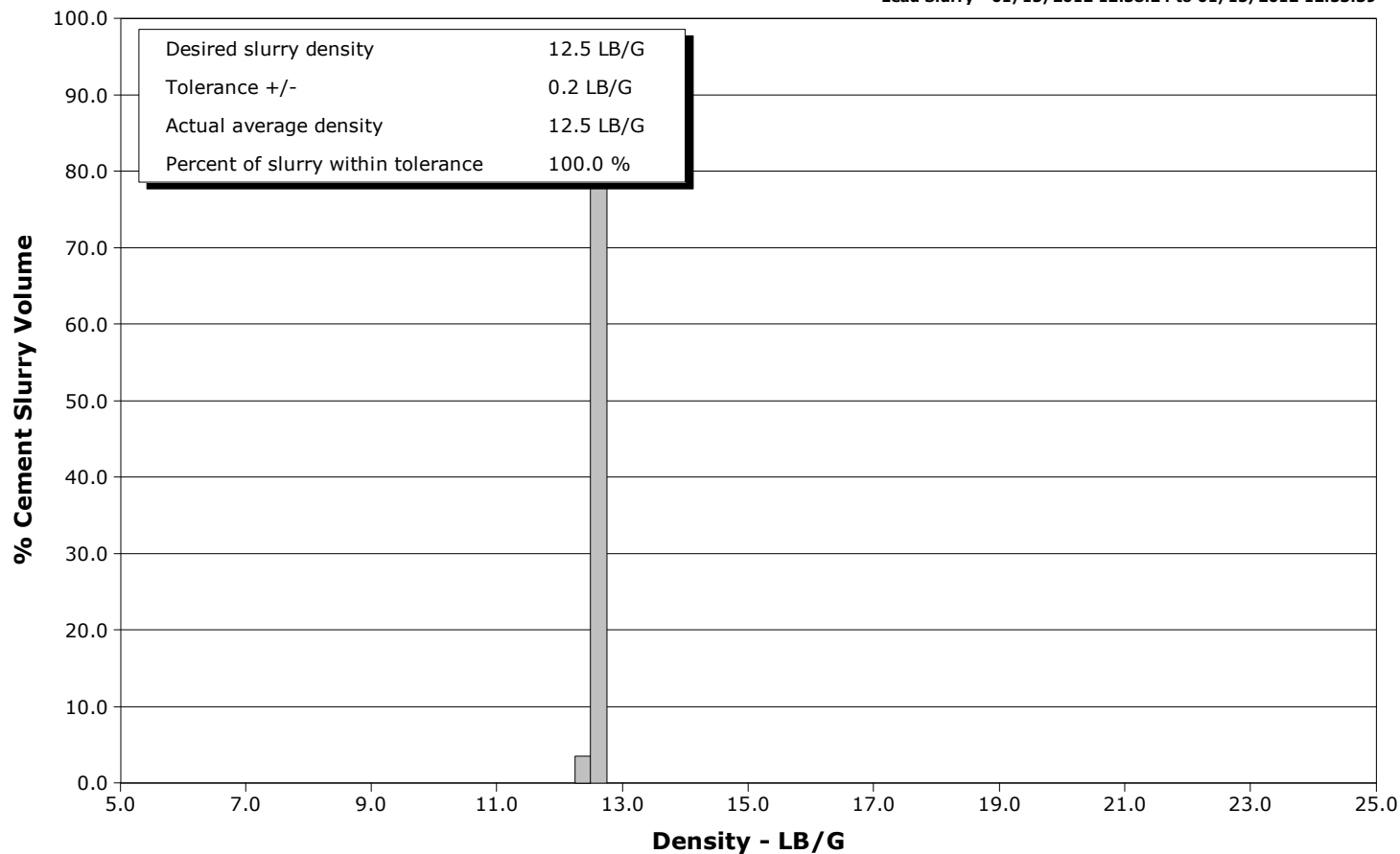


Schlumberger Cementing Qa/Qc Density Report

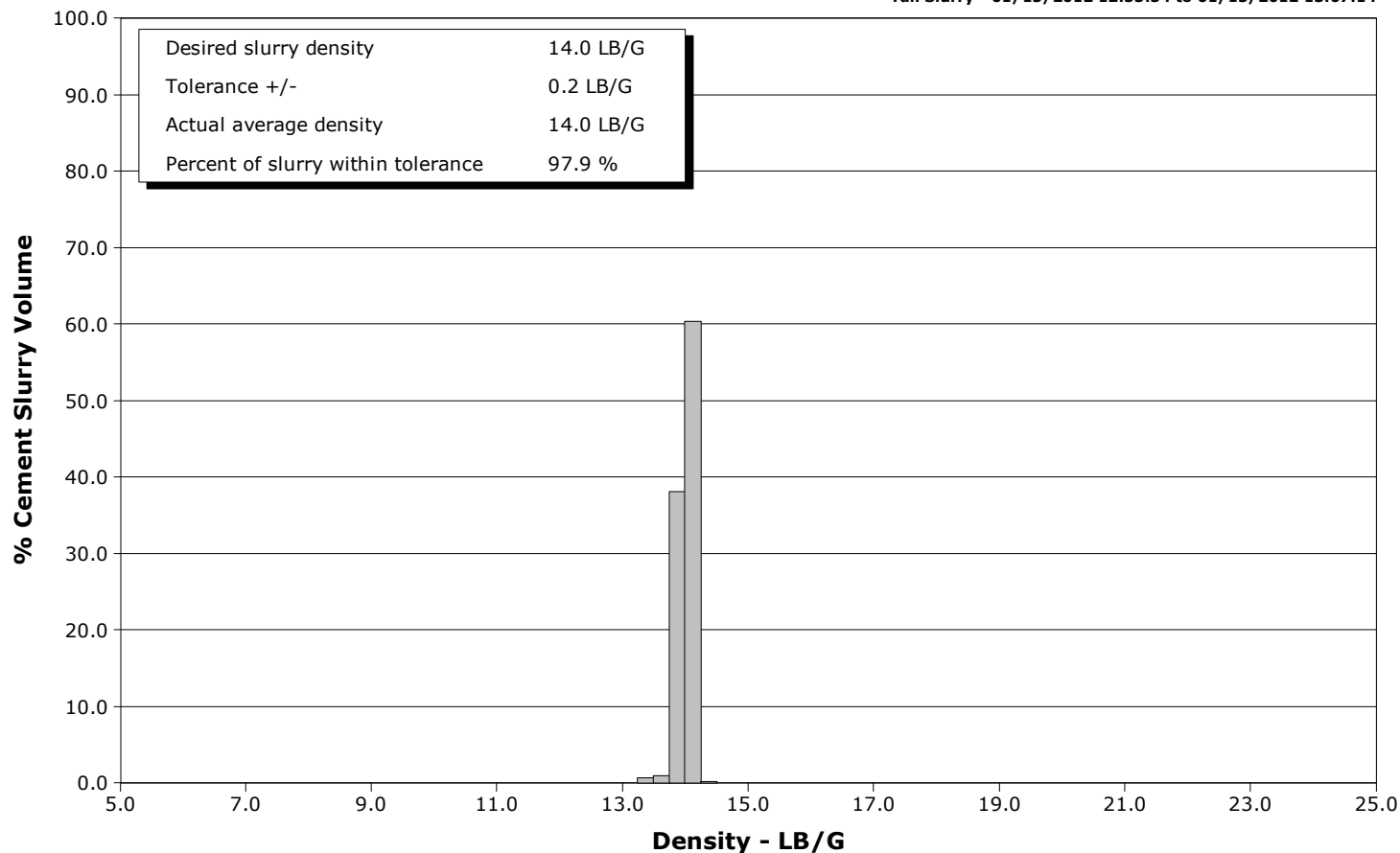
Well KIMBALL MTN DH5A-32
Field KIMBALL MTN
Engineer
Country United States

Client ENCANA
SIR No. BTX1-00013
Job Type SURFACE
Job Date 01-15-2012

Lead Slurry - 01/15/2012 12:38:24 to 01/15/2012 12:53:39



Tail Slurry - 01/15/2012 12:55:54 to 01/15/2012 13:07:14





Cementing Service Report

				Customer ENCANA			Job Number BTX1-00013								
Well KIMBALL MTN DH5A-32			Location (legal) CO			Schlumberger Location GCO			Job Start Jan/15/2012						
Field KIMBALL MTN		Formation Name/Type			Deviation		Bit Size		Well MD		Well TVD				
County GARFIELD		State/Province Colorado			BHP		BHST		BHCT		Pore Press. Gradient				
Well Master		API/UWI													
Rig Name PATTERSON 326		Drilled For Gas		Service Via Land		Casing/Liner									
Offshore Zone		Well Class New		Well Type New Well Completion		Depth, ft		Size, in		Weight, lb/ft		Grade		Thread	
						1261.0		10.750		40.5		J55		BUTT	
Drilling Fluid Type		Max. Density		Plastic Viscosity		Tubing/Drill Pipe									
						Depth,		Size,		Weight,		Grade		Thread	
Service Line Cementing		Job Type SURFACE													
Max. Allowed Tub. Press		Max. Allowed Ann. Press		WH Connection Single Cement head		Perforations/Open Hole									
						Top,		Bottom,				No. of Shots		Total Interval	
Service Instructions 50bbbs water 300sks 12.5ppg lead 2.11ft3/sk 276sks 14ppg tail 1.54ft3/sk														Diameter	
						Treat Down Casing		Displacement 119.0 bbl		Packer Type		Packer Depth			
Tubing Vol.		Casing Vol. 124.0 bbl		Annular Vol. 125.0 bbl		Openhole Vol. 249.0 bbl									
Casing/Tubing Secured <input checked="" type="checkbox"/>		1 Hole Vol. Circulated prior to Cement <input checked="" type="checkbox"/>		Casing Tools				Squeeze Job							
Lift Pressure 563 psi				Shoe Type Guide				Squeeze Type							
Pipe Rotated <input type="checkbox"/>		Pipe Reciprocated <input type="checkbox"/>		Shoe Depth 1261.0 ft				Tool Type							
No. Centralizers		Top Plugs 1		Bottom Plugs		Stage Tool Type				Tool Depth					
Cement Head Type Single				Stage Tool Depth				Tail Pipe Size							
Job Scheduled For Jan/15/2012		Arrived on Location Jan/15/2012		Leave Location Jan/15/2012		Collar Type Diff-Fill				Tail Pipe Depth					
						Collar Depth 1214.0 ft				Sqz. Total Vol.					
Date	Time 24-hr clock	Treating Pressure PSI	Flow Rate B/M	Density LB/G	Volume BBL	Message									
01/15/2012	10:58:39					Started Acquisition									
01/15/2012	12:21:32					Cement 1261' 10 4/4									
01/15/2012	12:21:33					Surface Casing									
01/15/2012	12:21:33					Hels Safety Meeting									
01/15/2012	12:21:33	5	0.0	8.49	0.0										
01/15/2012	12:21:35					Start Job									
01/15/2012	12:21:35	5	0.0	8.49	0.0										
01/15/2012	12:21:37					Pressure Test Lines									
01/15/2012	12:21:37	5	0.0	8.49	0.0										
01/15/2012	12:21:38					Test To 5003000psi									
01/15/2012	12:21:38	5	0.0	8.49	0.0										
01/15/2012	12:21:39					Test= Sucsesfull									
01/15/2012	12:21:39	5	0.0	8.49	0.0										
01/15/2012	12:22:09	4	0.0	8.49	0.0										
01/15/2012	12:22:39	5	0.0	8.49	0.0										
01/15/2012	12:23:09	4	0.0	8.49	0.0										
01/15/2012	12:23:39	0	0.0	8.49	0.0										
01/15/2012	12:24:09	0	0.0	8.49	0.0										
01/15/2012	12:24:39	33	1.7	8.48	0.4										
01/15/2012	12:25:09	44	1.7	8.48	1.3										
01/15/2012	12:25:39	22	1.2	8.48	2.1										

Well			Field		Job Start	Customer		Job Number
KIMBALL MTN DH5A-32			KIMBALL MTN		Jan/15/2012	ENCANA		BTX1-00013
Date	Time 24-hr clock	Treating Pressure PSI	Flow Rate B/M	Density LB/G	Volume BBL	Message		
01/15/2012	12:26:39	491	0.0	8.48	2.2			
01/15/2012	12:27:09	3212	0.0	8.48	2.2			
01/15/2012	12:27:39	3186	0.0	8.48	2.2			
01/15/2012	12:28:09	3175	0.0	8.48	2.2			
01/15/2012	12:28:39	17	0.0	8.48	2.2			
01/15/2012	12:29:09	54	1.7	8.48	2.5			
01/15/2012	12:29:39	87	3.2	8.48	3.8			
01/15/2012	12:30:09	84	3.5	8.48	5.6			
01/15/2012	12:30:39	143	5.0	8.48	7.8			
01/15/2012	12:31:09	147	5.0	8.48	10.3			
01/15/2012	12:31:39	147	5.0	8.48	12.8			
01/15/2012	12:32:09	208	5.1	8.48	15.3			
01/15/2012	12:32:39	230	6.4	8.48	18.5			
01/15/2012	12:33:09	212	6.4	8.48	21.7			
01/15/2012	12:33:39	222	6.5	8.47	24.9			
01/15/2012	12:34:09	211	6.4	8.47	28.2			
01/15/2012	12:34:39	223	6.4	8.47	31.4			
01/15/2012	12:35:09	225	6.5	8.47	34.6			
01/15/2012	12:35:39	212	6.4	8.47	37.8			
01/15/2012	12:36:09	231	6.4	8.47	41.0			
01/15/2012	12:36:39	223	6.4	8.47	44.3			
01/15/2012	12:37:09	219	6.4	8.47	47.5			
01/15/2012	12:37:39	229	6.4	8.47	50.7			
01/15/2012	12:38:01					Start Pumping Spacer		
01/15/2012	12:38:01	320	6.5	12.51	53.1			
01/15/2012	12:38:03					50bbls Fresh H2o		
01/15/2012	12:38:03	371	6.5	12.51	53.3			
01/15/2012	12:38:09	316	6.5	12.50	54.0			
01/15/2012	12:38:17					End Spacer		
01/15/2012	12:38:17	339	6.5	12.50	54.8			
01/15/2012	12:38:24					Start Mixing Lead Slurry		
01/15/2012	12:38:24	322	6.5	12.50	55.6			
01/15/2012	12:38:26					113bbls @ 12.5ppg		
01/15/2012	12:38:26	352	6.5	12.50	55.8			
01/15/2012	12:38:27					Good Returns		
01/15/2012	12:38:27					Take WetDry Sample		
01/15/2012	12:38:27					Sample= 12.5ppg		
01/15/2012	12:38:27					Sample#=14113		
01/15/2012	12:38:27	320	6.5	12.51	55.9			
01/15/2012	12:38:39	332	6.5	12.51	57.2			
01/15/2012	12:39:09	312	6.5	12.51	60.4			
01/15/2012	12:39:39	306	6.5	12.53	63.7			
01/15/2012	12:40:09	299	6.5	12.54	66.9			
01/15/2012	12:40:39	289	6.5	12.55	70.2			
01/15/2012	12:41:09	323	6.5	12.55	73.4			
01/15/2012	12:41:39	283	6.5	12.56	76.6			
01/15/2012	12:42:09	289	6.5	12.55	79.9			
01/15/2012	12:42:39	271	6.5	12.54	83.1			
01/15/2012	12:43:09	292	6.5	12.54	86.4			
01/15/2012	12:43:39	279	6.5	12.53	89.6			
01/15/2012	12:44:09	269	6.5	12.53	92.8			
01/15/2012	12:44:39	287	6.5	12.53	96.1			
01/15/2012	12:45:09	276	6.5	12.53	99.3			
01/15/2012	12:45:39	299	6.5	12.53	102.6			

Well			Field		Job Start		Customer		Job Number	
KIMBALL MTN DH5A-32			KIMBALL MTN		Jan/15/2012		ENCANA		BTX1-00013	
Date	Time 24-hr clock	Treating Pressure PSI	Flow Rate B/M	Density LB/G	Volume BBL	Message				
01/15/2012	12:46:39	304	6.4	12.52	109.0					
01/15/2012	12:47:09	274	6.5	12.52	112.3					
01/15/2012	12:47:39	286	6.5	12.52	115.5					
01/15/2012	12:48:09	286	6.5	12.51	118.8					
01/15/2012	12:48:39	291	6.5	12.51	122.0					
01/15/2012	12:49:09	259	6.5	12.51	125.2					
01/15/2012	12:49:39	320	6.4	12.51	128.5					
01/15/2012	12:50:09	274	6.5	12.51	131.7					
01/15/2012	12:50:39	327	6.5	12.51	134.9					
01/15/2012	12:51:09	296	6.5	12.51	138.2					
01/15/2012	12:51:39	262	6.5	12.51	141.4					
01/15/2012	12:52:09	279	6.5	12.51	144.7					
01/15/2012	12:52:39	259	6.5	12.51	147.9					
01/15/2012	12:53:09	287	6.5	12.49	151.1					
01/15/2012	12:53:39					End Lead Slurry				
01/15/2012	12:53:39	264	6.5	12.49	154.4					
01/15/2012	12:53:42					Start Mixing Scav Slurry				
01/15/2012	12:53:42	279	6.5	12.51	154.7					
01/15/2012	12:53:43					12.5ppg To 14ppg				
01/15/2012	12:53:43	275	6.5	12.51	154.8					
01/15/2012	12:54:09	302	6.5	13.05	157.6					
01/15/2012	12:54:39	299	6.5	13.12	160.8					
01/15/2012	12:55:09	353	6.5	13.70	164.1					
01/15/2012	12:55:28					Reset Total, Vol = 166.13 bbl				
01/15/2012	12:55:28	314	6.5	13.68	166.1					
01/15/2012	12:55:39	324	6.5	13.79	167.3					
01/15/2012	12:55:54					Start Mixing Tail Slurry				
01/15/2012	12:55:54	326	6.5	13.92	168.9					
01/15/2012	12:55:55					76bbbls @ 14ppg				
01/15/2012	12:55:55	349	6.5	13.92	169.0					
01/15/2012	12:55:56					Good Returns				
01/15/2012	12:55:56					Take WetDry Sample				
01/15/2012	12:55:56					Sample= 14ppg				
01/15/2012	12:55:56					Sample#=13571				
01/15/2012	12:55:56	349	6.5	13.93	169.2					
01/15/2012	12:56:09	345	6.5	13.99	170.6					
01/15/2012	12:56:39	218	5.1	14.11	173.7					
01/15/2012	12:57:09	252	5.0	14.18	176.2					
01/15/2012	12:57:39	221	5.1	13.95	178.7					
01/15/2012	12:58:09	235	5.0	13.95	181.2					
01/15/2012	12:58:39	231	5.0	13.99	183.8					
01/15/2012	12:59:09	216	5.0	13.99	186.3					
01/15/2012	12:59:39	208	5.1	13.99	188.8					
01/15/2012	13:00:09	208	5.1	13.96	191.3					
01/15/2012	13:00:39	221	5.1	13.89	193.9					
01/15/2012	13:01:09	214	5.1	13.92	196.4					
01/15/2012	13:01:39	215	5.1	14.01	198.9					
01/15/2012	13:02:09	218	5.1	14.06	201.5					
01/15/2012	13:02:39	209	5.0	14.06	204.0					
01/15/2012	13:03:09	209	5.0	14.07	206.5					
01/15/2012	13:03:39	213	5.0	14.08	209.0					
01/15/2012	13:04:09	214	5.1	14.09	211.6					
01/15/2012	13:04:39	239	5.0	14.09	214.1					
01/15/2012	13:05:09	232	5.1	14.08	216.6					

Well			Field		Job Start	Customer		Job Number
KIMBALL MTN DH5A-32			KIMBALL MTN		Jan/15/2012	ENCANA		BTX1-00013
Date	Time 24-hr clock	Treating Pressure PSI	Flow Rate B/M	Density LB/G	Volume BBL	Message		
01/15/2012	13:06:09	210	5.0	14.00	221.7			
01/15/2012	13:06:39	214	5.1	14.07	224.2			
01/15/2012	13:07:09	211	5.1	14.13	226.7			
01/15/2012	13:07:14					End Tail Slurry		
01/15/2012	13:07:14	226	5.0	14.06	227.1			
01/15/2012	13:07:22					Drop Top Plug		
01/15/2012	13:07:22	209	5.0	14.02	227.8			
01/15/2012	13:07:39	227	5.1	14.06	229.3			
01/15/2012	13:08:09	227	5.0	14.04	231.8			
01/15/2012	13:08:39	134	3.6	14.00	233.7			
01/15/2012	13:09:09	79	2.8	13.98	235.3			
01/15/2012	13:09:39	83	2.8	13.90	236.7			
01/15/2012	13:10:09	84	2.8	13.91	238.1			
01/15/2012	13:10:39	84	2.8	13.92	239.4			
01/15/2012	13:11:09	83	2.8	13.93	240.8			
01/15/2012	13:11:39	8	0.0	14.00	241.4			
01/15/2012	13:12:09	9	0.0	14.00	241.4			
01/15/2012	13:12:39	9	0.0	14.00	241.4			
01/15/2012	13:13:09	5	0.0	13.99	241.4			
01/15/2012	13:13:39	7	0.1	14.00	241.4			
01/15/2012	13:14:09	71	2.3	11.68	242.3			
01/15/2012	13:14:39	47	2.9	8.99	243.6			
01/15/2012	13:15:09	44	3.2	8.89	245.1			
01/15/2012	13:15:39	42	3.1	8.81	246.7			
01/15/2012	13:16:09	44	3.1	8.72	248.2			
01/15/2012	13:16:12					Start Displacement		
01/15/2012	13:16:12	44	3.1	8.71	248.4			
01/15/2012	13:16:13					119bbls Fresh H2o		
01/15/2012	13:16:13					Good Returns		
01/15/2012	13:16:13	44	3.1	8.71	248.4			
01/15/2012	13:16:39	169	5.4	8.72	250.5			
01/15/2012	13:17:09	95	6.2	8.64	253.5			
01/15/2012	13:17:39	282	6.2	8.57	256.7			
01/15/2012	13:18:09	86	6.2	8.62	259.8			
01/15/2012	13:18:39	260	6.2	8.61	262.9			
01/15/2012	13:19:09	121	6.2	8.56	266.0			
01/15/2012	13:19:39	94	6.2	8.56	269.1			
01/15/2012	13:20:09	216	6.2	8.56	272.2			
01/15/2012	13:20:39	158	6.2	8.55	275.3			
01/15/2012	13:21:09	162	6.2	8.51	278.4			
01/15/2012	13:21:39	165	6.2	8.47	281.5			
01/15/2012	13:22:09	193	6.2	8.47	284.6			
01/15/2012	13:22:39	253	6.2	8.47	287.7			
01/15/2012	13:23:09	254	6.1	8.47	290.8			
01/15/2012	13:23:39	134	6.0	8.47	293.9			
01/15/2012	13:24:09	340	6.0	8.47	296.9			
01/15/2012	13:24:39	241	6.4	8.47	299.9			
01/15/2012	13:25:09	280	6.4	8.47	303.1			
01/15/2012	13:25:39	297	6.4	8.47	306.3			
01/15/2012	13:26:09	276	6.4	8.47	309.6			
01/15/2012	13:26:39	298	6.4	8.47	312.8			
01/15/2012	13:27:09	249	5.2	8.47	315.9			
01/15/2012	13:27:39	225	4.4	8.47	318.3			
01/15/2012	13:28:09	213	4.1	8.47	320.4			

Well			Field		Job Start	Customer	Job Number
KIMBALL MTN DH5A-32			KIMBALL MTN		Jan/15/2012	ENCANA	BTX1-00013
Date	Time 24-hr clock	Treating Pressure PSI	Flow Rate B/M	Density LB/G	Volume BBL	Message	
01/15/2012	13:28:47					50bbls Cement	
01/15/2012	13:28:47					To Surface	
01/15/2012	13:28:47	231	4.1	8.47	322.9		
01/15/2012	13:29:09	226	4.1	8.47	324.4		
01/15/2012	13:29:39	261	4.1	8.47	326.4		
01/15/2012	13:30:09	266	4.0	8.47	328.5		
01/15/2012	13:30:39	303	4.0	8.47	330.5		
01/15/2012	13:31:09	286	4.1	8.47	332.5		
01/15/2012	13:31:39	282	4.1	8.47	334.5		
01/15/2012	13:32:09	324	4.0	8.47	336.6		
01/15/2012	13:32:39	306	4.0	8.47	338.6		
01/15/2012	13:33:09	313	4.1	8.47	340.6		
01/15/2012	13:33:39	334	4.0	8.47	342.6		
01/15/2012	13:34:09	322	4.0	8.47	344.7		
01/15/2012	13:34:39	325	4.1	8.47	346.7		
01/15/2012	13:35:09	262	2.1	8.47	348.1		
01/15/2012	13:35:39	308	2.0	8.47	349.1		
01/15/2012	13:36:09	302	2.0	8.47	350.1		
01/15/2012	13:36:39	259	2.0	8.47	351.2		
01/15/2012	13:37:09	308	2.0	8.48	352.2		
01/15/2012	13:37:39	265	2.0	8.48	353.2		
01/15/2012	13:38:09	292	2.0	8.48	354.2		
01/15/2012	13:38:39	324	2.0	8.48	355.2		
01/15/2012	13:39:09	327	2.0	8.48	356.3		
01/15/2012	13:39:39	342	2.0	8.48	357.3		
01/15/2012	13:40:09	296	2.0	8.48	358.3		
01/15/2012	13:40:39	348	2.0	8.48	359.3		
01/15/2012	13:41:09	340	2.0	8.48	360.3		
01/15/2012	13:41:39	347	2.0	8.48	361.4		
01/15/2012	13:42:09	305	2.0	8.48	362.4		
01/15/2012	13:42:39	350	2.0	8.48	363.4		
01/15/2012	13:43:01					Bump Top Plug	
01/15/2012	13:43:01	1021	0.3	8.48	364.1		
01/15/2012	13:43:02					Bump To 1000psi	
01/15/2012	13:43:02	1018	0.1	8.48	364.1		
01/15/2012	13:43:09	1026	0.0	8.48	364.1		
01/15/2012	13:43:39	1023	0.0	8.48	364.1		
01/15/2012	13:44:09	1023	0.0	8.48	364.1		
01/15/2012	13:44:39	1023	0.0	8.48	364.1		
01/15/2012	13:45:09	1023	0.0	8.48	364.1		
01/15/2012	13:45:39	10	0.0	8.48	364.1		
01/15/2012	13:46:09					Floats Held	
01/15/2012	13:46:09	9	0.0	8.48	364.1		
01/15/2012	13:46:31					End Job	
01/15/2012	13:46:31	9	0.0	8.48	364.1		
01/15/2012	13:46:39	9	0.0	8.48	364.1		
01/15/2012	13:47:09	10	0.0	8.48	364.1		
01/15/2012	13:47:39	10	0.0	8.48	364.1		
01/15/2012	13:48:09	10	0.0	8.48	364.1		
01/15/2012	13:48:39	10	0.0	8.48	364.1		
01/15/2012	13:49:09	10	0.0	8.48	364.1		
01/15/2012	13:49:39	10	0.0	8.48	364.1		

Well KIMBALL MTN DH5A-32	Field KIMBALL MTN	Job Start Jan/15/2012	Customer ENCANA	Job Number BTX1-00013
------------------------------------	-----------------------------	---------------------------------	---------------------------	---------------------------------

Post Job Summary

Average Pump Rates, bbl/min					Volume of Fluid Injected, bbl			
Slurry 5.0	N2	Mud 0.0	Maximum Rate 8.8	Total Slurry 364.1	Mud 0.0	Spacer 54.8	N2	
Treating Pressure Summary, psi					Breakdown Fluid			
Maximum 3212	Final 9	Average 286	Bump Plug to 1000	Breakdown	Type	Volume	Density	
Avg. N2 Percent		Designed Slurry Volume 188.0 bbl	Displacement 136.3 bbl	Mix Water Temp 68 degF	Cement Circulated to Surface? <input type="checkbox"/>	Volume		
					Washed Thru Perfs <input type="checkbox"/>	To		
Customer or Authorized Representative MORM MCCREARY			Schlumberger Supervisor JASON CRICK			Circulation Lost <input type="checkbox"/>	Job Completed <input type="checkbox"/>	
						-	-	