

HALLIBURTON

WILLIAMS PRODUCTION RMT INC - EBUS

**KP 511-27
MAMM CREEK
Garfield County , Colorado**

Cement Surface Casing

24-Nov-2011

Job Site Documents

The Road to Excellence Starts with Safety

Sold To #: 300721		Ship To #: 2890009		Quote #:		Sales Order #: 9054540	
Customer: WILLIAMS PRODUCTION RMT INC - EBUS				Customer Rep: Duniho, Al			
Well Name: KP		Well #: 511-27		API/UWI #: 05-045-20701			
Field: MAMM CREEK		City (SAP): SILT		County/Parish: Garfield		State: Colorado	
Lat: N 39.506 deg. OR N 39 deg. 30 min. 20.149 secs.				Long: W 107.552 deg. OR W -108 deg. 26 min. 54.431 secs.			
Contractor: CYCLONE 30		Rig/Platform Name/Num: CYCLONE 30					
Job Purpose: Cement Surface Casing							
Well Type: Development Well				Job Type: Cement Surface Casing			
Sales Person: MAYO, MARK		Srv Supervisor: STILLSON, ERIC		MBU ID Emp #: 393789			
Job Personnel							
HES Emp Name	Exp Hrs	Emp #	HES Emp Name	Exp Hrs	Emp #	HES Emp Name	Exp Hrs
HARDRICK, RAYMOND Frank	8	391324	ROMKEE, DALE Alan	8	488215	STILLSON, ERIC W	8
WEAVER, CARLTON Russell	8	457698					
Equipment							
HES Unit #	Distance-1 way	HES Unit #	Distance-1 way	HES Unit #	Distance-1 way	HES Unit #	Distance-1 way
10248057	60 mile	10564022	60 mile	10592964	60 mile	10616651C	60 mile
10744549	60 mile	10951245	60 mile	11808827	60 mile		
Job Hours							
Date	On Location Hours	Operating Hours	Date	On Location Hours	Operating Hours	Date	On Location Hours
11-24-11	8	2					
TOTAL		Total is the sum of each column separately					
Job				Job Times			
Formation Name				Date	Time	Time Zone	
Formation Depth (MD)	Top	Bottom		Called Out	24 - Nov - 2011	10:00	MST
Form Type	BHST			On Location	24 - Nov - 2011	15:00	MST
Job depth MD	1411. ft	Job Depth TVD	1411. ft	Job Started	24 - Nov - 2011	20:13	MST
Water Depth		Wk Ht Above Floor	4. ft	Job Completed	24 - Nov - 2011	21:17	MST
Perforation Depth (MD)	From	To		Departed Loc	24 - Nov - 2011	23:00	MST
Well Data							
Description	New / Used	Max pressure psig	Size in	ID in	Weight lbm/ft	Thread	Grade
Open Hole Section				13.5			
Surface Casing	Unknown		9.625	9.001	32.3		
Sales/Rental/3 rd Party (HES)							
Description	Qty	Qty uom	Depth	Supplier			
PLUG,CMTG,TOP,9 5/8,HWE,8.16 MIN/9.06 MA	1	EA					
Tools and Accessories							
Type	Size	Qty	Make	Depth	Type	Size	Qty
Guide Shoe					Packer		
Float Shoe					Bridge Plug		
Float Collar					Retainer		
Insert Float							
Stage Tool							
Miscellaneous Materials							
Gelling Agt		Conc		Surfactant		Conc	
Treatment Fld		Conc		Inhibitor		Conc	
Acid Type		Qty	Conc	Sand Type		Size	Qty

Fluid Data									
Stage/Plug #: 1									
Fluid #	Stage Type	Fluid Name	Qty	Qty uom	Mixing Density lbm/gal	Yield ft ³ /sk	Mix Fluid Gal/sk	Rate bbl/min	Total Mix Fluid Gal/sk
1	Water Spacer		20.00	bbl	8.34	.0	.0	4	
2	Lead Cement	VERSACEM (TM) SYSTEM (452010)	220.0	sacks	12.3	2.38	13.75	8	13.75
		13.75 Gal FRESH WATER							
3	Tail Cement	VERSACEM (TM) SYSTEM (452010)	160.0	sacks	12.8	2.11	11.75	7	11.75
		11.75 Gal FRESH WATER							
4	Displacement Fluid		106.00	bbl	8.34	.0	.0	10.0	
Calculated Values		Pressures		Volumes					
Displacement	106.7	Shut In: Instant		Lost Returns	0	Cement Slurry	153	Pad	
Top Of Cement	SURFACE	5 Min		Cement Returns	30	Actual Displacement	106	Treatment	
Frac Gradient		15 Min		Spacers	20	Load and Breakdown		Total Job	
Rates									
Circulating	RIG	Mixing	8	Displacement	10	Avg. Job	8		
Cement Left In Pipe	Amount	39.5 ft	Reason	Shoe Joint					
Frac Ring # 1 @	ID	Frac ring # 2 @	ID	Frac Ring # 3 @	ID	Frac Ring # 4 @	ID		
The Information Stated Herein Is Correct				Customer Representative Signature					

The Road to Excellence Starts with Safety

Sold To #: 300721	Ship To #: 2890009	Quote #:	Sales Order #: 9054540
Customer: WILLIAMS PRODUCTION RMT INC - EBUS	Customer Rep: Duniho, Al		
Well Name: KP	Well #: 511-27	API/UWI #: 05-045-20701	
Field: MAMM CREEK	City (SAP): SILT	County/Parish: Garfield	State: Colorado
Legal Description:			
Lat: N 39.506 deg. OR N 39 deg. 30 min. 20.149 secs.		Long: W 107.552 deg. OR W -108 deg. 26 min. 54.431 secs.	
Contractor: CYCLONE 30	Rig/Platform Name/Num: CYCLONE 30		
Job Purpose: Cement Surface Casing	Ticket Amount:		
Well Type: Development Well	Job Type: Cement Surface Casing		
Sales Person: MAYO, MARK	Srv Supervisor: STILLSON, ERIC	MBU ID Emp #: 393789	

Activity Description	Date/Time	Cht #	Rate bbl/min	Volume bbl		Pressure psig		Comments
				Stage	Total	Tubing	Casing	
Call Out	11/24/2011 10:00							9 5/8 SURFACE, WILLIAMS, CYCLONE 30, KP 511-27
Pre-Convoy Safety Meeting	11/24/2011 12:30							ENTIRE CREW, OBSERVE ALL SAFE DRIVING PROCEDURES
Arrive At Loc	11/24/2011 15:00							ARRIVED EARLY. RIG JUST STARTING CASING.
Assessment Of Location Safety Meeting	11/24/2011 17:30							REVIEWED EMERGENCY PLAN, ASSESSED WORK AREA AND SPOTTED EQUIPMENT.
Pre-Rig Up Safety Meeting	11/24/2011 17:55							ENTIRE CREW, WALKED THROUGH RIG UP LOOKING FOR HAZARDS.
Rig-Up Equipment	11/24/2011 18:00							1 PICK UP, 1 HT400 PUMP TRUCK, 1 660 BULK CEMENT TRUCK, 1 BODY LOAD CEMENT TRUCK, 1 BOOSTER PUMP WITH HOSES FOR WATER, 1 QUICK LATCH HEAD WITH PLUG,
Pre-Job Safety Meeting	11/24/2011 19:50							ENTIRE CREW, CO REP AND RIG CREW.

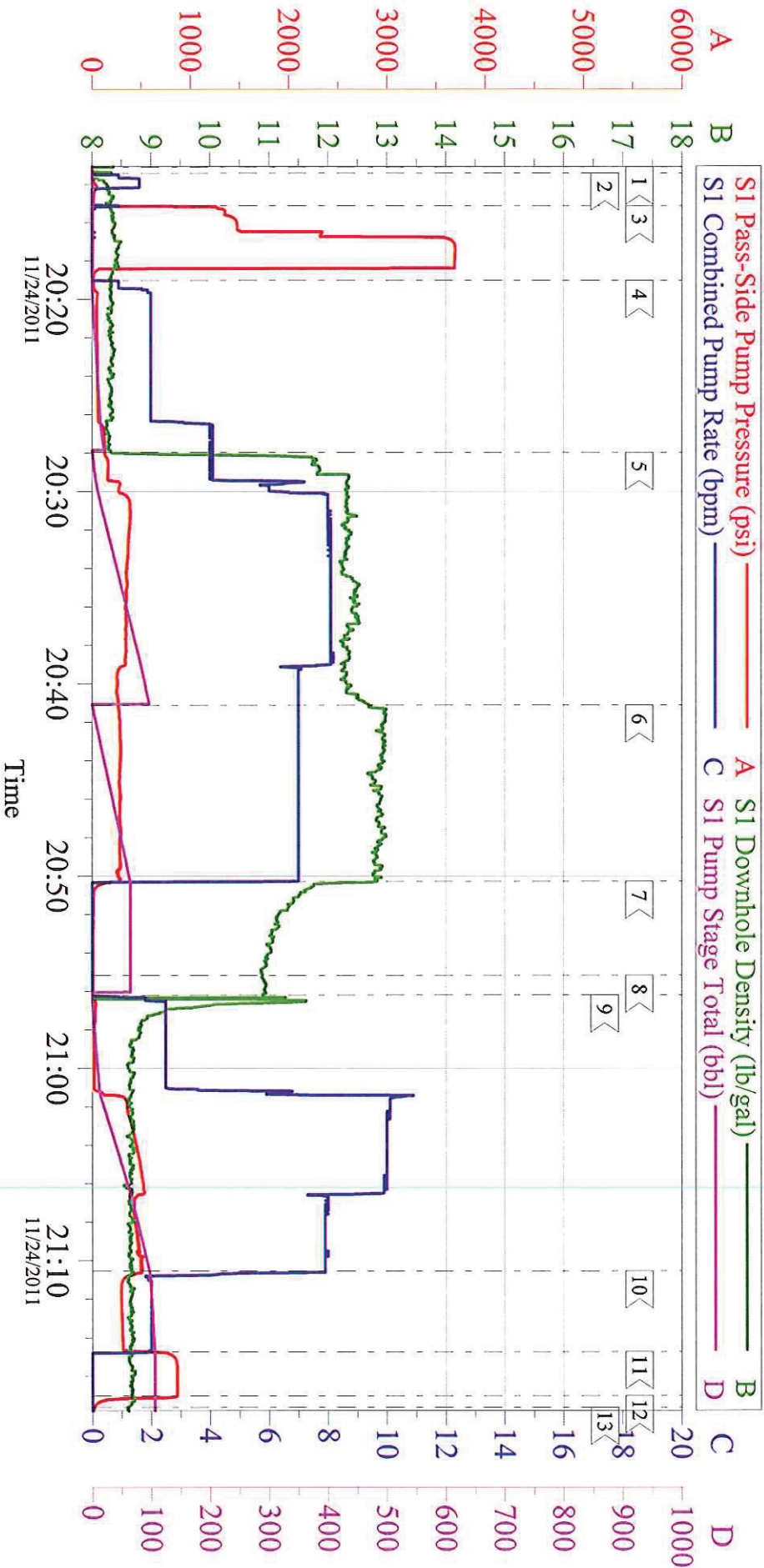
Activity Description	Date/Time	Cht #	Rate bbl/min	Volume bbl		Pressure psig		Comments
				Stage	Total	Tubing	Casing	
Start Job	11/24/2011 20:13							TD 1411 TP 1395 SJ 39.45 FC 1355.55 MW 10.0 PPG, 9 5/8 32.3# CASING IN 13 1/2 HOLE. RIG CIRC APPROX 1 HR, YP 35 ,PV 39,TEMP 93 , NO GAS AT SHUTDOWN.
Pump Water	11/24/2011 20:13		1	1			49.0	FILL LINES BEFORE TESTING
Pressure Test	11/24/2011 20:15		0.5	0.1			3694.0	HELD PRESSURE FOR 2 MIN, PRESSURE HELD, NO LEAKS.
Pump Spacer 1	11/24/2011 20:19		4	20			130.0	FRESH WATER, PUMPED AT 2 BPM UNTIL CEMENT TUB UP TO WEIGHT AND WEIGHED WITH SCALES, SPED RATE TO 4 BPM AT 14 BBLS GONE.
Pump Lead Cement	11/24/2011 20:27		8	93.3			360.0	220 SKS VERSACEM, 12.3 PPG, 2.38 CUFT/SK, 13.75 GAL/SK. SLOWED RATE TO 7 BPM AROUND 80 BBLS GONE TO MAINTAIN DENSITY
Pump Tail Cement	11/24/2011 20:41		7	60.1			288.0	160 SKS VERSACEM, 12.8 PPG, 2.11 CUFT/SK, 11.75 GAL/SK.
Shutdown	11/24/2011 20:50							WASH UP ON PLUG PER CO REP
Drop Top Plug	11/24/2011 20:55							VARIFIED PLUG LEFT CONTAINER.
Pump Displacement	11/24/2011 20:56		10	106.7			520.0	FRESH WATER, SLOWED RATE TO 8 BPM AT 65 BBLS GONE DUR TO CELLAR PUMP, CEMENT TO SURFACE AT 76 BBLS GONE, 30 BBLS OF CEMENT TO SURFACE. USED 100 LBS SUGAR.

Cementing Job Log

Activity Description	Date/Time	Cht #	Rate bbl/min	Volume bbl		Pressure psig		Comments
				Stage	Total	Tubing	Casing	
Slow Rate	11/24/2011 21:10		2	97			310.0	SLOWED RATE TO 2 BPM TO BUMP PLUG.
Bump Plug	11/24/2011 21:14		2	106			862.0	PLUG LANDED AT 310 PSI, BUMPED UP TO 862 PSI AND HELD FOR 3 MIN PER CO REP.
Check Floats	11/24/2011 21:17							FLOATS HELD, WHEN RELEASED PRESSURE GOT 3/4 BBL OF WATER BACK TO TRUCK.
End Job	11/24/2011 21:18							GOOD RETURNS THROUGHOUT, DID NOT RECIPROCATATE PIPE.
Post-Job Safety Meeting (Pre Rig-Down)	11/24/2011 21:20							ENTIRE CREW
Rig-Down Equipment	11/24/2011 21:30							
Pre-Convoy Safety Meeting	11/24/2011 22:50							ENTIRE CREW, OBSERVE ALL SAFE DRIVING PROCEDURES
Crew Leave Location	11/24/2011 23:00							THANK YOU FOR USING HALLIBURTON, ERIC STILLSON AND CREW.

WILLIAMS - KP 511-27

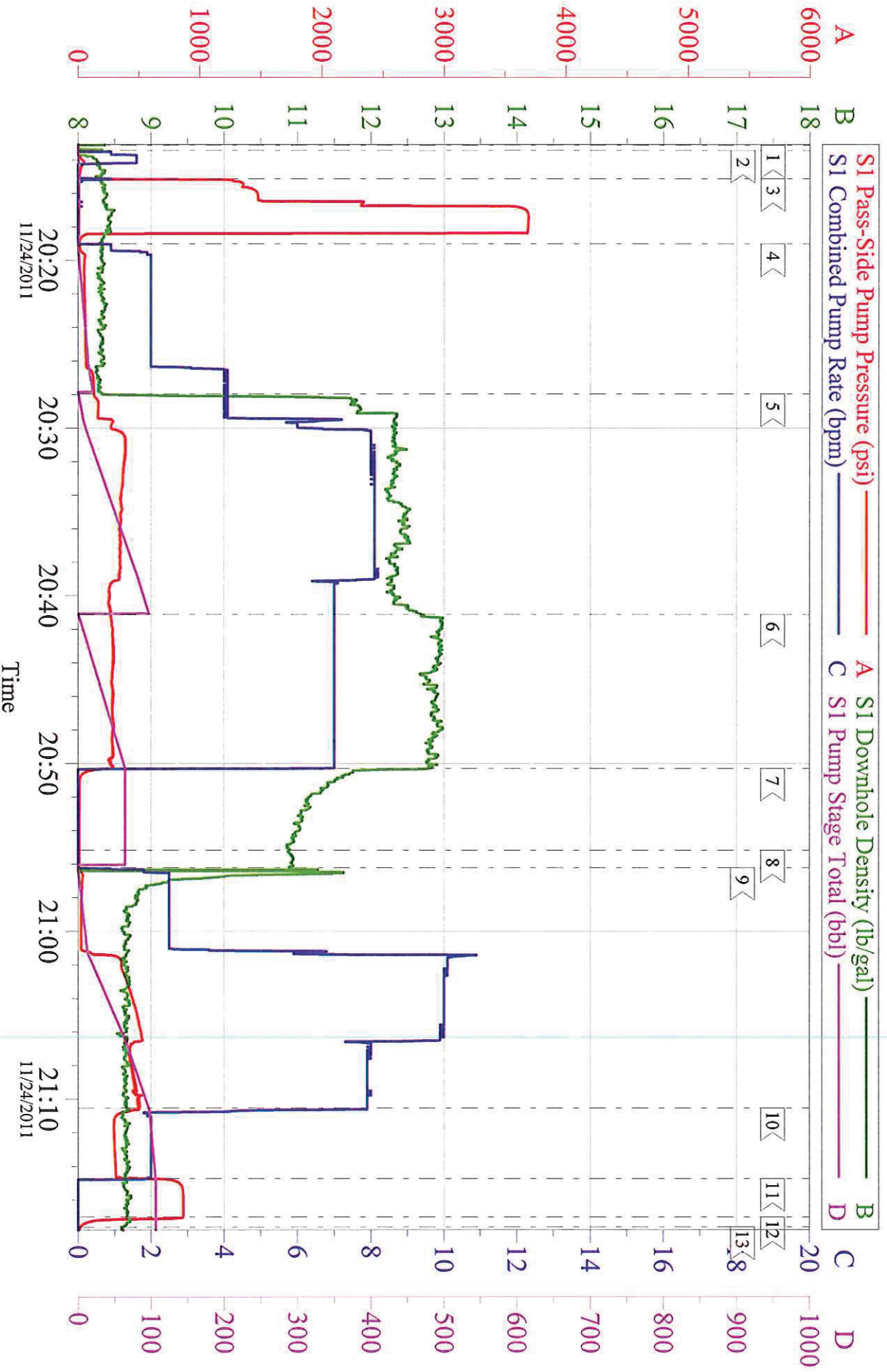
9 5/8 SURFACE



Customer: WILLIAMS	Job Date: 24-Nov-2011	Sales Order #: 9054540
Well Description: KP 511-27	Job Type: SURFACE	ADC Used: YES
Company Rep: AL DUNIHOO	Cement Supervisor: ERIC STILLSON	Elite #4: RUSTY WEAVER

WILLIAMS - KP 511-27

9 5/8 SURFACE



Customer: WILLIAMS
Well Description: KP 511-27
Company Rep: AL DUNIHOO

Job Date: 24-Nov-2011
Job Type: SURFACE
Cement Supervisor: ERIC STILLSON

Sales Order #: 9054540
ADC Used: YES
Elite #: RUSTY WEAVER