



Copyright (c) 2011 by Canrig Drilling Technology, Ltd.

Houston, TX

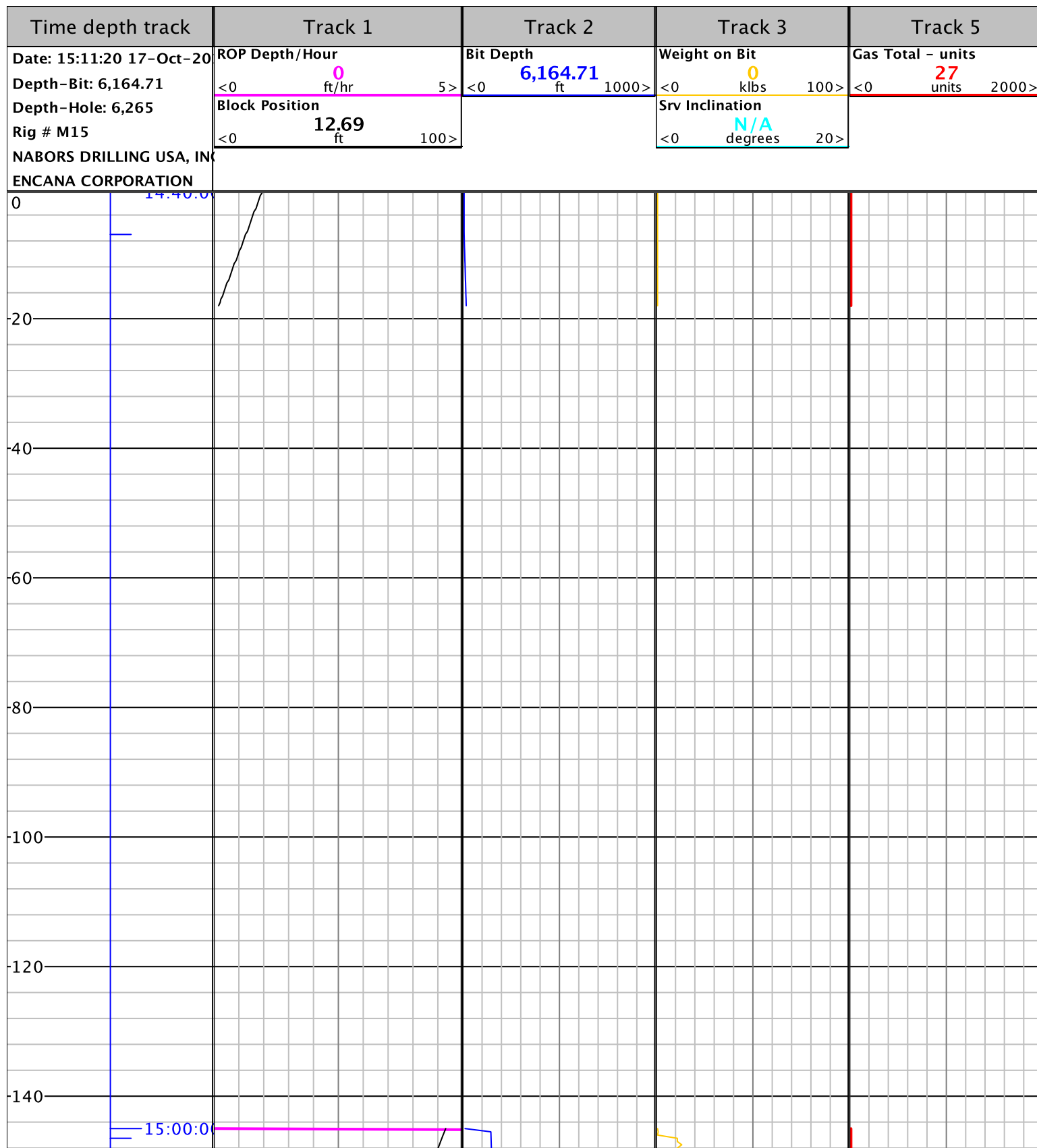
Main (281) 774-5600 / Support (866) 433-4345  
www.myWells.com

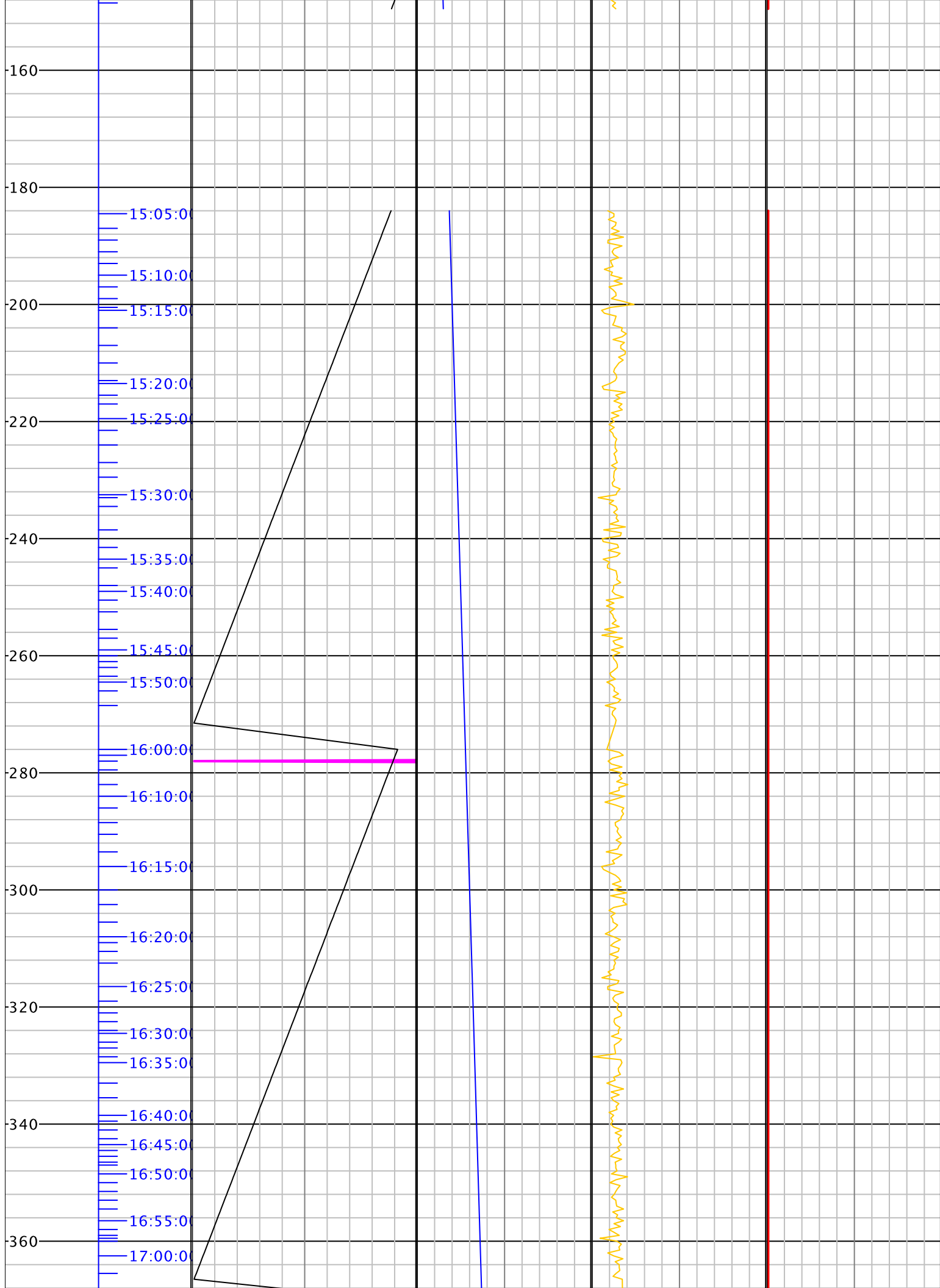
Operator  
Well  
Field  
State  
County  
Rig Number  
Spud Date  
API Number  
Contractor

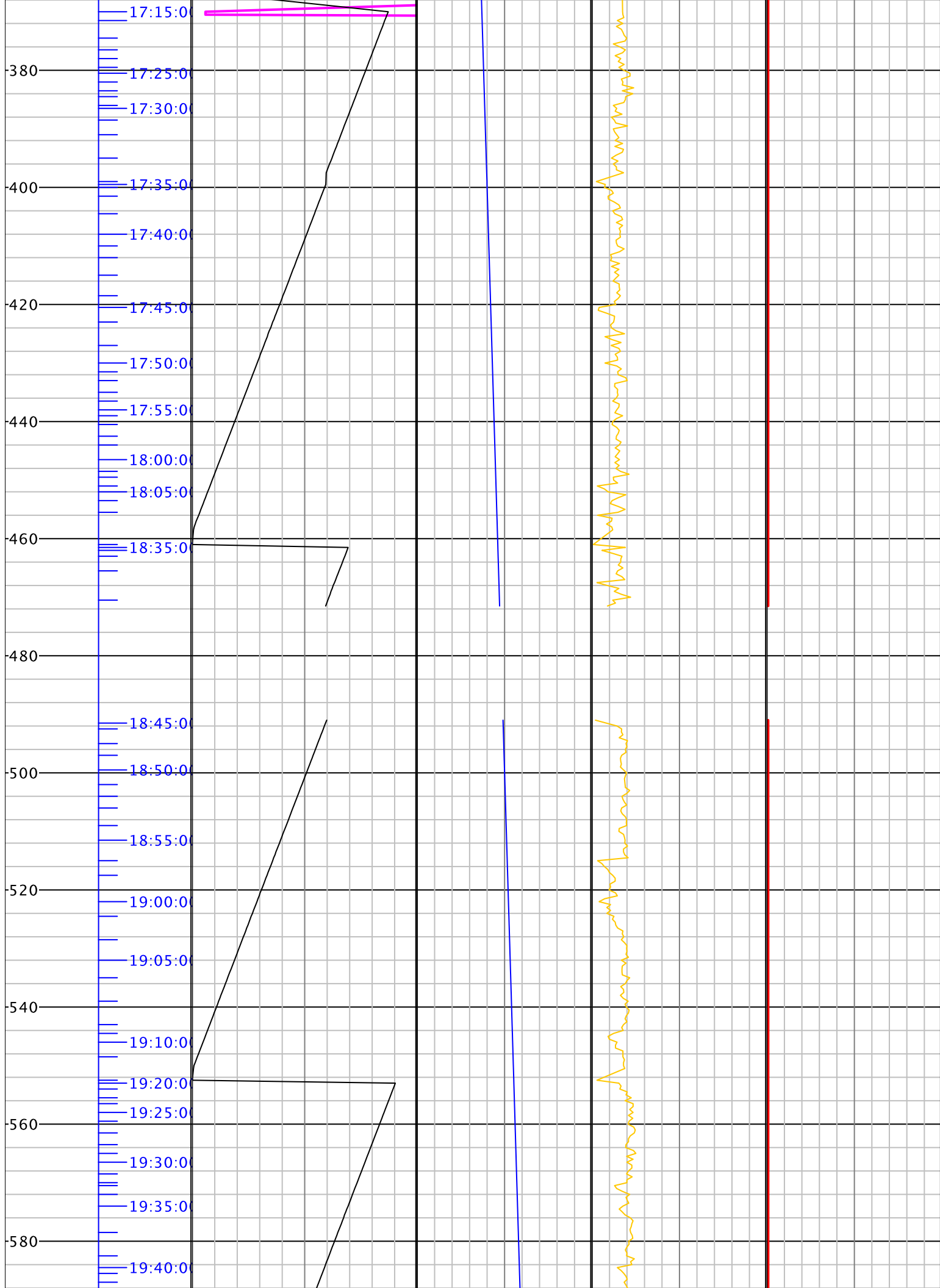
ENCANA CORPORATION  
00M15-TWIN CREEK 1-10B1  
MORATORIUM  
COLORADO  
GARFIELD  
M15  
2010-09-07  
NABORS DRILLING USA, INC.

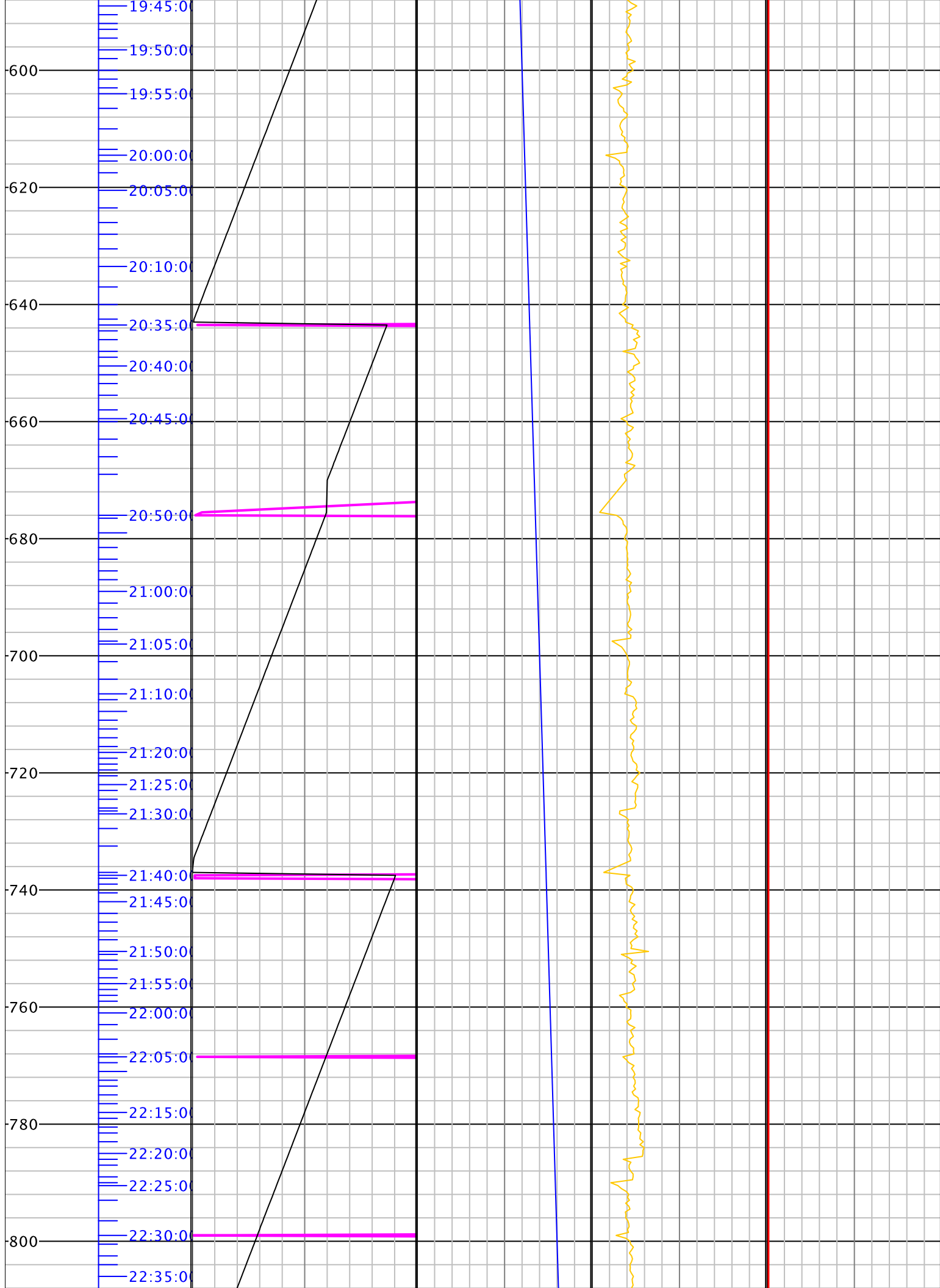
DEPTHS: 0.5 TO 6,265

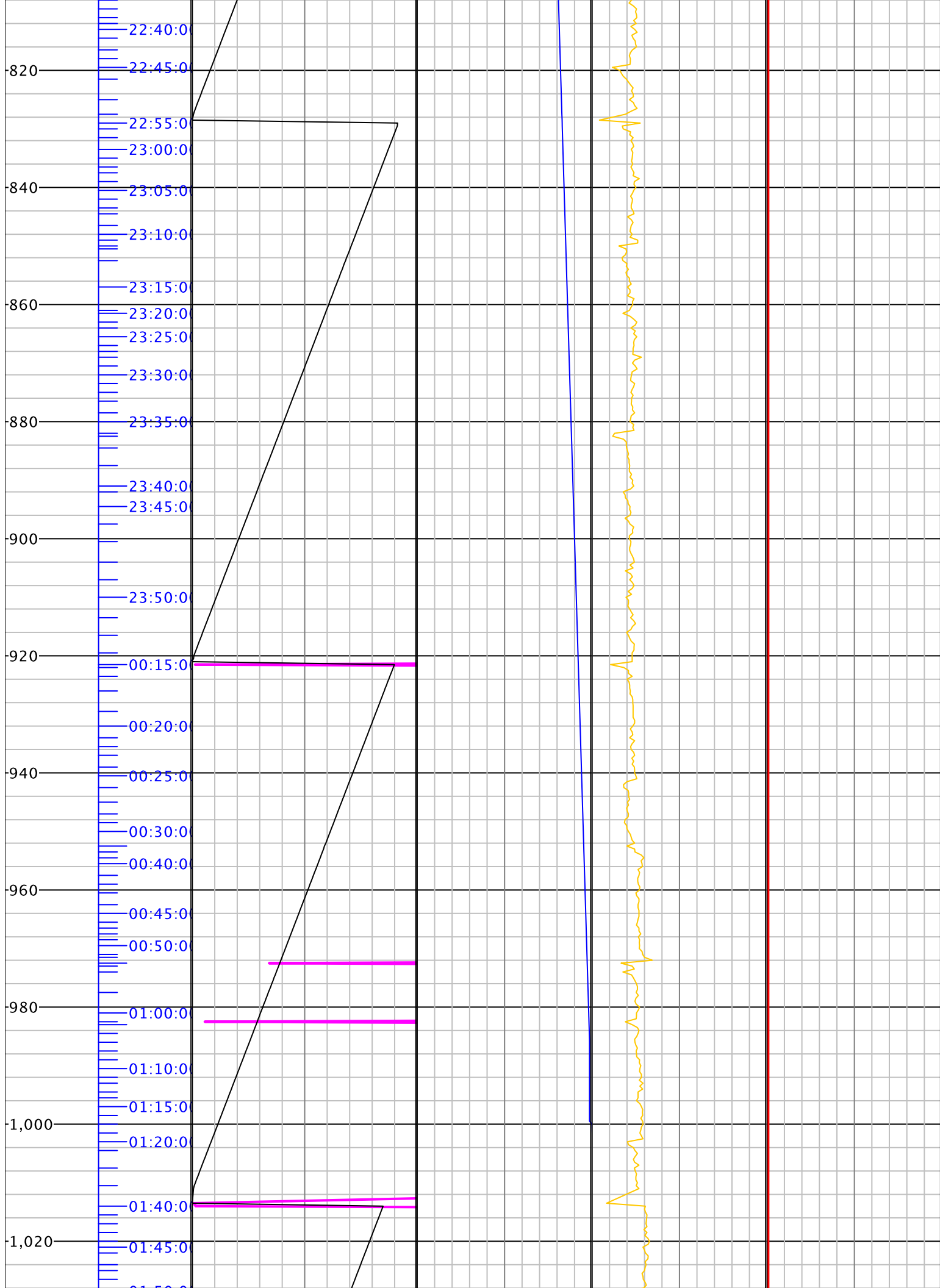
SCALE: 5"=100'

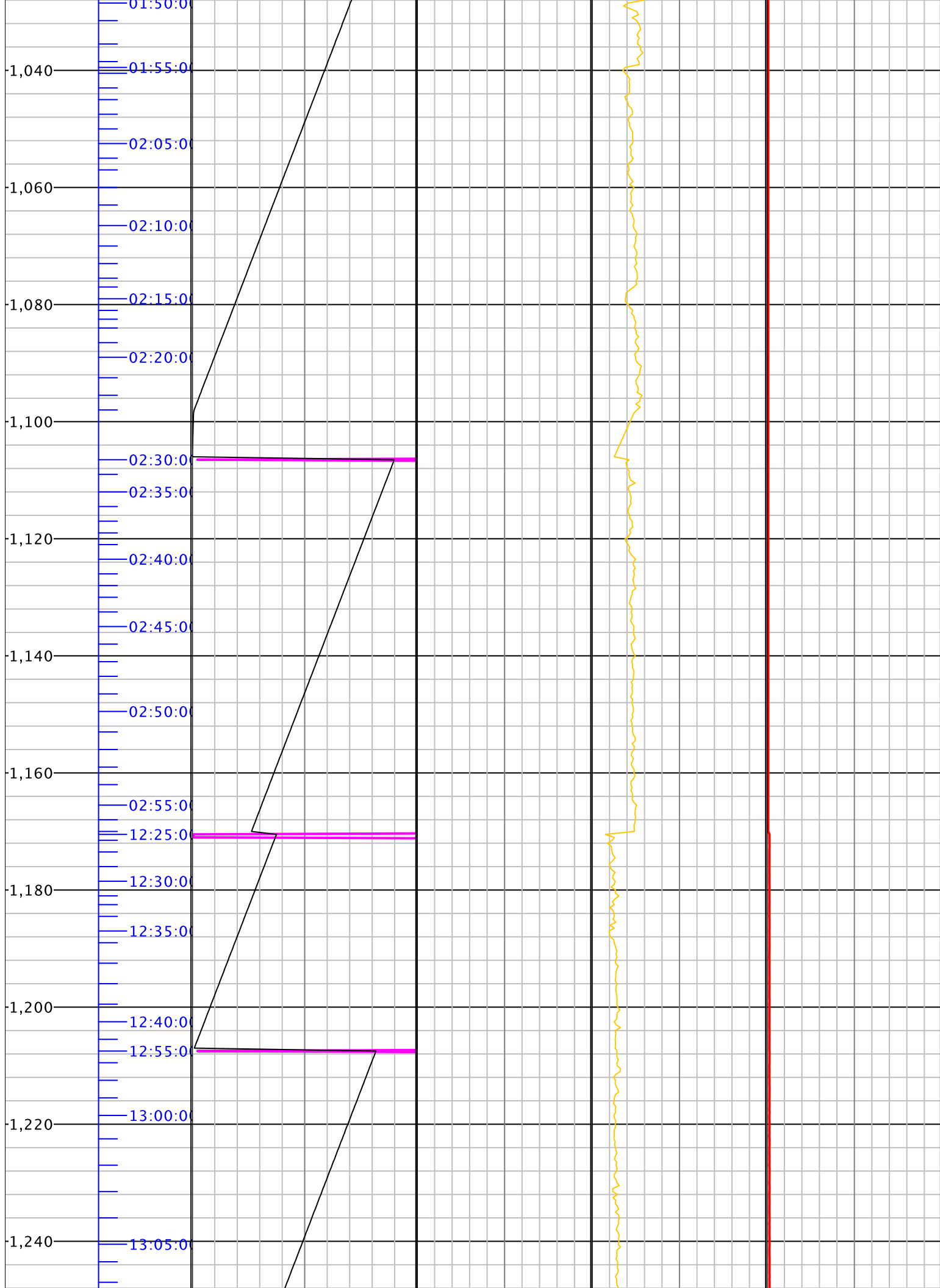


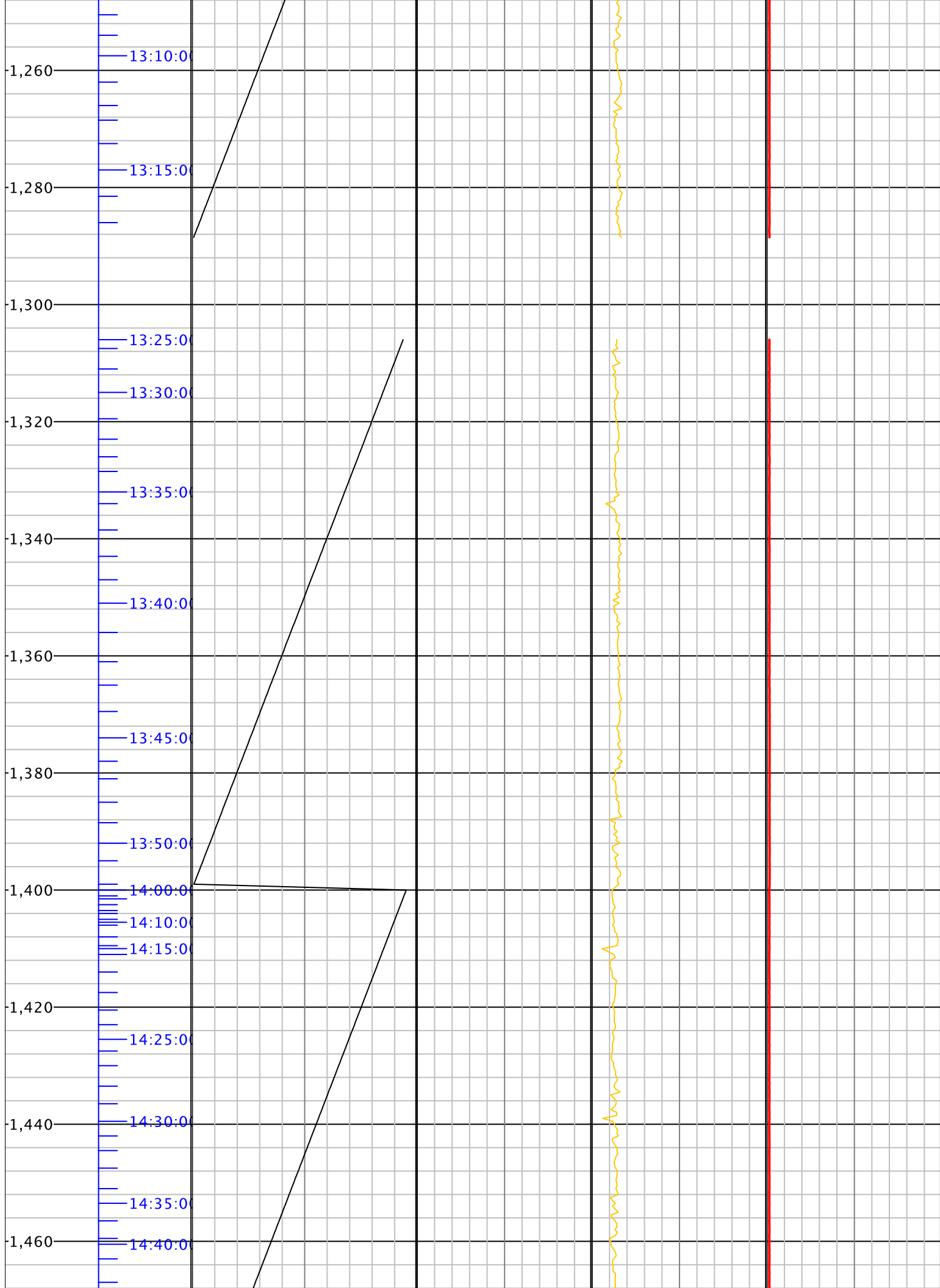


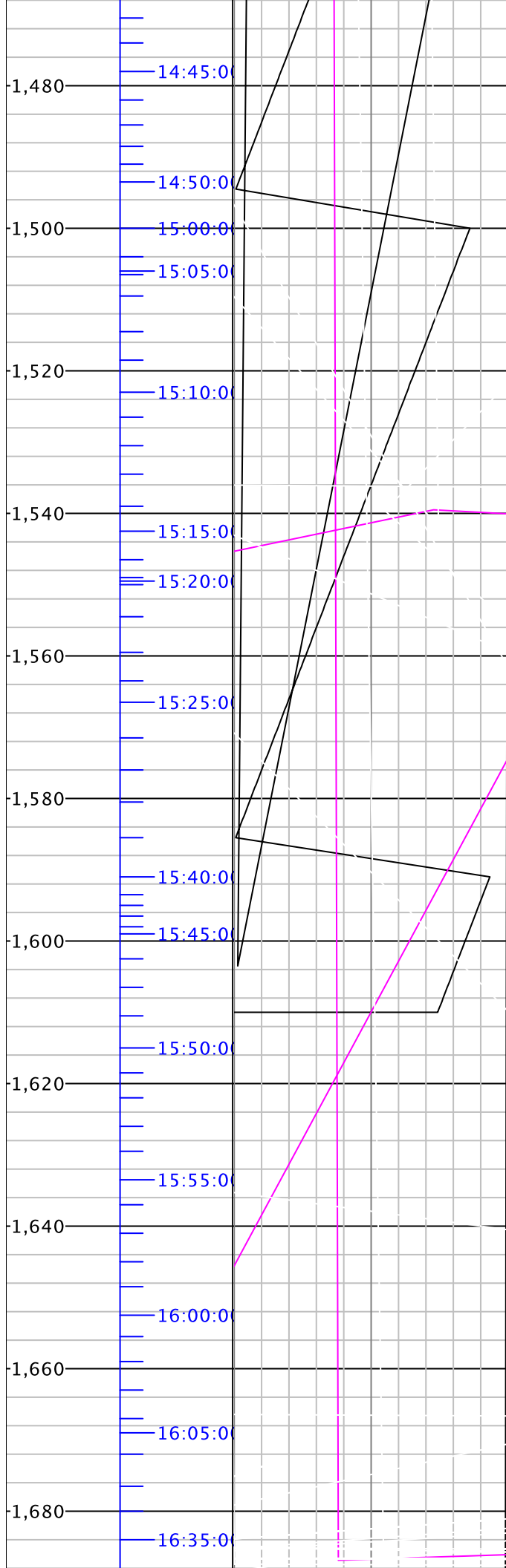














-1,700

-1,720

-1,740

-1,760

-1,780

-1,800

-1,820

-1,840

-1,860

-1,880

-1,900

