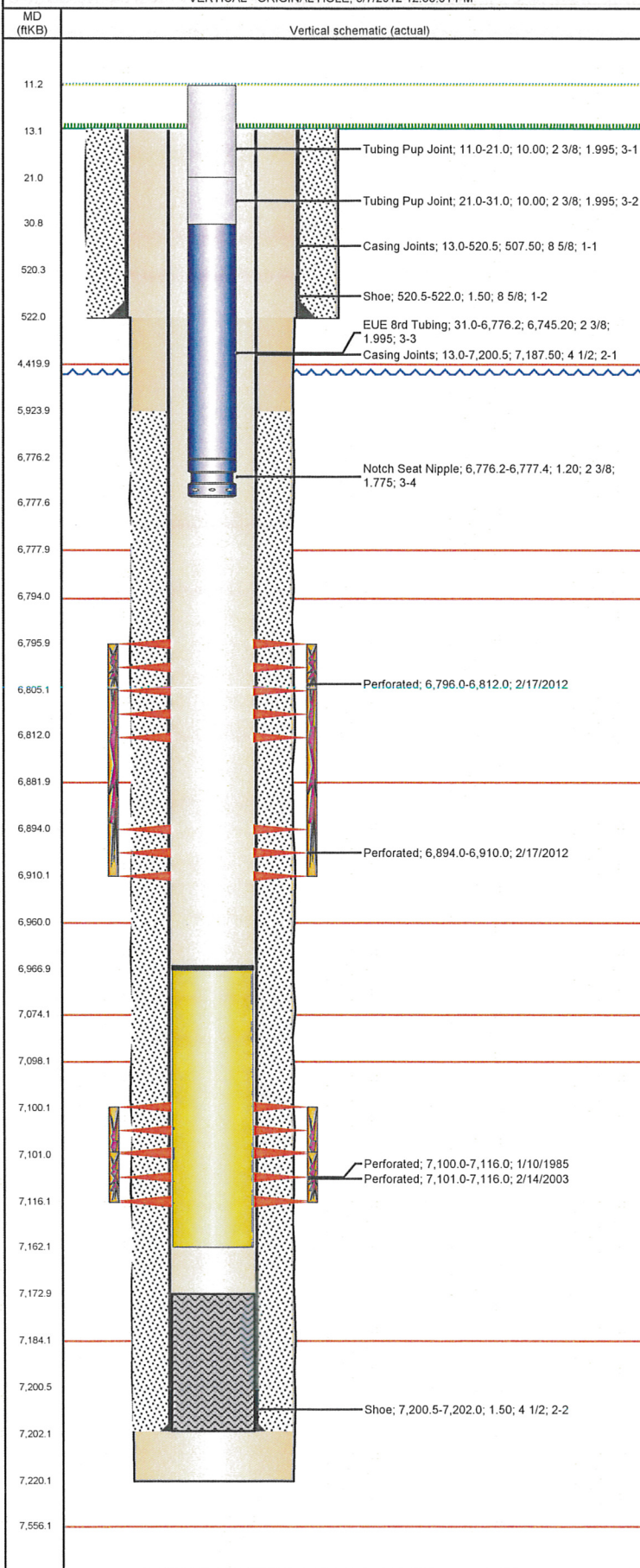


Frac Wellbore Schematic Report

Well Name: CHESNUT G22-03

VERTICAL - ORIGINAL HOLE. 8/7/2012 12:33:01 PM



Well Header

API 05-123-12188	Business Unit WATTENBERG	District 15	Well Config VERTICAL
Original KB Elevation (ft) 4.751.00	KB - GL / MSL (ftKB) 13.00	Spud Date 12/9/1984	P & A Date

Comment
Comm w/G22-4 3/15/01; Tight @ 5050'-5150'. 3/8/2012, NOTE: COLLAPSED CSG @ 6967' KB.

Directions To Well
WCR 44 & 43, EAST 0.2, SOUTH 0.2, EAST 0.1 INTO.

Current PBTD (ftKB)
ORIGINAL HOLE - 6.967.0

Surface Location (Congressional)

Quarter 1	Quarter 2	Quarter 3 NE	Quarter 4 NW	Section 22	Township 4	Twnshp N...	Range 65	Rng E/W Dir
-----------	-----------	-----------------	-----------------	---------------	---------------	-------------	-------------	-------------

Bottom Hole Location

North-South Distance (ft)	From N or S Line	East-West Distance (ft)	From E or W Line
---------------------------	------------------	-------------------------	------------------

Plug Back Total Depths

Date	Depth (ftKB)	Method	Com
1/2/1985	7,173.0	CASED HOLE LOG	DEPTH LOGGER ON CBL
3/1/2003	7,163.0	TAG	47' RAT HOLE

Wellbore Sections

Section Des	Size (in)	Act Top (ftKB)	Act Btm (ftKB)
SURFACE	12 1/4	13.0	522.0
PRODUCTION	7 7/8	522.0	7,220.0

Zone Statuses

Zone Name	Status Date	Status	Job
CODELL	1/17/1985	PR	DRILLING/COMPLETION - ORIGINAL, 12/9/1984 00:00
CODELL	3/5/2003	PR	RE-FRAC, 2/14/2003 00:00
CODELL	2/16/2012	SI	RECOMPLETION, 2/14/2012 10:00
NIOBRARA	3/12/2012	PR	RECOMPLETION, 2/14/2012 10:00

Casing Strings

Csg Des	Run Date	OD (in)	Wt/Len (lb/ft)	Grade	Top (ftKB)	Set Depth (ftKB)
Surface	12/9/1984	8 5/8	24.00		13.0	522.0
Production	12/14/1984	4 1/2	10.50	?	13.0	7,202.0

Cement

Des	Top (ftKB)	Btm (ftKB)
SURFACE CASING CEMENT	13.0	522.0
PRODUCTION CASING CEMENT	5,924.0	7,202.0

Tubing Components

Item Desc	OD (in)	Wt (lb/ft)	Grade	Jts	Len (ft)
Tubing Pup Joint	2 3/8	4.70	J-55	1	10.00
Tubing Pup Joint	2 3/8	4.70	J-55	1	10.00
EUE 8rd Tubing	2 3/8	4.70	J-55	220	6,745.20
Notch Seat Nipple	2 3/8	4.70	N-80	1	1.20

Perforation Data

Zone	Bnch/St g	Entered Shot Total	Top (ftKB)	Btm (ftKB)	Date
NIOBRARA, ORIGINAL HOLE	A	32	6,796.0	6,812.0	2/17/2012
NIOBRARA, ORIGINAL HOLE	B	32	6,894.0	6,910.0	2/17/2012
CODELL, ORIGINAL HOLE		17	7,100.0	7,116.0	1/10/1985
CODELL, ORIGINAL HOLE		60	7,101.0	7,116.0	2/14/2003

Stimulations & Treatments

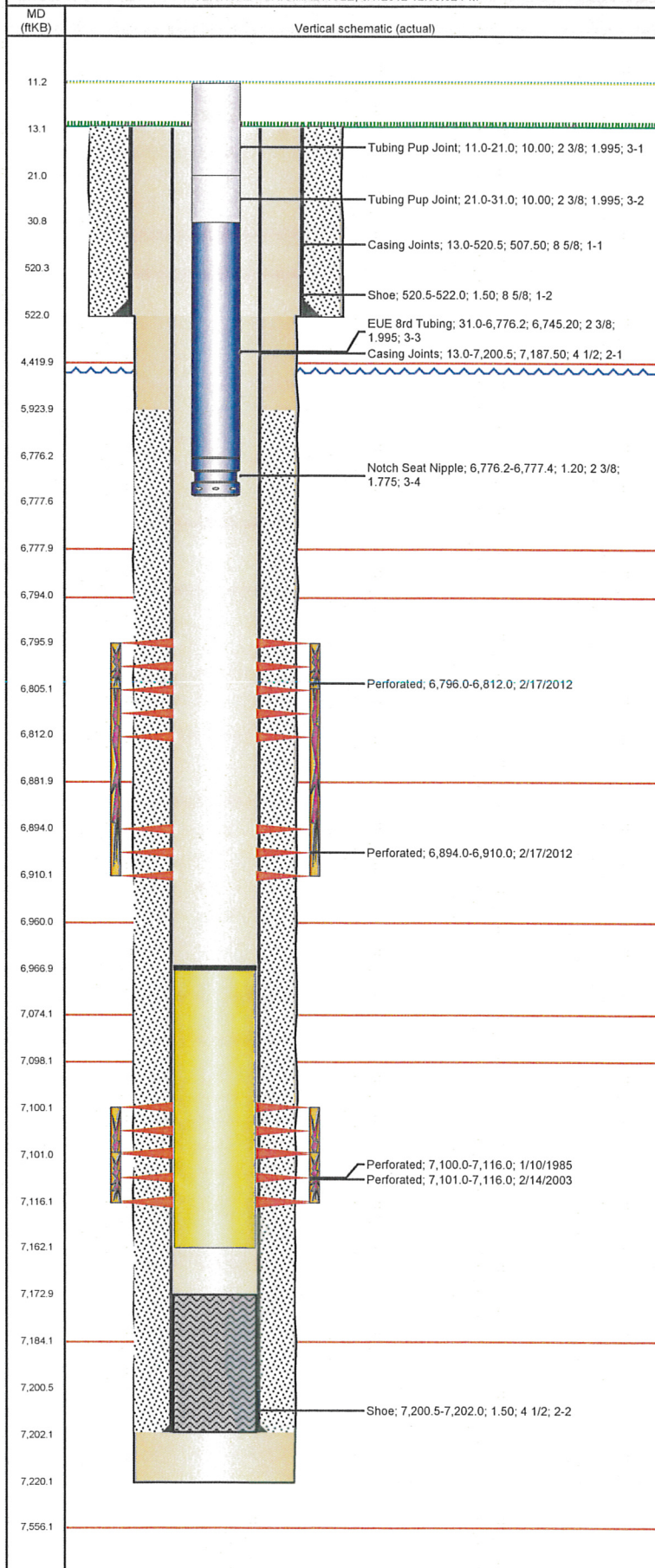
Brnch/Stg	Date	Zone	Primary Job Type
	1/14/1985	CODELL, ORIGINAL HOLE	DRILLING/COMPLETION - ORIGINAL

Comment

Total Add Amount Proppant 87500 lb; Proppant 100 MESH 18000 lb		Total Clean Volume...	Vol Slurry Tot (gal) 100959.60	Vol Gas Tot (MCF)
Avg Treat Pressure (psi)	Max Treat Pressure (psi)	Avg Treat Rate (bbl/min)	Max Treat Rate (bbl/min)	

Well Name: CHESNUT G22-03

VERTICAL - ORIGINAL HOLE, 8/7/2012 12:33:02 PM



Stimulations & Treatments

Brch/Stg	Date	Zone	Primary Job Type
	2/26/2003	CODELL, ORIGINAL HOLE	RE-FRAC
Comment			
Total Add Amount		Total Clean Volume...	Vol Slurry Tot (gal)
Proppant 246160 lb			133518.00
Avg Treat Pressure (psi)		Max Treat Pressure (psi)	Avg Treat Rate (bbl/min)
4,425.0		5,280.0	0.34
Max Treat Rate (bbl/min)		0.35	
Brch/Stg	Date	Zone	Primary Job Type
	3/5/2012	CODELL, ORIGINAL HOLE	RECOMPLETION
Comment			
(NIOBRARA) STARTED LATE DO TO 3 OUT OF 4 PUMPS GOING DOWN BEFORE PSI TEST.			
RAN 46 BBL EXTRA BBLs OF XLINK PAD BECAUSE VISC DROP TO 14 WAITED TILL IT CAME UP TO 16.7 BEFORE STARTING 1PPG SAND.			
5MIN SHUT IN PSI 3453			
Total Add Amount		Total Clean Volume...	Vol Slurry Tot (gal)
Proppant Ottawa 249687.899 lb		156383.23	167743.80
Avg Treat Pressure (psi)		Max Treat Pressure (psi)	Avg Treat Rate (bbl/min)
6,682.0		7,387.0	24.90
Max Treat Rate (bbl/min)		25.50	

Other In Hole

Run Date	Des	OD (in)	Top (ftKB)	Btm (ftKB)
2/16/2012	Sand plug	3.99	6,967.0	7,162.0

Logs

Date	Type	Top (ftKB)	Btm (ftKB)
12/14/1984	COMPENSATED DENSITY	4,350.0	7,220.0
12/14/1984	INDUCTION	522.0	7,220.0
2/2/1985	ACOUSTIC	5,841.0	7,173.0