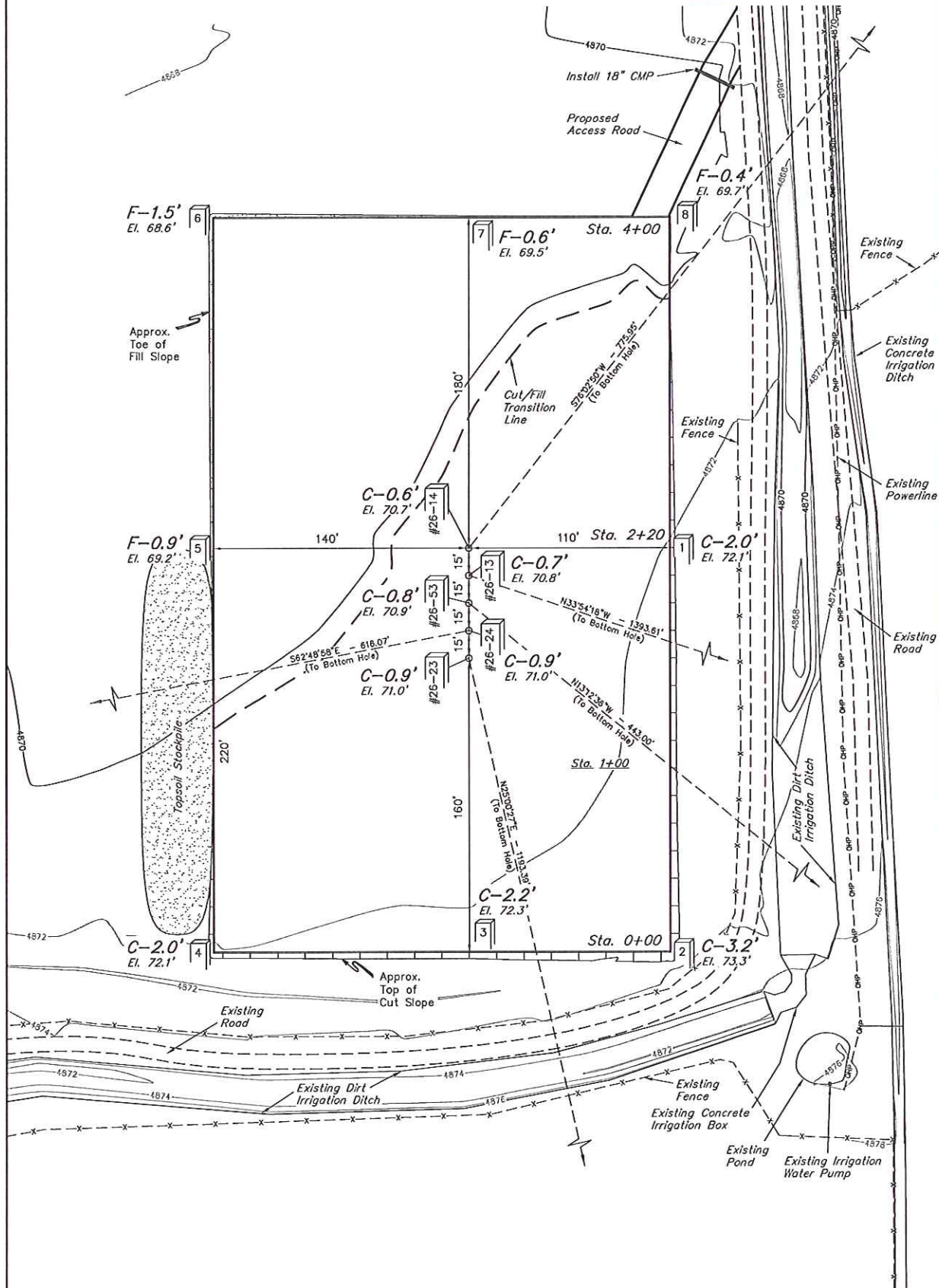


GREAT WESTERN OIL & GAS COMPANY
CONSTRUCTION LAYOUT FOR
ANDREWS #26-13, #26-14, #26-23,
#26-24, & #26-53
SECTION 26, T7N, R65W, 6th P.M.
SE 1/4 SW 1/4



FIGURE #1
SCALE: 1" = 50'
DATE: 03-12-12
DRAWN BY: T.B.
REVISED: 04-06-12
REVISED: 04-11-12



Elev. Ungraded Ground At #26-250 Loc. Stake = 4870.7'
FINISHED GRADE ELEV. AT #26-250 LOC. STAKE = 4870.1'

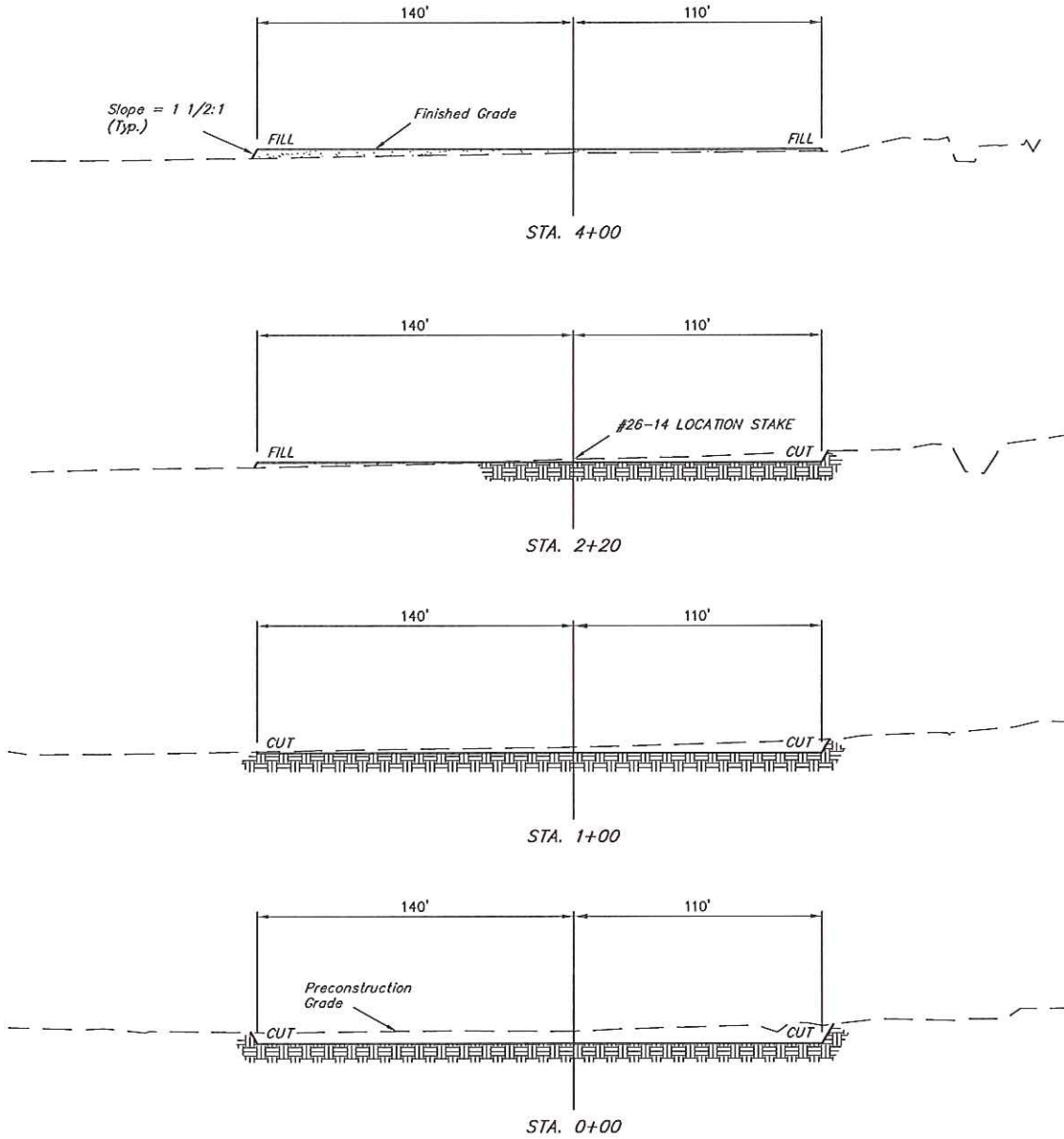
UINTAH ENGINEERING & LAND SURVEYING
85 So. 200 East • Vernal, Utah 84078 • (435) 789-1017

1" = 20'
 X-Section
 Scale
 1" = 50'
 DATE: 03-12-12
 DRAWN BY: T.B.
 REVISED: 04-06-12
 REVISED: 04-11-12

GREAT WESTERN OIL & GAS COMPANY
 CONSTRUCTION LAYOUT CROSS SECTIONS FOR
 ANDREWS #26-13, #26-14, #26-23,
 #26-24, & #26-53
 SECTION 26, T7N, R65W, 6th P.M.
 SE 1/4 SW 1/4



FIGURE #2



NOTE:
 Topsoil should not be
 Stripped Below Finished
 Grade on Substructure Area.

* NOTE:
 FILL QUANTITY INCLUDES
 5% FOR COMPACTION

APPROXIMATE YARDAGES

(6") Topsoil Stripping = 1,920 Cu. Yds.
 Remaining Location = 1,720 Cu. Yds.
 TOTAL CUT = 3,640 CU. YDS.
 FILL = 1,720 CU. YDS.

EXCESS MATERIAL = 1,920 Cu. Yds.
 Topsoil = 1,920 Cu. Yds.
 EXCESS UNBALANCE = 0 Cu. Yds.
 (After Interim Rehabilitation)

APPROXIMATE ACREAGES
 WELL SITE DISTURBANCE = ± 2.538 ACRES
 ACCESS ROAD DISTURBANCE = ± 0.091 ACRES
 TOTAL = ± 2.629 ACRES

UINTAH ENGINEERING & LAND SURVEYING
 85 So. 200 East • Vernal, Utah 84078 • (435) 769-1017



GREAT WESTERN OIL & GAS COMPANY
TYPICAL RIG LAYOUT FOR
ANDREWS #26-13, #26-14, #26-23,
#26-24, & #26-53
SECTION 26, T7N, R65W, 6th P.M.
SE 1/4 SW 1/4



FIGURE #3

SCALE: 1" = 50'
DATE: 03-12-12
DRAWN BY: T.B.
REVISED: 04-06-12
REVISED: 04-11-12

