

LEGEND:

PROPOSED LOCATION

GREAT WESTERN OIL & GAS COMPANY

ANDREWS #26-13, #26-14, #26-23, #26-24 & #26-53
SECTION 26, T7N, R65W, 6th P.M.
SE 1/4 SW 1/4



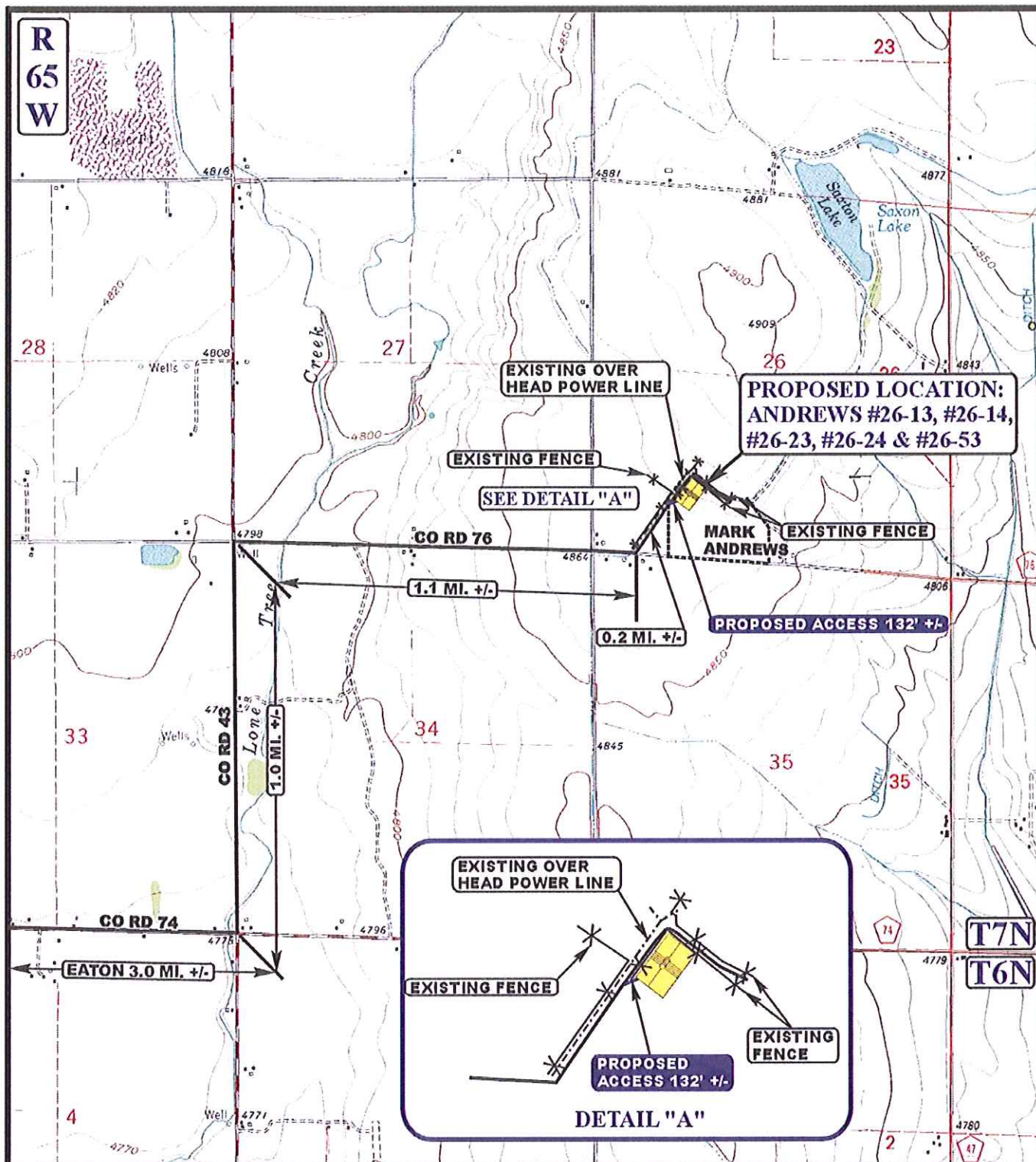
Uintah Engineering & Land Surveying
85 South 200 East Vernal, Utah 84078
(435) 789-1017 * FAX (435) 789-1813

ACCESS ROAD
MAP

02 23 12
MONTH DAY YEAR



SCALE: 1:100,000 DRAWN BY: A.T. REVISED: 04-11-12



LEGEND:

- EXISTING ROAD
- PROPOSED ACCESS ROAD
- EXISTING FENCE
- EXISTING POWER LINE

N

GREAT WESTERN OIL & GAS COMPANY

ANDREWS #26-13, #26-14, #26-23, #26-24 & #26-53
SECTION 26, T7N, R65W, 6th P.M.
SE 1/4 SW 1/4



Uintah Engineering & Land Surveying
85 South 200 East Vernal, Utah 84078
(435) 789-1017 * FAX (435) 789-1813

**ACCESS ROAD
MAP**

02 23 12
MONTH DAY YEAR

**B
TOPO**

SCALE: 1" = 2000' DRAWN BY: A.T. REVISED: 04-11-12

GREAT WESTERN OIL & GAS COMPANY

ANDREWS #26-13, #26-14,
#26-23, #26-24 & #26-53
SECTION 26, T7N, R65W, 6th P.M.

PROCEED IN AN EASTERLY DIRECTION FROM EATON, COLORADO ALONG COUNTY ROAD 74 APPROXIMATELY 3.0 MILES TO THE JUNCTION OF THIS ROAD AND COUNTY ROAD 43 TO THE NORTH; TURN LEFT AND PROCEED IN A NORTHERLY DIRECTION APPROXIMATELY 1.0 MILES TO THE JUNCTION OF THIS ROAD AND COUNTY ROAD 76 TO THE EAST; TURN RIGHT AND PROCEED IN AN EASTERLY DIRECTION APPROXIMATELY 1.1 MILES TO THE JUNCTION OF THIS ROAD AND AN EXISTING ROAD TO THE NORTHEAST; TURN LEFT AND PROCEED IN A NORTHEASTERLY DIRECTION APPROXIMATELY 0.2 MILES TO THE BEGINNING OF THE PROPOSED ACCESS ROAD TO THE NORTHEAST; FOLLOW ROAD FLAGS IN A NORTHEASTERLY DIRECTION APPROXIMATELY 132' TO THE PROPOSED LOCATION.

TOTAL DISTANCE FROM EATON, COLORADO TO THE PROPOSED LOCATION IS APPROXIMATELY 5.3 MILES.