

GREAT WESTERN OIL & GAS COMPANY
ANDREWS #26-53, #26-14, #26-13, #26-24 & #26-23
LOCATED IN WELD COUNTY, COLORADO
SECTION 26, T7N, R65W, 6th P.M.

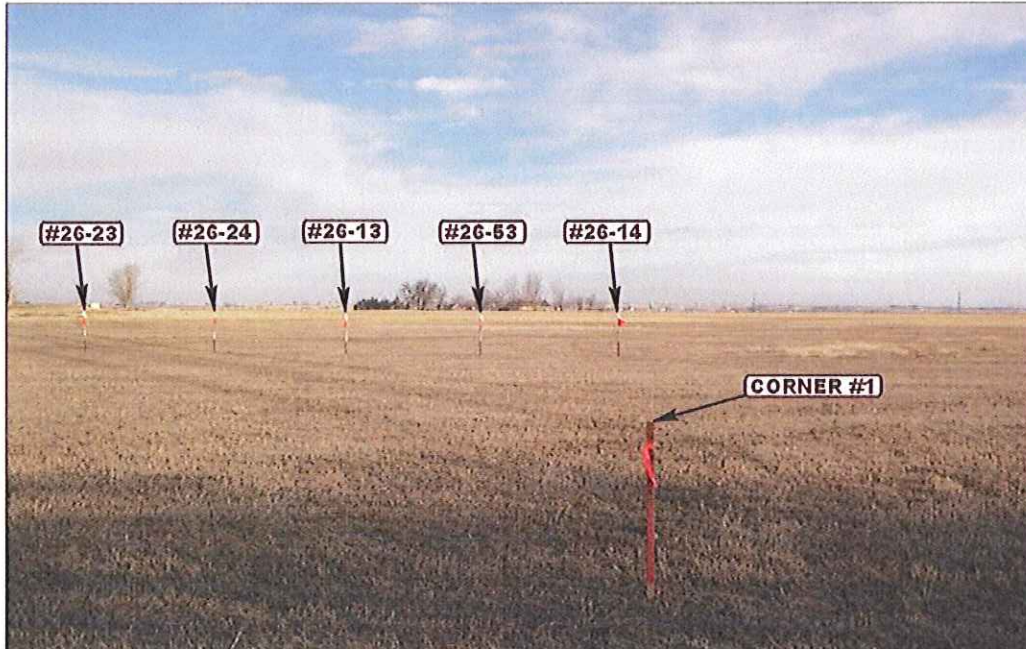


PHOTO: VIEW FROM CORNER #1 TO LOCATION STAKES

CAMERA ANGLE: SOUTHEASTERLY



PHOTO: VIEW OF EXISTING ACCESS

CAMERA ANGLE: NORTHERLY



Uintah Engineering & Land Surveying
85 South 200 East Vernal, Utah 84078
(435) 789-1017 * FAX (435) 789-1813

LOCATION PHOTOS

02 23 12
MONTH DAY YEAR

PHOTO

P1

TAKEN BY: D.N.

DRAWN BY: A.T.

REVISED: 00-00-00

GREAT WESTERN OIL & GAS COMPANY
ANDREWS #26-53, #26-14, #26-13, #26-24 & #26-23
 LOCATED IN WELD COUNTY, COLORADO
 SECTION 26, T7N, R65W, 6th P.M.

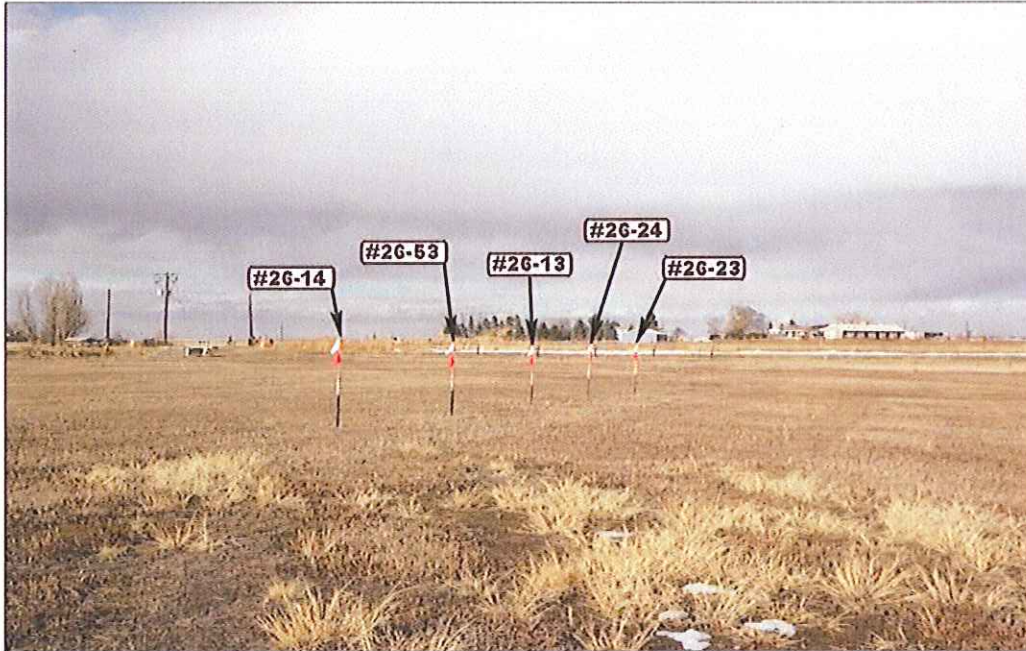


PHOTO: VIEW OF LOCATION STAKES

CAMERA ANGLE: NORTHERLY



PHOTO: VIEW OF LOCATION STAKES

CAMERA ANGLE: EASTERLY



U&LS Uintah Engineering & Land Surveying
 85 South 200 East Vernal, Utah 84078
 (435) 789-1017 * FAX (435) 789-1813

LOCATION PHOTOS

02 23 11
 MONTH DAY YEAR

PHOTO

P2

TAKEN BY: D.N. DRAWN BY: A.T. REVISED: 00-00-00

GREAT WESTERN OIL & GAS COMPANY

ANDREWS #26-53, #26-14, #26-13, #26-24 & #26-23

LOCATED IN WELD COUNTY, COLORADO
SECTION 26, T7N, R65W, 6th P.M.



PHOTO: VIEW OF LOCATION STAKES

CAMERA ANGLE: SOUTHERLY



PHOTO: VIEW OF LOCATION STAKES

CAMERA ANGLE: WESTERLY



• Since 1964 •

UELS

Uintah Engineering & Land Surveying
85 South 200 East Vernal, Utah 84078
(435) 789-1017 * FAX (435) 789-1813

LOCATION PHOTOS

02 23 12
MONTH DAY YEAR

PHOTO

P3

TAKEN BY: D.N. | DRAWN BY: A.T. | REVISED: 00-00-00