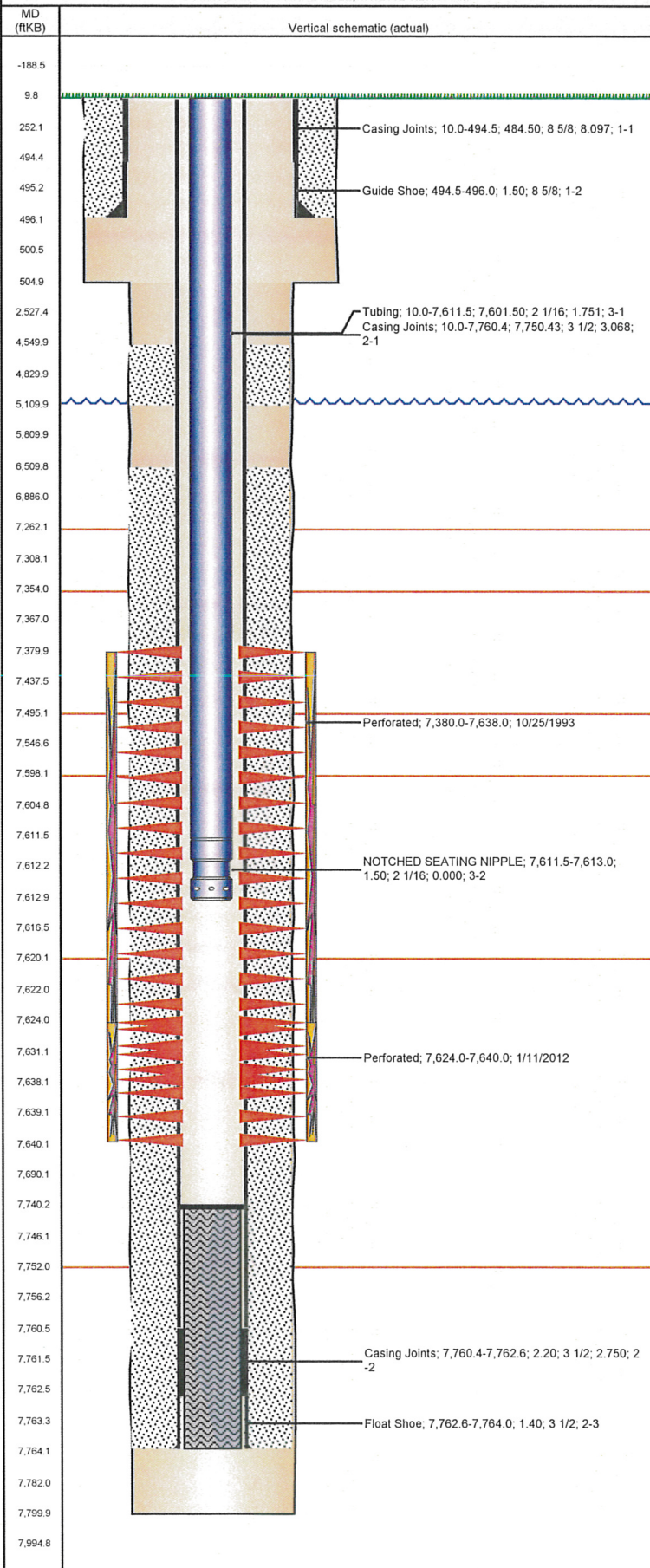


Well Name: ALMQUIST MB34-15

VERTICAL - ORIGINAL HOLE, 8/7/2012 9:27:48 AM



Well Header

API 05-013-06441	Business Unit WATTENBERG	District 15	Well Config VERTICAL
Original KB Elevation (ft) 5,077.00	KB - GL / MSL (ftKB) 10.00	Spud Date 10/6/1993	P & A Date

Comment

Directions To Well

HWY 52 & HWY 287, EAST 0.1, NORTH 0.1, WEST 300' INTO.

Current PBTD (ftKB)

ORIGINAL HOLE - 7,740.0

Surface Location (Congressional)

Quarter 1	Quarter 2	Quarter 3	Quarter 4	Section	Township	Twship N...	Range	Rng E/W Dir
		SW	SE	34	2	N	69	W

Bottom Hole Location

North-South Distance (ft)	From N or S Line	East-West Distance (ft)	From E or W Line
---------------------------	------------------	-------------------------	------------------

Plug Back Total Depths

Date	Depth (ftKB)	Method	Com
10/11/1993	7,760.0	CASING TALLY	GUIDE SHOE
10/25/1993	7,740.0	CASED HOLE LOG	DEPTH LOGGER

Wellbore Sections

Section Des	Size (in)	Act Top (ftKB)	Act Btm (ftKB)
SURFACE	12 1/4	10.0	505.0
PRODUCTION	7 7/8	505.0	7,800.0

Zone Statuses

Zone Name	Status Date	Status	Job
NIOBRARA	12/27/1993	PR	DRILLING/COMPLETION - ORIGINAL, 10/6/1993 00:00
CODELL	12/27/1993	PR	DRILLING/COMPLETION - ORIGINAL, 10/6/1993 00:00
CODELL	2/25/2012	PR	RE-FRAC, 1/10/2012 06:00

Casing Strings

Csg Des	Run Date	OD (in)	Wt/Len (lb/ft)	Grade	Top (ftKB)	Set Depth (ftKB)
Surface	10/7/1993	8 5/8	24.00		10.0	496.0
Production	10/11/1993	3 1/2	7.70	M-75	10.0	7,764.0

Cement

Des	Top (ftKB)	Btm (ftKB)
SURFACE CASING CEMENT	10.0	496.0
PRODUCTION CASING CEMENT	4,550.0	5,110.0
PRODUCTION CASING CEMENT	6,510.0	7,764.0

Tubing Components

Item Des	OD (in)	Wt (lb/ft)	Grade	Jts	Len (ft)
Tubing	2 1/16	3.25	J-55	234	7,601.50
NOTCHED SEATING NIPPLE	2 1/16	0.00	X	1	1.50

Perforation Data

Zone	Bnch/St g	Entered Shot Total	Top (ftKB)	Btm (ftKB)	Date
NIOBRARA-CODELL, ORIGINAL...		14	7,380.0	7,638.0	10/25/1993
CODELL, ORIGINAL HOLE		64	7,624.0	7,640.0	1/11/2012

Stimulations & Treatments

Bnch/Stg	Date	Zone	Primary Job Type
	11/4/1993	NIOBRARA-CODELL, ORIGINAL HOLE	DRILLING/COMPLETION - ORIGINAL

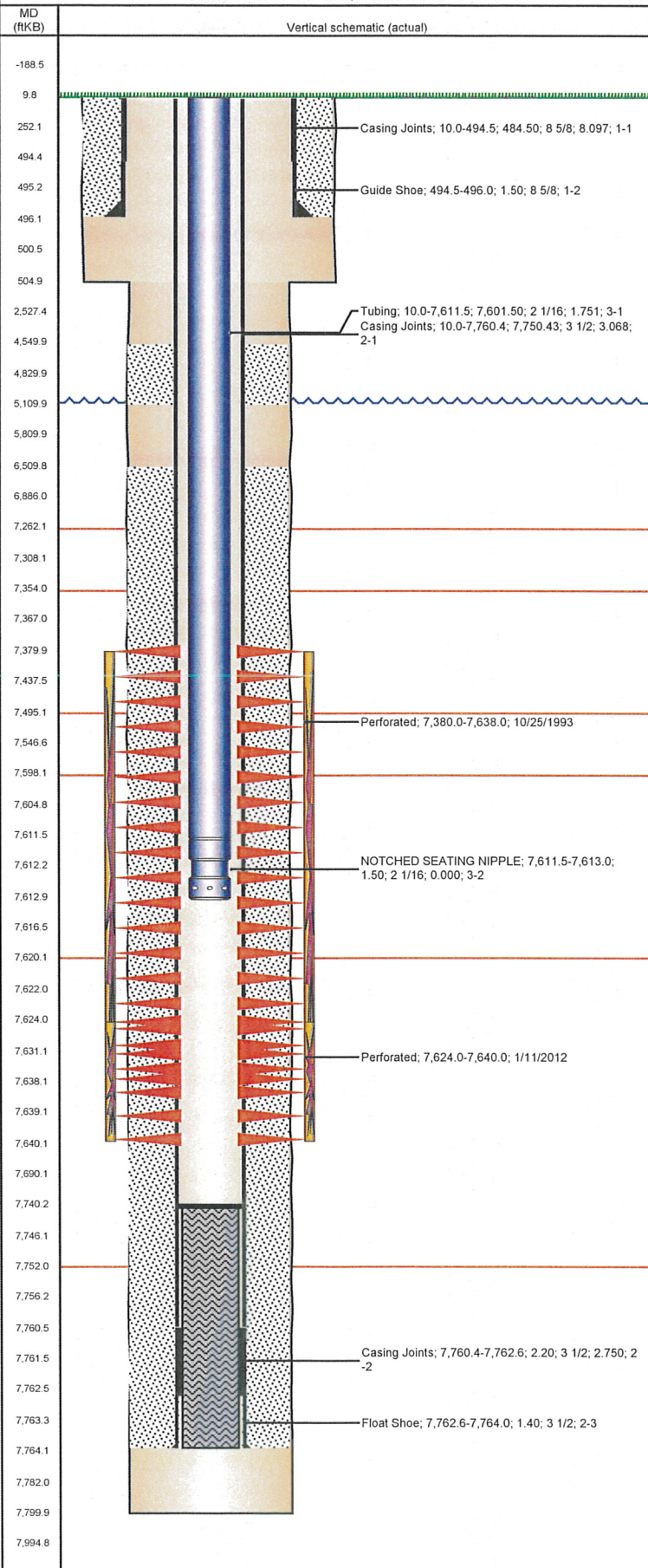
Comment

LIMITED ENTRY

Total Add Amount	Total Clean Volume...	Voi Slurry Tot (gal)	Voi Gas Tot (MCF)
Proppant Bulk Sand 300000 lb		105067.20	
Avg Treat Pressure (psi)	Max Treat Pressure (psi)	Avg Treat Rate (bbl/min)	Max Treat Rate (bbl/min)
4,700.0	5,805.0	31.00	31.00

Well Name: ALMQUIST MB34-15

VERTICAL - ORIGINAL HOLE, 8/7/2012 9:27:49 AM



Stimulations & Treatments

Bnch/Stg	Date	Zone	Primary Job Type
	1/16/2012	CODELL, ORIGINAL HOLE	RE-FRAC
<p>Comment</p> <p>(CODELL) - BREAK 2948 @ 2.2, ISIP 2921, 5 MIN 272. AVER PH 10.27, AVER VISC 24.2, AVER TEMP 63.9. BAD RECIRCULATION PUMP ON HYDRATION UNIT. GEL LOADING DROPPED FROM 22 TO 14 CP. SHUT DOWN 45 MIN. ADJUST HYDRATION UNIT AND STARTED AGAIN. SHUT DOWN (1.75 HR) AGAIN FROM SAME ISSUE. STARTED THIRD ATTEMPT, PUMP ENTIRE PAD BEFORE SHUTTING DOWN AGAIN. SECOND HYDRATION UNIT SENT OUT. BACKSIDE VALVE FREEZING UP TOWARD THE END OF 4#.</p>			
Total Add Amount	Total Clean Volume...	Vol Slurry Tot (gal)	Vol Gas Tot (MCF)
Proppant Ottawa 237611.65 lb	175460.46	186193.56	
Avg Treat Pressure (psi)	Max Treat Pressure (psi)	Avg Treat Rate (bbl/min)	Max Treat Rate (bbl/min)
6,643.0	7,069.0	14.70	22.20

Other In Hole

Run Date	Des	OD (in)	Top (ftKB)	Btm (ftKB)

Logs

Date	Type	Top (ftKB)	Btm (ftKB)
10/11/1993	COMPENSATED DENSITY	3,950.0	7,753.0
10/11/1993	INDUCTION	3,950.0	7,782.0
10/14/1993	CBL/CCL/GR	4,300.0	7,736.0