

T7N, R65W, 6th P.M.

GREAT WESTERN OIL & GAS COMPANY

Well location, ANDREWS #26-53, located as shown in the SE 1/4 SW 1/4 of Section 26, T7N, R65W, 6th P.M., Weld County, Colorado.

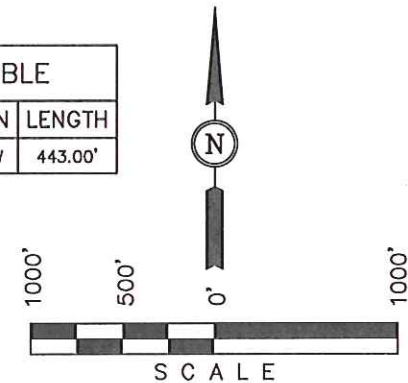
BASIS OF ELEVATION

USGS COOPERATIVE BASE NETWORK CONTROL STATION, DESIGNATION 'VERMILYEA'. NGS DATA SHEET LISTS THE NAVD 88 ELEVATION AS BEING 5026 FEET

BASIS OF BEARINGS

BASIS OF BEARINGS IS A G.P.S. OBSERVATION.

LINE TABLE		
LINE	DIRECTION	LENGTH
L1	N13°12'36"W	443.00'



CERTIFICATE

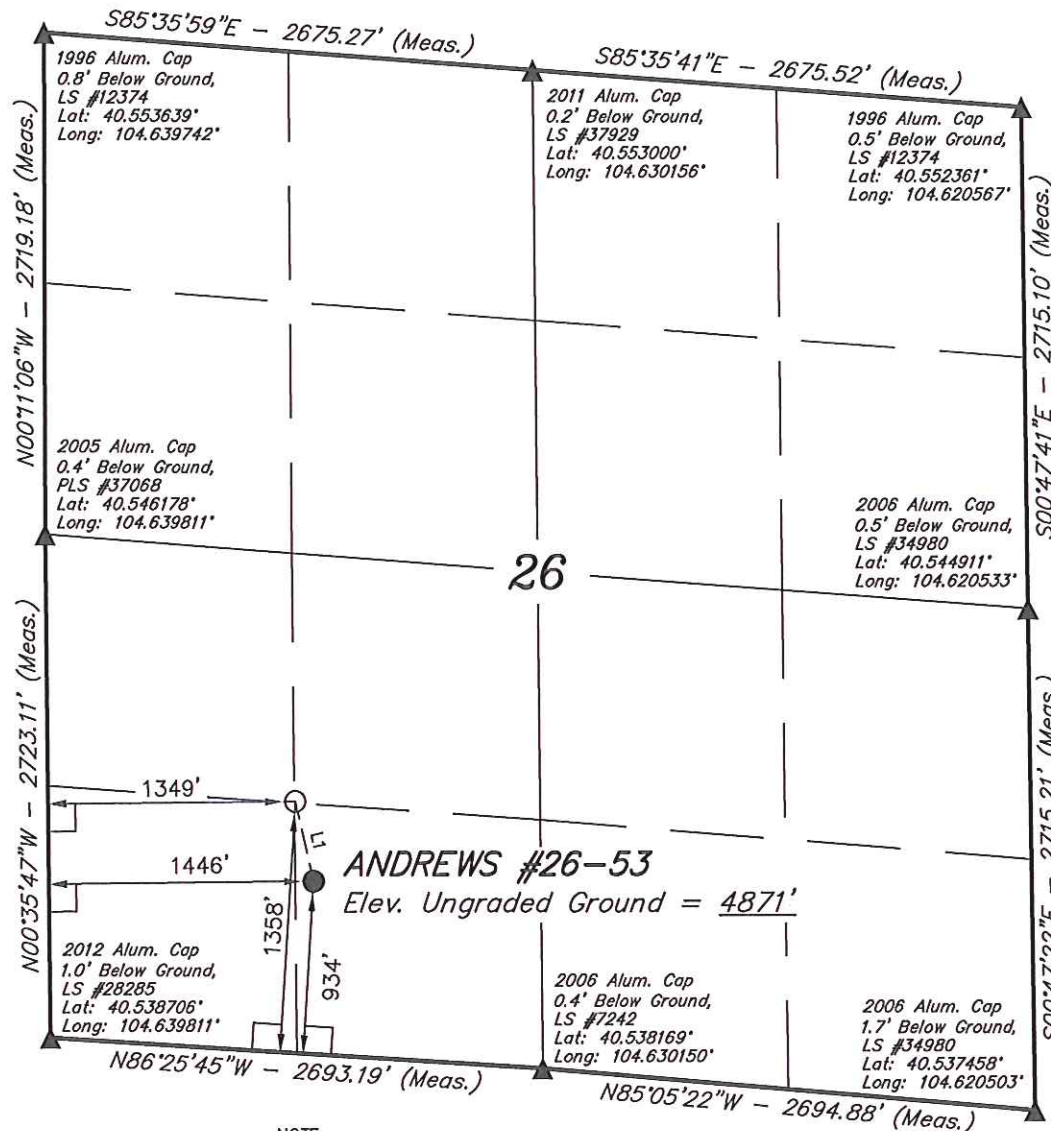
THIS IS TO CERTIFY THAT THE ABOVE PLAT WAS PREPARED FROM FIELD NOTES OF ACTUAL SURVEYS MADE BY ME OR UNDER MY SUPERVISION AND THAT THE SAME ARE TRUE AND CORRECT TO THE BEST OF MY KNOWLEDGE AND BELIEF.

REGISTERED LAND SURVEYOR
REGISTRATION NO. 17492
STATE OF COLORADO
04-11-12

REVISED: 04-11-12
REVISED: 04-06-12

UINTAH ENGINEERING & LAND SURVEYING
85 SOUTH 200 EAST - VERNAL, UTAH 84078
(435) 789-1017

SCALE 1" = 1000'	DATE SURVEYED: 02-17-12	DATE DRAWN: 03-01-12
PARTY D.N. G.W. T.B.	REFERENCES G.L.O. PLAT	
WEATHER COLD	FILE GREAT WESTERN OIL & GAS COMPANY	



NOTE:
SEE ADDENDUM TO LEGAL PLAT FOR
EXISTING IMPROVEMENTS WITHIN 400'
OF THE PROPOSED WELL DISTURBANCE.

PDOP = 1.2

LEGEND:

- └─┘ = 90° SYMBOL
- = PROPOSED WELL HEAD.
- ▲ = SECTION CORNERS LOCATED

NAD 83 (TARGET BOTTOM HOLE)	NAD 83 (SURFACE LOCATION)
LATITUDE = 40°32'31.83" (40.542175)	LATITUDE = 40°32'27.56" (40.540989)
LONGITUDE = 104°38'05.86" (104.634961)	LONGITUDE = 104°38'04.60" (104.634611)
NAD 27 (TARGET BOTTOM HOLE)	NAD 27 (SURFACE LOCATION)
LATITUDE = 40°32'31.90" (40.542194)	LATITUDE = 40°32'27.63" (40.541008)
LONGITUDE = 104°38'04.00" (104.634444)	LONGITUDE = 104°38'02.74" (104.634094)