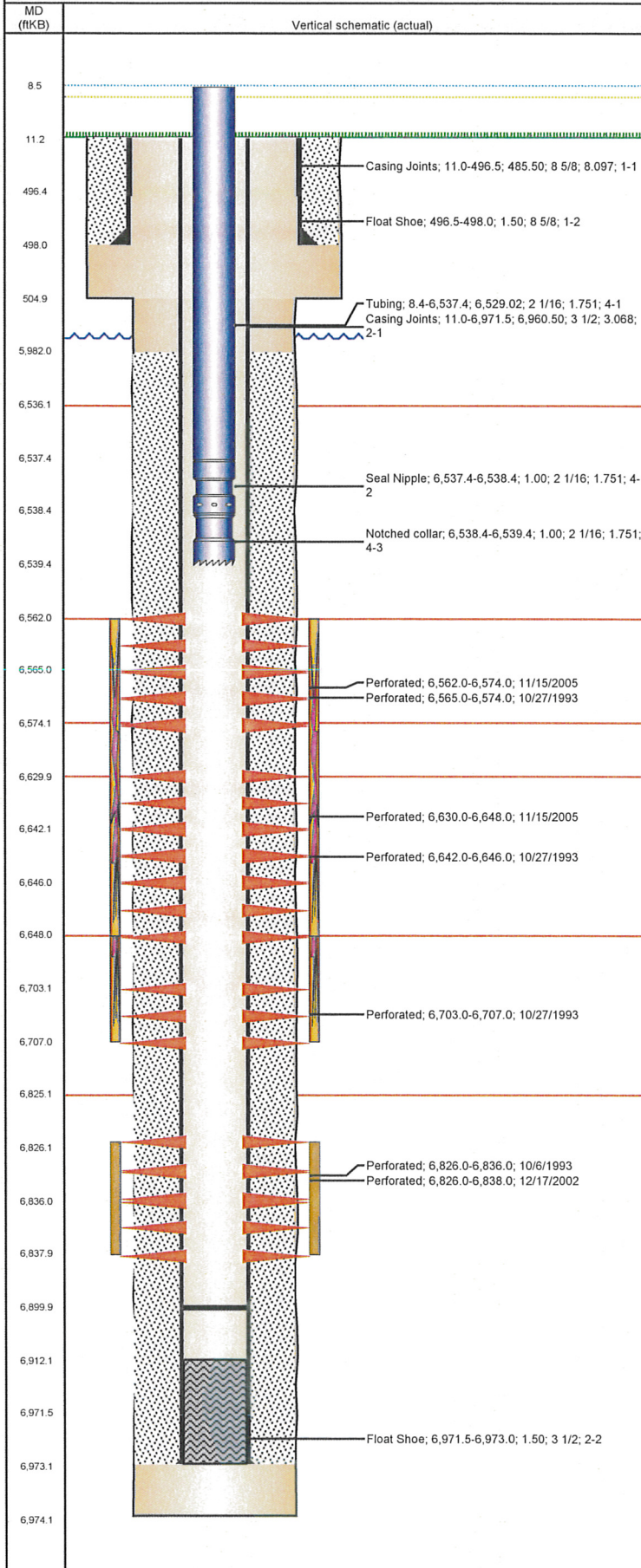


Well Name: CANTRELL 22-12

VERTICAL - ORIGINAL HOLE, 8/7/2012 9:17:26 AM



## Well Header

API	Business Unit	District	Well Config
05-123-17361	WATTENBERG	15	VERTICAL
Original KB Elevation (ft)	KB - GL / MSL (ftKB)	Spud Date	P & A Date
4,680.00	11.00	9/27/1993	
Comment			

## Directions To Well

WCR 55 & WCR42, NORTH 0.4, EAST 0.1, SOUTH 0.1 INTO

## Current PBTD (ftKB)

ORIGINAL HOLE - 6,900.0

## Surface Location (Congressional)

Quarter 1	Quarter 2	Quarter 3	Quarter 4	Section	Township	Twtnshp N...	Range	Rng E/W Dir
		NW	SW	22	4	N	64	W

## Bottom Hole Location

North-South Distance (ft)	From N or S Line	East-West Distance (ft)	From E or W Line

## Plug Back Total Depths

Date	Depth (ftKB)	Method	Com
10/1/1993	6,912.0	CASED HOLE LOG	DEPTH LOGGER ON CBL
11/13/2008	6,897.0	TUBING TALLY	FILL

## Wellbore Sections

Section Des	Size (in)	Act Top (ftKB)	Act Btm (ftKB)
SURFACE	12 1/4	11.0	505.0
PRODUCTION	7 7/8	505.0	6,974.0

## Zone Statuses

Zone Name	Status Date	Status	Job
NIORARA	11/4/1993	PR	DRILLING/COMPLETION - ORIGINAL, 9/27/1993 00:00
NIORARA	12/15/2005	PR	RE-FRAC, 11/11/2005 00:00
NIORARA	1/2/2006	PR	RE-FRAC, 11/11/2005 00:00
CODELL	11/4/1993	PR	DRILLING/COMPLETION - ORIGINAL, 9/27/1993 00:00
CODELL	12/27/2003	PR	RE-FRAC, 12/13/2002 00:00
CODELL	11/11/2005	SI	RE-FRAC, 11/11/2005 00:00
CODELL	1/2/2006	PR	RE-FRAC, 11/11/2005 00:00
CODELL	3/9/2012	PR	TRI-FRAC, 1/23/2012 06:00

## Casing Strings

Csg Des	Run Date	OD (in)	Wt/Len (lb/ft)	Grade	Top (ftKB)	Set Depth (ftKB)
Surface	9/28/1993	8 5/8	23.00		11.0	498.0
Production	10/1/1993	3 1/2	7.70	M-75	11.0	6,973.0

## Cement

Des	Top (ftKB)	Btm (ftKB)
SURFACE CASING CEMENT	11.0	498.0
PRODUCTION CASING CEMENT	5,982.0	6,973.0

## Tubing Components

Item Des	OD (in)	Wt (lb/ft)	Grade	Jts	Len (ft)
Tubing	2 1/16	3.25	J-55	201	6,529.02
Seal Nipple	2 1/16	3.25	J-55	1	1.00
Notched collar	2 1/16	3.25	J-55	1	1.00

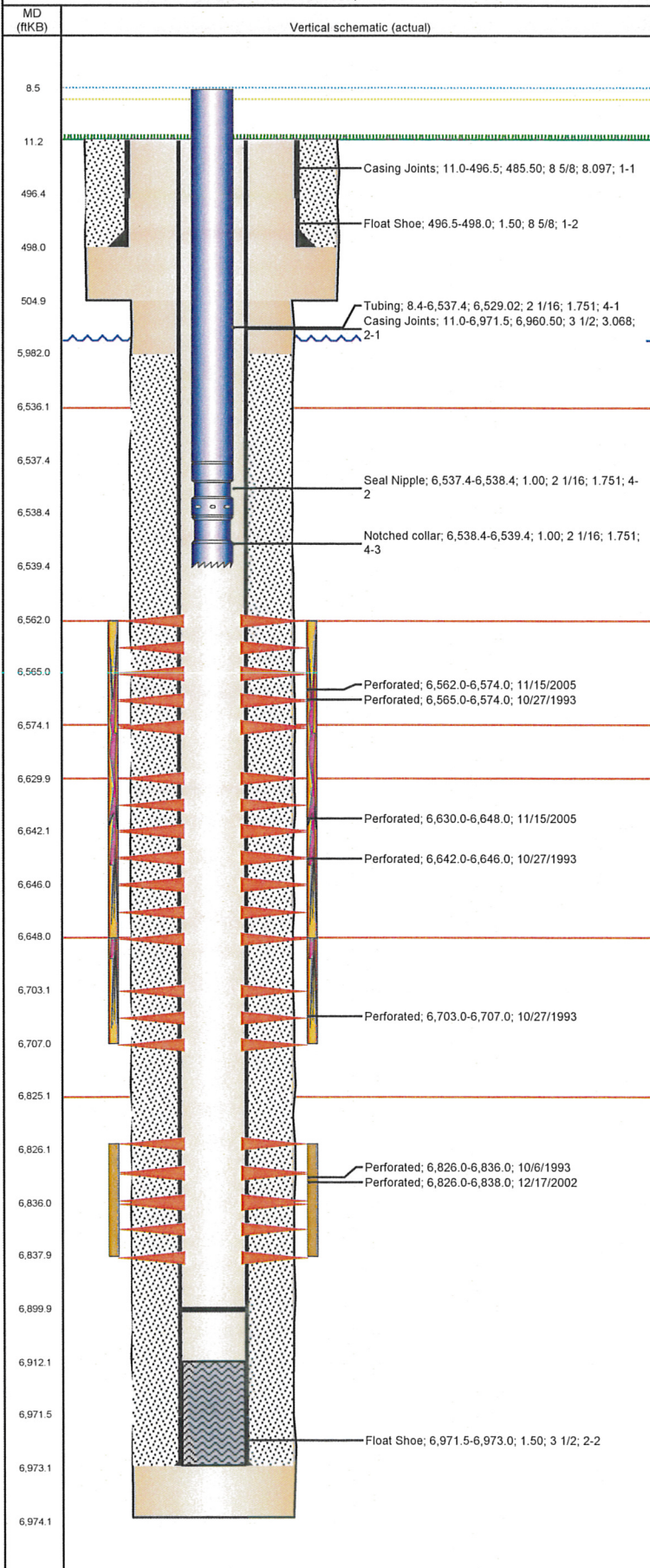
## Perforation Data

Zone	Bnch/St g	Entered Shot Total	Top (ftKB)	Btm (ftKB)	Date
NIORARA, ORIGINAL HOLE	A	72	6,562.0	6,574.0	11/15/2005
NIORARA, ORIGINAL HOLE	A	8	6,565.0	6,574.0	10/27/1993
NIORARA, ORIGINAL HOLE	B	108	6,630.0	6,648.0	11/15/2005
NIORARA, ORIGINAL HOLE	B	10	6,642.0	6,646.0	10/27/1993
NIORARA, ORIGINAL HOLE	C	6	6,703.0	6,707.0	10/27/1993
CODELL, ORIGINAL HOLE		20	6,826.0	6,836.0	10/6/1993
CODELL, ORIGINAL HOLE		48	6,826.0	6,838.0	12/17/2002



Well Name: CANTRELL 22-12

VERTICAL - ORIGINAL HOLE, 8/7/2012 9:17:26 AM



## Stimulations & Treatments

Bnch/Stg	Date	Zone	Primary Job Type
	10/18/1993	CODELL, ORIGINAL HOLE	DRILLING/COMPLETION - ORIGINAL

Comment

Total Add Amount	Total Clean Volume...	Vol Slurry Tot (gal)	Vol Gas Tot (MCF)
Proppant 190000 lb		49434.00	
Avg Treat Pressure (psi)	Max Treat Pressure (psi)	Avg Treat Rate (bbl/min)	Max Treat Rate (bbl/min)
3,960.0	5,128.0	18.00	20.00

Bnch/Stg	Date	Zone	Primary Job Type
	10/28/1993	NIOBRARA, ORIGINAL HOLE	DRILLING/COMPLETION - ORIGINAL

Comment

Total Add Amount	Total Clean Volume...	Vol Slurry Tot (gal)	Vol Gas Tot (MCF)
Proppant 163000 lb		54348.00	
Avg Treat Pressure (psi)	Max Treat Pressure (psi)	Avg Treat Rate (bbl/min)	Max Treat Rate (bbl/min)
4,900.0	5,400.0	19.80	20.00

Bnch/Stg	Date	Zone	Primary Job Type
	12/19/2002	CODELL, ORIGINAL HOLE	RE-FRAC

Comment

Total Add Amount	Total Clean Volume...	Vol Slurry Tot (gal)	Vol Gas Tot (MCF)
Proppant Ottawa 244470 lb		131334.00	
Avg Treat Pressure (psi)	Max Treat Pressure (psi)	Avg Treat Rate (bbl/min)	Max Treat Rate (bbl/min)
7,296.0	7,833.0	14.10	14.40

Bnch/Stg	Date	Zone	Primary Job Type
	12/14/2005	NIOBRARA, ORIGINAL HOLE	RE-FRAC

Comment

Total Add Amount	Total Clean Volume...	Vol Slurry Tot (gal)	Vol Gas Tot (MCF)
Proppant Ottawa 238560 lb; Proppant SB EXCEL 12000 lb		169008.00	
Avg Treat Pressure (psi)	Max Treat Pressure (psi)	Avg Treat Rate (bbl/min)	Max Treat Rate (bbl/min)
5,990.0	6,286.0	40.50	48.00

Bnch/Stg	Date	Zone	Primary Job Type
	1/31/2012	CODELL, ORIGINAL HOLE	TRI-FRAC

Comment

(CODELL TF): OPENED WELL AT 7:36 PAKER TEST. WELL HEAD FAILED. REPLACED WELL HEAD, ISIP 3855, BREAK4183, 5MIN 2967, RATE 2.9. JOB WENT WELL WITH NOTHING FURTHER TO REPORT. WE HAD TO KEEP PRESSURE ON THE BACK SIDE TO KEEP THE WELL FROM COMMUNICATING. WE KEPT A PUMP ROLLING AT 1/2 BARREL A MINUTE AND PRESSURE NEVER GOT ABOUT 2600 POUNDS.

Total Add Amount	Total Clean Volume...	Vol Slurry Tot (gal)	Vol Gas Tot (MCF)
Proppant Ottawa 255150.8 lb	133048.44	144609.36	
Avg Treat Pressure (psi)	Max Treat Pressure (psi)	Avg Treat Rate (bbl/min)	Max Treat Rate (bbl/min)
7,213.0	7,639.0	15.70	16.10

## Other In Hole

Run Date	Des	OD (in)	Top (ftKB)	Btm (ftKB)

## Logs

Date	Type	Top (ftKB)	Btm (ftKB)
10/1/1992	COMPENSATED DENSITY	4,140.0	6,970.0
10/1/1992	INDUCTION	499.0	6,970.0
10/6/1993	CEMENT BOND	5,800.0	6,912.0
3/15/2011	GYRO	10.0	6,800.0