

HALLIBURTON

BOREHOLE VOLUME
PLOT

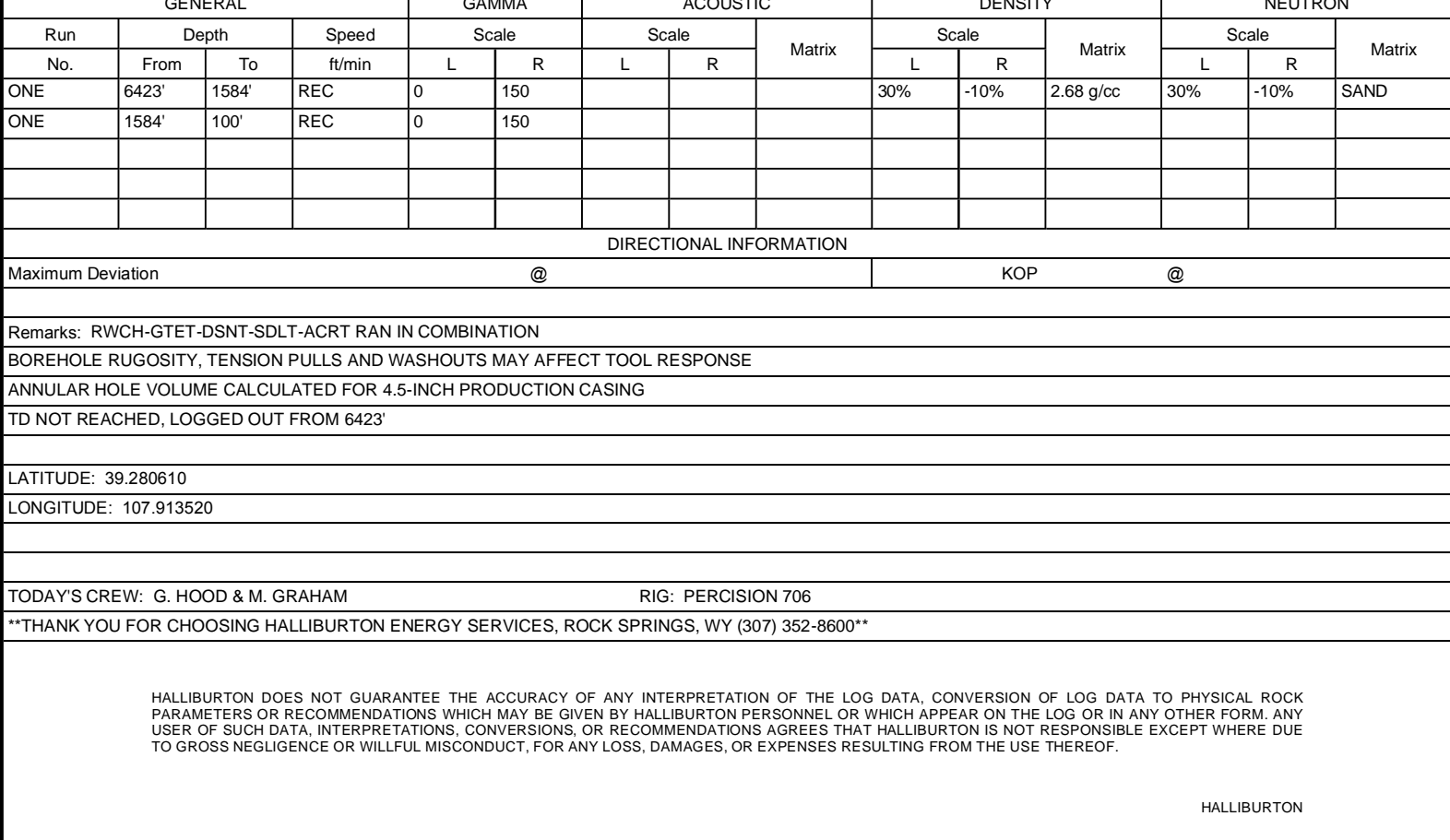
HALLIBURTON										BOREHOLE VOLUME PLOT					
COMPANY				LARAMIE ENERGY				COMPANY				LARAMIE ENERGY			
WELL				HAWXHURST 17-03C				WELL				HAWXHURST 17-03C			
FIELD				BRUSH CREEK				FIELD				BRUSH CREEK			
COUNTY				MESA				COUNTY				MESA			
STATE				COLORADO				STATE				COLORADO			
Permanent Datum				GL				API No.				05077101600000			
Log measured from				KB				Location				SURFACE HOLE LOCATION: SEC 17 T9S R94W : 1268' FNL, 396' FWL			
Drilling measured from				KB				BOTTOM HOLE LOCATION: SEC 17 T9S R94W : 833' FNL, 1952' FWL				Other Services: RWCH DSNT/SDLT ACRT			
Date				28-Nov-11				Sect. 17				Twp. 9S			
Run No.				ONE				Rge. 94W							
Depth - Driller				7490.00 ft											
Depth - Logger				6423.0 ft											
Bottom - Logged Interval				6400.0 ft											
Top - Logged Interval				1584.0 ft											
Casing - Driller				8.625 in @ 1585.0 ft											
Casing - Logger				1584.0 ft											
Bit Size				7.875 in											
Type Fluid in Hole				OBM											
Density				9.5 ppg				55.00 s/qt							
PH				9.50 pH				6.8 cpm							
Source of Sample				MUD TANK											
Rm @ Meas. Temperature				1.720 ohmm @ 51.40 degF											
Rmf @ Meas. Temperature				1.42 ohmm @ 61.20 degF											
Rmc @ Meas. Temperature				1.870 ohmm @ 72.00 degF											
Source Rmf				MEASURED				MEASURED							
Rm @ BHT				0.57 ohmm @ 170.0 degF											
Time Since Circulation				14.2 hr											
Time on Bottom				28-Nov-11 06:40											
Max. Rec. Temperature				170.0 degF @ 6423.0 ft											
Equipment				11362657				ROCK SPRING							
Recorded By				V. CREWS											
Witnessed By				C. CLAUSSEN											

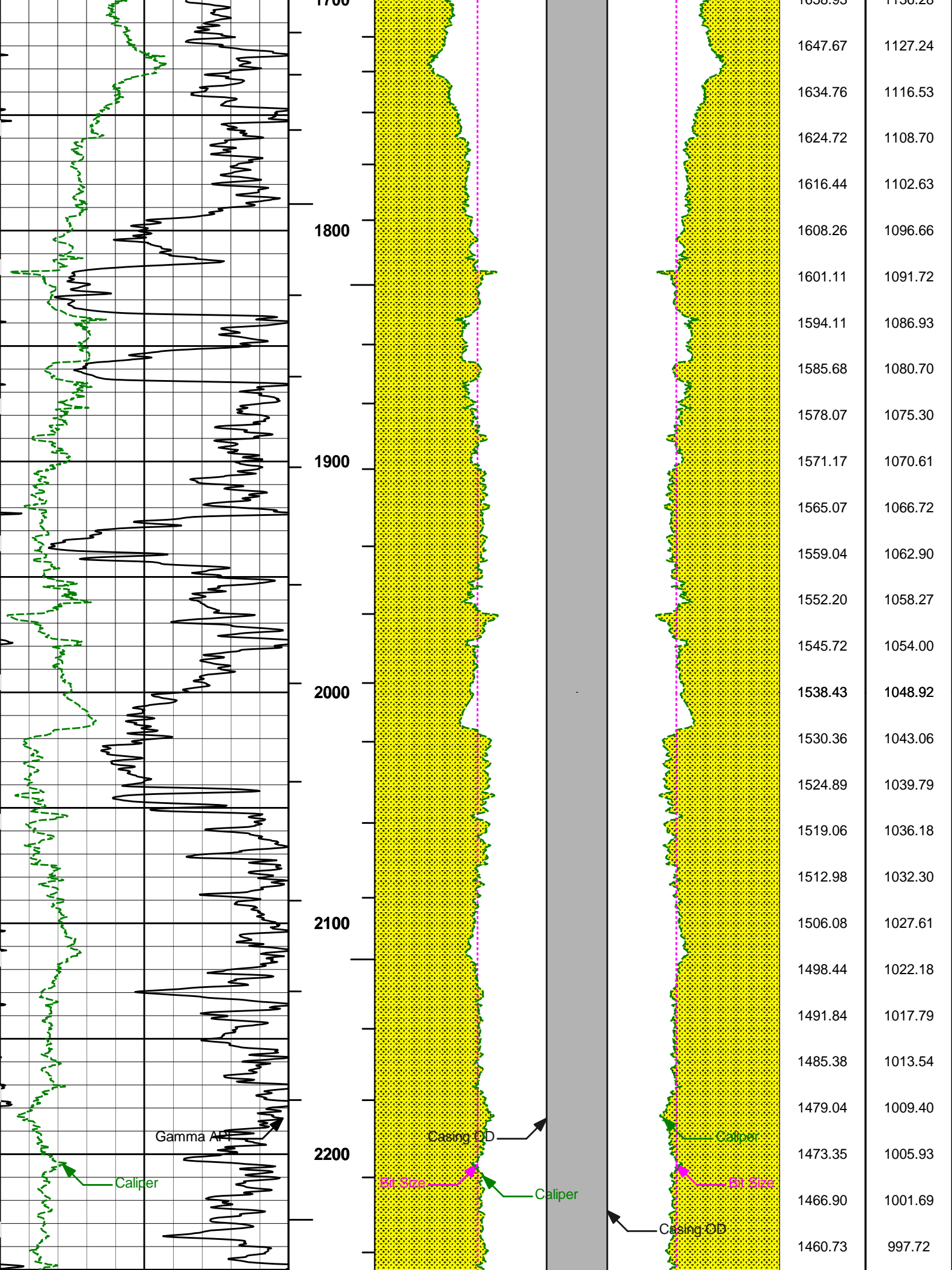
Fold here

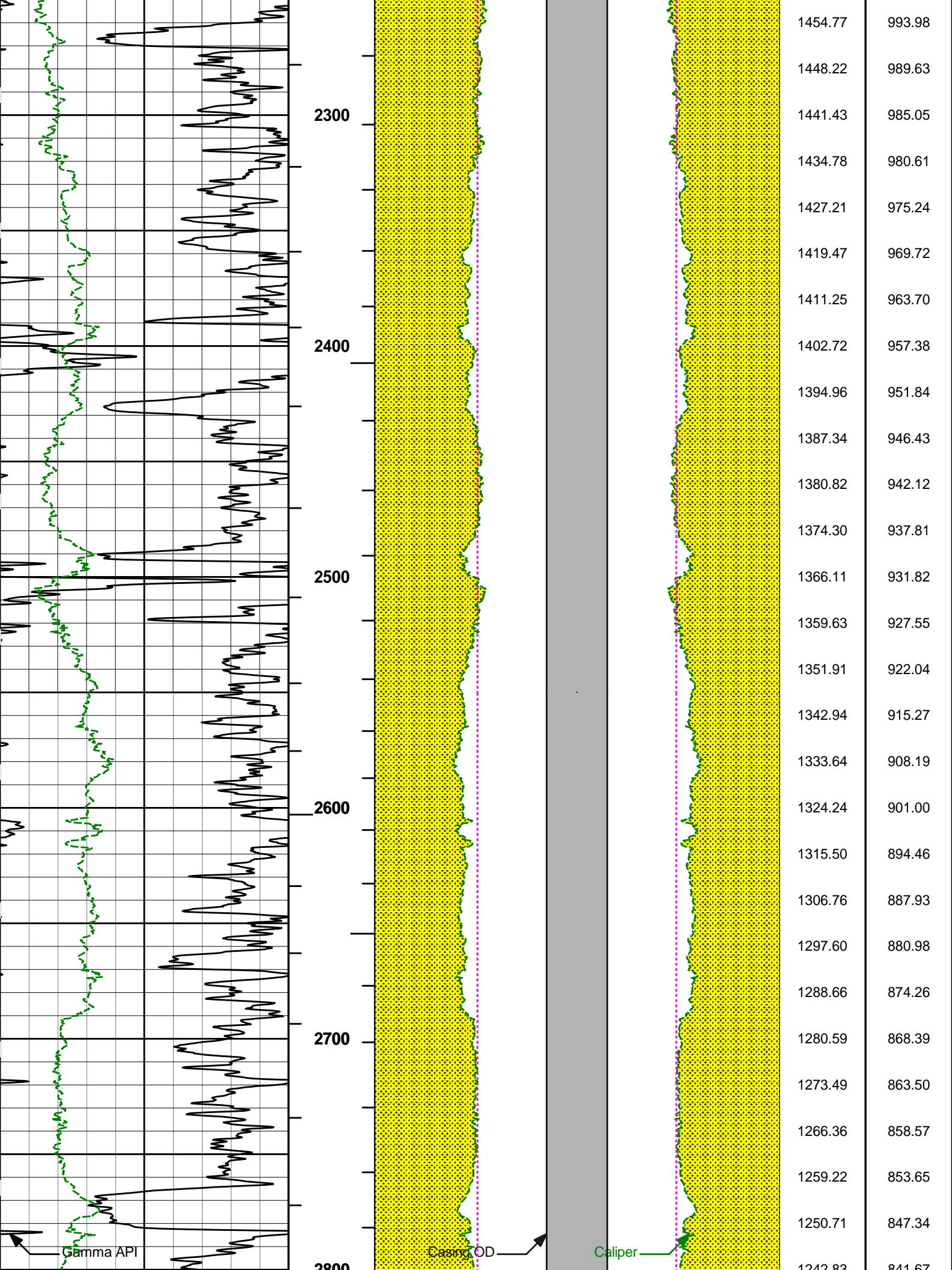
Service Ticket No.: 9086389						API Serial No.: 05077101600000						PGM Version: WL INSITE R3.4.2 (Build 2)											
CHANGE IN MUD TYPE OR ADDITIONAL SAMPLE												RESISTIVITY SCALE CHANGES											
Date		Sample No.										Type Log		Depth		Scale Up Hole				Scale Down Hole			
Depth-Driller																							
Type Fluid in Hole																							
Density		Viscosity																					
Ph		Fluid Loss																					
Source of Sample												RESISTIVITY EQUIPMENT DATA											
Rm @ Meas. Temp				@				@				Run No.		Tool Type & No.		Pad Type		Tool Pos.		Other			
Rmf @ Meas. Temp.				@				@				ONE		ACRT -		N/A		1.5" S.O.		N/A			
Rmc @ Meas. Temp.				@				@						E336_S042									
Source Rmf		Rmc																					
Rm @ BHT				@				@															
Rmf @ BHT				@				@															
Rmc @ BHT				@				@															
EQUIPMENT DATA																							
GAMMA				ACOUSTIC				DENSITY				NEUTRON											
Run No.		ONE		Run No.				Run No.		ONE		Run No.		ONE									
Serial No.		11016182		Serial No.				Serial No.		10733075		Serial No.		10839203									
Model No.		GTET		Model No.				Model No.		SDLT-I		Model No.		DSNT-I									
Diameter		3.625"		No. of Cent.				Diameter		4.5"		Diameter		3.625"									
Detector Model No.		102-A		Spacing				Log Type		GAM-GAM		Log Type		THERM-THERM									
Type		SCINT						Source Type		Cs137		Source Type		Am241Be									
Length		8"		LSA [Y/N]				Serial No.		5116GW		Serial No.		DSN-431									
Distance to Source		10'		FWDA [Y/N]				Strength		1.5 Ci		Strength		15.0 Ci									

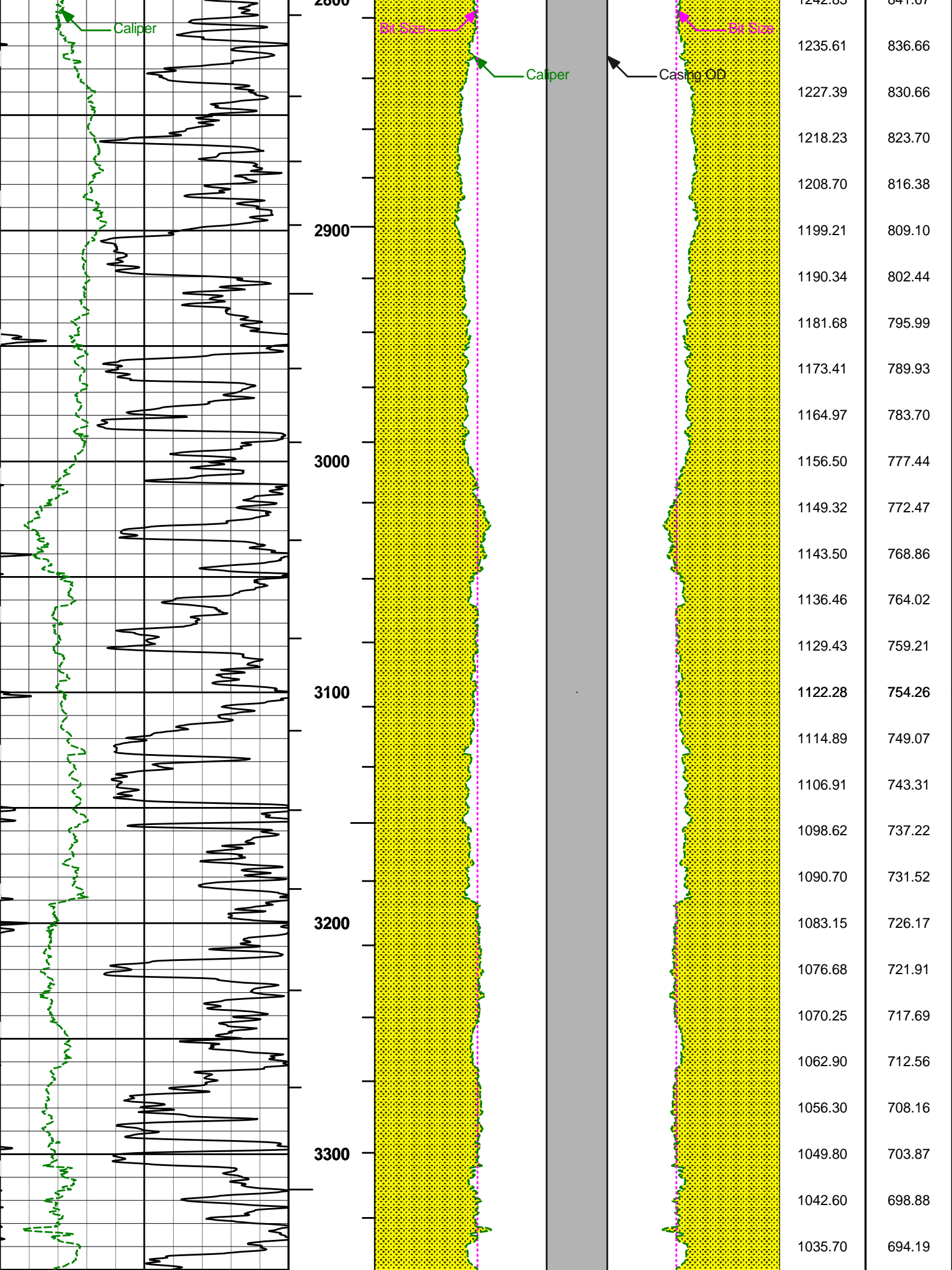
LOGGING DATA

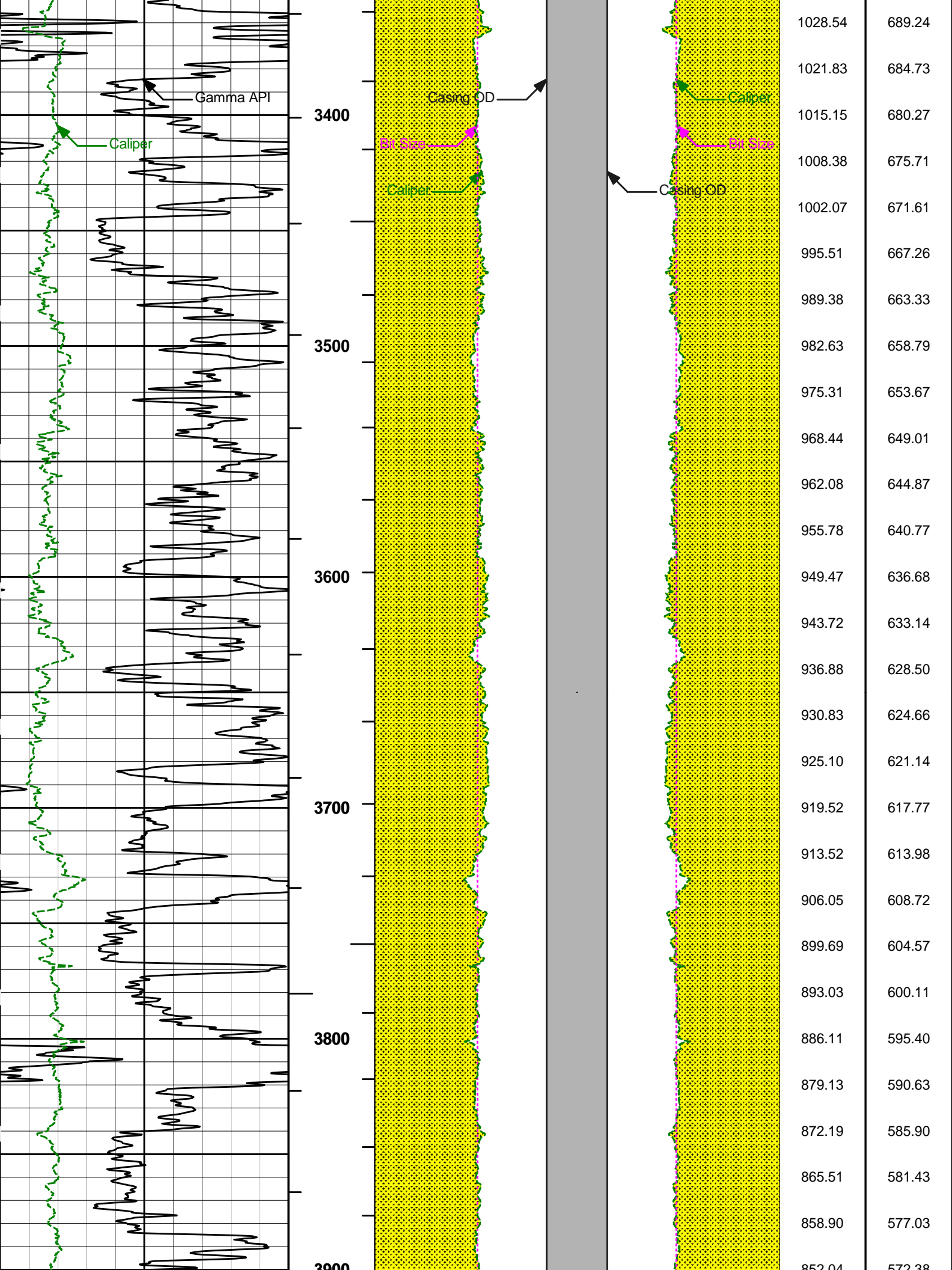
GENERAL			GAMMA			ACOUSTIC			DENSITY			NEUTRON		
---------	--	--	-------	--	--	----------	--	--	---------	--	--	---------	--	--

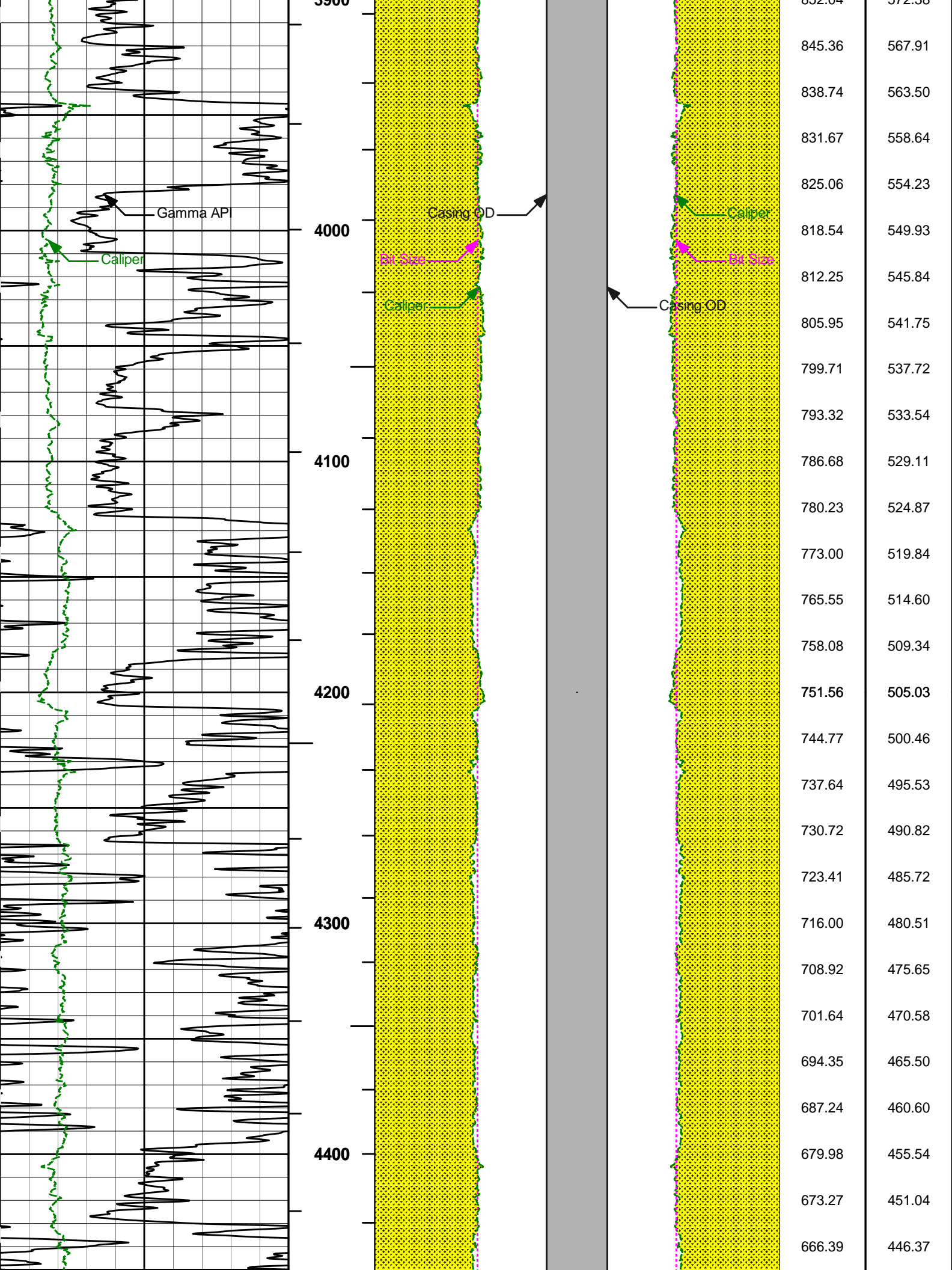


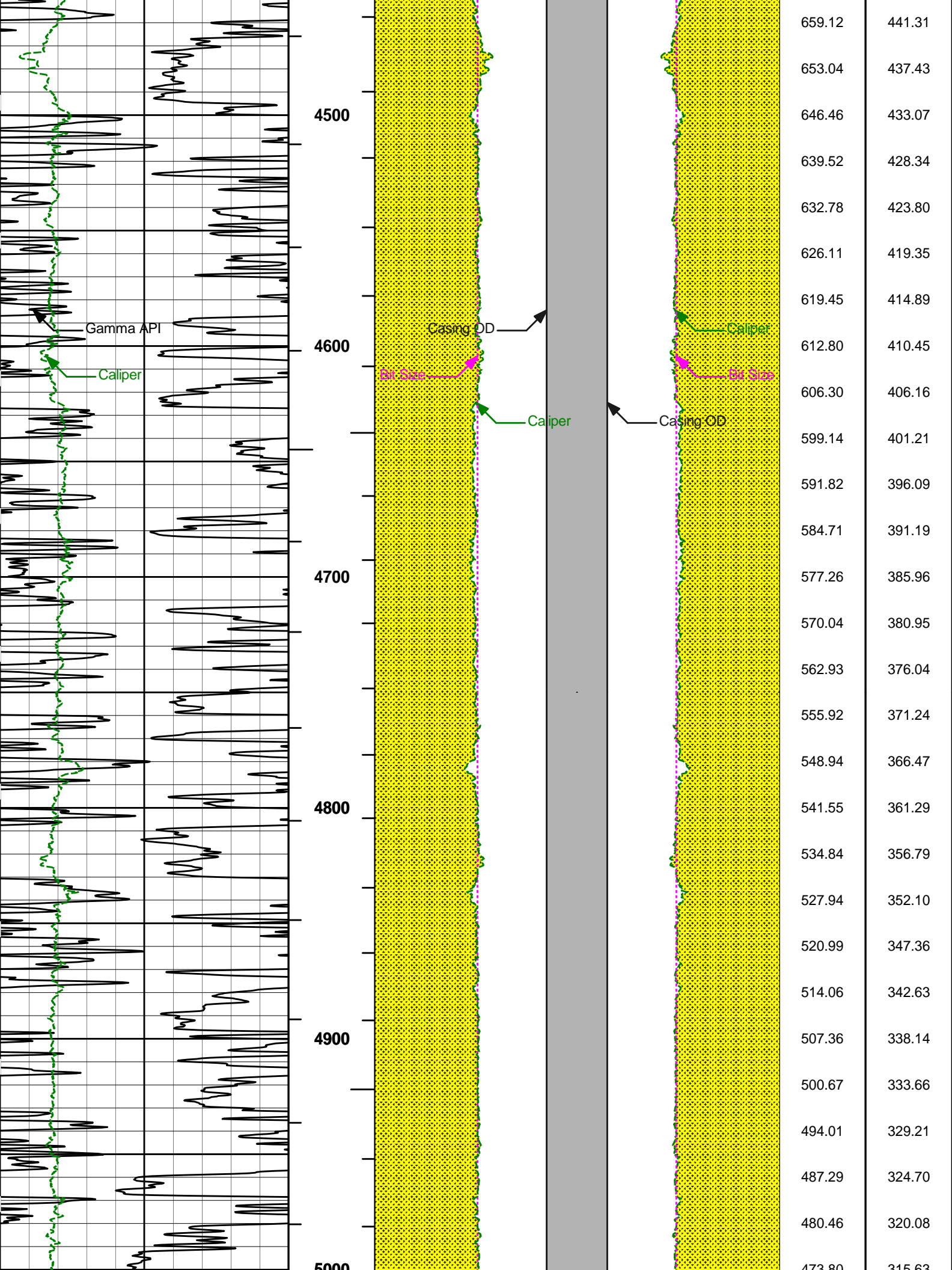


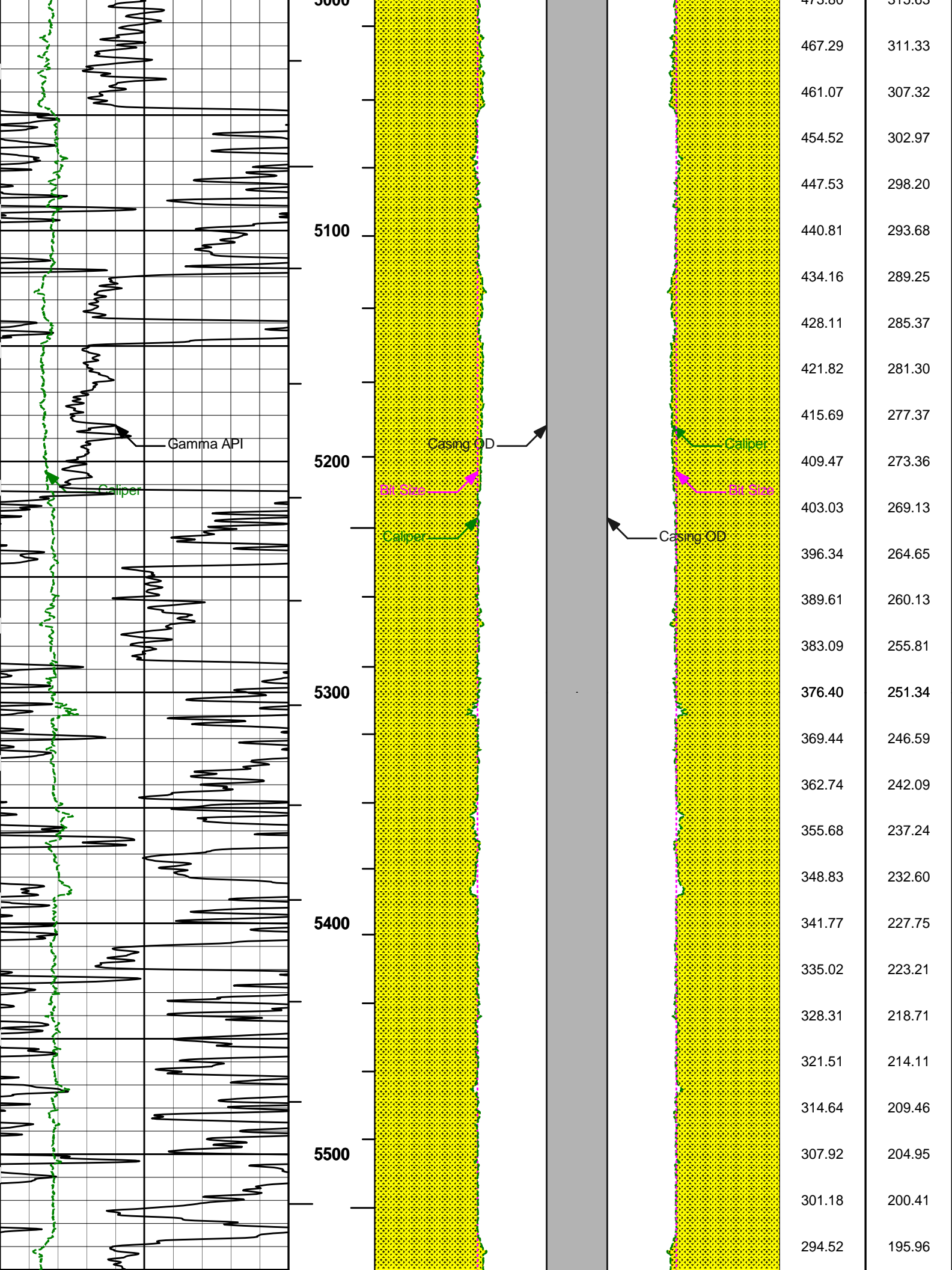


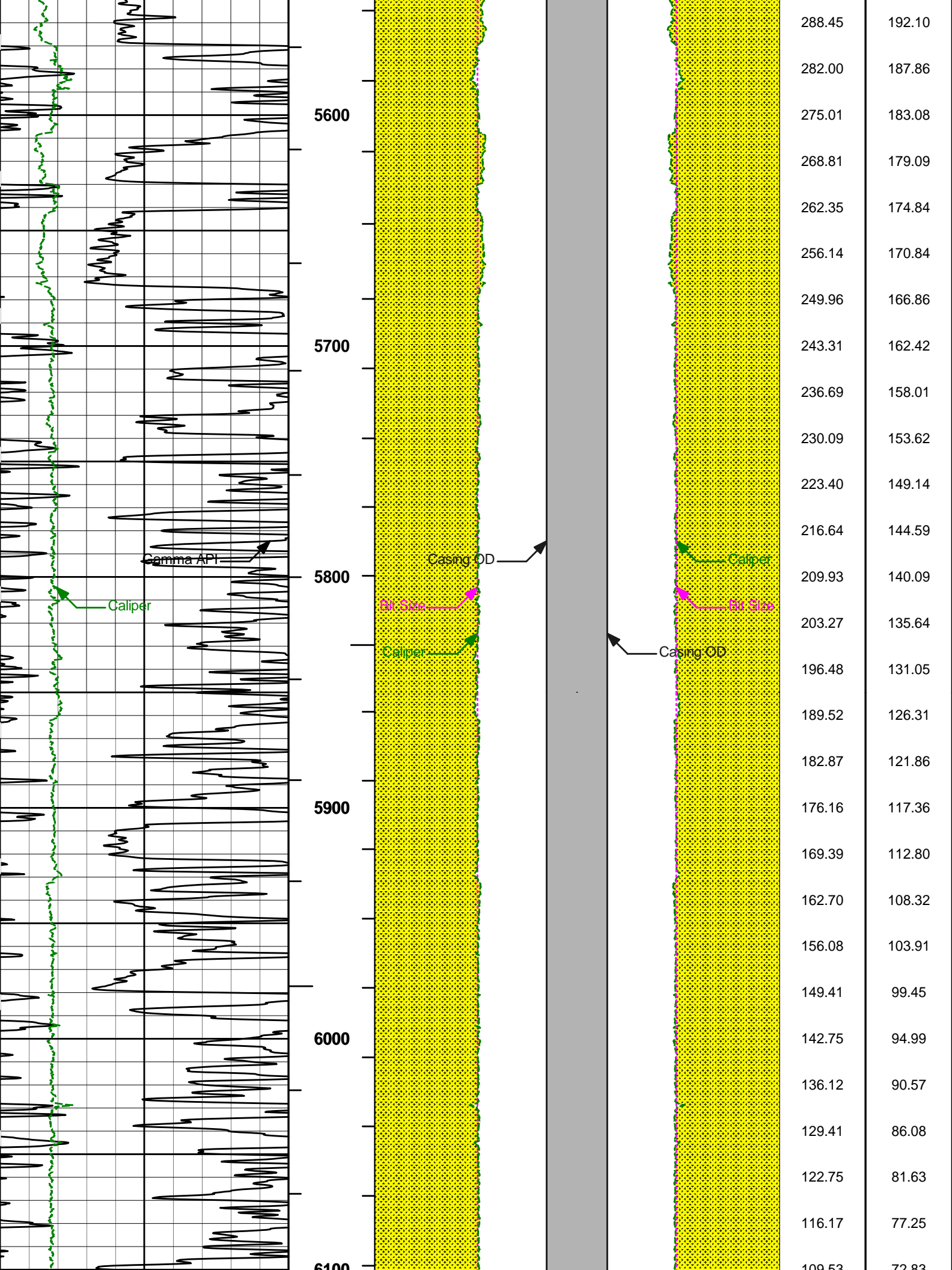


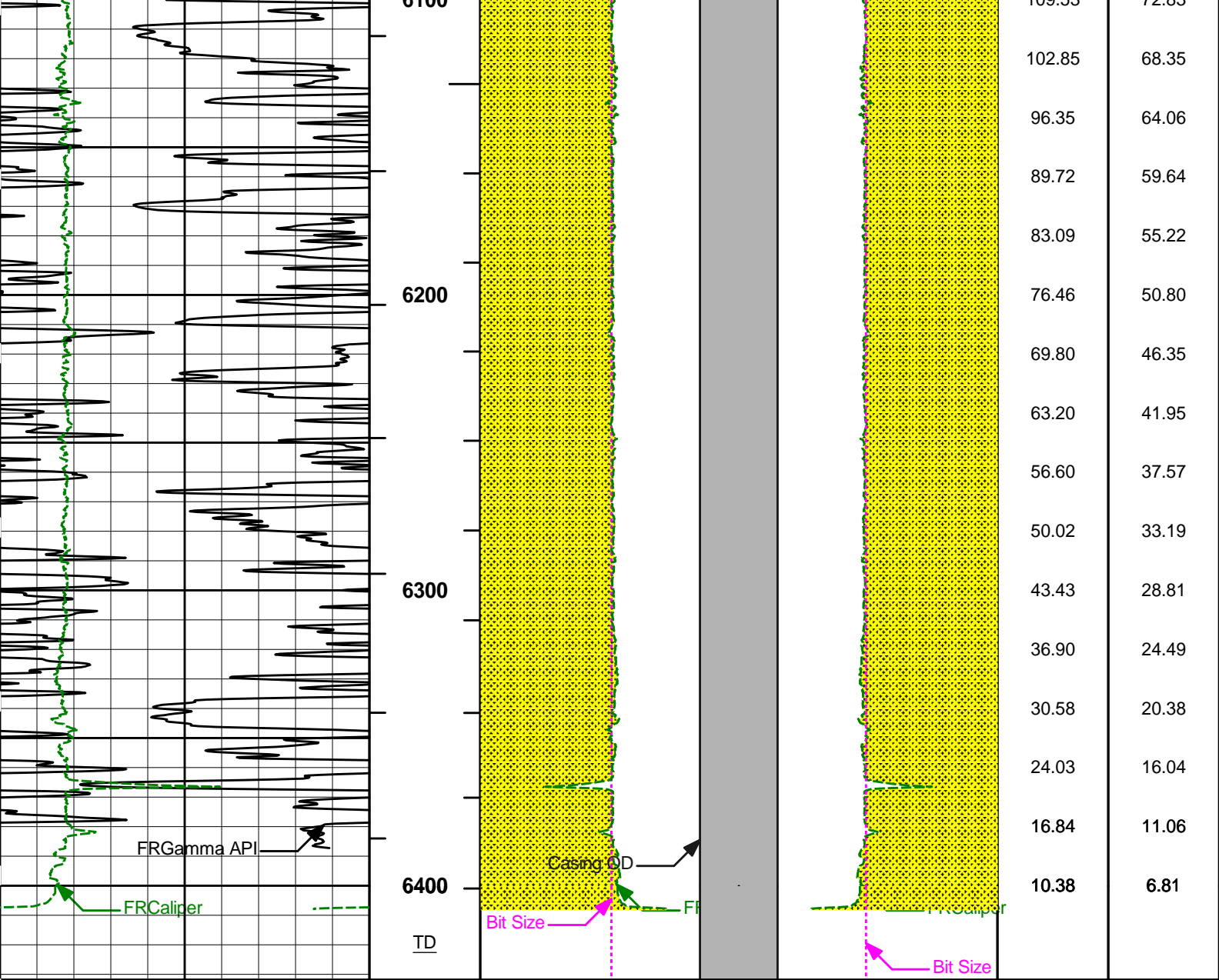












0	Gamma API	150	1 : 600	16	Caliper	0 0	Caliper	16	BHVT	AHVT
	api				inches		inches			
6	Caliper	16	BHVT		Casing OD		Casing OD			
	inches									
			AHVT	16	Bit Size	0 0	Bit Size	16		
					inches		inches			

HALLIBURTON

Plot Time: 28-Nov-11 09:10:00
 Plot Range: 1578 ft to 6431.83 ft
 Data: LE_HWXST_17_03C\Well Based\MAIN*
 Plot File: \\BHV\IQ_BHV_SDL_RM

AHV USES 4.5" CASING

FIELD	BRUSH CREEK		
COUNTY	MESA	STATE	COLORADO
HALLIBURTON		BOREHOLE VOLUME PLOT	