

HALLIBURTON

BOREHOLE VOLUME PLOT

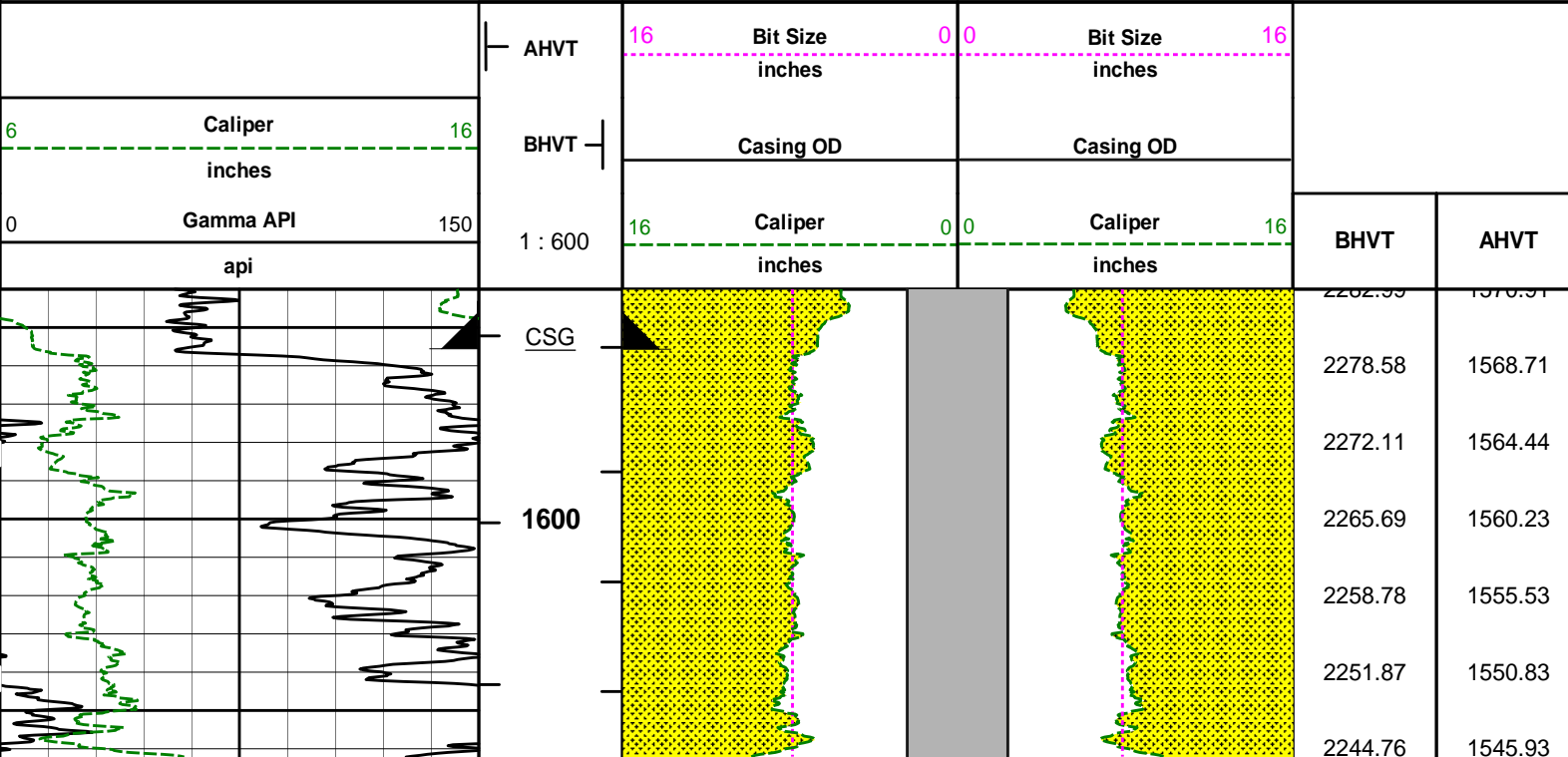
COMPANY		LARAMIE ENERGY	
WELL		BRUTON 30-06-B	
FIELD		BRUSH CREEK	
COUNTY		GARFIELD	
STATE		CO	
Permanent Datum Log measured from Drilling measured from	GL	Elev. 7650.0 ft	
	KB	Elev. 7671.0 ft	
	KB	D.F. 7670.0 ft	
	KB	G.L. 7650.0 ft	
Date		12-Feb-12	
Run No.		ONE	
Depth - Driller		7975.00 ft	
Depth - Logger		7978.0 ft	
Bottom - Logged Interval		7955.0 ft	
Top - Logged Interval		1556.0 ft	
Casing - Driller		8.625 in @ 1560.0 ft	
Casing - Logger		1556.0 ft	
Bit Size		7.875 in @	
Type Fluid in Hole		WBM	
Density		9.7 ppq	
Viscosity		58.00 s/qt	
PH		9.20 pH	
Fluid Loss		6.8 cpm	
Source of Sample		MUD TANK	
Rm @ Meas. Temperature		1.350 ohmm @ 59.30 degF	
Rmf @ Meas. Temperature		0.93 ohmm @ 75.00 degF	
Rmc @ Meas. Temperature		0.980 ohmm @ 75.00 degF	
Source Rmf		CHART	
Rm @ BHT		0.54 ohmm @ 185.0 degF	
Time Since Circulation		12.8 hr	
Time on Bottom		12-Feb-12 22:19	
Max. Rec. Temperature		185.0 degF @ 7978.0 ft	
Equipment		11362840	
Location		ROCK SPRING	
Recorded By		B. PEDERSEN	
Witnessed By		K. CLAUSEN	

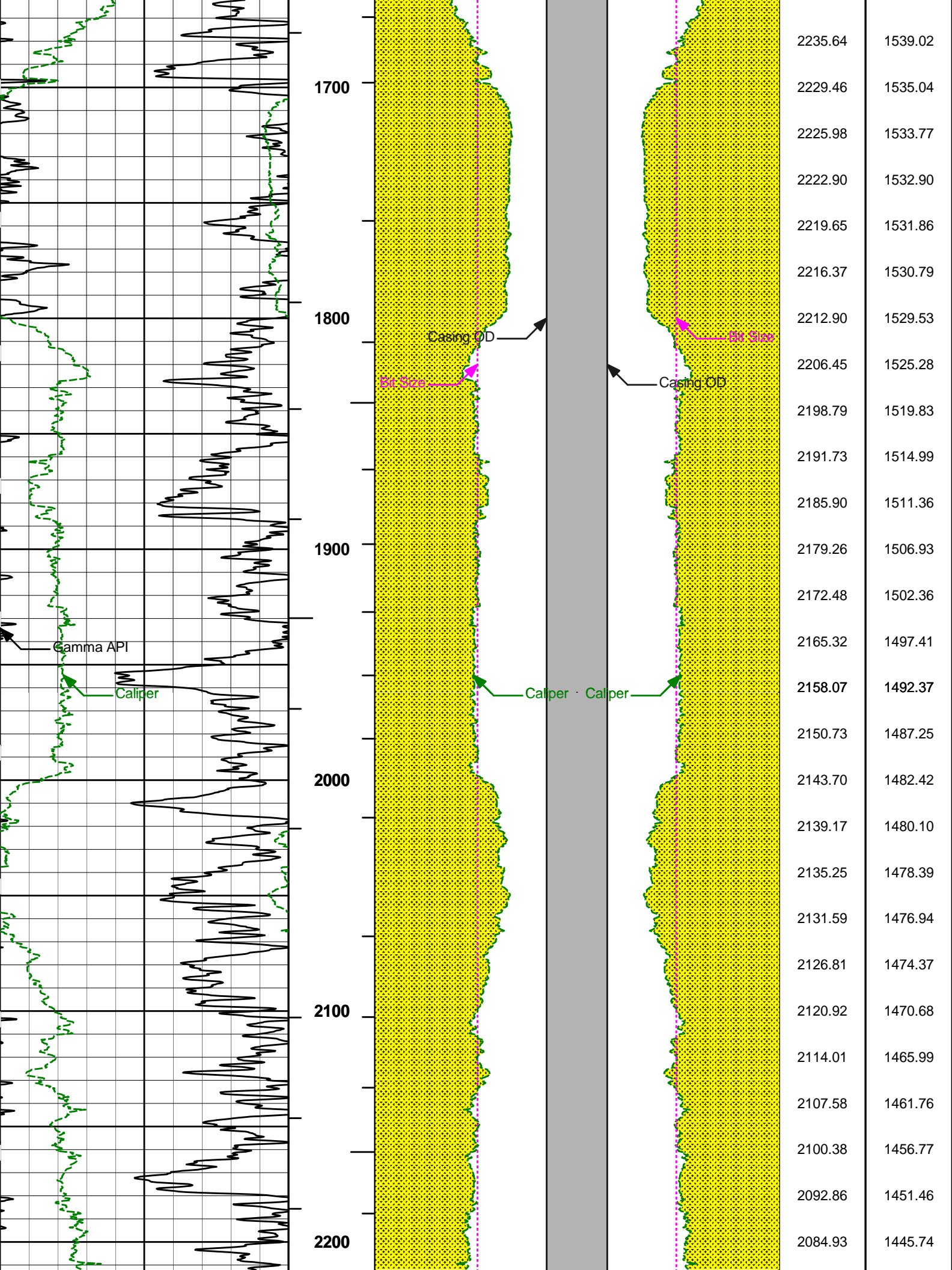
Fold here

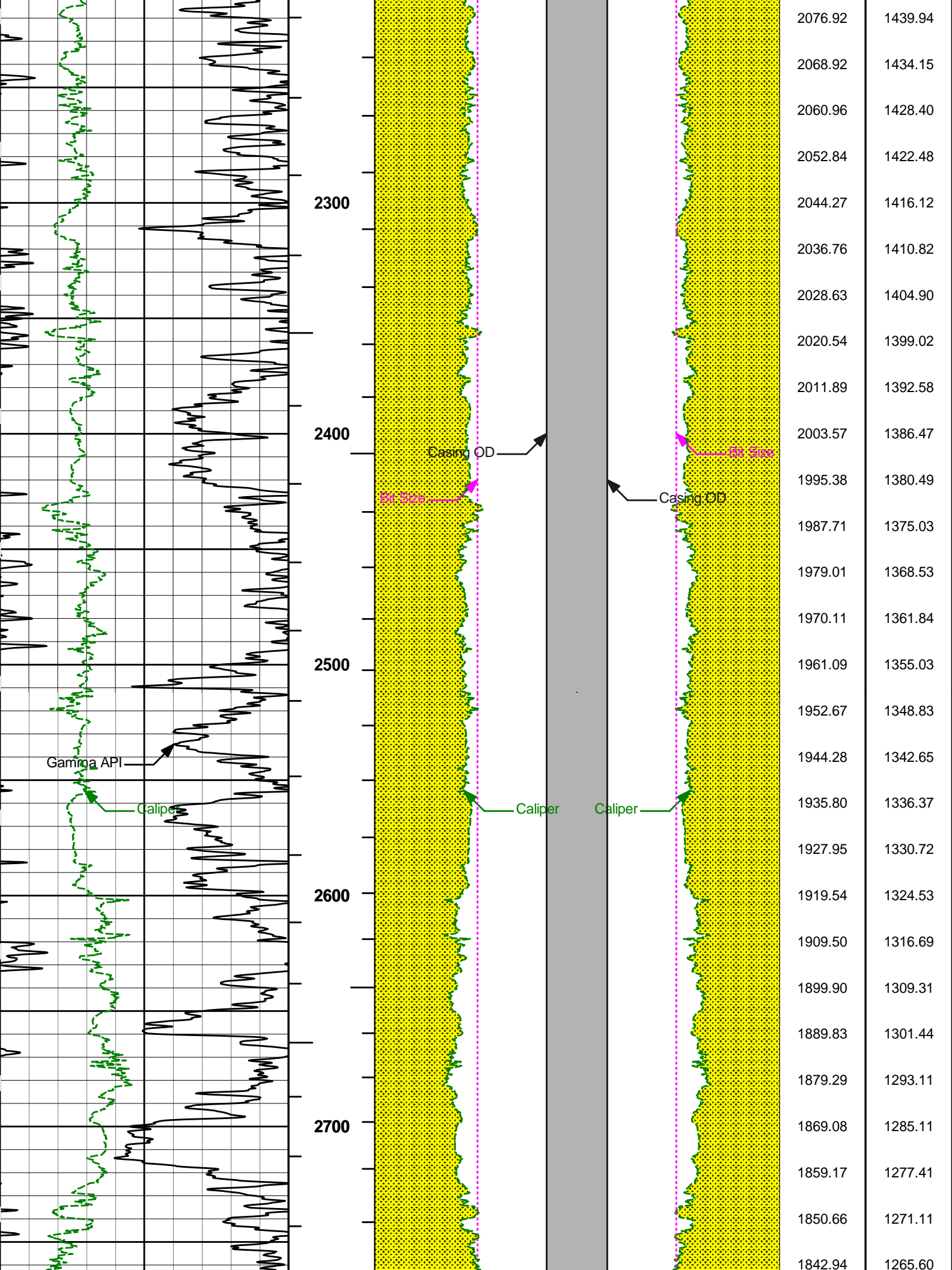
Service Ticket No.: 9254976						API Serial No.: 05077101040000						PGM Version: WL INSITE R3.4.2 (Build 2)															
CHANGE IN MUD TYPE OR ADDITIONAL SAMPLE												RESISTIVITY SCALE CHANGES															
Date		Sample No.										Type Log		Depth		Scale Up Hole				Scale Down Hole							
Depth-Driller																											
Type Fluid in Hole																											
Density		Viscosity																									
Ph		Fluid Loss																									
Source of Sample												RESISTIVITY EQUIPMENT DATA															
Rm @ Meas. Temp				@				@				Run No.		Tool Type & No.		Pad Type		Tool Pos.				Other					
Rmf @ Meas. Temp.				@				@				ONE		ACRT		N/A		0" S.O.				N/A					
Rmc @ Meas. Temp.				@				@						E171_S970													
Source Rmf		Rmc																									
Rm @ BHT				@				@																			
Rmf @ BHT				@				@																			
Rmc @ BHT				@				@																			
EQUIPMENT DATA																											
GAMMA						ACOUSTIC						DENSITY						NEUTRON									
Run No.		ONE				Run No.						Run No.		ONE				Run No.		ONE							
Serial No.		11016182				Serial No.						Serial No.		10948155				Serial No.		11004663							
Model No.		GTET				Model No.						Model No.		SDLT-I				Model No.		DSNT-I							
Diameter		3.625"				No. of Cent.						Diameter		4.5"				Diameter		3.625"							
Detector Model No.		102-A				Spacing						Log Type		GAM-GAM				Log Type		THERM-THERM							
Type		SCINT										Source Type		Cs137				Source Type		Am241Be							
Length		8"				LSA [Y/N]						Serial No.		5116GW				Serial No.		DSN-431							
Distance to Source		10'				FWDA [Y/N]						Strength		1.5 Ci				Strength		15 Ci							

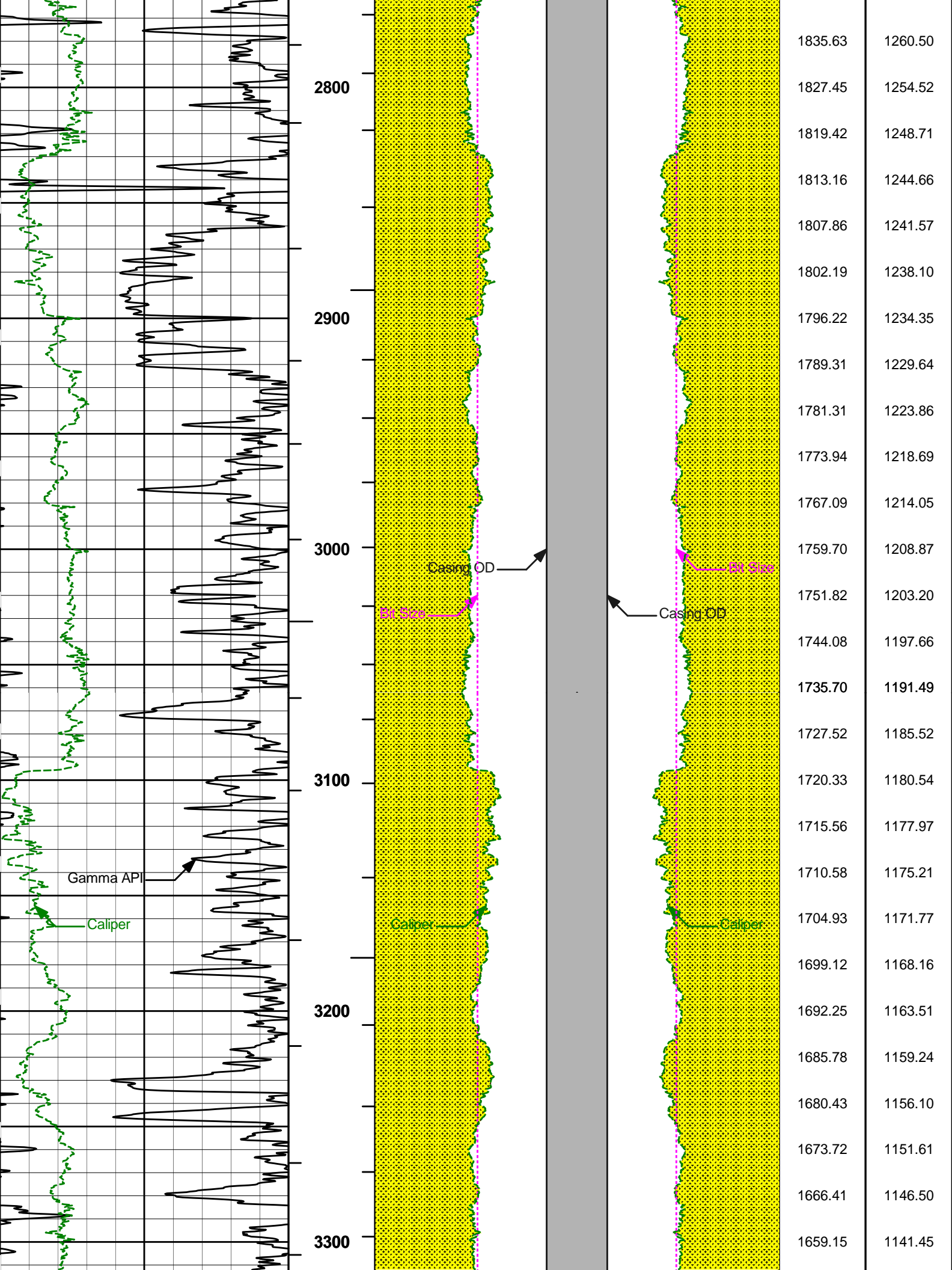
LOGGING DATA

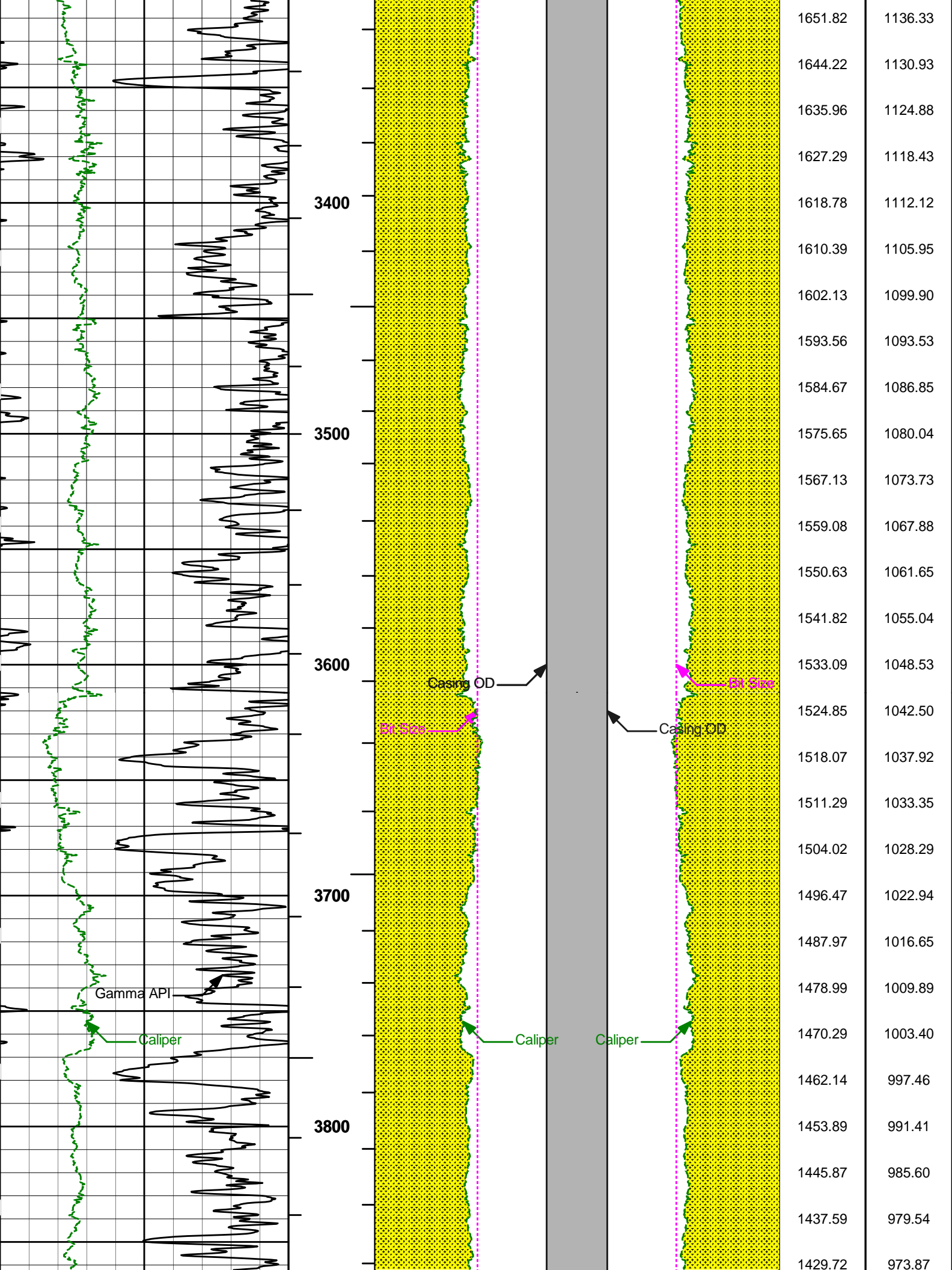
GENERAL	GAMMA	ACOUSTIC	DENSITY	NEUTRON
---------	-------	----------	---------	---------

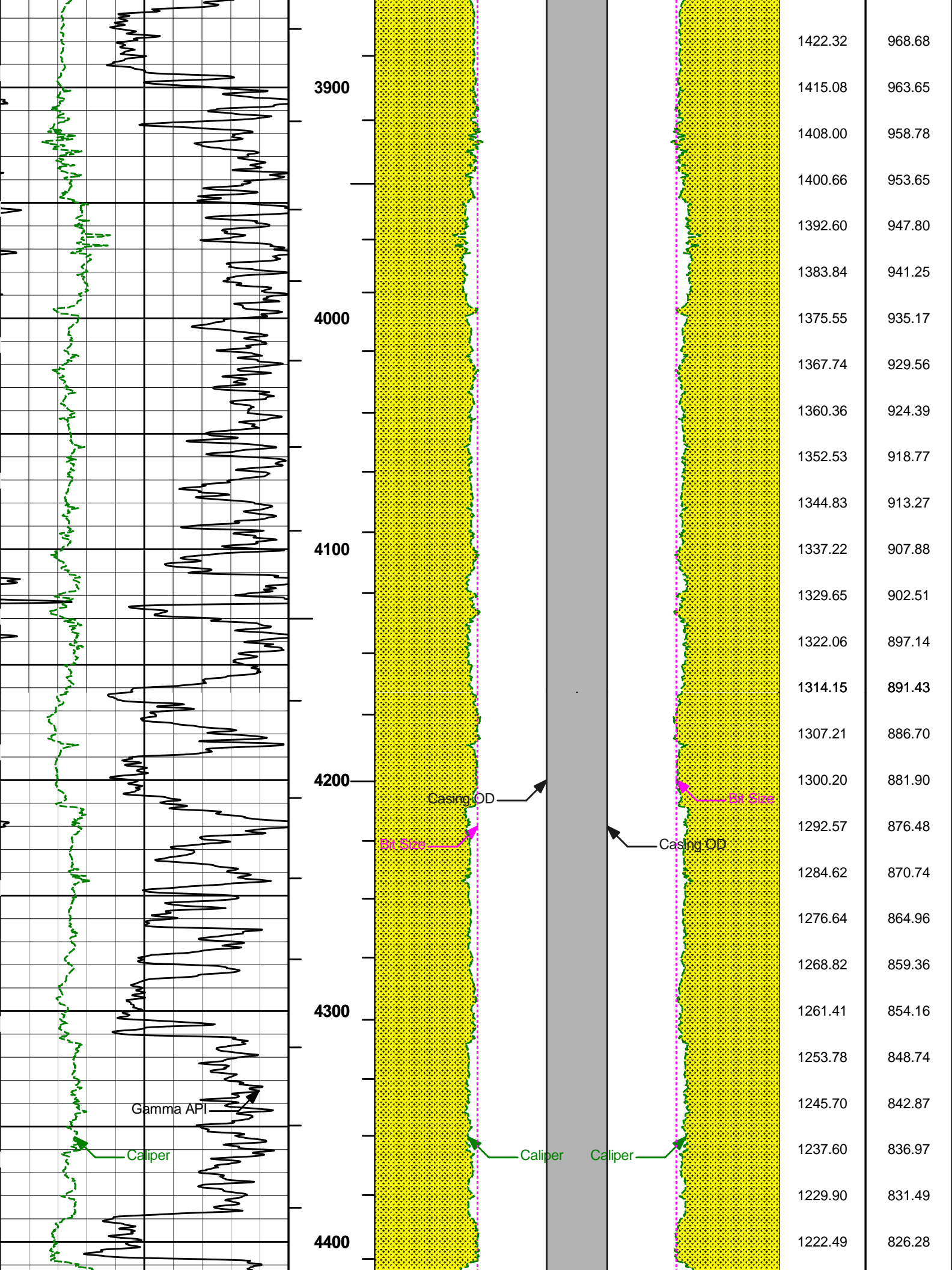


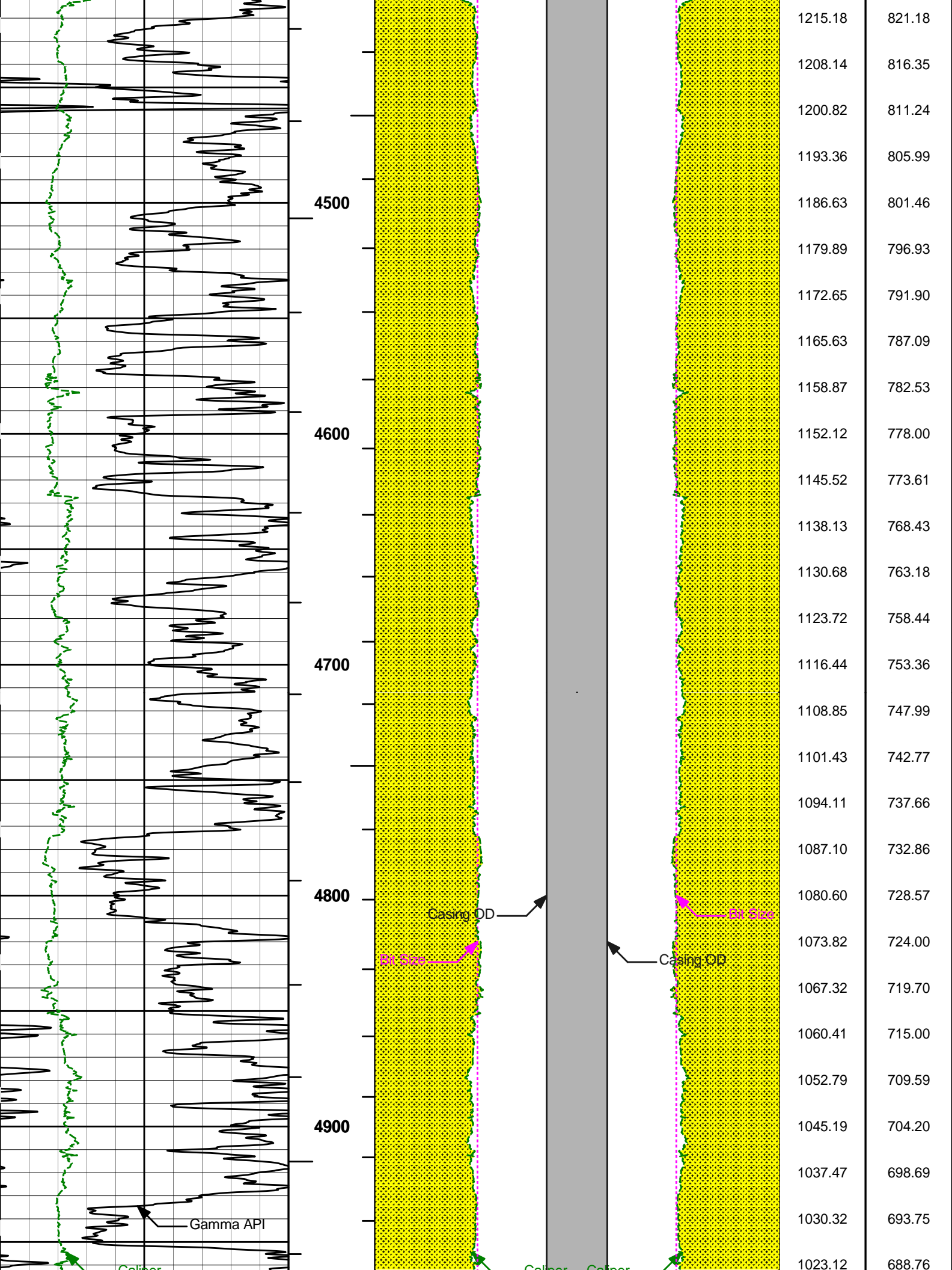


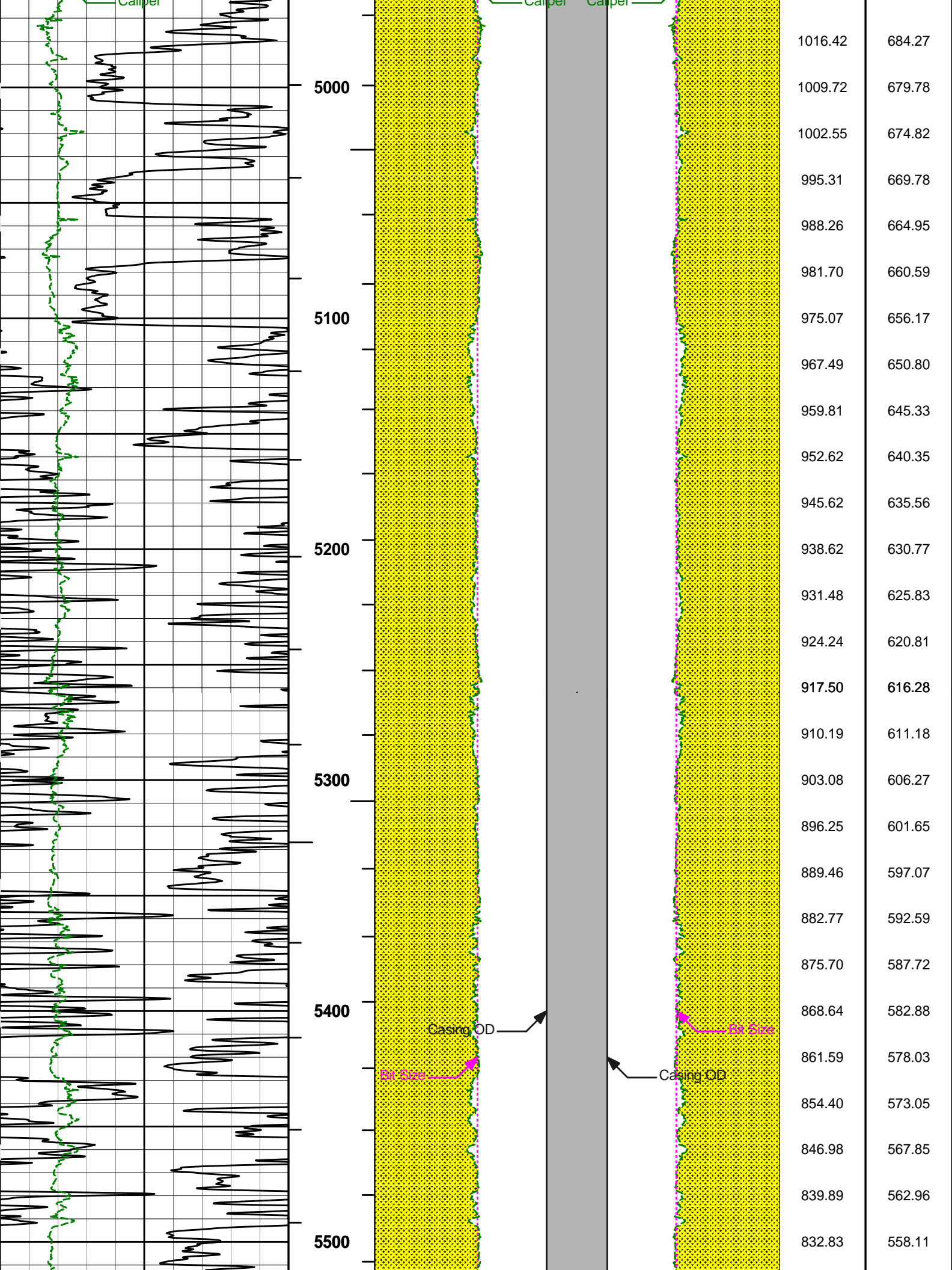


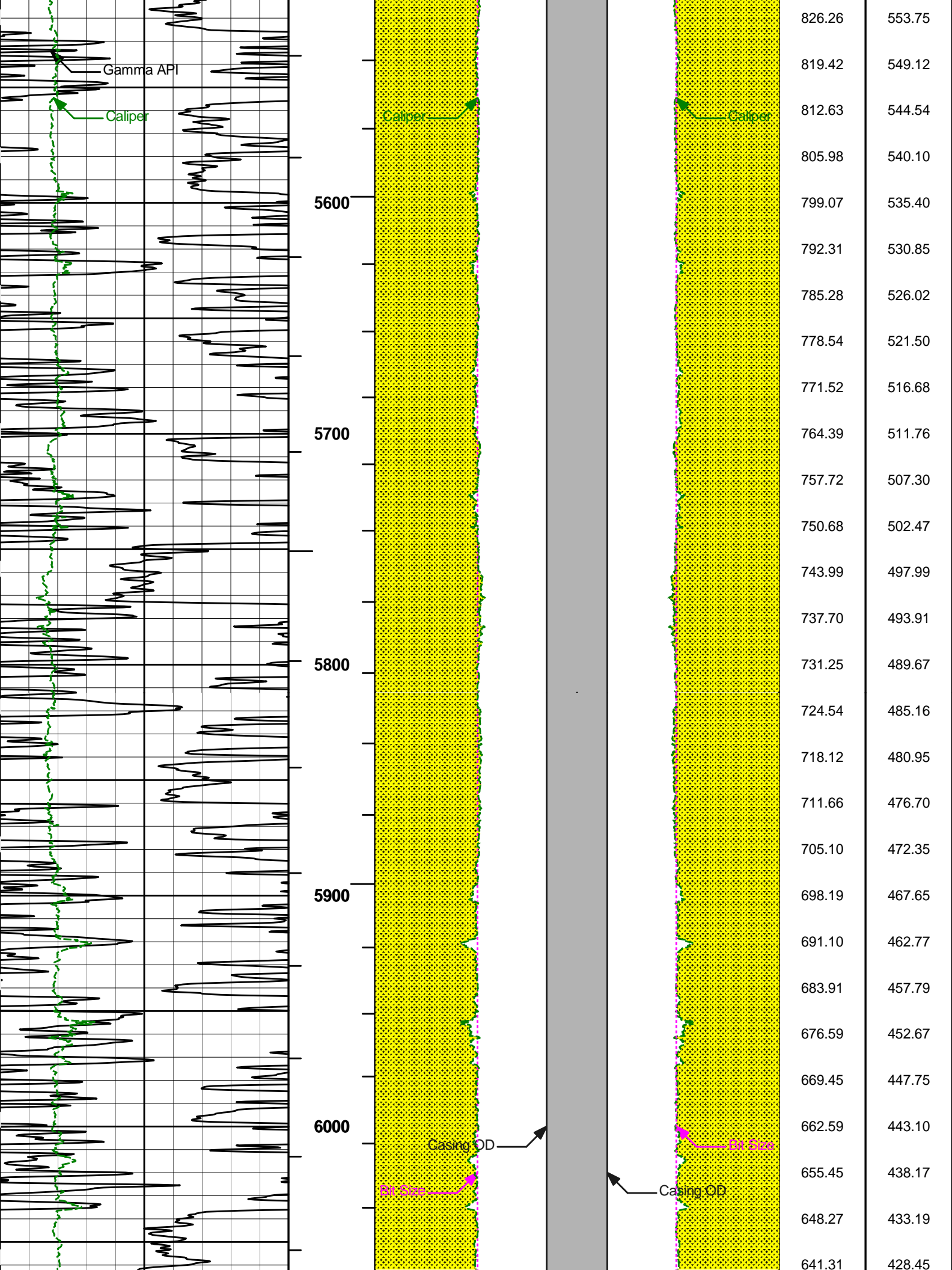


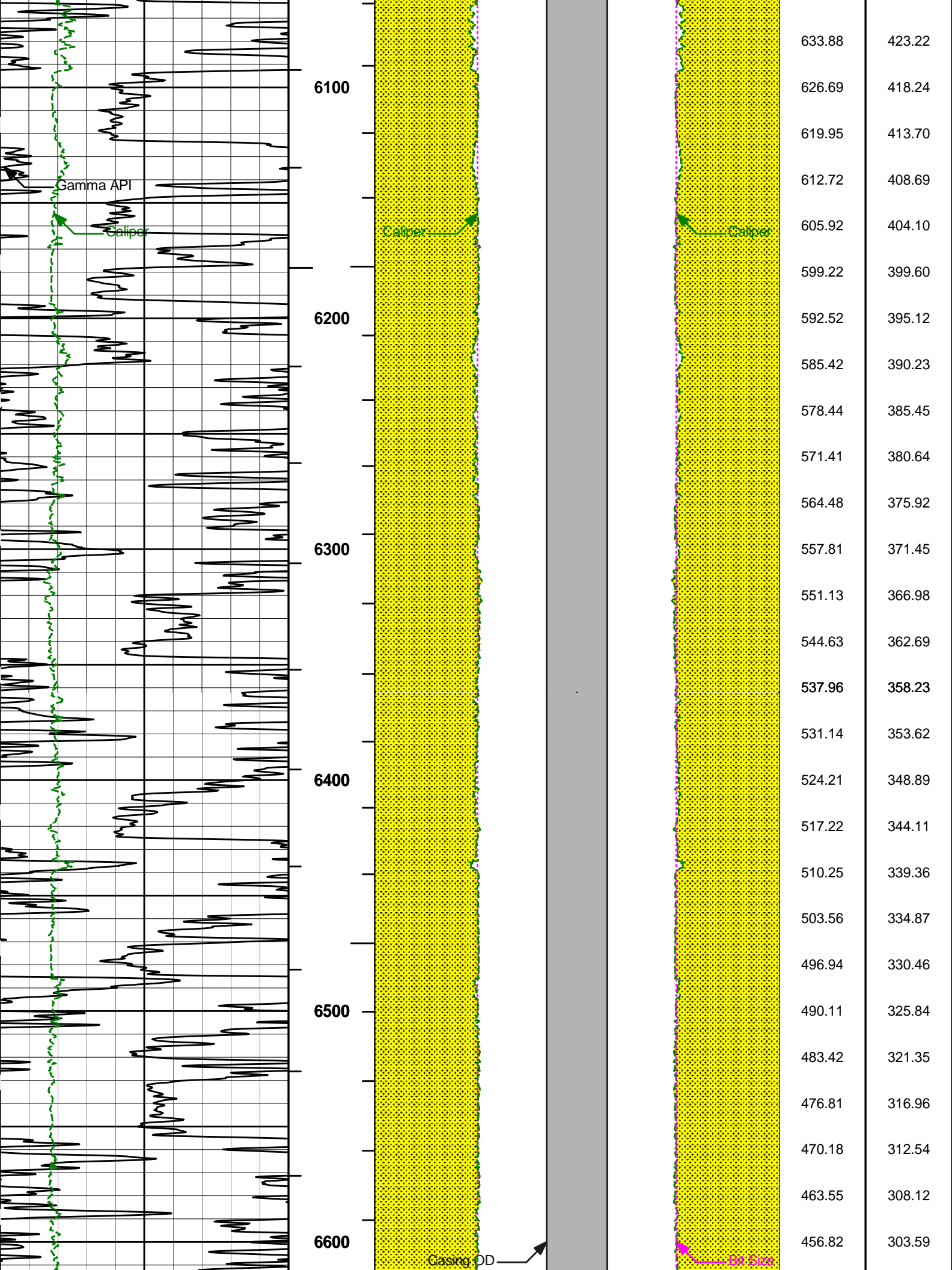


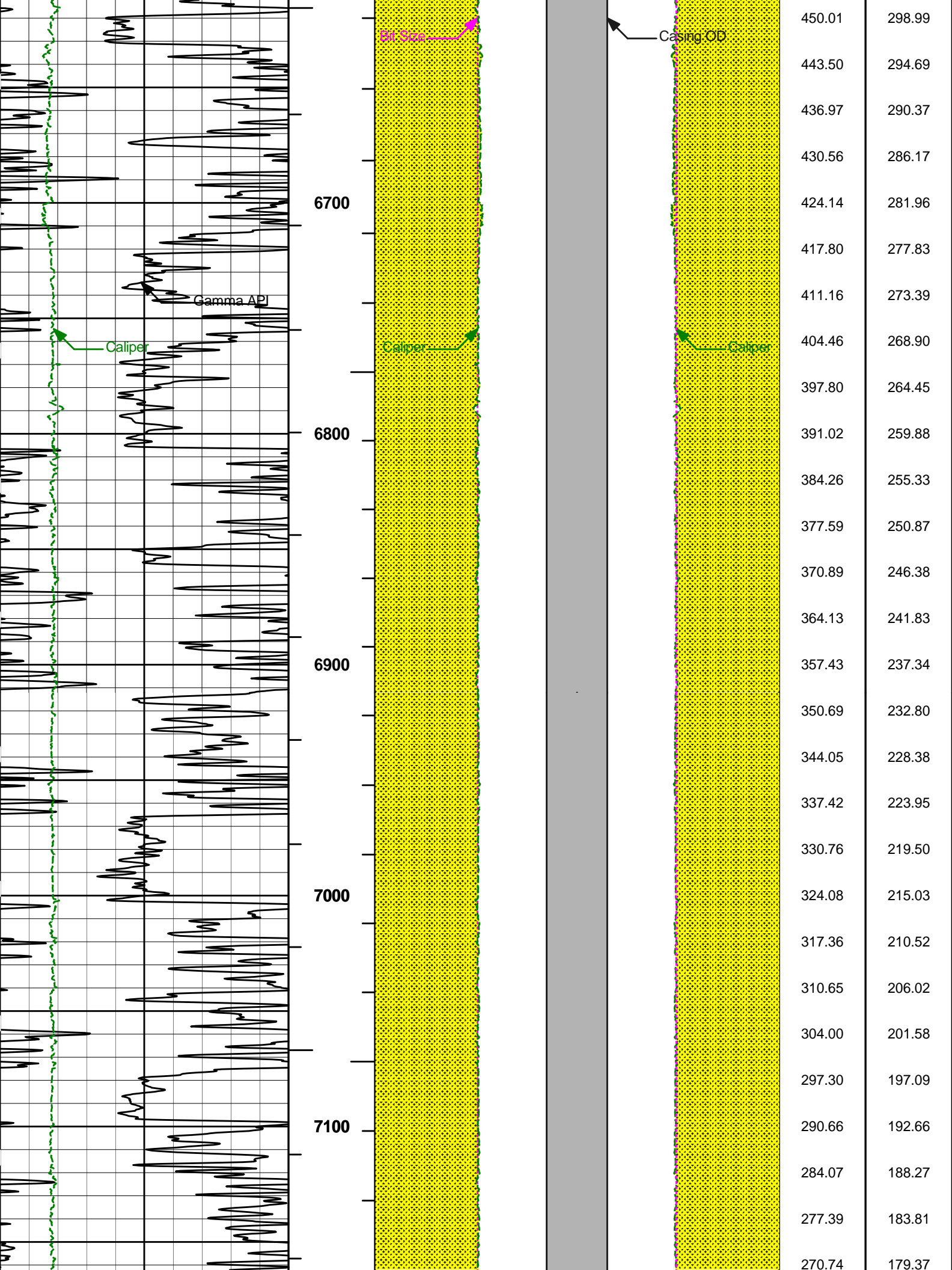


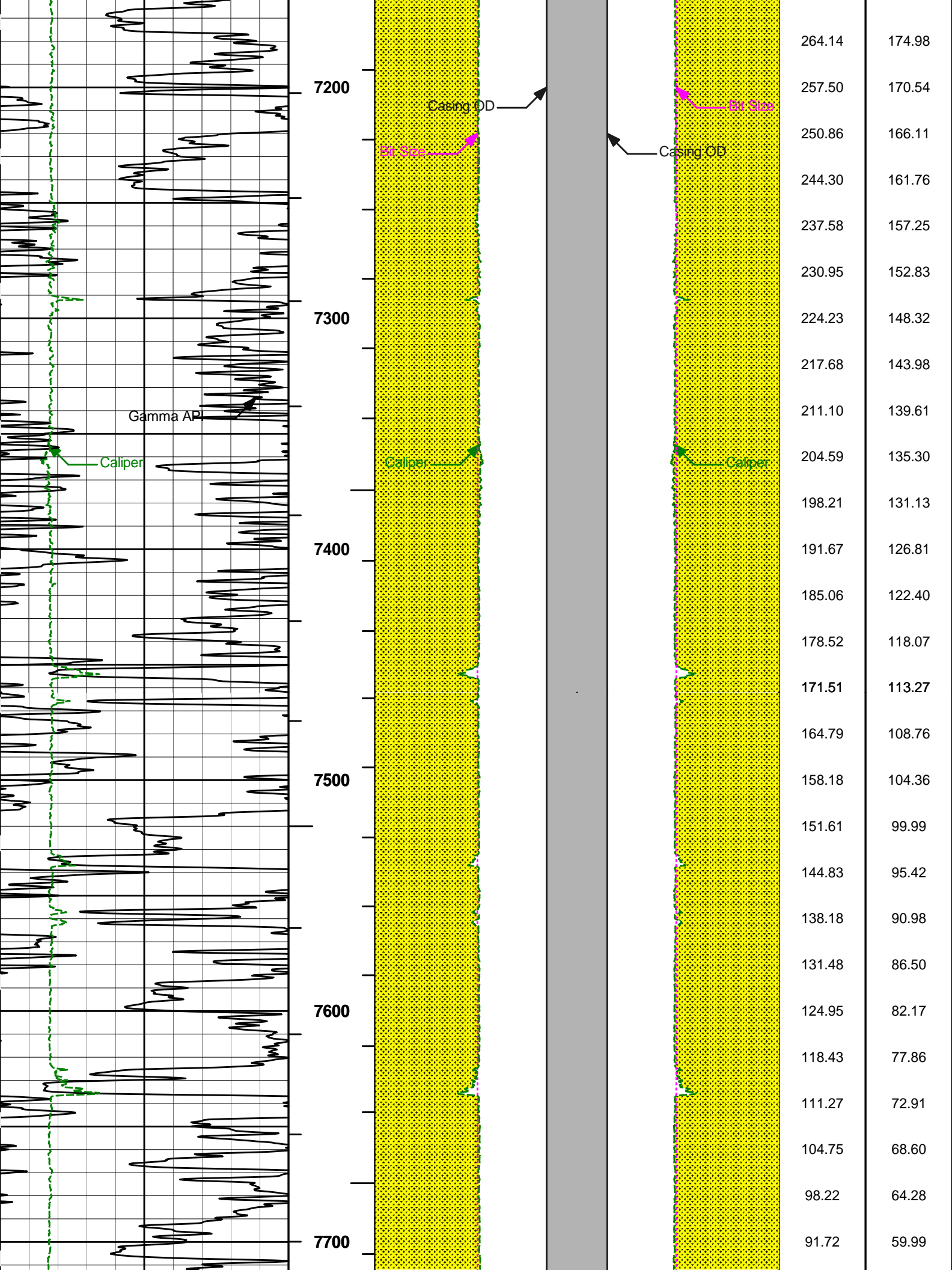


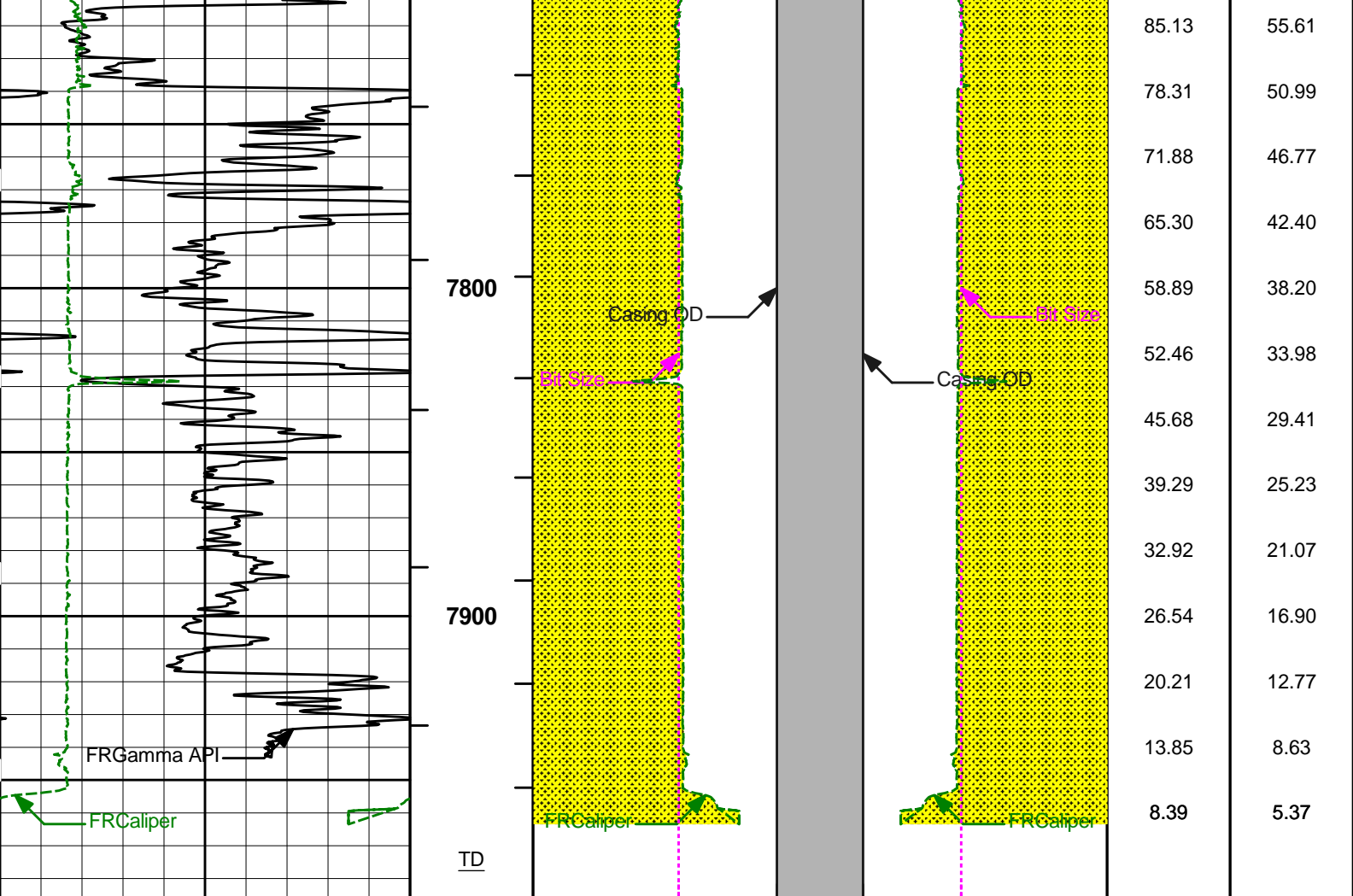












0	Gamma API	150	1 : 600	16	Caliper	0	0	Caliper	16	BHVT	AHVT
	api				inches			inches			
6	Caliper	16	BHVT		Casing OD			Casing OD			
	inches										
			AHVT	16	Bit Size	0	0	Bit Size	16		
					inches			inches			

HALLIBURTON

Plot Time: 13-Feb-12 00:24:36
Plot Range: 1540 ft to 7986.5 ft
Data: {ActiveWell}\Well Based\MAIN*
Plot File: \\BHV\IQ_BHV_SDL_RM

AHV USES 4.5" CASING

COMPANY	LARAMIE ENERGY
WELL	BRUTON 30-06-B
FIELD	BRUSH CREEK
COUNTY	GARFIELD
STATE	CO

