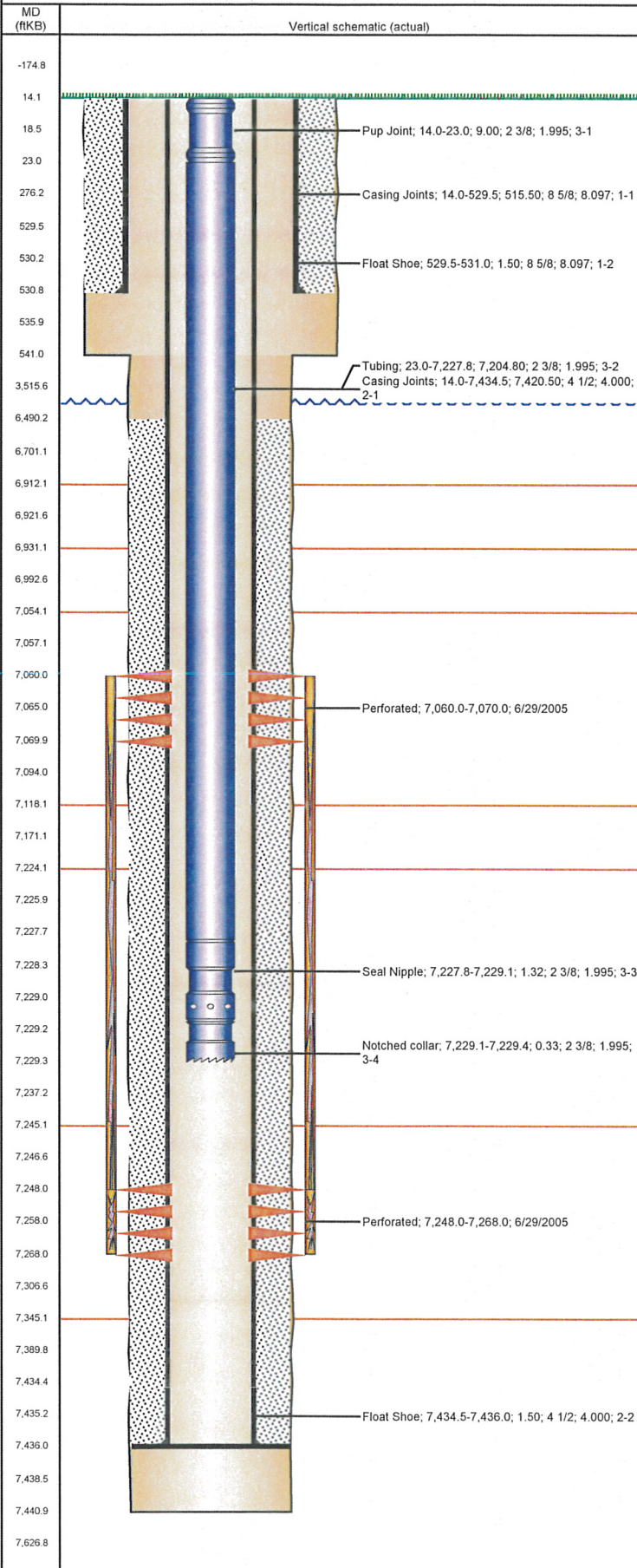


Well Name: EDWARDS 32-15

VERTICAL - ORIGINAL HOLE, 8/6/2012 3:05:14 PM



Well Header

API	Business Unit	District	Well Config
05-123-22917	WATTENBERG	15	VERTICAL
Original KB Elevation (ft)	KB - GL / MSL (ftKB)	Spud Date	P & A Date
5,028.00	14.00	6/15/2005	

Comment

C/N FRAC'D LIMITED ENTRY

Directions To Well

HWY 34 & HWY 257, SOUTH 0.2, WEST 0.2 INTO.

Current PBTD (ftKB)

ORIGINAL HOLE - 7,436.0

Surface Location (Congressional)

Quarter 1	Quarter 2	Quarter 3	Quarter 4	Section	Township	Twnshp N...	Range	Rng E/W Dir
		SW	NE	15	5	N	67	W

Bottom Hole Location

North-South Distance (ft)	From N or S Line	East-West Distance (ft)	From E or W Line

Plug Back Total Depths

Date	Depth (ftKB)	Method	Com
6/20/2005	7,418.0	CASING TALLY	ORIGINAL PBTD; LATCH DOWN COLLAR
6/29/2005	7,418.0	CASED HOLE LOG	DEPTH LOGGER

Wellbore Sections

Section Des	Size (in)	Act Top (ftKB)	Act Btm (ftKB)
SURFACE	12 1/4	14.0	541.0
PRODUCTION	7 7/8	541.0	7,441.0

Zone Statuses

Zone Name	Status Date	Status	Job
NIOBRARA	7/24/2005	PR	DRILLING/COMPLETION - ORIGINAL, 6/15/2005 00:00
CODELL	7/24/2005	PR	DRILLING/COMPLETION - ORIGINAL, 6/15/2005 00:00
CODELL	4/30/2012	PR	RE-FRAC, 3/6/2012 06:00

Casing Strings

Csg Des	Run Date	OD (in)	Wt/Len (lb/ft)	Grade	Top (ftKB)	Set Depth (ftKB)
Surface	6/16/2005	8 5/8	24.00	J-55	14.0	531.0
Production	6/19/2005	4 1/2	11.60	N-80	14.0	7,436.0

Cement

Des	Top (ftKB)	Btm (ftKB)
SURFACE CASING CEMENT	14.0	531.0
PRODUCTION CASING CEMENT	6,490.0	7,436.0

Tubing Components

Item Des	OD (in)	Wt (lb/ft)	Grade	Jts	Len (ft)
Pup Joint	2 3/8	4.70	N-80	1	9.00
Tubing	2 3/8	4.70	N-80	232	7,204.80
Seal Nipple	2 3/8	4.70	N-80	1	1.32
Notched collar	2 3/8	4.70	N-80	1	0.33

Perforation Data

Zone	Bnch/St g	Entered Shot Total	Top (ftKB)	Btm (ftKB)	Date
NIOBRARA, ORIGINAL HOLE		40	7,060.0	7,070.0	6/29/2005
CODELL, ORIGINAL HOLE		80	7,248.0	7,268.0	6/29/2005

Stimulations & Treatments

Bnch/Stg	Date	Zone	Primary Job Type
	7/13/2005	NIOBRARA-CODELL, ORIGINAL HOLE	DRILLING/COMPLETION - ORIGINAL

Comment

Total Add Amount	Total Clean Volume...	Vol Slurry Tot (gal)	Vol Gas Tot (MCF)
Proppant 300000 lb		168252.00	
Avg Treat Pressure (psi)	Max Treat Pressure (psi)	Avg Treat Rate (bbl/min)	Max Treat Rate (bbl/min)

Well Name: EDWARDS 32-15

VERTICAL - ORIGINAL HOLE, 8/6/2012 3:05:15 PM

Stimulations & Treatments

Bnch/Stg	Date	Zone	Primary Job Type
	3/19/2012	CODELL, ORIGINAL HOLE	RE-FRAC
Comment (CODELL RF): INITIAL TUBING PRESSURE - 130, INITIAL CASING PRESSURE - 0, INITIAL SURFACE PRESSURE - 0, LOADED CASING WITH 3BBL OF TREATED WATER AND HELD BETWEEN 100 AND 200PSI THROUGHOUT JOB. PUMPED 50 BBL OF TREATED WATER DOWNHOLE AND PRESSURE WELL UP TO 4350PSI TO TEST PACKER, PACKER HELD. BREAK 4124PSI@5.9BPM SHUT DOWN AFTER TESTING PACKER TO GEL UP HYDRATION UNIT. COME BACK ON FOR 62BBL (WB + 20BBL) WITH LINEAR GEL, INITIAL ISIP - 2419, INITIAL 5SIP - 730, 5MIN < 1500, RATE UP TO 18BPM, STARTED WITH 25 VIS FLUID INSTEAD OF 23 VIS, RAN 25 VIS FOR ENTINRE JOB. SAND RAN OUT 55BBL EARLY. FINAL SURFACE CASING PRESSURE - 0, FINAL BACKSIDE PRESSURE - 197, AVG RATE - 18.7, AVG PRESS - 4610, AVG VISC - 24.7, AVG TEMP - 74.5, AVG PH - 10.05, MAX RATE - 19.9, MAX PRESS - 7158.			
Total Add Amount		Total Clean Volume...	Vol Slurry Tot (gal)
Proppant Ottawa		128210.46	138975.90
237110.207 lb			
Avg Treat Pressure (psi)	Max Treat Pressure (psi)	Avg Treat Rate (bbl/min)	Max Treat Rate (bbl/min)
4,610.0	7,158.0	18.70	19.90
Other In Hole			
Run Date	Des	OD (in)	Top (ftKB)
Logs			
Date	Type	Top (ftKB)	Btm (ftKB)
6/19/2005	COMPENSATED DENSITY	531.0	7,441.0
6/29/2005	CBL/CCL/GR	6,360.0	7,413.0

