

T10N, R59W, 6th P.M.

WHITTING OIL & GAS CORP.

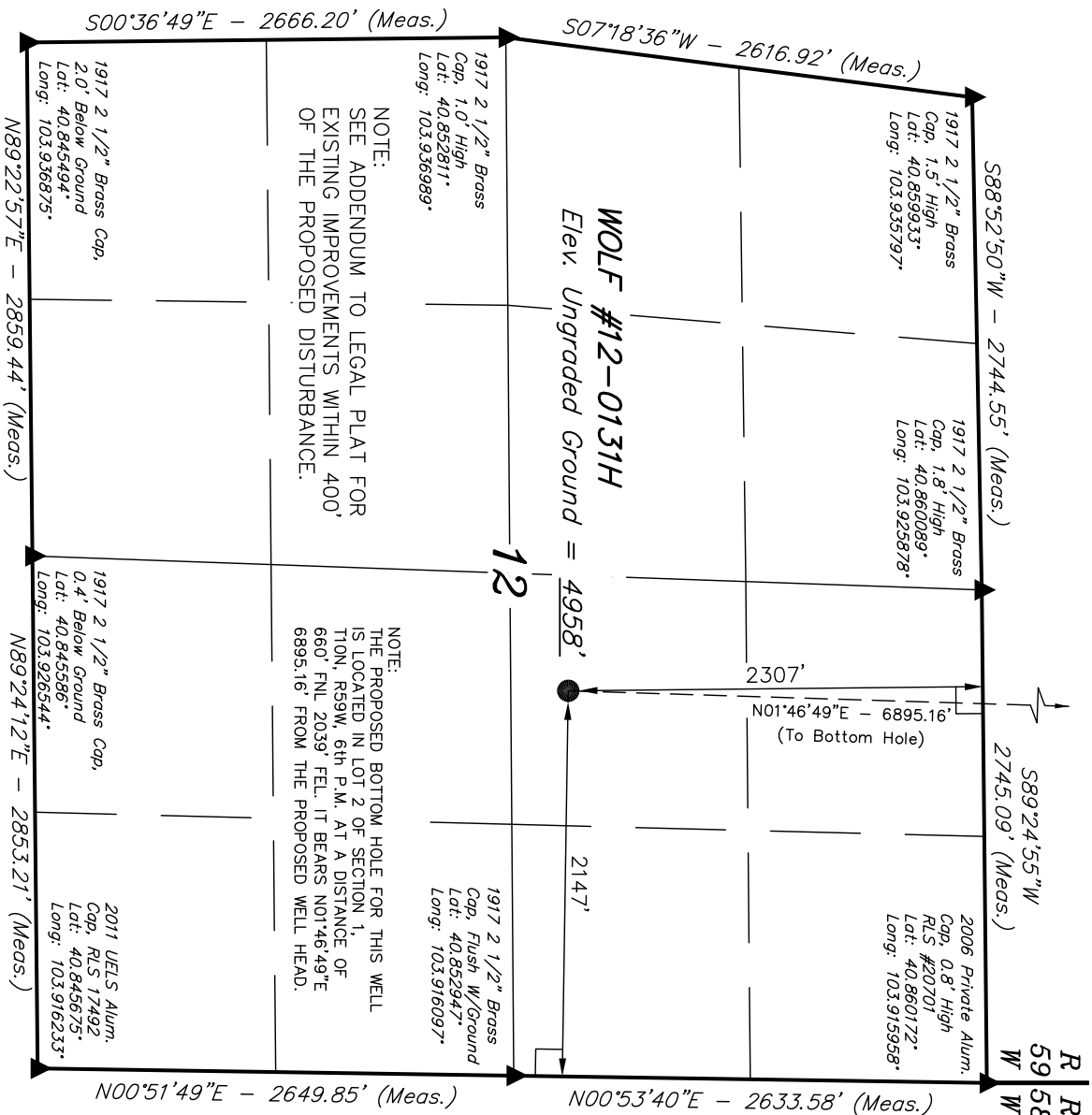
Well location, WOLF #12-0131H (SURFACE LOCATION), located as shown in the SW 1/4 NE 1/4 of Section 12, T10N, R59W, 6th P.M., Weld County, Colorado.

BASIS OF ELEVATION

SPOT ELEVATION LOCATED AT THE NORTHEAST CORNER OF SECTION 15, T9N, R58W, 6th P.M. TAKEN FROM THE RIVER BEND, QUADRANGLE, COLORADO, WELD COUNTY, 7.5 MINUTE QUAD (TOPOGRAPHIC MAP) PUBLISHED BY THE UNITED STATES DEPARTMENT OF THE INTERIOR, GEOLOGICAL SURVEY. SAID ELEVATION IS MARKED AS BEING 4679 FEET.

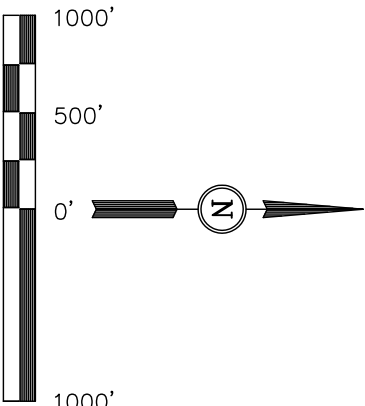
BASIS OF BEARINGS

BASIS OF BEARINGS IS A G.P.S. OBSERVATION.



NOTE:
SEE ADDENDUM TO LEGAL PLAT FOR
EXISTING IMPROVEMENTS WITHIN 400'
OF THE PROPOSED DISTURBANCE.

NOTE:
THE PROPOSED BOTTOM HOLE FOR THIS WELL
IS LOCATED IN LOT 2 OF SECTION 1,
T10N, R59W, 6th P.M. AT A DISTANCE OF
660' FNL 2039' FEL. IT BEARS N01°46'49"E
6895.16' FROM THE PROPOSED WELL HEAD.



CERTIFICATE

THIS IS TO CERTIFY THAT THE ABOVE PLAT WAS PREPARED FROM
FIELD NOTES OF ACTUAL SURVEYS MADE BY ME OR UNDER MY
SUPERVISION AND THAT THE SAME ARE TRUE AND CORRECT TO THE
BEST OF MY KNOWLEDGE AND BELIEF.

REVISED: 12-12-11
REVISED: 07-26-11
REVISED: 07-19-11
REVISED: 07-18-11

REGISTERED LAND SURVEYOR
REGISTRATION NO. 17492
STATE OF COLORADO
EXPIRATION DATE 07-12-11

UNTANH ENGINEERING & LAND SURVEYING
85 SOUTH 200 EAST - VERNAL, UTAH 84078
(435) 789-1017

SCALE	DATE SURVEYED:	DATE DRAWN:
1" = 1000'	06-23-11	07-07-11

PARTY	REFERENCES
Z.B. A.G. Z.L.	G.L.O. PLAT
WEATHER	FILE
HOT	WHITTING OIL & GAS CORP.

LEGEND:

- 90° SYMBOL
- PROPOSED WELL HEAD.
- SECTION CORNERS LOCATED.

NAD 83 (SURFACE LOCATION)
LATITUDE = 40°51'13.59" (40.853775)
LONGITUDE = 103°55'25.83" (103.923842)
NAD 27 (SURFACE LOCATION)
LATITUDE = 40°51'13.64" (40.853789)
LONGITUDE = 103°55'24.02" (103.923339)

PDOP=2.1

T10N, R59W, 6th P.M.

WHITTING OIL & GAS CORP.

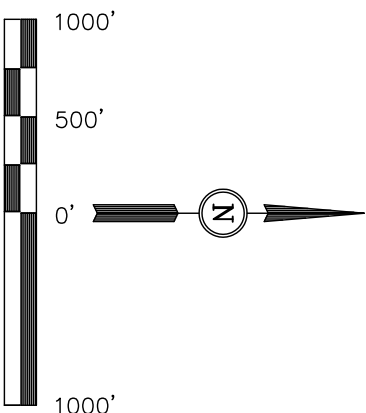
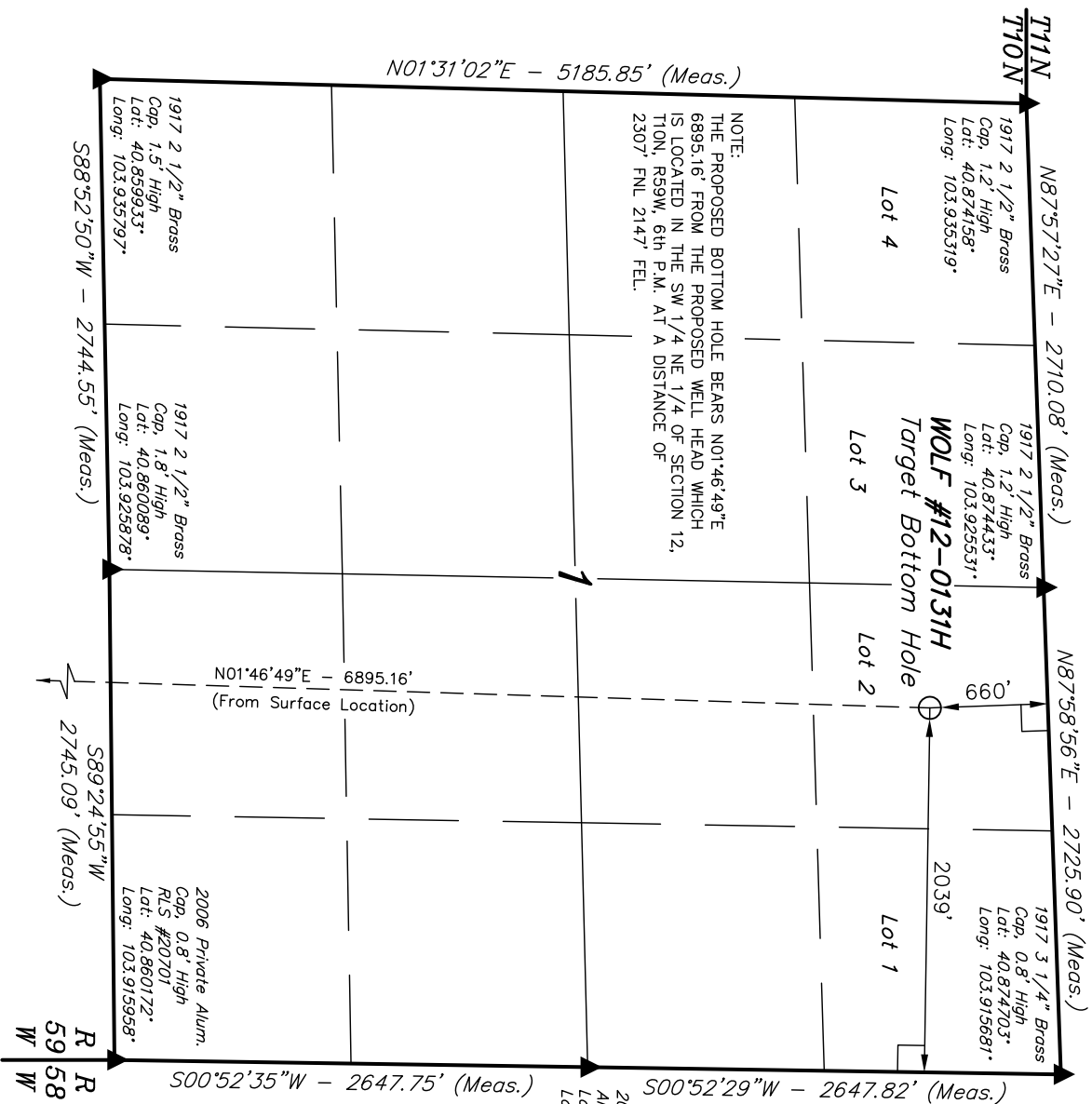
Well location, WOLF #12-0131H (TARGET BOTTOM HOLE), located as shown in Lot 2 of Section 1, T10N, R59W, 6th P.M., Weld County, Colorado.

BASIS OF ELEVATION

SPOT ELEVATION LOCATED AT THE NORTHEAST CORNER OF SECTION 15, T9N, R58W, 6th P.M. TAKEN FROM THE RIVER BEND, QUADRANGLE, COLORADO, WELD COUNTY, 7.5 MINUTE QUAD (TOPOGRAPHIC MAP) PUBLISHED BY THE UNITED STATES DEPARTMENT OF THE INTERIOR, GEOLOGICAL SURVEY. SAID ELEVATION IS MARKED AS BEING 4679 FEET.

BASIS OF BEARINGS

BASIS OF BEARINGS IS A G.P.S. OBSERVATION.



CERTIFICATE

THIS IS TO CERTIFY THAT THE ABOVE PLAT WAS PREPARED FROM FIELD NOTES OF ACTUAL SURVEYS MADE BY ME OR UNDER MY SUPERVISION AND THAT THE SAME ARE TRUE AND CORRECT TO THE BEST OF MY KNOWLEDGE AND BELIEF.

REVISED: 12-12-11
REVISED: 07-26-11
REVISED: 07-19-11
REVISED: 07-18-11

REGISTERED LAND SURVEYOR
REGISTRATION NUMBER 1492
STATE OF COLORADO
07-12-11

UNTAH ENGINEERING & LAND SURVEYING
85 SOUTH 200 EAST - VERNAL, UTAH 84078
(435) 789-1017

SCALE		DATE SURVEYED:	DATE DRAWN:
1" = 1000'		06-23-11	07-07-11
PARTY	REFERENCES		
Z.B. A.G. Z.L.	G.L.O. PLAT		
WEATHER	FILE		
HOT	WHITTING OIL & GAS CORP.		

LEGEND:

- └ = 90° SYMBOL
- = PROPOSED WELL HEAD.
- ▲ = SECTION CORNERS LOCATED.

NAD 83 (TARGET BOTTOM HOLE)	
LATITUDE = 40°52'21.71" (40.872697)	
LONGITUDE = 103°55'23.18" (103.923106)	
NAD 27 (TARGET BOTTOM HOLE)	
LATITUDE = 40°52'21.76" (40.872711)	
LONGITUDE = 103°55'21.37" (103.922603)	