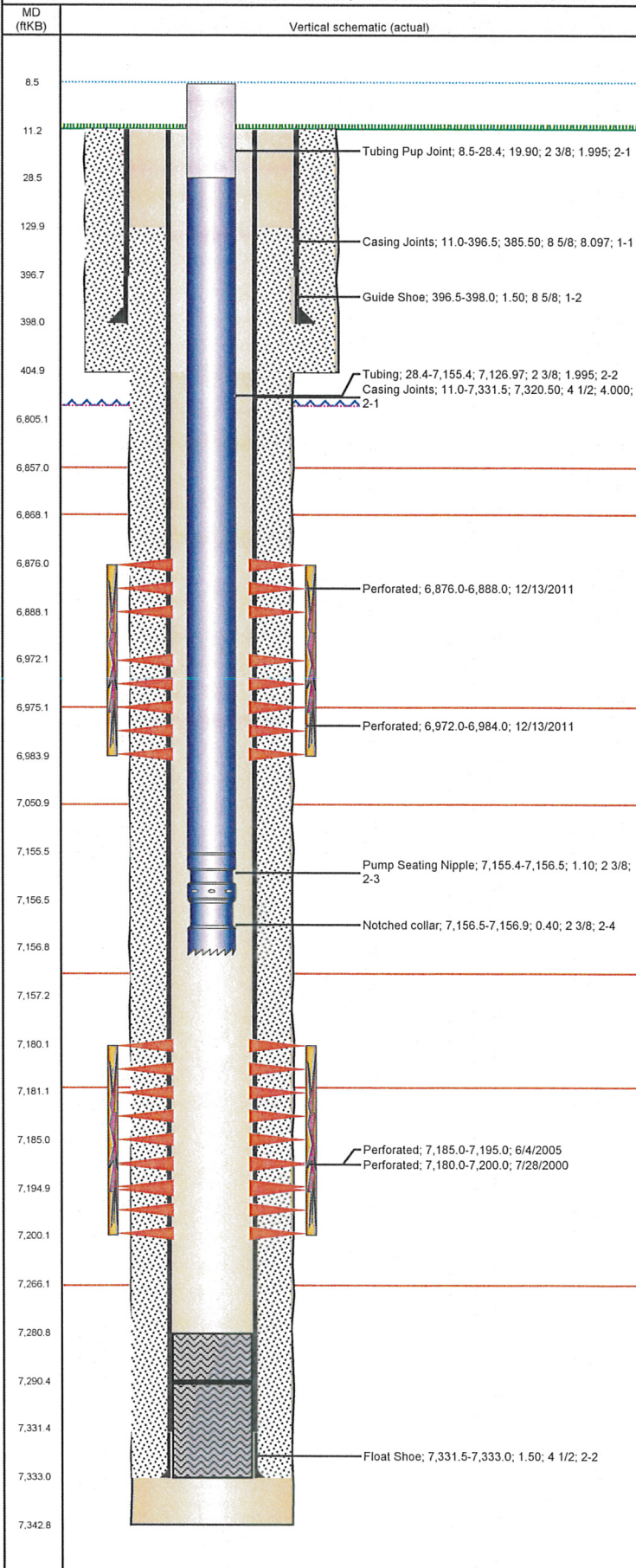


Well Name: LHI 14-11

VERTICAL - ORIGINAL HOLE, 8/6/2012 11:26:05 AM



Well Header

API 05-123-19972	Business Unit WATTENBERG	District 15	Well Config VERTICAL
Original KB Elevation (ft) 4,780.00	KB - GL / MSL (ftKB) 11.00	Spud Date 7/15/2000	P & A Date
Comment			

Directions To Well

HWY 60 & CR 46, W 2 MILES, SOUTH ON ALICE ST 1 BLOCK, WEST TO RANCH DRIVE AND 75' WEST AND NORTH 100' INTO.

Current PBTD (ftKB)

ORIGINAL HOLE - 7,290.3

Surface Location (Congressional)

Quarter 1	Quarter 2	Quarter 3	Quarter 4	Section	Township	Twnshp N...	Range	Rng E/W Dir
		NE	NE	14	4	N	67	W

Bottom Hole Location

North-South Distance (ft)	From N or S Line	East-West Distance (ft)	From E or W Line

Plug Back Total Depths

Date	Depth (ftKB)	Method	Com
7/20/2000	7,296.0	TAG	PBTD LISTED ON DAILY REPORT
7/25/2000	7,281.0	CASED HOLE LOG	DEPTH- LOGGER/CBL

Wellbore Sections

Section Des	Size (in)	Act Top (ftKB)	Act Btm (ftKB)
SURFACE	12 1/4	11.0	405.0
PRODUCTION	7 7/8	405.0	7,343.0

Zone Statuses

Zone Name	Status Date	Status	Job
CODELL	8/29/2000	PR	DRILLING/COMPLETION - ORIGINAL, 7/15/2000 00:00
CODELL	6/22/2005	PR	RE-FRAC, 6/2/2005 00:00
CODELL	12/15/2011	PR	TRI-FRAC, 11/30/2011 14:30
NIOBRARA	12/15/2011	PR	TRI-FRAC, 11/30/2011 14:30

Casing Strings

Csg Des	Run Date	OD (in)	Wt/Len (lb/ft)	Grade	Top (ftKB)	Set Depth (ftKB)
Surface	7/16/2000	8 5/8	24.00	?	11.0	398.0
Production	7/20/2000	4 1/2	11.60	?	11.0	7,333.0

Cement

Des	Top (ftKB)	Btm (ftKB)
SURFACE CASING CEMENT	11.0	398.0
PRODUCTION CASING CEMENT	130.0	7,333.0

Tubing Components

Item Des	OD (in)	Wt (lb/ft)	Grade	Jts	Len (ft)
Tubing Pup Joint	2 3/8	4.70	J-55	2	19.90
Tubing	2 3/8	4.70	J-55	230	7,126.97
Pump Seating Nipple	2 3/8			1	1.10
Notched collar	2 3/8			1	0.40

Perforation Data

Zone	Bnch/Stg	Entered Shot Total	Top (ftKB)	Btm (ftKB)	Date
NIOBRARA, ORIGINAL HOLE		24	6,876.0	6,888.0	12/13/2011
NIOBRARA, ORIGINAL HOLE		24	6,972.0	6,984.0	12/13/2011
CODELL, ORIGINAL HOLE		80	7,180.0	7,200.0	7/28/2000
CODELL, ORIGINAL HOLE		40	7,185.0	7,195.0	6/4/2005

Stimulations & Treatments

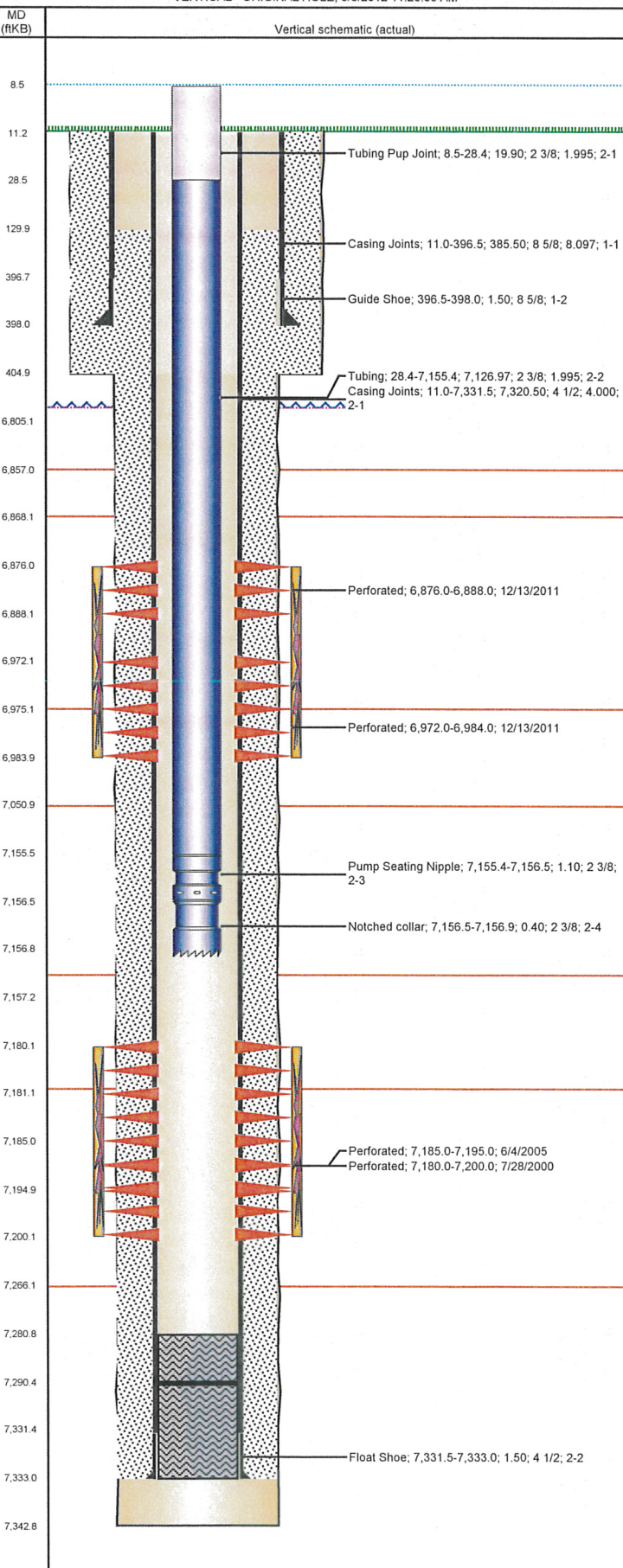
Bnch/Stg	Date	Zone	Primary Job Type
	8/24/2000	CODELL, ORIGINAL HOLE	DRILLING/COMPLETION - ORIGINAL
Comment			

Total Add Amount	Total Clean Volume...	Vol Slurry Tot (gal)	Vol Gas Tot (MCF)
Proppant 400560 lb; Proppant 100 MESH 16180 lb; Proppant AcFrac Black 8000 lb		132888.01	

Avg Treat Pressure (psi)	Max Treat Pressure (psi)	Avg Treat Rate (bbl/min)	Max Treat Rate (bbl/min)
3,126.0	3,612.0	15.10	15.50

Well Name: LHI 14-11

VERTICAL - ORIGINAL HOLE, 8/6/2012 11:26:05 AM



Stimulations & Treatments

Bnch/Stg	Date	Zone	Primary Job Type
	6/17/2005	CODELL, ORIGINAL HOLE	RE-FRAC
Comment			
Total Add Amount		Total Clean Volume...	Vol Slurry Tot (gal)
Proppant 260680 lb			99162.00
Avg Treat Pressure (psi)		Max Treat Pressure (psi)	Vol Gas Tot (MCF)
3,465.0		4,140.0	20.00
Bnch/Stg	Date	Zone	Primary Job Type
	12/13/2011	CODELL, ORIGINAL HOLE	TRI-FRAC
Comment			
(CODELL TRF): 2671 5 MIN SIP JOB WENT AS PLANNED			
Total Add Amount		Total Clean Volume...	Vol Slurry Tot (gal)
Proppant Ottawa 238112.602 lb		132255.06	143060.40
Avg Treat Pressure (psi)		Max Treat Pressure (psi)	Vol Gas Tot (MCF)
3,471.0		4,012.0	18.70
Bnch/Stg	Date	Zone	Primary Job Type
	12/13/2011	NIOBRARA, ORIGINAL HOLE	RE-FRAC
Comment			
(NIO RE COMP): 5 MIN SIP 3295 JOB WENT AS PLANNED			
Total Add Amount		Total Clean Volume...	Vol Slurry Tot (gal)
Proppant Ottawa 255043.701 lb		157052.70	168615.73
Avg Treat Pressure (psi)		Max Treat Pressure (psi)	Vol Gas Tot (MCF)
4,225.0		4,562.0	45.10

Other In Hole

Run Date	Des	OD (in)	Top (ftKB)	Btm (ftKB)

Logs

Date	Type	Top (ftKB)	Btm (ftKB)
7/19/2000	COMPENSATED DENSITY	398.0	7,329.0
7/19/2000	INDUCTION	398.0	7,349.0
7/25/2000	ACOUSTIC CEMENT BOND LOG	4,200.0	7,276.0