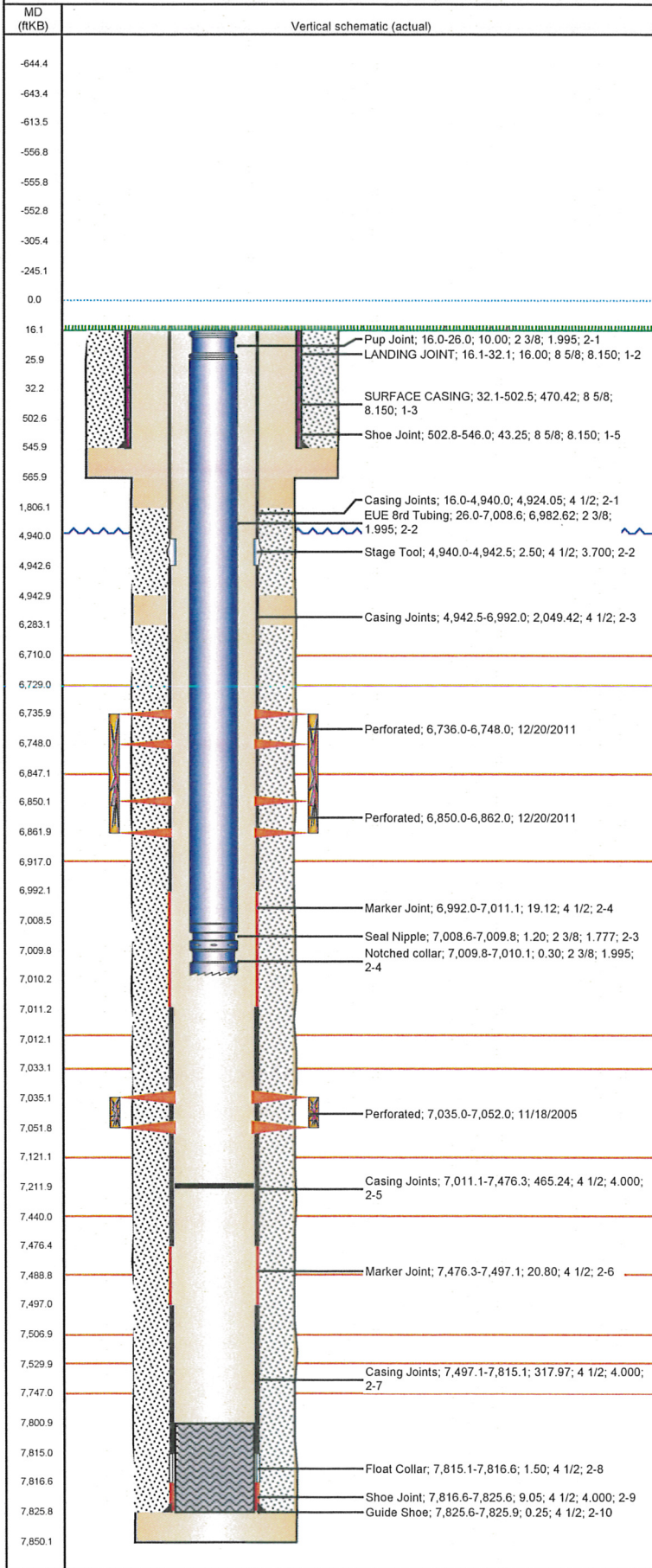


Well Name: STATE M36-01

VERTICAL - ORIGINAL HOLE, 8/6/2012 10:56:13 AM



Well Header

API	Business Unit	District	Well Config
05-123-23205	WATTENBERG	15	VERTICAL
Original KB Elevation (ft)	KB - GL / MSL (ftKB)	Spud Date	P & A Date
4,734.00	16.00	11/4/2005	

Comment
STATE LEASE; DV TOOL @ 4940'

Directions To Well
CR 25 & CR 62 NORTH 6/10 ROAD WINDS AROUND & DOWN HILL S/W THROUGH GREEN GATE 1/10 WEST INTO

Current PBTD (ftKB)
ORIGINAL HOLE - 7,212.0

Surface Location (Congressional)

Quarter 1	Quarter 2	Quarter 3	Quarter 4	Section	Township	Twnshp N...	Range	Rng E/W Dir
		NE	NE	36	6 N		67	W

Bottom Hole Location

North-South Distance (ft)	From N or S Line	East-West Distance (ft)	From E or W Line

Plug Back Total Depths

Date	Depth (ftKB)	Method	Com
11/9/2005	7,801.0	CASED HOLE LOG	DEPTH LOGGER ON CBL
11/9/2005	7,815.0	CASING TALLY	FLOAT COLLAR

Wellbore Sections

Section Des	Size (in)	Act Top (ftKB)	Act Btm (ftKB)
SURFACE	12 1/4	16.0	566.0
PRODUCTION	7 7/8	566.0	7,850.0

Zone Statuses

Zone Name	Status Date	Status	Job
CODELL	2/21/2006	PR	COMPLETION - ORIGINAL, 11/3/2005 00:00
CODELL	12/21/2011	PR	RE-FRAC & RECOMPLETE, 12/5/2011 06:00
NIOBRARA	12/21/2011	PR	RE-FRAC & RECOMPLETE, 12/5/2011 06:00

Casing Strings

Csg Des	Run Date	OD (in)	Wt/Len (lb/ft)	Grade	Top (ftKB)	Set Depth (ftKB)
SURFACE	11/5/2005	8 5/8	24.00	J-55	16.1	546.0
PRODUCTION	11/9/2005	4 1/2	11.60	WC-80	16.0	7,825.9

Cement

Des	Top (ftKB)	Btm (ftKB)
SURFACE CASING CEMENT	16.0	546.0
PRODUCTION CASING CEMENT	1,806.0	4,943.0
PRODUCTION CASING CEMENT	6,283.0	7,825.9

Tubing Components

Item Des	OD (in)	Wt (lb/ft)	Grade	Jts	Len (ft)
Pup Joint	2 3/8	4.70	J-55	1	10.00
EUE 8rd Tubing	2 3/8	4.70	J-55	216	6,982.62
Seal Nipple	2 3/8	4.70	N-80	1	1.20
Notched collar	2 3/8	4.70	J-55	1	0.30

Perforation Data

Zone	Brnch/St g	Entered Shot Total	Top (ftKB)	Btm (ftKB)	Date
NIOBRARA, ORIGINAL HOLE	A	24	6,736.0	6,748.0	12/20/2011
NIOBRARA, ORIGINAL HOLE	B	24	6,850.0	6,862.0	12/20/2011
CODELL, ORIGINAL HOLE		68	7,035.0	7,052.0	11/18/2005

Stimulations & Treatments

Brnch/Stg	Date	Zone	Primary Job Type	
	1/16/2006	CODELL, ORIGINAL HOLE	COMPLETION - ORIGINAL	
Comment				
DEADSTRING FRAC				
Total Add Amount		Total Clean Volume...	Vol Slurry Tot (gal)	Vol Gas Tot (MCF)
Proppant Ottawa 271200 lb			128310.01	
Avg Treat Pressure (psi)	Max Treat Pressure (psi)	Avg Treat Rate (bbl/min)	Max Treat Rate (bbl/min)	
7,035.0	7,736.0	16.40	17.10	

Well Name: STATE M36-01

VERTICAL - ORIGINAL HOLE, 8/6/2012 10:56:13 AM

