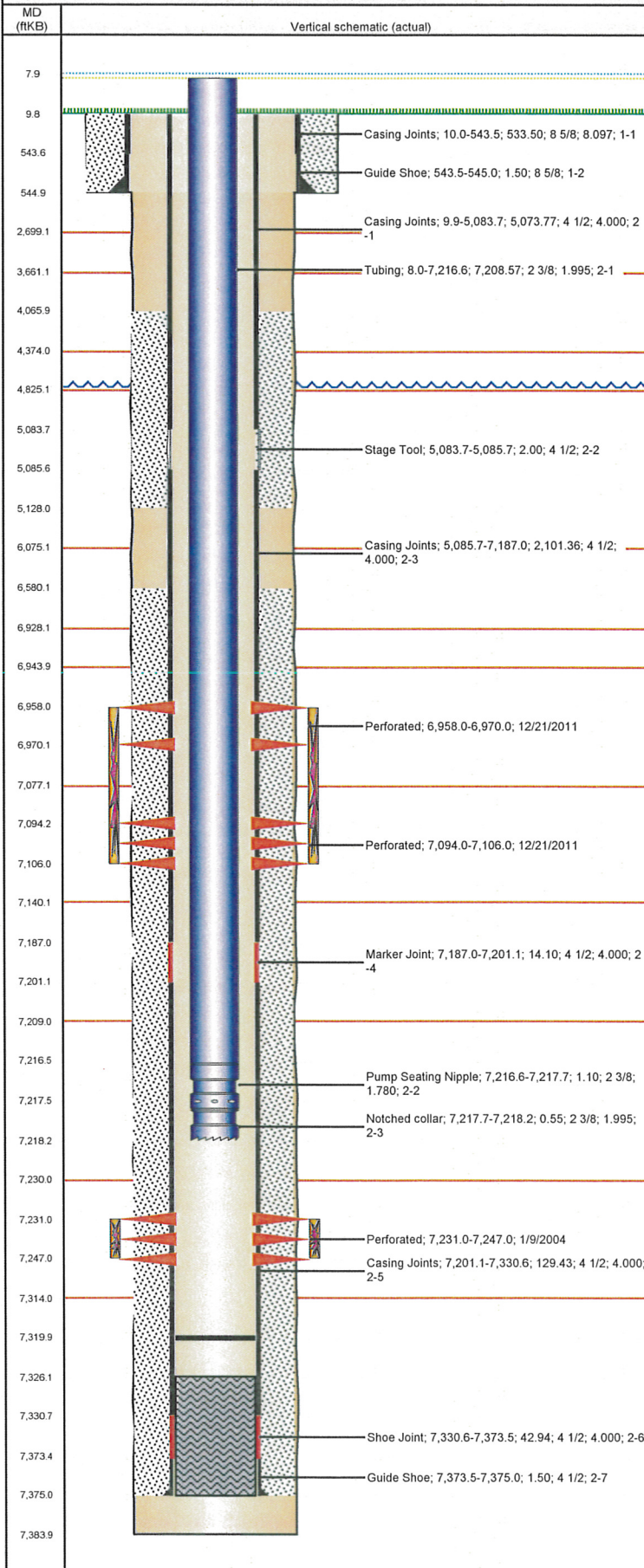


Well Name: GOLD J22-25

VERTICAL - ORIGINAL HOLE, 8/6/2012 10:17:26 AM



Well Header

API	Business Unit	District	Well Config
05-123-21829	WATTENBERG	15	VERTICAL
Original KB Elevation (ft)	KB - GL / MSL (ftKB)	Spud Date	P & A Date
4,805.00	10.00	12/15/2003	

Comment
DV TOOL @ 5129'; C/O DV TOOL 1/9/2004

Directions To Well
37TH STREET & 47TH AVE, WEST 1/2, N 100' WEST 4/10, NORTH INTO.

Current PBTD (ftKB)
ORIGINAL HOLE - 7,320.0

Surface Location (Congressional)

Quarter 1	Quarter 2	Quarter 3	Quarter 4	Section	Township	Twnshp N...	Range	Rng E/W Dir
		NW	SW	22	5	N	66	W

Bottom Hole Location

North-South Distance (ft)	From N or S Line	East-West Distance (ft)	From E or W Line

Plug Back Total Depths

Date	Depth (ftKB)	Method	Com
12/21/2003	7,331.0	CASING TALLY	SHOE JT
1/10/2004	7,326.0	CASED HOLE LOG	DEPTH LOGGER

Wellbore Sections

Section Des	Size (in)	Act Top (ftKB)	Act Btm (ftKB)
SURFACE	12 1/4	10.0	545.0
PRODUCTION	7 7/8	545.0	7,384.0

Zone Statuses

Zone Name	Status Date	Status	Job
CODELL	1/24/2004	PR	DRILLING/COMPLETION - ORIGINAL, 12/15/2003 00:00
CODELL	12/22/2011	PR	RE-FRAC & RECOMPLETE, 12/16/2011 09:00
NIOBRARA	12/22/2011	PR	RE-FRAC & RECOMPLETE, 12/16/2011 09:00

Casing Strings

Csg Des	Run Date	OD (in)	Wt/Len (lb/ft)	Grade	Top (ftKB)	Set Depth (ftKB)
Surface	12/16/2003	8 5/8	24.00	J-55	10.0	545.0
Production	12/21/2003	4 1/2	11.60	M-80	9.9	7,375.0

Cement

Des	Top (ftKB)	Btm (ftKB)
SURFACE CASING CEMENT	10.0	545.0
PRODUCTION CASING CEMENT	4,066.0	5,128.0
PRODUCTION CASING CEMENT	6,580.0	7,375.0

Tubing Components

Item Des	OD (in)	Wt (lb/ft)	Grade	Jts	Len (ft)
Tubing	2 3/8	4.70	J-55	234	7,208.57
Pump Seating Nipple	2 3/8	4.70	J-55	1	1.10
Notched collar	2 3/8	4.70	J-55	1	0.55

Perforation Data

Zone	Bnch/St g	Entered Shot Total	Top (ftKB)	Btm (ftKB)	Date
NIOBRARA, ORIGINAL HOLE	A	24	6,958.0	6,970.0	12/21/2011
NIOBRARA, ORIGINAL HOLE	C	24	7,094.0	7,106.0	12/21/2011
CODELL, ORIGINAL HOLE		64	7,231.0	7,247.0	1/9/2004

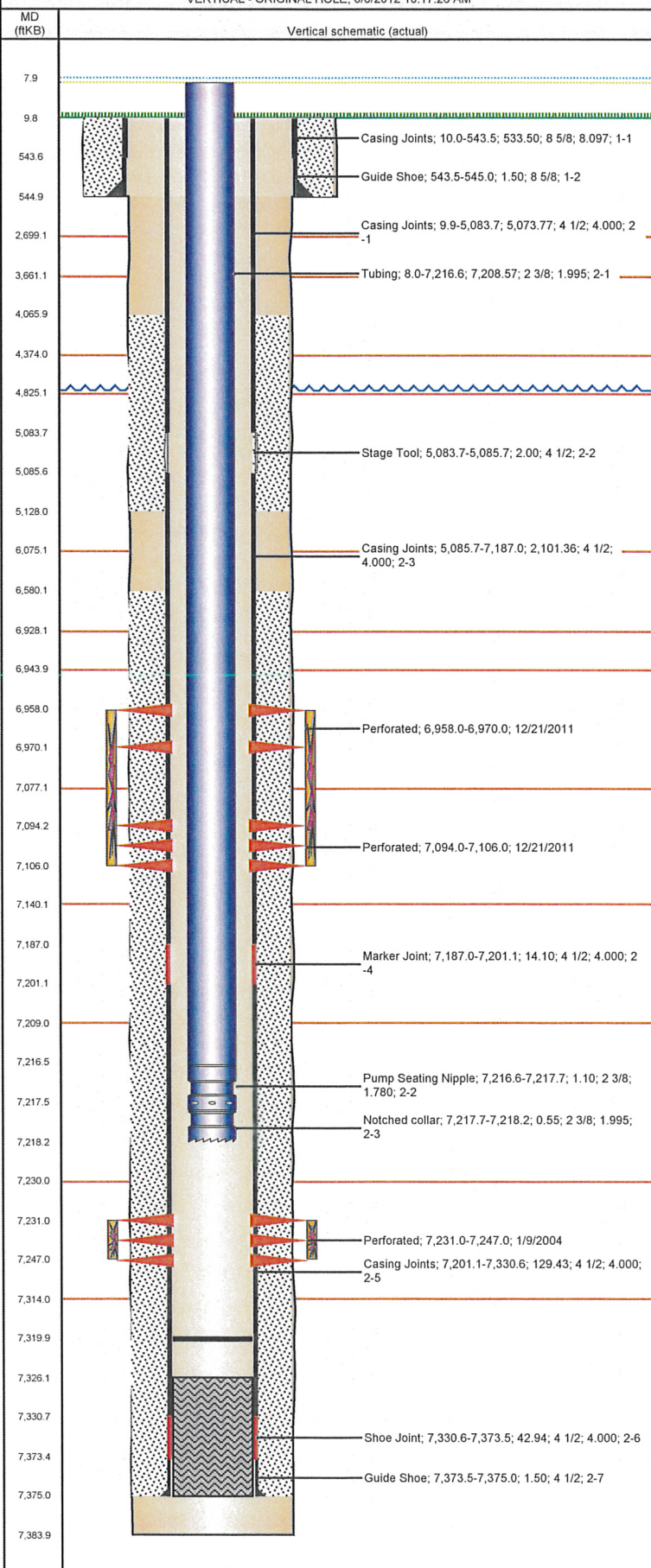
Stimulations & Treatments

Bnch/Stg	Date	Zone	Primary Job Type
	1/21/2004	CODELL, ORIGINAL HOLE	DRILLING/COMPLETION - ORIGINAL

Total Add Amount		Total Clean Volume...	Vol Slurry Tot (gal)	Vol Gas Tot (MCF)
Proppant Ottawa 270000 lb			126546.00	
Avg Treat Pressure (psi)	Max Treat Pressure (psi)	Avg Treat Rate (bbl/min)	Max Treat Rate (bbl/min)	
6,260.0	6,821.0	13.80	14.16	

Well Name: GOLD J22-25

VERTICAL - ORIGINAL HOLE, 8/6/2012 10:17:26 AM



Stimulations & Treatments

Bnch/Stg	Date	Zone	Primary Job Type	
	12/21/2011	CODELL, ORIGINAL HOLE	RE-FRAC & RECOMPLETE	
Comment				
(CODELL) - BREAK 2263 @ 5.9, ISIP 2121, 5 MIN 973, AVER VISC 25.05, AVER PH 10.27, AVER TEMP 65.97. NO ISSUES TO REPORT, TREATMENT WENT WELL.				
Total Add Amount		Total Clean Volume...	Vol Slurry Tot (gal)	Vol Gas Tot (MCF)
Proppant Ottawa		133925.40	145039.02	
244953.809 lb				
Avg Treat Pressure (psi)	Max Treat Pressure (psi)	Avg Treat Rate (bbl/min)	Max Treat Rate (bbl/min)	
4,184.0	4,740.0	25.07	30.40	
Bnch/Stg	Date	Zone	Primary Job Type	
	12/21/2011	NIOBRARA, ORIGINAL HOLE	RE-FRAC & RECOMPLETE	
Comment				
(NIOBRARA)- BREAK 4512 @ 4.1, ISIP 3658, AVER VISC 16.47, AVER PH 10.39, AVER TEMP 70.33. NO ISSUES TO REPORT, TREATMENT WENT WELL.				
Total Add Amount		Total Clean Volume...	Vol Slurry Tot (gal)	Vol Gas Tot (MCF)
Proppant Ottawa		155053.93	166403.59	
250727.503 lb				
Avg Treat Pressure (psi)	Max Treat Pressure (psi)	Avg Treat Rate (bbl/min)	Max Treat Rate (bbl/min)	
4,296.0	4,645.0	41.00	43.97	

Other In Hole

Run Date	Des	OD (in)	Top (ftKB)	Btm (ftKB)

Logs

Date	Type	Top (ftKB)	Btm (ftKB)
12/21/2003	COMPENSATED DENSITY	4,200.0	7,383.0
12/21/2003	INDUCTION	544.0	7,383.0
1/10/2004	CBL/CCL/GR	3,900.0	7,326.0