

WELL LOCATION CERTIFICATE

NW CRN SEC. 8
SET 2.5" AC LS 24657
LAT. & LONG. =
N 39.63916°
W 103.91086°

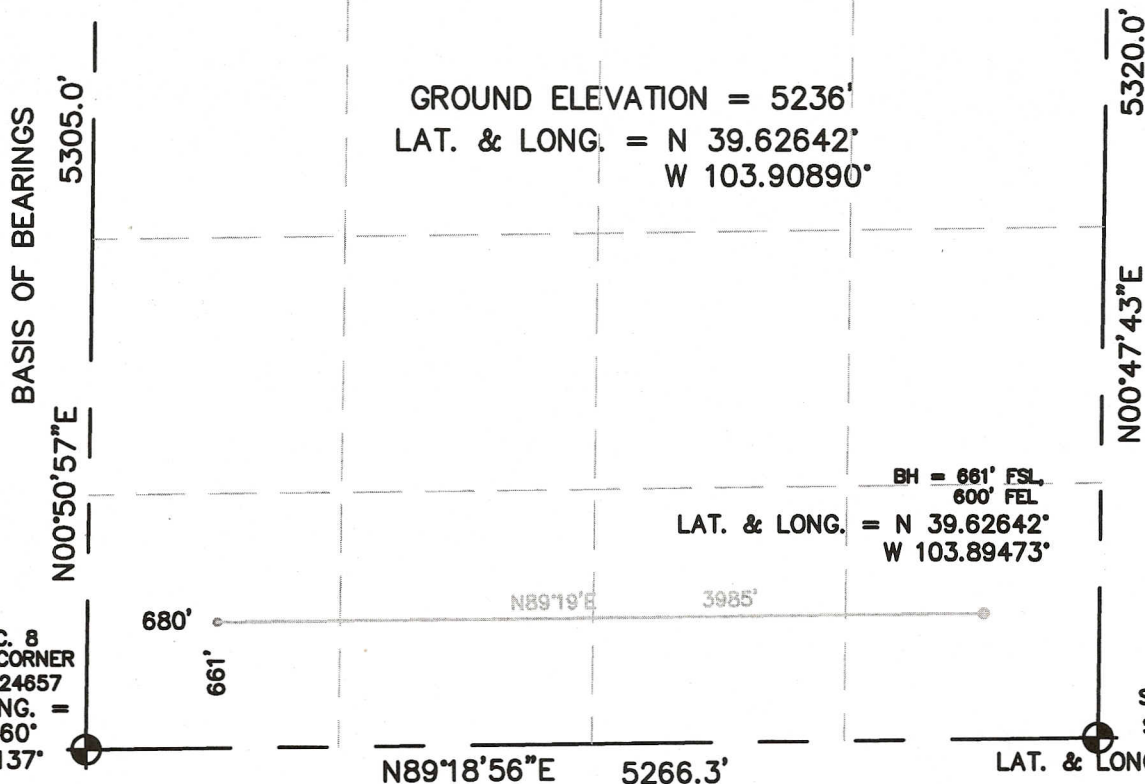
SECTION 8, TOWNSHIP 5 SOUTH, RANGE 58 WEST, 6TH P.M.
S89°09'05"W 5261.7'

SE CRN SEC. 8
SET 2.5" AC LS 24657
LAT. & LONG. = N 39.63919°
W 103.89219°

NOTES:

WELL FALLS IN A PASTURE.
THIS IS A DIRECTIONAL DRILL WELL
BOTTOM HOLE AT 661' FSL, 600' FEL
SEE LOCATION DRAWING FOR IMPROVEMENTS

GROUND ELEVATION = 5236'
LAT. & LONG. = N 39.62642°
W 103.90890°

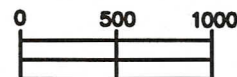


I HEREBY STATE TO SOUTHWESTERN ENERGY CO. THAT THE SURFACE LOCATION OF THE WELL STANER 5-58 #1-8 IS LOCATED 661' FSL & 680' FWL, SEC. 8, T5S, R58W, 6PM.



LEGEND

- ⊕ = FOUND/SET MONUMENT
- = PROPOSED WELL
- ⊙ = BOTTOM HOLE



SCALE 1" = 1000'

ELEVATION SOURCE = USGS 7.5' QUAD.MAP CONTOURS
NGVD 1929 DATUM.

LAT. & LONG. ARE DIFFERENTIALLY CORRECTED (WGS'84)
USING (DGPS) WITH A (PDOP) VALUE OF 1.2.

SHOWN DISTANCES ARE FIELD MEASURED - EXTERIOR SECTION LINES
ARE DRAWN TO SCALE (BEST APPROX. OR FOUND MONUMENT ⊕).

DISTANCES TO WELL SHOWN PERPENDICULAR
TO SECTION LINES.

THOMAS G. CARLSON, PLS 24657
HORSESHOE SURVEYING, LLC

THIS IS NOT A MONUMENTED BOUNDARY SURVEY, IT IS ONLY A
DRAWING INTENDED TO DEPICT THE WELL LOCATION TO SECTION LINES.

PREPARED BY: HORSESHOE SURVEYING, LLC
PO BOX 150458
LAKEWOOD, CO 80215
(720)872-0196

DRAWING DATE:
5-25-12

FIELD DATE:
5-24-12

BY: TGC

CHKD:

WELL NAME:

STANER 5-58 #1-8

LOCATION:

ARAPAHOE COUNTY, CO
SW1/4, SEC. 8, T5S, R58W, 6TH P.M.

JOB NO.

SHEET NO.

1 OF 1