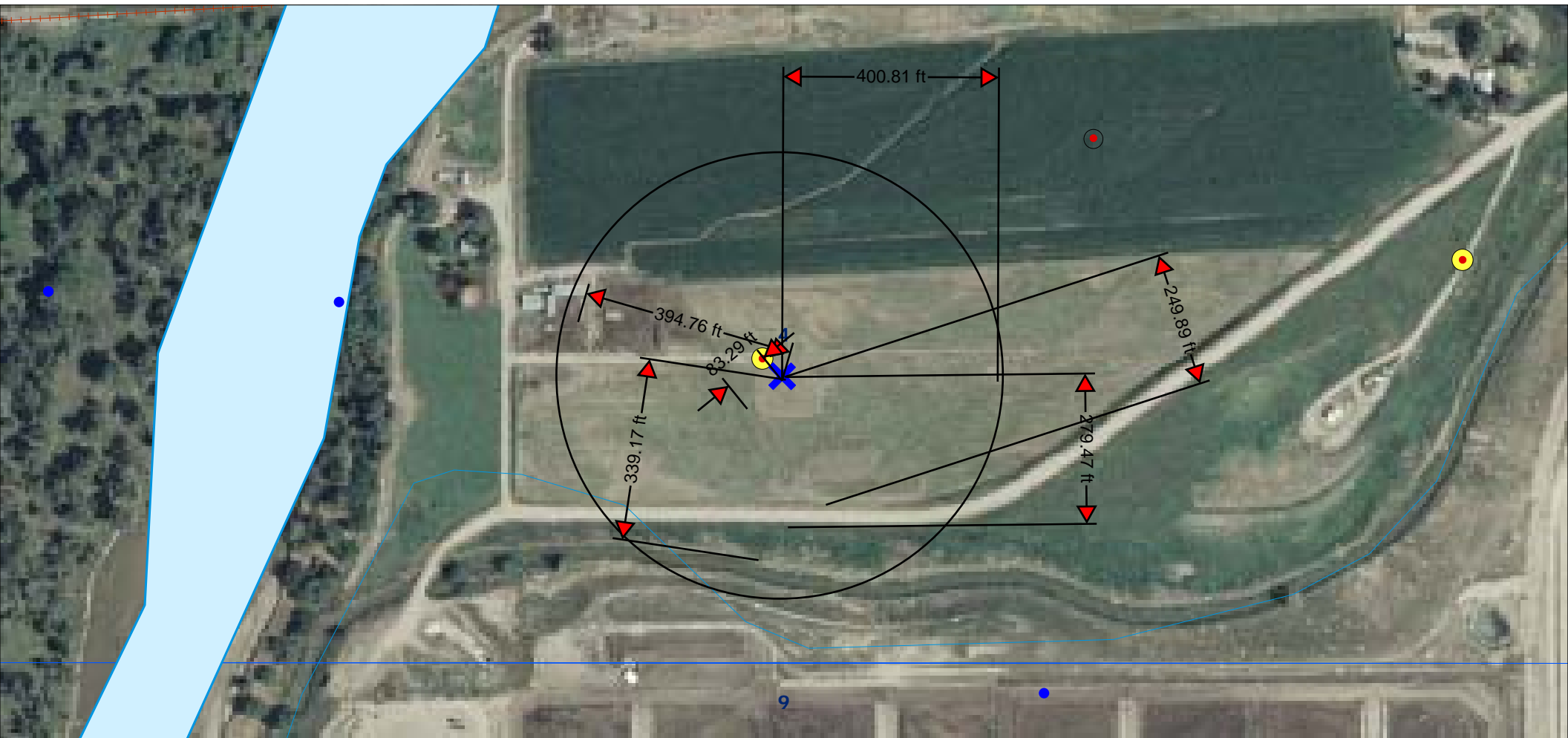


Visible improvements in 400': NE-SW running fence bearing SW at 83 ft.; NE-SW running trench bearing SW at 86 ft.;
lease/agricultural road bearing S at 250 ft.; overhead power lines bearing S at 279 ft.;
Union Ditch bearing SW at 339 ft.; farm buildings bearing NW at 395 ft.



SCALE 1 : 2,542



FEET
202.72 ft

K. P. Kauffman Company, Inc.

Well location map; visible improvements in 400'

Rumsey Land #15-4-37

SESW section 4-T4N-R66W

Weld Co., Colorado

