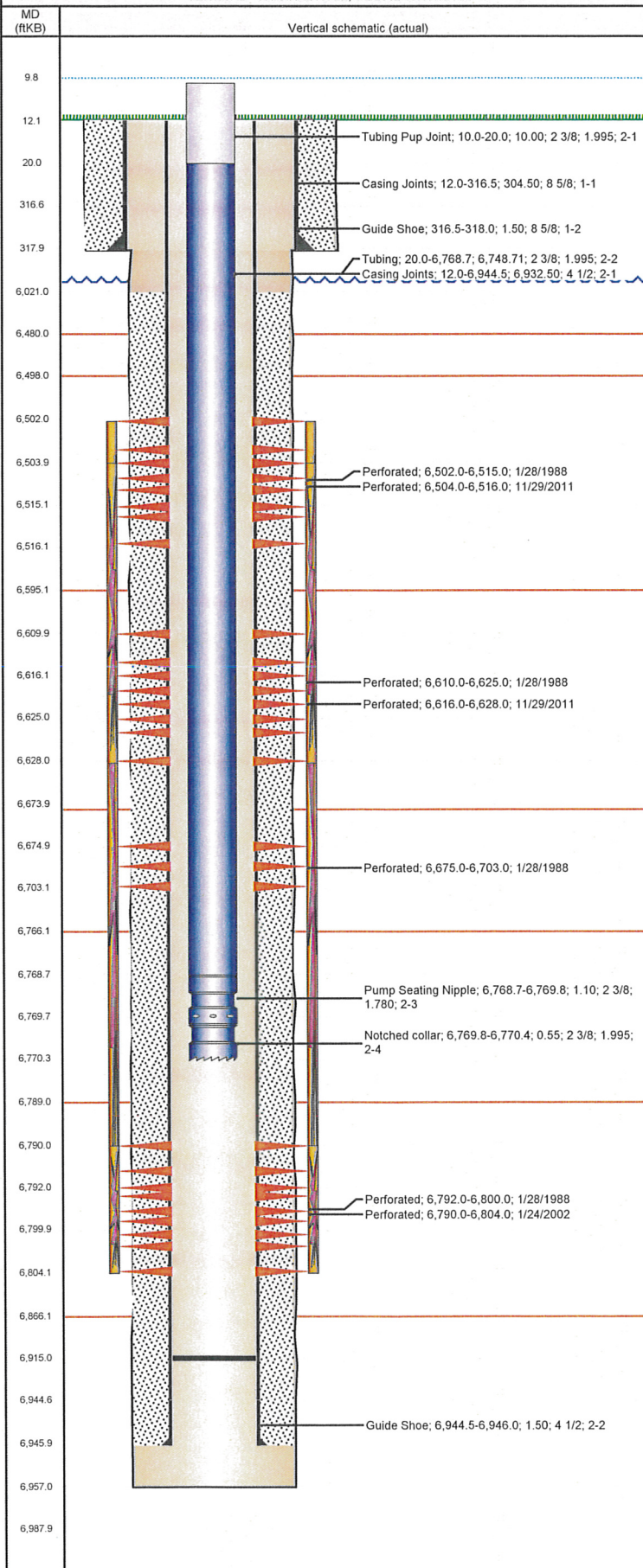


Frac Wellbore Schematic Report

Well Name: BAKER B02-05

VERTICAL - ORIGINAL HOLE, 8/2/2012 10:19:02 AM



Well Header

API 05-123-13801	Business Unit WATTENBERG	District 15	Well Config VERTICAL
Original KB Elevation (ft) 4,645.00	KB - GL / MSL (ftKB) 12.00	Spud Date 1/20/1988	P & A Date

Comment
MINIMUM OF 40' OF SURFACE CSG SLID DWN HOLE. - COMMENT NOTED ON DENSITY LOG DATED 1/25/88

Directions To Well
CR 57 & CR 60 1/2 EAST 2/10 NORTH THROUGH GATE 1/10 & 1/10 WEST INTO

Current PBTD (ftKB)
ORIGINAL HOLE - 6,915.0

Surface Location (Congressional)

Quarter 1	Quarter 2	Quarter 3	Quarter 4	Section	Township	Twship N...	Range	Rng E/W Dir
		SW	NW	2	5	N	64	W

Bottom Hole Location

North-South Distance (ft)	From N or S Line	East-West Distance (ft)	From E or W Line

Plug Back Total Depths

Date	Depth (ftKB)	Method	Com
1/26/1988	6,988.0	CASED HOLE LOG	DEPTH LOGGER ON CBL
2/1/2002	6,935.0	TAG	LAND TBG

Wellbore Sections

Section Des	Size (in)	Act Top (ftKB)	Act Btm (ftKB)
SURFACE	12 1/4	12.0	318.0
PRODUCTION	7 7/8	318.0	6,957.0

Zone Statuses

Zone Name	Status Date	Status	Job
NIOBRARA	2/29/1988	PR	DRILLING/COMPLETION - ORIGINAL, 1/20/1988 00:00
NIOBRARA	1/10/2012	PR	RE-FRAC, 11/19/2011 06:00
CODELL	2/29/1988	PR	DRILLING/COMPLETION - ORIGINAL, 1/20/1988 00:00
CODELL	2/8/2002	PR	RE-FRAC, 1/22/2002 00:00
CODELL	1/10/2012	PR	RE-FRAC, 11/19/2011 06:00

Casing Strings

Csg Des	Run Date	OD (in)	Wt/Len (lb/ft)	Grade	Top (ftKB)	Set Depth (ftKB)
Surface	1/20/1988	8 5/8	24.00	?	12.0	318.0
Production	1/26/1988	4 1/2	15.10	?	12.0	6,946.0

Cement

Des	Top (ftKB)	Btm (ftKB)
SURFACE CASING CEMENT	12.0	318.0
PRODUCTION CASING CEMENT	6,021.0	6,946.0

Tubing Components

Item Des	OD (in)	Wt (lb/ft)	Grade	Jts	Len (ft)
Tubing Pup Joint	2 3/8	4.70	J-55	1	10.00
Tubing	2 3/8	4.70	J-55	217	6,748.71
Pump Seating Nipple	2 3/8	4.70	J-55	1	1.10
Notched collar	2 3/8	4.70	J-55	1	0.55

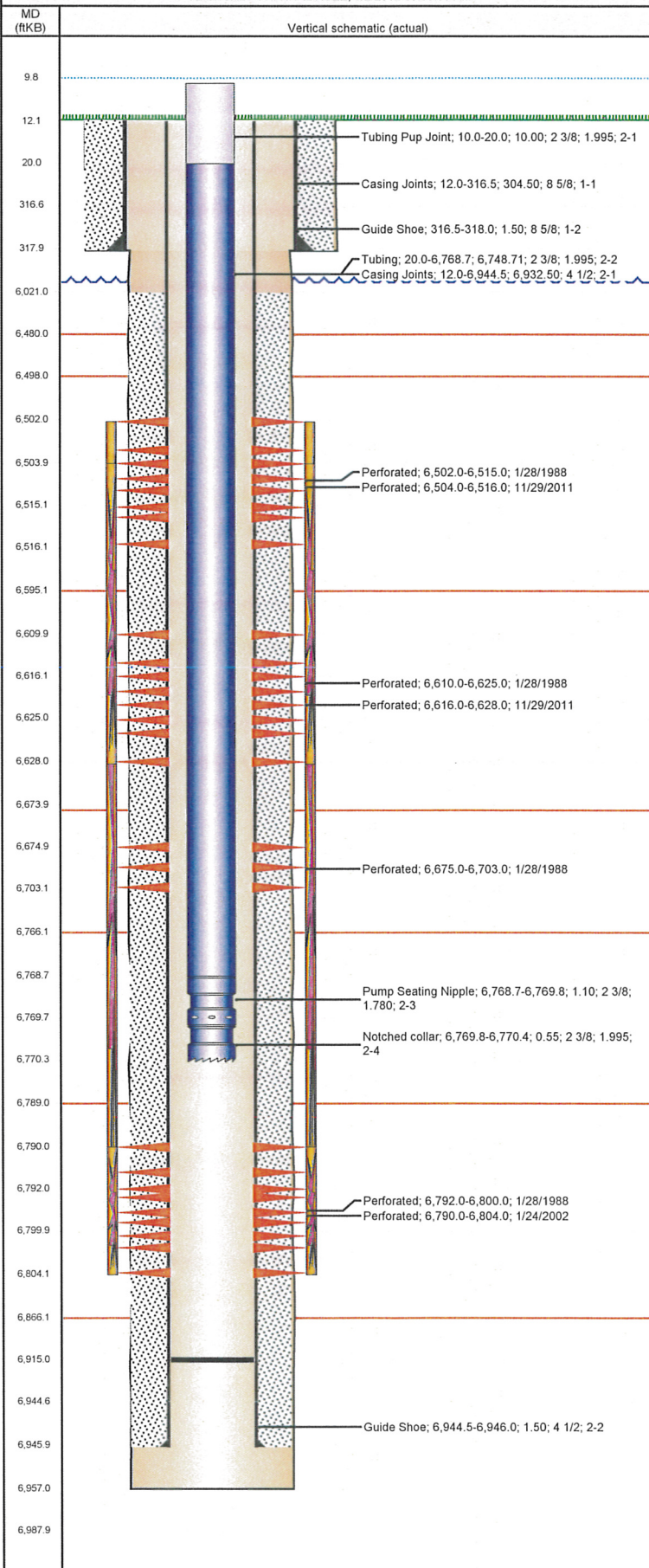
Perforation Data

Zone	Bnch/St g	Entered Shot Total	Top (ftKB)	Btm (ftKB)	Date
NIOBRARA-CODELL, ORIGINAL...	A	2	6,502.0	6,515.0	1/28/1988
NIOBRARA, ORIGINAL HOLE	A	24	6,504.0	6,516.0	11/29/2011
NIOBRARA-CODELL, ORIGINAL...	B	5	6,610.0	6,625.0	1/28/1988
NIOBRARA, ORIGINAL HOLE	B	24	6,616.0	6,628.0	11/29/2011
NIOBRARA-CODELL, ORIGINAL...	C	2	6,675.0	6,703.0	1/28/1988
CODELL, ORIGINAL HOLE		56	6,790.0	6,804.0	1/24/2002
CODELL, ORIGINAL HOLE		5	6,792.0	6,800.0	1/28/1988

Frac Wellbore Schematic Report

Well Name: BAKER B02-05

VERTICAL - ORIGINAL HOLE, 8/2/2012 10:19:03 AM



Stimulations & Treatments			
Bnch/Stg	Date	Zone	Primary Job Type
	1/30/1988	NIOBRARA-CODELL, ORIGINAL HOLE	DRILLING/COMPLETION - ORIGINAL
Comment LIMITED ENTRY FRAC ATTEMPTED FORMATION BREAK DNW W/1000 GALS OF 7 1/2% ACID, COULD NOT BREAK DWN; USED ANOTHER 1000 GALS WITH FRAC; ALL 48 BBLs ARE NOTED WITH FRAC; ; GREAT GUNS RE-PERFORATED 1/29/98 - NO DETAILS			
Total Add Amount	Total Clean Volume...	Vol Slurry Tot (gal)	Vol Gas Tot (MCF)
Proppant 228000 lb; Proppant 100 MESH 12000 lb; Proppant AcFrac Black 10000 lb		80136.00	
Avg Treat Pressure (psi)	Max Treat Pressure (psi)	Avg Treat Rate (bbl/min)	Max Treat Rate (bbl/min)
4,900.0	5,900.0	35.00	35.00
Bnch/Stg	Date	Zone	Primary Job Type
	1/29/2002	CODELL, ORIGINAL HOLE	RE-FRAC
Comment Total Add Amount Proppant Ottawa 245580 lb			
Total Clean Volume...	Vol Slurry Tot (gal)	Vol Gas Tot (MCF)	
	132762.00		
Avg Treat Pressure (psi)	Max Treat Pressure (psi)	Avg Treat Rate (bbl/min)	Max Treat Rate (bbl/min)
4,345.0	5,028.0	8.40	8.60
Bnch/Stg	Date	Zone	Primary Job Type
	11/29/2011	CODELL, ORIGINAL HOLE	RE-FRAC
Comment (CODELL) - BREAK 3104 @ 5.3. ISIP 3255, 5 MIN 2503. AVER VISC 27.99, AVER PH 10.27, AVER TEMP 69.7. TREATMENT WENT WELL. SAND HAULER NOTIFIED BJS FIELD PERSONEL ON LOCATION THAT ALL OF HER LOAD WAS NOT BLOWN OFF INTO SAND KING (3000-4500#) BUT TICKET WAS LEFT. DRIVER THEN TURNED AROUND IN FIELD WHEN LEAVING LOCATION AFTER BEING TOLD NOT TO DO SO.			
Total Add Amount	Total Clean Volume...	Vol Slurry Tot (gal)	Vol Gas Tot (MCF)
Proppant Ottawa 237397.894 lb	131924.10	142695.42	
Avg Treat Pressure (psi)	Max Treat Pressure (psi)	Avg Treat Rate (bbl/min)	Max Treat Rate (bbl/min)
3,641.0	3,871.0	18.00	18.70
Bnch/Stg	Date	Zone	Primary Job Type
	11/29/2011	NIOBRARA, ORIGINAL HOLE	RE-FRAC
Comment (NIOBRARA) - BREAK 3578 @ 4.7. ISIP 3487, AVER VISC 717.45, AVER PH 10.46, AVER TEMP 68. TREATMENT WENT WELL, NO ISSUES TO REPORT.			
Total Add Amount	Total Clean Volume...	Vol Slurry Tot (gal)	Vol Gas Tot (MCF)
Proppant Ottawa 234316.104 lb	147530.89	158153.10	
Avg Treat Pressure (psi)	Max Treat Pressure (psi)	Avg Treat Rate (bbl/min)	Max Treat Rate (bbl/min)
4,289.0	4,446.0	35.20	36.00
Other In Hole			
Run Date	Des	OD (in)	Top (ftKB) Btm (ftKB)
Logs			
Date	Type	Top (ftKB)	Btm (ftKB)
1/25/1988	COMPUTER ANALYZED LOG SYSTEMS	3,450.0	6,846.0
1/25/1988	DENSITY	3,450.0	6,846.0
1/25/1988	INDUCTION	276.0	6,848.0
1/28/1988	ACOUSTIC CEMENT BOND	5,800.0	6,883.0