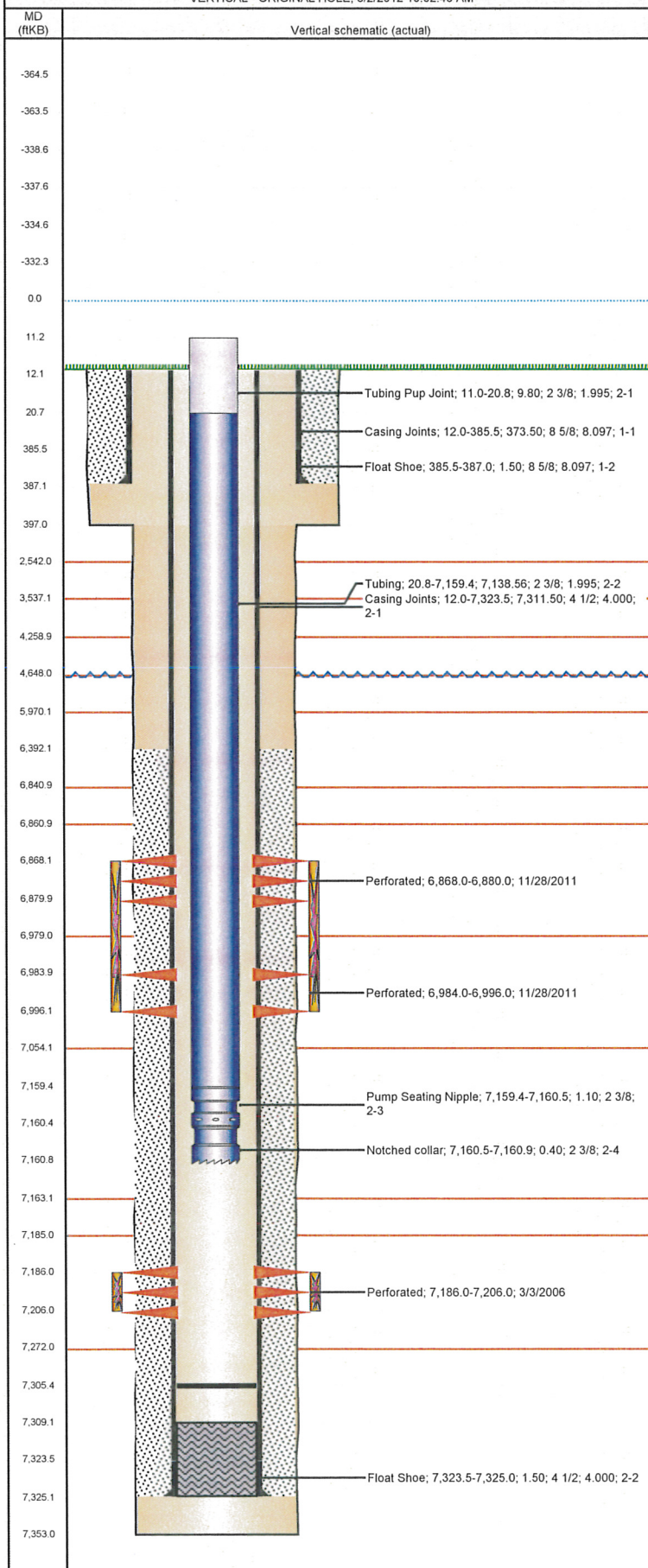


Well Name: HANSEN O01-10

VERTICAL - ORIGINAL HOLE, 8/2/2012 10:02:43 AM



## Well Header

API	Business Unit	District	Well Config
05-123-22420	WATTENBERG	15	VERTICAL
Original KB Elevation (ft)	KB - GL / MSL (ftKB)	Spud Date	P & A Date
4,726.00	12.00	2/18/2006	
Comment			

## Directions To Well

HWY 60 & WCR 23.5, N 1/4, E 1/4, N .4, W .10, NWW .2 INTO.

## Current PBTD (ftKB)

ORIGINAL HOLE - 7,305.4

## Surface Location (Congressional)

Quarter 1	Quarter 2	Quarter 3	Quarter 4	Section	Township	Twnshp N...	Range	Rng E/W Dir
		NW	SE	1	4	N	67	W

## Bottom Hole Location

North-South Distance (ft)	From N or S Line	East-West Distance (ft)	From E or W Line

## Plug Back Total Depths

Date	Depth (ftKB)	Method	Com
2/25/2006	7,309.0	CASING TALLY	GUIDE SHOE
3/2/2006	7,280.0	CASED HOLE LOG	DEPTH LOGGER

## Wellbore Sections

Section Des	Size (in)	Act Top (ftKB)	Act Btm (ftKB)
SURFACE	12 1/4	12.0	397.0
PRODUCTION	7 7/8	397.0	7,353.0

## Zone Statuses

Zone Name	Status Date	Status	Job
CODELL	3/16/2006	PR	DRILLING/COMPLETION - ORIGINAL, 2/18/2006 00:00
CODELL	11/29/2011	PR	RE-FRAC, 11/4/2011 06:00
NIOBRARA	11/29/2011	PR	RE-FRAC, 11/4/2011 06:00

## Casing Strings

Csg Des	Run Date	OD (in)	Wt/Len (lb/ft)	Grade	Top (ftKB)	Set Depth (ftKB)
Surface	2/19/2006	8 5/8	24.00	J-55	12.0	387.0
Production	2/25/2006	4 1/2	11.60	M-80	12.0	7,325.0

## Cement

Des	Top (ftKB)	Btm (ftKB)
SURFACE CASING CEMENT	12.0	387.0
PRODUCTION CASING CEMENT	6,392.0	7,325.0

## Tubing Components

Item Des	OD (in)	Wt (lb/ft)	Grade	Jts	Len (ft)
Tubing Pup Joint	2 3/8	4.70	J-55	1	9.80
Tubing	2 3/8	4.70	J-55	217	7,138.56
Pump Seating Nipple	2 3/8			1	1.10
Notched collar	2 3/8			1	0.40

## Perforation Data

Zone	Bnch/St g	Entered Shot Total	Top (ftKB)	Btm (ftKB)	Date
NIOBRARA, ORIGINAL HOLE	A	24	6,868.0	6,880.0	11/28/2011
NIOBRARA, ORIGINAL HOLE	B	24	6,984.0	6,996.0	11/28/2011
CODELL, ORIGINAL HOLE		80	7,186.0	7,206.0	3/3/2006

## Stimulations & Treatments

Bnch/Stg	Date	Zone	Primary Job Type
	3/14/2006	CODELL, ORIGINAL HOLE	DRILLING/COMPLETION - ORIGINAL
Comment			

Total Add Amount	Total Clean Volume...	Vol Slurry Tot (gal)	Vol Gas Tot (MCF)
Proppant Ottawa 270180 lb		128562.00	
Avg Treat Pressure (psi)	Max Treat Pressure (psi)	Avg Treat Rate (bbl/min)	Max Treat Rate (bbl/min)
6,215.0	6,643.0	14.40	14.80

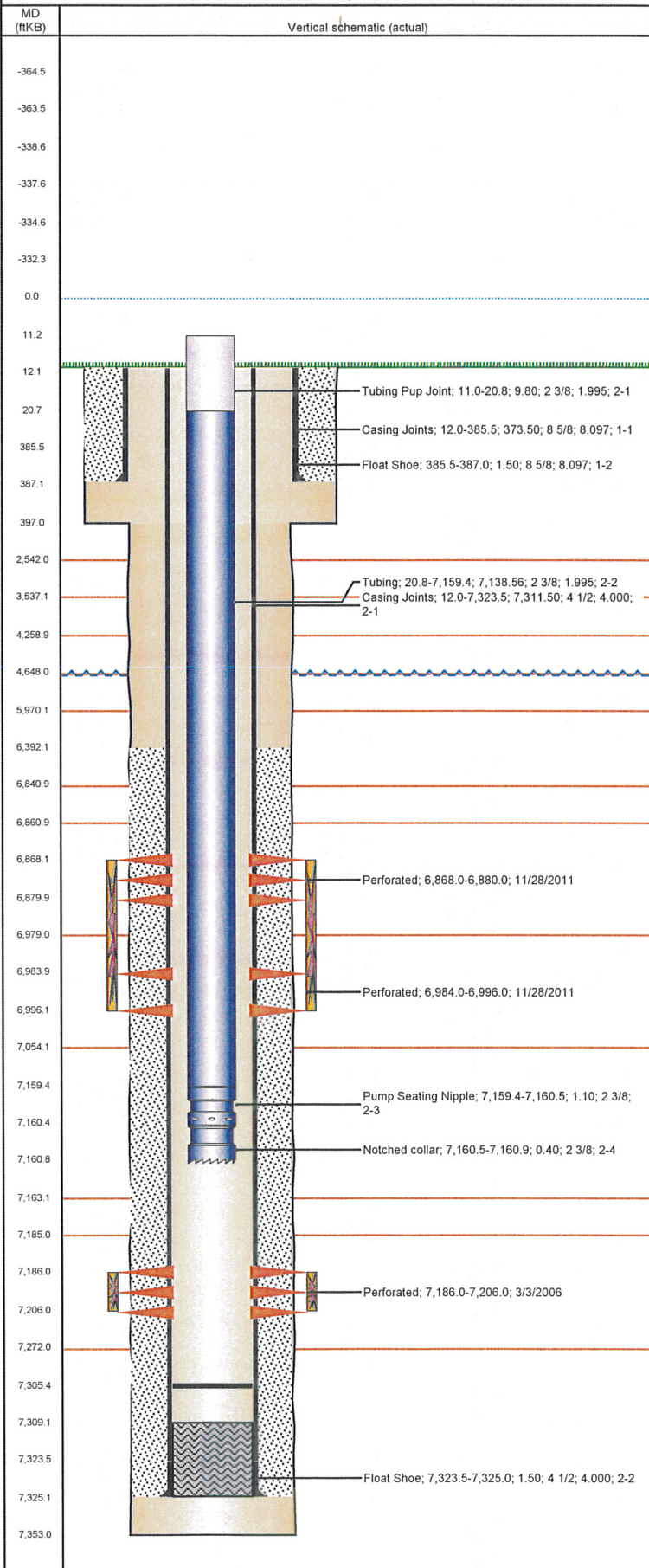
Bnch/Stg	Date	Zone	Primary Job Type
	11/28/2011	CODELL, ORIGINAL HOLE	RE-FRAC
Comment			

(CODELL) - BREAK 2856 @ 10.9, ISIP 1810, AVER VISC 23.66, AVER PH 10.25, AVER TEMP 69.6. NO ISSUES TO REPORT, TREATMENT WENT WELL.

Total Add Amount	Total Clean Volume...	Vol Slurry Tot (gal)	Vol Gas Tot (MCF)
Proppant Ottawa 243088.094 lb	128424.24	139457.22	
Avg Treat Pressure (psi)	Max Treat Pressure (psi)	Avg Treat Rate (bbl/min)	Max Treat Rate (bbl/min)
3,394.0	3,520.0	16.00	16.40

Well Name: HANSEN O01-10

VERTICAL - ORIGINAL HOLE, 8/2/2012 10:02:44 AM



## Stimulations & Treatments

Bnch/Stg	Date	Zone	Primary Job Type
	11/28/2011	NIOBRARA, ORIGINAL HOLE	RE-FRAC
Comment (NIOBRARA RC) - BREAK 3519 @ 2.1, ISIP 3367, AVER VISC 18.04, AVER PH 10.45, AVER TEMP 70.9. NO ISSUES TO REPORT, TREATMENT WENT WELL.			
Total Add Amount	Total Clean Volume...	Vol Slurry Tot (gal)	Vol Gas Tot (MCF)
Proppant Ottawa 244851.701 lb	152714.95	163807.14	
Avg Treat Pressure (psi)	Max Treat Pressure (psi)	Avg Treat Rate (bbl/min)	Max Treat Rate (bbl/min)
4,187.0	4,669.0	40.90	43.10

## Other In Hole

Run Date	Des	OD (in)	Top (ftKB)	Btm (ftKB)

## Logs

Date	Type	Top (ftKB)	Btm (ftKB)
2/24/2006	COMPENSATED DENSITY	2,400.0	7,327.0
2/24/2006	INDUCTION	387.0	7,347.0
3/2/2006	CBL/CCL/GR	6,300.0	7,279.0