

LEASE NUMBER -
FEE

12 POINT SURFACE USE PLAN

FEE 162Y

API# applied for with COGCC

LOCATED IN

RANGELY WEBER SAND UNIT

566 FNL' & 1443 FEL NWNE Section, T2N, R102W, 6TH PM

RIO BLANCO COUNTY, COLORADO

CHEVRON USA, Inc
Fee 162Y

LEGAL DESCRIPTION: **566 FNL' & 1443 FEL NWNE Section, T2N, R102W, 6TH PM**

1. EXISTING ROADS

See attached Topographic Map "A" and attached full Rangely Weber Sand Unit (COC 47675X) field map referenced as "ROAD MAP". Please note on "Addendum to Legal Plat" this location will be built just off the existing lease road.

To reach CHEVRON proposed FEE 162Y location - Proceed west out of Rangely, Colorado on Colorado State Highway 64 approximately 2.4 miles, turn North on Chevron lease road, proceed approximately 0.5 miles to the junction of this road and an existing road to the NW, approximately 0.9 miles to junction of this road and an existing road to the NW, turn left and proceed in NW direction 260' to access road.

All of the improved surface roads in the area are maintained by Chevron or its subcontractors. This maintenance consists of some minor grade work for smoothing of road grades and for snow removal by road maintainers with dozer blades and other contractor's equipment as required.

Chevron will follow guidelines from BLM Gold book Road Maintenance page 30, "Maintenance activities normally required include monitoring, blading, surface replacement, dust abatement, spot repairs, slide removal, ditch cleaning, culvert cleaning, litter cleanup, noxious weed control, and snow removal. When applicable, specific areas shall be identified in the road maintenance plan for disposal of slide material, borrow or quarry sites, stock piles, or other uses that are needed for the project. Key maintenance considerations include regular inspections; reduction of ruts and holes; maintenance of crowns and out slopes to keep water off the road; replacement of surfacing materials; clearing of sediment blocking ditches and culverts.."

Copies of BLM Manual 9113 have been distributed to Chevron facility engineers and Chevron facility reps to utilize for any new road construction and maintenance standards

2. PLANNED ACCESS ROAD

See Topographic Map "B".

The planned access road is will be approximately 57 in length' by 20' wide to be constructed to BLM Gold book standards. The lease road is relatively flat - no major cuts, a center crown to the road will allow for drainage to side ditches that will be excavated to a depth of 1 foot minimum below the finished road surface. There will be no need for any road structures such as culverts or bridges. Pit run will be used for road surfacing material. Pit run is ordered and supplied by Ace West Trucking Inc (970-675-2753) 15762 Hwy 64, Rangely, CO 81648 and / or Urie Rock Company (970-675-5766) 2424 East Main, Rangely, CO 81648. There are no fences on the property. Installing gates, cattle guards, or cutting fences will not be required. The terrain that is traversed by this road is relatively flat and is vegetated with sparse amounts of sagebrush and grasses. Turn outs will not be required.

Approval shall be requested to continue operations should the surface become saturated to a depth of three (3) inches.

3. EXISTING WELLS See Topographic Map "C".

There are numerous wells within a one mile radius of this location.

4. LOCATION OF EXISTING AND PROPOSED FACILITIES

There will be TWO INJECTION lines. These lines will transport water and CO2 injection fluids to the new well from tie in points off location. A typical right of way would be 20 foot either side of staked markers at a depth of 42 inches. The right of way will be fully reclaimed to current BLM specifications and stipulations. No additional Sundry notification will be submitted for this pipeline. All existing facilities maps are on file with the BLM - Meeker office. A complete set is of the water (WATER INJECTION LINES), CO2 (GAS INJECTION LINES) maps can be resubmitted if requested.

All permanent facilities placed on the location will be painted Carlsbad Canyon Brown to blend with the natural environment. The well cellar will be covered with steel grating and no hazards will exist for livestock or wildlife.

Updated geospatial data for this FEE location has not been emailed to BLM, it can be submitted if requested.

5. LOCATION OF AND TYPE OF WATER SUPPLY AND FUEL GAS

Fresh water required for boilers and other needs will be trucked from Chevron's Main Water Treatment Plant. Chevrone's Main Water Treatment Plant is located at NESE Section 32,T2N,R102W, 6TH P.M. A quarter of a mile off Colorado Hiway 64 on a Chevron owned lease road. Water will be trucked from the Water Plant 1.2 miles East on Hiway 64 to the Fee 162Y location lease road turn off to the North, then approximately 1/2 mile to the well site. Please see attached "Fresh Water Access Route" map, the route is highlighted in yellow. The estimated amount of water to be used during construction (minimal - 100 bbls), drilling (6000 bbls), fracing (20,000 bbls) and dust abatement (2500 bbls) for two wells.

Diesel fuel for drilling will be kept on location in a properly installed above ground diesel tank. (See "TYPICAL RIG LAYOUT - FUEL TRAILER"). Containment area will be engineered to contain 110% of calculated volumes.

There will be no water well drilled on the location site.

6. SOURCE OF CONSTRUCTION MATERIALS

No additional construction materials are planned at this time, if muddy conditions exist at the time of construction, extra gravels, sand, or road base will be acquired from Ace West Trucking Inc, 15672 US Hwy 64, Rangely 675-2753 gravel pits, which are privately owned or leased from the Bureau of Land Management (BLM).

7. METHODS FOR HANDLING WASTE DISPOSAL

A closed - loop drilling system will be utilized, using a cuttings catch pit, dewatering system, centrifuge system and additional fluid storage. The cuttings pit (reserve pit as indicated on Figure #1) will be 11 feet deep, 30 feet wide, and 130 feet long with 10 foot wide bench with a 1 1/2 :1 slope. The cuttings will be placed in a pit on site and buried.

The construction of this cuttings pit will be constructed to BLM Gold Book standards. No liner will be needed for this cuttings pit. Cuttings will be buried in the cutting pit, with 3 feet of fill. Prior to burial of cuttings, if any (none anticipated) liquid oil or water will be trucked to the Chevron Main Water Plant, to be filtered, separated and water will be re-injected into the Weber formation. Oil will be skimmed at the Main Water Plant and pipelined to an oil gathering collection station. Minimal materials will be taken to RNI (see contact information below) for disposal (such as frac sand cleaned out during completion). The pits will be fenced with 32" to 48" high woven wire to protect wildlife and domestic animals. Netting will be installed to prevent access by migratory birds. After the completion rig finishes, and the reserve pit is covered then the surface is contoured to conform to surrounding terrain.

Any waste products will be handled by RN Industries, 244 West Hwy 40, Roosevelt, Utah 84066 Dale Price 435-722-2800.

Trash will be confined in a covered container. After the rig is moved off the location the well site will be cleaned and all refuse removed by Rangely Trash Service 675-2878, and hauled to the approved landfill in Rio Blanco County.

A portable toilet will be supplied for human waste. Redi Services LLC, 235 County Rd 15, Meeker Colorado 970-878-4444 services toilets and removes portable toilet waste.

8. ANCILLARY FACILITIES

There are no ancillary facilities planned for at the present time and none foreseen in the near future.

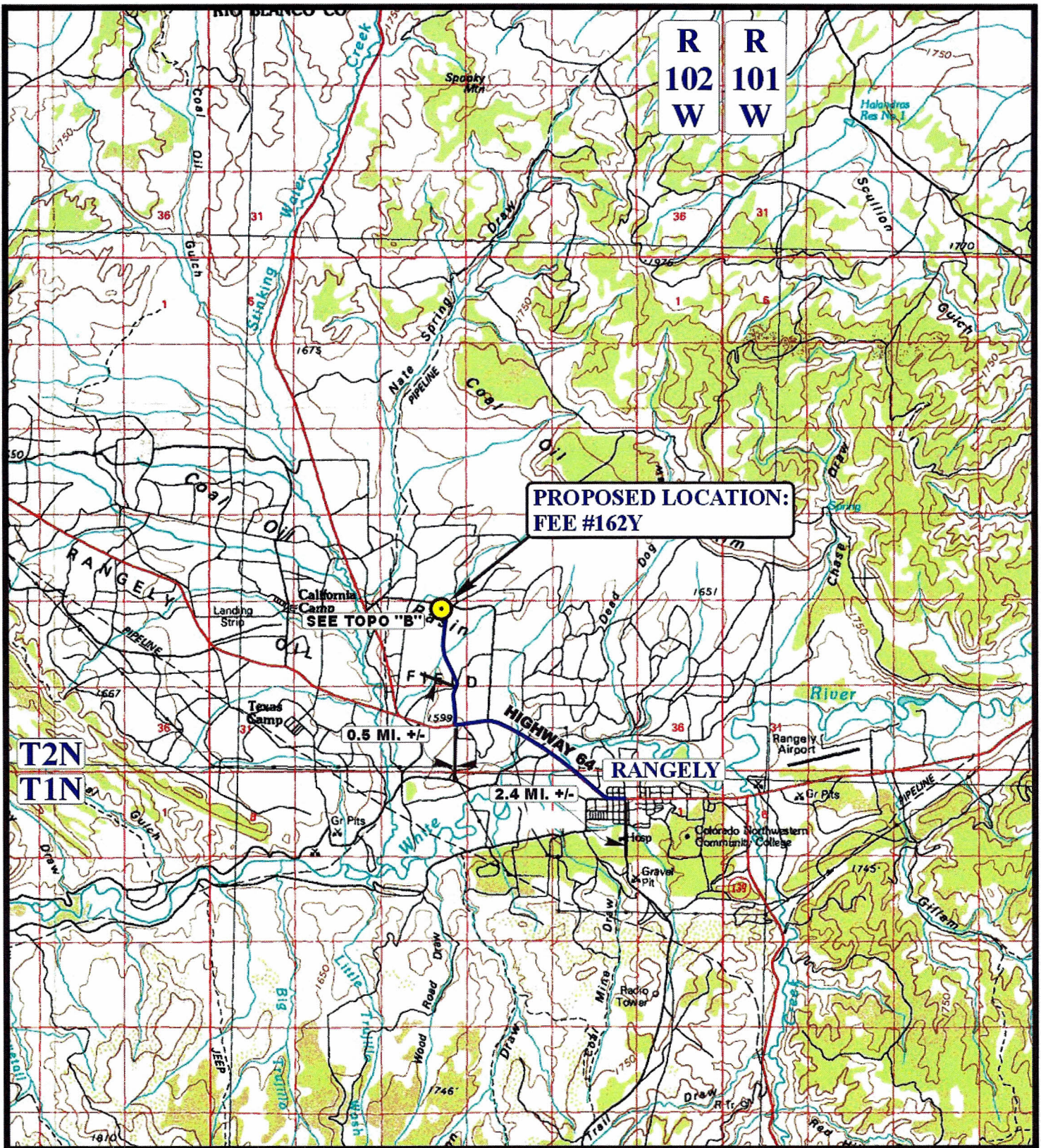
9. WELL SITE LAYOUT - See Figure #1

The White River Resource Area Manager shall be notified 24 hours in advance before any construction begins on the proposed location site.

Weldon's Construction (Bret Weldon 435-789-3324) company will be contracted to build well pad using graders, dozers and dump trucks, any extra gravels, sand, or road base will be acquired from Ace West Trucking Inc, 15672 US Hwy 64, Rangely 675-2753 gravel pits. Please see attached "Site Map and Site Specific Stormwater

BMP

| <u>Type</u> | <u>Comment</u> |
|--------------------------------|---|
| Wildlife | Powerlines will be designed to minimize raptor electrocutions by incorporating designs to minimize risks. The cutting pit will be fenced with 32" high woven wire to protect wildlife and domestic animals. Netting will be installed to prevent access by migratory birds. |
| Drilling/Completion Operations | A closed loop system will be implemented during drilling, using a cuttings catch pit, dewatering system, centrifuge system. Any skim oil will be truck to Chevron Main Water Plant (4 miles) and pipelined to an oil gathering collection station. |
| Construction | Chevron will ensure 110 percent secondary containment for any volume of fluids contained at the well site during the drilling and completion operations, including construction of a berm or diversion dike, collection trench, and the use of site grading to protect the nearby drainage wash. |
| Interim Reclamation | Any moisture content of the drill cuttings pit will be de-watered and at the time of closure the drill cuttings will meet the standards in table 910-1. The disturbed area not needed for well operation will be revegetated after the site has been properly prepared - recontouring the area to blend with surrounding topography. Broadcast certified seed using seed blend recommended by BLM, in fall (Sept 2011) seeding prior to prolonged ground frost. |
| Storm Water/Erosion Control | Top soil salvage and storage. Top soil will be stockpiled where no vehicle traffic will cross the mound. The stock piles will be protected from the wind and water erosion through the use of suitable weed free mulch and seeding. |
| Site Specific | This well site was selected to utilize one location for 2 directionally drilled wells, this location is located along an existing lease road. These two production wells will have two flowlines (using only one trench) to a centralized production facility offsite, no large haul trucks will be needed to collect produced fluids. There will be no holding tanks on this location. |
| Pre-Construction | The cuttings pit will be constructed to the BLM Gold Book standards. No portion of the drilling pit will be constructed on any fill material, the entire base of the pit will be in the cut. |
| Planning | Chevron trains all employees in safe work practices, good environmental stewardship, health and wellness issues and to ensure that proper personal protective equipment is available and is being used. Chevron has a up to date Spill Protection Control and Countermeasure Plan for the Rangely Field. Chevron has a zero tolerance policy regarding drug usage, with education and compliance programs to help reinforce these policies. |
| General Housekeeping | Any waste products will be handled by RN Industries, trash will be confined in a covered container. After the rig is off the location the well site will be cleaned and all refuse removed by Rangely Trash Service, and hauled to the approved landfill in Rio Blanco County. A portable toilet will be supplied for human waste. |



CHEVRON U.S.A., INC.

ADDENDUM TO LEGAL PLAT FOR

FEE #162Y

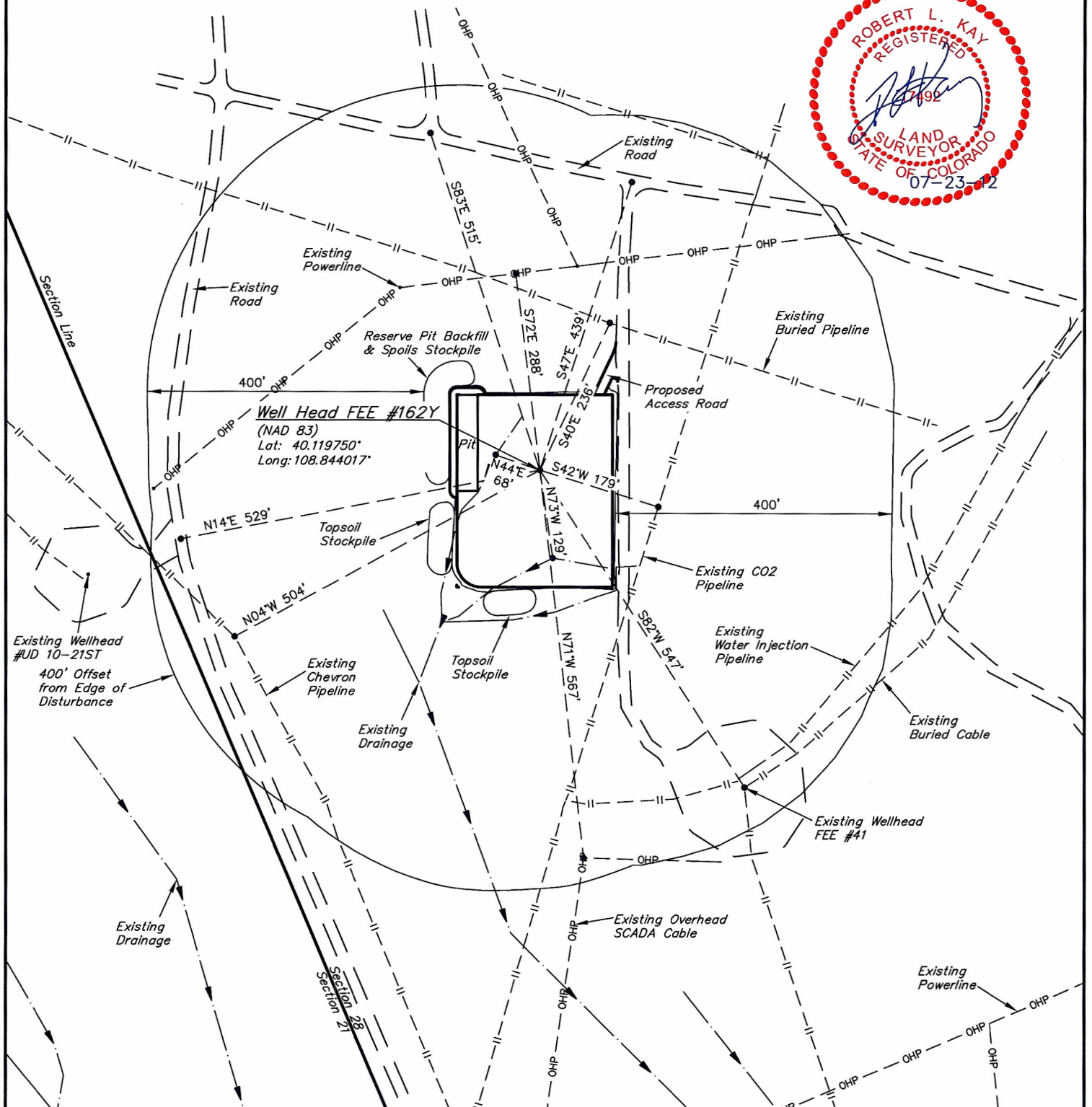
SECTION 28, T2N, R102W, 6th P.M.

566' FNL 1443' FEL

SCALE: 1" = 200'

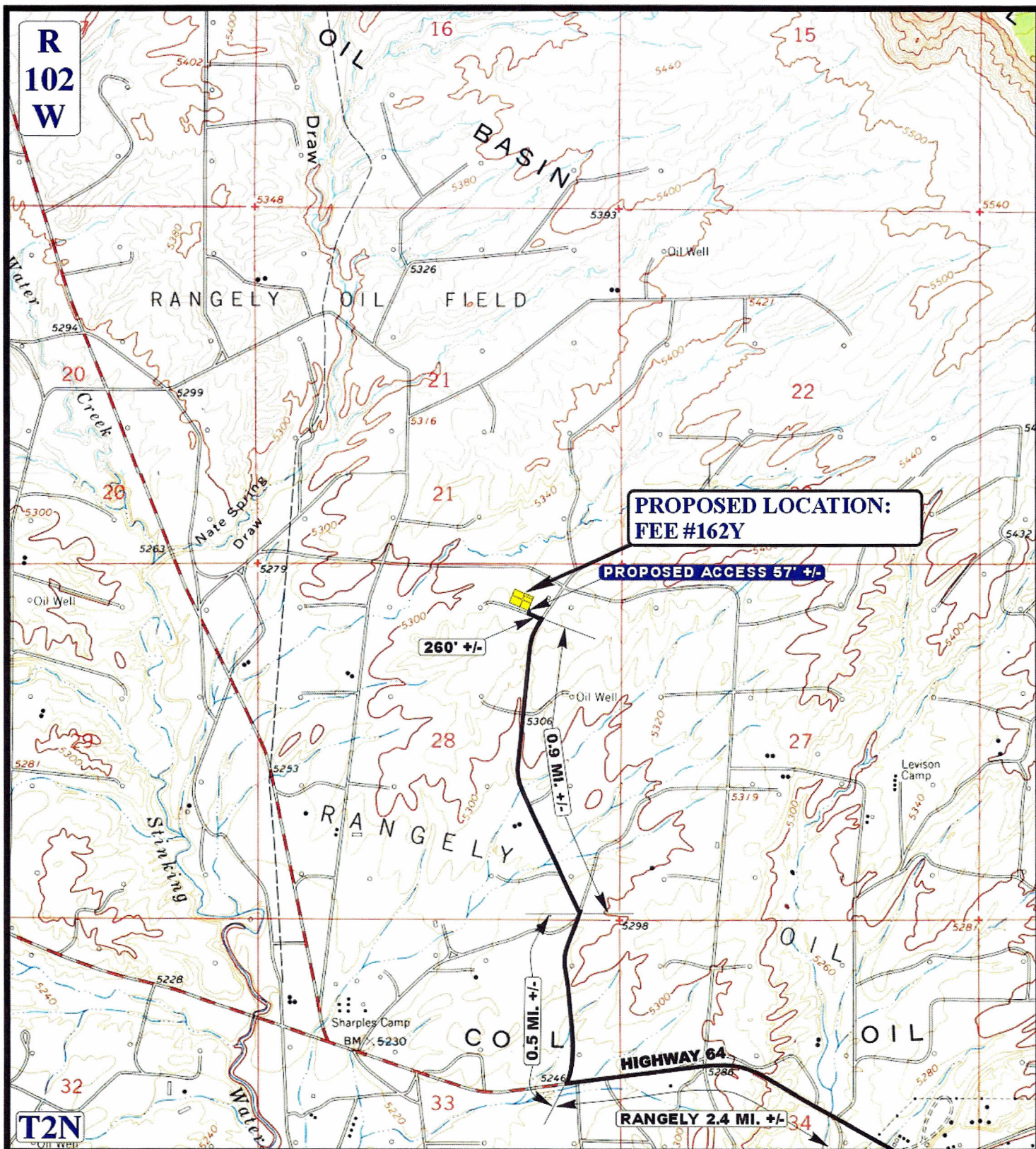
DATE: 07-23-12

DRAWN BY: M.D.



UINTAH ENGINEERING & LAND SURVEYING

85 So. 200 East * Vernal, Utah 84078 * (435) 789-1017



LEGEND:

EXISTING ROAD
 PROPOSED ACCESS ROAD



CHEVRON U.S.A., INC.

FEE #162Y
 SECTION 28, T2N, R102W, 6th P.M.
 566' FNL 1443' FEL



Uintah Engineering & Land Surveying
 85 South 200 East Vernal, Utah 84078
 (435) 789-1017 * FAX (435) 789-1813

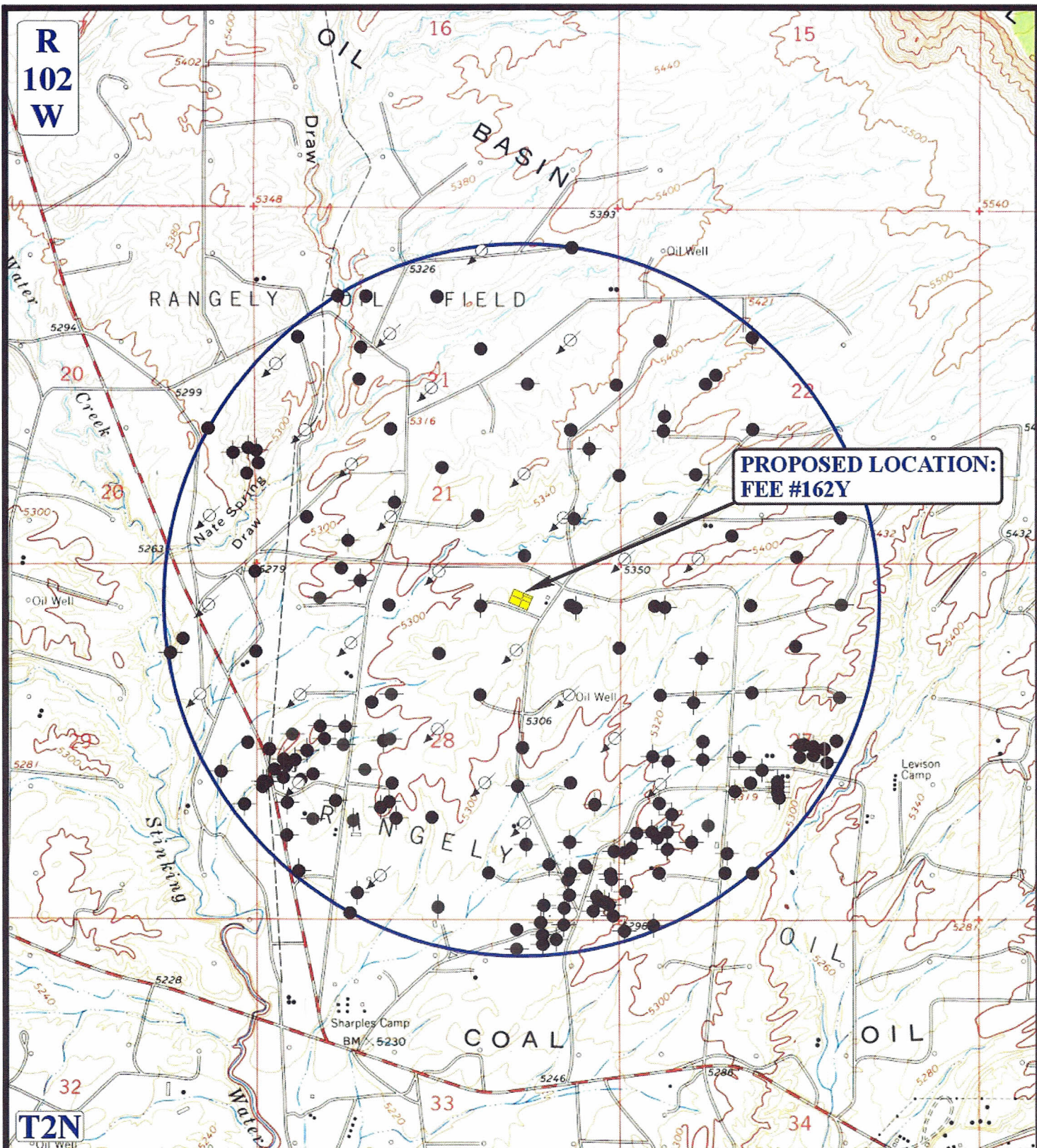
ACCESS ROAD
 MAP

07 20 12
 MONTH DAY YEAR

SCALE: 1" = 2000' DRAWN BY: J.L.G. REVISED: 00-00-00



R
102
W



PROPOSED LOCATION:
FEE #162Y

LEGEND:

- DISPOSAL WELLS
- PRODUCING WELLS
- SHUT IN WELLS
- WATER WELLS
- ABANDONED WELLS
- TEMPORARILY ABANDONED



CHEVRON U.S.A., INC.

FEE #162Y

SECTION 28, T2N, R102W, 6th P.M.

566' FNL 1443' FEL



Uintah Engineering & Land Surveying
85 South 200 East Vernal, Utah 84078
(435) 789-1017 * FAX (435) 789-1813

**TOPOGRAPHIC
MAP**

07 20 12
MONTH DAY YEAR

SCALE: 1" = 2000' DRAWN BY: J.L.G. REVISED: 00-00-00





CHEVRON U.S.A., INC.

TYPICAL RIG LAYOUT FOR

FEE #162Y

SECTION 28, T2N, R102W, 6th P.M.

566' FNL 1443' FEL

FIGURE #3

SCALE: 1" = 50'

DATE: 07-23-12

DRAWN BY: M.D.

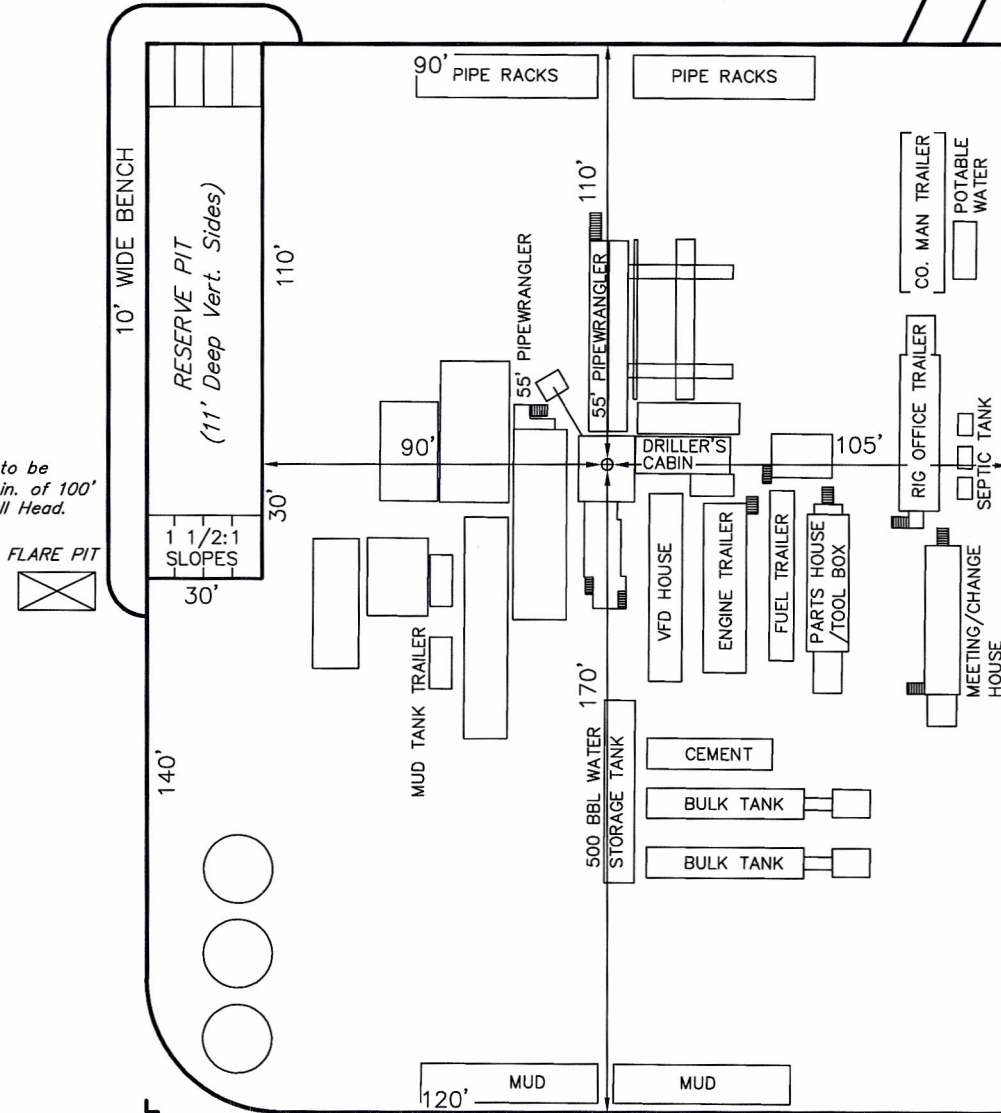
Total Pit Capacity
W/2' of Freeboard
= 5,800 Bbls.±
Total Pit Volume
= 1,510 Cu. Yds

Proposed
Access Road

Existing
Road



NOTE:
Flare Pit is to be
located a min. of 100'
from the Well Head.



UINTAH ENGINEERING & LAND SURVEYING

85 So. 200 East * Vernal, Utah 84078 * (435) 789-1017

85 So. 200 East * Vernal, Utah 84078 * (435) 789-1017

Management Plan (SWMP)" Site map indicates the topsoil stock pile area to be seeded with BLM approved mix, and placement of diversion ditch w/ check dams. Best Management Practices, are outlined on the SWMP, along with the estimated surface disturbance.

Please note there are no drilling rig anchors planned for this drilling location. Rig anchors will be installed after the well is drilled and the drilling rig leaves well site. Placement of the anchors to be determined by Benco Anchor Service Company based on well site soil conditions and the traffic flow to the new well and completion rig specifications.

10. PLANS FOR RESTORATION OF SURFACE

Plan for cutting pit reclamation – Cuttings will be buried in the cutting pit, with 3 feet of fill. Prior to burial of cuttings, any liquid oil or water will be trucked to the Chevron Main Water Plant. Test will be performed to insure soil meets COGCC 910-1 standards and all requirements stipulated in COGCC Rule 1003.d..

Clean up and rehabilitation operations will begin as soon as the well is completed and within the time frames and requirements established under COGCC Rules 1003 and 1004 for Interim and Final Reclamation.

Plan for interim reclamation– Interim reclamation consists of minimizing the footprint of disturbance by reclaiming those portions of the well site not needed for production operations. All disturbed areas affected by drilling or subsequent operations, except areas reasonably needed for production operations, shall be reclaimed as part of the interim reclamation process. The portion of the well site not needed for operations and safety purposes is to be re-graded to a final or intermediate contour that blends with the surrounding topography as much as possible. In addition, pad reclamation is accomplished by replacing stockpiled top soil, construction of sediment and erosion controls, and seeding of disturbed areas to reestablish cover vegetation. The access roads will be upgraded and maintained as necessary to prevent soil erosion, and accommodate year round traffic.

Sediment controls will typically dominate the early stages of reclaiming disturbed areas impacted by construction. As the reclamation work proceeds and the contour of the site are completed, more permanent structural and non-structural BMPs will be implemented to control erosion and re-establish vegetation.

Selection of BMPs is dependent on site specific conditions including soil types, topography, and other environmental factors including proximity to surface waters and surrounding vegetation. A summary of the BMPs typically utilized is provided in the attached Appendix. The attachment includes information on specific BMPs including where and when to use them, their limitations, along with construction details and maintenance requirements.

Re-vegetation efforts will include re-contouring disturbed areas not needed for well production to blend with surrounding topography and re-spreading topsoil to an adequate depth. The seedbed will be prepared by disking following the natural contour. Drill seed on contour at a depth no greater than 1/2 inch. In areas that cannot be drilled, broadcast at double the seeding rate and harrow seed into soil. Certified seed - BLM approved - as represented below - will be used..

| SEED KIND: ALKALINE SLOPES / CLAYEY SALTDDESERT MIX (Arkansas Valley Seed) | | | |
|--|-------|-------------------------------------|--------|
| Kind & Variety: | Pure% | Germ% | Origin |
| WESTERN W/G ABBIBA | 23.87 | 95 | WA |
| PUBESCENT W/G LUNA | 23.14 | 98 | SD |
| CRESTED W/G NORDAN | 19.33 | 88 | CAN |
| RUSSIAN WILD RYEGRASS, VINALL | 17.72 | 96 | CAN |
| ANNUAL SUNFLOWER | 12.32 | 92 | CO |
| Crop / Inert/ Weed | 3.63 | (see copy of seed bag tag attached) | |

Re-vegetation efforts will also include the treatment of weeds by a contracted weed sprayer, Rocky Mountain Weed Management, 970-675-5656. The site will be kept free of State listed A&B noxious weeds and weeds/invasive species up until the Final Reclamation of the location is attained and approved..

All Storm Water Discharge Permitting Regulations and BMP's currently required by the State of Colorado will be strictly complied with, including all inspection and ongoing BMP maintenance requirements. To minimize sedimentation of drainage channels and wetlands during the interim period between construction activity and final reclamation, temporary erosion and sediment control measures should be applied." Secondary containment

area will be utilized in chemical and product storage areas and engineered to handle 150% of calculated volumes per Chevron policy.

Plan for final reclamation: Following the production life of the well site, all production facilities will be removed and the site reclaimed and contoured to conform to the surrounding terrain. All excavations and pits must be closed by backfilling when they are dry and free of waste. The White River Resource Area Manager will be notified at least 24 hours prior to commencing reclamation work.

The well(s) will be plugged and abandoned in accordance with COGCC requirements to protect freshwater aquifers. Chevron will notify the WRFO 24 hours prior to any final reclamation activities. Rig anchors will be pulled and removed from location. The access road will be reshaped as closely as possible to the original contour, covered with topsoil, and reseeded.

Storm water BMPs will be utilized in the reclamation efforts to control sediment runoff and erosion. Selection of BMPs is dependent on site specific conditions including soil types, topography, and other environmental factors including proximity to surface waters and surrounding vegetation. A summary of the BMPs typically utilized is provided in the attached Appendix. The attachment includes information on specific BMPs including where and when to use them, their limitations, along with construction details and maintenance requirements.

The well pad will be restored and re-vegetated as soon as practicable. Topsoil is to be re-spread over the entire disturbed site to ensure successful re-vegetation. The top soiled site will be prepared to provide a seedbed for re-establishment of vegetation. The seedbed will be prepared by disking following the natural contour. Drill seed on contour at a depth no greater than 1/2 inch. Fall seeding must be completed after September 1, and prior to prolonged ground frost.

Final reclamation (COGCC Rule 1004) will be completed once a uniform vegetative cover has been established that reflects pre-disturbance or reference area forbs, shrubs, and grasses with a total percent plant cover of at least 80% of pre-disturbance levels.

11. SURFACE OWNERSHIP

A check of the records indicates that the surface owner is CHEVRON USA, Inc. 100 Chevron Rd, Rangely CO 81648, Jeff Roedell 970-675-3816 and Merit Energy Partners owns the surface 566' west of the well location in Section 29.

12. OTHER INFORMATION

a) The Chevron will contact either the petroleum engineer or petroleum engineering technician 24 hours prior to the following operations:

- Construction of well site
- spudding (including dry hole digger or rat hole rig)
- running and cementing of all casing strings
- pressure testing of BOPE or any casing string
- Surface reclamation work.
- commencing completion operations.

b) Chevron will be responsible for informing all persons who are associated with the project operations that they will be subject to prosecution for knowingly disturbing historic or archaeological sites, or for collecting artifacts. During operations, if discoveries of any cultural remains, monuments or sites, or any object of antiquity subject to the Antiquities Act of June, 1906 (34 Stat. 225; 16 U.S.C. Secs 431-433), the Archaeological Resources Protection Act of 1979 (PL 96-95), and 43 CFR, Part 3, operations will immediately cease and will be reported directly to the Area Manager. In cases where salvage excavation is necessary, the cost of such excavation shall be borne by the Operator, unless otherwise agreed upon. There are no known archeological, historic, or cultural sites in the immediate area. Much of the Unit area, over the past ninety three years, has been subjected to surface disturbance by roads, pipelines, and other producing surface facilities, and the probability of finding any artifactual remains or architecture of archeological significance is remote. c) Pursuant to 43 CFR 10.4(g) Chevron will notify the authorized officer (AO), by telephone, with written confirmation, immediately upon the discovery of human remains, funerary items, sacred objects, or objects of cultural patrimony. Further, pursuant to 43 CFR 10.4 (c) and (d), Chevron will stop activities in the vicinity of the discovery and protect it for 30 days or until notified to proceed by the authorized officer.

d) If paleontological materials (fossils) are uncovered during project activities, Chevron will immediately stop activities that might further disturb such materials, and contact the authorized officer (AO). The operator and the

authorized officer will consult and determine the best option for avoiding or mitigating paleontological site damage.

e) An H₂S Contingency Plan for this field is on file with the BLM. – Copy of the “Chevron Drilling – RWSU COC47675X Hydrogen Sulfide Contingency Plan” is included with this permit.