

T10N, R60W, 6th. P.M.

2011 2 1/2" Private Alum. Cap, 0.8' Below Ground, RLS #17492
Lat: 40.800628°
Long: 104.030658°

WHITTING OIL & GAS CORP.

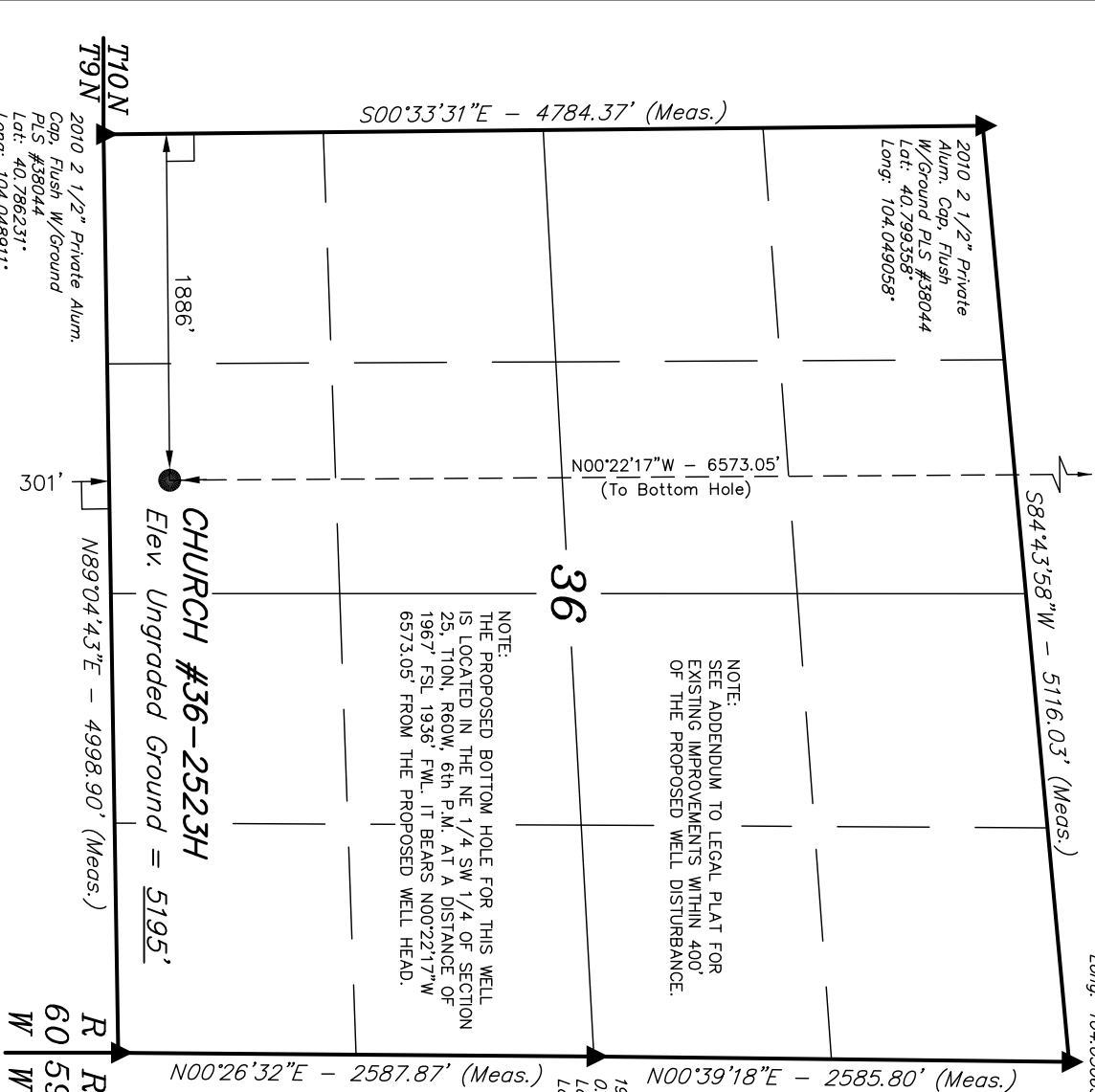
Well location, CHURCH #36-2523H, (SURFACE LOCATION) located as shown in the SE 1/4 SW 1/4 of Section 36, T10N, R60W, 6th. P.M., Weld County, Colorado.

BASIS OF ELEVATION

SPOT ELEVATION LOCATED AT THE NORTHEAST CORNER OF SECTION 2, T9N, R61W, 6th P.M. TAKEN FROM THE GROVER, SOUTH, QUADRANGLE, COLORADO, WELD COUNTY, 7.5 MINUTE QUAD (TOPOGRAPHIC MAP) PUBLISHED BY THE UNITED STATES DEPARTMENT OF THE INTERIOR, GEOLOGICAL SURVEY. SAID ELEVATION IS MARKED AS BEING 5043 FEET.

BASIS OF BEARINGS

BASIS OF BEARINGS IS A G.P.S. OBSERVATION.



NOTE:
THE PROPOSED BOTTOM HOLE FOR THIS WELL IS LOCATED IN THE NE 1/4 SW 1/4 OF SECTION 25, T10N, R60W, 6th P.M. AT A DISTANCE OF 1967' FSL 1936' FWL. IT BEARS N00°22'17\"W 6573.05' FROM THE PROPOSED WELL HEAD.

NOTE:
SEE ADDENDUM TO LEGAL PLAT FOR EXISTING IMPROVEMENTS WITHIN 400' OF THE PROPOSED WELL DISTURBANCE.

S00°33'31\"E - 4784.37' (Meas.)

N00°22'17\"W - 6573.05'
(To Bottom Hole)

S84°43'58\"W - 5116.03' (Meas.)

N00°39'18\"E - 2585.80' (Meas.)

1917 2 1/2" Brass Cap,
0.5' Above Ground
Lat: 40.793533°
Long: 104.030781°

N00°26'32\"E - 2587.87' (Meas.)

1917 3 1/2" Brass Cap,
0.5' Above Ground
Lat: 40.786433°
Long: 104.030867°

T10N
2010 2 1/2" Private Alum.
Cap, Flush W/Ground
PLS #38044
Lat: 40.786231°
Long: 104.048911°

CHURCH #36-2523H
Elev. Ungraded Ground = 5195'

R 60
W 59

LEGEND:

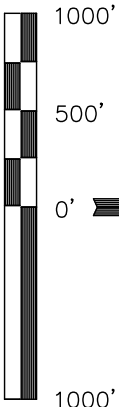
- 90° SYMBOL
- PROPOSED WELL HEAD.
- SECTION CORNERS LOCATED.

PDOP = 1.8

REVISED: 07-26-11

THIS IS TO CERTIFY THAT THE ABOVE PLAT WAS PREPARED FROM FIELD NOTES OF ACTUAL SURVEYS MADE BY ME OR UNDER MY SUPERVISION AND THAT THE SAME ARE TRUE AND CORRECT TO THE BEST OF MY KNOWLEDGE AND BELIEF.

REGISTERED LAND SURVEYOR
REGISTRATION NUMBER 14922
STATE OF COLORADO
07-26-11



CERTIFICATE

UTAH ENGINEERING & LAND SURVEYING
85 SOUTH 200 EAST - VERNAL, UTAH 84078
(435) 789-1017

SCALE 1" = 1000'	DATE SURVEYED: 06-22-11	DATE DRAWN: 07-06-11
PARTY D.N. C.Z. Z.L.	REFERENCES G.L.O. PLAT	FILE WHITTING OIL & GAS CORP.
WEATHER WARM		

T10N, R60W, 6th. P.M.

2010 UELS Alum.
Cap
Lat: 40.814853°
Long: 104.030467°

WHITTING OIL & GAS CORP.

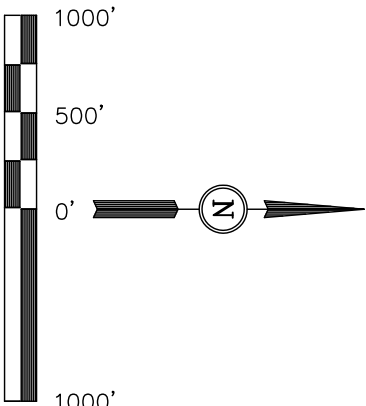
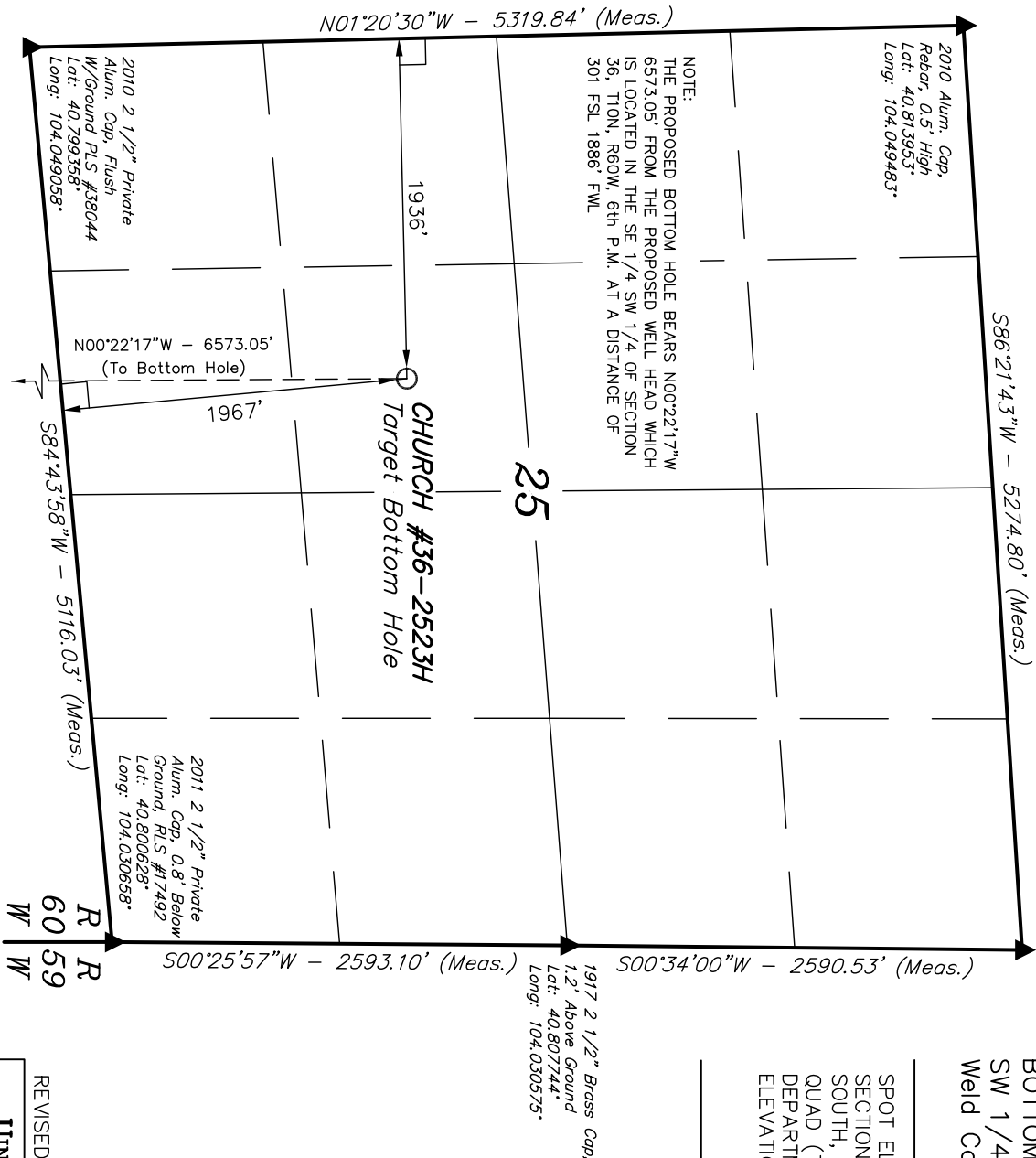
Well location, CHURCH #36-2523H, (TARGET BOTTOM HOLE) located as shown in the NE 1/4 SW 1/4 of Section 25, T10N, R60W, 6th. P.M., Weld County, Colorado.

BASIS OF ELEVATION

SPOT ELEVATION LOCATED AT THE NORTHEAST CORNER OF SECTION 2, T9N, R61W, 6th P.M. TAKEN FROM THE GROVER SOUTH, QUADRANGLE, COLORADO, WELD COUNTY, 7.5 MINUTE QUAD (TOPOGRAPHIC MAP) PUBLISHED BY THE UNITED STATES DEPARTMENT OF THE INTERIOR, GEOLOGICAL SURVEY. SAID ELEVATION IS MARKED AS BEING 5043 FEET.

BASIS OF BEARINGS

BASIS OF BEARINGS IS A G.P.S. OBSERVATION.



CERTIFICATE
THIS IS TO CERTIFY THAT THE ABOVE PLAT WAS PREPARED FROM FIELD NOTES OF ACTUAL SURVEYS MADE BY ME OR UNDER MY SUPERVISION AND THAT THE SAME ARE TRUE AND CORRECT TO THE BEST OF MY KNOWLEDGE AND BELIEF.

REGISTERED LAND SURVEYOR
REGISTRATION NO. 14922
STATE OF COLORADO
07-26-11

REVISED: 07-26-11

UINTAH ENGINEERING & LAND SURVEYING
85 SOUTH 200 EAST - VERNAL, UTAH 84078
(435) 789-1017

NAD 83 (TARGET BOTTOM HOLE)	
LATITUDE = 40°48'18.90" (40.805250)	
LONGITUDE = 104°02'32.04" (104.042233)	
NAD 27 (TARGET BOTTOM HOLE)	
LATITUDE = 40°48'18.95" (40.805264)	
LONGITUDE = 104°02'30.23" (104.041731)	
STATE PLANE NAD 83 COLORADO NORTH	
N: 1539516.70 E: 3403557.83	
STATE PLANE NAD 27 COLORADO NORTH	
N: 539514.61 E: 2403708.02	

SCALE 1" = 1000'	DATE SURVEYED: 06-22-11	DATE DRAWN: 07-06-11
PARTY D.N. C.Z. Z.L.	REFERENCES G.L.O. PLAT	FILE
WEATHER WARM		WHITTING OIL & GAS CORP.

LEGEND:

- 90° SYMBOL
- PROPOSED WELL HEAD.
- SECTION CORNERS LOCATED.