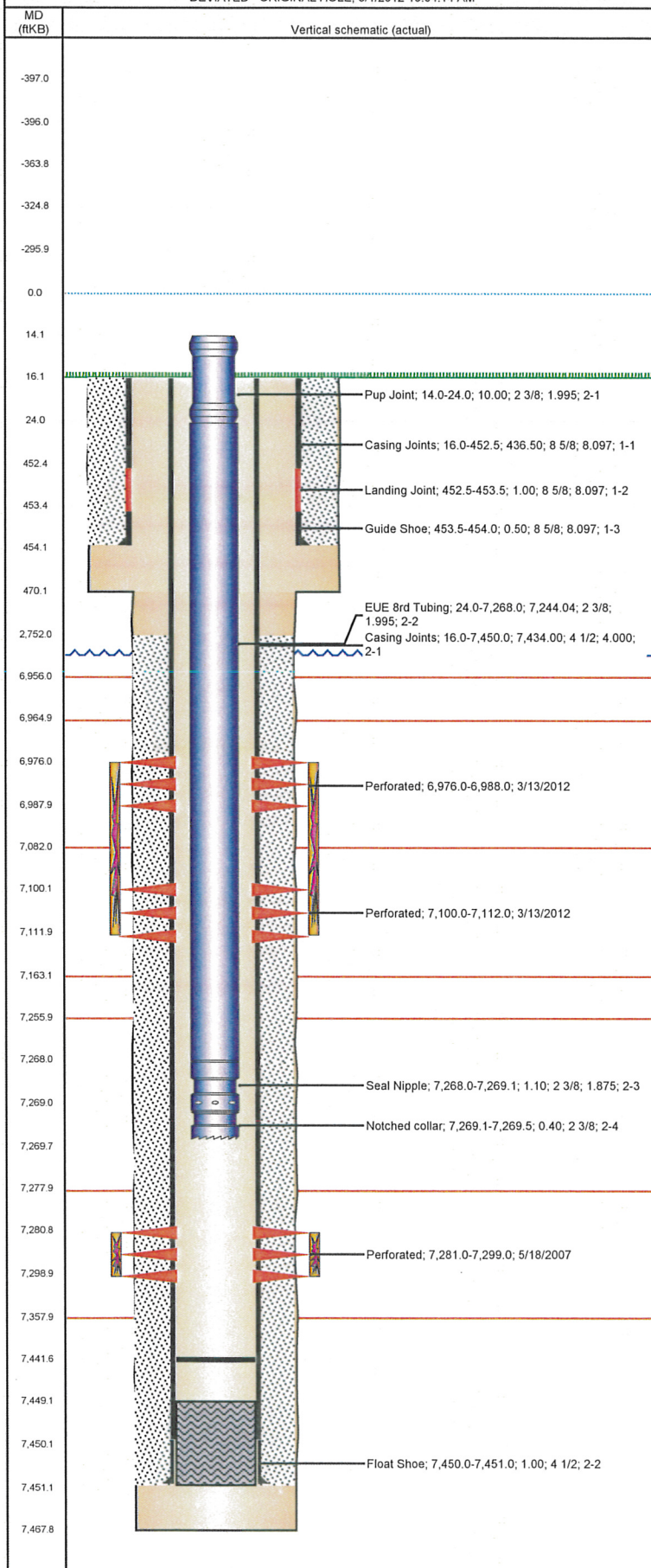


# Frac Wellbore Schematic Report

Well Name: MONFORT E30-03

DEVIATED - ORIGINAL HOLE, 8/1/2012 10:04:14 AM



## Well Header

API 05-123-23705	Business Unit WATTENBERG	District 15	Well Config DEVIATED
Original KB Elevation (ft) 4,749.00	KB - GL / MSL (ftKB) 16.00	Spud Date 4/11/2007	P & A Date
Comment			

## Directions To Well

HWY 85 & WCR 66, WEST 0.7, SOUTH 0.2 INTO.

## Current PBTD (ftKB)

ORIGINAL HOLE - 7,441.5

## Surface Location (Congressional)

Quarter 1	Quarter 2	Quarter 3	Quarter 4	Section	Township	Twnshp N...	Range	Rng E/W Dir
		NW	NW	30	6	N	65	W

## Bottom Hole Location

North-South Distance (ft)	From N or S Line	East-West Distance (ft)	From E or W Line
666.0	N	1,880.0	W

## Plug Back Total Depths

Date	Depth (ftKB)	Method	Com
4/15/2007	7,449.0	CASING TALLY	FLOAT COLLAR
5/3/2007	7,396.0	CASED HOLE LOG	DEPTH LOGGER

## Wellbore Sections

Section Des	Size (in)	Act Top (ftKB)	Act Btm (ftKB)
SURFACE	12 1/4	16.0	470.0
PRODUCTION	7 7/8	470.0	7,468.0

## Zone Statuses

Zone Name	Status Date	Status	Job
CODELL	7/30/2007	PR	DRILLING/COMPLETION - ORIGINAL, 4/11/2007 00:00
CODELL	3/15/2012	PR	RE-FRAC & RECOMPLETE, 3/1/2012 06:00
NIOBRARA	3/15/2012	PR	RE-FRAC & RECOMPLETE, 3/1/2012 06:00

## Casing Strings

Csg Des	Run Date	OD (in)	Wt/Len (lb/ft)	Grade	Top (ftKB)	Set Depth (ftKB)
Surface	4/11/2007	8 5/8	24.00	J-55	16.0	454.0
Production	4/15/2007	4 1/2	11.60	M-80	16.0	7,451.0

## Cement

Des	Top (ftKB)	Btm (ftKB)
SURFACE CASING CEMENT	16.0	454.0
PRODUCTION CASING CEMENT	2,752.0	7,451.0

## Tubing Components

Item Des	OD (in)	Wt (lb/ft)	Grade	Jts	Len (ft)
Pup Joint	2 3/8	4.70	J-55	1	10.00
EUE 8rd Tubing	2 3/8	4.70	J-55	238	7,244.04
Seal Nipple	2 3/8			1	1.10
Notched collar	2 3/8	4.70	J-55	1	0.40

## Perforation Data

Zone	Bnch/St g	Entered Shot Total	Top (ftKB)	Btm (ftKB)	Date
NIOBRARA, ORIGINAL HOLE	A	24	6,976.0	6,988.0	3/13/2012
NIOBRARA, ORIGINAL HOLE	B	24	7,100.0	7,112.0	3/13/2012
CODELL, ORIGINAL HOLE		72	7,281.0	7,299.0	5/18/2007

## Stimulations & Treatments

Bnch/Stg	Date	Zone	Primary Job Type
	6/4/2007	CODELL, ORIGINAL HOLE	DRILLING/COMPLETION - ORIGINAL

## Comment

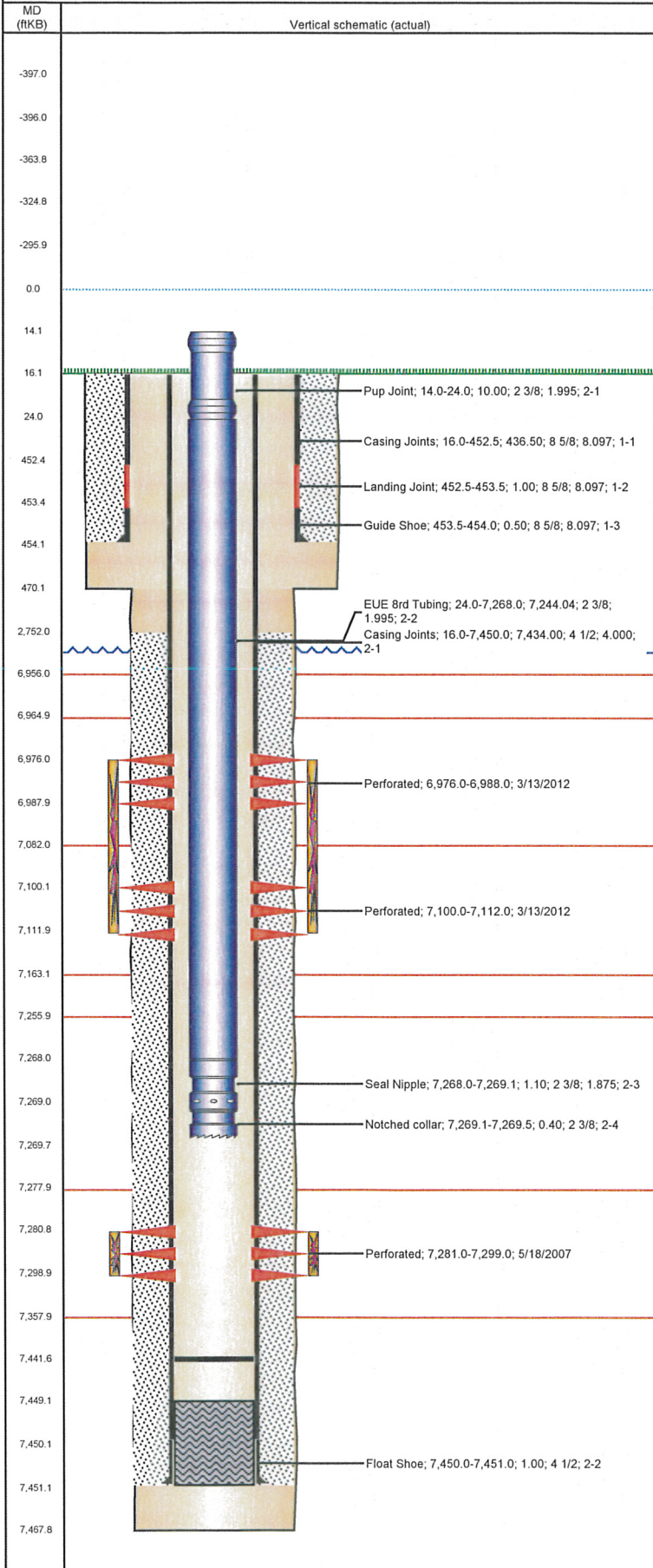
Final frac of 3 on pad for day

Total Add Amount	Total Clean Volume...	Vol Slurry Tot (gal)	Vol Gas Tot (MCF)
Proppant Ottawa 258060 lb; Proppant SB Excel 12000 lb		128982.00	
Avg Treat Pressure (psi)	Max Treat Pressure (psi)	Avg Treat Rate (bbl/min)	Max Treat Rate (bbl/min)
7,689.0	7,999.0	18.90	19.61



**Well Name: MONFORT E30-03**

DEVIATED - ORIGINAL HOLE, 8/1/2012 10:04:14 AM



## Stimulations & Treatments

Bnch/Stg	Date	Zone	Primary Job Type		
	3/13/2012	CODELL, ORIGINAL HOLE	RE-FRAC & RECOMPLETE		
Comment					
(CODELL)- BREAK 2491 @ 4.0, ISIP 2582, 5 MIN 1153. POST ISIP 4147 POST 5MIN 3643, AVER VISC 25.5, AVER TEMP 69.3, AVER PH 10.32. CROSSOVER ON HYDRO LEFT OPEN, CAME OFFLINE TO GEL UP AGAIN. INCREASED RATE TO 18 BPM AND LOADING TO 26 DUE TO LEAK OFF. TREATMENT WENT WELL NO OTHER ISSUES TO REPORT.					
Total Add Amount		Total Clean Volume...	Vol Slurry Tot (gal)	Vol Gas Tot (MCF)	
Proppant Ottawa		132144.61	143320.38		
246225.402 lb					
Avg Treat Pressure (psi)		Max Treat Pressure (psi)	Avg Treat Rate (bbl/min)	Max Treat Rate (bbl/min)	
4,107.0		4,278.0	18.62	18.96	
Bnch/Stg	Date	Zone	Primary Job Type		
	3/13/2012	NIOBRARA, ORIGINAL HOLE	RE-FRAC & RECOMPLETE		
Comment					
(NIOBRARA)- BREAK 3874 @ 1.8, ISIP 3485, POST ISIP 4042, POST 5 MIN 3775, AVER VISC 18.9, AVER TEMP 71.4, AVER PH 10.38. TREATMENT WENT WELL NO ISSUES TO REPORT.					
Total Add Amount		Total Clean Volume...	Vol Slurry Tot (gal)	Vol Gas Tot (MCF)	
Proppant Ottawa		153468.42	164668.14		
246931.002 lb					
Avg Treat Pressure (psi)		Max Treat Pressure (psi)	Avg Treat Rate (bbl/min)	Max Treat Rate (bbl/min)	
4,368.0		4,519.0	40.24	40.75	
Other In Hole					
Run Date	Des		OD (in)	Top (ftKB)	Btm (ftKB)
Logs					
Date	Type		Top (ftKB)	Btm (ftKB)	
5/3/2007	CBL/CCL/GR		16.0	7,389.0	
5/3/2007	PULSED NEUTRON		400.0	7,386.0	