
OXY GRAND JUNCTION EBUSINESS

**Cascade Creek 697-05-65
GRAND VALLEY
Colorado**

Cement Surface Casing
15-Apr-2012

Post Job Report

The Road to Excellence Starts with Safety

Sold To #: 344034	Ship To #: 344034	Quote #:	Sales Order #: 9416005
Customer: OXY GRAND JUNCTION EBUSINESS		Customer Rep: Rosser, Terry	
Well Name: Cascade Creek	Well #: 697-05-65	API/UWI #: 05-045-20962	
Field: GRAND VALLEY	City (SAP): ADDISON	County/Parish:	State: Colorado
Lat: N 39.544 deg. OR N 39 deg. 32 min. 37.536 secs.		Long: W 108.246 deg. OR W -109 deg. 45 min. 12.636 secs.	
Contractor: H&P 353		Rig/Platform Name/Num: H&P 353	
Job Purpose: Cement Surface Casing			
Well Type: Development Well		Job Type: Cement Surface Casing	
Sales Person: HIMES, JEFFREY	Srvc Supervisor: REEVES, BRANDON	MBU ID Emp #: 287883	

Job Personnel

HES Emp Name	Exp Hrs	Emp #	HES Emp Name	Exp Hrs	Emp #	HES Emp Name	Exp Hrs	Emp #
DOUT, JACOB J	11.0	430298	PARKER, BRANDON	11.0	503646	REEVES, BRANDON W	11.0	287883
SIMINEO, JEROD M	11.0	479954						

Equipment

HES Unit #	Distance-1 way	HES Unit #	Distance-1 way	HES Unit #	Distance-1 way	HES Unit #	Distance-1 way
10001431	120 mile	10533645	120 mile	10567589C	120 mile	10897797	120 mile
11139328	120 mile	11583931	120 mile	11808829	120 mile	4901	120 mile
6543	120 mile						

Job Hours

Date	On Location Hours	Operating Hours	Date	On Location Hours	Operating Hours	Date	On Location Hours	Operating Hours
04/14/2012	2	0	04/15/2012	9	4			
TOTAL			Total is the sum of each column separately					

Job

Formation Name	Formation Depth (MD)	Top	Bottom	Form Type	Job depth MD	Job Depth TVD	Water Depth	Perforation Depth (MD)	From	To
				BHST	2706. ft	2706. ft				

Job Times

Date	Time	Time Zone
14 - Apr - 2012	15:30	MST
14 - Apr - 2012	20:45	MST
15 - Apr - 2012	05:19	MST
15 - Apr - 2012	08:53	MST
15 - Apr - 2012	00:00	MST

Well Data

Description	New / Used	Max pressure psig	Size in	ID in	Weight lbm/ft	Thread	Grade	Top MD ft	Bottom MD ft	Top TVD ft	Bottom TVD ft
-------------	------------	-------------------	---------	-------	---------------	--------	-------	-----------	--------------	------------	---------------

Sales/Rental/3rd Party (HES)

Description	Qty	Qty uom	Depth	Supplier
PLUG,CMTG,TOP,9 5/8,HWE,8.16 MIN/9.06 MA	1	EA		

Tools and Accessories

Type	Size	Qty	Make	Depth	Type	Size	Qty	Make	Depth	Type	Size	Qty	Make
Guide Shoe					Packer					Top Plug	9.625"	1	
Float Shoe					Bridge Plug					Bottom Plug			
Float Collar					Retainer					SSR plug set			
Insert Float										Plug Container	9.625"	1	
Stage Tool										Centralizers			

Miscellaneous Materials

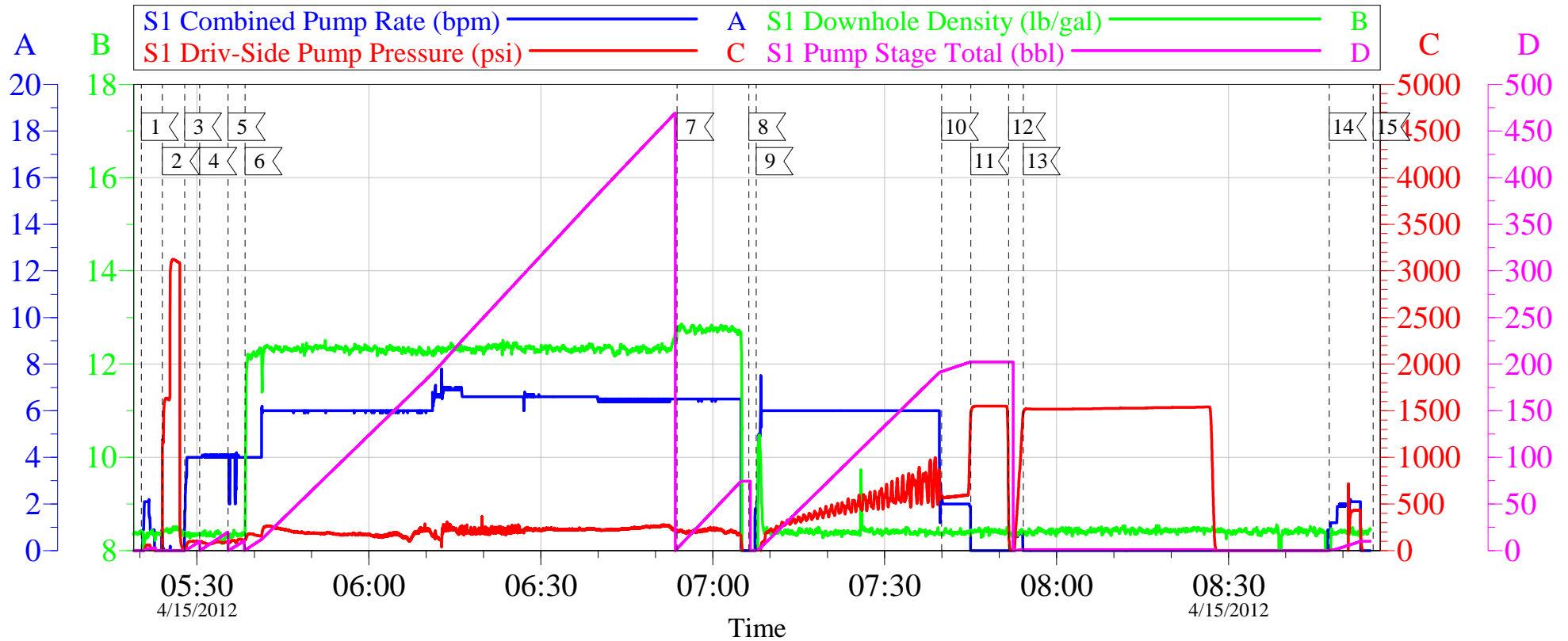
Gelling Agt	Conc	Surfactant	Conc	Acid Type	Qty	Conc	%
Treatment Fld	Conc	Inhibitor	Conc	Sand Type	Size		Qty

Fluid Data

Stage/Plug #: 1									
Fluid #	Stage Type	Fluid Name	Qty	Qty uom	Mixing Density lbm/gal	Yield ft3/sk	Mix Fluid Gal/sk	Rate bbl/min	Total Mix Fluid Gal/sk

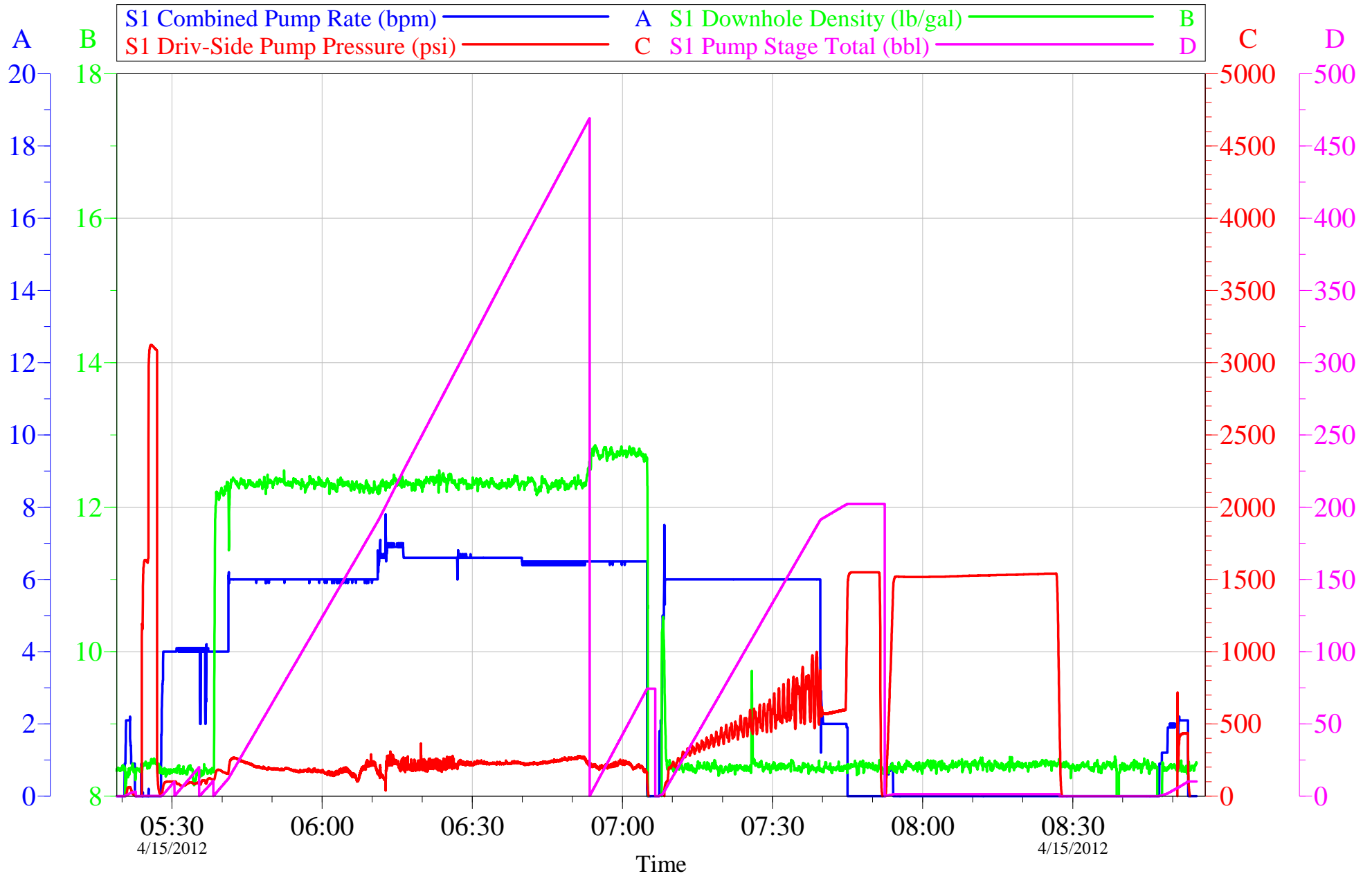
1	Fresh Water Spacer		10.00	bbl	8.33	.0	.0	.0	
2	Gel Water Spacer		20.00	bbl	8.34	.0	.0	.0	
0.25 gal/bbl		LGC-36 UC, BULK (101582749)							
3	Fresh Water Spacer		10.00	bbl	8.33	.0	.0	.0	
4	Lead Cement	HALCEM (TM) SYSTEM (452986)	1160.0	sacks	12.3	2.15	11.83	.0	11.83
11.83 Gal		FRESH WATER							
5	Tail Cement	VERSACEM (TM) SYSTEM (452010)	160.0	sacks	12.8	2.07	10.67	.0	10.67
10.67 Gal		FRESH WATER							
6	Fresh Water Displacement		202	bbl	8.34	.0	.0	.0	
7	Topout Cement	HALCEM (TM) SYSTEM (452986)	0	sacks	12.5	1.97	10.96		10.96
10.96 Gal		FRESH WATER							
Calculated Values		Pressures		Volumes					
Displacement	205.6	Shut In: Instant		Lost Returns		Cement Slurry	503.2	Pad	
Top Of Cement	SURFACE	5 Min		Cement Returns	190	Actual Displacement	202	Treatment	
Frac Gradient		15 Min		Spacers	40	Load and Breakdown		Total Job	
Rates									
Circulating		Mixing	6	Displacement	6	Avg. Job	6		
Cement Left In Pipe	Amount	46.60 ft	Reason	Shoe Joint					
Frac Ring # 1 @	ID	Frac ring # 2 @	ID	Frac Ring # 3 @	ID	Frac Ring # 4 @	ID		
The Information Stated Herein Is Correct				Customer Representative Signature					

OXY 9 5/8" SURFACE



Customer: OXY	Job Date: 15-Apr-2012	Sales Order #: 9416005
Well Description: CC 697-05-65	Job Type: SURFACE	ADC Used: YES
Supervisor: BRANDON REEVES	Company Rep: TERRY ROSSER	Elite/Operator: 4/JACOB DOUT

OXY 9 5/8" SURFACE



Customer: OXY	Job Date: 15-Apr-2012	Sales Order #: 9416005
Well Description: CC 697-05-65	Job Type: SURFACE	ADC Used: YES
Supervisor: BRANDON REEVES	Company Rep: TERRY ROSSER	Elite/Operator: 4/JACOB DOUT

OptiCem v6.4.4
15-Apr-12 09:12

The Road to Excellence Starts with Safety

Sold To #: 344034	Ship To #: 344034	Quote #:	Sales Order #: 9416005
Customer: OXY GRAND JUNCTION EBUSINESS		Customer Rep: Rosser, Terry	
Well Name: Cascade Creek	Well #: 697-05-65	API/UWI #: 05-045-20962	
Field: GRAND VALLEY	City (SAP): ADDISON	County/Parish:	State: Colorado
Legal Description:			
Lat: N 39.544 deg. OR N 39 deg. 32 min. 37.536 secs.		Long: W 108.246 deg. OR W -109 deg. 45 min. 12.636 secs.	
Contractor: H&P 353		Rig/Platform Name/Num: H&P 353	
Job Purpose: Cement Surface Casing			Ticket Amount:
Well Type: Development Well		Job Type: Cement Surface Casing	
Sales Person: HIMES, JEFFREY		Srv Supervisor: REEVES, BRANDON	MBU ID Emp #: 287883

Activity Description	Date/Time	Cht #	Rate bbl/min	Volume bbl		Pressure psig		Comments
				Stage	Total	Tubing	Casing	
Call Out	04/14/2012 15:30							
Pre-Convoy Safety Meeting	04/14/2012 18:25							
Arrive at Location from Service Center	04/14/2012 20:45							
Assessment Of Location Safety Meeting	04/15/2012 01:00							
Other	04/15/2012 01:40							SPOT EQUIPMENT
Pre-Rig Up Safety Meeting	04/15/2012 02:00							
Rig-Up Equipment	04/15/2012 02:20							
Pre-Job Safety Meeting	04/15/2012 04:30							
Start Job	04/15/2012 05:19							TD-2721' TP-2706' SJ-46.60' MW-9.4# HOLE-14 3/4" CASING-9 5/8" 36#
Test Lines	04/15/2012 05:24						3100.0	
Pump Spacer 1	04/15/2012 05:27		4	10			100.0	FRESH WATER SPACER
Pump Spacer 2	04/15/2012 05:30		4	20			95.0	GEL WATER SPACER
Pump Spacer 1	04/15/2012 05:35		4	10			120.0	FRESH WATER SPACER
Pump Lead Cement	04/15/2012 05:38		6	444.2			260.0	1160 SKS. @ 12.3# 2.15 YIELD 11.83 WRQ. ESTABLISHED CIRCULATION 255 BBLs. INTO LEAD CEMENT.
Pump Tail Cement	04/15/2012 06:53		6	59			225.0	160 SKS. @ 12.8# 2.07 YIELD 10.67 WRQ.

Activity Description	Date/Time	Cht #	Rate bbl/min	Volume bbl		Pressure psig		Comments
				Stage	Total	Tubing	Casing	
Drop Top Plug	04/15/2012 07:06							
Pump Displacement	04/15/2012 07:08		6				760.0	FRESH WATER DISPLACEMENT
Slow Rate	04/15/2012 07:40		2	190			550.0	
Bump Plug	04/15/2012 07:45		2	202			1575.0	PLUG LANDED
Check Floats	04/15/2012 07:51							FLOATS HELD
Pressure Test	04/15/2012 07:52		0.5				1520.0	PRESSURE TEST THE CASING TO 1520 PSI. FOR 30 MINUTES.
Circulate Well	04/15/2012 08:47		2	10			440.0	CIRCULATE PARASITE STRING WITH 10 BBLS. OF SUGAR WATER.
End Job	04/15/2012 08:53							WELL WAS CIRCULATED BEFORE STARTING THE JOB. PIPE WAS NOT RECIPROCATED, PUMPED THE JOB OFFLINE. CIRCULATED 190 BBLS. OF CEMENT TO SURFACE.
Rig-Down Equipment	04/15/2012 09:15							THANKS FOR USING HALLIBURTON. BRANDON REEVES AND CREW.

Sales Order #: 9416005	Line Item: 10	Survey Conducted Date: 4/15/2012
Customer: OXY GRAND JUNCTION EBUSINESS		Job Type (BOM): CMT SURFACE CASING BOM
Customer Representative: TERRY ROSSER		API / UWI: (leave blank if unknown)
Well Name: Cascade Creek		Well Number: 697-05-65
Well Type: DEVELOP	Well Country:	
H2S Present: No	Well State:	Well County:

Dear Customer,

We hope that you were satisfied with the service quality of this job performed by Halliburton. It is the aim of our management and service personnel to deliver equipment and service of a standard unmatched in the service sector of the energy industry.

Please take the time to let us know if our performance met with your satisfaction. Please be as critical as possible to ensure we constantly improve our service. Your comments are of great value to us and are intended for the exclusive use of Halliburton.

CUSTOMER SATISFACTION SURVEY

CATEGORY	CUSTOMER SATISFACTION RESPONSE	
Survey Conducted Date	The date the survey was conducted	4/15/2012
Survey Interviewer	The survey interviewer is the person who initiated the survey.	BRANDON REEVES (HBT9414)
Customer Participation	Did the customer participate in this survey? (Y/N)	Yes
Customer Representative	Enter the Customer representative name	TERRY ROSSER
HSE	Was our HSE performance satisfactory? Circle Y or N	Yes
Equipment	Were you satisfied with our Equipment? Circle Y or N	Yes
Personnel	Were you satisfied with our people? Circle Y or N	Yes
Customer Comment	Customer's Comment	

CUSTOMER SIGNATURE

Sales Order #: 9416005	Line Item: 10	Survey Conducted Date: 4/15/2012
Customer: OXY GRAND JUNCTION EBUSINESS		Job Type (BOM): CMT SURFACE CASING BOM
Customer Representative: TERRY ROSSER		API / UWI: (leave blank if unknown)
Well Name: Cascade Creek		Well Number: 697-05-65
Well Type: DEVELOP	Well Country:	
H2S Present: No	Well State:	Well County:

KEY PERFORMANCE INDICATORS

General	
Survey Conducted Date The date the survey was conducted	4/15/2012

Cementing KPI Survey	
Type of Job Select the type of job. (Cementing or Non-Cementing)	0
Select the Maximum Deviation range for this Job What is the highest deviation for the job you just completed? This may not be the maximum well deviation.	Deviated
Total Operating Time (hours) Total Operating Hours Including Rig-up, Pumping, Rig-down. Enter in decimal format.	5
HSE Incident, Accident, Injury HSE Incident, Accident, Injury. This should be recordable incidents only.	No
Was the job purpose achieved? Was the job delivered correctly as per customer agreed design?	Yes
Operating Hours (Pumping Hours) Total number of hours pumping fluid on this job. Enter in decimal format.	3
Customer Non-Productive Rig Time (hrs) Lost time due to Halliburton in the start, execution, or completion of an ordered service or product, or delays in a follow-on service. Enter in decimal format. 0 if none.	0
Type of Rig Classification Job Was Performed Type Of Rig (classification) Job Was Performed On	Drilling Rig (Portable)
Number Of JSAs Performed Number Of Jsas Performed	6
Number of Unplanned Shutdowns Unplanned shutdown is when injection stops for any period of time.	0
Was this a Primary Cement Job (Yes / No)	Yes

Sales Order #: 9416005	Line Item: 10	Survey Conducted Date: 4/15/2012
Customer: OXY GRAND JUNCTION EBUSINESS		Job Type (BOM): CMT SURFACE CASING BOM
Customer Representative: TERRY ROSSER		API / UWI: (leave blank if unknown)
Well Name: Cascade Creek		Well Number: 697-05-65
Well Type: DEVELOP	Well Country:	
H2S Present: No	Well State:	Well County:

Primary Cement Job= Casing job, Liner job, or Tie-back job.	
Did We Run Wiper Plugs? Did We Run Top And Bottom Casing Wiper Plugs?	Top
Mixing Density of Job Stayed in Designed Density Range (0-100%) Density Range defined as +/- .20 ppg. Calculation: Total BBLs cement mixed at designed density divided by total BBLs of cement multiplied by 100	95
Was Automated Density Control Used? Was Automated Density Control (ADC) Used ?	Yes
Pump Rate (percent) of Job Stayed At Designed Pump Rate Pump Rate range defined as +/- 1bbl/min. Calculation: Total BBLs of fluid pumped at the designed rate divided by Total BBLs of fluid pumped, multiplied by 100	98
Nbr of Remedial Sqz Jobs Rqd - Competition Number Of Remedial Squeeze Jobs Required After Primary Job Performed By Competition	0
Nbr of Remedial Plug Jobs Rqd - HES Number Of Remedial Plug Jobs Needed After Primary Plug Pumped By HES	0
Nbr of Remedial Sqz Jobs Rqd - HES Number Of Remedial Squeeze Jobs Required After Primary Job Performed By HES	0