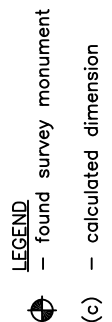
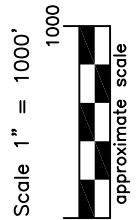
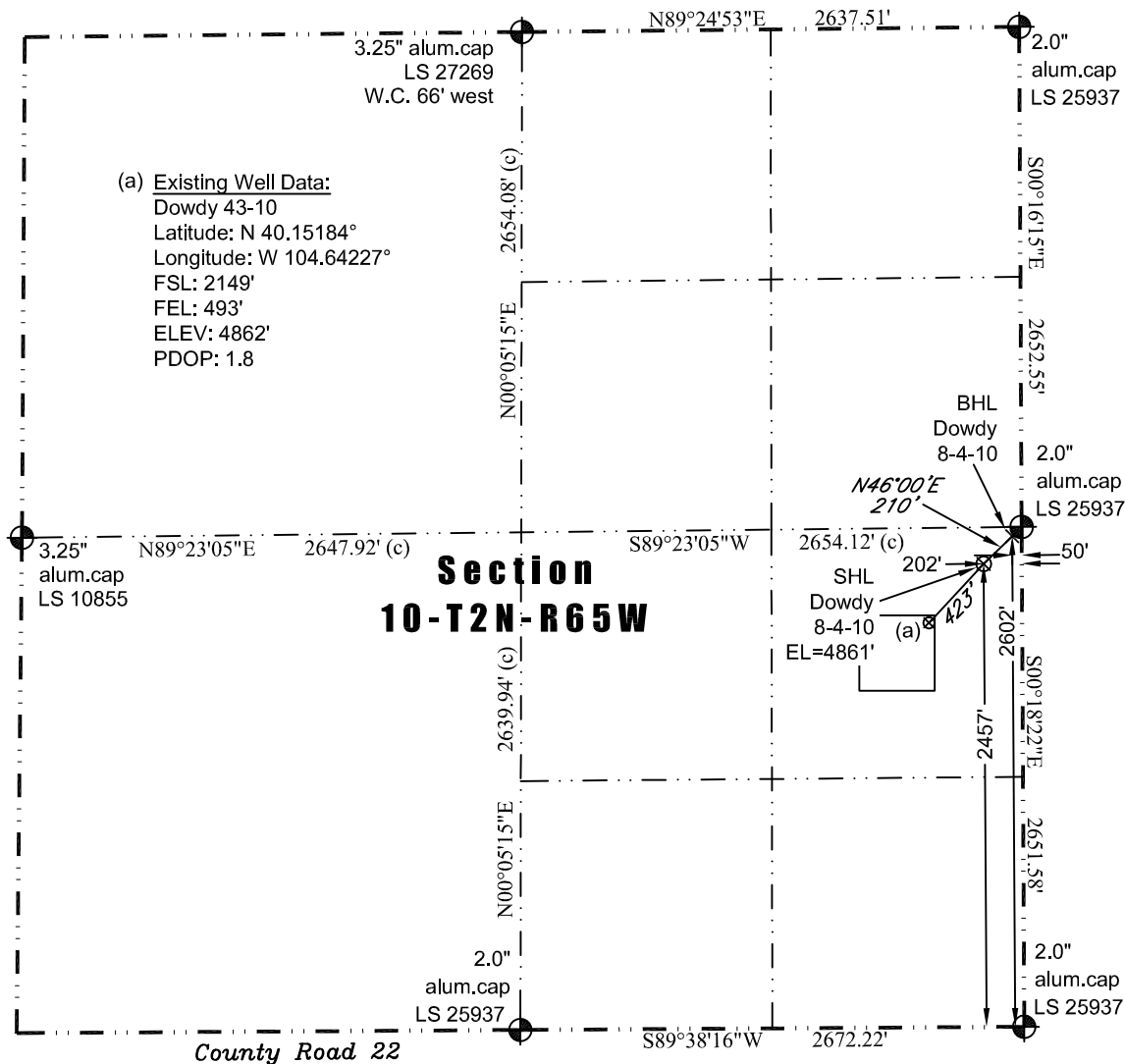


# JR Land Surveying, LLC

8114 Northstar Drive  
Windsor, Colorado 80528  
P. 970-576-4641

## WELL LOCATION CERTIFICATE

THIS MAP DOES NOT REPRESENT A BOUNDARY SURVEY



In accordance with a request from Jay Knutson of EnCana Oil & Gas (USA) Inc., JR Land Surveying, LLC has determined the location of the **Dowdy 8-4-10** well site to be SHL: 2457' FSL and 202' FEL, (BHL 2602' FSL and 50' FEL), as measured at ninety (90) degrees from the section lines of Section 10, Township 2 North, Range 65 West of the 6th Principal Meridian, Weld County Colorado.

### Proposed Surface Hole Data:

Latitude: N 40.15268° (BHL: 40.15308°)  
Longitude: W 104.64122° (BHL: 104.64067°)  
PDOP: 2.1

### Nearest:

Building 455' north	Above Ground Utility 2,092' southeast
Public Road 2,443' south	Railroad 21,834' southeast
Property Line 194' north	Well Window: SHL is 377' outside
Existing Well: Dowdy 43-10, 423' southwest	

### Notes:

- 1) Bearings and distances based on NAD 83 Colorado North State Plane Coordinates using RTK GPS observations taken 5/24/12 by operator John Rice.
- 2) Conversion factor to ground (1.000270725).
- 3) Elevations based on NAVD 88 GPS heights and Geoid 2003 corrections.
- 4) See Location Drawing for visible improvements within 400 feet of Pad Site.
- 5) The surface use is a uncultivated field.

**NOTICE:** According to Colorado law you must commence any legal action based upon any defect in this W.L.C. within three years after you first discover such defect. In no event may any action based upon any defect in this W.L.C. be commenced more than ten years from this said date of the certification shown hereon.

I hereby certify that this Well Location Certificate was prepared by me or under my direct supervision on 5/25/2012 for and on behalf of EnCana Oil & Gas (USA) Inc. That it is not a Land Survey Plat or an Improvement Survey Plat and that it is not to be relied upon for establishment of fences, buildings, or other future improvement lines. **38219**

John Robert McGehee LS#38219  
Well: Dowdy 8-4-10 WLC