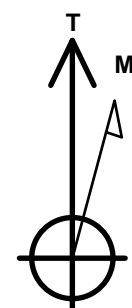
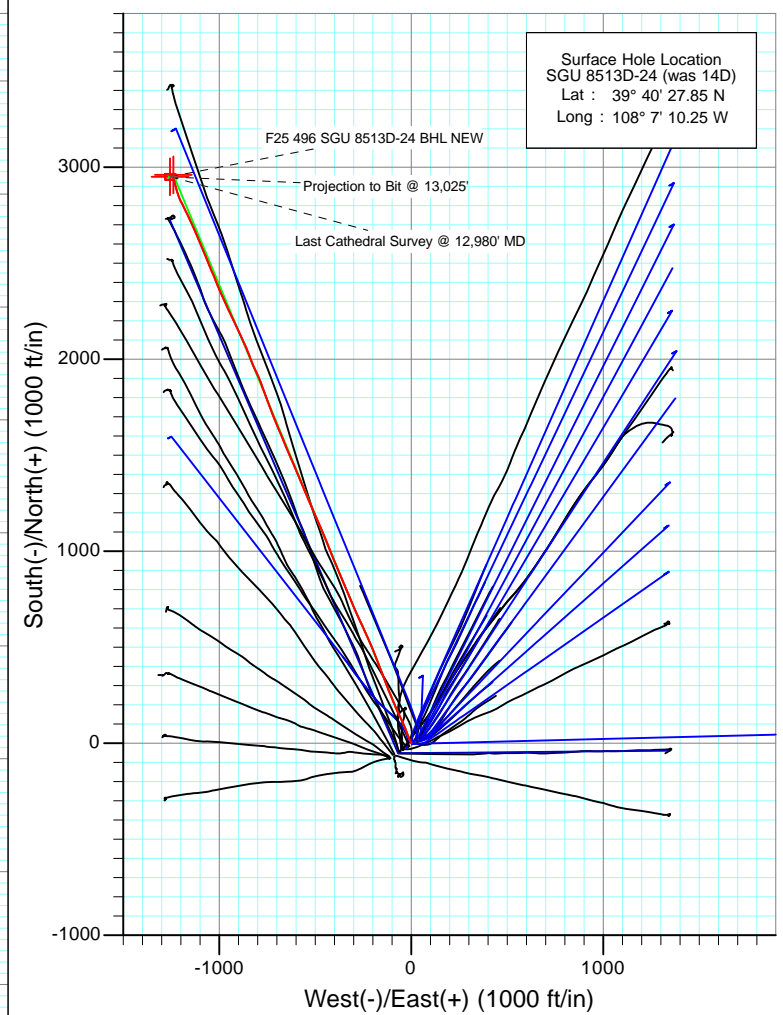
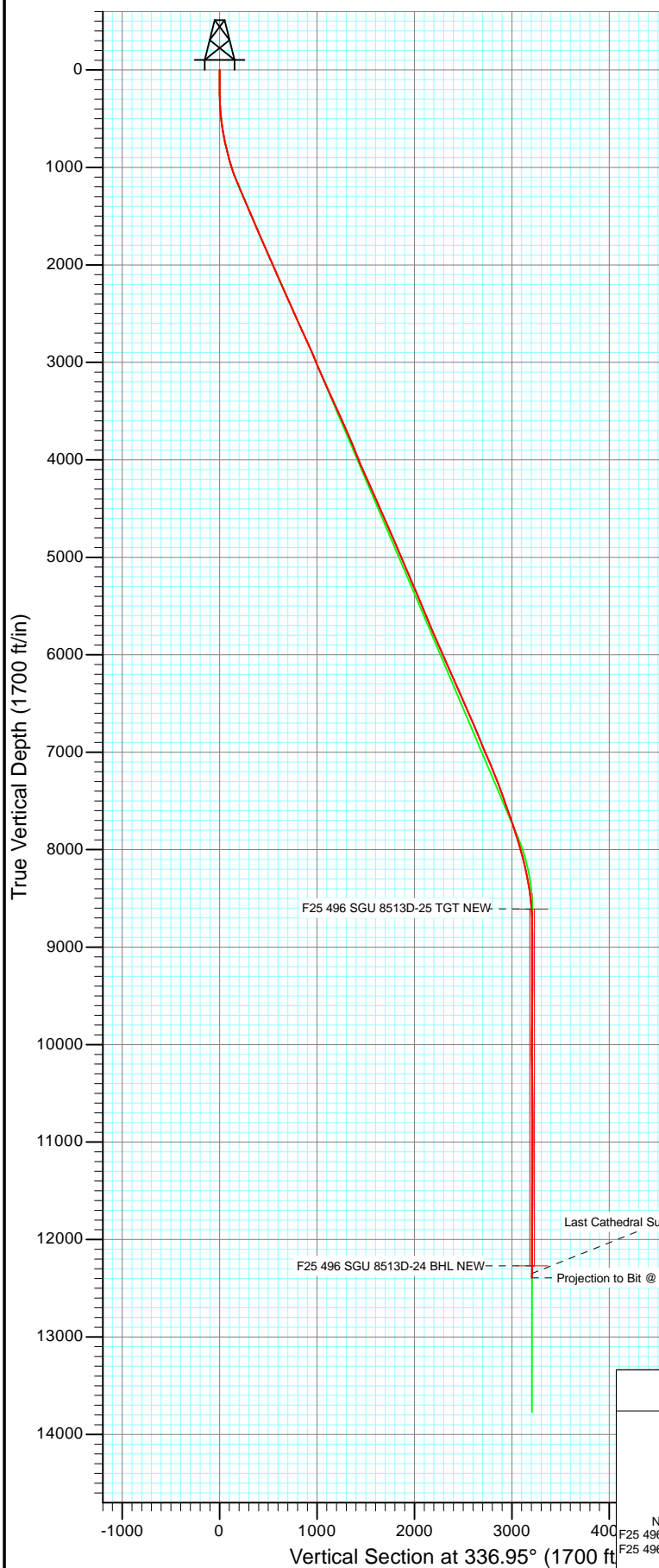




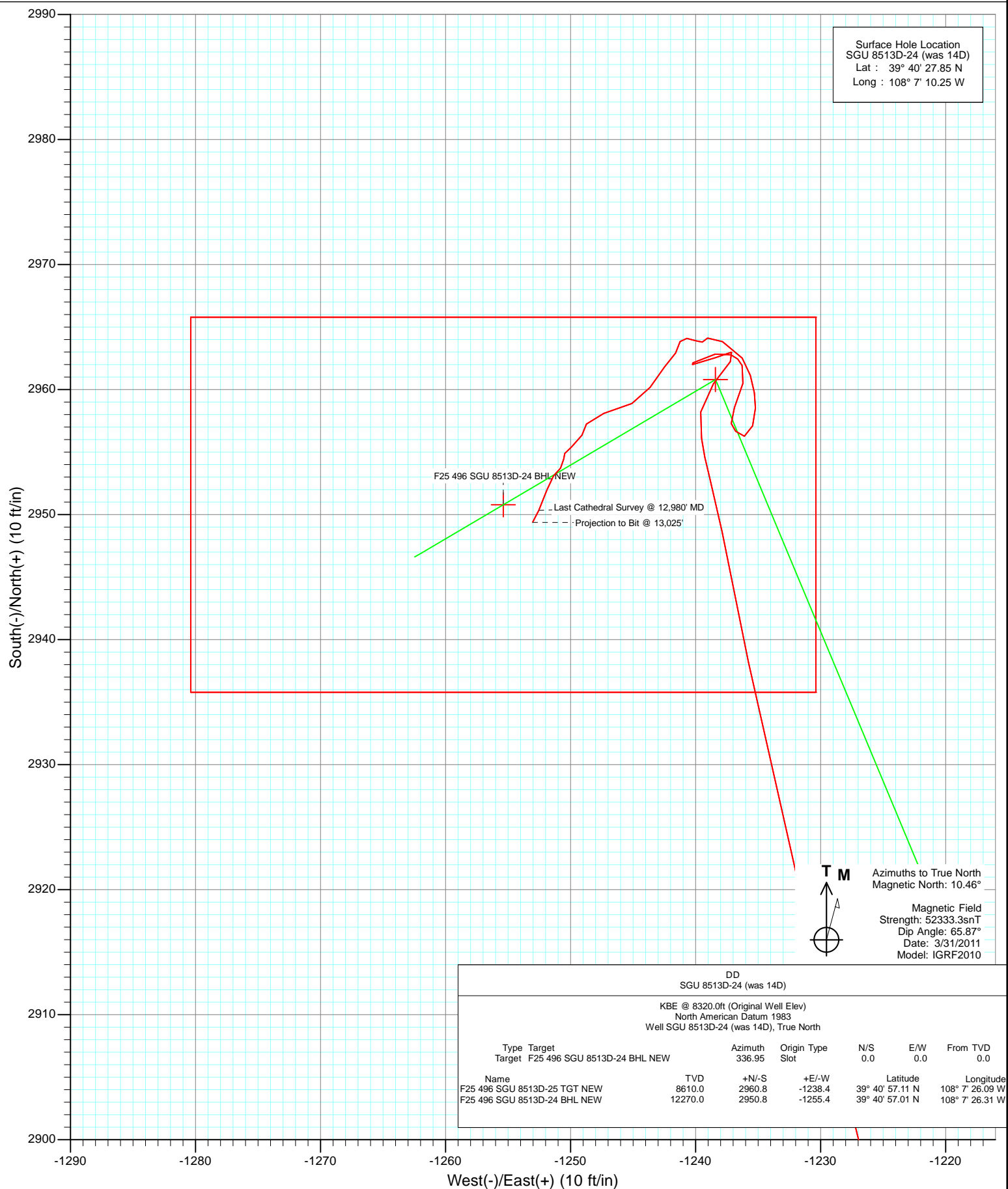
Project: Story Gulch  
 Site: F25 496  
 Well: SGU 8513D-24 (was 14D)  
 Wellbore: DD  
 Design: FINAL



Azimuths to True North  
 Magnetic North: 10.46°

Magnetic Field  
 Strength: 52333.3snT  
 Dip Angle: 65.87°  
 Date: 3/31/2011  
 Model: IGRF2010

DD SGU 8513D-24 (was 14D)						
KBE @ 8320.0ft (Original Well Elev)						
North American Datum 1983						
Well SGU 8513D-24 (was 14D), True North						
Type Target	Azimuth	Origin Type	N/S	E/W	From TVD	
Target F25 496 SGU 8513D-24 BHL NEW	336.95	Slot	0.0	0.0	0.0	
Name	TVD	+N/-S	+E/-W	Latitude	Longitude	
F25 496 SGU 8513D-25 TGT NEW	8610.0	2960.8	-1238.4	39° 40' 57.11 N	108° 7' 26.09 W	
F25 496 SGU 8513D-24 BHL NEW	12270.0	2950.8	-1255.4	39° 40' 57.01 N	108° 7' 26.31 W	



## Survey Report

<b>Company:</b>	EnCana Oil & Gas (USA) Inc	<b>Local Co-ordinate Reference:</b>	Well SGU 8513D-24 (was 14D)
<b>Project:</b>	Story Gulch	<b>TVD Reference:</b>	KBE @ 8320.0ft (Original Well Elev)
<b>Site:</b>	F25 496	<b>MD Reference:</b>	KBE @ 8320.0ft (Original Well Elev)
<b>Well:</b>	SGU 8513D-24 (was 14D)	<b>North Reference:</b>	True
<b>Wellbore:</b>	DD	<b>Survey Calculation Method:</b>	Minimum Curvature
<b>Design:</b>	DD	<b>Database:</b>	EDM 5000.1 US Multi Users DB

<b>Project</b>	Story Gulch		
<b>Map System:</b>	US State Plane 1983	<b>System Datum:</b>	Mean Sea Level
<b>Geo Datum:</b>	North American Datum 1983		
<b>Map Zone:</b>	Colorado Central Zone		

<b>Site</b>	F25 496			
<b>Site Position:</b>		<b>Northing:</b>	1,681,091.06 ft	<b>Latitude:</b> 39° 40' 27.10 N
<b>From:</b>	Lat/Long	<b>Easting:</b>	2,262,632.54 ft	<b>Longitude:</b> 108° 7' 11.76 W
<b>Position Uncertainty:</b>	0.0 ft	<b>Slot Radius:</b>	13.200 in	<b>Grid Convergence:</b> -1.65 °

<b>Well</b>	SGU 8513D-24 (was 14D)			
<b>Well Position</b>	<b>+N/-S</b>	0.0 ft	<b>Northing:</b>	1,681,163.25 ft
	<b>+E/-W</b>	0.0 ft	<b>Easting:</b>	2,262,752.45 ft
<b>Position Uncertainty</b>	0.0 ft		<b>Wellhead Elevation:</b>	ft
			<b>Ground Level:</b>	8,298.0 ft

<b>Wellbore</b>	DD				
<b>Magnetics</b>	<b>Model Name</b>	<b>Sample Date</b>	<b>Declination (°)</b>	<b>Dip Angle (°)</b>	<b>Field Strength (nT)</b>
	IGRF2010	3/31/2011	10.46	65.87	52,333

<b>Design</b>	DD			
<b>Audit Notes:</b>				
<b>Version:</b>	1.0	<b>Phase:</b>	ACTUAL	<b>Tie On Depth:</b> 0.0
<b>Vertical Section:</b>	<b>Depth From (TVD)</b>	<b>+N/-S (ft)</b>	<b>+E/-W (ft)</b>	<b>Direction (°)</b>
	0.0	0.0	0.0	336.95

<b>Survey Program</b>	<b>Date</b>	4/11/2011		
<b>From (ft)</b>	<b>To (ft)</b>	<b>Survey (Wellbore)</b>	<b>Tool Name</b>	<b>Description</b>
190.0	13,025.0	Survey #1 (DD)	MWD	Geolink MWD

<b>Survey</b>									
<b>Measured Depth (ft)</b>	<b>Inclination (°)</b>	<b>Azimuth (°)</b>	<b>Vertical Depth (ft)</b>	<b>+N/-S (ft)</b>	<b>+E/-W (ft)</b>	<b>Vertical Section (ft)</b>	<b>Dogleg Rate (°/100ft)</b>	<b>Build Rate (°/100ft)</b>	<b>Formations / Comments</b>
0.0	0.00	0.00	0.0	0.0	0.0	0.0	0.00	0.00	
190.0	0.50	82.00	190.0	0.1	0.8	-0.2	0.26	0.26	
221.0	0.30	52.40	221.0	0.2	1.0	-0.2	0.91	-0.65	
252.0	0.50	14.70	252.0	0.4	1.1	-0.1	1.03	0.65	
282.0	1.00	336.00	282.0	0.7	1.0	0.3	2.28	1.67	
313.0	1.80	333.70	313.0	1.4	0.7	1.0	2.59	2.58	
405.0	4.60	337.80	404.8	6.1	-1.3	6.2	3.05	3.04	
498.0	6.70	333.40	497.4	14.4	-5.2	15.3	2.30	2.26	
589.0	8.50	336.40	587.6	25.3	-10.2	27.3	2.02	1.98	
682.0	10.40	337.90	679.3	39.4	-16.1	42.6	2.06	2.04	
774.0	12.50	339.60	769.5	56.4	-22.7	60.8	2.31	2.28	
869.0	14.50	338.60	861.8	77.2	-30.7	83.0	2.12	2.11	
964.0	16.50	336.30	953.4	100.6	-40.4	108.4	2.20	2.11	

## Survey Report

<b>Company:</b>	EnCana Oil & Gas (USA) Inc	<b>Local Co-ordinate Reference:</b>	Well SGU 8513D-24 (was 14D)
<b>Project:</b>	Story Gulch	<b>TVD Reference:</b>	KBE @ 8320.0ft (Original Well Elev)
<b>Site:</b>	F25 496	<b>MD Reference:</b>	KBE @ 8320.0ft (Original Well Elev)
<b>Well:</b>	SGU 8513D-24 (was 14D)	<b>North Reference:</b>	True
<b>Wellbore:</b>	DD	<b>Survey Calculation Method:</b>	Minimum Curvature
<b>Design:</b>	DD	<b>Database:</b>	EDM 5000.1 US Multi Users DB

Survey									
Measured Depth (ft)	Inclination (°)	Azimuth (°)	Vertical Depth (ft)	+N/-S (ft)	+E/-W (ft)	Vertical Section (ft)	Dogleg Rate (°/100ft)	Build Rate (°/100ft)	Formations / Comments
1,060.0	19.20	334.90	1,044.8	127.4	-52.6	137.8	2.85	2.81	
1,155.0	21.40	335.40	1,133.8	157.3	-66.4	170.7	2.32	2.32	
1,250.0	23.30	335.50	1,221.7	190.1	-81.4	206.8	2.00	2.00	
1,345.0	24.40	337.80	1,308.6	225.4	-96.7	245.2	1.52	1.16	
1,440.0	23.60	338.60	1,395.4	261.3	-111.0	283.9	0.91	-0.84	
1,536.0	22.90	338.60	1,483.6	296.6	-124.8	321.8	0.73	-0.73	
1,630.0	22.20	338.80	1,570.4	330.1	-137.9	357.8	0.75	-0.74	
1,725.0	23.50	338.10	1,657.9	364.5	-151.5	394.7	1.40	1.37	
1,820.0	24.30	339.60	1,744.8	400.3	-165.4	433.1	1.06	0.84	
1,915.0	23.50	339.80	1,831.6	436.4	-178.7	471.6	0.85	-0.84	
2,010.0	23.40	338.20	1,918.8	471.7	-192.3	509.4	0.68	-0.11	
2,105.0	23.60	336.50	2,005.9	506.7	-206.9	547.2	0.74	0.21	
2,201.0	24.10	336.10	2,093.7	542.2	-222.5	586.0	0.55	0.52	
2,296.0	24.30	335.90	2,180.4	577.8	-238.3	625.0	0.23	0.21	
2,391.0	23.70	334.50	2,267.2	612.9	-254.5	663.6	0.87	-0.63	
2,486.0	23.60	335.10	2,354.2	647.4	-270.7	701.7	0.27	-0.11	
2,581.0	23.90	335.20	2,441.1	682.1	-286.8	739.9	0.32	0.32	
2,676.0	24.60	337.20	2,527.8	717.8	-302.5	778.9	1.14	0.74	
2,771.0	24.40	336.60	2,614.2	754.0	-318.0	818.3	0.34	-0.21	
2,867.0	24.70	337.80	2,701.5	790.8	-333.4	858.2	0.61	0.31	
2,962.0	24.90	337.70	2,787.8	827.7	-348.5	898.1	0.22	0.21	
3,099.0	23.40	336.20	2,912.8	879.2	-370.5	954.1	1.18	-1.09	
3,191.0	22.30	336.10	2,997.6	911.9	-384.9	989.8	1.20	-1.20	
3,282.0	23.40	339.50	3,081.4	944.6	-398.2	1,025.1	1.89	1.21	
3,374.0	22.60	337.20	3,166.1	978.0	-411.5	1,061.1	1.31	-0.87	
3,465.0	24.10	337.90	3,249.6	1,011.4	-425.2	1,097.1	1.68	1.65	
3,557.0	25.80	338.60	3,333.1	1,047.4	-439.6	1,135.9	1.88	1.85	
3,648.0	25.00	337.40	3,415.3	1,083.6	-454.2	1,175.0	1.05	-0.88	
3,740.0	23.70	336.60	3,499.1	1,118.5	-469.0	1,212.9	1.46	-1.41	
3,831.0	24.90	336.90	3,582.0	1,152.9	-483.8	1,250.3	1.33	1.32	
3,923.0	23.40	335.20	3,666.0	1,187.3	-499.1	1,288.0	1.80	-1.63	
4,015.0	22.90	336.10	3,750.5	1,220.3	-514.0	1,324.1	0.67	-0.54	
4,107.0	21.70	337.30	3,835.7	1,252.4	-527.8	1,359.0	1.40	-1.30	
4,198.0	22.80	337.80	3,919.9	1,284.2	-541.0	1,393.5	1.23	1.21	
4,290.0	21.70	335.40	4,005.0	1,316.2	-554.8	1,428.3	1.55	-1.20	
4,382.0	24.00	336.80	4,089.8	1,348.8	-569.2	1,464.0	2.57	2.50	
4,474.0	25.10	338.40	4,173.5	1,384.2	-583.8	1,502.2	1.40	1.20	
4,565.0	24.40	337.10	4,256.1	1,419.4	-598.2	1,540.3	0.97	-0.77	
4,657.0	23.30	336.70	4,340.3	1,453.7	-612.8	1,577.5	1.21	-1.20	
4,749.0	24.20	337.10	4,424.5	1,487.7	-627.3	1,614.6	0.99	0.98	
4,840.0	22.60	336.70	4,508.0	1,521.0	-641.5	1,650.7	1.77	-1.76	
4,932.0	23.20	337.20	4,592.8	1,553.9	-655.5	1,686.5	0.69	0.65	
5,023.0	24.50	337.20	4,676.0	1,587.8	-669.8	1,723.3	1.43	1.43	
5,115.0	23.30	336.90	4,760.1	1,622.2	-684.3	1,760.6	1.31	-1.30	
5,207.0	24.50	338.10	4,844.2	1,656.6	-698.6	1,797.9	1.41	1.30	
5,299.0	23.00	337.80	4,928.4	1,690.9	-712.5	1,834.9	1.64	-1.63	
5,391.0	23.70	339.00	5,012.9	1,724.8	-725.9	1,871.4	0.92	0.76	
5,482.0	21.90	339.30	5,096.8	1,757.8	-738.5	1,906.6	1.98	-1.98	
5,574.0	23.30	339.90	5,181.7	1,790.9	-750.8	1,941.9	1.54	1.52	
5,666.0	23.30	339.70	5,266.2	1,825.1	-763.3	1,978.3	0.09	0.00	
5,757.0	23.30	339.70	5,349.8	1,858.8	-775.8	2,014.2	0.00	0.00	
5,849.0	22.90	338.10	5,434.4	1,892.5	-788.8	2,050.3	0.81	-0.43	
5,941.0	22.80	336.10	5,519.2	1,925.4	-802.7	2,086.0	0.85	-0.11	

## Survey Report

<b>Company:</b>	EnCana Oil & Gas (USA) Inc	<b>Local Co-ordinate Reference:</b>	Well SGU 8513D-24 (was 14D)
<b>Project:</b>	Story Gulch	<b>TVD Reference:</b>	KBE @ 8320.0ft (Original Well Elev)
<b>Site:</b>	F25 496	<b>MD Reference:</b>	KBE @ 8320.0ft (Original Well Elev)
<b>Well:</b>	SGU 8513D-24 (was 14D)	<b>North Reference:</b>	True
<b>Wellbore:</b>	DD	<b>Survey Calculation Method:</b>	Minimum Curvature
<b>Design:</b>	DD	<b>Database:</b>	EDM 5000.1 US Multi Users DB

Survey									
Measured Depth (ft)	Inclination (°)	Azimuth (°)	Vertical Depth (ft)	+N/-S (ft)	+E/-W (ft)	Vertical Section (ft)	Dogleg Rate (°/100ft)	Build Rate (°/100ft)	Formations / Comments
6,033.0	22.40	335.60	5,604.1	1,957.7	-817.2	2,121.3	0.48	-0.43	
6,124.0	22.70	337.10	5,688.2	1,989.7	-831.2	2,156.2	0.71	0.33	
6,215.0	22.50	340.50	5,772.2	2,022.2	-843.8	2,191.2	1.45	-0.22	
6,307.0	23.50	336.80	5,856.9	2,055.7	-856.9	2,227.1	1.91	1.09	
6,398.0	24.70	336.40	5,939.9	2,089.8	-871.7	2,264.2	1.33	1.32	
6,490.0	24.30	334.10	6,023.6	2,124.4	-887.6	2,302.4	1.12	-0.43	
6,581.0	23.90	334.00	6,106.7	2,157.9	-903.9	2,339.5	0.44	-0.44	
6,673.0	22.90	333.70	6,191.1	2,190.7	-920.0	2,376.0	1.09	-1.09	
6,764.0	23.50	334.50	6,274.8	2,222.9	-935.7	2,411.8	0.74	0.66	
6,856.0	24.50	336.30	6,358.8	2,256.9	-951.2	2,449.2	1.35	1.09	
6,947.0	24.90	336.70	6,441.5	2,291.8	-966.4	2,487.2	0.48	0.44	
7,038.0	22.70	334.40	6,524.8	2,325.2	-981.6	2,523.9	2.62	-2.42	
7,130.0	23.60	336.70	6,609.4	2,358.2	-996.5	2,560.1	1.39	0.98	
7,221.0	23.40	338.50	6,692.8	2,391.7	-1,010.3	2,596.3	0.82	-0.22	
7,313.0	23.50	337.20	6,777.2	2,425.6	-1,024.1	2,632.9	0.57	0.11	
7,405.0	21.40	335.70	6,862.2	2,457.8	-1,038.2	2,668.1	2.37	-2.28	
7,496.0	22.10	337.50	6,946.8	2,488.8	-1,051.5	2,701.8	1.06	0.77	
7,588.0	24.70	339.40	7,031.2	2,522.8	-1,064.9	2,738.3	2.94	2.83	
7,680.0	23.30	337.50	7,115.2	2,557.6	-1,078.7	2,775.7	1.74	-1.52	
7,771.0	22.10	337.10	7,199.2	2,590.0	-1,092.2	2,810.8	1.33	-1.32	
7,863.0	20.90	336.40	7,284.8	2,620.9	-1,105.5	2,844.5	1.33	-1.30	
7,955.0	20.40	336.70	7,370.9	2,650.7	-1,118.4	2,877.0	0.56	-0.54	
8,045.0	19.90	335.80	7,455.4	2,679.1	-1,130.9	2,908.0	0.65	-0.56	
8,137.0	19.80	335.40	7,541.9	2,707.5	-1,143.8	2,939.2	0.18	-0.11	
8,229.0	19.10	335.40	7,628.6	2,735.4	-1,156.6	2,969.8	0.76	-0.76	
8,320.0	18.50	334.60	7,714.8	2,762.0	-1,169.0	2,999.1	0.72	-0.66	
8,412.0	17.80	333.70	7,802.2	2,787.8	-1,181.4	3,027.8	0.82	-0.76	
8,503.0	17.70	332.80	7,888.9	2,812.5	-1,193.9	3,055.4	0.32	-0.11	
8,595.0	16.50	336.70	7,976.8	2,837.0	-1,205.5	3,082.5	1.80	-1.30	
8,687.0	15.10	339.50	8,065.3	2,860.2	-1,214.9	3,107.5	1.73	-1.52	
8,779.0	12.80	343.90	8,154.6	2,881.2	-1,221.9	3,129.6	2.75	-2.50	
8,870.0	12.00	345.90	8,243.5	2,900.1	-1,227.0	3,148.9	1.00	-0.88	
8,962.0	10.30	347.70	8,333.8	2,917.4	-1,231.1	3,166.5	1.89	-1.85	
9,054.0	8.50	346.70	8,424.5	2,932.0	-1,234.4	3,181.3	1.96	-1.96	
9,145.0	6.60	349.40	8,514.7	2,943.7	-1,236.9	3,193.0	2.12	-2.09	
9,237.0	5.00	345.90	8,606.2	2,952.8	-1,238.8	3,202.1	1.78	-1.74	
9,329.0	1.90	8.50	8,698.1	2,958.2	-1,239.6	3,207.4	3.62	-3.37	
9,420.0	1.40	46.30	8,789.0	2,960.5	-1,238.6	3,209.1	1.28	-0.55	
9,512.0	1.40	28.20	8,881.0	2,962.2	-1,237.2	3,210.2	0.48	0.00	
9,603.0	0.60	243.10	8,972.0	2,963.0	-1,237.1	3,210.8	2.11	-0.88	
9,695.0	1.10	255.30	9,064.0	2,962.6	-1,238.4	3,210.9	0.57	0.54	
9,787.0	1.30	251.50	9,156.0	2,962.0	-1,240.2	3,211.1	0.23	0.22	
9,878.0	1.40	65.60	9,247.0	2,962.1	-1,240.2	3,211.2	2.96	0.11	
9,970.0	1.00	72.80	9,338.9	2,962.8	-1,238.4	3,211.2	0.46	-0.43	
10,062.0	0.70	121.10	9,430.9	2,962.8	-1,237.2	3,210.6	0.81	-0.33	
10,154.0	0.10	123.10	9,522.9	2,962.4	-1,236.6	3,210.1	0.65	-0.65	
10,245.0	0.70	149.50	9,613.9	2,961.9	-1,236.3	3,209.5	0.67	0.66	
10,337.0	1.20	193.00	9,705.9	2,960.5	-1,236.2	3,208.2	0.92	0.54	
10,429.0	1.40	204.50	9,797.9	2,958.5	-1,236.9	3,206.6	0.36	0.22	
10,520.0	0.40	140.30	9,888.9	2,957.3	-1,237.1	3,205.6	1.40	-1.10	
10,612.0	0.50	158.30	9,980.9	2,956.7	-1,236.8	3,204.9	0.19	0.11	
10,703.0	0.70	93.50	10,071.9	2,956.3	-1,236.1	3,204.2	0.73	0.22	
10,795.0	1.10	6.30	10,163.9	2,957.1	-1,235.4	3,204.7	1.39	0.43	

## Survey Report

<b>Company:</b>	EnCana Oil & Gas (USA) Inc	<b>Local Co-ordinate Reference:</b>	Well SGU 8513D-24 (was 14D)
<b>Project:</b>	Story Gulch	<b>TVD Reference:</b>	KBE @ 8320.0ft (Original Well Elev)
<b>Site:</b>	F25 496	<b>MD Reference:</b>	KBE @ 8320.0ft (Original Well Elev)
<b>Well:</b>	SGU 8513D-24 (was 14D)	<b>North Reference:</b>	True
<b>Wellbore:</b>	DD	<b>Survey Calculation Method:</b>	Minimum Curvature
<b>Design:</b>	DD	<b>Database:</b>	EDM 5000.1 US Multi Users DB

Survey									
Measured Depth (ft)	Inclination (°)	Azimuth (°)	Vertical Depth (ft)	+N/-S (ft)	+E/-W (ft)	Vertical Section (ft)	Dogleg Rate (°/100ft)	Build Rate (°/100ft)	Formations / Comments
10,886.0	0.70	13.90	10,254.9	2,958.5	-1,235.2	3,205.9	0.46	-0.44	
10,977.0	0.90	341.60	10,345.8	2,959.7	-1,235.3	3,207.1	0.53	0.22	
11,069.0	0.90	352.90	10,437.8	2,961.1	-1,235.6	3,208.5	0.19	0.00	
11,160.0	1.10	320.20	10,528.8	2,962.5	-1,236.3	3,210.0	0.65	0.22	
11,252.0	1.50	302.30	10,620.8	2,963.8	-1,237.8	3,211.9	0.61	0.43	
11,343.0	0.50	207.20	10,711.8	2,964.1	-1,239.0	3,212.6	1.78	-1.10	
11,434.0	0.30	280.50	10,802.8	2,963.8	-1,239.5	3,212.5	0.55	-0.22	
11,526.0	0.30	280.50	10,894.8	2,963.9	-1,239.9	3,212.7	0.00	0.00	
11,617.0	0.70	285.70	10,985.8	2,964.1	-1,240.7	3,213.2	0.44	0.44	
11,709.0	0.50	179.70	11,077.8	2,963.8	-1,241.2	3,213.2	1.05	-0.22	
11,800.0	0.80	215.20	11,168.8	2,962.9	-1,241.6	3,212.5	0.54	0.33	
11,892.0	1.00	221.30	11,260.8	2,961.8	-1,242.5	3,211.8	0.24	0.22	
11,983.0	1.50	210.90	11,351.7	2,960.2	-1,243.6	3,210.8	0.60	0.55	
12,075.0	1.10	252.80	11,443.7	2,958.9	-1,245.1	3,210.2	1.09	-0.43	
12,166.0	1.90	249.50	11,534.7	2,958.1	-1,247.3	3,210.3	0.88	0.88	
12,258.0	0.40	171.30	11,626.7	2,957.2	-1,248.7	3,210.1	2.02	-1.63	
12,349.0	0.90	215.50	11,717.7	2,956.4	-1,249.1	3,209.4	0.74	0.55	
12,441.0	0.70	229.00	11,809.7	2,955.4	-1,249.9	3,208.8	0.30	-0.22	
12,533.0	0.20	216.90	11,901.6	2,954.9	-1,250.5	3,208.6	0.55	-0.54	
12,625.0	0.40	179.40	11,993.6	2,954.4	-1,250.5	3,208.2	0.29	0.22	
12,716.0	0.60	211.80	12,084.6	2,953.7	-1,250.8	3,207.6	0.37	0.22	
12,808.0	0.50	232.40	12,176.6	2,953.1	-1,251.4	3,207.3	0.24	-0.11	
12,899.0	1.10	193.80	12,267.6	2,952.0	-1,251.9	3,206.5	0.85	0.66	
12,980.0	1.40	207.50	12,348.6	2,950.3	-1,252.5	3,205.2	0.52	0.37	Last Cathedral Survey @ 12,980' MD Projection to Bit @ 13,025'
13,025.0	1.40	207.50	12,393.6	2,949.4	-1,253.0	3,204.5	0.00	0.00	

Targets									
Target Name	Dip Angle (°)	Dip Dir. (°)	TVD (ft)	+N/-S (ft)	+E/-W (ft)	Northing (ft)	Easting (ft)	Latitude	Longitude
- hit/miss target									
- Shape									
F25 496 SGU 8513D-25	0.00	0.00	8,610.0	2,960.8	-1,238.4	1,684,158.52	2,261,599.92	39° 40' 57.11 N	108° 7' 26.09 W
- survey misses target center by 7.7ft at 9241.2ft MD (8610.4 TVD, 2953.2 N, -1238.9 E)									
- Point									
F25 496 SGU 8513D-24	0.00	0.00	12,270.0	2,950.8	-1,255.4	1,684,149.00	2,261,582.67	39° 40' 57.01 N	108° 7' 26.31 W
- survey misses target center by 3.7ft at 12901.4ft MD (12270.1 TVD, 2951.9 N, -1251.9 E)									
- Rectangle (sides W30.0 H50.0 D0.0)									

Survey Annotations					
Measured Depth (ft)	Vertical Depth (ft)	Local Coordinates			
		+N/-S (ft)	+E/-W (ft)	Comment	
12,980.0	12,348.6	2,950.3	-1,252.5	Last Cathedral Survey @ 12,980' MD Projection to Bit @ 13,025'	
13,025.0	12,393.6	2,949.4	-1,253.0		

Checked By: _____	Approved By: _____	Date: _____
-------------------	--------------------	-------------