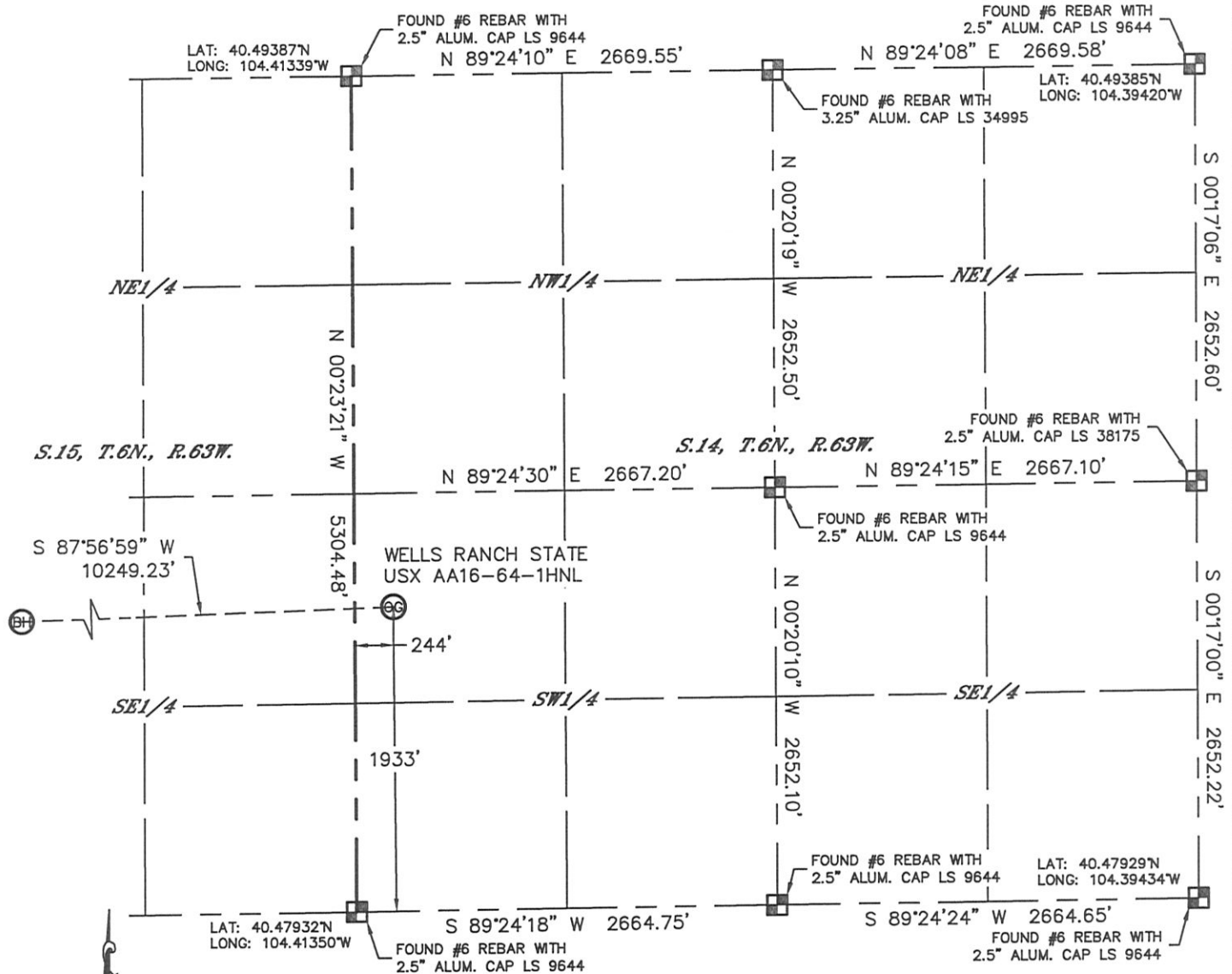


Lat40°, Inc. 1635 Foxtrail Drive, Suite 325 Loveland, CO 970-776-3321

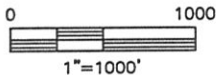
WELL LOCATION CERTIFICATE

THIS MAP DOES NOT REPRESENT A BOUNDARY SURVEY

SECTION: 14
TOWNSHIP: 6N
RANGE: 63W



In accordance with a request from Matt Verbit with Noble Energy Inc. Lat40°, Inc. has determined the surface location of the WELLS RANCH STATE USX AA16-64-1HNL to be 1933' from the SOUTH line and 244' from the WEST line as measured at right angles from the section lines of Section 14, Township 6 North, Range 63 West and the bottom hole to be 1650' from the SOUTH line and 535' from the WEST line as measured at right angles from the section lines of Section 16, Township 6 North, Range 63 West of the Sixth Principal Meridian, County of Weld, State of Colorado. I hereby state that this Well Location Certificate was prepared by me, or under my direct supervision, that the fieldwork was completed on 5/31/2012, for and on behalf of Noble Energy Inc. That this is not a Land Survey Plat or an Improvement Survey Plat, and that it is not to be relied upon for establishment of fence, building, or other future Improvement lines.



NOTE:

- 1) Bearings shown are Grid Bearings of the Colorado State Plane Coordinate System, North Zone, North American Datum 1983/2007. The lineal dimensions as contained herein are based upon the "U.S. Survey Foot."
- 2) Ground elevations are based on an observed GPS elevation (NAVD 1988 DATUM).
- 3) NEAREST EXISTING WELL: NONE WITHIN SECTION
- 4) IMPROVEMENTS: See LOCATION DRAWING for all visible improvements within 400' of disturbed area.
- 5) SURFACE USE: RANGELAND
- 6) INSTRUMENT OPERATOR: ADAM KELLY

NOTE

According to Colorado law, you must commence any legal action based upon any defect in this W.L.C. within three years after you discover such defect. In no event, may any action based upon any defect in this survey be commenced more than ten years after the date of the certificate shown hereon. (13-80-105 C.R.S.)

LEGEND

- = ALIQUOT MONUMENT AS DESCRIBED
- = CALCULATED POSITION

SURFACE LOCATION

LAT: 40.48462°N
LONG: 104.41258°W
PDOP: 1.3
ELEV: 4756'
1/4,1/4: NW1/4SW1/4
NEAREST PROPERTY LINE: 244' WEST

BOTTOM HOLE

LAT: 40.48395°N
LONG: 104.44940°W



SHEET 1 OF 3

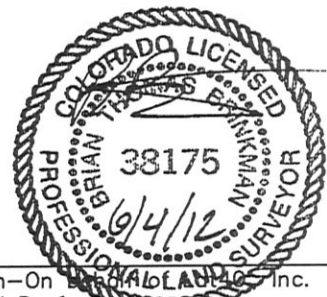
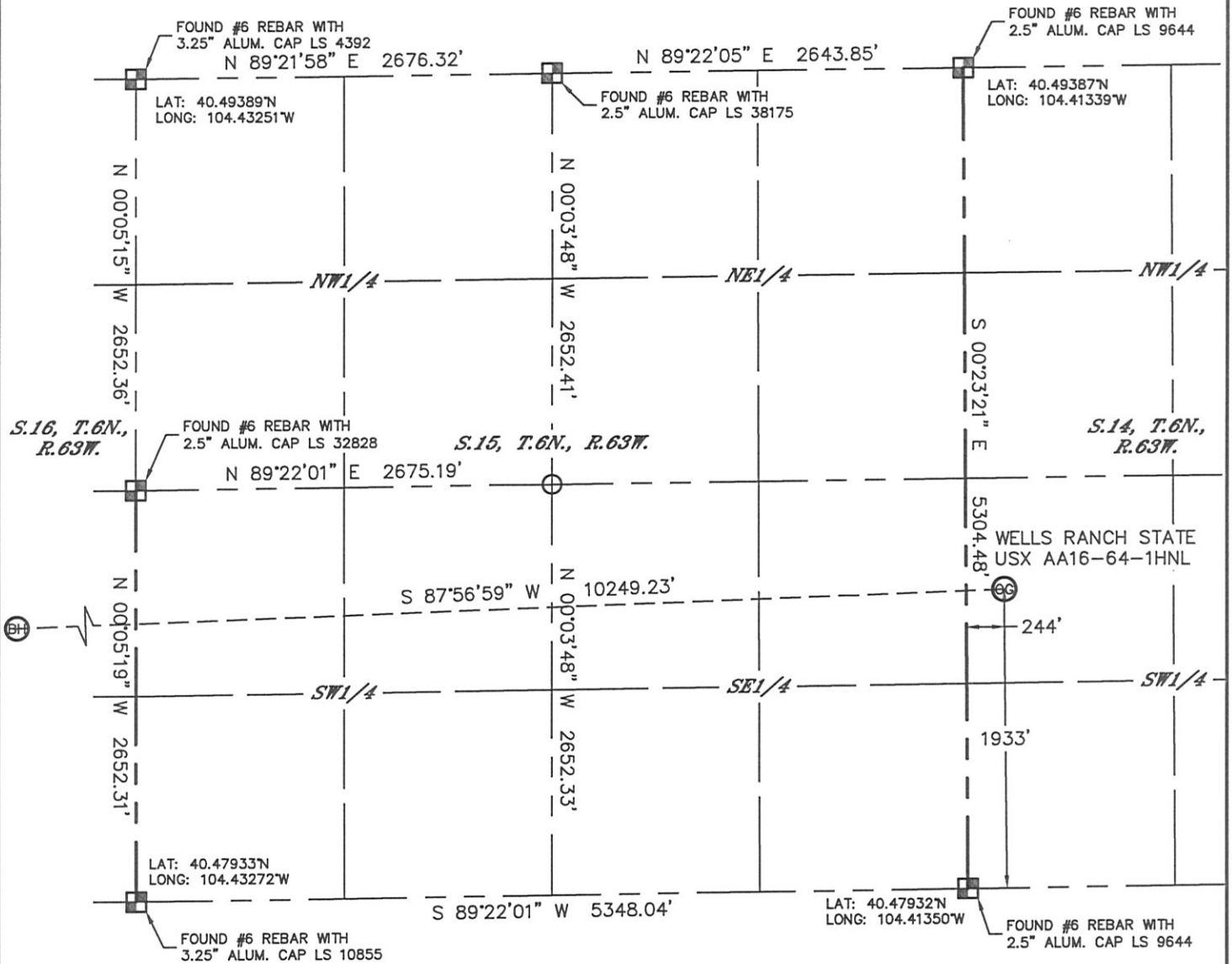
Brian T. Brinkman-On Behalf of Lat40°, Inc.
Colorado Licensed Professional Surveyor No. 38175
DATE: 6/4/2012
PROJECT#: 2012075

Lat40°, Inc. 1635 Foxtrail Drive, Suite 325 Loveland, CO 970-776-3321

WELL LOCATION CERTIFICATE

THIS MAP DOES NOT REPRESENT A BOUNDARY SURVEY

SECTION: 14
TOWNSHIP: 6N
RANGE: 63W



NOTE
According to Colorado law, you must commence any legal action based upon any defect in this W.L.C. within three years after you discover such defect. In no event, may any action based upon any defect in this survey be commenced more than ten years after the date of the certificate shown hereon. (13-80-105 C.R.S.)

- LEGEND**
- = ALIQUOT MONUMENT AS DESCRIBED
 - = CALCULATED POSITION

SHEET 2 OF 3

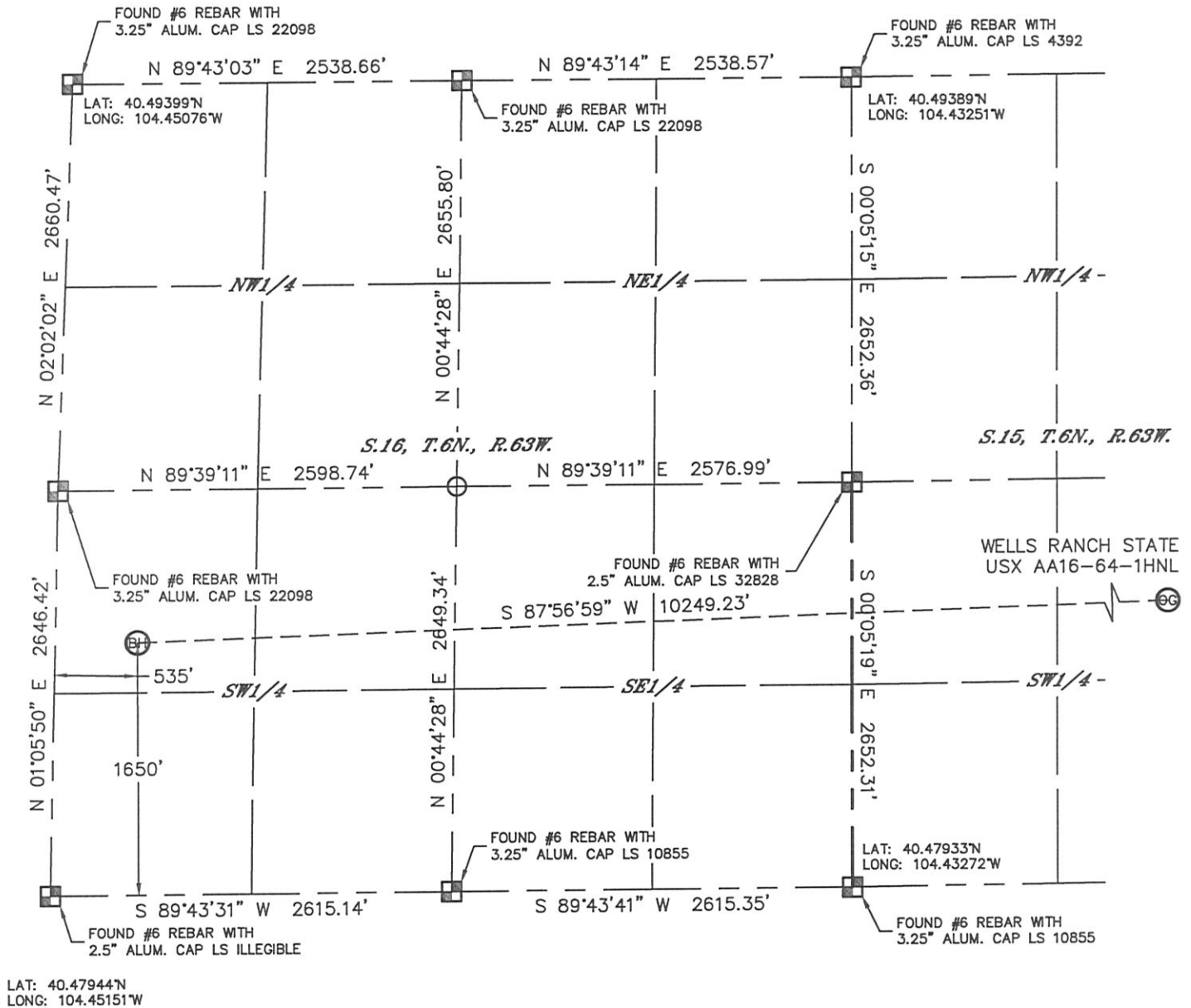
Brian T. Brinkman-On Demand Land Co., Inc.
Colorado Licensed Professional Surveyor No. 38175
DATE: 6/4/2012
PROJECT#: 2012075

Lat40°, Inc. 1635 Foxtrail Drive, Suite 325 Loveland, CO 970-776-3321

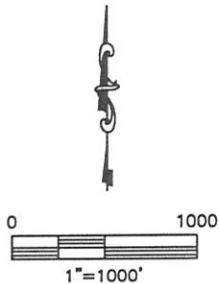
WELL LOCATION CERTIFICATE

THIS MAP DOES NOT REPRESENT A BOUNDARY SURVEY

SECTION: 14
TOWNSHIP: 6N
RANGE: 63W





LAT: 40.47944°N
LONG: 104.45151°W



NOTE

According to Colorado law, you must commence any legal action based upon any defect in this W.L.C. within three years after you discover such defect. In no event, may any action based upon any defect in this survey be commenced more than ten years after the date of the certificate shown hereon. (13-80-105 C.R.S.)

LEGEND

-  = ALIQUOT MONUMENT AS DESCRIBED
-  = CALCULATED POSITION

SHEET 3 OF 3

Brian T. Brinkman-On Demand Land & Survey Inc.
Colorado Licensed Professional Land Surveyor No. 38175
DATE: 6/4/2012
PROJECT#: 2012075



SECTION: 14
TOWNSHIP: 6N
RANGE: 63W

SITE SKETCH

WELLS RANCH STATE USX AA16-64-1HNL

(2 OF 2)

SECTION: 14
TOWNSHIP: 6N
RANGE: 63W

9

WELLS RANCH 14-15
SW1/4SW1/4
661' FSL
673' FWL
LAT-40.48115N
LONG-104.43027W
PDOP: 2.6
ELEV: 4696'

10

WELLS RANCH 24-15
SE1/4SW1/4
848' FSL
1821' FWL
LAT-40.48165N
LONG-104.42614W
PDOP: 2.3
ELEV: 4712'

11

WELLS RANCH 34-15
SW1/4SE1/4
856' FSL
1824' FWL
LAT-40.48167N
LONG-104.42003W
PDOP: 1.8
ELEV: 4718'

12

WELLS RANCH 44-15
SE1/4SE1/4
844' FSL
855' FWL
LAT-40.48164N
LONG-104.41655W
PDOP: 1.8
ELEV: 4734'

13

WELLS RANCH 43-15
NE1/4SE1/4
1804' FSL
868' FWL
LAT-40.48427N
LONG-104.41658W
PDOP: 1.5
ELEV: 4761'

14

WELLS RANCH 33-15
NW1/4SE1/4
1801' FSL
1814' FWL
LAT-40.48427N
LONG-104.41998W
PDOP: 1.5
ELEV: 4743'

15

WELLS RANCH 23-15
NE1/4SW1/4
1994' FSL
2010' FWL
LAT-40.48480N
LONG-104.42542W
PDOP: 1.8
ELEV: 4732'

16

WELLS RANCH 13-15
NW1/4SW1/4
1989' FSL
669' FWL
LAT-40.48479N
LONG-104.43023W
PDOP: 1.5
ELEV: 4696'

27

BASHOR STATE AA16-16
SE1/4SE1/4
529' FSL
511' FWL
LAT-40.48080N
LONG-104.43453W
PDOP: 1.9
ELEV: 4694'

28

BASHOR STATE AA16-15
SW1/4SE1/4
660' FSL
1984' FWL
LAT-40.48118N
LONG-104.43982W
PDOP: 1.8
ELEV: 4680'

29

BASHOR STATE AA16-14
SW1/4SW1/4
482' FSL
2126' FWL
LAT-40.48072N
LONG-104.44381W
PDOP: 1.8
ELEV: 4678'

30

BASHOR STATE AA16-13
SW1/4SW1/4
479' FSL
816' FWL
LAT-40.48074N
LONG-104.44852W
PDOP: 1.7
ELEV: 4680'

31

BASHOR STATE AA16-25
NE1/4SW1/4
1378' FSL
1319' FWL
LAT-40.48319N
LONG-104.44662W
PDOP: 2.4
ELEV: 4680'

32

BASHOR STATE AA16-11
NE1/4SW1/4
1981' FSL
1924' FWL
LAT-40.48483N
LONG-104.44437W
PDOP: 1.7
ELEV: 4681'

33

BASHOR STATE AA16-21
NE1/4SW1/4
2597' FSL
2403' FWL
LAT-40.48651N
LONG-104.44259W
PDOP: 1.4
ELEV: 4683'

34

BASHOR STATE AA16-10
NW1/4SE1/4
1971' FSL
1935' FWL
LAT-40.48478N
LONG-104.43960W
PDOP: 2.0
ELEV: 4683'

35

BASHOR STATE AA16-24
SW1/4SE1/4
1304' FSL
2518' FWL
LAT-40.48296N
LONG-104.44171W
PDOP: 2.0
ELEV: 4679'

36

BASHOR STATE AA16-23
NW1/4SE1/4
1394' FSL
1397' FWL
LAT-40.48319N
LONG-104.43768W
PDOP: 2.0
ELEV: 4684'

45

BASHOR STATE AA16-22
NW1/4SE1/4
2565' FSL
1339' FWL
LAT-40.48640N
LONG-104.43743W
PDOP: 1.6
ELEV: 4684'

46

BASHOR STATE AA16-09
NE1/4SE1/4
2042' FSL
617' FWL
LAT-40.48495N
LONG-104.43485W
PDOP: 1.5
ELEV: 4686'

47

BASHOR STATE AA16-12
NW1/4SW1/4
1974' FSL
543' FWL
LAT-40.48484N
LONG-104.44934W
PDOP: 1.4
ELEV: 4678'