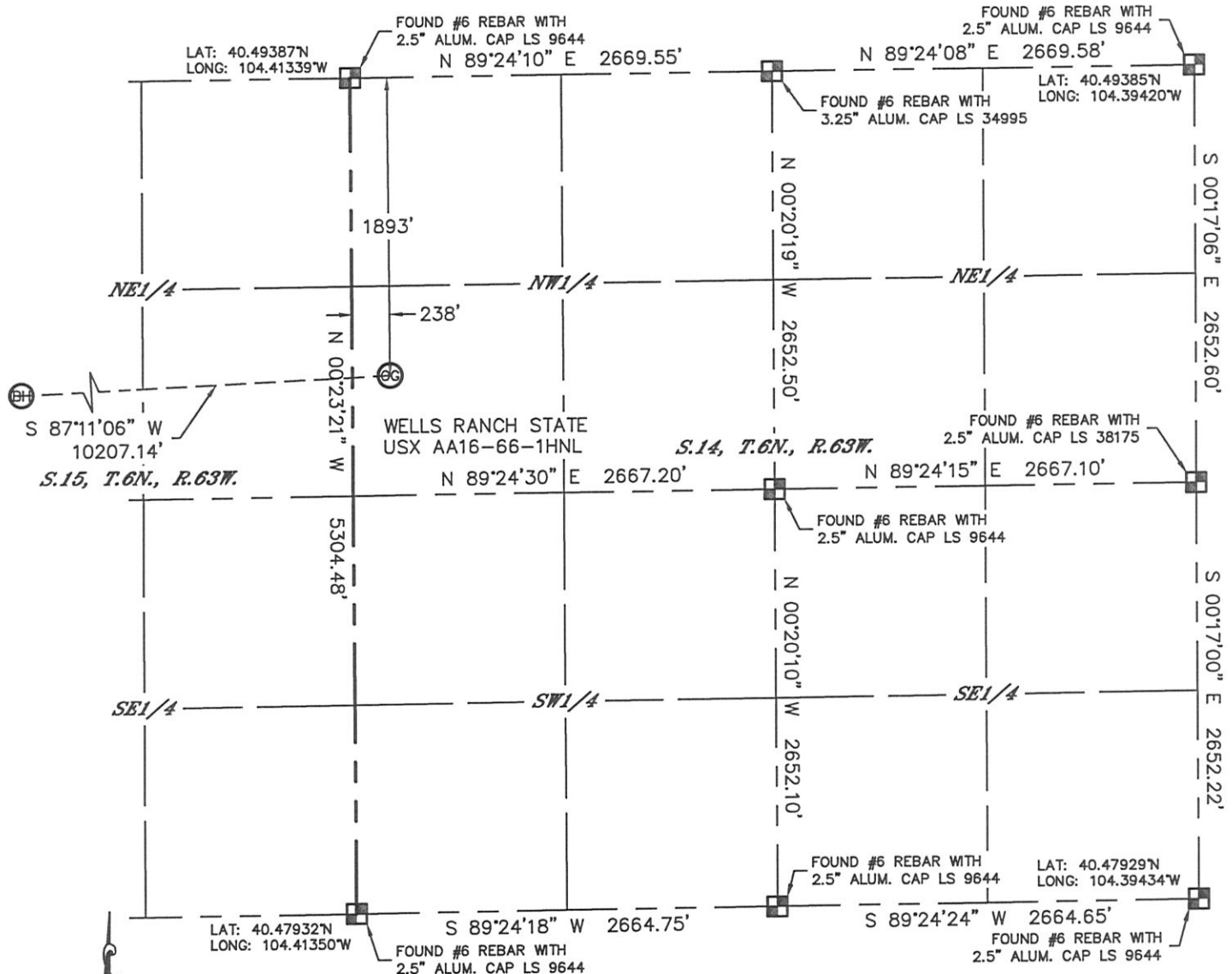


Lat40°, Inc. 1635 Foxtrail Drive, Suite 325 Loveland, CO 970-776-3321

WELL LOCATION CERTIFICATE

THIS MAP DOES NOT REPRESENT A BOUNDARY SURVEY

SECTION: 14
TOWNSHIP: 6N
RANGE: 63W



In accordance with a request from Matt Verbit with Noble Energy Inc. Lat40°, Inc. has determined the surface location of the WELLS RANCH STATE USX AA16-66-1HNL to be 1893' from the NORTH line and 238' from the WEST line as measured at right angles from the section lines of Section 14, Township 6 North, Range 63 West and the bottom hole to be 2310' from the NORTH line and 535' from the WEST line as measured at right angles from the section lines of Section 16, Township 6 North, Range 63 West of the Sixth Principal Meridian, County of Weld, State of Colorado.
I hereby state that this Well Location Certificate was prepared by me, or under my direct supervision, that the fieldwork was completed on 5/31/2012, for and on behalf of Noble Energy Inc. That this is not a Land Survey Plat or an Improvement Survey Plat, and that it is not to be relied upon for establishment of fence, building, or other future improvement lines.

NOTE:

- 1) Bearings shown are Grid Bearings of the Colorado State Plane Coordinate System, North Zone, North American Datum 1983/2007. The lineal dimensions as contained herein are based upon the "U.S. Survey Foot."
- 2) Ground elevations are based on an observed GPS elevation (NAVD 1988 DATUM).
- 3) NEAREST EXISTING WELL: NONE WITHIN SECTION
- 4) IMPROVEMENTS: See LOCATION DRAWING for all visible improvements within 400' of disturbed area.
- 5) SURFACE USE: RANGELAND
- 6) INSTRUMENT OPERATOR: ADAM KELLY

NOTE

According to Colorado law, you must commence any legal action based upon any defect in this W.L.C. within three years after you discover such defect. In no event, may any action based upon any defect in this survey be commenced more than ten years after the date of the certificate shown hereon. (13-80-105 C.R.S.)

LEGEND

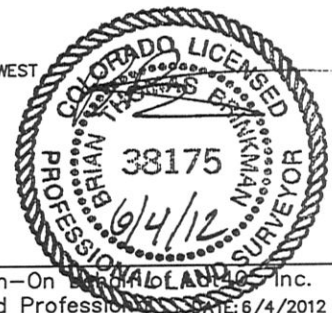
- = ALIQUOT MONUMENT AS DESCRIBED
- = CALCULATED POSITION

SURFACE LOCATION

LAT: 40.48868°N
LONG: 104.41257°W
PDOP: 1.4
ELEV: 4777'
1/4, 1/4: SW1/4NW1/4
NEAREST PROPERTY LINE: 238' WEST

BOTTOM HOLE

LAT: 40.48764°N
LONG: 104.44923°W



SHEET 1 OF 3

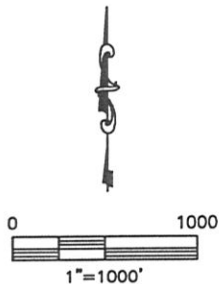
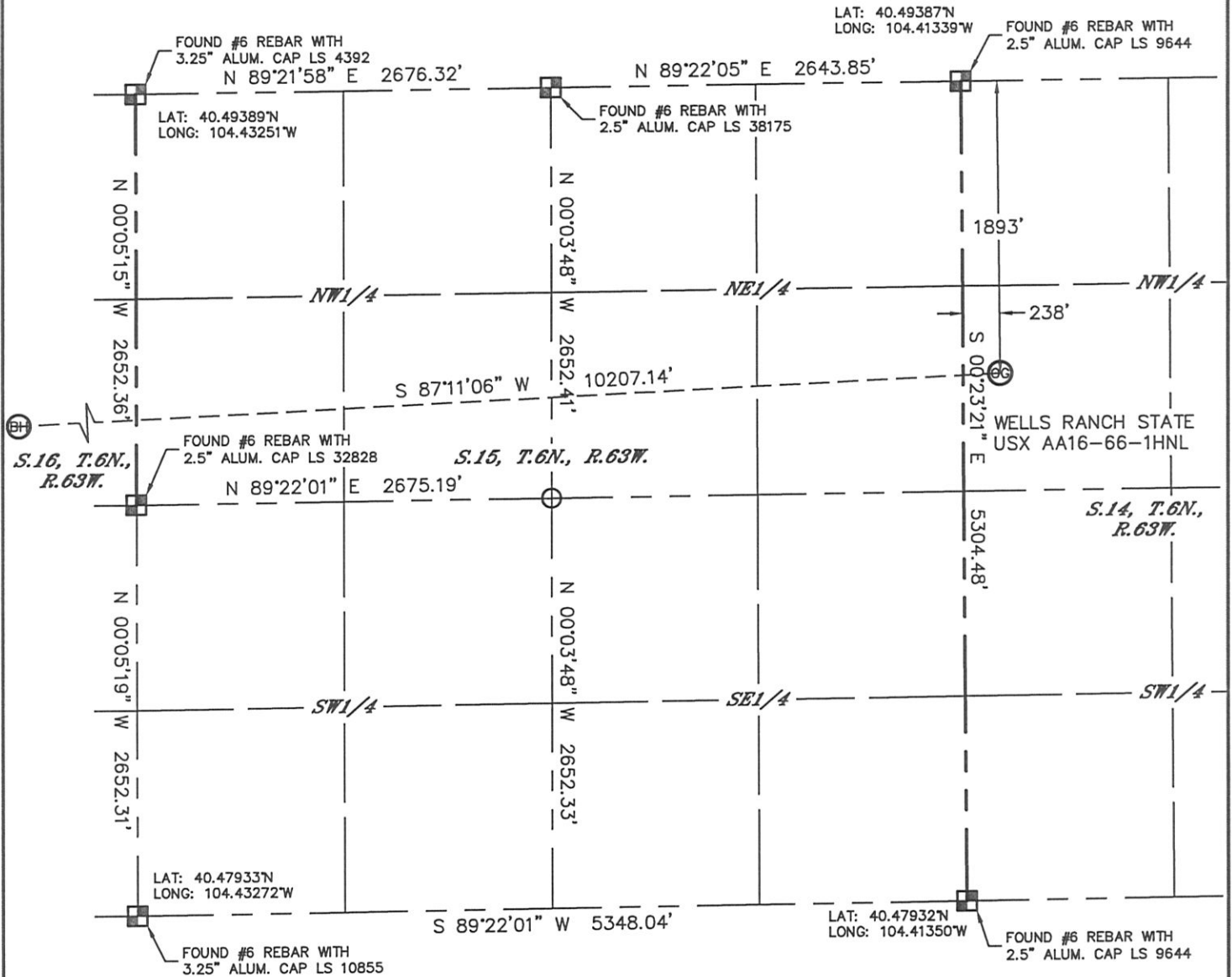
Brian T. Brinkman-On Behalf of Lat40°, Inc.
Colorado Licensed Professional Surveyor No. 38175
DATE: 6/4/2012
PROJECT#: 2012075

Lat40°, Inc. 1635 Foxtrail Drive, Suite 325 Loveland, CO 970-776-3321

WELL LOCATION CERTIFICATE

THIS MAP DOES NOT REPRESENT A BOUNDARY SURVEY

SECTION: 14
TOWNSHIP: 6N
RANGE: 63W



NOTE

According to Colorado law, you must commence any legal action based upon any defect in this W.L.C. within three years after you discover such defect. In no event, may any action based upon any defect in this survey be commenced more than ten years after the date of the certificate shown hereon. (13-80-105 C.R.S.)

LEGEND

- = ALIQUOT MONUMENT AS DESCRIBED
- = CALCULATED POSITION

SHEET 2 OF 3

Brian T. Brinkman-On Demand Land Survey, Inc.
Colorado Licensed Professional Land Surveyor No. 38175
DATE: 6/4/2012
PROJECT#: 2012075



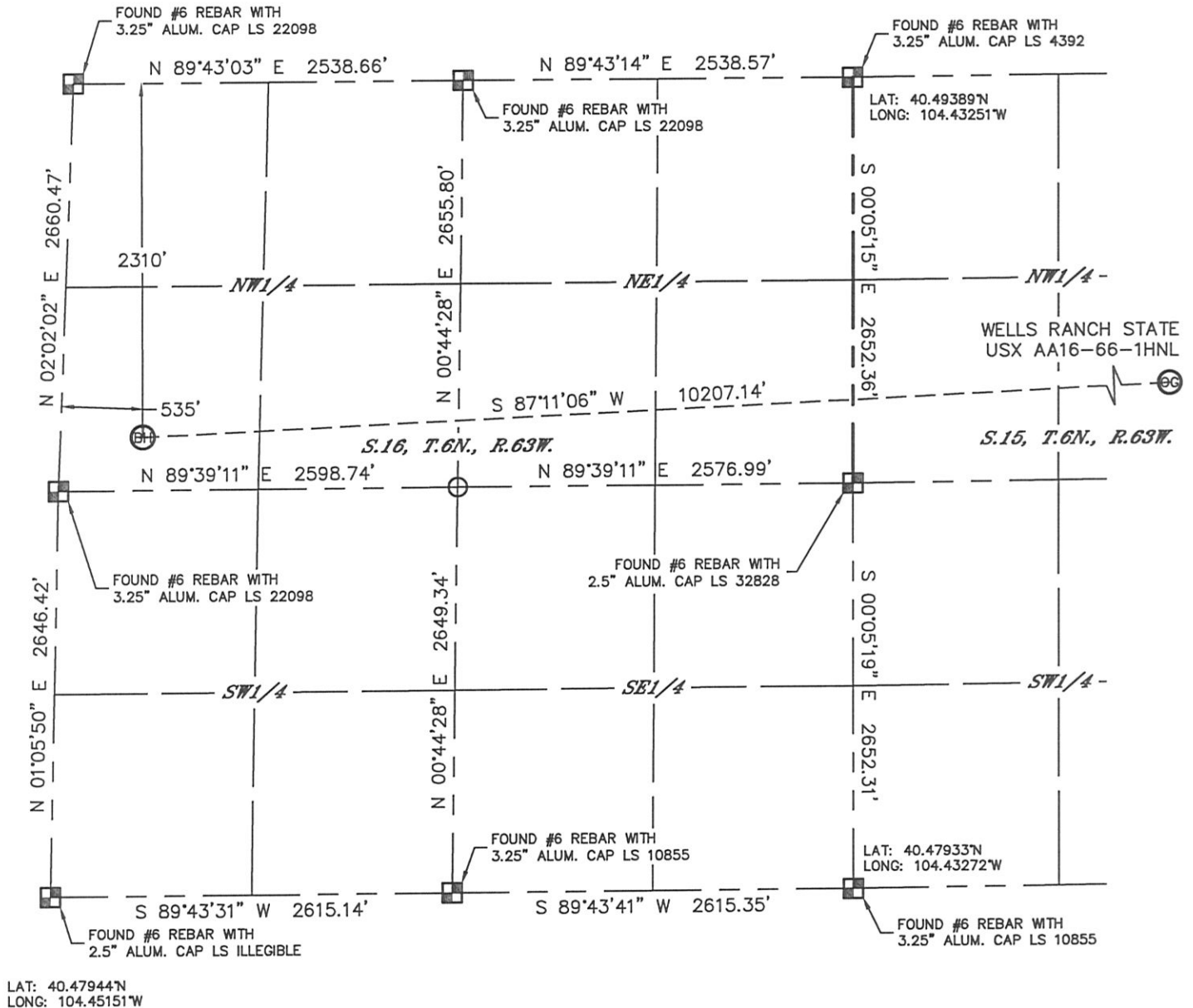
Lat40°, Inc. 1635 Foxtrail Drive, Suite 325 Loveland, CO 970-776-3321

WELL LOCATION CERTIFICATE

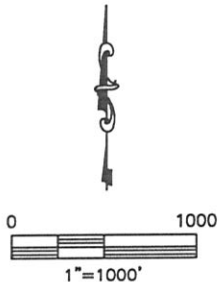
SECTION: 14
TOWNSHIP: 6N
RANGE: 63W

LAT: 40.49399°N
LONG: 104.45076°W

THIS MAP DOES NOT REPRESENT A BOUNDARY SURVEY





LAT: 40.47944°N
LONG: 104.45151°W



NOTE

According to Colorado law, you must commence any legal action based upon any defect in this W.L.C. within three years after you discover such defect. In no event, may any action based upon any defect in this survey be commenced more than ten years after the date of the certificate shown hereon. (13-80-105 C.R.S.)

LEGEND

-  = ALIQUOT MONUMENT AS DESCRIBED
-  = CALCULATED POSITION

SHEET 3 OF 3

Brian T. Brinkman-On Demand Land 405, Inc.
Colorado Licensed Professional Land Surveyor No. 38175
DATE: 6/4/2012
PROJECT#: 2012075

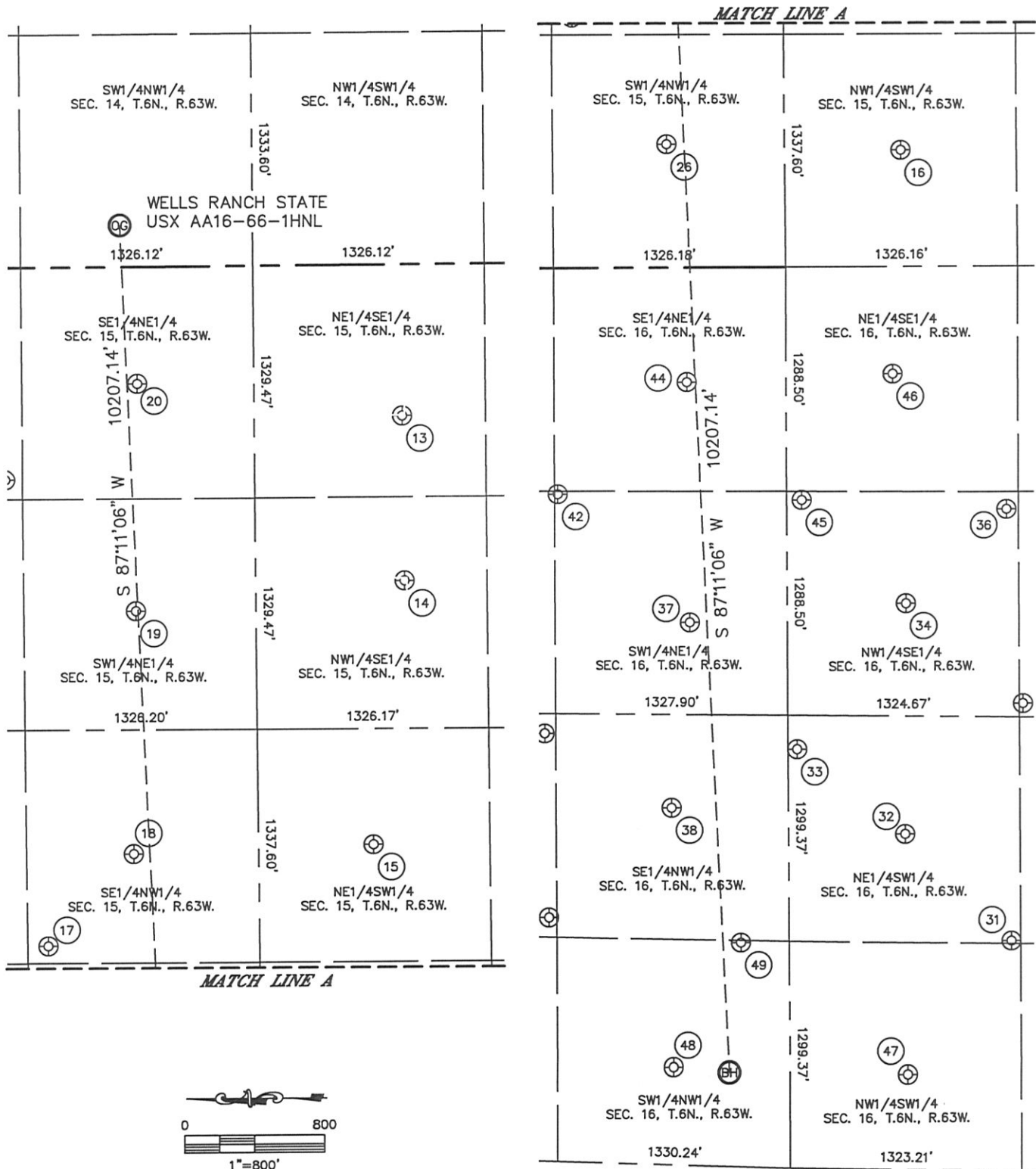


Lat40°, Inc. 1635 Foxtrail Drive, Suite 325 Loveland, CO 970-776-3321

SITE SKETCH

WELLS RANCH STATE USX AA16-66-1HNL
(1 OF 2)

SECTION: 14
TOWNSHIP: 6N
RANGE: 63W



DATE: 6/4/2012
PROJECT#: 2012075

SITE SKETCH

WELLS RANCH STATE USX AA16-66-1HNL
(2 OF 2)

SECTION: 14
TOWNSHIP: 6N
RANGE: 63W

13

WELLS RANCH 43-15
NE1/4SE1/4
1804' FSL
868' FEL
LAT-40.48427N
LONG-104.41658W
PDOP: 1.5
ELEV: 4761'

14

WELLS RANCH 33-15
NW1/4SE1/4
1801' FSL
1814' FEL
LAT-40.48427N
LONG-104.41998W
PDOP: 1.5
ELEV: 4743'

15

WELLS RANCH 23-15
NE1/4SW1/4
1994' FSL
2010' FWL
LAT-40.48480N
LONG-104.42542W
PDOP: 1.8
ELEV: 4732'

16

WELLS RANCH 13-15
NW1/4SW1/4
1989' FSL
669' FWL
LAT-40.48479N
LONG-104.43023W
PDOP: 1.5
ELEV: 4696'

17

WELLS RANCH USX AA15-19
SE1/4NW1/4
1444' FNL
1438' FWL
LAT-40.48992N
LONG-104.42740W
PDOP: 1.4
ELEV: 4729'

18

WELLS RANCH USX AA15-06
SE1/4NW1/4
1937' FNL
1964' FWL
LAT-40.48857N
LONG-104.42553W
PDOP: 1.4
ELEV: 4742'

19

WELLS RANCH USX AA15-07
SW1/4NE1/4
1966' FNL
1972' FEL
LAT-40.48849N
LONG-104.42052W
PDOP: 1.6
ELEV: 4755'

20

WELLS RANCH USX AA15-08
SE1/4NE1/4
1985' FNL
671' FEL
LAT-40.48843N
LONG-104.41584W
PDOP: 1.6
ELEV: 4776'

26

WELLS RANCH USX AA15-05
SW1/4NW1/4
1978' FNL
708' FWL
LAT-40.48846N
LONG-104.43005W
PDOP: 1.9
ELEV: 4705'

31

BASHOR STATE AA16-25
NE1/4SW1/4
1378' FSL
1319' FWL
LAT-40.48319N
LONG-104.44662W
PDOP: 2.4
ELEV: 4680'

32

BASHOR STATE AA16-11
NE1/4SW1/4
1981' FSL
1924' FWL
LAT-40.48483N
LONG-104.44437W
PDOP: 1.7
ELEV: 4681'

33

BASHOR STATE AA16-21
NE1/4SW1/4
2597' FSL
2403' FWL
LAT-40.48651N
LONG-104.44259W
PDOP: 1.4
ELEV: 4683'

34

BASHOR STATE AA16-10
NW1/4SE1/4
1971' FSL
1935' FEL
LAT-40.48478N
LONG-104.43960W
PDOP: 2.0
ELEV: 4683'

36

BASHOR STATE AA16-23
NW1/4SE1/4
1394' FSL
1397' FEL
LAT-40.48319N
LONG-104.43768W
PDOP: 2.0
ELEV: 4684'

37

BASHOR STATE AA16-07
SW1/4NE1/4
2096' FNL
2038' FEL
LAT-40.48818N
LONG-104.43992W
PDOP: 2.1
ELEV: 4685'

38

BASHOR STATE AA16-06
SE1/4NW1/4
1988' FNL
2045' FWL
LAT-40.48850N
LONG-104.44375W
PDOP: 2.1
ELEV: 4684'

42

BASHOR STATE AA16-17
SW1/4NE1/4
1345' FNL
1296' FEL
LAT-40.49022N
LONG-104.43723W
PDOP: 2.1
ELEV: 4687'

44

BASHOR STATE AA16-08
SE1/4NE1/4
2084' FNL
659' FEL
LAT-40.48818N
LONG-104.43496W
PDOP: 1.6
ELEV: 4686'

45

BASHOR STATE AA16-22
NW1/4SE1/4
2565' FSL
1339' FEL
LAT-40.48640N
LONG-104.43743W
PDOP: 1.6
ELEV: 4684'

46

BASHOR STATE AA16-09
NE1/4SE1/4
2042' FSL
617' FEL
LAT-40.48495N
LONG-104.43485W
PDOP: 1.5
ELEV: 4686'

47

BASHOR STATE AA16-12
NW1/4SW1/4
1974' FSL
543' FWL
LAT-40.48484N
LONG-104.44934W
PDOP: 1.4
ELEV: 4678'

48

BASHOR STATE AA16-05
SW1/4NW1/4
1991' FNL
556' FWL
LAT-40.48851N
LONG-104.44911W
PDOP: 1.4
ELEV: 4676'

49

BASHOR STATE AA16-20
SW1/4NW1/4
2379' FNL
1283' FWL
LAT-40.48744N
LONG-104.44656W
PDOP: 1.5
ELEV: 4677'