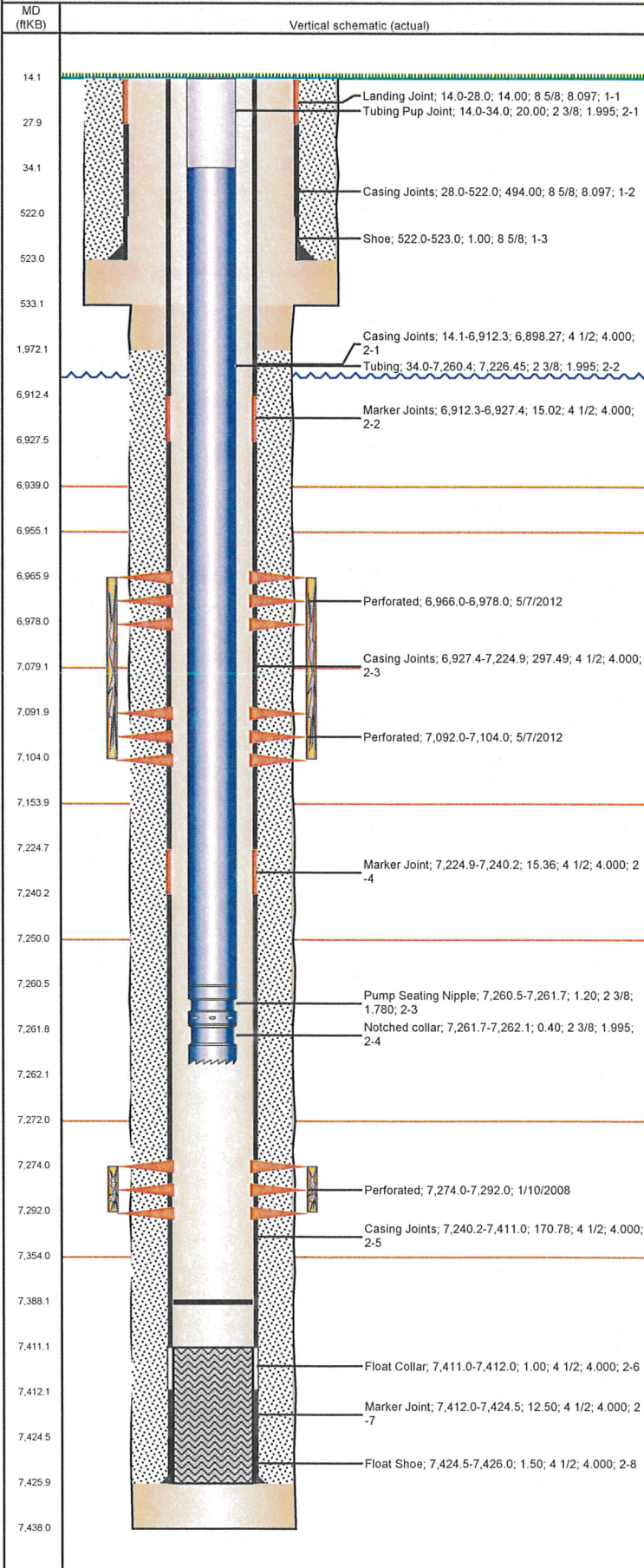


Well Name: MOEN J08-09

VERTICAL - ORIGINAL HOLE, 7/11/2012 10:23:40 AM



Well Header

API 05-123-23768	Business Unit WATTENBERG	District 15	Well Config VERTICAL
Original KB Elevation (ft) 4,817.00	KB - GL / MSL (ftKB) 14.00	Spud Date 12/10/2007	P & A Date

Comment

Directions To Well

Located in West Greeley, from Intersection of W. 10th ST & 77th AVE: South on 77th AVE 0.25 mile to pavement end, continue South on gravel road (private roads/field roads) 0.25 mile (past barn & corral area), Left (east/northeast) 0.20 mile, Right (south) 0.25 miles, Left (east/northeast) 0.10 mile to site.

Current PBD (ftKB)

ORIGINAL HOLE - 7,388.0

Surface Location (Congressional)

Quarter 1	Quarter 2	Quarter 3	Quarter 4	Section	Township	Twship N...	Range	Rng E/W Dir
		NE	SE	8	5	N	66	W

Bottom Hole Location

North-South Distance (ft)	From N or S Line	East-West Distance (ft)	From E or W Line
---------------------------	------------------	-------------------------	------------------

Plug Back Total Depths

Date	Depth (ftKB)	Method	Com
12/14/2007	7,411.0	CASING TALLY	ORIGINAL PBD, FLOAT COLLAR
1/9/2008	7,388.0	CASED HOLE LOG	DEPTH LOGGER

Wellbore Sections

Section Des	Size (in)	Act Top (ftKB)	Act Btm (ftKB)
Surface	12 1/4	14.0	533.0
Production	7 7/8	533.0	7,438.0

Zone Statuses

Zone Name	Status Date	Status	Job
NIOBRARA	5/9/2012	PR	RE-FRAC & RECOMPLETE, 4/30/2012 06:00
CODELL	1/26/2008	PR	DRILLING/COMPLETION - ORIGINAL, 12/9/2007 10:30
CODELL	5/9/2012	PR	RE-FRAC & RECOMPLETE, 4/30/2012 06:00

Casing Strings

Csg Des	Run Date	OD (in)	Wt/Len (lb/ft)	Grade	Top (ftKB)	Set Depth (ftKB)
Surface	12/11/2007	8 5/8	24.00	J-55	14.0	523.0
Production	12/14/2007	4 1/2	11.60	M-80	14.1	7,426.0

Cement

Des	Top (ftKB)	Btm (ftKB)
Surface Casing Cement	14.0	523.0
Production Casing Cement	1,972.0	7,426.0

Tubing Components

Item Des	OD (in)	Wt (lb/ft)	Grade	Jts	Len (ft)
Tubing Pup Joint	2 3/8	4.70	J-55	2	20.00
Tubing	2 3/8	4.70	J-55	233	7,226.45
Pump Sealing Nipple	2 3/8	1.10	N-80	1	1.20
Notched collar	2 3/8	4.70	J-55	1	0.40

Perforation Data

Zone	Bnch/St g	Entered Shot Total	Top (ftKB)	Btm (ftKB)	Date
NIOBRARA, ORIGINAL HOLE	A	24	6,966.0	6,978.0	5/7/2012
NIOBRARA, ORIGINAL HOLE	B	24	7,092.0	7,104.0	5/7/2012
CODELL, ORIGINAL HOLE		72	7,274.0	7,292.0	1/10/2008

Stimulations & Treatments

Bnch/Stg	Date	Zone	Primary Job Type
	1/24/2008	CODELL, ORIGINAL HOLE	DRILLING/COMPLETION - ORIGINAL

Comment

CODELL NEW DRILL FRAC WENT WELL. LOST A PUMP DURING THE 4 # STAGE. AVG NOLTE = +0.01.

Total Add Amount	Total Clean Volume...	Vol Slurry Tot (gal)	Vol Gas Tot (MCF)
Proppant Ottawa 280873 lb	5463990.13	5997768.11	
Avg Treat Pressure (psi)	Max Treat Pressure (psi)	Avg Treat Rate (bbl/min)	Max Treat Rate (bbl/min)
7,765.0	8,020.0	18.30	18.50

Well Name: MOEN J08-09

