

---

**WILLIAMS PRODUCTION RMT INC - EBUS**

---

**KP 534-8  
KOKOPELLI  
Garfield County , Colorado**

**Cement Surface Casing**  
**30-Nov-2011**

**Post Job Report**

## The Road to Excellence Starts with Safety

Sold To #: 300721	Ship To #: 2888941	Quote #:	Sales Order #: 9040482
Customer: WILLIAMS PRODUCTION RMT INC - EBUS	Customer Rep: Mulherin, Seth		
Well Name: KP	Well #: 534-8	API/UWI #:	
Field: KOKOPELLI	City (SAP): SILT	County/Parish: Garfield	State: Colorado
Lat: N 39.536 deg. OR N 39 deg. 32 min. 7.868 secs.	Long: W 107.579 deg. OR W -108 deg. 25 min. 14.437 secs.		
Contractor: Nabors Industries LTD.	Rig/Platform Name/Num: Nabors 574		
Job Purpose: Cement Surface Casing			
Well Type: Development Well	Job Type: Cement Surface Casing		
Sales Person: MAYO, MARK	Srvc Supervisor: TRIPLETT, MICHEAL	MBU ID Emp #:	447908

### Job Personnel

HES Emp Name	Exp Hrs	Emp #	HES Emp Name	Exp Hrs	Emp #	HES Emp Name	Exp Hrs	Emp #
BERGMAN, BENJAMIN Hillar	7.5	474194	DEUSSEN, EDWARD Eric	7.5	485182	JAMISON, PRICE W	7.5	229155
TRIPLETT, MICHEAL Anthony	7.5	447908	VANALSTYNE, TROY L	7.5	420256			

### Equipment

HES Unit #	Distance-1 way	HES Unit #	Distance-1 way	HES Unit #	Distance-1 way	HES Unit #	Distance-1 way
10001431	60 mile	10567589C	60 mile	10724643	60 mile	10951246	60 mile
10995027	60 mile						

### Job Hours

Date	On Location Hours	Operating Hours	Date	On Location Hours	Operating Hours	Date	On Location Hours	Operating Hours
12/11/2011	7.5	2						

TOTAL	Total is the sum of each column separately							
-------	--	--	--	--	--	--	--	--

### Job

Formation Name					Date	Time	Time Zone	
Formation Depth (MD)	Top		Bottom		Called Out	11 - Dec - 2011	10:00	MST
Form Type			BHST		On Location	11 - Dec - 2011	14:00	MST
Job depth MD	1275. ft		Job Depth TVD	1275. ft	Job Started	11 - Dec - 2011	19:35	MST
Water Depth			Wk Ht Above Floor	4. ft	Job Completed	30 - Nov - 2011	20:28	MST
Perforation Depth (MD)	From		To		Departed Loc	11 - Dec - 2011	21:30	MST

### Well Data

Description	New / Used	Max pressure psig	Size in	ID in	Weight lbm/ft	Thread	Grade	Top MD ft	Bottom MD ft	Top TVD ft	Bottom TVD ft
13 1/2" Open Hole				13.5				.	1275.		
9 5/8" Surface Casing	New		9.625	9.001	32.3		H-40	.	1275.		

### Sales/Rental/3<sup>rd</sup> Party (HES)

Description	Qty	Qty uom	Depth	Supplier
PLUG,CMTG,TOP,9 5/8,HWE,8.16 MIN/9.06 MA	1	EA		

### Tools and Accessories

Type	Size	Qty	Make	Depth	Type	Size	Qty	Make	Depth	Type	Size	Qty	Make
Guide Shoe					Packer					Top Plug			
Float Shoe					Bridge Plug					Bottom Plug			
Float Collar					Retainer					SSR plug set			
Insert Float										Plug Container			
Stage Tool										Centralizers			

### Miscellaneous Materials

Gelling Agt	Conc	Surfactant	Conc	Acid Type	Qty	Conc	%
Treatment Fld	Conc	Inhibitor	Conc	Sand Type	Size	Qty	

### Fluid Data

Stage/Plug #: 1

Fluid #	Stage Type	Fluid Name	Qty	Qty uom	Mixing Density lbm/gal	Yield ft <sup>3</sup> /sk	Mix Fluid Gal/sk	Rate bbl/min	Total Mix Fluid Gal/sk
1	Water Spacer		20.00	bbl	8.34			4.0	
2	VersaCem Lead Cement	VERSACEM (TM) SYSTEM (452010)	170.0	sacks	12.3	2.38	13.75	8.0	13.75
	13.75 Gal	FRESH WATER							
3	VersaCem Tail Cement	VERSACEM (TM) SYSTEM (452010)	160.0	sacks	12.8	2.11	11.75	8.0	11.75
	11.75 Gal	FRESH WATER							
4	Displacement Fluid		97.3	bbl	8.34			10.0	
<b>Calculated Values</b>		<b>Pressures</b>		<b>Volumes</b>					
Displacement	97.3	Shut In: Instant		Lost Returns	0	Cement Slurry	133	Pad	
Top Of Cement	SURFACE	5 Min		Cement Returns	5	Actual Displacement	97.3	Treatment	
Frac Gradient		15 Min		Spacers	20	Load and Breakdown		Total Job	235
<b>Rates</b>									
Circulating	14	Mixing	8	Displacement	10	Avg. Job			12
Cement Left In Pipe	Amount	43.38 ft	Reason	Shoe Joint					
Frac Ring # 1 @	ID		Frac ring # 2 @	ID		Frac Ring # 3 @	ID		Frac Ring # 4 @
The Information Stated Herein Is Correct				Customer Representative Signature					

*The Road to Excellence Starts with Safety*

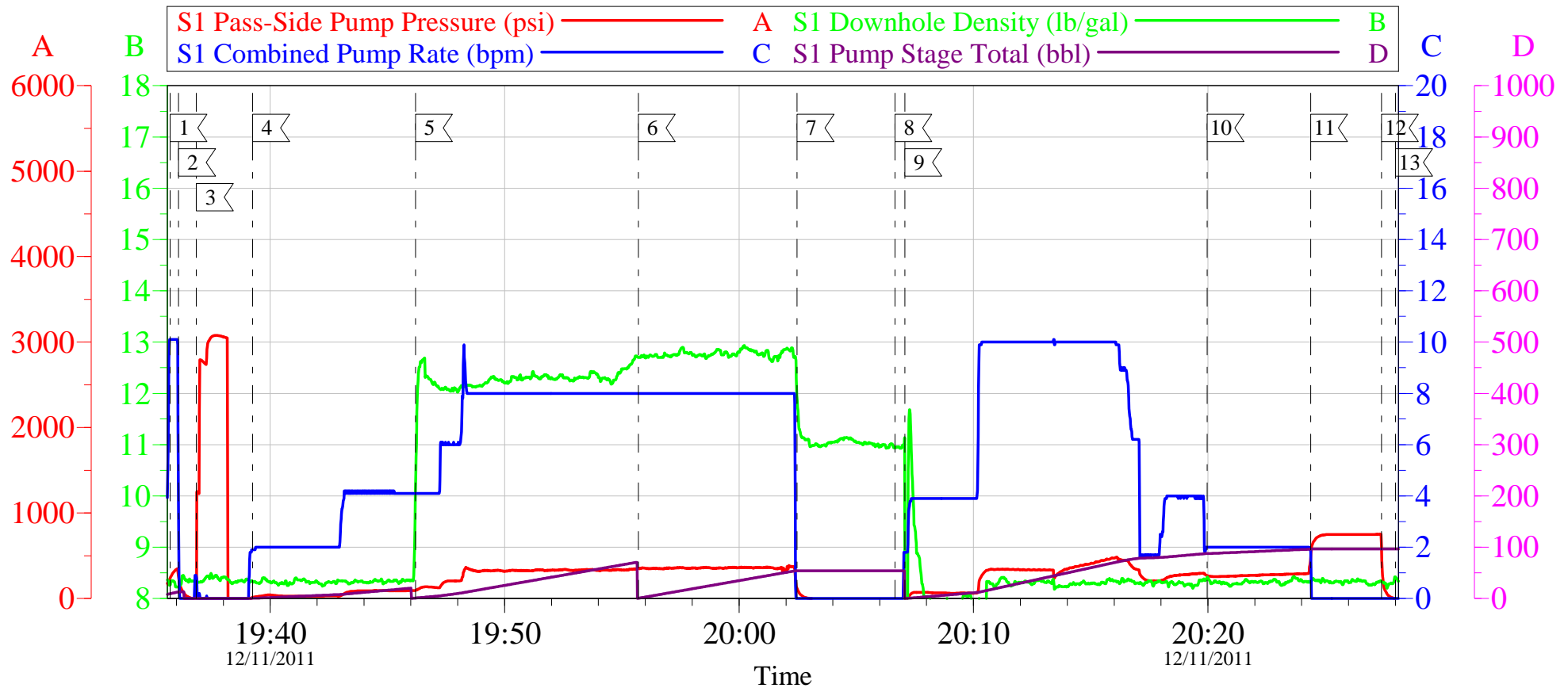
<b>Sold To #:</b> 300721	<b>Ship To #:</b> 2888941	<b>Quote #:</b>	<b>Sales Order #:</b> 9040482
<b>Customer:</b> WILLIAMS PRODUCTION RMT INC - EBUS		<b>Customer Rep:</b> Mulherin, Seth	
<b>Well Name:</b> KP	<b>Well #:</b> 534-8	<b>API/UWI #:</b>	
<b>Field:</b> KOKOPELLI	<b>City (SAP):</b> SILT	<b>County/Parish:</b> Garfield	<b>State:</b> Colorado
<b>Legal Description:</b>			
<b>Lat:</b> N 39.536 deg. OR N 39 deg. 32 min. 7.868 secs.		<b>Long:</b> W 107.579 deg. OR W -108 deg. 25 min. 14.437 secs.	
<b>Contractor:</b> Nabors Industries LTD.		<b>Rig/Platform Name/Num:</b> Nabors 574	
<b>Job Purpose:</b> Cement Surface Casing			<b>Ticket Amount:</b>
<b>Well Type:</b> Development Well		<b>Job Type:</b> Cement Surface Casing	
<b>Sales Person:</b> MAYO, MARK		<b>Srvc Supervisor:</b> TRIPLETT, MICHEAL	<b>MBU ID Emp #:</b> 447908

Activity Description	Date/Time	Cht #	Rate bbl/min	Volume bbl		Pressure psig		Comments
				Stage	Total	Tubing	Casing	
Call Out	12/11/2011 10:00							
Pre-Convoy Safety Meeting	12/11/2011 11:50							
Crew Leave Yard	12/11/2011 12:00							
Arrive At Loc	12/11/2011 14:15							RIG STILL PULLING DRILL PIPE
Assessment Of Location Safety Meeting	12/11/2011 14:20							
Other	12/11/2011 16:00							SPOT EQUIPMENT 1 RCM PUMP TRUCK, 1 660
Pre-Rig Up Safety Meeting	12/11/2011 16:10							GO OVER JSA AND HAVE CREW SIGN
Rig-Up Equipment	12/11/2011 16:15							
Pre-Job Safety Meeting	12/11/2011 19:20							GO OVER JOB PROCEDURES AND SAFETY INFORMATION
Start Job	12/11/2011 19:35							TD:1295, TP:1280, SJ:43.38, MW:9.5, CASING: 9.625" 32.3#, OH: 13.5"
Other	12/11/2011 19:36		2	2			38.0	FILL LINES
Test Lines	12/11/2011 19:37						3000	PRESSURE TEST PUMPS & LINES - STARTED WITH 3112 PSI, ENDED WITH 3092 PSI, LOST 20 PSI IN 1 MINUTES
Pump Spacer	12/11/2011 19:39		6	20			96.0	FRESH WATER

Activity Description	Date/Time	Cht #	Rate bbl/min	Volume bbl		Pressure psig		Comments
				Stage	Total	Tubing	Casing	
Pump Lead Cement	12/11/2011 19:46		8	72.1			347.0	170 SACKS MIXED @ 12.3, 2.38 YIELD, 13.75 GAL/SACK
Pump Tail Cement	12/11/2011 19:55		8	60.1			357.0	160 SACKS MIXED @ 12.8, 2.11 YIELD, 11.75 GAL/SACK
Shutdown	12/11/2011 20:02							
Drop Top Plug	12/11/2011 20:06							VERIFY PLUG LEFT
Pump Displacement	12/11/2011 20:07		10	97.3			487.0	FRESH WATER-HAD TO SLOW DOWN DUE TO WATER NOT COMING ON FAST ENOUGH FROM TANKS
Slow Rate	12/11/2011 20:19		2	87.3			280.0	SLOWED RATE LAST 10BBLs OF DISPLACEMENT
Bump Plug	12/11/2011 20:24			97.3			313.0	BUMP PLUG AND WENT 500PSI OVER
Check Floats	12/11/2011 20:27						764.0	FLOATS HELD
End Job	12/11/2011 20:28							HAD GOOD CIRCULATION THROUGHOUT JOB. GOT CEMENT RETURNS BACK TO SURFACE WITH 92 BARRELS GONE ON DISPLACEMENT, GOT 5 BARRELS OF CEMENT BACK TO SURFACE. NO ADDITIONAL WAIT TIME, NO DERRICK CHARGE. NO SURGAR USED.
Post-Job Safety Meeting (Pre Rig-Down)	12/11/2011 20:45							
Rig-Down Equipment	12/11/2011 20:50							
Pre-Convoy Safety Meeting	12/11/2011 21:15							
Crew Leave Location	12/11/2011 21:30							THANKS FOR USING HALLIBURTON MIKE TRIPLETT AND CREW

# WILLIAMS - KP 534-8

9 5/8" SURFACE



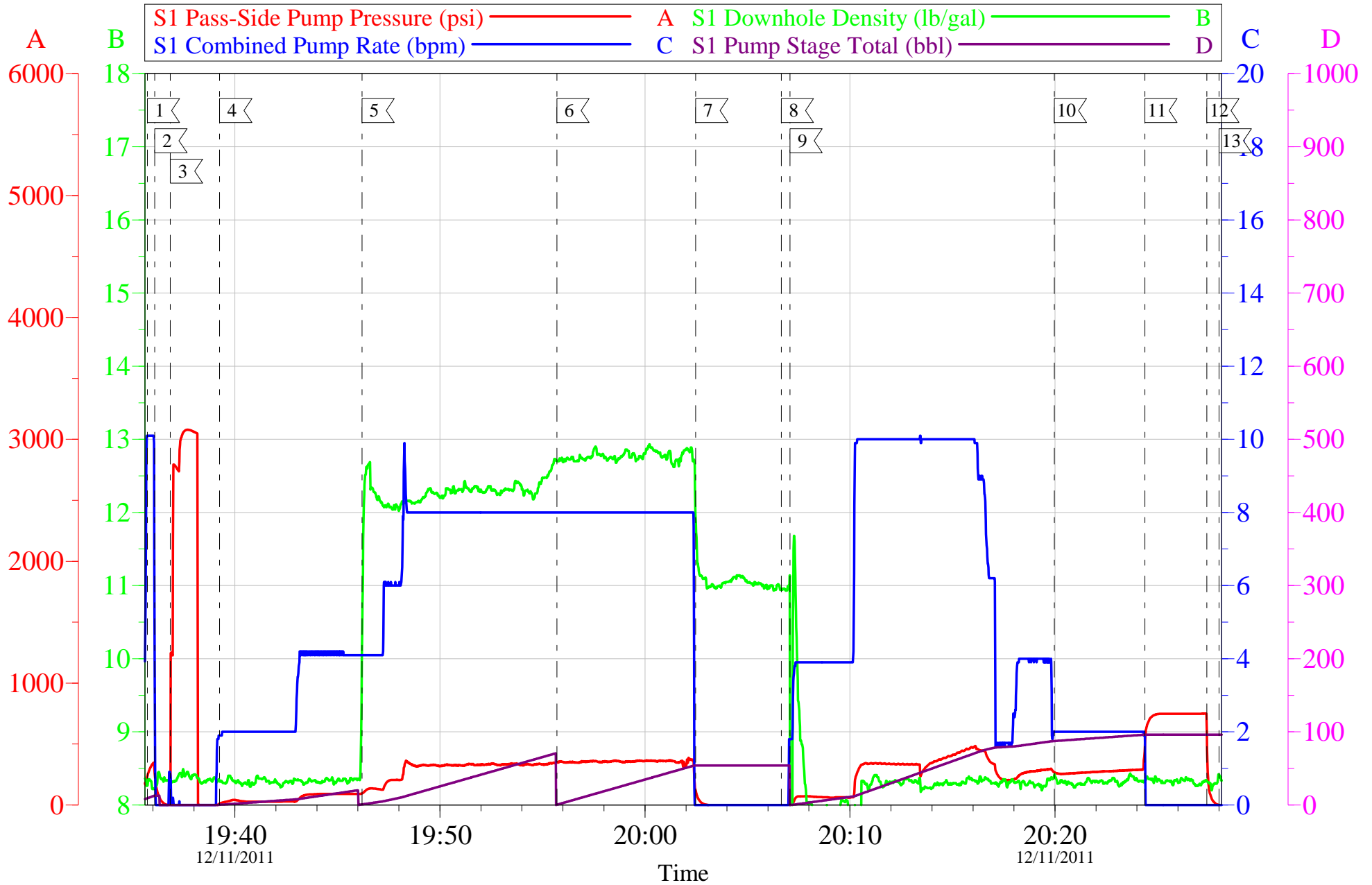
Local Event Log			
1	FILL LINES	19:35:44	2
2	START JOB	19:36:06	
3	PRESSURE TEST	19:36:51	4
4	START FRESHWATER SPACER	19:39:15	
5	START LEAD CEMENT	19:46:12	6
6	START TAIL CEMENT	19:55:42	
7	SHUTDOWN	20:02:29	8
8	DROP PLUG	20:06:39	
9	START DISPLACEMENT	20:07:04	10
10	SLOWRATE	20:19:58	
11	BUMP PLUG	20:24:23	12
12	CHECK FLOATS	20:27:24	
13	END JOB	20:28:00	

Customer:	WILLIAMS	Job Date:	11-Dec-2011	Sales Order #:	9040482
Well Description:	KP 534-8	Job Type:	SURFACE	ADC Used:	YES
Company Rep:	SETH MULHERIN	Cement Supervisor:	MIKE TRIPLETT	Elite #3:	MIKE TRIPLETT

OptiCem v6.4.9  
11-Dec-11 21:09

# WILLIAMS - KP 534-8

9 5/8" SURFACE



Customer:	WILLIAMS	Job Date:	11-Dec-2011	Sales Order #:	9040482
Well Description:	KP 534-8	Job Type:	SURFACE	ADC Used:	YES
Company Rep:	SETH MULHERIN	Cement Supervisor:	MIKE TRIPLETT	Elite #3:	MIKE TRIPLETT

OptiCem v6.4.9  
11-Dec-11 21:09

# HALLIBURTON

## Water Analysis Report

Company: WILLIAMS  
Submitted by: MIKE TRIPLETT  
Attention: LAB  
Lease: RWF  
Well #: 534-8

Date: 12/11/2011  
Date Rec.: 12/11/2011  
S.O.#: 9040482  
Job Type: SURFACE

Specific Gravity	MAX	1
pH	8	6
Potassium (K)	5000	450 Mg / L
Calcium (Ca)	500	50 Mg / L
Iron (FE2)	300	0 Mg / L
Chlorides (Cl)	3000	0 Mg / L
Sulfates (SO <sub>4</sub> )	1500	200 Mg / L
Chlorine (Cl <sub>2</sub> )		0 Mg / L
Temp	40-80	44 Deg
Total Dissolved Solids		50 Mg / L

Respectfully: MIKE TRIPLETT

Title: CEMENTING SUPERVISOR

Location: Grand Junction, CO

**NOTICE:**

This report is limited to the described sample tested. Any person using or relying on this report agrees that Halliburton shall not be liable for any loss or damage whether due to act or omission resulting from such report or its use.



<b>Sales Order #:</b> 9040482	<b>Line Item:</b> 10	<b>Survey Conducted Date:</b> 12/11/2011
<b>Customer:</b> WILLIAMS PRODUCTION RMT INC - EBUS		<b>Job Type (BOM):</b> CMT SURFACE CASING BOM
<b>Customer Representative:</b> SETH MULHERIN		<b>API / UWI: (leave blank if unknown)</b> AFEYKQMHP1J0VNTAAAA
<b>Well Name:</b> KP		<b>Well Number:</b> 534-8
<b>Well Type:</b> Development Well	<b>Well Country:</b> United States of America	
<b>H2S Present:</b> No	<b>Well State:</b> Colorado	<b>Well County:</b> Garfield

Dear Customer,

We hope that you were satisfied with the service quality of this job performed by Halliburton. It is the aim of our management and service personnel to deliver equipment and service of a standard unmatched in the service sector of the energy industry.

Please take the time to let us know if our performance met with your satisfaction. Please be as critical as possible to ensure we constantly improve our service. Your comments are of great value to us and are intended for the exclusive use of Halliburton.

### CUSTOMER SATISFACTION SURVEY

CATEGORY	CUSTOMER SATISFACTION RESPONSE	
Survey Conducted Date	The date the survey was conducted	12/11/2011
Survey Interviewer	The survey interviewer is the person who initiated the survey.	MICHEAL TRIPLETT (HB15721)
Customer Participation	Did the customer participate in this survey? (Y/N)	Yes
Customer Representative	Enter the Customer representative name	SETH MULHERIN
HSE	Was our HSE performance satisfactory? Circle Y or N	Yes
Equipment	Were you satisfied with our Equipment? Circle Y or N	Yes
Personnel	Were you satisfied with our people? Circle Y or N	Yes
Customer Comment	Customer's Comment	

CUSTOMER SIGNATURE

<b>Sales Order #:</b> 9040482	<b>Line Item:</b> 10	<b>Survey Conducted Date:</b> 12/11/2011
<b>Customer:</b> WILLIAMS PRODUCTION RMT INC - EBUS		<b>Job Type (BOM):</b> CMT SURFACE CASING BOM
<b>Customer Representative:</b> SETH MULHERIN		<b>API / UWI: (leave blank if unknown)</b> AFEYKQMHP1J0VNTAAAA
<b>Well Name:</b> KP		<b>Well Number:</b> 534-8
<b>Well Type:</b> Development Well	<b>Well Country:</b> United States of America	
<b>H2S Present:</b> No	<b>Well State:</b> Colorado	<b>Well County:</b> Garfield

*KEY PERFORMANCE INDICATORS*

General	
<b>Survey Conducted Date</b> The date the survey was conducted	12/11/2011

Cementing KPI Survey	
<b>Type of Job</b> Select the type of job. (Cementing or Non-Cementing)	0
<b>Select the Maximum Deviation range for this Job</b> What is the highest deviation for the job you just completed? This may not be the maximum well deviation.	Vertical
<b>Total Operating Time (hours)</b> Total Operating Hours Including Rig-up, Pumping, Rig-down. Enter in decimal format.	3
<b>HSE Incident, Accident, Injury</b> HSE Incident, Accident, Injury. This should be recordable incidents only.	No
<b>Was the job purpose achieved?</b> Was the job delivered correctly as per customer agreed design?	Yes
<b>Operating Hours (Pumping Hours)</b> Total number of hours pumping fluid on this job. Enter in decimal format.	2
<b>Customer Non-Productive Rig Time (hrs)</b> Lost time due to Halliburton in the start, execution, or completion of an ordered service or product, or delays in a follow-on service. Enter in decimal format. 0 if none.	0
<b>Type of Rig Classification Job Was Performed</b> Type Of Rig (classification) Job Was Performed On	Drilling Rig (Portable)
<b>Number Of JSAs Performed</b> Number Of Jsas Performed	7
<b>Number of Unplanned Shutdowns</b> Unplanned shutdown is when injection stops for any period of time.	0
<b>Was this a Primary Cement Job (Yes / No)</b>	Yes

<b>Sales Order #:</b> 9040482	<b>Line Item:</b> 10	<b>Survey Conducted Date:</b> 12/11/2011
<b>Customer:</b> WILLIAMS PRODUCTION RMT INC - EBUS		<b>Job Type (BOM):</b> CMT SURFACE CASING BOM
<b>Customer Representative:</b> SETH MULHERIN		<b>API / UWI: (leave blank if unknown)</b> AFEYKQMHP1J0VNTAAAA
<b>Well Name:</b> KP		<b>Well Number:</b> 534-8
<b>Well Type:</b> Development Well	<b>Well Country:</b> United States of America	
<b>H2S Present:</b> No	<b>Well State:</b> Colorado	<b>Well County:</b> Garfield

Primary Cement Job= Casing job, Liner job, or Tie-back job.	
<b>Did We Run Wiper Plugs?</b> Did We Run Top And Bottom Casing Wiper Plugs?	Top
<b>Mixing Density of Job Stayed in Designed Density Range (0-100%)</b> Density Range defined as +/- .20 ppg. Calculation: Total BBLs cement mixed at designed density divided by total BBLs of cement multiplied by 100	95
<b>Was Automated Density Control Used?</b> Was Automated Density Control (ADC) Used ?	Yes
<b>Pump Rate (percent) of Job Stayed At Designed Pump Rate</b> Pump Rate range defined as +/- 1bbl/min. Calculation: Total BBLs of fluid pumped at the designed rate divided by Total BBLs of fluid pumped, multiplied by 100	95
<b>Nbr of Remedial Sqz Jobs Rqd - Competition</b> Number Of Remedial Squeeze Jobs Required After Primary Job Performed By Competition	0
<b>Nbr of Remedial Plug Jobs Rqd - HES</b> Number Of Remedial Plug Jobs Needed After Primary Plug Pumped By HES	0
<b>Nbr of Remedial Sqz Jobs Rqd - HES</b> Number Of Remedial Squeeze Jobs Required After Primary Job Performed By HES	0