
ENCANA OIL & GAS (USA) INC. - EBUS

**Twin Creek 12-3D-1
MAMM CREEK
Garfield County , Colorado**

Squeeze Open Hole
09-Jun-2012

Job Site Documents

The Road to Excellence Starts with Safety

Sold To #: 340078	Ship To #: 2923157	Quote #:	Sales Order #: 9577424
Customer: ENCANA OIL & GAS (USA) INC. - EBUS	Customer Rep: CHRISTENSEN, DARRELL		
Well Name: Twin Creek	Well #: 12-3D-1	API/UWI #: 05-045-20386	
Field: MAMM CREEK	City (SAP): SILT	County/Parish: Garfield	State: Colorado
Lat: N 39.462 deg. OR N 39 deg. 27 min. 43.38 secs.	Long: W 107.619 deg. OR W -108 deg. 22 min. 52.428 secs.		
Contractor: Workover	Rig/Platform Name/Num: Workover		
Job Purpose: Squeeze Open Hole			
Well Type: Development Well	Job Type: Squeeze Open Hole		
Sales Person: PRUETT, BRADLEY	Srv Supervisor: MAGERS, MICHAEL	MBU ID Emp #: 339439	

Job Personnel

HES Emp Name	Exp Hrs	Emp #	HES Emp Name	Exp Hrs	Emp #	HES Emp Name	Exp Hrs	Emp #
EICKHOFF, ROBERT Edward	5	495311	MAGERS, MICHAEL Gerard	5	339439	REID, CONNALLY	5	522601
SINCLAIR, DAN J	5	338784	WALPOLE, DARREN Livingston	5	485294			

Equipment

HES Unit #	Distance-1 way	HES Unit #	Distance-1 way	HES Unit #	Distance-1 way	HES Unit #	Distance-1 way

Job Hours

Date	On Location Hours	Operating Hours	Date	On Location Hours	Operating Hours	Date	On Location Hours	Operating Hours
06/09/2012	5	2.5						
TOTAL			Total is the sum of each column separately					

Job

Job Times

Formation Name	Formation Depth (MD)	Top	Bottom	Called Out	Date	Time	Time Zone
Form Type			BHST	On Location	09 - Jun - 2012	07:00	MST
Job depth MD	2860. ft		Job Depth TVD	Job Started	09 - Jun - 2012	08:53	MST
Water Depth			Wk Ht Above Floor	Job Completed	09 - Jun - 2012	11:34	MST
Perforation Depth (MD)	From		To	Departed Loc	09 - Jun - 2012	12:30	MST

Well Data

Description	New / Used	Max pressure psig	Size in	ID in	Weight lbm/ft	Thread	Grade	Top MD ft	Bottom MD ft	Top TVD ft	Bottom TVD ft
-------------	------------	-------------------	---------	-------	---------------	--------	-------	-----------	--------------	------------	---------------

Sales/Rental/3rd Party (HES)

Description	Qty	Qty uom	Depth	Supplier
PORT. DATA ACQUIS. W/OPTICEM RT W/HES	1	EA		
ADC (AUTO DENSITY CTRL) SYS, /JOB,ZI	1	JOB		
R/A DENSOMETER W/CHART RECORDER,/JOB,ZI	1	JOB		

Tools and Accessories

Type	Size	Qty	Make	Depth	Type	Size	Qty	Make	Depth	Type	Size	Qty	Make
Guide Shoe					Packer				2860	Top Plug			
Float Shoe					Bridge Plug					Bottom Plug			
Float Collar					Retainer					SSR plug set			
Insert Float										Plug Container			
Stage Tool										Centralizers			

Miscellaneous Materials

Gelling Agt	Conc	Surfactant	Conc	Acid Type	Qty	Conc	%
Treatment Fld	Conc	Inhibitor	Conc	Sand Type	Size	Qty	

Fluid Data

Stage/Plug #: 1	Fluid #	Stage Type	Fluid Name	Qty	Qty uom	Mixing Density lbm/gal	Yield ft ³ /sk	Mix Fluid Gal/sk	Rate bbl/min	Total Mix Fluid Gal/sk
-----------------	---------	------------	------------	-----	---------	------------------------	---------------------------	------------------	--------------	------------------------

1	Water Spacer		10.00	bbl	8.33	.0	.0	2.0	
2	SQUEEZECM	SQUEEZECM (TM) SYSTEM (452971)	100.0	sacks	15.8	1.15	5.0	.0	5.0
	5 Gal	FRESH WATER							
3	Water Displacement		12.00	bbl	8.33	.0	.0	2.0	
Calculated Values		Pressures	Volumes						
Displacement	12	Shut In: Instant		Lost Returns	0	Cement Slurry	19.1	Pad	
Top Of Cement		5 Min		Cement Returns	0	Actual Displacement	11.75	Treatment	
Frac Gradient		15 Min		Spacers	10	Load and Breakdown		Total Job	63
Rates									
Circulating		Mixing	2	2		Avg. Job		2	
Cement Left In Pipe	Amount	0 ft	Reason	Shoe Joint					
Frac Ring # 1 @	ID	Frac ring # 2 @	ID	Frac Ring # 3 @	ID	Frac Ring # 4 @	ID		
The Information Stated Herein Is Correct				Customer Representative Signature					

The Road to Excellence Starts with Safety

Sold To #: 340078	Ship To #: 2923157	Quote #:	Sales Order #: 9577424
Customer: ENCANA OIL & GAS (USA) INC. - EBUS	Customer Rep: BRADLEY, PRUETT CHRISTENSEN, DARRELL		
Well Name: Twin Creek	Well #: 12-3D-1	API/UWI #: 05-045-20386	
Field: MAMM CREEK	City (SAP): SILT	County/Parish: Garfield	State: Colorado
Legal Description:			
Lat: N 39.462 deg. OR N 39 deg. 27 min. 43.38 secs.		Long: W 107.619 deg. OR W -108 deg. 22 min. 52.428 secs.	
Contractor: Workover	Rig/Platform Name/Num: Workover		
Job Purpose: Squeeze Open Hole		Ticket Amount:	
Well Type: Development Well	Job Type: Squeeze Open Hole		
Sales Person: PRUETT, BRADLEY	Srvc Supervisor: MAGERS, MICHAEL	MBU ID Emp #: 339439	

Activity Description	Date/Time	Cht #	Rate bbl/ min	Volume bbl		Pressure psig		Comments
				Stage	Total	Tubing	Casing	
Call Out	06/09/2012 01:00							ALL HES PERSONNEL
Pre-Convoy Safety Meeting	06/09/2012 03:00							ALL HES PERSONNEL
Crew Leave Yard	06/09/2012 03:30							ALL HES PERSONNEL
Arrive At Loc	06/09/2012 05:00							HES ARRIVED 2 HRS EARLY TIME STARTS AT 7:00
Assessment Of Location Safety Meeting	06/09/2012 07:00							LOCATION IN GOOD CONDITION
Pre-Rig Up Safety Meeting	06/09/2012 07:20							JSA ON RIGGING UP
Rig-Up Equipment	06/09/2012 07:30							1 PICKUP 1 ELITE 1 BODY LOAD 1 WATER TRUCK
Safety Huddle	06/09/2012 08:30							RIG CREW AND HES CREW ALL PRESENT
Start Job	06/09/2012 08:53							TUBING 2 3/8" 4.7# AT 2680' CASING 4.5 11.6# AT 3007-3011' BRIDGE PLUG AT 3070'
Injection Test	06/09/2012 08:54		1.7	10		3150. 0		PUMP INJECTION WATER
Shutdown	06/09/2012 09:02							
ISIP	06/09/2012 09:05					1983. 0		ESTABLISH ISIP
Pressure Test	06/09/2012 09:12		0.5	0.5			4660. 0	PSI TEST OK
Pump Cement	06/09/2012 09:25		2	19.1				SQUEEZECEM 100 SKS 15.8 PPG 1.15 FT3/SK 4.98 GAL/SK
Pump Displacement	06/09/2012 09:40		2	11		3082. 0		FRESH WATER

Sold To #: 340078

Ship To #: 2923157

Quote #:

Sales Order #:

9577424

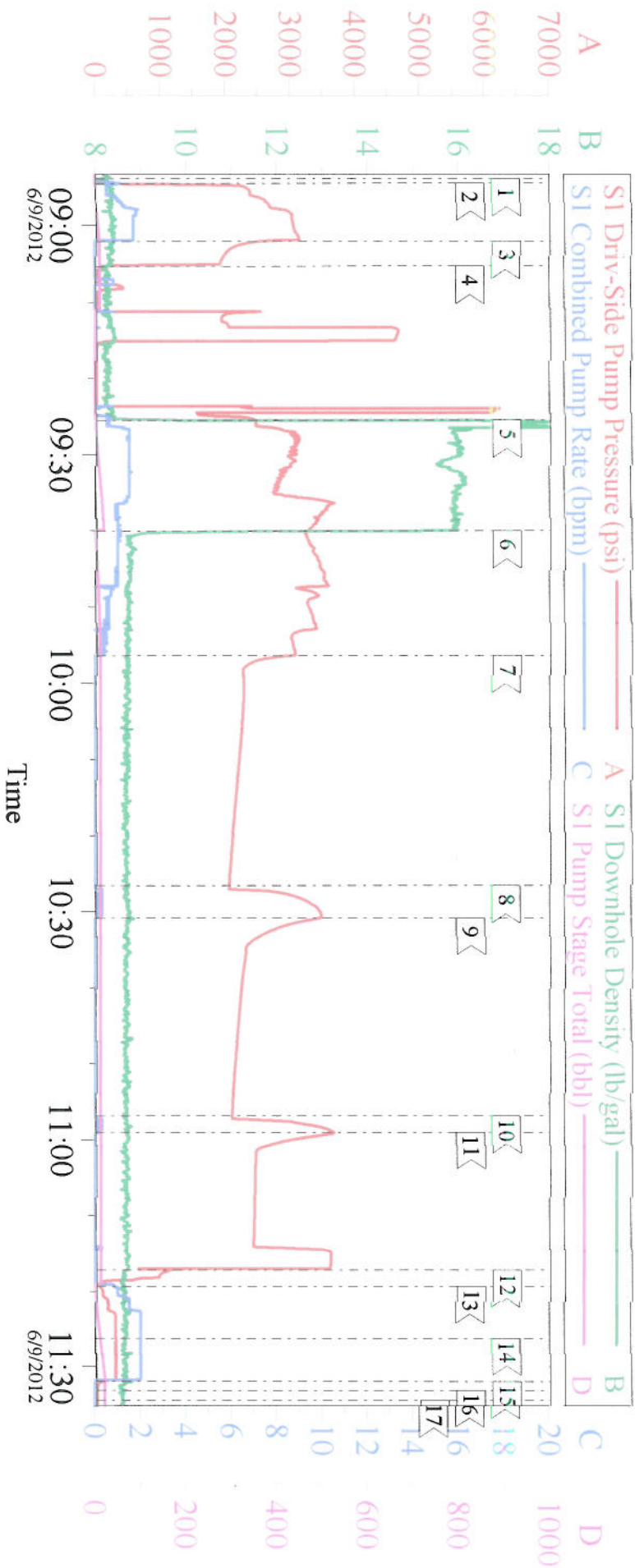
SUMMIT Version: 7.3.0030

Saturday, June 09, 2012 12:52:00

Cementing Job Log

Activity Description	Date/Time	Cht	Rate bbl/ min	Volume bbl		Pressure psig		Comments
		#		Stage	Total	Tubing	Casing	
Shutdown	06/09/2012 09:56			11		3082. 0		WAIT 30 MINUTES BEFORE HESITATION SQUEEZE
Stage Cement	06/09/2012 10:26		0.5	0.5		3490. 0		SQUEEZE CEMENT FROM 2065 PSI TO 3490 PSI
Shutdown	06/09/2012 10:30							WAIT 30 MINUTES BEFORE HESITATION SQUEEZE
Stage Cement	06/09/2012 10:56		0.25	0.25		3685. 0		SQUEEZE CEMENT FROM 2110 PSI TO 3685 PSI
Shutdown	06/09/2012 10:59							WAIT 15 MINUTES BEFORE HESITATION SQUEEZE
Stage Cement	06/09/2012 11:14		0.25	0.25		3638. 0		SQUEEZE CEMENT FROM 2445 PSI TO 3638 PSI
Release Packer	06/09/2012 11:19							
Reverse Circ Well	06/09/2012 11:20		2	22		320.0		FRESH WATER
Shutdown	06/09/2012 11:33							USED 50 LBS OF SUGAR
Check Weight (Pull Out Of Hole)	06/09/2012 11:34							TURNTD OVER TO RIG TO POOH
End Job	06/09/2012 12:24							THANKS FOR USING HES AND THE CREW OF MIKE MAGERS

ENCANA TWIN CREEK 12-3D-1 SQUEEZE



Customer:	ENCANA	Job Date:	09-Jun-2012	Sales Order #:	9577424
Well Description:	TWIN CREEK 12-3D-1	Job Type:	SQUEEZE	ADC Used:	NO
Company Rep:	TONY	Cement Supervisor:	MIKE MAGERS	Elite #	7
					ROB EICKHOFF