

GREAT WESTERN OIL & GAS COMPANY

FRITZLER #17-23-18, #6-6-17,
#17-32-12, #43-17 & #17-42-11
LOCATED IN WELD COUNTY, COLORADO
SECTION 17, T6N, R66W, 6th P.M.

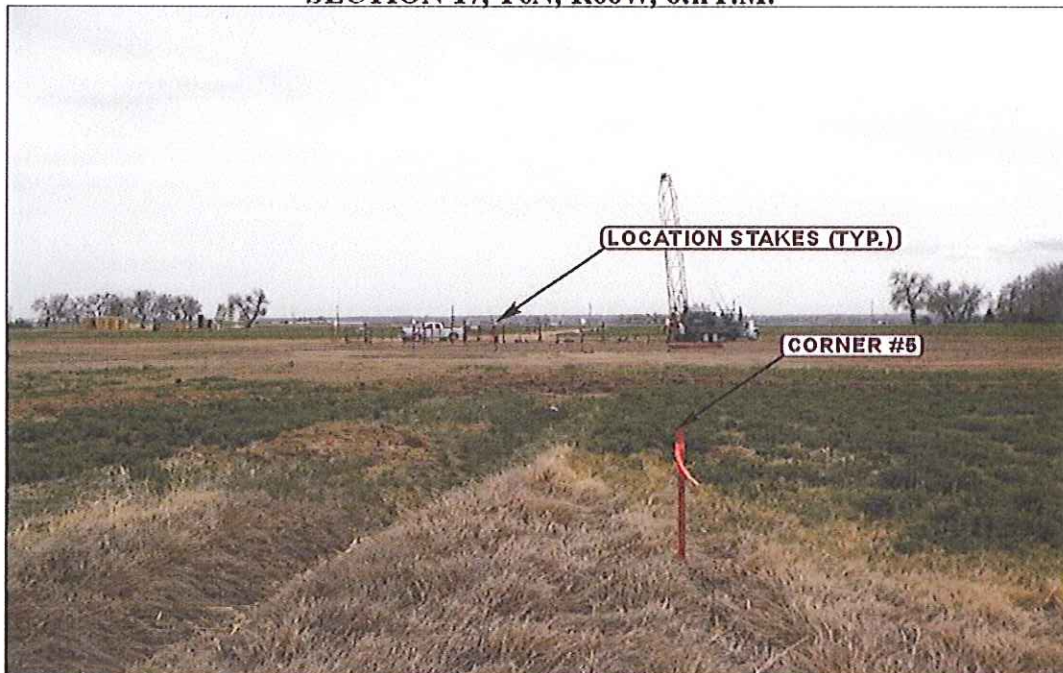


PHOTO: VIEW FROM CORNER #5 TO LOCATION STAKES

CAMERA ANGLE: SOUTHERLY



PHOTO: VIEW FROM BEGINNING OF EXISTING ACCESS

CAMERA ANGLE: WESTERLY



Uintah Engineering & Land Surveying
85 South 200 East Vernal, Utah 84078
(435) 789-1017 * FAX (435) 789-1813

LOCATION PHOTOS

04 27 12
MONTH DAY YEAR

TAKEN BY: D.N. DRAWN BY: J.L.H. REV: 05-18-12 B.D.J.H.

PHOTO
P1

GREAT WESTERN OIL & GAS COMPANY

FRITZLER #17-23-18, #6-6-17,
#17-32-12, #43-17 & #17-42-11
LOCATED IN WELD COUNTY, COLORADO
SECTION 17, T6N, R66W, 6th P.M.

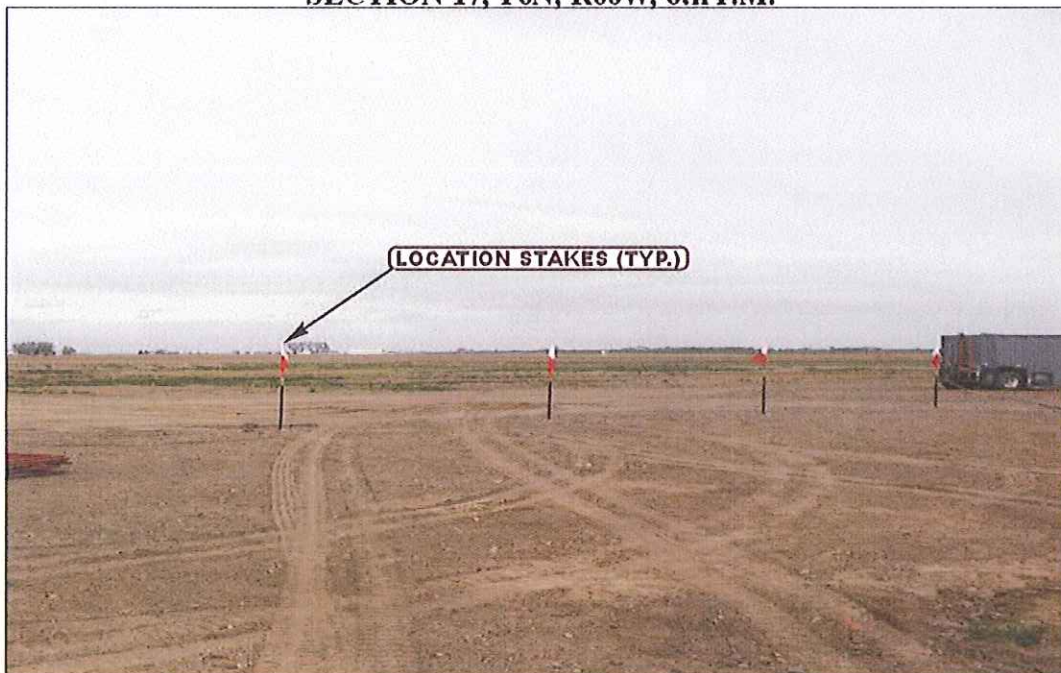


PHOTO: VIEW OF LOCATION STAKES

CAMERA ANGLE: NORTHERLY



PHOTO: VIEW OF LOCATION STAKES

CAMERA ANGLE: EASTERLY



- Since 1964 -



Uintah Engineering & Land Surveying
85 South 200 East Vernal, Utah 84078
(435) 789-1017 * FAX (435) 789-1813

LOCATION PHOTOS

04 27 12
MONTH DAY YEAR

PHOTO
P2

TAKEN BY: D.N. DRAWN BY: J.L.H. REV: 05-18-12 B.D.H.

GREAT WESTERN OIL & GAS COMPANY

FRITZLER #17-23-18, #6-6-17,
#17-32-12, #43-17 & #17-42-11
LOCATED IN WELD COUNTY, COLORADO
SECTION 17, T6N, R66W, 6th P.M.



PHOTO: VIEW OF LOCATION STAKES

CAMERA ANGLE: SOUTHERLY



PHOTO: VIEW OF LOCATION STAKES

CAMERA ANGLE: WESTERLY



Uintah Engineering & Land Surveying
85 South 200 East Vernal, Utah 84078
(435) 789-1017 * FAX (435) 789-1813

LOCATION PHOTOS

04 27 12
MONTH DAY YEAR

TAKEN BY: D.N. DRAWN BY: J.L.H. REV: 05-18-12 B.D.H.

PHOTO
P3