

## The Road to Excellence Starts with Safety

<b>Sold To #:</b> 304535		<b>Ship To #:</b> 2324814		<b>Quote #:</b>		<b>Sales Order #:</b> 9341554	
<b>Customer:</b> PDC ENERGY EBUS				<b>Customer Rep:</b>			
<b>Well Name:</b> Johnson		<b>Well #:</b> 23-4		<b>API/UWI #:</b> 05-123-21309			
<b>Field:</b> Wattenberg		<b>City (SAP):</b> LUCERNE		<b>County/Parish:</b> Weld		<b>State:</b> Colorado	
<b>Job Purpose:</b> Recement Service				<b>Job Type:</b> Recement Service			
<b>Well Type:</b> Development Well				<b>Srv Supervisor:</b> SALINAS, JOSE			
<b>Sales Person:</b> SCOTT, KYLE				<b>MBU ID Emp #:</b> 100319			

Job Personnel							
HES Emp Name	Exp Hrs	Emp #	HES Emp Name	Exp Hrs	Emp #	HES Emp Name	Exp Hrs
CARPENTER, JACOB P	4	499500	OTERI, VAUGHN Steeves	4	443828	ROMERO, JOSEPH M	4
SALINAS, JOSE R	4	100319					

Equipment							
HES Unit #	Distance-1 way	HES Unit #	Distance-1 way	HES Unit #	Distance-1 way	HES Unit #	Distance-1 way
10679720C	40 mile	10866493C	40 mile	10982754C	40 mile	11562570C	40 mile
11605597	40 mile	11667703C	40 mile				

Job Hours					
Date	On Location Hours	Operating Hours	Date	On Location Hours	Operating Hours
3-7-12	4	2			
<b>TOTAL</b>			Total is the sum of each column separately		

Job				Job Times			
Formation Name	Formation Depth (MD)	Top	Bottom	Date	Time	Time	Zone
<b>Form Type</b>				BHST			
<b>Job depth MD</b>	3490. ft			<b>Job Depth TVD</b>	3490. ft		
<b>Water Depth</b>				<b>Wk Ht Above Floor</b>	3. ft		
<b>Perforation Depth (MD)</b>	From		To				

Well Data											
Description	New / Used	Max pressure psig	Size in	ID in	Weight lbm/ft	Thread	Grade	Top MD ft	Bottom MD ft	Top TVD ft	Bottom TVD ft
Open Hole				12.				415.	3490.		
Production Casing	Used		4.5	4.052	10.5		J-55		8450.		
Surface Casing	Used		8.625	8.097	24.		J-55		415.		
TUBING	Unknown		1.25	.671	3.02				3490.		

Tools and Accessories													
Type	Size	Qty	Make	Depth	Type	Size	Qty	Make	Depth	Type	Size	Qty	Make
Guide Shoe					Packer					Top Plug			
Float Shoe					Bridge Plug					Bottom Plug			
Float Collar					Retainer					SSR plug set			
Insert Float										Plug Container			
Stage Tool										Centralizers			

Miscellaneous Materials											
Gelling Agt	Conc	Conc	Surfactant	Inhibitor	Conc	Conc	Acid Type	Sand Type	Qty	Conc	%
Treatment Fld											

Stage/Plug #: 1				Fluid Data							
Fluid #	Stage Type	Fluid Name	Qty	Qty uom	Mixing Density lbm/gal	Yield ft <sup>3</sup> /sk	Mix Fluid Gal/sk	Rate bbl/min	Total Mix Fluid Gal/sk		
1	ClayWeb Water Spacer	WATER SPACER	10.00	bbl	8.33	.0	.0	2.0			
2	MUD FLUSH III	MUD FLUSH III - SBM (528788)	12.00	bbl	8.4	.0	.0	2.0			
3	ClayWeb Water Spacer	WATER SPACER	10.00	bbl	8.33	.0	.0	2.0			
		59.525 gal/Mgal									
4	FillCem 11.8#	EXTENDACEM (TM) SYSTEM (452981)	470.0	sacks	11.8	2.06	11.25	2.0	11.25		
		11.25 Gal	FRESH WATER								
Calculated Values			Pressures		Volumes						
Displacement		Shut In: Instant		Lost Returns		Cement Slurry		Pad			
Top Of Cement		5 Min		Cement Returns		Actual Displacement		Treatment			
Frac Gradient		15 Min		Spacers		Load and Breakdown		Total Job			
Rates											
Circulating		Mixing		Displacement		Avg. Job					
Cement Left In Pipe	Amount:	0 ft	Reason	Shoe Joint							
Frac Ring # 1 @	ID	Frac ring # 2 @	ID	Frac Ring # 3 @	ID	Frac Ring # 4 @	ID				
The Information Stated Herein Is Correct				Customer Representative Signature							

*The Road to Excellence Starts with Safety*

Sold To #: 304535	Ship To #: 2324814	Quote #:	Sales Order #: 9341554
Customer: PDC ENERGY EBUS		Customer Rep:	
Well Name: Johnson	Well #: 23-4	API/UWI #: 05-123-21309	
Field: Wattenberg	City (SAP): LUCERNE	County/Parish: Weld	State: Colorado
Legal Description:			
Lat: N 0 deg. OR N 0 deg. 0 min. 0 secs.		Long: E 0 deg. OR E 0 deg. 0 min. 0 secs.	
Contractor:		Rig/Platform Name/Num:	
Job Purpose: Recement Service		Ticket Amount:	
Well Type: Development Well	Job Type: Recement Service		
Sales Person: SCOTT, KYLE	Srv Supervisor: SALINAS, JOSE	MBU ID Emp #: 100319	

Activity Description	Date/Time	Cht #	Rate bbl/min	Volume bbl	Pressure psig	Comments
Call Out	03/07/2012 05:00					
Depart Yard Safety Meeting	03/07/2012 07:00					
Arrive at Location from Service Center	03/07/2012 08:45					
Pre-Rig Up Safety Meeting	03/07/2012 09:00					
Rig-Up Equipment	03/07/2012 09:05					
Pre-Job Safety Meeting	03/07/2012 09:45					
Start Job	03/07/2012 09:58					
Test Lines	03/07/2012 09:58	1	1		3000.0	TEST LINES WITH WATER
Pump Spacer 1	03/07/2012 10:00	1.8	10		1430.0	PUMP CLAYFIX WATER SPACER @ 8.33 PPG
Pump Spacer 2	03/07/2012 10:10	1.8	12		1650.0	PUMP MUD FLUSD SPACER @ 8.4 PPG
Pump Spacer 1	03/07/2012 10:13	1.8	10		1635.0	PUMP CLAYFIX WATER SPACER @ 8.3 PPG
Pump Lead Cement	03/07/2012 10:23	1.8	109		1620.0	PUMP CMT FILLCEM 297 SKS ( 108.9 BBL ) @ 11.8 PPG
Pump Displacement	03/07/2012 11:30	0	0		.0	SHUT DOWN / PULL 45 JOINTS
Pump Cement	03/07/2012 11:52	1.8	60		1629.0	PUMP CMT FILLCEM 173 SKS ( 60 BBLs ) @ 11.8 PPS
Pump Displacement	03/07/2012 12:31	1.8	1.5		1620.0	PUMP 1.5 BBLs DISPLACEMENT WITH WATER



## Cementing Job Log

Activity Description	Date/Time	Cht #	Rate bbl/min	Volume bbl		Pressure psig		Comments
				Stage	Total	Tubing	Casing	
Shutdown	03/07/2012 12:32							SHUT DOWN
Pre-Rig Down Safety Meeting	03/07/2012 12:35							
Rig-Down Equipment	03/07/2012 12:45							
Depart Location Safety Meeting	03/07/2012 13:15							
Depart Location for Service Center or Other Site	03/07/2012 13:30							

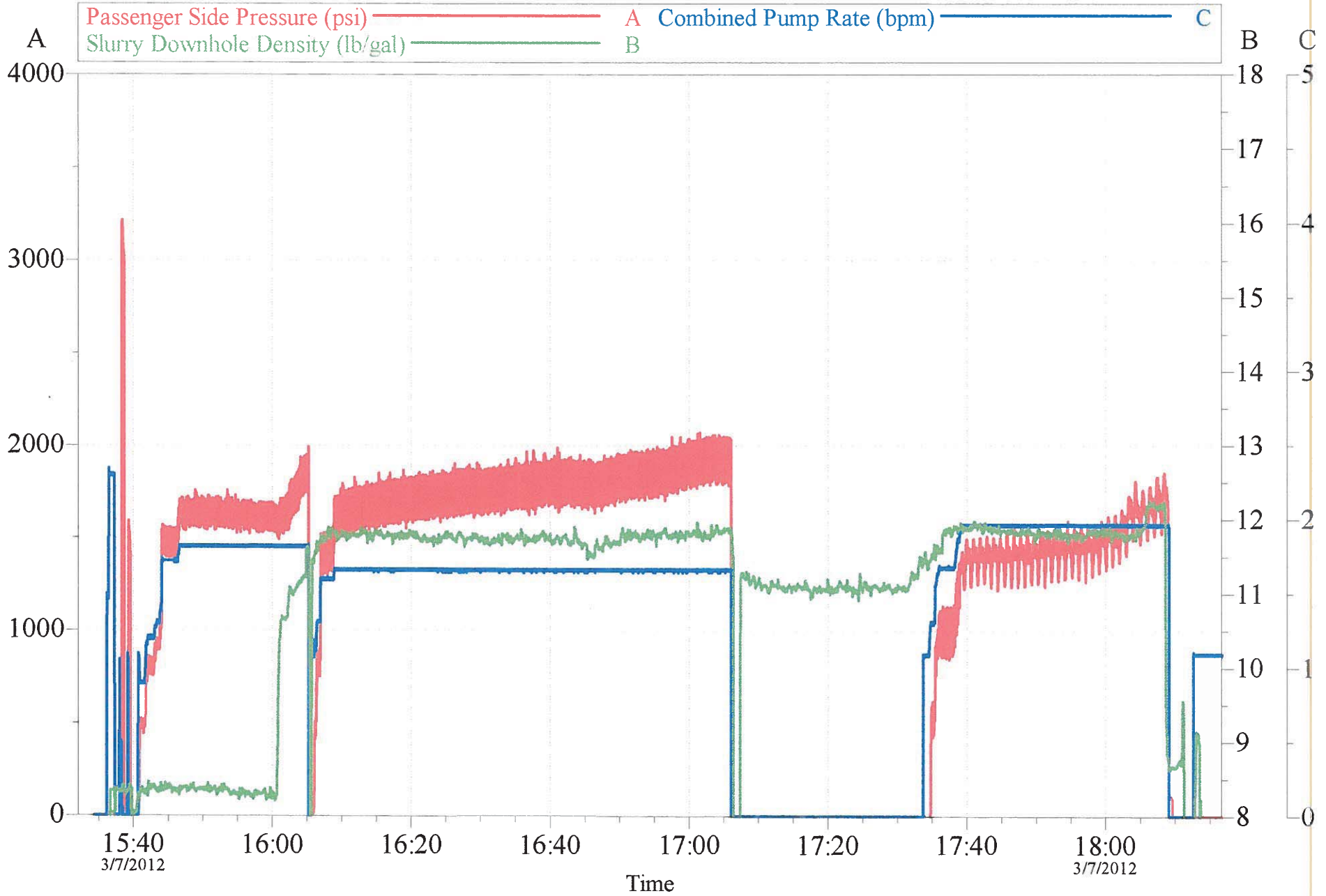
Sold To # : 304535  
SUMMIT Version: 7.3.0021

Ship To # :2324814  
Wednesday, March 07, 2012 01:13:00

Quote # :  
Wednesday, March 07, 2012 01:13:00

Sales Order # : 9341554

# PDC Annular Fill



Customer: Halliburton  
Well Description: RTD

Job Date: 07-Mar-2012  
UWI:

Sales Order #: 15:34:19

OptiCem v6.4.10  
07-Mar-12 13:27