

T10N, R58W, 6th P.M.

Target
Bottom Hole

WHITTING OIL & GAS CORP.

Stone
Lat: 40.846000°
Long: 103.842342°

S89°34'57"W - 2657.19' (Meas.)

2012 UELS Alum.
Cap, 0.4' High
Lat: 40.846053°
Long: 103.832739°

S89°34'53"W
2657.25' (Meas.)

2010 UELS Alum.
Cap, Flush w/Ground
Lat: 40.846106°
Long: 103.823136°

Well location, RAZOR #14-1143H (SURFACE LOCATION), located as shown in the SE 1/4 SE 1/4 of Section 14, T10N, R58W, 6th P.M., Weld County, Colorado.

BASIS OF ELEVATION

SPOT ELEVATION LOCATED AT THE NORTHEAST CORNER OF SECTION 15, T9N, R58W, 6th P.M. TAKEN FROM THE GATEHOOK SPRING, QUADRANGLE, COLORADO, WELD COUNTY, 7.5 MINUTE QUAD (TOPOGRAPHIC MAP) PUBLISHED BY THE UNITED STATES DEPARTMENT OF THE INTERIOR, GEOLOGICAL SURVEY. SAID ELEVATION IS MARKED AS BEING 4679 FEET.

BASIS OF BEARINGS

BASIS OF BEARINGS IS A G.P.S. OBSERVATION.

N00°18'58"W - 2642.32' (Meas.)

2012 UELS Alum.
Cap, 0.3' High
Lat: 40.838747°
Long: 103.842289°

NOTE:
SEE ADDENDUM TO LEGAL PLAT FOR
EXISTING IMPROVEMENTS WITHIN 400'
OF THE PROPOSED DISTURBANCE.

14

N00°28'52"W
6952.54'

N00°29'00"W - 2702.18' (Meas.)

UELS Alum.
Cap
Lat: 40.836689°
Long: 103.823056°

N00°19'01"W - 2642.26' (Meas.)

NOTE:
THE PROPOSED BOTTOM HOLE FOR THIS
WELL IS LOCATED IN THE NE 1/4 SE 1/4
OF SECTION 11, T10N, R58W, 6TH P.M. AT
1980' FSL 660' FEL. IT BEARS N00°28'52"W
6952.54' FROM THE PROPOSED WELL HEAD.

RAZOR #14-1143H
Elev. Ungraded Ground = 4939'

2012 UELS Alum. S89°59'11"E - 2666.23' (Meas.)
Cap, 0.5' Below Ground
Lat: 40.831497°
Long: 103.842233°

2012 UELS Alum.
Cap, 0.5' High
Lat: 40.831497°
Long: 103.832603°

S89°35'31"W
2663.79' (Meas.)

Stone
Lat: 40.831547°
Long: 103.822978°

LEGEND:

— = 90° SYMBOL

● = PROPOSED WELL HEAD.

▲ = SECTION CORNERS LOCATED.

PDOP = 1.0

NAD 83 (SURFACE LOCATION)

LATITUDE = 40°49'56.81" (40.832447)
LONGITUDE = 103°49'31.34" (103.823572)

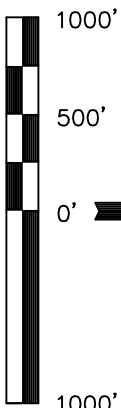
NAD 27 (SURFACE LOCATION)

LATITUDE = 40°49'56.86" (40.832461)
LONGITUDE = 103°49'29.53" (103.824869)

THIS IS TO CERTIFY THAT THE ABOVE PLAT WAS PREPARED FROM
FIELD NOTES OF ACTUAL SURVEYS MADE BY ME OR UNDER MY
SUPERVISION AND THAT THE SAME ARE TRUE AND CORRECT TO THE
BEST OF MY KNOWLEDGE AND BELIEF.

CERTIFICATE

REGISTERED LAND SURVEYOR
REGISTRATION NO. 17492
STATE OF COLORADO
05-31-12



S C A L E

UINTAH ENGINEERING & LAND SURVEYING
85 SOUTH 200 EAST - VERNAL, UTAH 84078
(435) 789-1017

SCALE 1" = 1000' DATE SURVEYED: 05-23-12 DATE DRAWN: 05-30-12

PARTY J.H. C.M. J.W. REFERENCES G.L.O. PLAT

WEATHER WARM FILE WHITTING OIL & GAS CORP.

T10N, R58W, 6th P.M.

2012 UELS Alum.
Cap, 0.3' High
Lat: 40.860544°
Long: 103.842372°

2012 UELS Alum.
Cap, 0.3' High
Lat: 40.860597°
Long: 103.832833°

2012 UELS Alum.
Cap, 0.3' High
Lat: 40.860647°
Long: 103.832292°

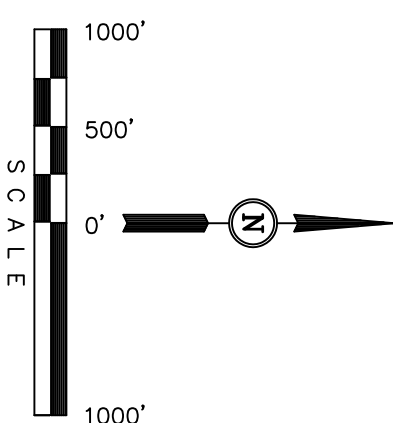
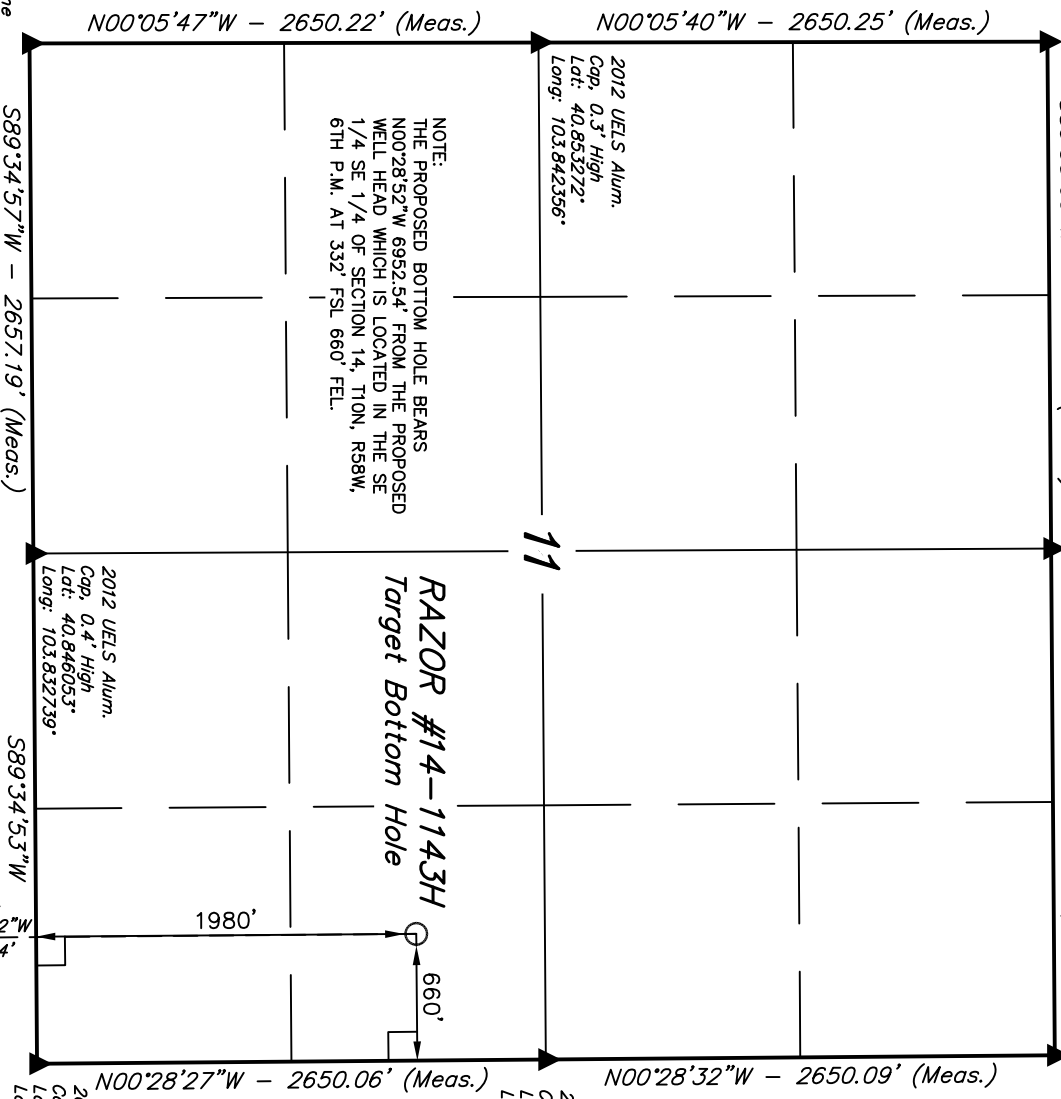
Well location, RAZOR #14-1143H (TARGET BOTTOM HOLE), located as shown in the NE 1/4 SE 1/4 of Section 11, T10N, R58W, 6th P.M., Weld County, Colorado.

BASIS OF ELEVATION

SPOT ELEVATION LOCATED AT THE NORTHEAST CORNER OF SECTION 15, T9N, R58W, 6th P.M. TAKEN FROM THE GATEHOOK SPRING, QUADRANGLE, COLORADO, WELD COUNTY, 7.5 MINUTE QUAD (TOPOGRAPHIC MAP) PUBLISHED BY THE UNITED STATES DEPARTMENT OF THE INTERIOR, GEOLOGICAL SURVEY. SAID ELEVATION IS MARKED AS BEING 4679 FEET.

BASIS OF BEARINGS

BASIS OF BEARINGS IS A G.P.S. OBSERVATION.



CERTIFICATE
THIS IS TO CERTIFY THAT THE ABOVE PLAT WAS PREPARED FROM FIELD NOTES OF ACTUAL SURVEYS MADE BY ME OR UNDER MY SUPERVISION AND THAT THE SAME ARE TRUE AND CORRECT TO THE BEST OF MY KNOWLEDGE AND BELIEF.

REGISTERED LAND SURVEYOR
REGISTRATION NO. 12492
STATE OF COLORADO
05-31-12

SURFACE LOCATION

- LEGEND:
- = 90° SYMBOL
 - = PROPOSED WELL HEAD.
 - ▲ = SECTION CORNERS LOCATED.

NAD 83 (TARGET BOTTOM HOLE)	
LATITUDE =	40°51'05.49" (40.851525)
LONGITUDE =	103°49'32.09" (103.825581)
NAD 27 (TARGET BOTTOM HOLE)	
LATITUDE =	40°51'05.54" (40.851539)
LONGITUDE =	103°49'30.28" (103.825078)

UTIAH ENGINEERING & LAND SURVEYING			
85 SOUTH 200 EAST - VERNAL, UTAH 84078			
(435) 789-1017			
SCALE	1" = 1000'	DATE SURVEYED:	05-23-12
PARTY	J.H. C.M. J.W.	REFERENCES	G.L.O. PLAT
WEATHER	WARM	FILE	WHITTING OIL & GAS CORP.