

BONANZA CREEK ENERGY OPERATING

Well Name: **PRONGHORN 14-11-7HZ**

Surface Location: PRONHORN 14-11-07HZ PAD 7-5N-61W

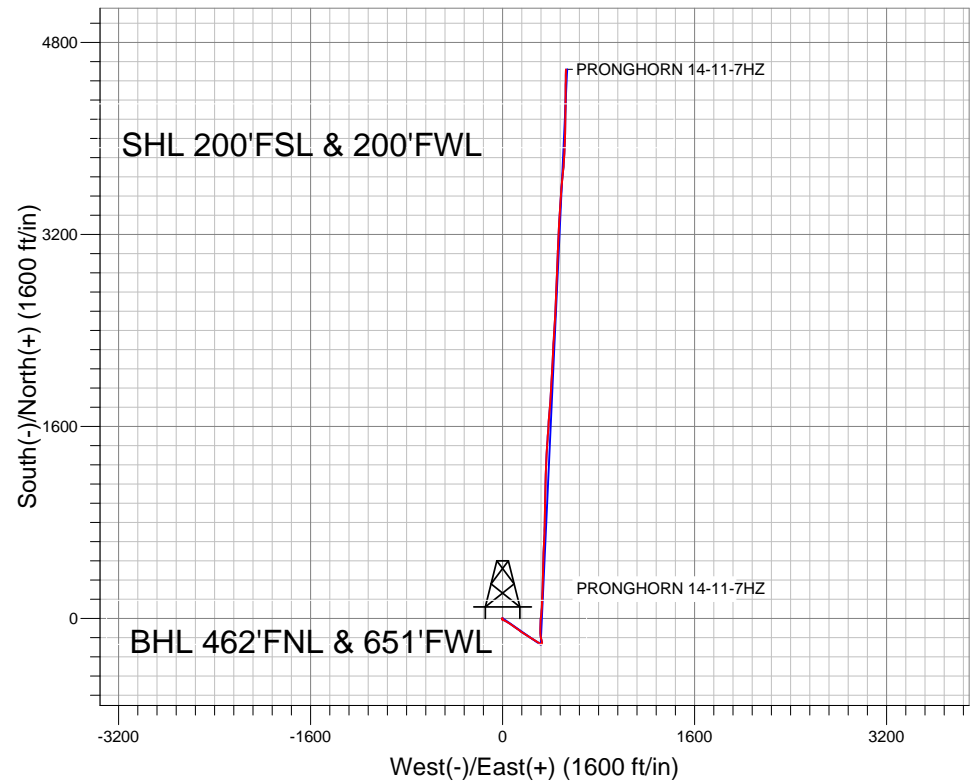
North American Datum 1983 , US State Plane 1983 , Colorado Northern Zone

Ground Elevation: 4605.0

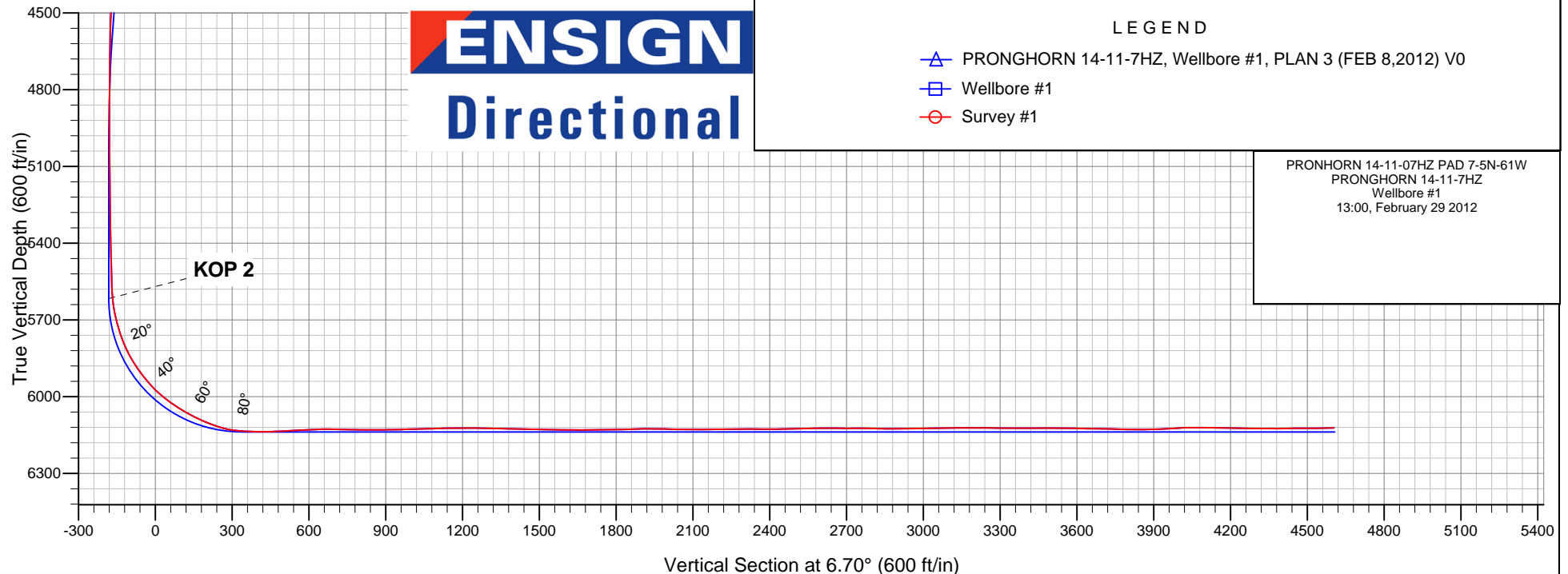
+N/-S	+E/-W	Northing	Easting	Latitude	Longitude	Slot
0.0	0.0	1394263.33	3344966.97	40.409040	-104.261180	
ENSIGN RIG 14 KB 15' RKB @ 4620.0ft (ENSIGN RIG 14 KB 15')						

FINAL SURVEY

Projected Bottom Hole Location
10712' MD 6122' TVD 4574'N & 528'E of
SHL
91.5 degree Incl @ 1.6 degree AZM



ENSIGN
Directional





Directional

BONANZA CREEK ENERGY OPERATING

SEC.7-T5N-R61W

PRONHORN 14-11-07HZ PAD 7-5N-61W

PRONGHORN 14-11-7HZ

Wellbore #1

Survey: Survey #1

Standard Survey Report

29 February, 2012

Company:	BONANZA CREEK ENERGY OPERATING	Local Co-ordinate Reference:	Well PRONGHORN 14-11-7HZ
Project:	SEC.7-T5N-R61W	TVD Reference:	RKB @ 4620.0ft (ENSIGN RIG 14 KB 15')
Site:	PRONGHORN 14-11-07HZ PAD 7-5N-61W	MD Reference:	RKB @ 4620.0ft (ENSIGN RIG 14 KB 15')
Well:	PRONGHORN 14-11-7HZ	North Reference:	True
Wellbore:	Wellbore #1	Survey Calculation Method:	Minimum Curvature
Design:	Wellbore #1	Database:	Landmark

Survey

Measured Depth (ft)	Inclination (°)	Azimuth (°)	Vertical Depth (ft)	+N-S (ft)	+E-W (ft)	Vertical Section (ft)	Dogleg Rate (°/100ft)	Build Rate (°/100ft)	Turn Rate (°/100ft)
1,597.0	1.10	100.30	1,596.8	-11.6	-2.9	-11.8	0.55	-0.13	-25.91
1,751.0	0.50	68.30	1,750.8	-11.6	-0.8	-11.6	0.47	-0.39	-20.78
1,904.0	0.40	81.70	1,903.8	-11.3	0.3	-11.1	0.09	-0.07	8.76
1,996.0	1.00	122.60	1,995.8	-11.6	1.3	-11.4	0.81	0.65	44.46
2,087.0	2.10	118.40	2,086.8	-12.9	3.5	-12.4	1.21	1.21	-4.62
2,179.0	3.90	118.70	2,178.6	-15.2	7.7	-14.2	1.96	1.96	0.33
2,271.0	5.10	115.30	2,270.3	-18.4	14.1	-16.6	1.34	1.30	-3.70
2,363.0	6.10	116.10	2,361.9	-22.3	22.2	-19.6	1.09	1.09	0.87
2,455.0	7.20	119.40	2,453.3	-27.3	31.6	-23.4	1.27	1.20	3.59
2,547.0	8.30	120.30	2,544.4	-33.5	42.4	-28.3	1.20	1.20	0.98
2,640.0	9.10	122.60	2,636.4	-40.8	54.4	-34.2	0.94	0.86	2.47
2,731.0	9.50	123.90	2,726.2	-48.9	66.7	-40.8	0.50	0.44	1.43
2,824.0	9.10	126.00	2,818.0	-57.5	79.0	-47.9	0.56	-0.43	2.26
2,918.0	8.70	123.50	2,910.8	-65.8	90.9	-54.7	0.59	-0.43	-2.66
3,011.0	9.10	128.10	3,002.7	-74.2	102.6	-61.7	0.88	0.43	4.95
3,104.0	8.70	124.60	3,094.6	-82.7	114.2	-68.9	0.72	-0.43	-3.76
3,198.0	9.60	127.70	3,187.4	-91.6	126.2	-76.2	1.09	0.96	3.30
3,293.0	11.20	125.00	3,280.8	-101.7	140.1	-84.7	1.76	1.68	-2.84
3,386.0	12.80	126.60	3,371.8	-113.0	155.7	-94.1	1.76	1.72	1.72
3,479.0	13.20	124.70	3,462.4	-125.2	172.7	-104.2	0.63	0.43	-2.04
3,573.0	12.30	120.40	3,554.1	-136.4	190.2	-113.3	1.39	-0.96	-4.57
3,667.0	11.10	120.20	3,646.1	-146.0	206.6	-120.9	1.28	-1.28	-0.21
3,761.0	10.30	120.30	3,738.5	-154.8	221.7	-127.9	0.85	-0.85	0.11
3,855.0	10.20	119.40	3,831.0	-163.1	236.2	-134.5	0.20	-0.11	-0.96
3,949.0	8.70	125.20	3,923.7	-171.3	249.3	-141.1	1.89	-1.60	6.17
4,042.0	9.40	127.50	4,015.6	-180.0	261.1	-148.3	0.85	0.75	2.47
4,136.0	9.00	126.00	4,108.4	-189.0	273.1	-155.8	0.50	-0.43	-1.60
4,232.0	8.10	119.60	4,203.3	-196.7	285.1	-162.2	1.36	-0.94	-6.67
4,325.0	6.50	119.20	4,295.5	-202.5	295.3	-166.7	1.72	-1.72	-0.43
4,419.0	4.80	120.80	4,389.1	-207.2	303.4	-170.4	1.82	-1.81	1.70
4,511.0	4.20	118.60	4,480.8	-210.7	309.6	-173.2	0.68	-0.65	-2.39
4,605.0	2.50	124.20	4,574.6	-213.5	314.4	-175.4	1.84	-1.81	5.96
4,699.0	1.10	142.90	4,668.6	-215.4	316.6	-177.0	1.60	-1.49	19.89
4,793.0	1.00	125.00	4,762.6	-216.6	317.8	-178.1	0.36	-0.11	-19.04
4,887.0	0.30	135.90	4,856.6	-217.3	318.7	-178.6	0.75	-0.74	11.60
5,074.0	0.60	62.80	5,043.6	-217.2	319.9	-178.4	0.31	0.16	-39.09
5,168.0	0.80	58.70	5,137.5	-216.6	320.9	-177.7	0.22	0.21	-4.36
5,262.0	0.80	46.60	5,231.5	-215.8	321.9	-176.8	0.18	0.00	-12.87
5,356.0	1.30	41.40	5,325.5	-214.5	323.1	-175.4	0.54	0.53	-5.53
5,450.0	1.40	37.50	5,419.5	-212.8	324.5	-173.5	0.14	0.11	-4.15
5,494.0	1.70	37.20	5,463.5	-211.9	325.2	-172.5	0.68	0.68	-0.68
5,514.0	1.90	38.60	5,483.5	-211.4	325.6	-172.0	1.02	1.00	7.00
5,546.0	1.80	44.70	5,515.4	-210.6	326.3	-171.1	0.69	-0.31	19.06
5,577.0	1.80	45.60	5,546.4	-209.9	327.0	-170.4	0.09	0.00	2.90
5,608.0	2.50	23.50	5,577.4	-209.0	327.6	-169.3	3.46	2.26	-71.29
5,639.0	4.80	3.40	5,608.3	-207.1	327.9	-167.4	8.38	7.42	-64.84
5,671.0	8.10	353.80	5,640.1	-203.5	327.8	-163.9	10.81	10.31	-30.00
5,702.0	11.50	349.40	5,670.7	-198.3	327.0	-158.8	11.22	10.97	-14.19
5,733.0	14.80	347.30	5,700.9	-191.4	325.5	-152.1	10.75	10.65	-6.77
5,765.0	17.40	346.60	5,731.6	-182.7	323.5	-143.7	8.15	8.13	-2.19
5,796.0	20.00	345.70	5,761.0	-173.1	321.1	-134.4	8.44	8.39	-2.90
5,827.0	23.00	347.80	5,789.8	-162.0	318.5	-123.8	9.99	9.68	6.77
5,859.0	26.60	350.80	5,818.9	-148.8	316.1	-110.9	11.91	11.25	9.38
5,890.0	30.20	354.60	5,846.1	-134.2	314.2	-96.6	12.99	11.61	12.26

Company:	BONANZA CREEK ENERGY OPERATING	Local Co-ordinate Reference:	Well PRONGHORN 14-11-7HZ
Project:	SEC.7-T5N-R61W	TVD Reference:	RKB @ 4620.0ft (ENSIGN RIG 14 KB 15')
Site:	PRONGHORN 14-11-07HZ PAD 7-5N-61W	MD Reference:	RKB @ 4620.0ft (ENSIGN RIG 14 KB 15')
Well:	PRONGHORN 14-11-7HZ	North Reference:	True
Wellbore:	Wellbore #1	Survey Calculation Method:	Minimum Curvature
Design:	Wellbore #1	Database:	Landmark

Survey									
Measured Depth (ft)	Inclination (°)	Azimuth (°)	Vertical Depth (ft)	+N/-S (ft)	+E/-W (ft)	Vertical Section (ft)	Dogleg Rate (°/100ft)	Build Rate (°/100ft)	Turn Rate (°/100ft)
5,921.0	32.70	358.50	5,872.6	-118.1	313.3	-80.7	10.39	8.06	12.58
5,953.0	35.70	359.20	5,899.0	-100.1	312.9	-62.9	9.46	9.38	2.19
5,984.0	38.50	0.40	5,923.8	-81.4	312.9	-44.4	9.33	9.03	3.87
6,015.0	41.40	2.60	5,947.5	-61.5	313.4	-24.5	10.40	9.35	7.10
6,047.0	44.90	3.10	5,970.9	-39.6	314.5	-2.7	10.99	10.94	1.56
6,078.0	49.10	4.70	5,992.0	-17.0	316.0	19.9	14.06	13.55	5.16
6,109.0	52.70	6.40	6,011.6	6.9	318.4	44.0	12.37	11.61	5.48
6,141.0	55.90	6.10	6,030.2	32.7	321.2	70.0	10.03	10.00	-0.94
6,172.0	58.50	4.80	6,047.0	58.7	323.7	96.0	9.10	8.39	-4.19
6,204.0	60.10	4.30	6,063.4	86.1	325.9	123.5	5.18	5.00	-1.56
6,235.0	63.20	3.80	6,078.1	113.3	327.8	150.8	10.10	10.00	-1.61
6,266.0	65.70	3.10	6,091.4	141.2	329.5	178.7	8.32	8.06	-2.26
6,298.0	68.00	1.90	6,104.0	170.6	330.7	208.0	7.97	7.19	-3.75
6,329.0	71.10	1.00	6,114.8	199.6	331.5	236.9	10.36	10.00	-2.90
6,360.0	75.70	1.10	6,123.7	229.3	332.0	266.5	14.84	14.84	0.32
6,392.0	80.30	1.00	6,130.4	260.6	332.6	297.6	14.38	14.38	-0.31
6,417.0	84.40	1.00	6,133.7	285.4	333.0	322.3	16.40	16.40	0.00
6,468.0	88.80	0.90	6,136.7	336.3	333.9	372.9	8.63	8.63	-0.20
6,499.0	88.90	1.10	6,137.3	367.3	334.4	403.8	0.72	0.32	0.65
6,530.0	91.10	1.80	6,137.3	398.3	335.2	434.6	7.45	7.10	2.26
6,560.0	92.50	1.80	6,136.4	428.2	336.1	464.5	4.67	4.67	0.00
6,591.0	92.50	2.20	6,135.0	459.2	337.2	495.4	1.29	0.00	1.29
6,622.0	93.10	2.50	6,133.5	490.1	338.5	526.3	2.16	1.94	0.97
6,653.0	93.10	2.70	6,131.8	521.0	339.9	557.1	0.64	0.00	0.65
6,684.0	92.90	2.70	6,130.2	552.0	341.3	588.0	0.65	-0.65	0.00
6,715.0	92.80	3.60	6,128.7	582.9	343.0	618.9	2.92	-0.32	2.90
6,746.0	91.40	2.90	6,127.5	613.8	344.8	649.8	5.05	-4.52	-2.26
6,778.0	88.60	2.20	6,127.5	645.8	346.2	681.8	9.02	-8.75	-2.19
6,809.0	88.70	2.00	6,128.3	676.7	347.4	712.6	0.72	0.32	-0.65
6,840.0	89.30	1.60	6,128.8	707.7	348.3	743.5	2.33	1.94	-1.29
6,871.0	89.00	1.30	6,129.3	738.7	349.1	774.4	1.37	-0.97	-0.97
6,902.0	89.40	1.10	6,129.7	769.7	349.8	805.2	1.44	1.29	-0.65
6,933.0	90.10	0.90	6,129.8	800.7	350.3	836.1	2.35	2.26	-0.65
6,964.0	90.40	1.10	6,129.7	831.7	350.9	866.9	1.16	0.97	0.65
6,994.0	89.90	1.50	6,129.6	861.7	351.5	896.8	2.13	-1.67	1.33
7,025.0	91.00	1.10	6,129.4	892.7	352.2	927.7	3.78	3.55	-1.29
7,057.0	91.90	0.80	6,128.6	924.7	352.8	959.5	2.96	2.81	-0.94
7,088.0	91.60	1.10	6,127.6	955.6	353.3	990.3	1.37	-0.97	0.97
7,120.0	91.80	0.80	6,126.7	987.6	353.8	1,022.1	1.13	0.63	-0.94
7,151.0	91.90	0.80	6,125.7	1,018.6	354.2	1,053.0	0.32	0.32	0.00
7,182.0	91.10	1.10	6,124.9	1,049.6	354.8	1,083.8	2.76	-2.58	0.97
7,214.0	90.80	1.50	6,124.3	1,081.6	355.5	1,115.7	1.56	-0.94	1.25
7,245.0	91.60	1.10	6,123.7	1,112.6	356.2	1,146.5	2.89	2.58	-1.29
7,276.0	90.90	1.60	6,123.0	1,143.5	356.9	1,177.4	2.77	-2.26	1.61
7,308.0	90.40	2.00	6,122.6	1,175.5	357.9	1,209.3	2.00	-1.56	1.25
7,339.0	89.70	1.80	6,122.6	1,206.5	359.0	1,240.1	2.35	-2.26	-0.65
7,370.0	89.00	1.80	6,123.0	1,237.5	359.9	1,271.0	2.26	-2.26	0.00
7,401.0	88.50	2.20	6,123.6	1,268.5	361.0	1,301.9	2.07	-1.61	1.29
7,432.0	88.60	2.70	6,124.4	1,299.4	362.3	1,332.8	1.64	0.32	1.61
7,463.0	88.50	2.90	6,125.2	1,330.4	363.8	1,363.7	0.72	-0.32	0.65
7,494.0	88.50	3.40	6,126.0	1,361.3	365.5	1,394.7	1.61	0.00	1.61
7,525.0	89.10	3.60	6,126.7	1,392.3	367.4	1,425.6	2.04	1.94	0.65
7,557.0	88.90	3.40	6,127.2	1,424.2	369.4	1,457.6	0.88	-0.63	-0.63
7,588.0	88.50	3.90	6,127.9	1,455.1	371.4	1,488.5	2.07	-1.29	1.61

Company:	BONANZA CREEK ENERGY OPERATING	Local Co-ordinate Reference:	Well PRONGHORN 14-11-7HZ
Project:	SEC.7-T5N-R61W	TVD Reference:	RKB @ 4620.0ft (ENSIGN RIG 14 KB 15')
Site:	PRONGHORN 14-11-07HZ PAD 7-5N-61W	MD Reference:	RKB @ 4620.0ft (ENSIGN RIG 14 KB 15')
Well:	PRONGHORN 14-11-7HZ	North Reference:	True
Wellbore:	Wellbore #1	Survey Calculation Method:	Minimum Curvature
Design:	Wellbore #1	Database:	Landmark

Survey

Measured Depth (ft)	Inclination (°)	Azimuth (°)	Vertical Depth (ft)	+N/-S (ft)	+E/-W (ft)	Vertical Section (ft)	Dogleg Rate (°/100ft)	Build Rate (°/100ft)	Turn Rate (°/100ft)
7,619.0	88.60	4.30	6,128.7	1,486.0	373.6	1,519.5	1.33	0.32	1.29
7,651.0	88.90	4.30	6,129.4	1,517.9	376.0	1,551.4	0.94	0.94	0.00
7,682.0	88.90	3.80	6,130.0	1,548.9	378.2	1,582.4	1.61	0.00	-1.61
7,713.0	89.30	3.60	6,130.5	1,579.8	380.2	1,613.3	1.44	1.29	-0.65
7,744.0	89.80	3.80	6,130.7	1,610.7	382.2	1,644.3	1.74	1.61	0.65
7,775.0	90.90	3.90	6,130.6	1,641.6	384.3	1,675.3	3.56	3.55	0.32
7,807.0	90.40	3.80	6,130.2	1,673.6	386.4	1,707.2	1.59	-1.56	-0.31
7,838.0	90.40	4.50	6,130.0	1,704.5	388.6	1,738.2	2.26	0.00	2.26
7,869.0	90.80	4.30	6,129.7	1,735.4	391.0	1,769.2	1.44	1.29	-0.65
7,900.0	90.90	4.30	6,129.2	1,766.3	393.3	1,800.1	0.32	0.32	0.00
7,931.0	92.30	4.50	6,128.3	1,797.2	395.7	1,831.1	4.56	4.52	0.65
7,961.0	92.20	4.10	6,127.2	1,827.1	398.0	1,861.0	1.37	-0.33	-1.33
7,993.0	91.20	4.30	6,126.2	1,859.0	400.3	1,893.0	3.19	-3.13	0.63
8,024.0	89.80	3.80	6,125.9	1,889.9	402.5	1,924.0	4.80	-4.52	-1.61
8,055.0	89.70	3.90	6,126.1	1,920.8	404.6	1,954.9	0.46	-0.32	0.32
8,086.0	88.50	3.90	6,126.6	1,951.8	406.7	1,985.9	3.87	-3.87	0.00
8,116.0	88.70	3.20	6,127.3	1,981.7	408.5	2,015.8	2.43	0.67	-2.33
8,148.0	89.30	3.40	6,127.8	2,013.6	410.4	2,047.8	1.98	1.88	0.63
8,179.0	90.00	2.90	6,128.0	2,044.6	412.1	2,078.7	2.77	2.26	-1.61
8,210.0	89.50	2.30	6,128.2	2,075.6	413.5	2,109.6	2.52	-1.61	-1.94
8,241.0	89.60	1.80	6,128.4	2,106.5	414.6	2,140.5	1.64	0.32	-1.61
8,273.0	90.40	2.00	6,128.4	2,138.5	415.7	2,172.4	2.58	2.50	0.63
8,304.0	91.20	1.60	6,128.0	2,169.5	416.6	2,203.3	2.89	2.58	-1.29
8,335.0	91.30	2.50	6,127.3	2,200.5	417.8	2,234.2	2.92	0.32	2.90
8,366.0	90.70	3.10	6,126.8	2,231.4	419.3	2,265.1	2.74	-1.94	1.94
8,398.0	90.00	3.80	6,126.6	2,263.4	421.2	2,297.1	3.09	-2.19	2.19
8,429.0	88.80	3.90	6,126.9	2,294.3	423.3	2,328.0	3.88	-3.87	0.32
8,460.0	89.00	3.80	6,127.5	2,325.2	425.4	2,359.0	0.72	0.65	-0.32
8,491.0	90.00	4.10	6,127.8	2,356.2	427.5	2,389.9	3.37	3.23	0.97
8,523.0	90.30	3.60	6,127.7	2,388.1	429.6	2,421.9	1.82	0.94	-1.56
8,554.0	90.60	3.60	6,127.4	2,419.0	431.6	2,452.8	0.97	0.97	0.00
8,585.0	92.00	3.80	6,126.7	2,449.9	433.6	2,483.8	4.56	4.52	0.65
8,617.0	92.90	3.80	6,125.4	2,481.8	435.7	2,515.7	2.81	2.81	0.00
8,648.0	91.80	2.90	6,124.1	2,512.8	437.5	2,546.6	4.58	-3.55	-2.90
8,679.0	90.40	2.50	6,123.5	2,543.7	439.0	2,577.6	4.70	-4.52	-1.29
8,711.0	89.20	2.70	6,123.6	2,575.7	440.4	2,609.5	3.80	-3.75	0.63
8,742.0	89.10	2.30	6,124.1	2,606.7	441.8	2,640.4	1.33	-0.32	-1.29
8,773.0	89.60	2.20	6,124.4	2,637.6	443.0	2,671.3	1.64	1.61	-0.32
8,805.0	91.10	2.00	6,124.2	2,669.6	444.2	2,703.2	4.73	4.69	-0.63
8,836.0	90.20	2.20	6,123.9	2,700.6	445.3	2,734.1	2.97	-2.90	0.65
8,866.0	89.40	3.10	6,124.0	2,730.6	446.7	2,764.0	4.01	-2.67	3.00
8,897.0	89.00	2.30	6,124.4	2,761.5	448.1	2,794.9	2.89	-1.29	-2.58
8,929.0	88.70	2.00	6,125.0	2,793.5	449.3	2,826.8	1.33	-0.94	-0.94
8,960.0	89.90	2.50	6,125.4	2,824.5	450.6	2,857.7	4.19	3.87	1.61
8,991.0	90.20	2.20	6,125.4	2,855.4	451.8	2,888.6	1.37	0.97	-0.97
9,023.0	89.70	2.20	6,125.4	2,887.4	453.1	2,920.5	1.56	-1.56	0.00
9,054.0	90.80	2.30	6,125.3	2,918.4	454.3	2,951.5	3.56	3.55	0.32
9,085.0	91.50	2.20	6,124.7	2,949.4	455.5	2,982.4	2.28	2.26	-0.32
9,117.0	91.50	2.00	6,123.8	2,981.3	456.7	3,014.2	0.62	0.00	-0.63
9,148.0	91.70	2.00	6,123.0	3,012.3	457.8	3,045.1	0.65	0.65	0.00
9,179.0	89.90	1.60	6,122.5	3,043.3	458.7	3,076.0	5.95	-5.81	-1.29
9,211.0	89.70	3.10	6,122.6	3,075.2	460.0	3,107.9	4.73	-0.63	4.69
9,242.0	90.40	3.60	6,122.6	3,106.2	461.9	3,138.9	2.77	2.26	1.61
9,273.0	89.60	3.10	6,122.6	3,137.1	463.7	3,169.8	3.04	-2.58	-1.61

Company:	BONANZA CREEK ENERGY OPERATING	Local Co-ordinate Reference:	Well PRONGHORN 14-11-7HZ
Project:	SEC.7-T5N-R61W	TVD Reference:	RKB @ 4620.0ft (ENSIGN RIG 14 KB 15')
Site:	PRONGHORN 14-11-07HZ PAD 7-5N-61W	MD Reference:	RKB @ 4620.0ft (ENSIGN RIG 14 KB 15')
Well:	PRONGHORN 14-11-7HZ	North Reference:	True
Wellbore:	Wellbore #1	Survey Calculation Method:	Minimum Curvature
Design:	Wellbore #1	Database:	Landmark

Survey										
Measured Depth (ft)	Inclination (°)	Azimuth (°)	Vertical Depth (ft)	+N/-S (ft)	+E/-W (ft)	Vertical Section (ft)	Dogleg Rate (°/100ft)	Build Rate (°/100ft)	Turn Rate (°/100ft)	
9,304.0	90.50	3.40	6,122.6	3,168.1	465.4	3,200.7	3.06	2.90	0.97	
9,335.0	91.00	3.20	6,122.2	3,199.0	467.2	3,231.7	1.74	1.61	-0.65	
9,367.0	89.30	1.80	6,122.1	3,231.0	468.6	3,263.6	6.88	-5.31	-4.38	
9,398.0	88.90	2.20	6,122.6	3,262.0	469.7	3,294.5	1.82	-1.29	1.29	
9,429.0	89.00	1.80	6,123.2	3,293.0	470.8	3,325.4	1.33	0.32	-1.29	
9,460.0	89.30	2.50	6,123.6	3,323.9	471.9	3,356.3	2.46	0.97	2.26	
9,490.0	90.90	2.90	6,123.6	3,353.9	473.3	3,386.2	5.50	5.33	1.33	
9,522.0	90.70	2.90	6,123.1	3,385.8	475.0	3,418.1	0.63	-0.63	0.00	
9,553.0	89.90	3.10	6,123.0	3,416.8	476.6	3,449.1	2.66	-2.58	0.65	
9,584.0	89.50	4.30	6,123.1	3,447.7	478.6	3,480.0	4.08	-1.29	3.87	
9,616.0	90.00	4.60	6,123.3	3,479.6	481.1	3,512.0	1.82	1.56	0.94	
9,647.0	89.30	5.20	6,123.4	3,510.5	483.7	3,543.0	2.97	-2.26	1.94	
9,679.0	88.70	5.50	6,124.0	3,542.4	486.7	3,575.0	2.10	-1.88	0.94	
9,710.0	89.30	5.20	6,124.5	3,573.2	489.6	3,606.0	2.16	1.94	-0.97	
9,741.0	89.00	5.50	6,125.0	3,604.1	492.5	3,636.9	1.37	-0.97	0.97	
9,772.0	89.70	5.30	6,125.4	3,635.0	495.4	3,667.9	2.35	2.26	-0.65	
9,804.0	88.80	5.50	6,125.8	3,666.8	498.4	3,699.9	2.88	-2.81	0.63	
9,835.0	88.70	5.20	6,126.5	3,697.7	501.3	3,730.9	1.02	-0.32	-0.97	
9,867.0	88.20	4.50	6,127.3	3,729.6	504.0	3,762.9	2.69	-1.56	-2.19	
9,898.0	88.50	3.90	6,128.2	3,760.5	506.3	3,793.8	2.16	0.97	-1.94	
9,929.0	89.30	3.60	6,128.8	3,791.4	508.3	3,824.8	2.76	2.58	-0.97	
9,961.0	90.50	3.60	6,128.9	3,823.3	510.3	3,856.7	3.75	3.75	0.00	
9,992.0	92.10	3.80	6,128.2	3,854.2	512.3	3,887.7	5.20	5.16	0.65	
10,023.0	92.20	3.20	6,127.0	3,885.2	514.2	3,918.6	1.96	0.32	-1.94	
10,055.0	92.00	2.00	6,125.8	3,917.1	515.6	3,950.5	3.80	-0.63	-3.75	
10,086.0	94.30	2.50	6,124.1	3,948.0	516.9	3,981.4	7.59	7.42	1.61	
10,117.0	92.70	2.70	6,122.2	3,978.9	518.3	4,012.2	5.20	-5.16	0.65	
10,149.0	90.70	1.80	6,121.3	4,010.9	519.5	4,044.1	6.85	-6.25	-2.81	
10,180.0	90.40	1.60	6,121.0	4,041.9	520.4	4,075.0	1.16	-0.97	-0.65	
10,211.0	89.40	1.30	6,121.0	4,072.9	521.2	4,105.9	3.37	-3.23	-0.97	
10,243.0	88.10	0.90	6,121.7	4,104.9	521.8	4,137.7	4.25	-4.06	-1.25	
10,274.0	88.30	0.80	6,122.7	4,135.8	522.3	4,168.5	0.72	0.65	-0.32	
10,305.0	88.60	0.40	6,123.5	4,166.8	522.6	4,199.4	1.61	0.97	-1.29	
10,337.0	89.10	0.40	6,124.2	4,198.8	522.8	4,231.2	1.56	1.56	0.00	
10,368.0	89.30	0.10	6,124.6	4,229.8	523.0	4,262.0	1.16	0.65	-0.97	
10,400.0	89.80	0.10	6,124.9	4,261.8	523.0	4,293.7	1.56	1.56	0.00	
10,431.0	90.40	359.70	6,124.8	4,292.8	523.0	4,324.5	2.33	1.94	-1.29	
10,462.0	90.60	0.40	6,124.5	4,323.8	523.0	4,355.3	2.35	0.65	2.26	
10,494.0	90.50	0.60	6,124.2	4,355.8	523.3	4,387.1	0.70	-0.31	0.63	
10,525.0	89.80	0.80	6,124.2	4,386.8	523.7	4,418.0	2.35	-2.26	0.65	
10,556.0	90.10	1.50	6,124.2	4,417.8	524.3	4,448.8	2.46	0.97	2.26	
10,587.0	90.00	1.10	6,124.2	4,448.8	525.0	4,479.7	1.33	-0.32	-1.29	
10,618.0	90.40	1.50	6,124.1	4,479.8	525.7	4,510.5	1.82	1.29	1.29	
10,649.0	90.80	1.60	6,123.7	4,510.8	526.5	4,541.4	1.33	1.29	0.32	
10,665.0	91.20	1.60	6,123.4	4,526.8	527.0	4,557.3	2.50	2.50	0.00	
10,712.0	91.50	1.60	6,122.3	4,573.7	528.3	4,604.1	0.64	0.64	0.00	
BHL 460'FNL & 660'FWL										

Company:	BONANZA CREEK ENERGY OPERATING	Local Co-ordinate Reference:	Well PRONGHORN 14-11-7HZ
Project:	SEC.7-T5N-R61W	TVD Reference:	RKB @ 4620.0ft (ENSIGN RIG 14 KB 15')
Site:	PRONGHORN 14-11-07HZ PAD 7-5N-61W	MD Reference:	RKB @ 4620.0ft (ENSIGN RIG 14 KB 15')
Well:	PRONGHORN 14-11-7HZ	North Reference:	True
Wellbore:	Wellbore #1	Survey Calculation Method:	Minimum Curvature
Design:	Wellbore #1	Database:	Landmark

Checked By: _____	Approved By: _____	Date: _____
-------------------	--------------------	-------------