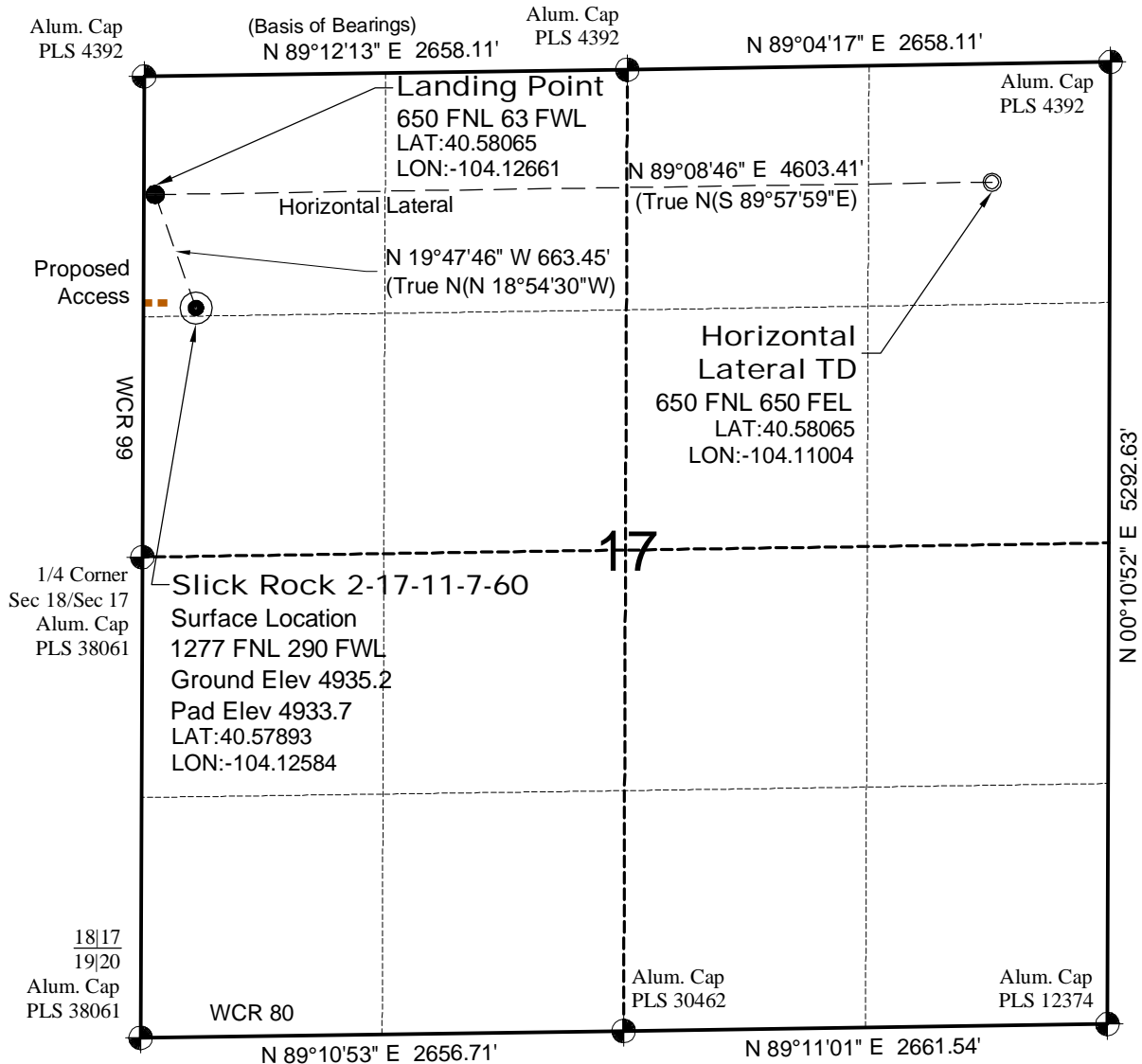


WELL LOCATION MAP

**SLICK ROCK
17-11-7-60 PAD**

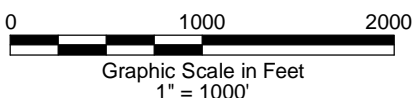


SURVEYOR'S STATEMENT

The undersigned hereby states that the well location shown hereon was staked on the ground based on existing monumentation and/or physical evidence found in the field and is correct to the best of my knowledge, information and belief.

NOTES

- 1.) Horizontal coordinates based on NGS control point "SNOW" and vertical datum based on NGS control point "G 209" with an elevation of 4955.32. NAVD 1988.
 - 2.) All directions, distances, and dimensions shown hereon are based on coordinates from the "Colorado coordinate system of 1983 north zone" (article 52 of title 38, C.R.S.).
 - 3.) All section line dimensions shown hereon are based on field measurements of existing monuments and/or physical evidence found in the field unless otherwise indicated. Refer to land survey plats deposited in Weld County.
 - 4.) Physical features shown hereon are for graphical representation only.
 - 5.) See Form 2A for visible improvements within 400' of wellhead.
 - 6.) Distances to nearest section lines are measured perpendicularly.
 - 7.) This is not a land survey nor land survey plat.
 - 8.) Date of Survey 7/19/12; Date of Drawing 7/23/12. REV 0
- PDOP Reading: 2.0 Instrument Operator: Seth Clayton



CARRIZO OIL & GAS, INC
SLICK ROCK 2-17-11-7-60

SL NW1/4 NW1/4 SEC. 17 T7N R60W
HL TD NE1/4 NE1/4 SEC. 17 T7N R60W
6th PM WELD COUNTY COLORADO