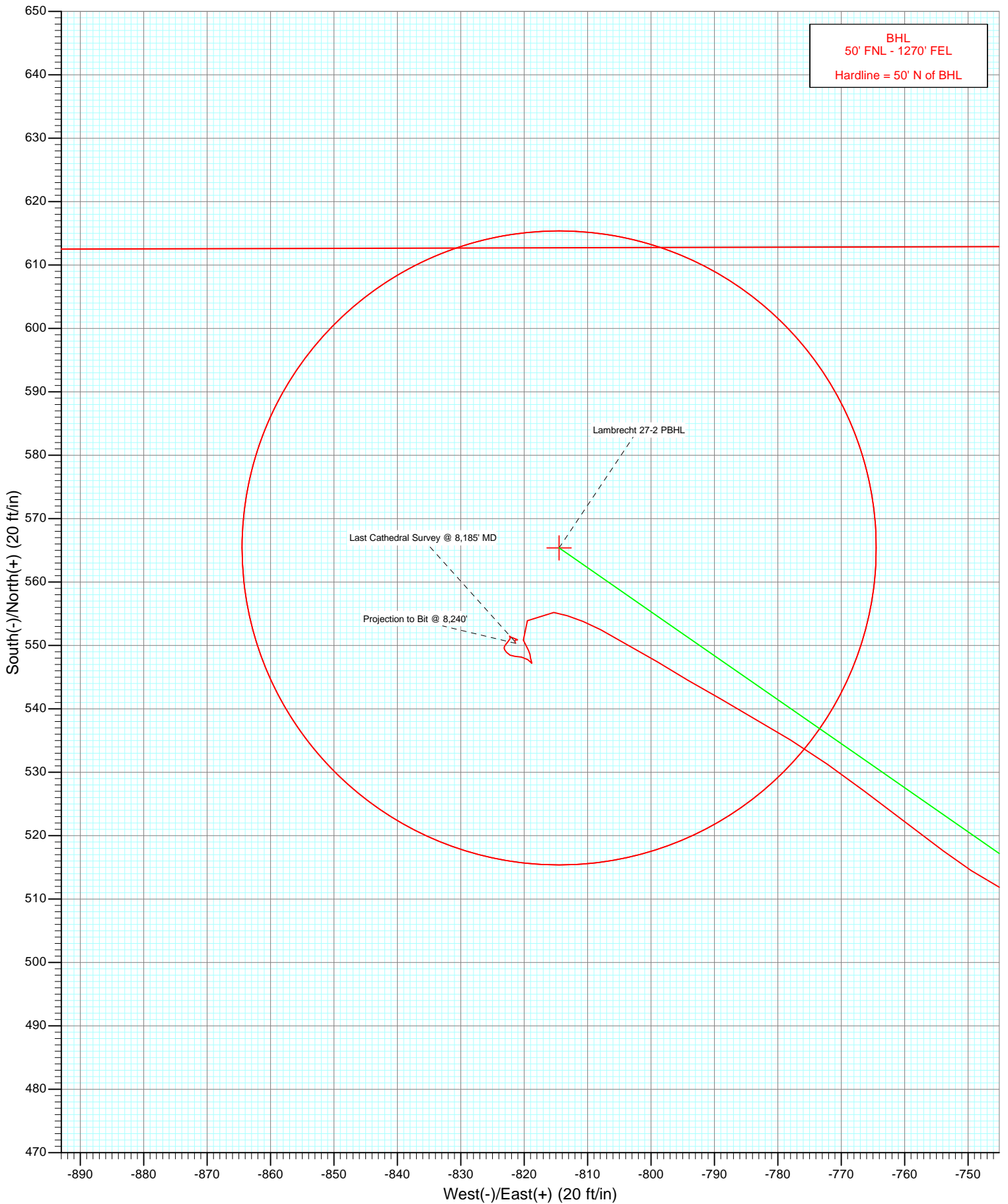


Magnetic Field  
Strength: 52846.9snT  
Dip Angle: 66.75°  
Date: 6/27/2012  
Model: IGRF2010

<div>DD</div> <div>Lambrecht 27-2</div> <div>125400; 177755; DN</div> <div>WELL @ 4954.0ft (Xoreme 11)</div> <div>GL @ 4539.0</div> <div>North American Datum 1983</div> <div>Well Lambrecht 27-2, True North</div>							
Type	Target	Lambrecht 27-2 PBHL	Azimuth	Origin Type Slot	N/S	E/W	From TVD
Target					0.0	0.0	0.0
Lambrecht 27-2 PBHL			TVD 8109.0	+N/-S 565.4	+E/-W -814.5	Latitude 40.087394	Longitude -104.853378



# Cathedral Energy Services

## Survey Report

<b>Company:</b>	Anadarko Petroleum Corporation	<b>Local Co-ordinate Reference:</b>	Well Lambrecht 27-2
<b>Project:</b>	DJ Wattenberg	<b>TVD Reference:</b>	WELL @ 4954.0ft (Xtreme 11)
<b>Site:</b>	S2-T1N-R67W (Lambrecht)	<b>MD Reference:</b>	WELL @ 4954.0ft (Xtreme 11)
<b>Well:</b>	Lambrecht 27-2	<b>North Reference:</b>	True
<b>Wellbore:</b>	DD	<b>Survey Calculation Method:</b>	Minimum Curvature
<b>Design:</b>	DD	<b>Database:</b>	USA EDM 5000 Multi Users DB

<b>Project</b>	DJ Wattenberg		
<b>Map System:</b>	US State Plane 1983	<b>System Datum:</b>	Mean Sea Level
<b>Geo Datum:</b>	North American Datum 1983		
<b>Map Zone:</b>	Colorado Northern Zone		

Site		S2-T1N-R67W (Lambrecht)			
Site Position:		Northing:	1,274,774.66 ft	Latitude:	40.085813
From:	Lat/Long	Easting:	3,181,757.64 ft	Longitude:	-104.850421
Position Uncertainty:	0.0 ft	Slot Radius:	13.200 in	Grid Convergence:	0.42 °

Well	Lambrecht 27-2					
Well Position	+N/-S	0.0 ft	Northing:	1,274,785.12 ft	Latitude:	40.085842
	+E/-W	0.0 ft	Easting:	3,181,745.53 ft	Longitude:	-104.850464
Position Uncertainty		0.0 ft	Wellhead Elevation:	ft	Ground Level:	4,939.0 ft

<b>Wellbore</b>	DD				
<b>Magnetics</b>	<b>Model Name</b>	<b>Sample Date</b>	<b>Declination (°)</b>	<b>Dip Angle (°)</b>	<b>Field Strength (nT)</b>
	IGRF2010	6/27/2012	8.74	66.75	52,847

Design	DD			
Audit Notes:				
Version:	1.0	Phase:	ACTUAL	Tie On Depth: 0.0
Vertical Section:	Depth From (TVD)	+N/-S	+E/-W	Direction
	(ft)	(ft)	(ft)	(°)
	0.0	0.0	0.0	304.77

<b>Survey Program</b>	<b>Date</b>	7/3/2012			
<b>From (ft)</b>	<b>To (ft)</b>	<b>Survey (Wellbore)</b>	<b>Tool Name</b>	<b>Description</b>	
164.0	8,240.0	Survey #1 (DD)	MWD	Geolink MWD	

<b>Survey</b>										
<b>Measured Depth (ft)</b>	<b>Inclination (°)</b>	<b>Azimuth (°)</b>	<b>Vertical Depth (ft)</b>	<b>+N/-S (ft)</b>	<b>+E/-W (ft)</b>	<b>Vertical Section (ft)</b>	<b>Dogleg Rate (°/100ft)</b>	<b>Build Rate (°/100ft)</b>	<b>Formations / Comments</b>	
0.0	0.00	0.00	0.0	0.0	0.0	0.0	0.00	0.00		
164.0	1.80	324.30	164.0	2.1	-1.5	2.4	1.10	1.10		
253.0	3.10	313.00	252.9	4.9	-4.1	6.1	1.55	1.46		
340.0	4.70	309.10	339.7	8.7	-8.6	12.0	1.86	1.84		
417.0	5.60	304.60	416.4	12.8	-14.1	18.9	1.28	1.17		
507.0	6.90	303.50	505.8	18.3	-22.2	28.7	1.45	1.44		
598.0	9.00	304.10	596.0	25.3	-32.7	41.3	2.31	2.31		
689.0	10.60	302.70	685.6	33.8	-45.6	56.8	1.78	1.76		
780.0	11.40	302.60	775.0	43.2	-60.2	74.1	0.88	0.88		
871.0	10.90	300.00	864.2	52.4	-75.3	91.7	0.78	-0.55		
906.0	10.80	298.90	898.6	55.6	-81.0	98.2	0.66	-0.29		
975.0	12.00	299.10	966.2	62.2	-92.9	111.8	1.74	1.74		
1,064.0	11.40	298.80	1,053.4	70.9	-108.7	129.8	0.68	-0.67		

# Cathedral Energy Services

## Survey Report

<b>Company:</b>	Anadarko Petroleum Corporation	<b>Local Co-ordinate Reference:</b>	Well Lambrecht 27-2
<b>Project:</b>	DJ Wattenberg	<b>TVD Reference:</b>	WELL @ 4954.0ft (Xtreme 11)
<b>Site:</b>	S2-T1N-R67W (Lambrecht)	<b>MD Reference:</b>	WELL @ 4954.0ft (Xtreme 11)
<b>Well:</b>	Lambrecht 27-2	<b>North Reference:</b>	True
<b>Wellbore:</b>	DD	<b>Survey Calculation Method:</b>	Minimum Curvature
<b>Design:</b>	DD	<b>Database:</b>	USA EDM 5000 Multi Users DB

Survey									
Measured Depth (ft)	Inclination (°)	Azimuth (°)	Vertical Depth (ft)	+N/-S (ft)	+E/-W (ft)	Vertical Section (ft)	Dogleg Rate (°/100ft)	Build Rate (°/100ft)	Formations / Comments
1,155.0	12.70	307.90	1,142.4	81.4	-124.5	148.7	2.53	1.43	
1,246.0	12.00	307.80	1,231.3	93.4	-139.9	168.1	0.77	-0.77	
1,337.0	13.40	311.00	1,320.1	106.1	-155.3	188.1	1.72	1.54	
1,428.0	12.80	311.50	1,408.7	119.7	-170.8	208.6	0.67	-0.66	
1,518.0	14.80	311.50	1,496.1	133.9	-186.9	229.9	2.22	2.22	
1,609.0	16.00	304.40	1,583.8	148.7	-205.9	254.0	2.45	1.32	
1,700.0	15.50	304.00	1,671.4	162.6	-226.4	278.7	0.56	-0.55	
1,791.0	14.70	304.00	1,759.3	175.8	-246.0	302.4	0.88	-0.88	
1,882.0	14.10	303.60	1,847.4	188.4	-264.8	325.0	0.67	-0.66	
1,972.0	13.40	302.40	1,934.8	200.1	-282.8	346.4	0.84	-0.78	
2,063.0	12.60	301.00	2,023.5	210.8	-300.2	366.8	0.94	-0.88	
2,154.0	11.80	298.30	2,112.4	220.4	-316.9	386.0	1.08	-0.88	
2,245.0	10.90	298.30	2,201.7	228.9	-332.6	403.8	0.99	-0.99	
2,335.0	12.00	303.40	2,289.9	238.0	-348.0	421.6	1.66	1.22	
2,426.0	10.90	301.00	2,379.1	247.7	-363.2	439.6	1.32	-1.21	
2,517.0	12.20	305.50	2,468.2	257.7	-378.4	457.8	1.74	1.43	
2,608.0	10.90	303.60	2,557.4	268.0	-393.4	476.0	1.49	-1.43	
2,699.0	11.00	306.20	2,646.7	277.9	-407.6	493.3	0.55	0.11	
2,789.0	12.10	304.10	2,734.9	288.3	-422.3	511.3	1.31	1.22	
2,880.0	10.80	300.20	2,824.1	297.9	-437.6	529.4	1.66	-1.43	
2,971.0	11.80	310.00	2,913.3	308.2	-452.1	547.1	2.38	1.10	
3,061.0	10.70	309.30	3,001.6	319.4	-465.6	564.6	1.23	-1.22	
3,152.0	11.40	309.90	3,090.9	330.5	-479.1	582.0	0.78	0.77	
3,243.0	12.10	313.00	3,180.0	342.8	-492.9	600.4	1.04	0.77	
3,334.0	13.00	306.30	3,268.8	355.4	-508.2	620.1	1.88	0.99	
3,424.0	11.50	306.50	3,356.8	366.7	-523.5	639.2	1.67	-1.67	
3,515.0	11.20	307.00	3,446.0	377.4	-537.9	657.1	0.35	-0.33	
3,606.0	11.00	308.70	3,535.3	388.2	-551.7	674.6	0.42	-0.22	
3,697.0	12.60	306.30	3,624.4	399.5	-566.5	693.1	1.84	1.76	
3,787.0	12.70	299.50	3,712.2	410.1	-583.0	712.8	1.66	0.11	
3,878.0	10.30	298.10	3,801.4	418.9	-598.9	730.9	2.65	-2.64	
3,969.0	11.40	301.50	3,890.7	427.4	-613.7	747.9	1.40	1.21	
4,060.0	9.60	300.80	3,980.2	436.0	-627.9	764.5	1.98	-1.98	
4,150.0	11.30	306.70	4,068.7	445.1	-641.4	780.8	2.23	1.89	
4,241.0	11.80	301.30	4,157.9	455.3	-656.5	799.0	1.31	0.55	
4,332.0	12.50	304.50	4,246.8	465.7	-672.6	818.1	1.07	0.77	
4,423.0	11.00	305.70	4,335.9	476.4	-687.8	836.6	1.67	-1.65	
4,514.0	9.30	304.30	4,425.5	485.6	-700.9	852.7	1.89	-1.87	
4,605.0	10.70	303.10	4,515.1	494.3	-714.1	868.5	1.56	1.54	
4,695.0	9.70	301.10	4,603.7	502.8	-727.5	884.4	1.18	-1.11	
4,786.0	9.10	294.00	4,693.5	509.7	-740.7	899.1	1.43	-0.66	
4,877.0	10.50	306.80	4,783.2	517.6	-753.9	914.5	2.84	1.54	
4,968.0	9.30	307.50	4,872.8	527.0	-766.4	930.1	1.33	-1.32	
5,059.0	8.60	301.80	4,962.7	535.1	-778.0	944.2	1.24	-0.77	
5,149.0	7.80	298.90	5,051.8	541.6	-789.1	957.0	1.00	-0.89	
5,240.0	6.70	302.10	5,142.0	547.4	-799.0	968.5	1.29	-1.21	
5,331.0	6.30	297.00	5,232.5	552.5	-807.9	978.7	0.77	-0.44	
5,422.0	3.80	278.80	5,323.1	555.2	-815.3	986.4	3.23	-2.75	
5,512.0	2.70	214.40	5,413.0	553.9	-819.5	989.0	3.98	-1.22	
5,603.0	1.80	156.60	5,503.9	550.8	-820.1	987.8	2.54	-0.99	
5,694.0	0.50	142.10	5,594.9	549.2	-819.3	986.2	1.45	-1.43	
5,785.0	0.40	180.40	5,685.9	548.6	-819.1	985.7	0.34	-0.11	
5,875.0	0.40	164.80	5,775.9	548.0	-819.0	985.3	0.12	0.00	

# Cathedral Energy Services

## Survey Report

<b>Company:</b>	Anadarko Petroleum Corporation	<b>Local Co-ordinate Reference:</b>	Well Lambrecht 27-2
<b>Project:</b>	DJ Wattenberg	<b>TVD Reference:</b>	WELL @ 4954.0ft (Xtreme 11)
<b>Site:</b>	S2-T1N-R67W (Lambrecht)	<b>MD Reference:</b>	WELL @ 4954.0ft (Xtreme 11)
<b>Well:</b>	Lambrecht 27-2	<b>North Reference:</b>	True
<b>Wellbore:</b>	DD	<b>Survey Calculation Method:</b>	Minimum Curvature
<b>Design:</b>	DD	<b>Database:</b>	USA EDM 5000 Multi Users DB

Survey									
Measured Depth (ft)	Inclination (°)	Azimuth (°)	Vertical Depth (ft)	+N/-S (ft)	+E/-W (ft)	Vertical Section (ft)	Dogleg Rate (°/100ft)	Build Rate (°/100ft)	Formations / Comments
5,966.0	0.30	168.10	5,866.9	547.4	-818.9	984.8	0.11	-0.11	
6,057.0	0.00	1.50	5,957.9	547.2	-818.8	984.7	0.33	-0.33	
6,148.0	0.20	322.50	6,048.9	547.3	-818.9	984.8	0.22	0.22	
6,239.0	0.70	305.30	6,139.9	547.8	-819.5	985.5	0.56	0.55	
6,330.0	0.70	278.80	6,230.9	548.2	-820.5	986.6	0.35	0.00	
6,420.0	0.60	274.20	6,320.9	548.3	-821.5	987.5	0.13	-0.11	
6,511.0	0.40	299.90	6,411.9	548.5	-822.2	988.2	0.33	-0.22	
6,602.0	0.40	314.60	6,502.9	548.9	-822.7	988.8	0.11	0.00	
6,693.0	0.20	335.50	6,593.9	549.2	-823.0	989.3	0.25	-0.22	
6,783.0	0.10	318.00	6,683.9	549.4	-823.1	989.5	0.12	-0.11	
6,874.0	0.20	12.10	6,774.9	549.6	-823.2	989.6	0.18	0.11	
6,965.0	0.10	27.10	6,865.9	549.9	-823.1	989.7	0.12	-0.11	
7,056.0	0.40	36.50	6,956.9	550.2	-822.9	989.7	0.33	0.33	
7,147.0	0.40	37.80	7,047.9	550.7	-822.5	989.7	0.01	0.00	
7,237.0	0.20	30.20	7,137.9	551.1	-822.2	989.7	0.23	-0.22	
7,328.0	0.20	323.00	7,228.9	551.3	-822.2	989.8	0.24	0.00	
7,419.0	0.00	278.80	7,319.9	551.5	-822.3	990.0	0.22	-0.22	
7,510.0	0.00	167.30	7,410.9	551.5	-822.3	990.0	0.00	0.00	
7,600.0	0.00	164.80	7,500.9	551.5	-822.3	990.0	0.00	0.00	
7,691.0	0.20	129.40	7,591.9	551.4	-822.2	989.8	0.22	0.22	
7,782.0	0.40	105.00	7,682.9	551.2	-821.8	989.4	0.26	0.22	
7,872.0	0.30	118.50	7,772.9	551.0	-821.3	988.8	0.14	-0.11	
7,963.0	0.00	98.80	7,863.9	550.9	-821.0	988.6	0.33	-0.33	
8,054.0	0.20	278.80	7,954.9	550.9	-821.2	988.7	0.22	0.22	
8,145.0	0.20	208.20	8,045.9	550.8	-821.4	988.9	0.25	0.00	
8,185.0	0.30	180.00	8,085.9	550.6	-821.5	988.8	0.39	0.25	Last Cathedral Survey @ 8,185' MD
8,240.0	0.40	143.30	8,140.9	550.3	-821.4	988.5	0.44	0.18	Projection to Bit @ 8,240'

Targets									
Target Name	Dip Angle (°)	Dip Dir. (°)	TVD (ft)	+N/-S (ft)	+E/-W (ft)	Northing (ft)	Easting (ft)	Latitude	Longitude
Lambrecht 27-2 PBHL	0.00	0.00	8,109.0	565.4	-814.5	1,275,344.53	3,180,926.93	40.087394	-104.853375
- hit/miss target									
- Shape									
- actual wellpath misses target center by 28.3ft at 8185.0ft MD (8085.9 TVD, 550.6 N, -821.5 E)									
- Circle (radius 50.0)									

Design Annotations				
Measured Depth (ft)	Vertical Depth (ft)	Local Coordinates		Comment
		+N/-S (ft)	+E/-W (ft)	
8,185.0	8,085.9	550.6	-821.5	Last Cathedral Survey @ 8,185' MD
8,240.0	8,140.9	550.3	-821.4	Projection to Bit @ 8,240'

Checked By: \_\_\_\_\_ Approved By: \_\_\_\_\_ Date: \_\_\_\_\_