
WPX ENERGY ROCKY MOUNTAIN LLC-EBUS

**KP 11-17
KOKPELLI
Garfield County , Colorado**

Cement Surface Casing
25-Apr-2012

Post Job Report

The Road to Excellence Starts with Safety

Sold To #: 300721	Ship To #: 300721	Quote #:	Sales Order #: 9431059
Customer: WPX ENERGY ROCKY MOUNTAIN LLC-EBUS	Customer Rep: Valad, Gary		
Well Name: KP	Well #: 11-17	API/UWI #: 05-045-20998	
Field: KOKPELLI	City (SAP): SILT	County/Parish: Garfield	State: Colorado
Lat: N 39.526 deg. OR N 39 deg. 31 min. 31.811 secs.	Long: W 107.58 deg. OR W -108 deg. 25 min. 12.418 secs.		
Contractor: NABORS 574	Rig/Platform Name/Num: NABORS 574		
Job Purpose: Cement Surface Casing			
Well Type: Development Well	Job Type: Cement Surface Casing		
Sales Person: MAYO, MARK	Srv Supervisor: YOUNG, JEREMY	MBU ID Emp #: 418013	

Job Personnel

HES Emp Name	Exp Hrs	Emp #	HES Emp Name	Exp Hrs	Emp #	HES Emp Name	Exp Hrs	Emp #
GOWEN, WESLEY M	14.5	496205	KUKUS, CARLTON Dean	14.5	458577	WALPOLE, DARREN Livingston	14.5	485294
YOUNG, JEREMY R	14.5	418013						

Equipment

HES Unit #	Distance-1 way	HES Unit #	Distance-1 way	HES Unit #	Distance-1 way	HES Unit #	Distance-1 way
10248057	60 mile	10784080	60 mile	11259881	60 mile	11360883	60 mile
11560046	60 mile	11808833	60 mile				

Job Hours

Date	On Location Hours	Operating Hours	Date	On Location Hours	Operating Hours	Date	On Location Hours	Operating Hours
04/25/2012	14.5	3						
TOTAL			Total is the sum of each column separately					

Job

Formation Name	Formation Depth (MD)	Top	Bottom	Form Type	Job depth MD	Job Depth TVD	Water Depth	Wk Ht Above Floor	Perforation Depth (MD)	From	To	Job Times	Date	Time	Time Zone
				BHST	1348.9 ft	1348.9 ft		4. ft				Called Out	25 - Apr - 2012	05:20	MST
												On Location	25 - Apr - 2012	09:00	MST
												Job Started	25 - Apr - 2012	21:16	MST
												Job Completed	25 - Apr - 2012	22:26	MST
												Departed Loc	25 - Apr - 2012	23:30	MST

Well Data

Description	New / Used	Max pressure psig	Size in	ID in	Weight lbm/ft	Thread	Grade	Top MD ft	Bottom MD ft	Top TVD ft	Bottom TVD ft
13 1/2" OPEN HOLE				13.5				.	1363.		
9 5/8" SURFACE CASING	Unknown		9.625	9.001	32.3		H-40	.	1348.9		

Sales/Rental/3rd Party (HES)

Description	Qty	Qty uom	Depth	Supplier
PLUG,CMTG,TOP,9 5/8,HWE,8.16 MIN/9.06 MA	1	EA		

Tools and Accessories

Type	Size	Qty	Make	Depth	Type	Size	Qty	Make	Depth	Type	Size	Qty	Make
Guide Shoe					Packer					Top Plug	9.625	1	HES
Float Shoe					Bridge Plug					Bottom Plug			
Float Collar					Retainer					SSR plug set			
Insert Float										Plug Container	9.625	1	HES
Stage Tool										Centralizers			

Miscellaneous Materials

Gelling Agt	Conc	Surfactant	Conc	Acid Type	Qty	Conc	%
Treatment Fld	Conc	Inhibitor	Conc	Sand Type	Size	Qty	

Fluid Data

Stage/Plug #: 1

Fluid #	Stage Type	Fluid Name	Qty	Qty uom	Mixing Density lbm/gal	Yield ft ³ /sk	Mix Fluid Gal/sk	Rate bbl/min	Total Mix Fluid Gal/sk
1	Fresh Water	FRESH WATER	20.00	bbl	8.33	.0	.0	4	
2	Lead Cement	VERSACEM (TM) SYSTEM (452010)	210.0	sacks	12.3	2.38	13.75	8	13.75
	13.75 Gal	FRESH WATER							
3	Tail Cement	VERSACEM (TM) SYSTEM (452010)	160.0	sacks	12.8	2.11	11.75	8	11.75
	11.75 Gal	FRESH WATER							
4	Displacement Fluid	FRESH WATER	102.70	bbl	8.34	.0	.0	10	
Calculated Values		Pressures		Volumes					
Displacement	102.7	Shut In: Instant		Lost Returns	NO	Cement Slurry	149.1	Pad	
Top Of Cement	SURFACE	5 Min		Cement Returns	30	Actual Displacement	102.7	Treatment	
Frac Gradient		15 Min		Spacers	20	Load and Breakdown		Total Job	271.8
Rates									
Circulating		Mixing	8	Displacement	10	Avg. Job			9
Cement Left In Pipe	Amount	44.31 ft	Reason	Shoe Joint					
Frac Ring # 1 @	ID		Frac ring # 2 @	ID		Frac Ring # 3 @	ID		Frac Ring # 4 @
The Information Stated Herein Is Correct				Customer Representative Signature					

The Road to Excellence Starts with Safety

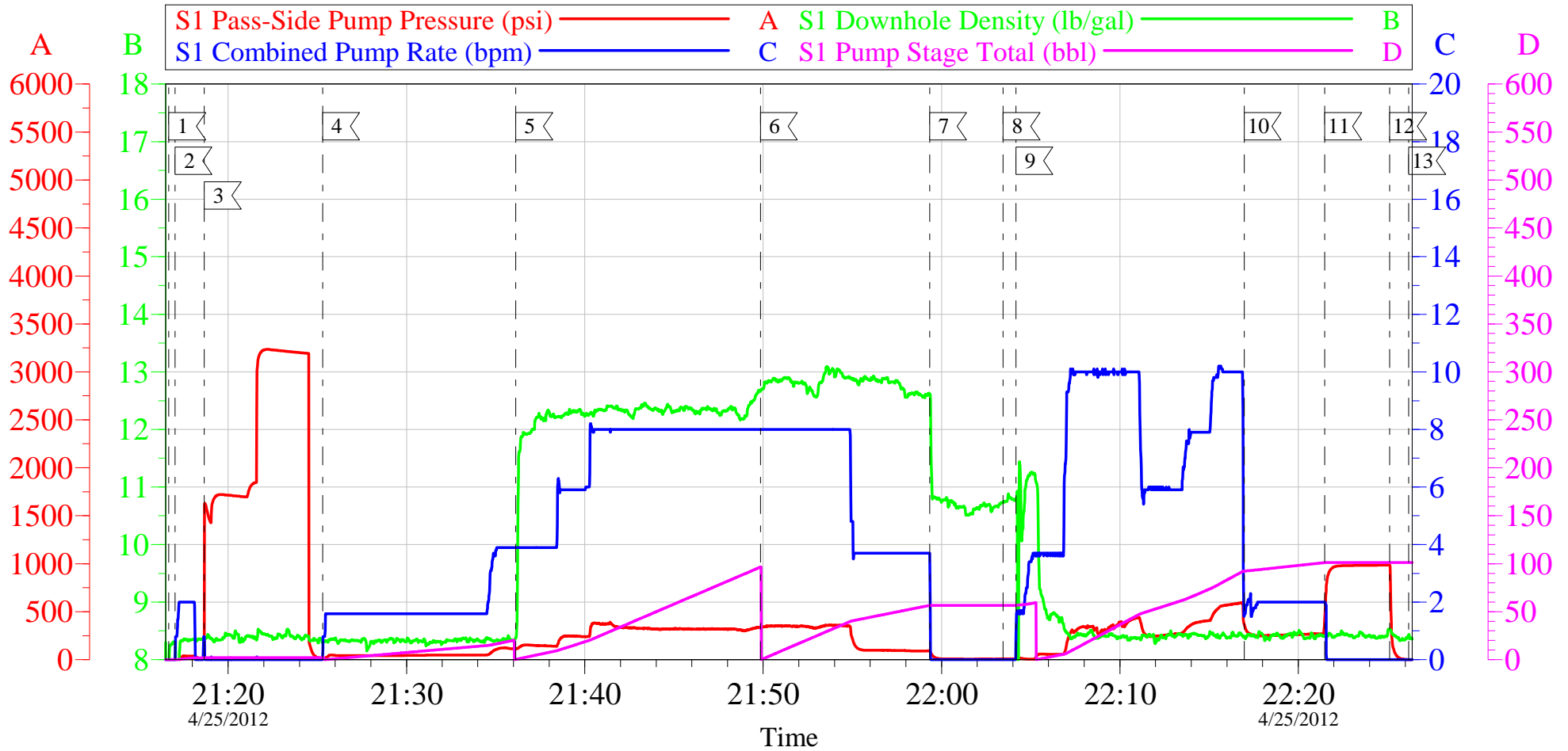
Sold To #: 300721		Ship To #: 300721		Quote #:		Sales Order #: 9431059	
Customer: WPX ENERGY ROCKY MOUNTAIN LLC-EBUS				Customer Rep: Valad, Gary			
Well Name: KP			Well #: 11-17			API/UWI #: 05-045-20998	
Field: KOKPELLI		City (SAP): SILT		County/Parish: Garfield		State: Colorado	
Legal Description:							
Lat: N 39.526 deg. OR N 39 deg. 31 min. 31.811 secs.				Long: W 107.58 deg. OR W -108 deg. 25 min. 12.418 secs.			
Contractor: NABORS 574			Rig/Platform Name/Num: NABORS 574				
Job Purpose: Cement Surface Casing						Ticket Amount:	
Well Type: Development Well			Job Type: Cement Surface Casing				
Sales Person: MAYO, MARK			Srvc Supervisor: YOUNG, JEREMY			MBU ID Emp #: 418013	

Activity Description	Date/Time	Cht #	Rate bbl/min	Volume bbl		Pressure psig		Comments
				Stage	Total	Tubing	Casing	
Call Out	04/25/2012 05:20							
Pre-Convoy Safety Meeting	04/25/2012 06:50							WITH ALL HES PERSONNEL
Crew Leave Yard	04/25/2012 07:00							
Arrive At Loc	04/25/2012 09:00							RIG WAS RUNNING CASING UPON HES ARRIVAL
Assessment Of Location Safety Meeting	04/25/2012 20:00							WITH ALL HES PERSONNEL
Other	04/25/2012 20:10							SPOT EQUIPMENT
Pre-Rig Up Safety Meeting	04/25/2012 20:20							WITH ALL HES PERSONNEL
Rig-Up Equipment	04/25/2012 20:30							
Pre-Job Safety Meeting	04/25/2012 21:00							WITH ALL PERSONNEL ON LOCATION
Start Job	04/25/2012 21:16							TD 1363 FT, TP 1348.87 FT, SHOE 44.31 FT, HOLE 13 1/2 IN, MUD WT 9.6 PPG, CSG 9 5/8 IN 32.3 LB/FT H-40
Other	04/25/2012 21:17		2	2			38.0	FILL LINES WITH FRESH WATER
Test Lines	04/25/2012 21:18							TEST LINES TO 3200 PSI. PRESSURE HOLDING
Pump Spacer 1	04/25/2012 21:25		4	20			117.0	FRESH WATER
Pump Lead Cement	04/25/2012 21:36		8	89			380.0	210 SKS AT 12.3 PPG, 2.38 FT3/SK, 13.75 GAL/SK

Activity Description	Date/Time	Cht #	Rate bbl/min	Volume bbl		Pressure psig		Comments
				Stage	Total	Tubing	Casing	
Pump Tail Cement	04/25/2012 21:49		8	60.1			340.0	160 SKS AT 12.8 PPG, 2.11 FT3/SK, 11.75 GAL/SK
Shutdown	04/25/2012 21:59							
Drop Top Plug	04/25/2012 22:03							PLUG LAUNCHED
Pump Displacement	04/25/2012 22:04		10	92.7			590.0	FRESH WATER
Slow Rate	04/25/2012 22:16		2	10			280.0	SLOW RATE 10 BBLs PRIOR TO CALCULATED DISPLACEMENT
Bump Plug	04/25/2012 22:21		2		102.7		980.0	PLUG BUMPED
Check Floats	04/25/2012 22:25							FLOATS HOLDING. RETURNED 0.5 BBL H2O TO PUMP
End Job	04/25/2012 22:26							PIPE WAS STATIC DURING JOB. GOOD CIRCULATION THROUGHOUT JOB. HES RETURNED 30 BBL OF CEMENT TO SURFACE
Pre-Rig Down Safety Meeting	04/25/2012 22:30							WITH ALL HES PERSONNEL
Rig-Down Equipment	04/25/2012 22:35							
Pre-Convoy Safety Meeting	04/25/2012 23:20							WITH ALL HES PERSONNEL
Crew Leave Location	04/25/2012 23:30							
Comment	04/25/2012 23:31							THANK YOU FOR USING HALLIBURTON CEMENT DEPARTMENT. JEREMY YOUNG AND CREW.

WPX - KP 11-17

9 5/8 SURFACE



Local Event Log

1 START JOB	21:16:40	2 FILL LINES	21:17:01	3 TEST LINES	21:18:40
4 PUMP H2O SPACER	21:25:18	5 PUMP LEAD CEMENT	21:36:08	6 PUMP TAIL CEMENT	21:49:51
7 SHUTDOWN	21:59:20	8 DROP TOP PLUG	22:03:27	9 PUMP DISPLACEMENT	22:04:10
10 SLOW RATE	22:16:58	11 BUMP PLUG	22:21:29	12 CHECK FLOATS	22:25:08
13 END JOB	22:26:12				

Customer: WPX
Well Description: KP 11-17
Company Rep: GARY VALAD

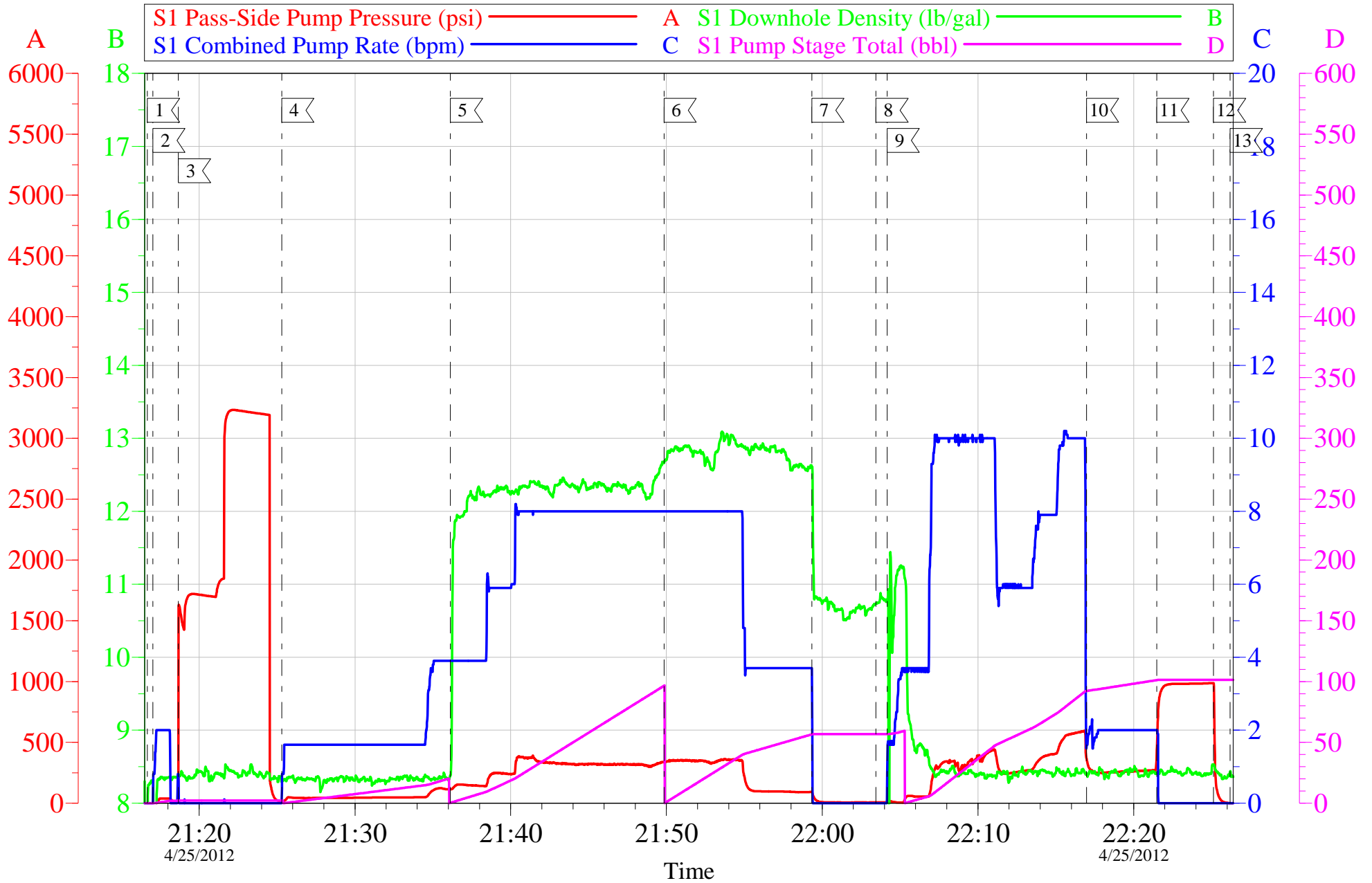
Job Date: 25-Apr-2012
Job Type: SURFACE
Cement Supervisor: JEREMY YOUNG

Sales Order #: 9431059
ADC Used: YES
Elite #5: WESLEY GOWEN

OptiCem v6.4.10
25-Apr-12 22:40

WPX - KP 11-17

9 5/8 SURFACE



Customer: WPX
Well Description: KP 11-17
Company Rep: GARY VALAD

Job Date: 25-Apr-2012
Job Type: SURFACE
Cement Supervisor: JEREMY YOUNG

Sales Order #: 9431059
ADC Used: YES
Elite #5: WESLEY GOWEN

OptiCem v6.4.10
25-Apr-12 22:40

Sales Order #: 9431059	Line Item: 10	Survey Conducted Date: 4/25/2012
Customer: WPX ENERGY ROCKY MOUNTAIN LLC-EBUS		Job Type (BOM): CMT SURFACE CASING BOM
Customer Representative: GARY VALAD		API / UWI: (leave blank if unknown) 05-045-20998
Well Name: KP		Well Number: 11-17
Well Type: Development Well	Well Country: United States of America	
H2S Present:	Well State: Colorado	Well County: Garfield

Dear Customer,

We hope that you were satisfied with the service quality of this job performed by Halliburton. It is the aim of our management and service personnel to deliver equipment and service of a standard unmatched in the service sector of the energy industry.

Please take the time to let us know if our performance met with your satisfaction. Please be as critical as possible to ensure we constantly improve our service. Your comments are of great value to us and are intended for the exclusive use of Halliburton.

CUSTOMER SATISFACTION SURVEY

CATEGORY	CUSTOMER SATISFACTION RESPONSE	
Survey Conducted Date	The date the survey was conducted	4/25/2012
Survey Interviewer	The survey interviewer is the person who initiated the survey.	JEREMY YOUNG (HX37077)
Customer Participation	Did the customer participate in this survey? (Y/N)	Yes
Customer Representative	Enter the Customer representative name	GARY VALAD
HSE	Was our HSE performance satisfactory? Circle Y or N	Yes
Equipment	Were you satisfied with our Equipment? Circle Y or N	Yes
Personnel	Were you satisfied with our people? Circle Y or N	Yes
Customer Comment	Customer's Comment	GOOD JOB

CUSTOMER SIGNATURE

Sales Order #: 9431059	Line Item: 10	Survey Conducted Date: 4/25/2012
Customer: WPX ENERGY ROCKY MOUNTAIN LLC-EBUS		Job Type (BOM): CMT SURFACE CASING BOM
Customer Representative: GARY VALAD		API / UWI: (leave blank if unknown) 05-045-20998
Well Name: KP		Well Number: 11-17
Well Type: Development Well	Well Country: United States of America	
H2S Present:	Well State: Colorado	Well County: Garfield

KEY PERFORMANCE INDICATORS

General	
Survey Conducted Date	4/25/2012
The date the survey was conducted	

Cementing KPI Survey	
Type of Job	0
Select the type of job. (Cementing or Non-Cementing)	
Select the Maximum Deviation range for this Job	Vertical
What is the highest deviation for the job you just completed? This may not be the maximum well deviation.	
Total Operating Time (hours)	3
Total Operating Hours Including Rig-up, Pumping, Rig-down. Enter in decimal format.	
HSE Incident, Accident, Injury	No
HSE Incident, Accident, Injury. This should be recordable incidents only.	
Was the job purpose achieved?	Yes
Was the job delivered correctly as per customer agreed design?	
Operating Hours (Pumping Hours)	1
Total number of hours pumping fluid on this job. Enter in decimal format.	
Customer Non-Productive Rig Time (hrs)	0
Lost time due to Halliburton in the start, execution, or completion of an ordered service or product, or delays in a follow-on service. Enter in decimal format. 0 if none.	
Type of Rig Classification Job Was Performed	Drilling Rig (Portable)
Type Of Rig (classification) Job Was Performed On	
Number Of JSAs Performed	6
Number Of Jsas Performed	
Number of Unplanned Shutdowns	0
Unplanned shutdown is when injection stops for any period of time.	
Was this a Primary Cement Job (Yes / No)	Yes

Sales Order #: 9431059	Line Item: 10	Survey Conducted Date: 4/25/2012
Customer: WPX ENERGY ROCKY MOUNTAIN LLC-EBUS		Job Type (BOM): CMT SURFACE CASING BOM
Customer Representative: GARY VALAD		API / UWI: (leave blank if unknown) 05-045-20998
Well Name: KP		Well Number: 11-17
Well Type: Development Well	Well Country: United States of America	
H2S Present:	Well State: Colorado	Well County: Garfield

Primary Cement Job= Casing job, Liner job, or Tie-back job.	
Did We Run Wiper Plugs? Did We Run Top And Bottom Casing Wiper Plugs?	Top
Mixing Density of Job Stayed in Designed Density Range (0-100%) Density Range defined as +/- .20 ppg. Calculation: Total BBLs cement mixed at designed density divided by total BBLs of cement multiplied by 100	90
Was Automated Density Control Used? Was Automated Density Control (ADC) Used ?	Yes
Pump Rate (percent) of Job Stayed At Designed Pump Rate Pump Rate range defined as +/- 1bbl/min. Calculation: Total BBLs of fluid pumped at the designed rate divided by Total BBLs of fluid pumped, multiplied by 100	95
Nbr of Remedial Sqz Jobs Rqd - Competition Number Of Remedial Squeeze Jobs Required After Primary Job Performed By Competition	0
Nbr of Remedial Plug Jobs Rqd - HES Number Of Remedial Plug Jobs Needed After Primary Plug Pumped By HES	0
Nbr of Remedial Sqz Jobs Rqd - HES Number Of Remedial Squeeze Jobs Required After Primary Job Performed By HES	0