

**HALLIBURTON**

---

# **WPX ENERGY ROCKY MOUNTAIN LLC-EBUS**

---

**KP 523-8  
KOKOPELLI  
Garfield County , Colorado**

**Cement Surface Casing**  
**15-Apr-2012**

## **Post Job Report**

Sold To # : 300721

Ship To # :300721

Quote # :

Sales Order # :

9396716

SUMMIT Version: 7.3.0021

Tuesday, April 17, 2012 09:32:00

## The Road to Excellence Starts with Safety

Sold To #: 300721	Ship To #: 300721	Quote #:	Sales Order #: 9396716
Customer: WPX ENERGY ROCKY MOUNTAIN LLC-EBUS	Customer Rep: Hutson, Matt		
Well Name: KP	Well #: 523-8	API/UWI #:	
Field: KOKOPELLI	City (SAP): TULSA	County/Parish: Garfield	State: Colorado
Lat: N 39.536 deg. OR N 39 deg. 32 min. 7.915 secs.	Long: W 107.58 deg. OR W -108 deg. 25 min. 12.493 secs.		
Contractor: NABORS 574	Rig/Platform Name/Num: NABORS 574		
Job Purpose: Cement Surface Casing			
Well Type: Development Well	Job Type: Cement Surface Casing		
Sales Person: MAYO, MARK	Srv Supervisor: REEVES, BRANDON	MBU ID Emp #:	287883

## Job Personnel

HES Emp Name	Exp Hrs	Emp #	HES Emp Name	Exp Hrs	Emp #	HES Emp Name	Exp Hrs	Emp #
DOUT, JACOB J	4.0	430298	PARKER, BRANDON	4.0	503646	REEVES, BRANDON W	4.0	287883
SIMINEO, JEROD M	4.0	479954						

## Equipment

HES Unit #	Distance-1 way	HES Unit #	Distance-1 way	HES Unit #	Distance-1 way	HES Unit #	Distance-1 way
10616651C	60 mile	10784064	60 mile	10867531	60 mile	10989685	60 mile
11006314	60 mile	11583931	60 mile	11808827	60 mile		

## Job Hours

Date	On Location Hours	Operating Hours	Date	On Location Hours	Operating Hours	Date	On Location Hours	Operating Hours
04/15/2012	4	2						

**TOTAL** Total is the sum of each column separately

## Job

Formation Name	Formation Depth (MD)	Top	Bottom	Form Type	Job depth MD	Water Depth	Perforation Depth (MD)	From	To
				BHST	1306. ft				
					Job Depth TVD	4. ft			

## Job Times

Date	Time	Time Zone
15 - Apr - 2012	14:50	MST
15 - Apr - 2012	18:45	MST
15 - Apr - 2012	21:14	MST
15 - Apr - 2012	22:18	MST
15 - Apr - 2012	00:00	MST

## Well Data

Description	New / Used	Max pressure psig	Size in	ID in	Weight lbm/ft	Thread	Grade	Top MD ft	Bottom MD ft	Top TVD ft	Bottom TVD ft
-------------	------------	-------------------	---------	-------	---------------	--------	-------	-----------	--------------	------------	---------------

## Tools and Accessories

Type	Size	Qty	Make	Depth	Type	Size	Qty	Make	Depth	Type	Size	Qty	Make
Guide Shoe					Packer					Top Plug	9.625"	1	
Float Shoe					Bridge Plug					Bottom Plug			
Float Collar					Retainer					SSR plug set			
Insert Float										Plug Container	9.625"	1	
Stage Tool										Centralizers			

## Miscellaneous Materials

Gelling Agt	Conc	Surfactant	Conc	Acid Type	Qty	Conc	%
Treatment Fld	Conc	Inhibitor	Conc	Sand Type	Size	Qty	

## Fluid Data

Stage/Plug #: 1									
Fluid #	Stage Type	Fluid Name	Qty	Qty uom	Mixing Density lbm/gal	Yield ft3/sk	Mix Fluid Gal/sk	Rate bbl/min	Total Mix Fluid Gal/sk

Stage/Plug #: 1									
Fluid #	Stage Type	Fluid Name	Qty	Qty uom	Mixing Density uom	Yield uom	Mix Fluid uom	Rate uom	Total Mix Fluid uom

Stage/Plug #: 1									
Fluid #	Stage Type	Fluid Name	Qty	Qty uom	Mixing Density lbm/gal	Yield ft <sup>3</sup> /sk	Mix Fluid Gal/sk	Rate bbl/min	Total Mix Fluid Gal/sk
1	Fresh Water		20.00	bbl	8.33	.0	.0	.0	
2	Lead Cement	VERSACEM (TM) SYSTEM (452010)	210.0	sacks	12.3	2.38	13.75		13.75
		13.75 Gal	FRESH WATER						
3	Tail Cement	VERSACEM (TM) SYSTEM (452010)	160.0	sacks	12.8	2.11	11.75		11.75
		11.75 Gal	FRESH WATER						
4	Displacement Fluid		98.00	bbl	8.34	.0	.0	.0	
Calculated Values		Pressures		Volumes					
Displacement	99.3	Shut In: Instant		Lost Returns	NO	Cement Slurry	149.1	Pad	
Top Of Cement	SURFACE	5 Min		Cement Returns	30	Actual Displacement	98	Treatment	
Frac Gradient		15 Min		Spacers	20	Load and Breakdown		Total Job	
Rates									
Circulating		Mixing	7	Displacement	10	Avg. Job			
Cement Left In Pipe	Amount	44.58 ft	Reason	Shoe Joint					
Frac Ring # 1 @	ID	Frac ring # 2 @	ID	Frac Ring # 3 @	ID	Frac Ring # 4 @	ID		
The Information Stated Herein Is Correct				Customer Representative Signature					

*The Road to Excellence Starts with Safety*

Sold To #: 300721		Ship To #: 300721		Quote #:		Sales Order #: 9396716	
Customer: WPX ENERGY ROCKY MOUNTAIN LLC-EBUS				Customer Rep: Hutson, Matt			
Well Name: KP			Well #: 523-8			API/UWI #:	
Field: KOKOPELLI		City (SAP): TULSA		County/Parish: Garfield		State: Colorado	
Legal Description:							
Lat: N 39.536 deg. OR N 39 deg. 32 min. 7.915 secs.				Long: W 107.58 deg. OR W -108 deg. 25 min. 12.493 secs.			
Contractor: NABORS 574			Rig/Platform Name/Num: NABORS 574				
Job Purpose: Cement Surface Casing						Ticket Amount:	
Well Type: Development Well			Job Type: Cement Surface Casing				
Sales Person: MAYO, MARK			Srv Supervisor: REEVES, BRANDON			MBU ID Emp #: 287883	

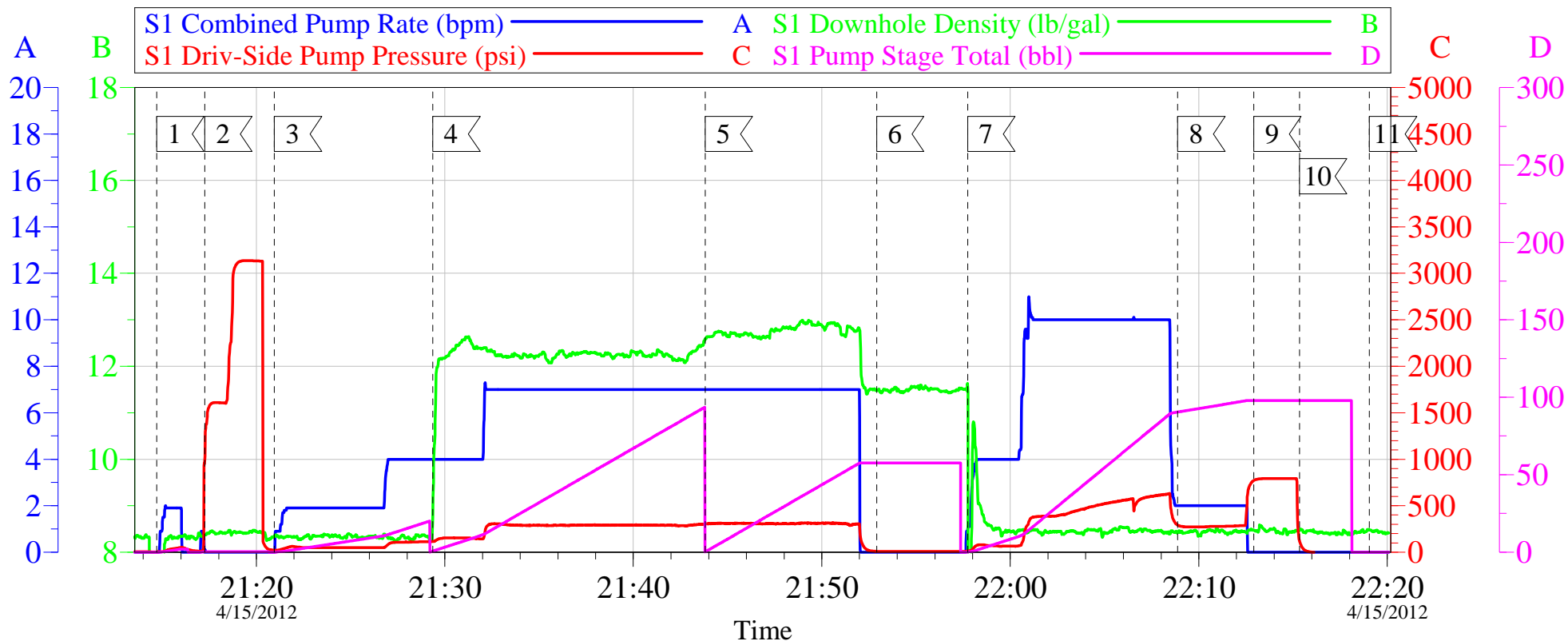
Activity Description	Date/Time	Cht #	Rate bbl/min	Volume bbl		Pressure psig		Comments
				Stage	Total	Tubing	Casing	
Call Out	04/15/2012 14:50							
Pre-Convoy Safety Meeting	04/15/2012 17:00							
Arrive at Location from Service Center	04/15/2012 18:45							RIG IS RUNNING CASING WHEN WE ARRIVED TO LOCATION.
Assessment Of Location Safety Meeting	04/15/2012 19:00							
Other	04/15/2012 19:15							SPOT EQUIPMENT
Pre-Rig Up Safety Meeting	04/15/2012 19:25							
Rig-Up Equipment	04/15/2012 19:30							
Pre-Job Safety Meeting	04/15/2012 20:45							
Start Job	04/15/2012 21:14							TD-1333' TP-1306' SJ-44.58' MW-9.7# HOLE-13 1/2" CASING-9 5/8" 32.3#
Test Lines	04/15/2012 21:16						3130.0	
Pump Spacer 1	04/15/2012 21:20		4	20			110.0	FRESH WATER SPACER
Pump Lead Cement	04/15/2012 21:29		7	89			310.0	210 SKS. @ 12.3# 2.37 YIELD 13.75 WRQ.
Pump Tail Cement	04/15/2012 21:43		7	60.1			310.0	160 SKS. @ 12.8# 2.11 YIELD 11.75 WRQ.
Drop Top Plug	04/15/2012 21:53							
Pump Displacement	04/15/2012 21:57		10				690.0	FRESH WATER DISPLACEMENT
Slow Rate	04/15/2012 22:08		2	89			280.0	

## *Cementing Job Log*

Activity Description	Date/Time	Cht #	Rate bbl/min	Volume bbl		Pressure psig		Comments
				Stage	Total	Tubing	Casing	
Bump Plug	04/15/2012 22:12		2	98			790.0	PLUG LANDED AT 280 PSI. PRESSUERED UP TO 790 PSI.
Check Floats	04/15/2012 22:15							FLOATS HELD
End Job	04/15/2012 22:18							WELL WAS CIRCULATED BEFORE STARTING THE JOB. GOOD CIRCULATION THROUGHOUT THE JOB. PIPE WAS NOT RECIPROCATED. CIRCULATED 30 BBLS. OF CEMENT TO SURFACE.
Rig-Down Equipment	04/15/2012 22:30							THANKS FOR USING HALLIBURTON. BRANDON REEVES AND CREW.

# WPX

## 9 5/8" SURFACE KP 523-8



### Local Event Log

1	START JOB	21:14:43	2	TEST LINES	21:17:16
3	PUMP H2O SPACER	21:20:58	4	PUMP LEAD CEMENT	21:29:22
5	PUMP TAIL CEMENT	21:43:49	6	DROP TOP PLUG	21:52:54
7	PUMP DISPLACEMENT	21:57:45	8	SLOW RATE	22:08:53
9	LAND PLUG	22:12:55	10	CHECK FLOATS	22:15:21
11	END JOB	22:19:03			

Customer: WPX  
Well Description: KP 523-8  
Supervisor: BRANDON REEVES

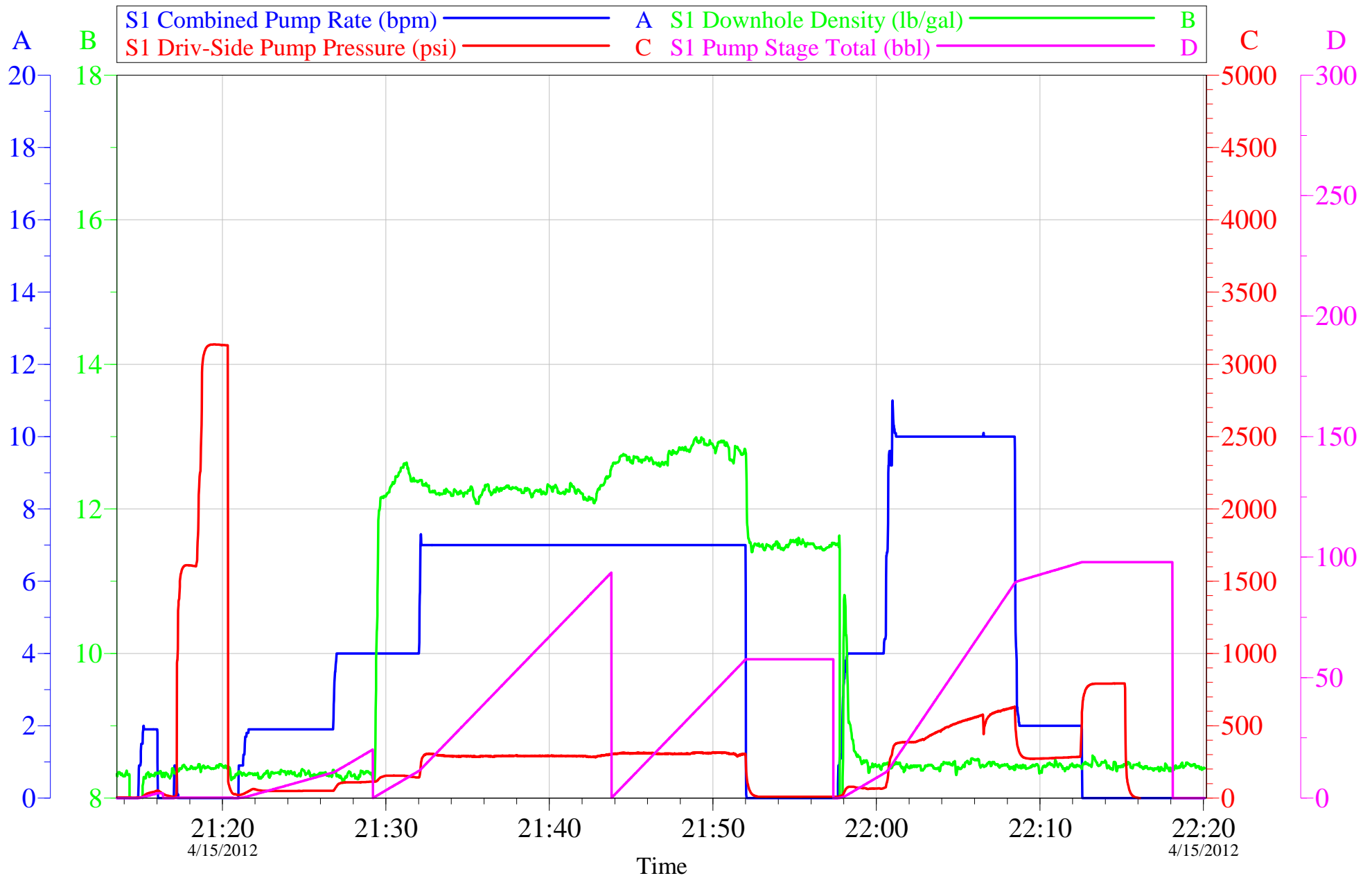
Job Date: 15-Apr-2012  
Job Type: SURFACE  
Company Rep: MATT HUTSON

Sales Order #: 9396716  
ADC Used: YES  
Elite/Operator: 4/JACOB DOUT

OptiCem v6.4.4  
15-Apr-12 22:31

# WPX

## 9 5/8" SURFACE KP 523-8



Customer: WPX	Job Date: 15-Apr-2012	Sales Order #: 9396716
Well Description: KP 523-8	Job Type: SURFACE	ADC Used: YES
Supervisor: BRANDON REEVES	Company Rep: MATT HUTSON	Elite/Operator: 4/JACOB DOUT

OptiCem v6.4.4  
15-Apr-12 22:31

<b>Sales Order #:</b> 9396716	<b>Line Item:</b> 10	<b>Survey Conducted Date:</b> 4/15/2012
<b>Customer:</b> WPX ENERGY ROCKY MOUNTAIN LLC-EBUS		<b>Job Type (BOM):</b> CMT SURFACE CASING BOM
<b>Customer Representative:</b> MATT HUTSON		<b>API / UWI: (leave blank if unknown)</b> AFEYCB2CI3JTL CZGAAA
<b>Well Name:</b> KP		<b>Well Number:</b> 523-8
<b>Well Type:</b> Development Well	<b>Well Country:</b> United States of America	
<b>H2S Present:</b> No	<b>Well State:</b> Colorado	<b>Well County:</b> Garfield

Dear Customer,

We hope that you were satisfied with the service quality of this job performed by Halliburton. It is the aim of our management and service personnel to deliver equipment and service of a standard unmatched in the service sector of the energy industry.

Please take the time to let us know if our performance met with your satisfaction. Please be as critical as possible to ensure we constantly improve our service. Your comments are of great value to us and are intended for the exclusive use of Halliburton.

### CUSTOMER SATISFACTION SURVEY

CATEGORY	CUSTOMER SATISFACTION RESPONSE	
Survey Conducted Date	The date the survey was conducted	4/15/2012
Survey Interviewer	The survey interviewer is the person who initiated the survey.	BRANDON REEVES (HBT9414)
Customer Participation	Did the customer participate in this survey? (Y/N)	Yes
Customer Representative	Enter the Customer representative name	MATT HUTSON
HSE	Was our HSE performance satisfactory? Circle Y or N	Yes
Equipment	Were you satisfied with our Equipment? Circle Y or N	Yes
Personnel	Were you satisfied with our people? Circle Y or N	Yes
Customer Comment	Customer's Comment	

CUSTOMER SIGNATURE



<b>Sales Order #:</b> 9396716	<b>Line Item:</b> 10	<b>Survey Conducted Date:</b> 4/15/2012
<b>Customer:</b> WPX ENERGY ROCKY MOUNTAIN LLC-EBUS		<b>Job Type (BOM):</b> CMT SURFACE CASING BOM
<b>Customer Representative:</b> MATT HUTSON		<b>API / UWI: (leave blank if unknown)</b> AFEYCB2CI3JTL CZGAAA
<b>Well Name:</b> KP		<b>Well Number:</b> 523-8
<b>Well Type:</b> Development Well	<b>Well Country:</b> United States of America	
<b>H2S Present:</b> No	<b>Well State:</b> Colorado	<b>Well County:</b> Garfield

*KEY PERFORMANCE INDICATORS*

General	
<b>Survey Conducted Date</b> The date the survey was conducted	4/15/2012

Cementing KPI Survey	
<b>Type of Job</b> Select the type of job. (Cementing or Non-Cementing)	0
<b>Select the Maximum Deviation range for this Job</b> What is the highest deviation for the job you just completed? This may not be the maximum well deviation.	Deviated
<b>Total Operating Time (hours)</b> Total Operating Hours Including Rig-up, Pumping, Rig-down. Enter in decimal format.	2
<b>HSE Incident, Accident, Injury</b> HSE Incident, Accident, Injury. This should be recordable incidents only.	No
<b>Was the job purpose achieved?</b> Was the job delivered correctly as per customer agreed design?	Yes
<b>Operating Hours (Pumping Hours)</b> Total number of hours pumping fluid on this job. Enter in decimal format.	1
<b>Customer Non-Productive Rig Time (hrs)</b> Lost time due to Halliburton in the start, execution, or completion of an ordered service or product, or delays in a follow-on service. Enter in decimal format. 0 if none.	0
<b>Type of Rig Classification Job Was Performed</b> Type Of Rig (classification) Job Was Performed On	Drilling Rig (Portable)
<b>Number Of JSAs Performed</b> Number Of Jsas Performed	6
<b>Number of Unplanned Shutdowns</b> Unplanned shutdown is when injection stops for any period of time.	0
<b>Was this a Primary Cement Job (Yes / No)</b>	Yes

<b>Sales Order #:</b> 9396716	<b>Line Item:</b> 10	<b>Survey Conducted Date:</b> 4/15/2012
<b>Customer:</b> WPX ENERGY ROCKY MOUNTAIN LLC-EBUS		<b>Job Type (BOM):</b> CMT SURFACE CASING BOM
<b>Customer Representative:</b> MATT HUTSON		<b>API / UWI: (leave blank if unknown)</b> AFEYCB2CI3JTL CZGAAA
<b>Well Name:</b> KP		<b>Well Number:</b> 523-8
<b>Well Type:</b> Development Well	<b>Well Country:</b> United States of America	
<b>H2S Present:</b> No	<b>Well State:</b> Colorado	<b>Well County:</b> Garfield

Primary Cement Job= Casing job, Liner job, or Tie-back job.	
<b>Did We Run Wiper Plugs?</b> Did We Run Top And Bottom Casing Wiper Plugs?	Top
<b>Mixing Density of Job Stayed in Designed Density Range (0-100%)</b> Density Range defined as +/- .20 ppg. Calculation: Total BBLs cement mixed at designed density divided by total BBLs of cement multiplied by 100	90
<b>Was Automated Density Control Used?</b> Was Automated Density Control (ADC) Used ?	Yes
<b>Pump Rate (percent) of Job Stayed At Designed Pump Rate</b> Pump Rate range defined as +/- 1bbl/min. Calculation: Total BBLs of fluid pumped at the designed rate divided by Total BBLs of fluid pumped, multiplied by 100	98
<b>Nbr of Remedial Sqz Jobs Rqd - Competition</b> Number Of Remedial Squeeze Jobs Required After Primary Job Performed By Competition	0
<b>Nbr of Remedial Plug Jobs Rqd - HES</b> Number Of Remedial Plug Jobs Needed After Primary Plug Pumped By HES	0
<b>Nbr of Remedial Sqz Jobs Rqd - HES</b> Number Of Remedial Squeeze Jobs Required After Primary Job Performed By HES	0