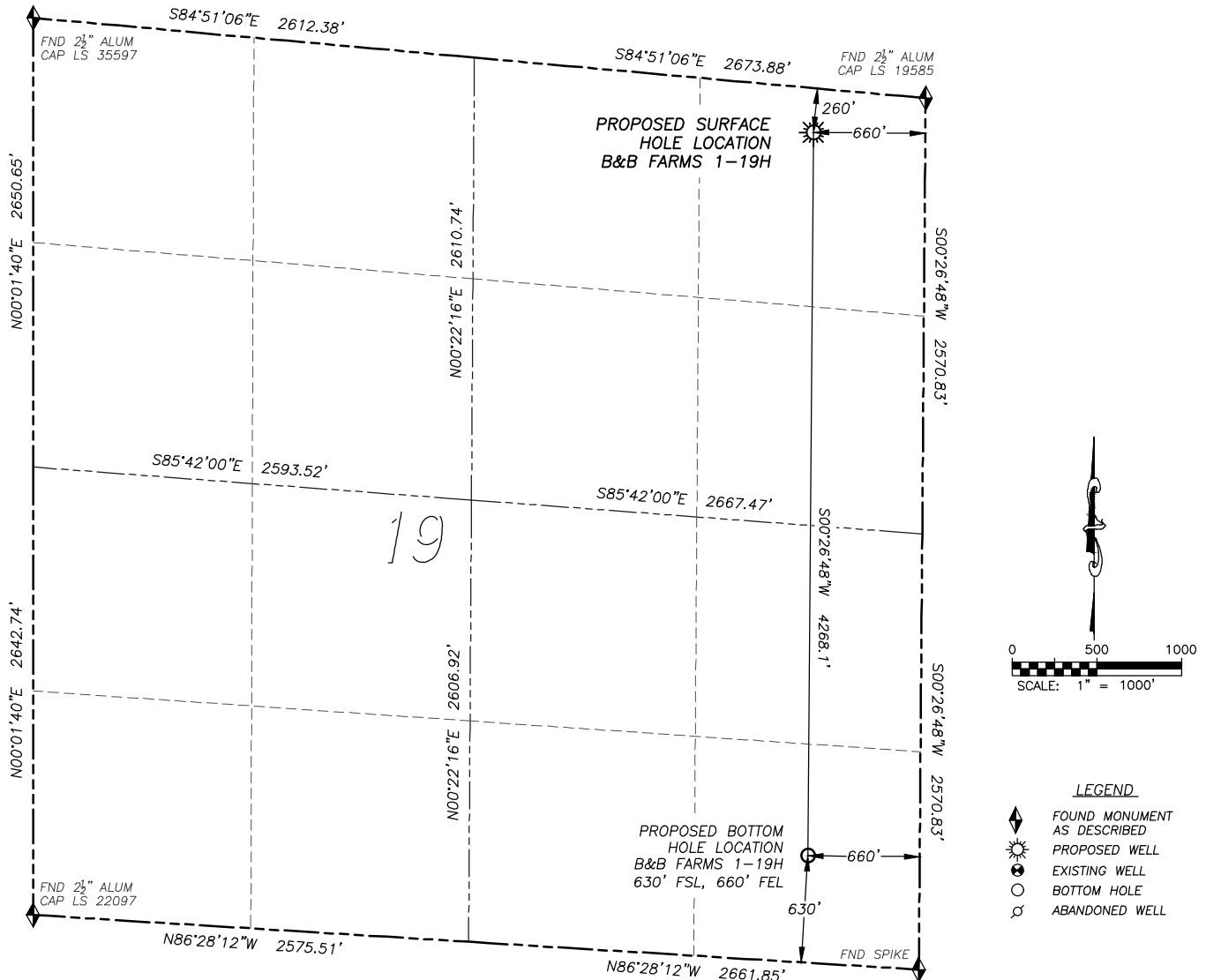


WELL LOCATION CERTIFICATE

B&B FARMS 1-19H

SECTION 19, TOWNSHIP 11 SOUTH, RANGE 44 WEST OF THE 6TH PRINCIPAL MERIDIAN



0 500 1000
SCALE: 1" = 1000'

LEGEND

- ◆ FOUND MONUMENT AS DESCRIBED
- ☼ PROPOSED WELL
- ⊙ EXISTING WELL
- BOTTOM HOLE
- ⊗ ABANDONED WELL

NAD 83 LATITUDE AND LONGITUDE**B&B FARMS 1-19H SURFACE HOLE:**

LATITUDE: N39.08696°
 LONGITUDE: W102.37495°
 ELEVATION: 4268'
 FOOTAGE: 260' FNL, 660' FEL
 PDOP: 1.5
 QTR/QTR: NE4/NE4
 PROP LINE: 260' NORTH
 GPS OPERATOR: K. DALEY

BOTTOM HOLE:

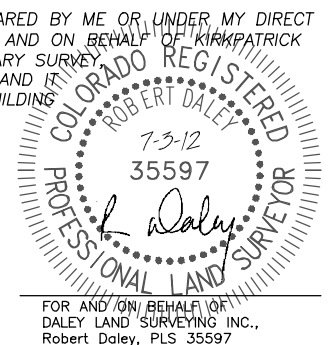
LATITUDE: N39.07525°
 LONGITUDE: W102.37506°
 FOOTAGE: 630' FSL, 660' FEL

IN ACCORDANCE WITH A REQUEST FROM KIRKPATRICK OIL COMPANY, DALEY LAND SURVEYING, INC. HAS DETERMINED THE SURFACE LOCATION OF THE **B&B FARMS 1-19H** WELL TO BE 260' FNL, 660' FEL, AS MEASURED AT NINETY (90) DEGREES FROM THE SECTION LINES OF SECTION 19, TOWNSHIP 11 SOUTH, RANGE 44 WEST OF THE 6TH PRINCIPAL MERIDIAN, KIT CARSON COUNTY, COLORADO. THE BOTTOM HOLE LOCATION, PROVIDED BY THE CLIENT, IS TO BE 630' FSL, 660' FEL.

I HEREBY CERTIFY THAT THIS WELL LOCATION CERTIFICATE WAS PREPARED BY ME OR UNDER MY DIRECT SUPERVISION, THAT THE WORK WAS COMPLETED ON 6/27/2012 FOR AND ON BEHALF OF KIRKPATRICK OIL COMPANY, AND THAT THIS MAP DOES NOT REPRESENT A BOUNDARY SURVEY. IT IS NOT A LAND SURVEY PLAT OR AN IMPROVEMENT SURVEY PLAT AND IT IS NOT TO BE RELIED UPON FOR THE ESTABLISHMENT OF FENCE, BUILDING OR OTHER FUTURE IMPROVEMENT LINES.

NOTES:

- 1) BEARINGS FOR THIS MAP ARE ASSUMED AND BASED UPON GPS OBSERVATIONS MADE BETWEEN MONUMENTS LOCATED AT THE NORTHEAST CORNER AND NORTHWEST CORNER OF SECTION 19, T.11S., R.44W.
- 2) HORIZONTAL DATUM IS NAD83.
- 3) VERTICAL DATUM IS NAVD88 AND ORIGINATES FROM THE LOCAL C.O.R.S. NETWORK, UTILIZING THE GEOID09 MODEL.
- 4) SEE LOCATION DRAWING FOR VISIBLE IMPROVEMENTS WITHIN 400' OF PROPOSED DISTURBED AREA.
- 5) SURFACE USE: AGRICULTURE.



FOR AND ON BEHALF OF
 DALEY LAND SURVEYING, INC.,
 Robert Daley, PLS 35597