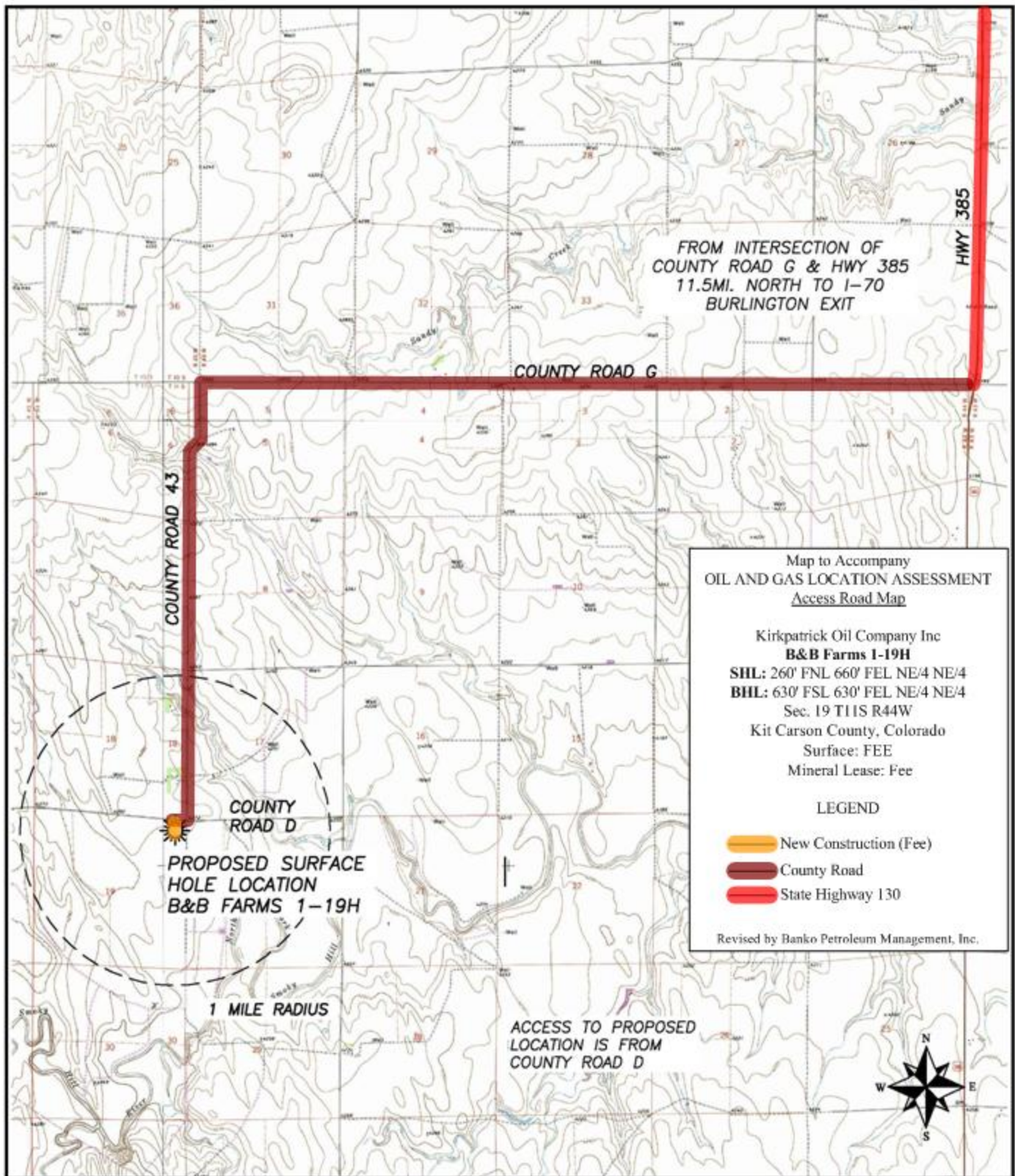


ACCESS ROAD MAP B&B FARMS 1-19H

SECTION 19, TOWNSHIP 11 SOUTH, RANGE 44 WEST OF THE 6TH PRINCIPAL MERIDIAN



303 953 9841

SECTION 19, TOWNSHIP 11 SOUTH, RANGE 44 WEST OF THE 6TH PRINCIPAL MERIDIAN

